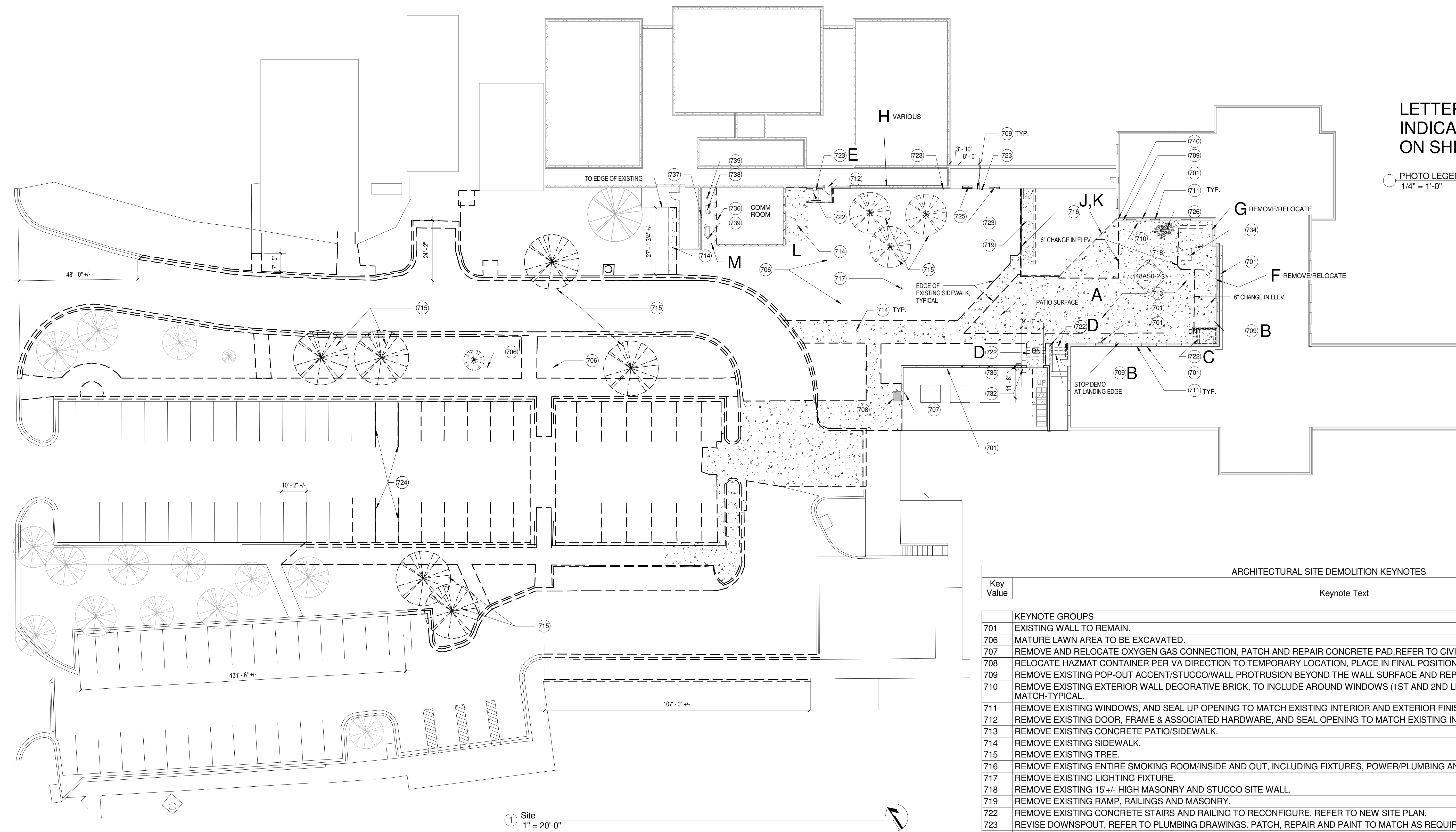


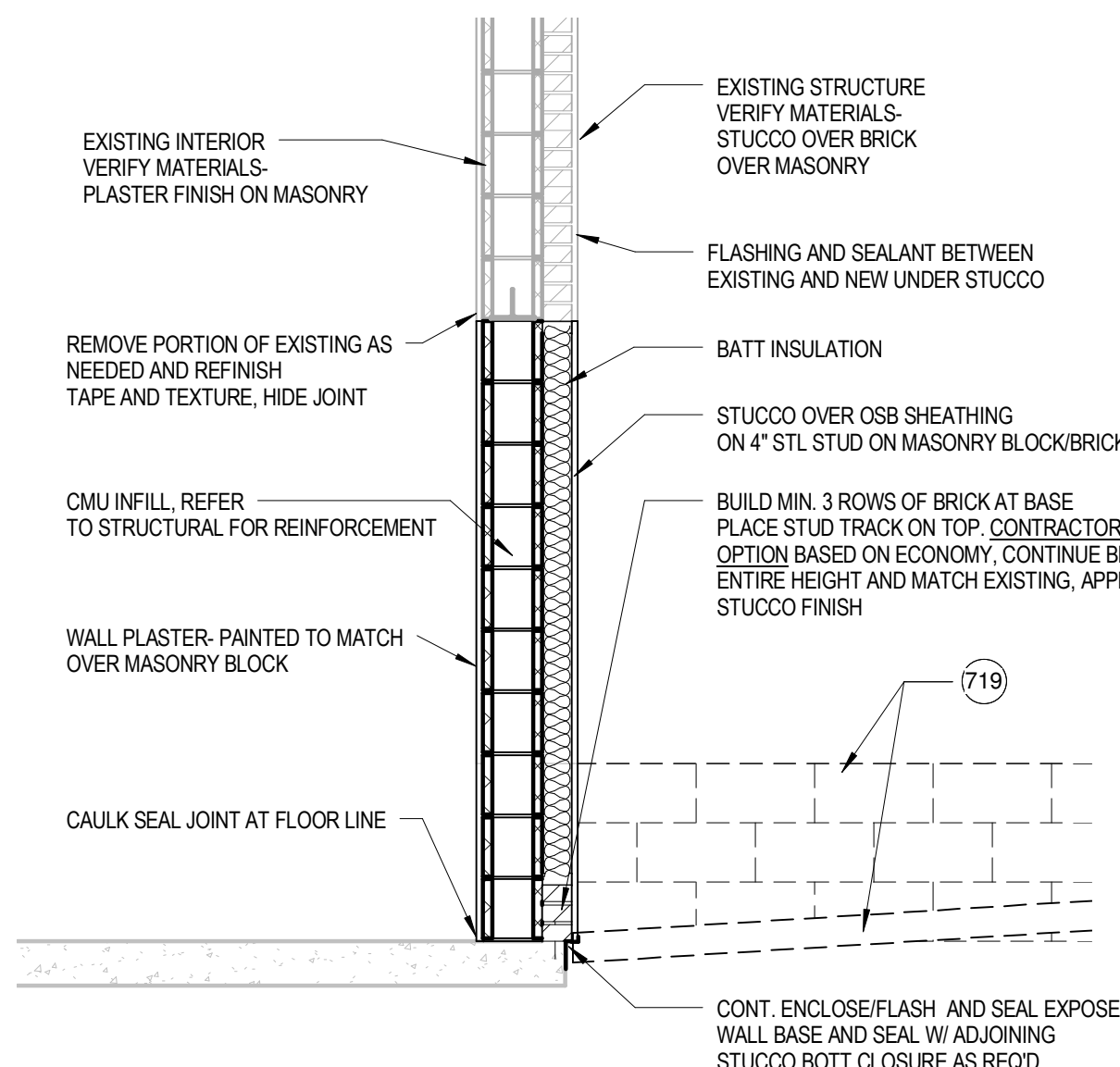
three eighths inch = one foot  
one and one half inch = one foot  
one inch = one foot  
three quarters inch = one foot  
one half inch = one foot  
one quarter inch = one foot  
one eighth inch = one foot  
one sixteenth inch = one foot



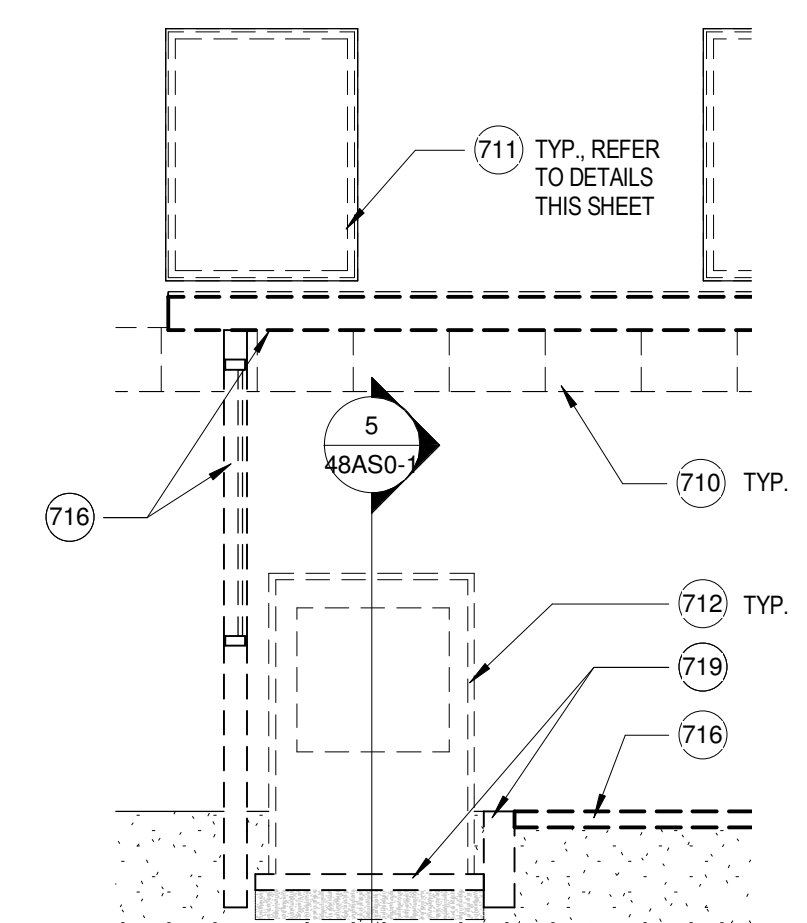
LETTERS "A" THROUGH "L"  
INDICATE PHOTOS OF AREA  
ON SHEET AS0.3

PHOTO LEGEND  
1/4" = 1'-0"

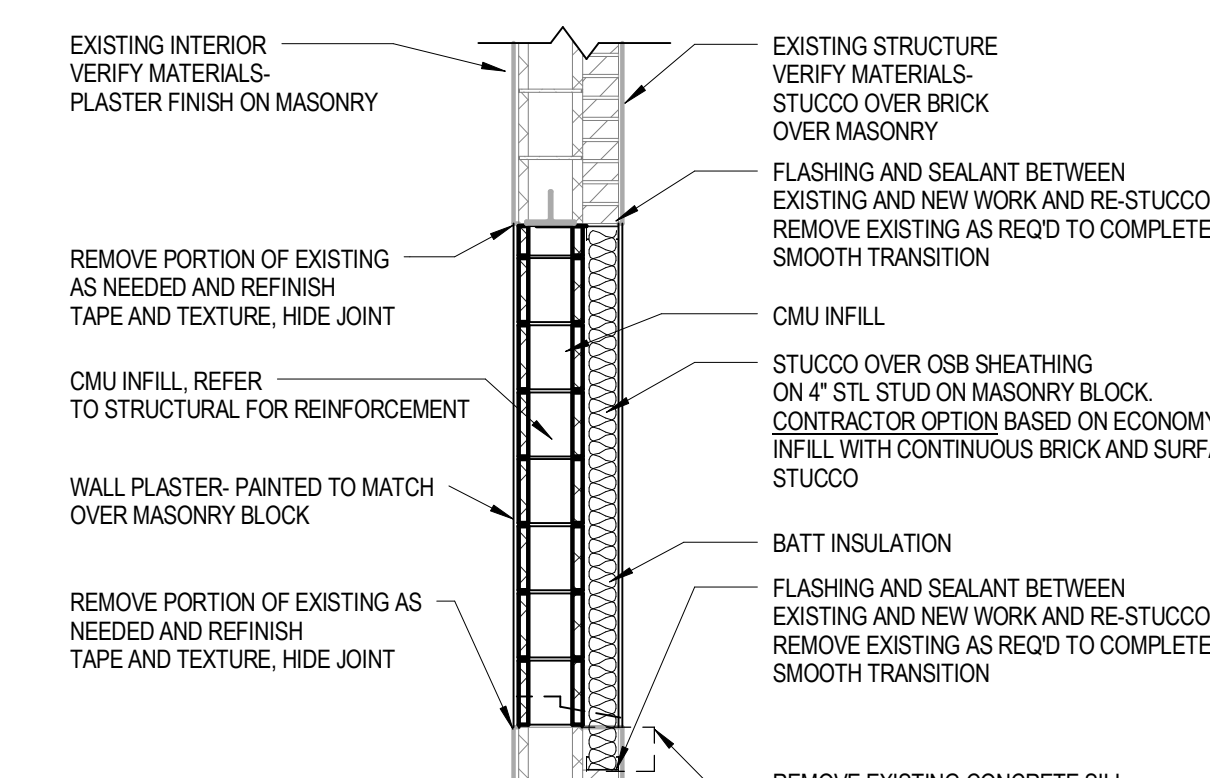
ARCHITECTURAL SITE DEMOLITION KEYNOTES	
Key Value	Keynote Text
KEYNOTE GROUPS	
701	EXISTING WALL TO REMAIN.
706	MATURE LAWN AREA TO BE EXCAVATED.
707	REMOVE AND RELOCATE OXYGEN GAS CONNECTION, PATCH AND REPAIR CONCRETE PAD, REFER TO CIVIL DRAWINGS FOR RELOCATION.
708	RELOCATE HAZMAT CONTAINER PER VA DIRECTION TO TEMPORARY LOCATION, PLACE IN FINAL POSITION AT PROJECT COMPLETION.
709	REMOVE EXISTING POP-OUT ACCENT/STUCCO/WALL PROTRUSION BEYOND THE WALL SURFACE AND REPAIR TO MATCH.
710	REMOVE EXISTING EXTERIOR WALL DECORATIVE BRICK, TO INCLUDE AROUND WINDOWS (1ST AND 2ND LEVELS) AND DOORS AND REPAIR TO MATCH-TYPICAL.
711	REMOVE EXISTING WINDOWS, AND SEAL UP OPENING TO MATCH EXISTING INTERIOR AND EXTERIOR FINISHES-ALL 1ST AND 2ND FLOOR.
712	REMOVE EXISTING DOOR, FRAME & ASSOCIATED HARDWARE, AND SEAL OPENING TO MATCH EXISTING INTERIOR AND EXTERIOR FINISHES.
713	REMOVE EXISTING CONCRETE PATIO/SIDEWALK.
714	REMOVE EXISTING SIDEWALK.
715	REMOVE EXISTING TREE.
716	REMOVE EXISTING ENTIRE SMOKING ROOM/INSIDE AND OUT, INCLUDING FIXTURES, POWER/PLUMBING AND CANOPY STRUCTURE COMPLETELY.
717	REMOVE EXISTING LIGHTING FIXTURE.
718	REMOVE EXISTING 15'-0" HIGH MASONRY AND STUCCO SITE WALL.
719	REMOVE EXISTING RAMP, RAILINGS AND MASONRY.
722	REMOVE EXISTING CONCRETE STAIRS AND RAILING TO RECONFIGURE, REFER TO NEW SITE PLAN.
723	REVISE DOWNSPOUT, REFER TO PLUMBING DRAWINGS. PATCH, REPAIR AND PAINT TO MATCH AS REQUIRED.
724	REVISED FOR ADA PARKING, REFER TO DRAWING 48AS1-0.
725	REMOVE WINDOW AND CUT ROUGH OPENING IN WALL FOR NEW CASED OPENING, REFER TO FLOOR PLAN 48AS2-1 FOR EXACT LOCATION, DIMENSIONS ON 48AS2-2.
726	REMOVE EXISTING PLANT/SHRUB.
732	REMOVE EXISTING STONE CLAD SITE WALL AS REQUIRED, COORDINATE WITH NEW FLOOR PLAN 48AS2-1. FINISH OPENING WILL BE 9'-0" CLEAR.
733	REMOVE PORTION OF EXISTING RAILING AS REQUIRED, FINISH CLEARANCE WILL BE 11'-8" +/- PER 48AS2-1.
734	REMOVE/RELOCATE UG VAULT, REFER TO CIVIL DRAWINGS FOR FULL DIRECTION.
735	REMOVE/RELOCATE OXYGEN GAS SENSOR, PATCH AND REPAIR WALL AS REQUIRED, REFER TO CIVIL DRAWINGS FOR RELOCATION.
736	DEMO WALL IN PREPARATION TO EXTEND SPACE OVER TO STAIR WELL WALL
737	PARTIALLY REMOVE GUTTER BELOW COMM. ROOM ROOF TO RECONNECT TO DRAIN ONTO NEW EXTENDED ROOF
738	REMOVE AND RELOCATE EQUIPMENT AND PAD PER EACH DISCIPLINE'S RELOCATION DRAWINGS
739	REMOVE DRAIN 8" BELOW GRADE, PACK PIPE WITH CONCRETE AND COVER WITH NEW SLAB ADDITION-REFER TO ARCHITECTURAL NEW FLOOR PLAN DRAWING
740	CUT AND CAP HOSE BIBB, REFER TO PLUMBING DRAWINGS.



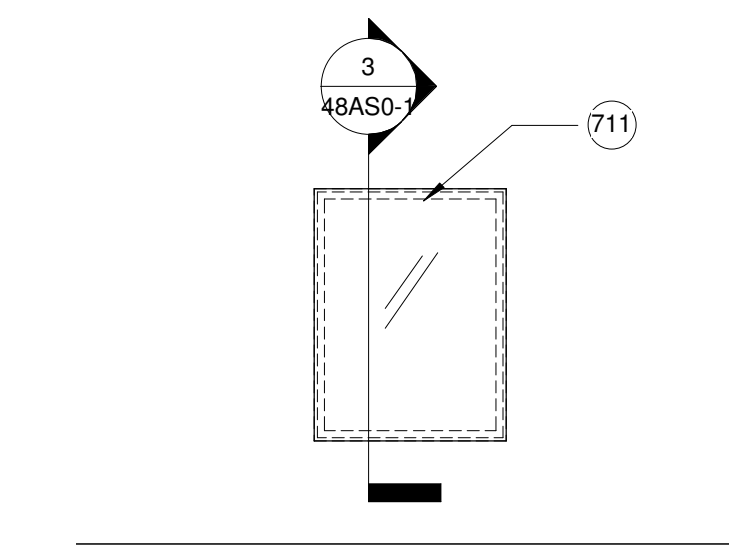
5 DOOR INFILL DETAIL  
1/2" = 1'-0"



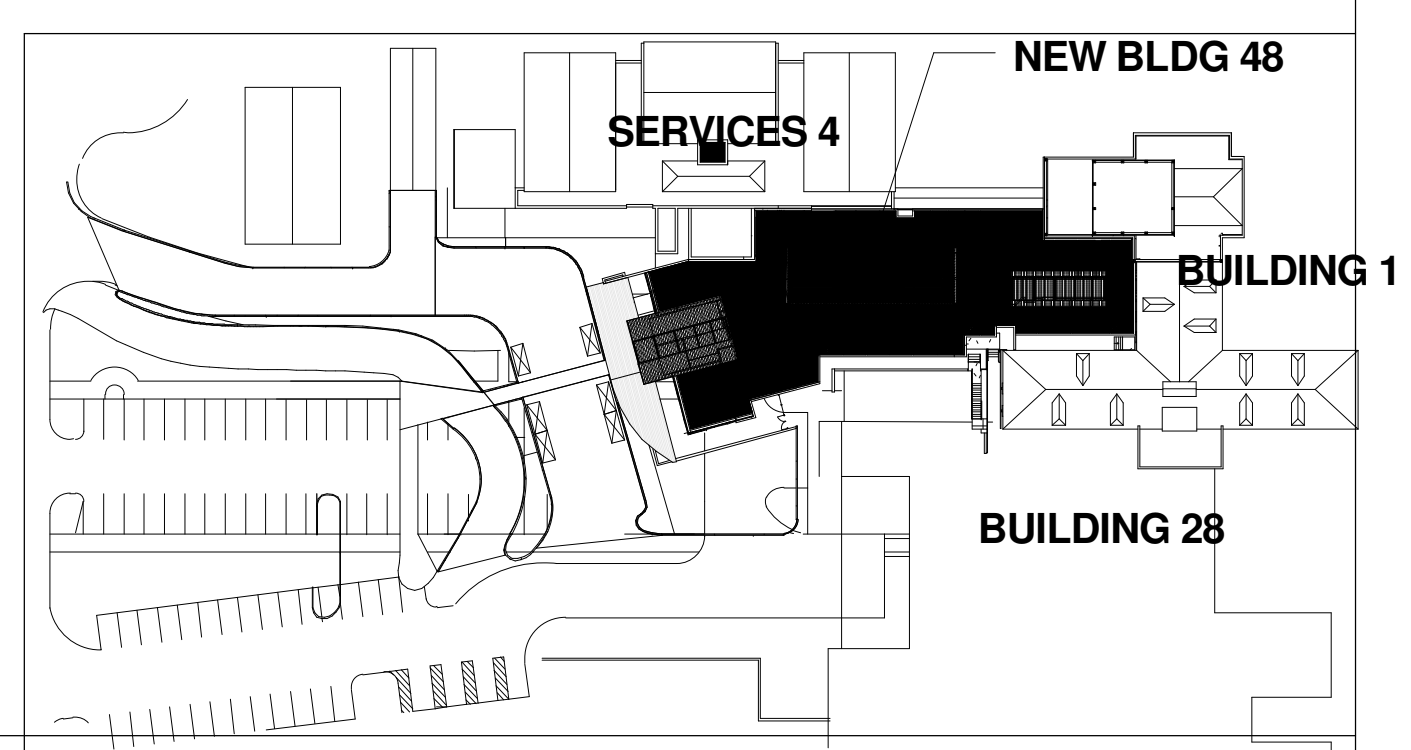
4 DOOR REMOVAL DETAIL  
1/4" = 1'-0"



3 WINDOW INFILL DETAIL  
1/2" = 1'-0"



2 TYP. WINDOW REMOVAL  
1/4" = 1'-0"



ARCHITECTURAL DEMOLITION PLAN

Department of Veterans Affairs

14355  
ROBERT Q. LARA  
Professional Engineer  
Exp. date: 6-15-12

ARCHITECT OF RECORD:

SBBL Architecture + Planning  
1001 North Maroon Way # 105, Tusson, Arizona 85711  
T: 520.620.0255 F: 520.620.0255 E: sbbl@sbbl.biz

EMERGENCY  
DEPARTMENT

AMARILLO VA HEALTH CARE SYSTEM  
AMARILLO, TEXAS

Approved: VA Area Proj. Mgr.

V.A. PROJECT NO.:VA258-P-0196  
SBBL PROJECT NO.:0110.00.0  
DRAWN BY: Author  
CHECKED BY: Checker  
DATE: 05/05/11

Date	Revision

Approved: Med. Ctr. Director

Approved: Asst. Admin Engineering Service

Approved: Asst. VA Medical Director

Approved: Chief of Facilities

Approved: Chief of Engineering

Approved: Chief of Projects

48AS0-1