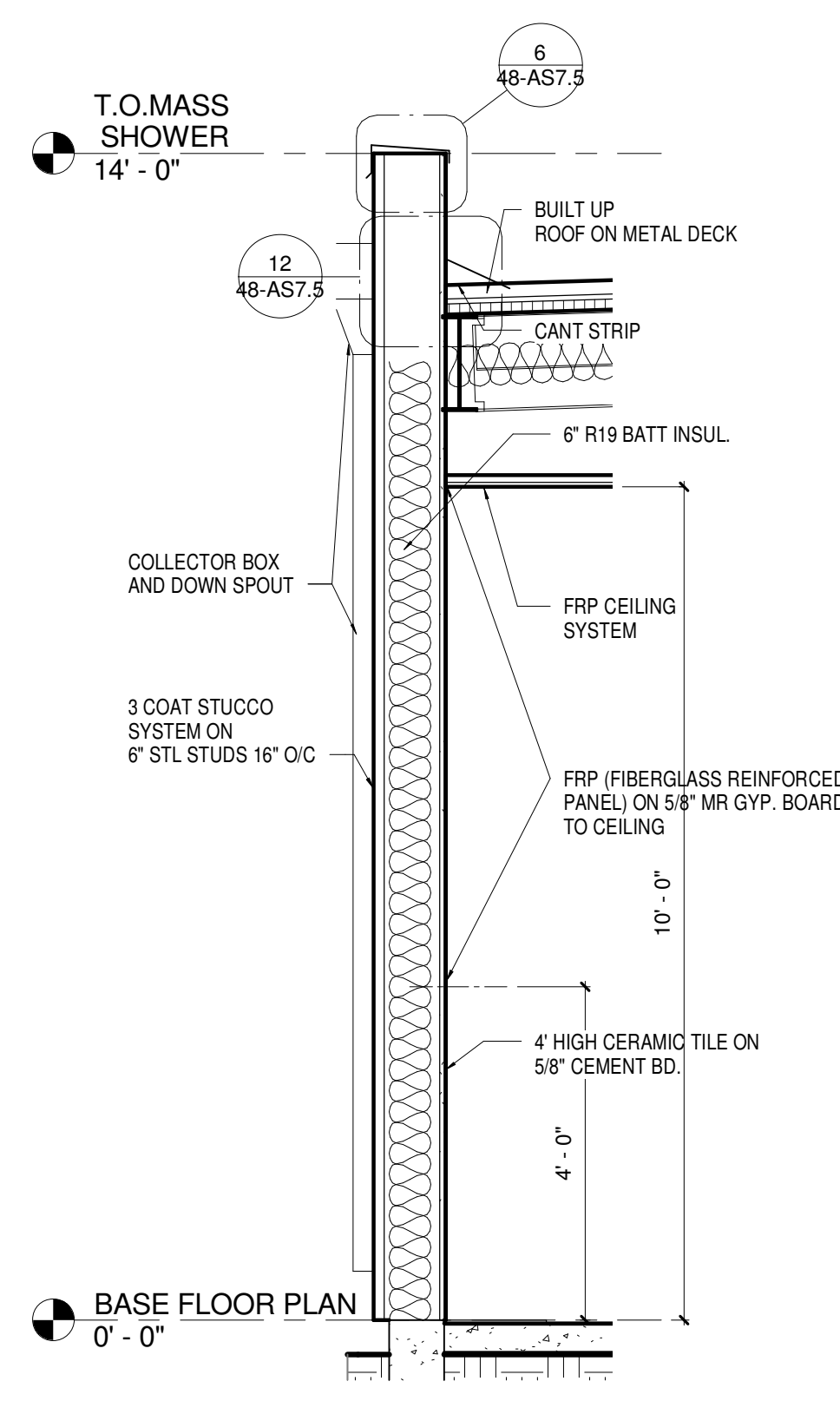
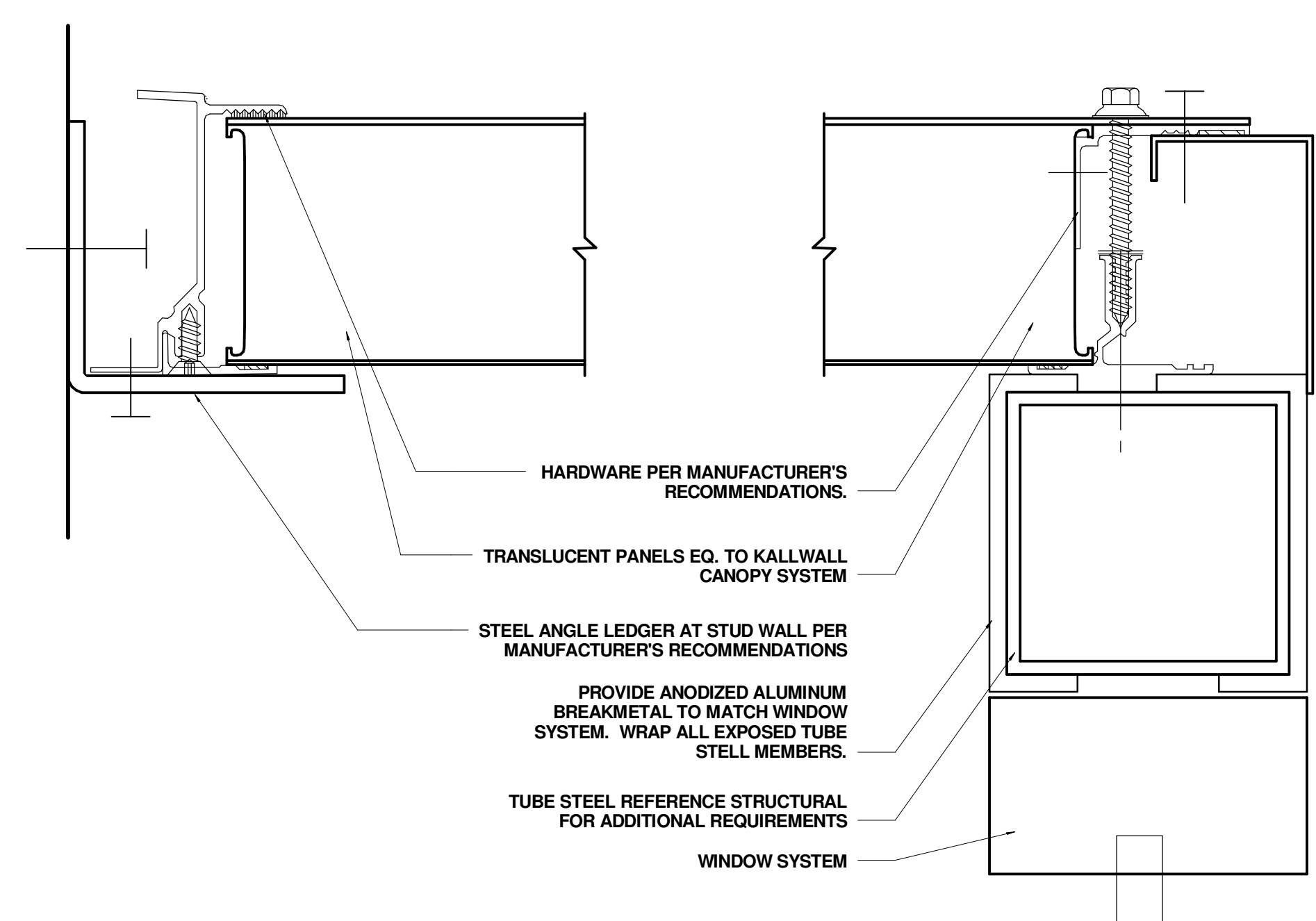


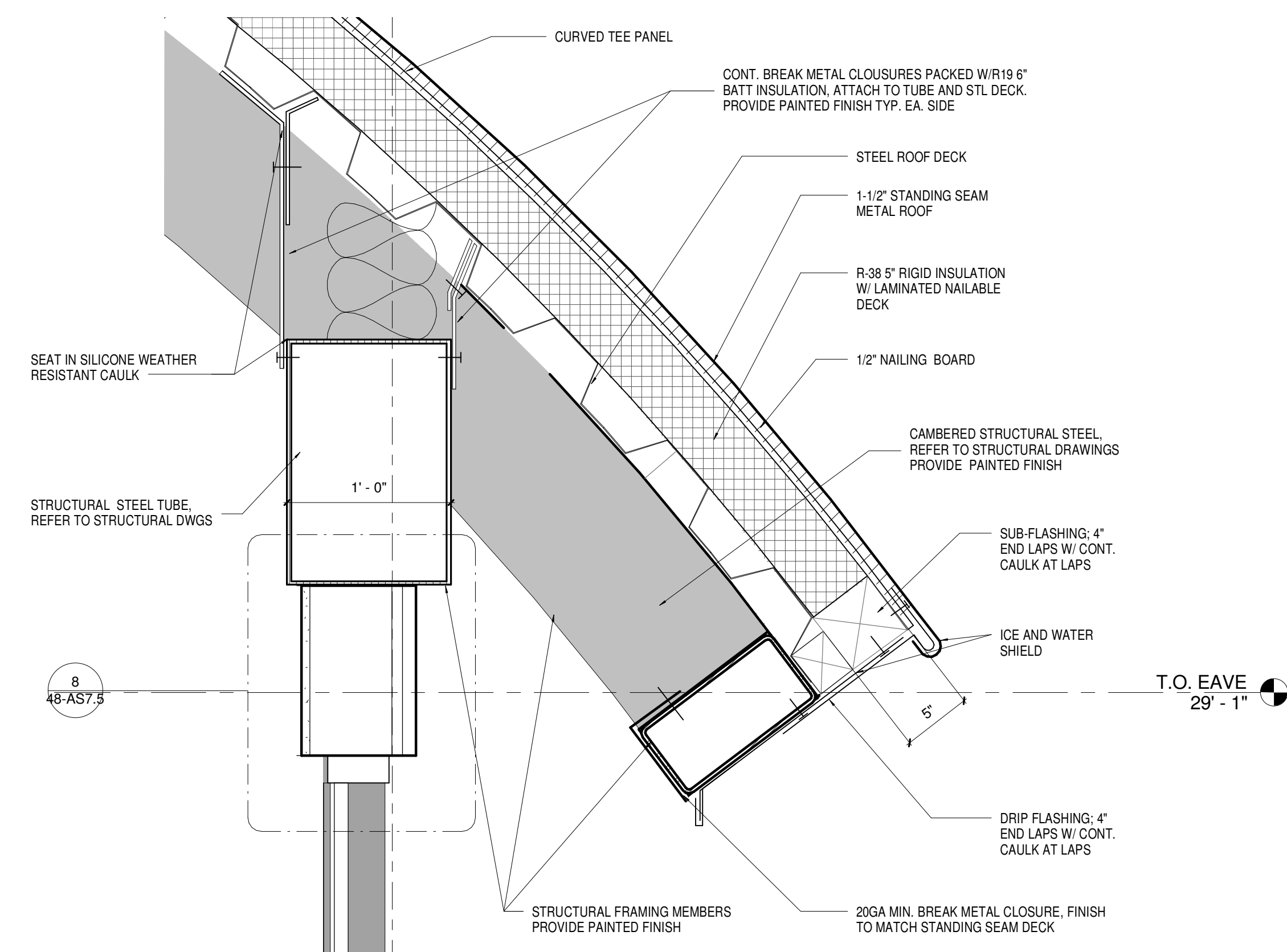
three eighths inch = one foot
one and one half inch = one foot
one inch = one foot
three quarters inch = one foot
one half inch = one foot
one quarter inch = one foot
one eighth inch = one foot
one sixteenth inch = one foot



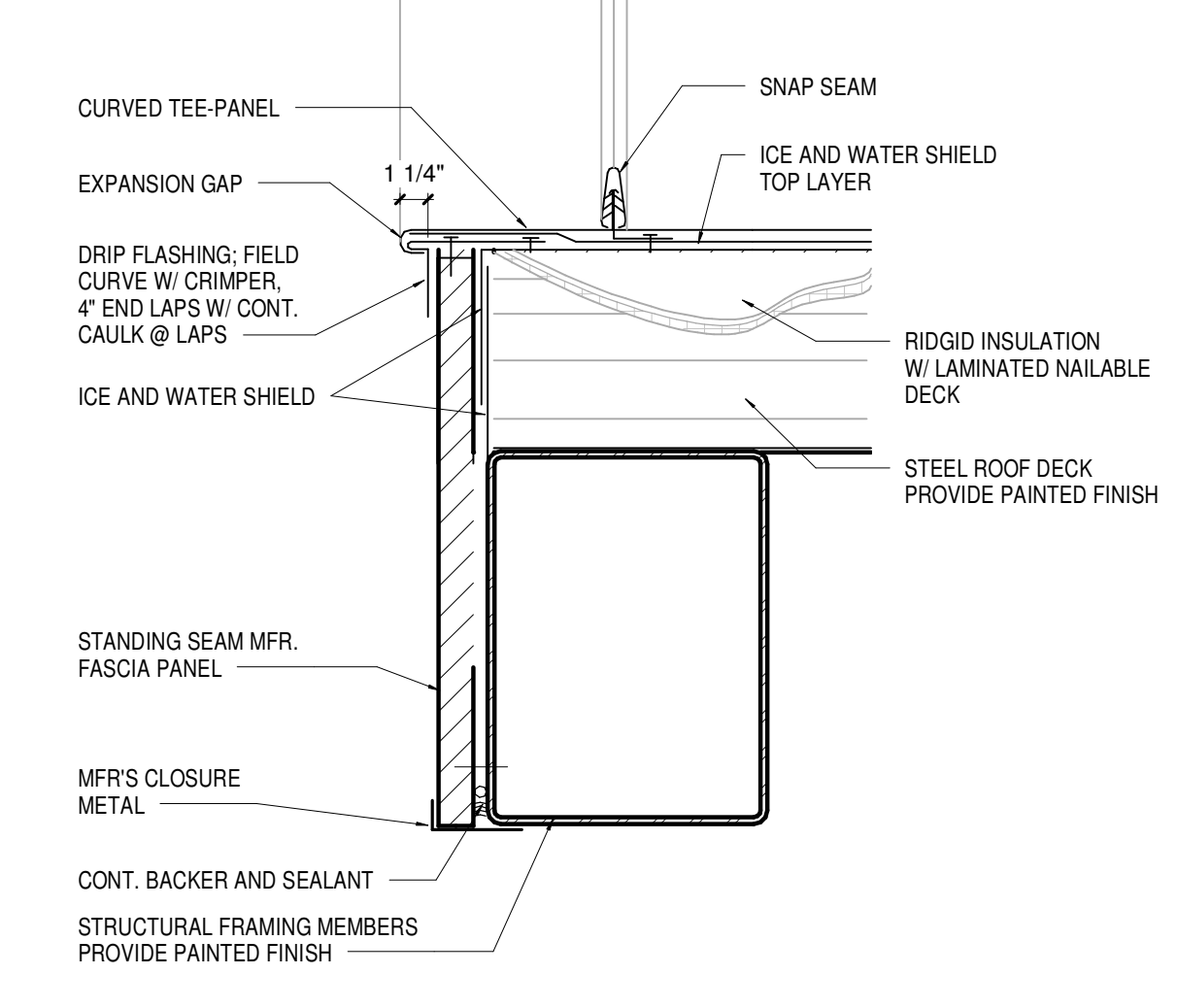
④ MASS SHOWER WALL SECTION 1
1/2" = 1'-0"



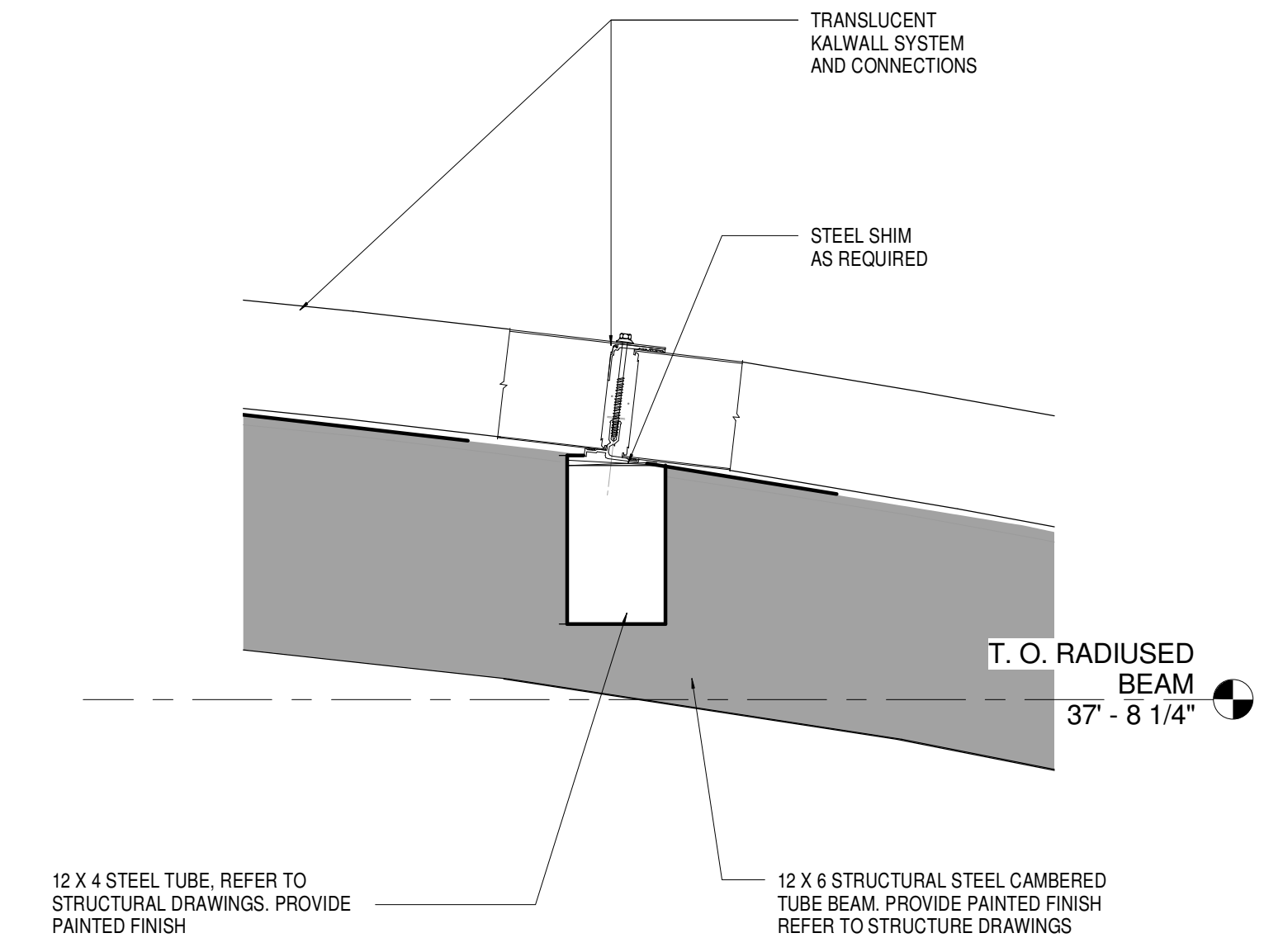
③ Interior Canopy Detail
1/4" = 1'-0"



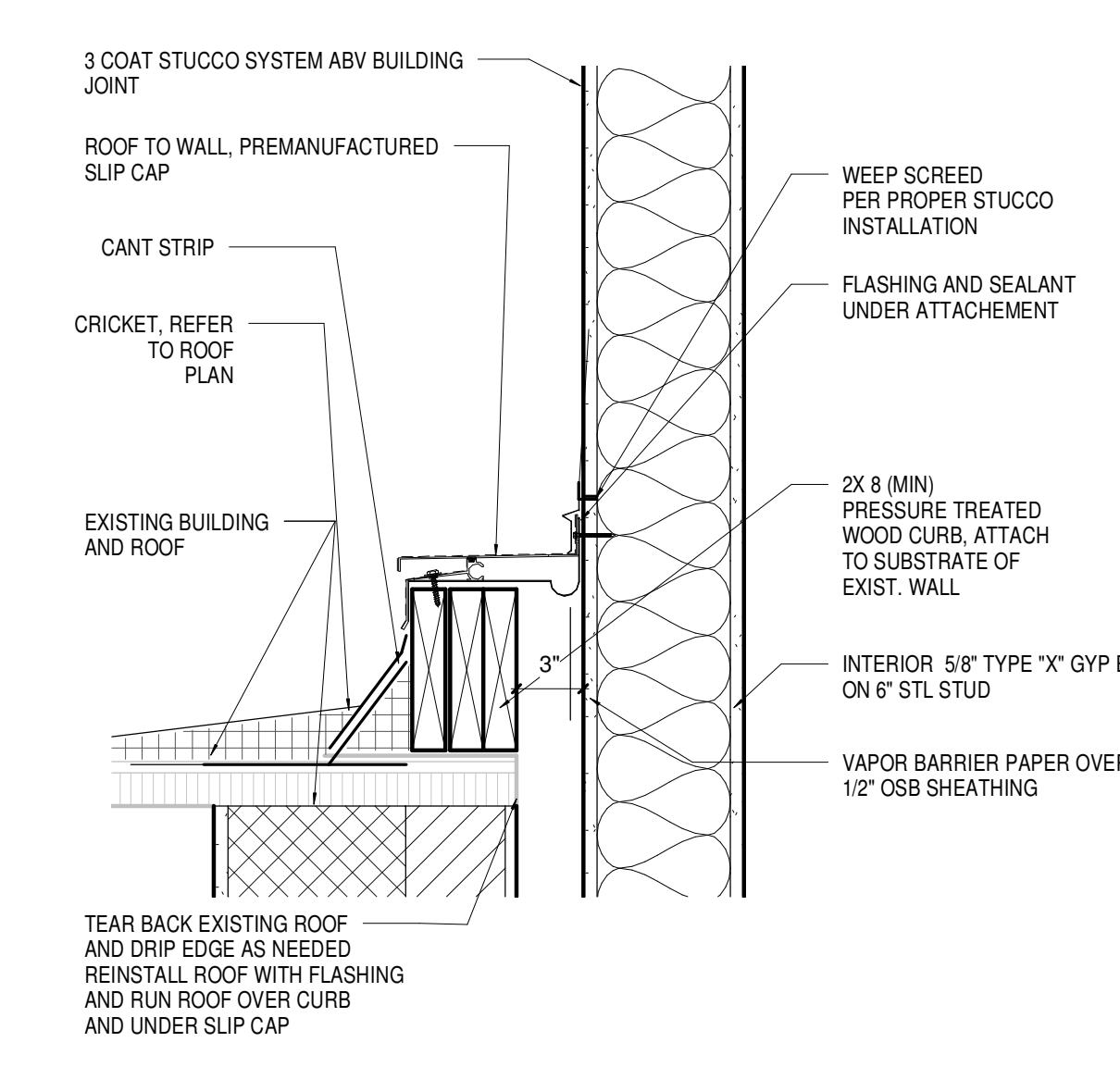
⑦ BARREL ROOF SIDE EAVE 1
1 1/2" = 1'-0"



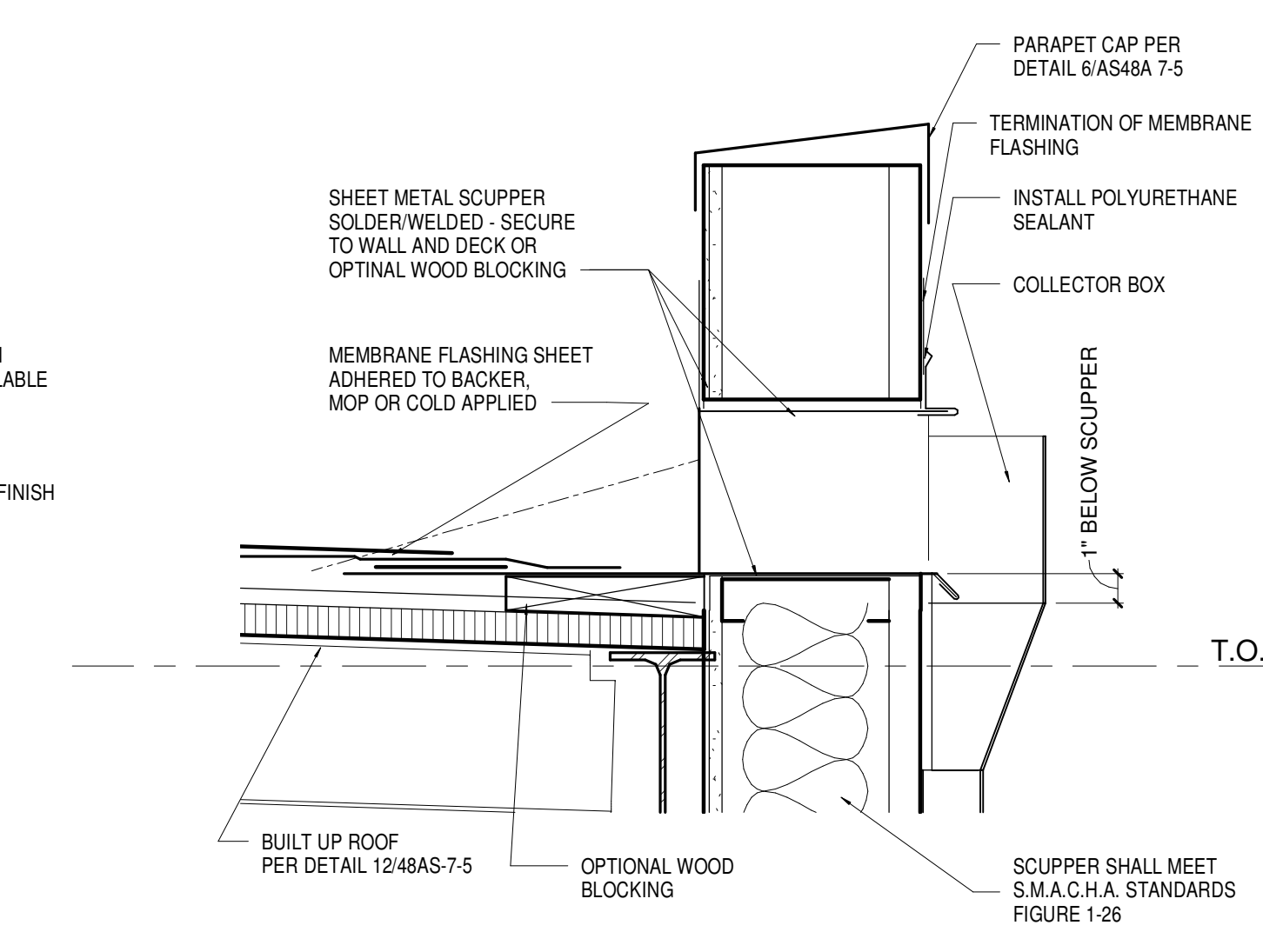
⑥ BARREL ROOF FRONT EAVE
1 1/2" = 1'-0"



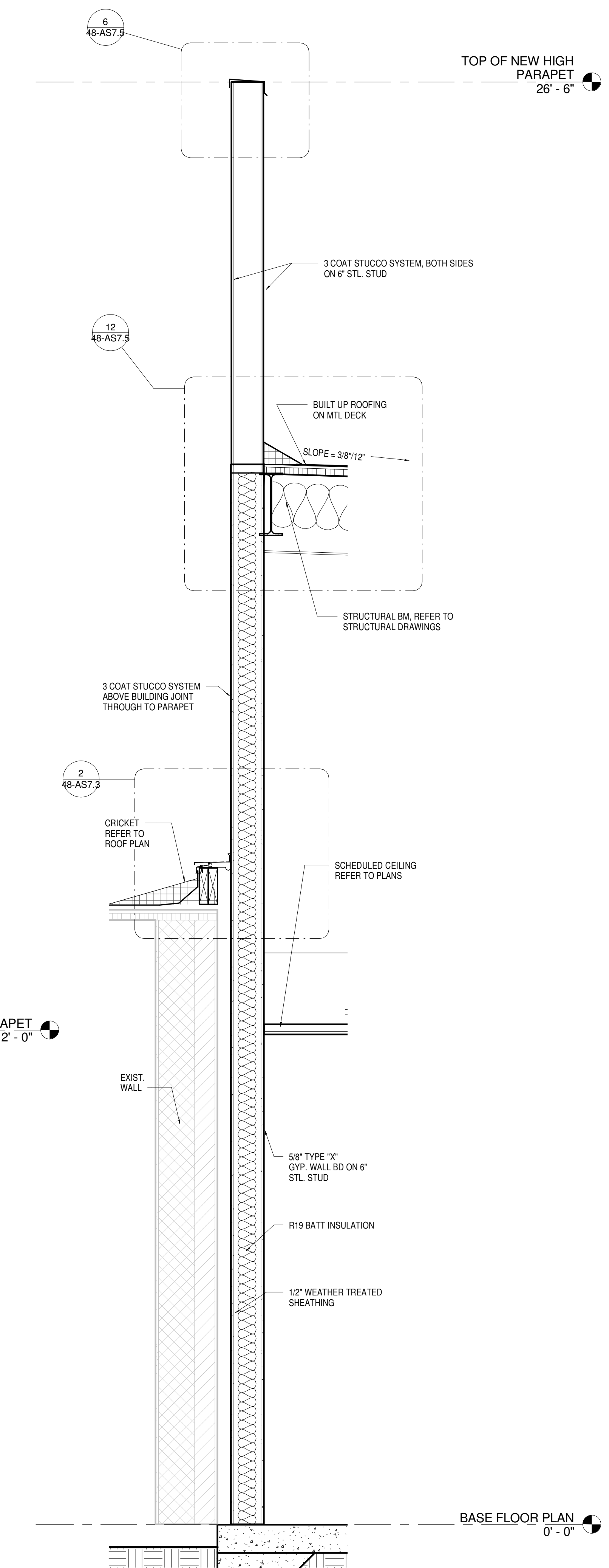
⑨ CANOPY SECTION 6
3" = 1'-0"



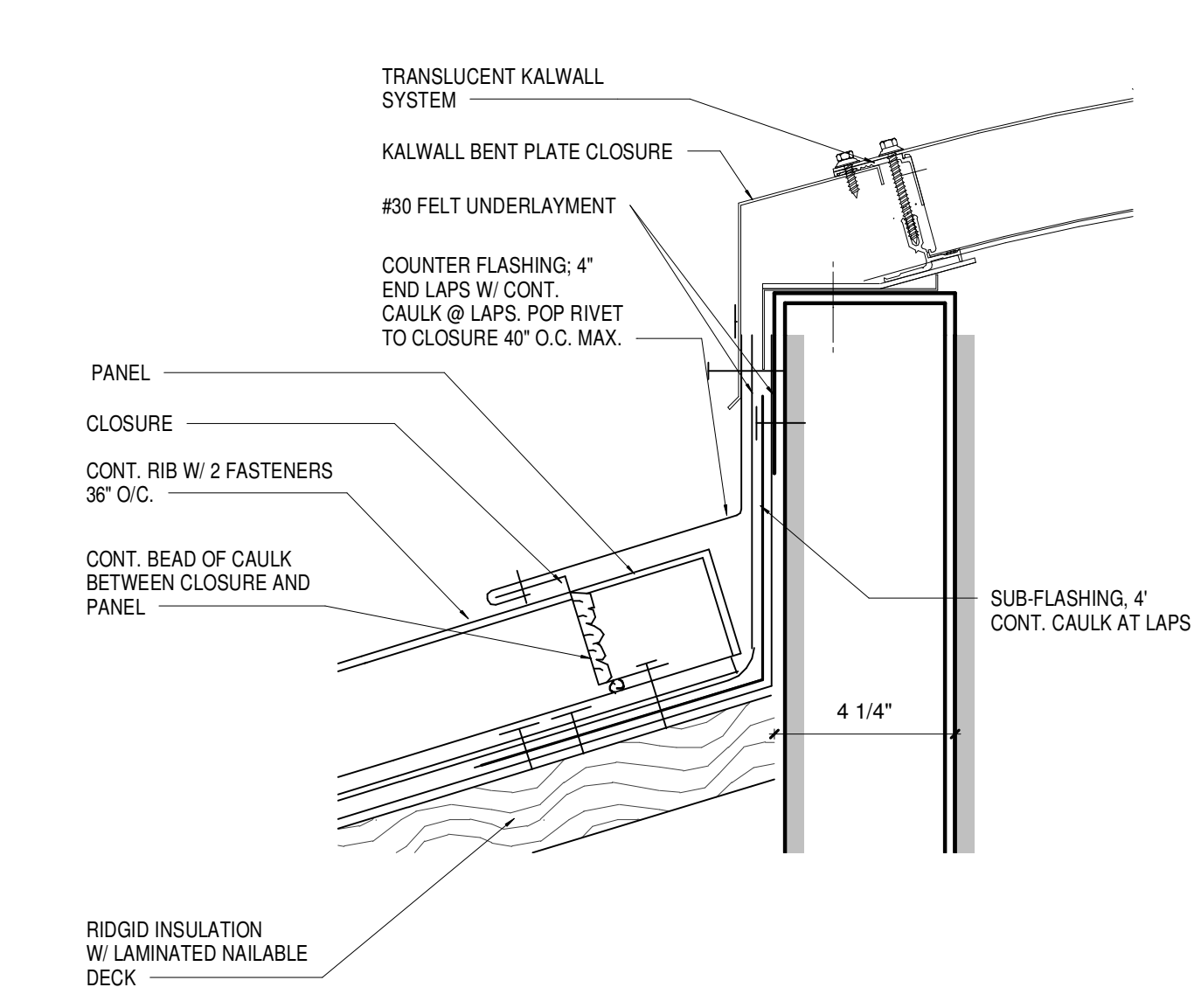
② EXTERIOR WALL DETAIL 20
1 1/2" = 1'-0"



⑤ SCUPPER-CONDUCTOR BOX DETAIL
1 1/2" = 1'-0"

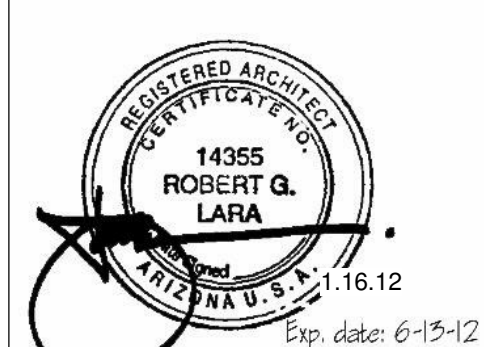


① WALL SECTION 11
3/4" = 1'-0"



⑧ BARREL ROOF AT SKYLIGHT DETAIL 24
3" = 1'-0"

WALL SECTIONS AND DETAILS



ARCHITECT OF RECORD:

SBBL Architecture + Planning
1001 North Marana Way # 105, Tucson, Arizona 85717
T: 520.620.0255 F: 520.620.0255 E: info@sbbl.net



EMERGENCY DEPARTMENT
AMARILLO VA HEALTH CARE SYSTEM
AMARILLO, TEXAS

Approved: VA Area Proj. Mgr.

V.A. PROJECT NO.:VA258-P-0196
SBBL PROJECT NO:0110.00
DRAWN BY: RBT
CHECKED BY: RGL
DATE: 1/16/12

△	Date	Revision

Approved: Med. Ctr. Director

Approved: Asst. Admin Engineering Service

Approved: Asst. VA Medical Director

Approved: Chief of Facilities

Approved: Chief of Engineering

Approved: Chief of Projects