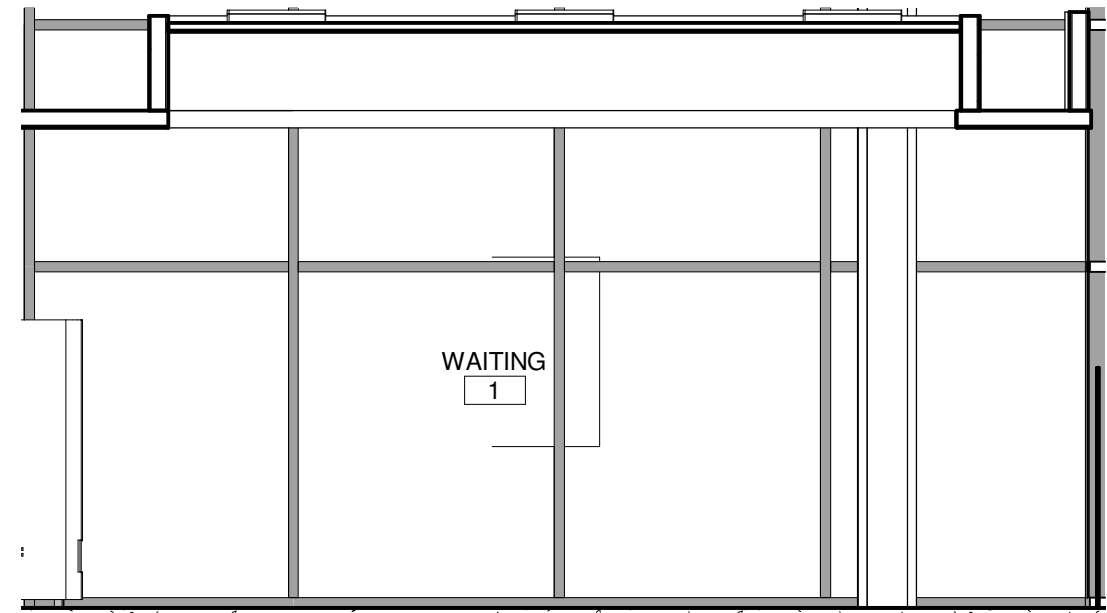
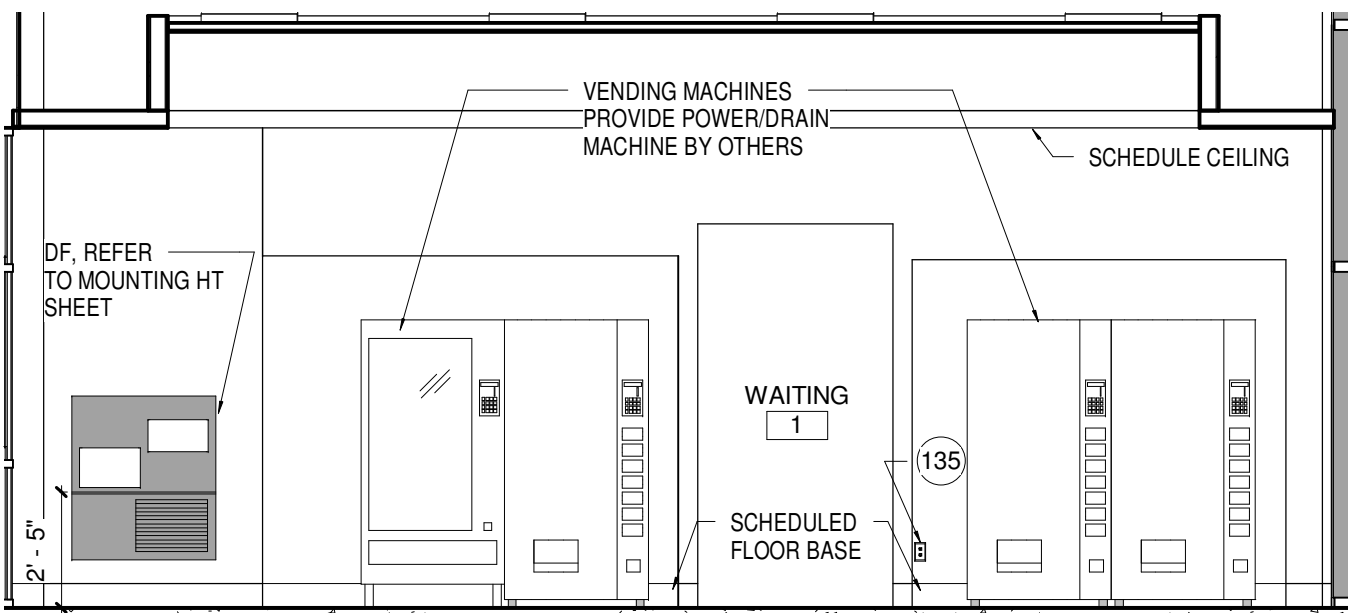


three eighths inch = one foot
one and one half inch = one foot
one inch = one foot
three quarters inch = one foot
one half inch = one foot
one quarter inch = one foot
one eighth inch = one foot

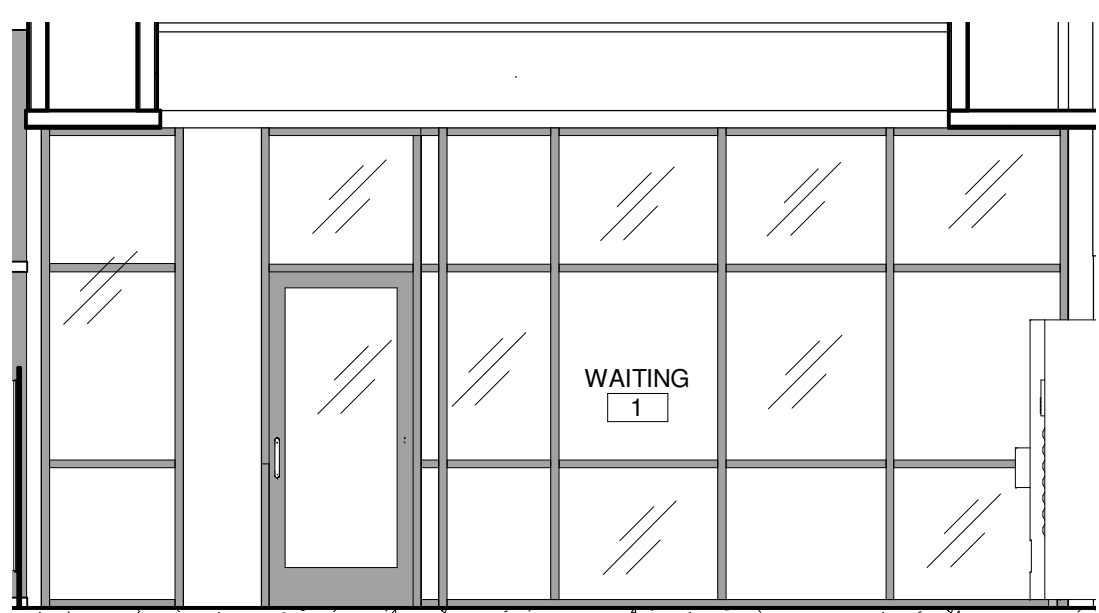


4 WAITING ROOM - WEST
1/4" = 1'-0"

2 WINDOW SYSTEM
STORE FRONT

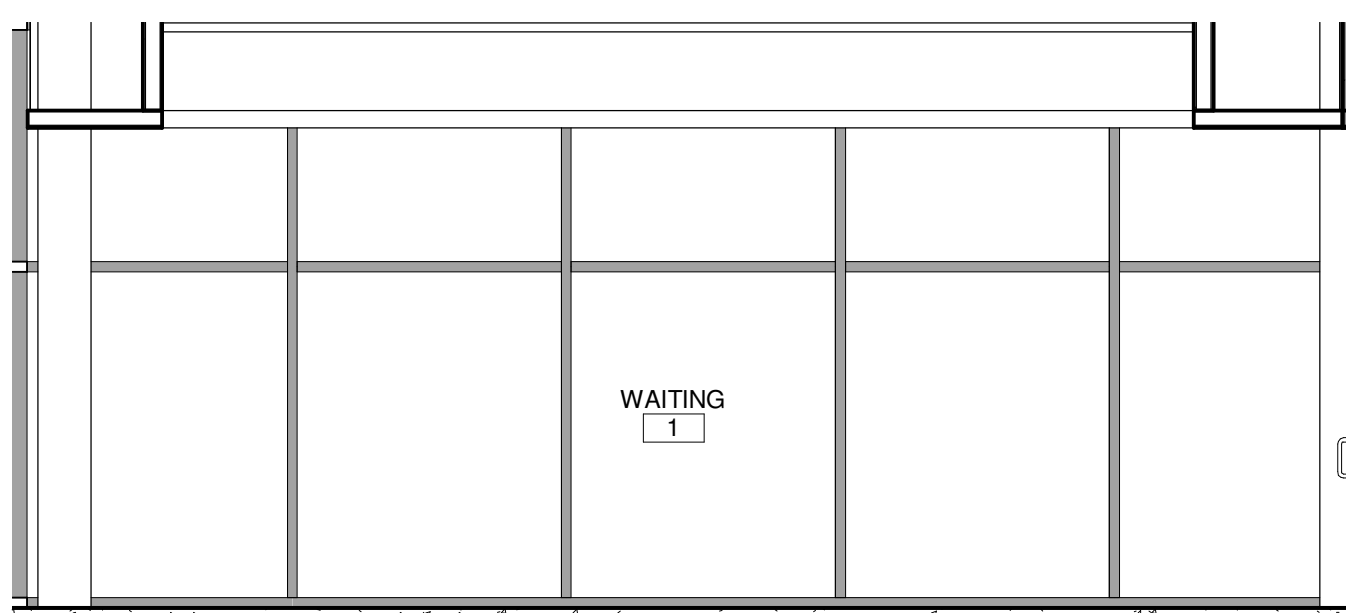


3 WAITING ROOM - SOUTH
1/4" = 1'-0"



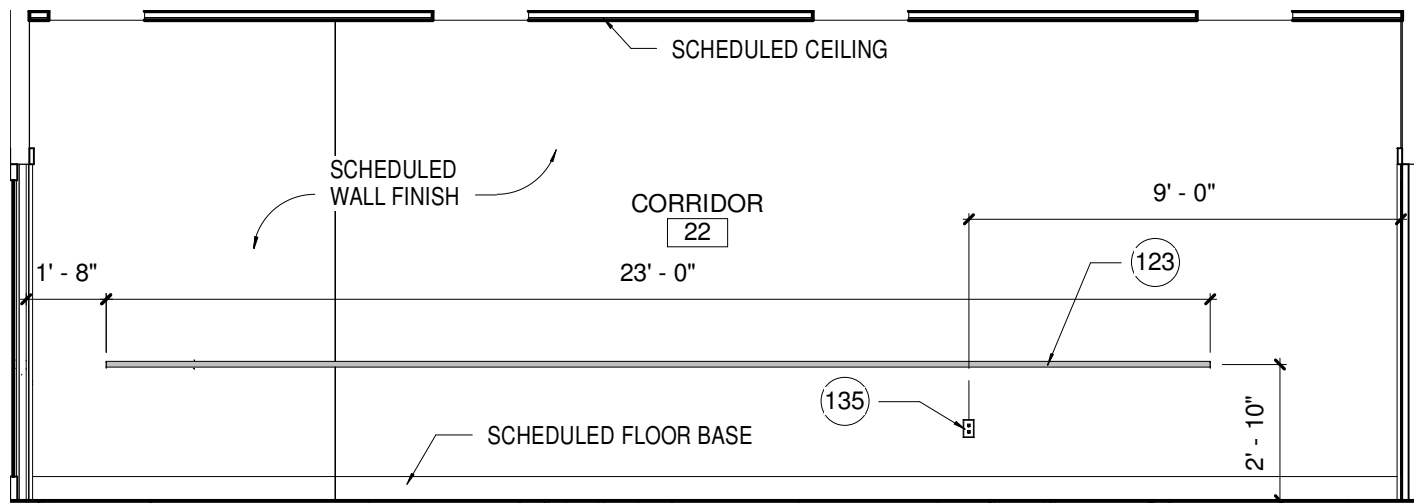
2 WAITING ROOM - EAST
1/4" = 1'-0"

8 WINDOW SYSTEM
CURTAIN WALL

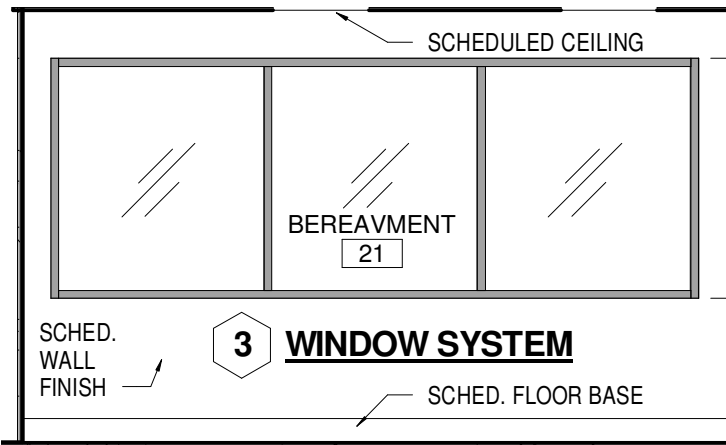


1 WAITING ROOM - NORTH
1/4" = 1'-0"

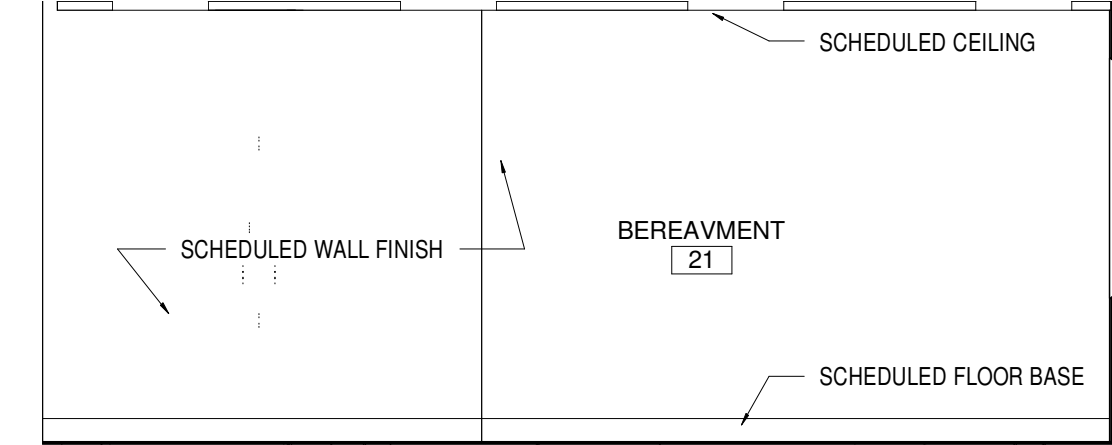
1 WINDOW SYSTEM
STORE FRONT



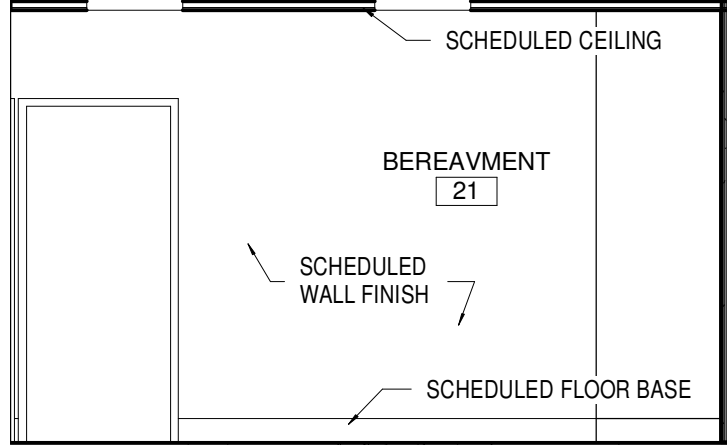
9 CORRIDOR HANDRAIL ELEVATION
1/4" = 1'-0"



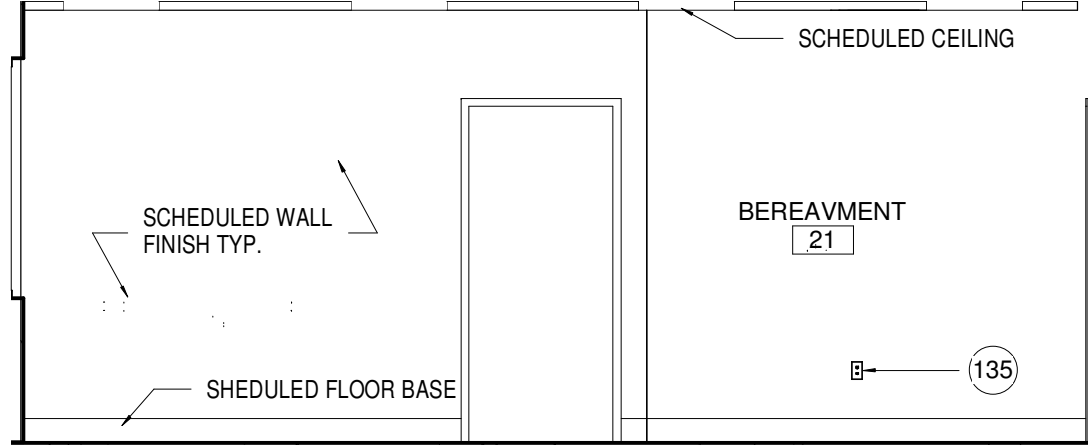
8 BEREAVMENT - WEST
1/4" = 1'-0"



7 BEREAVMENT - SOUTH
1/4" = 1'-0"



6 BEREAVMENT - EAST
1/4" = 1'-0"



5 BEREAVMENT - NORTH
1/4" = 1'-0"

ELEVATION GENERAL NOTES

1. REFER TO MEDICAL EQUIPMENT SHEETS 48-EQS-1 AND 48-EQS-2 FOR ALL EQUIPMENT REQUIRED IN EACH SPACE WITH CORRESPONDING IDENTIFICATION NUMBER. REFER TO MEDICAL PLANNING SPREAD SHEETS AND DATA SHEETS FOR EQUIPMENT NUMBERS AND DESCRIPTIONS.
2. REFER TO 48-EQS-3 FOR MEDICAL EQUIPMENT MOUNTING HEIGHTS AND WALL BLOCKING REQUIREMENTS.
3. ALL MILLWORK SHOWN REQUIRES WALL BLOCKING AND SUPPORT WHERE WALL HUNG.
4. ON ELEVATIONS, ALL BEDS AND EXAM CHAIRS SHOWN ARE FOR REFERENCE ONLY, UNLESS OTHERWISE NOTED. REFER TO MEDICAL EQUIPMENT PLANS AND DATA SHEETS FOR SPECIFIC IDENTIFICATIONS NUMBERS AND DESCRIPTIONS TO BE PROVIDED.
5. REFER TO MECHANICAL, ELECTRICAL AND PLUMBING SHEETS FOR UTILITY AND GASES REQUIRED FOR EACH ROOM. COORDINATE WITH INDICATIONS SHOWN ON MEDICAL EQUIPMENT DRAWINGS AND DATA SHEETS.
6. ALL EXPOSED WALLS IN EACH ROOM WILL HAVE 4" HIGH BASE COVE. TOILET AREAS WILL HAVE 6" CERAMIC TILE BASE. REFER TO INTERIORS DRAWINGS AND SPECIFICATIONS FOR STYLE TYPE AND COLORS.

KEYNOTES	
KEYNOTE No.	DESCRIPTION
123	HANDRAILS, MOUNT TO REINFORCED WINDOW FRAME, REFER TO WINDOW TYPE DRAWING.
135	WALL PHONE ADA HEIGHT 42" AFF-CORRIDORS, REFER TO ELECTRICAL DRAWINGS FOR ALL WALL PHONE LOCATIONS.



△	Date	Revision