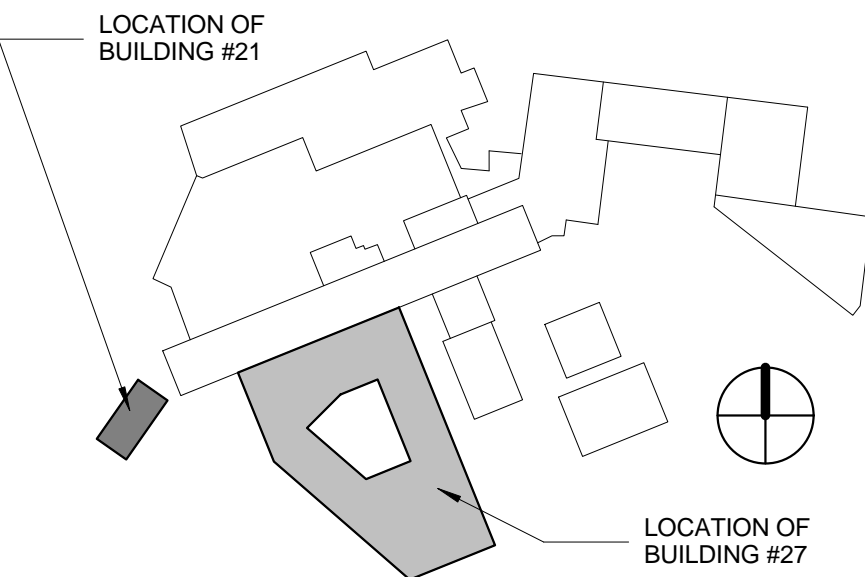


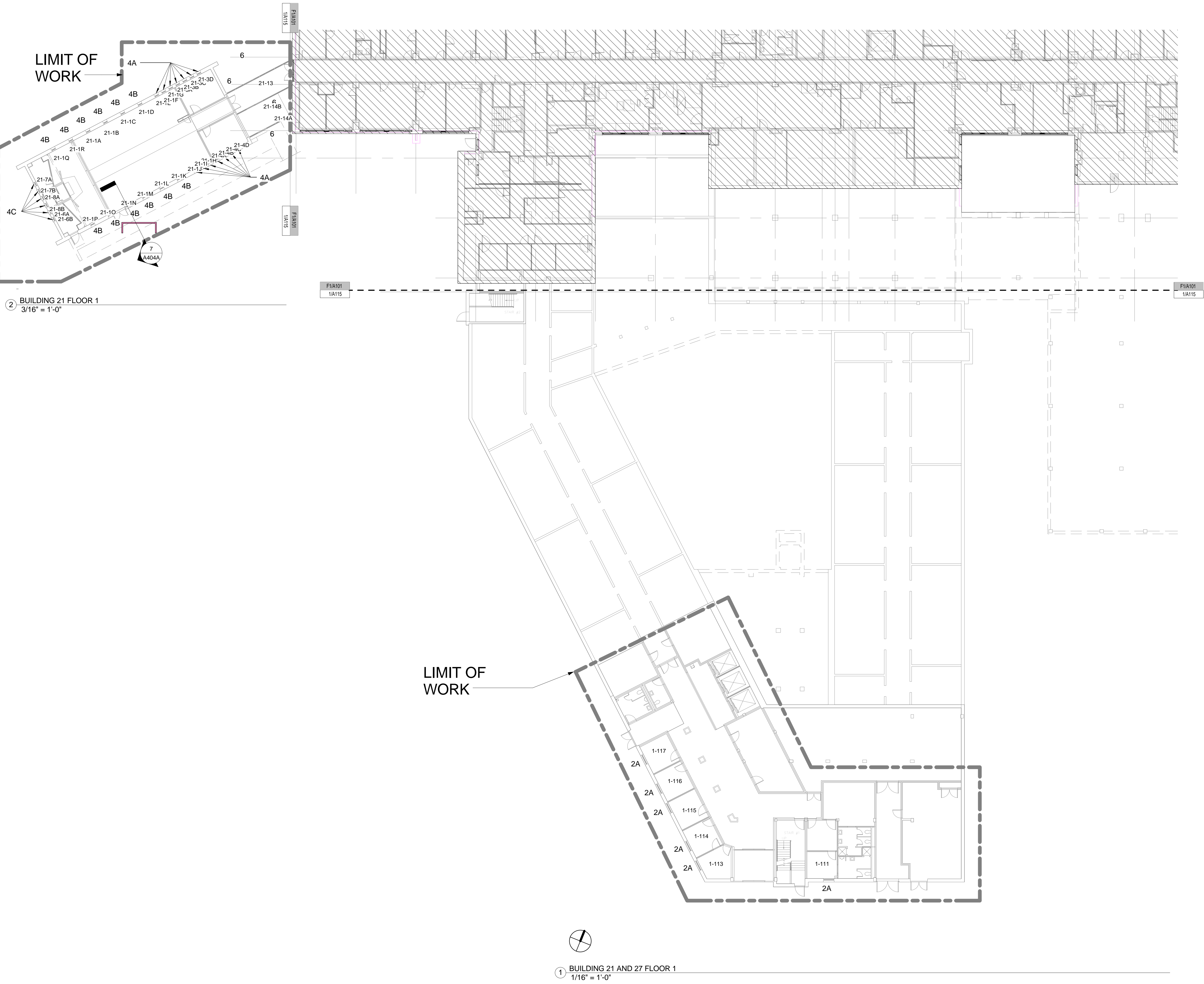
GENERAL NOTES

NOT IN CONTRACT, N.I.C.

- REFER TO A600 SERIES SHEETS FOR WINDOW SCHEDULES.
- REFER TO SHEET G1002 FOR ARCHITECTURAL GENERAL NOTES.
- REFER TO SHEET AD001 FOR DEMOLITION GENERAL NOTES.



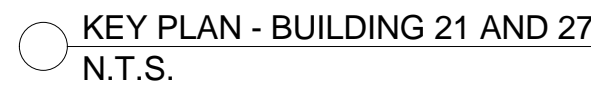
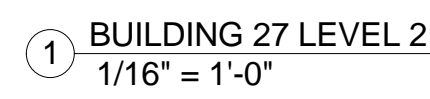
KEY PLAN - BUILDING 21 AND 27  
N.T.S.



<b>CONSULTANTS:</b>		<b>ARCHITECT/ENGINEER:</b>		Scale As indicated		Drawing Title BUILDING 21 AND 27 - FLOOR 1 PLAN		Project Title REPLACE CLC WINDOWS		VA Project Number 693-16-920		<b>Office of Facilities Management</b>					
Architects-Interiors Apogee Consulting Group, PA		Structural Engineer Company Name		MEP Engineer Company Name		Fire Protection Company Name		Location 1111 East End Blvd., Wilkes-Barre, PA, 18711		Building Number				Drawing Number A115			
410 East 21 Street Chester, PA 19013 Tel: (610) 301-0227		Address City, State XXXXX Tel: (xxx) xxx-xxxx Fax: (xxx) xxx-xxxx		Address City, State XXXXX Tel: (xxx) xxx-xxxx Fax: (xxx) xxx-xxxx		Address City, State XXXXX Tel: (xxx) xxx-xxxx Fax: (xxx) xxx-xxxx		Approved: Project Director		Date PA, 18711		Checker		Author		Dwg. of	
Revisions		Date		Apogee Project # -----													



NOT IN CONTRACT, N.I.C.



<a href="#">Architects/Interior</a>	<a href="#">Structural Engineer</a>	<a href="#">MEP Engineer</a>	<a href="#">Fire Protection</a>
Apogee Consulting Group, PA	Company Name	Company Name	Company Name
410 East 21 Street Chester, PA 19310 Tel (610) 301-0227	Address City, State XXXXXX Tel (xxx) xxx-xxxx Fax (xxx) xxx-xxxx	Address City, State XXXXXX Tel (xxx) xxx-xxxx Fax (xxx) xxx-xxxx	Address City, State XXXXXX Tel (xxx) xxx-xxxx Fax (xxx) xxx-xxxx

  
**APOGEE**  
Consulting Group, PA  
[www.acg-pa.com](http://www.acg-pa.com)

Raleigh, NC  
Indianapolis, IN  
Philadelphia, PA  
Fort Collins, CO  
Norman, OK  
  
(919)858-7420

Apogee Project # -----

Approved: Project Director

Location		1111 East End Blvd., Wilkes-Barre,	
Date	PA, 18711	Drawn	

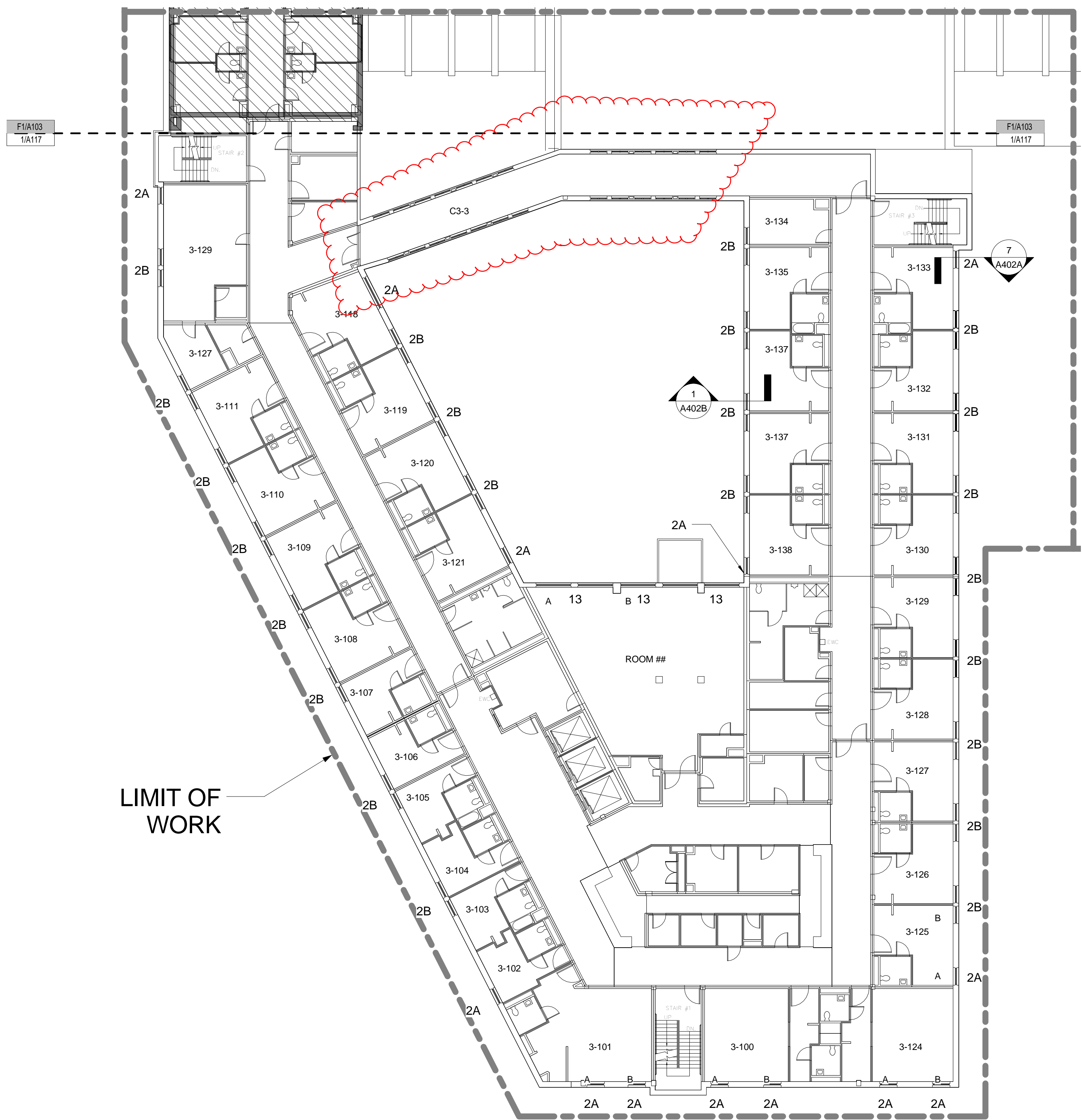
Building Number	
Drawing Number	A116

 Department of

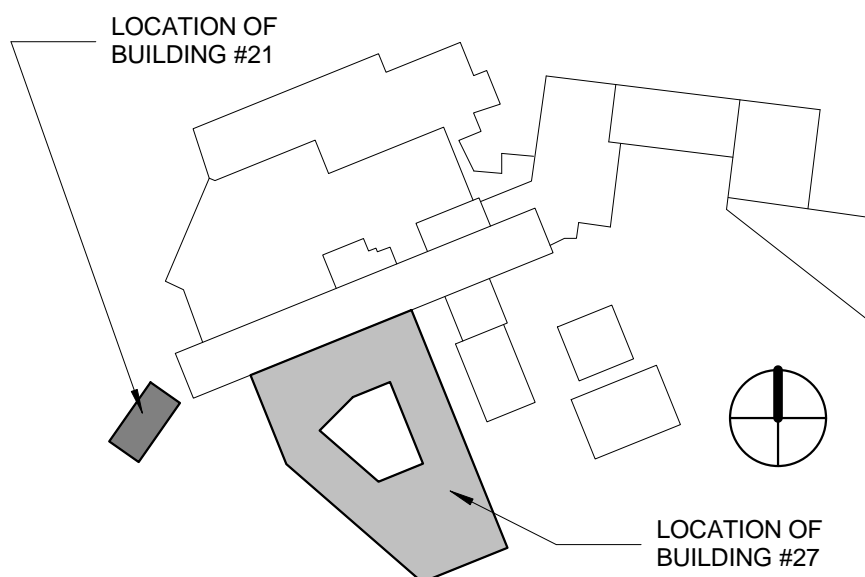
GENERAL NOTES

NOT IN CONTRACT, N.I.C.

- REFER TO A600 SERIES SHEETS FOR WINDOW SCHEDULES.
- REFER TO SHEET G1002 FOR ARCHITECTURAL GENERAL NOTES.
- REFER TO SHEET AD001 FOR DEMOLITION GENERAL NOTES.



1 BUILDING 27 LEVEL 3  
1/16" = 1'-0"



KEY PLAN - BUILDING 21 AND 27  
N.T.S.

CONSULTANTS:

Architects-Interiors	Structural Engineer	MEP Engineer	Fire Protection
Apogee Consulting Group, PA	Company Name	Company Name	Company Name
410 East 21 Street Chester, PA 19013 Tel: (610) 301-0227	Address City, State XXXXX Tel: (xxx) xxx-xxxx Fax: (xxx) xxx-xxxx	Address City, State XXXXX Tel: (xxx) xxx-xxxx Fax: (xxx) xxx-xxxx	Address City, State XXXXX Tel: (xxx) xxx-xxxx Fax: (xxx) xxx-xxxx

ARCHITECT/ENGINEER:

**APOGEE**  
Consulting Group, PA  
www.acg-pa.com  
Apogee Project # -----

Raleigh, NC  
Indianapolis, IN  
Philadelphia, PA  
Fort Collins, CO  
Norman, OK  
(919)858-7420

Scale  
As indicated

Drawing Title  
BUILDING 21 AND 27 - FLOOR 3 PLAN

Project Title  
REPLACE CLC WINDOWS

VA Project Number  
693-16-920

Building Number

Office of  
Facilities  
Management



Approved: Project Director

Location  
1111 East End Blvd., Wilkes-Barre,  
Date PA, 18711

Drawing Number  
A117

Checker  
Author

Dwg. of