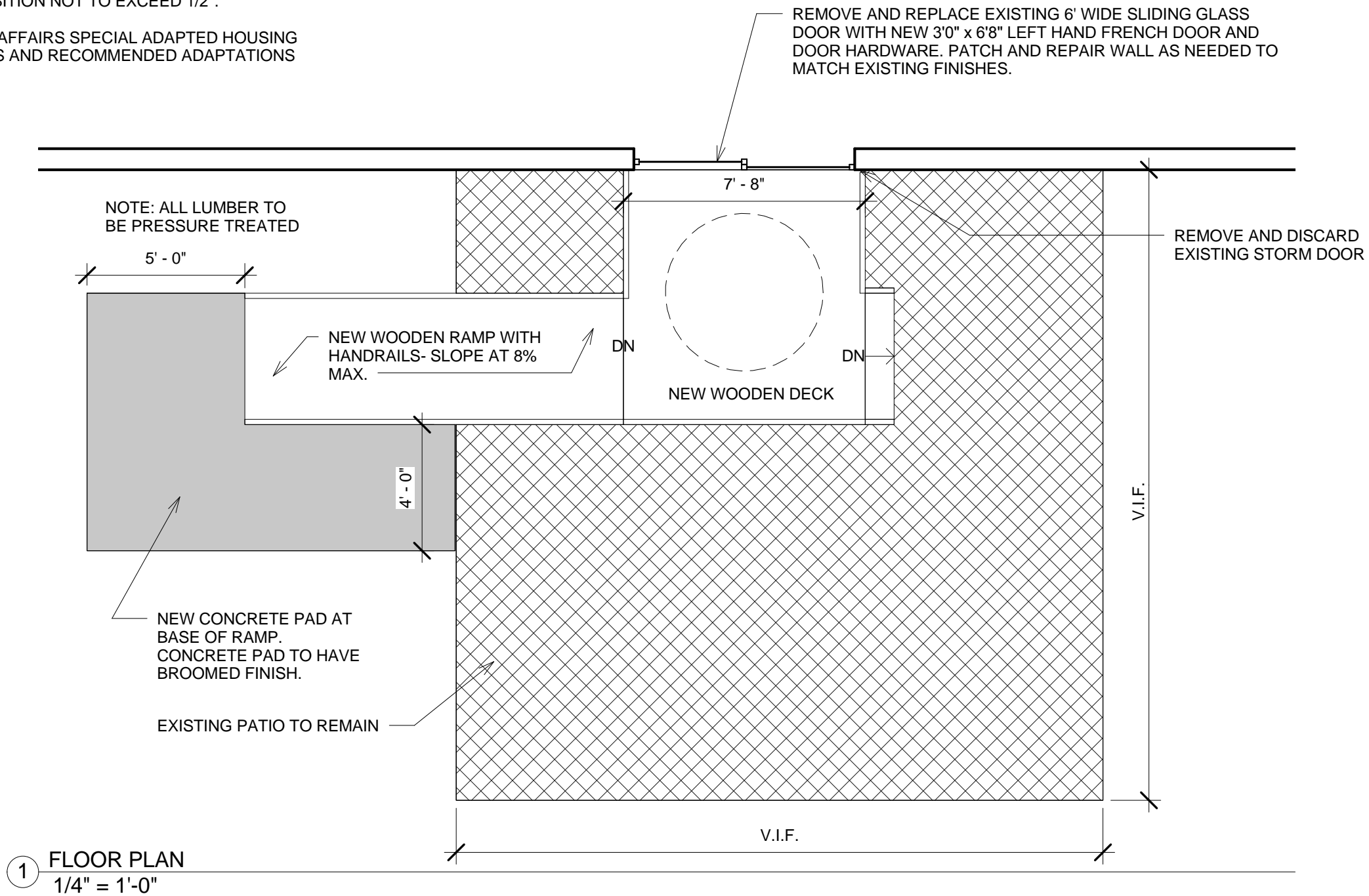
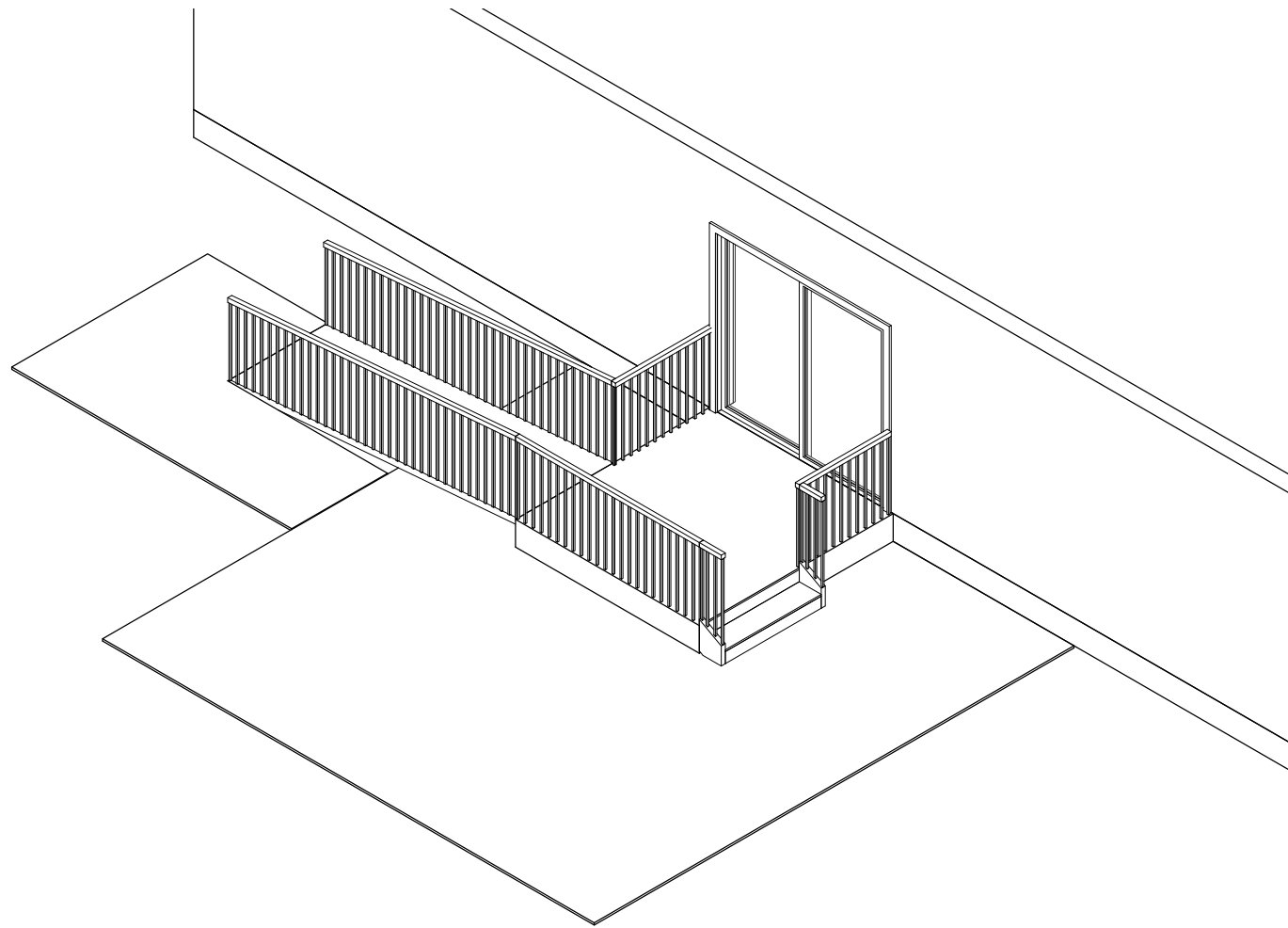


NOTE:
BUILD NEW WOODEN DECK, SKIRT, RAMP, GUARD/HAND RAILING AND STEP
TO COMPLY WITH VA SAH STANDARDS. DECK TO ALIGN WITH EXISTING
LIVING ROOM FLOOR LEVEL.

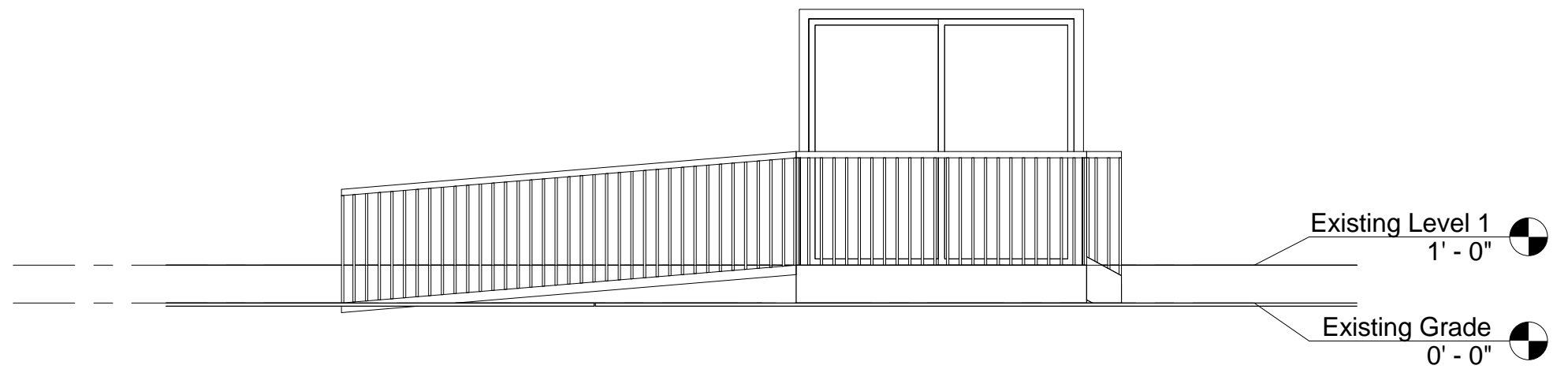
- RAMP AND DECK TO BE PERMANENTLY INSTALLED.
- 1/4" SPACING BETWEEN DECK BOARDS.
- MINIMUM 5" CURB EACH SIDE OF RAMP.
- MINIMUM INSIDE-TO-INSIDE HANDRAIL DISTANCE = 42".
- RAIL CLEARANCE DISTANCE FROM MOUNTING SURFACE = 1-1/2" TO 2".
- HANDRAILS TO BE A SMOOTH CONTINUOUS SURFACE.
- RAMP TO HARDSCAPE / CONCRETE PAD TRANSITION NOT TO EXCEED 1/2".
- PATIO DOOR TO RAMP DECK TRANSITION NOT TO EXCEED 1/2".

REFER TO U.S. DEPT. OF VETERANS AFFAIRS SPECIAL ADAPTED HOUSING
MINUMIM PROPERTY REQUIREMENTS AND RECOMMENDED ADAPTATIONS
FOR ADDITIONAL REQUIREMENTS.





2 EXTERIOR VIEW #1



1 SOUTH ELEVATION
1/4" = 1'-0"