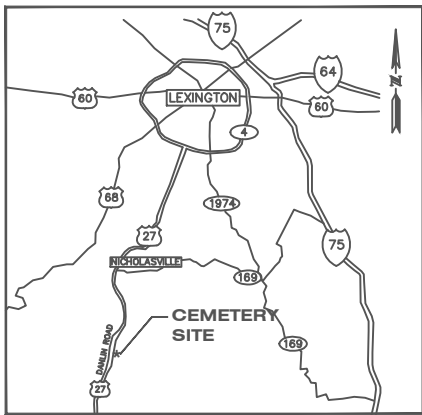


Camp Nelson National Cemetery

Nicholasville, KY

Design-Build Request for Proposal
750 Niche Columbarium

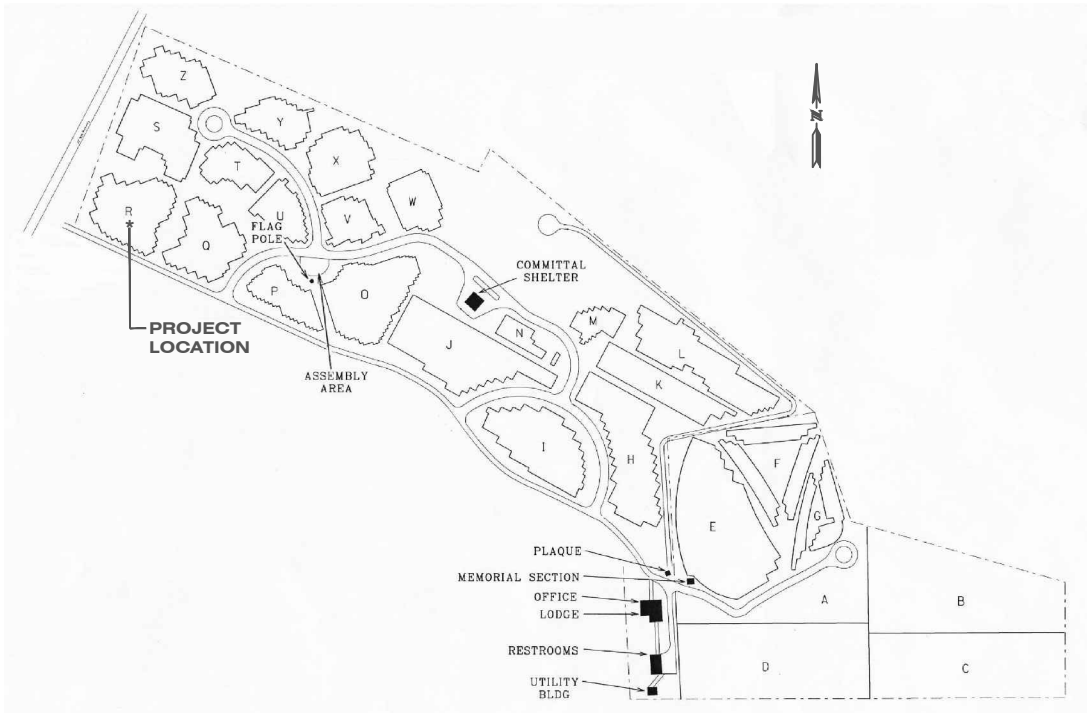
Project No. 833CM3025



VICINITY MAP
NOT TO SCALE

DRAWING LIST


| | |
|-------|-----------------------|
| RFP-1 | COVER SHEET |
| RFP-2 | EXISTING CONDITIONS |
| RFP-3 | COLUMBARIUM DETAILS 1 |
| RFP-4 | COLUMBARIUM DETAILS 2 |
| RFP-5 | COLUMBARIUM DETAILS 3 |



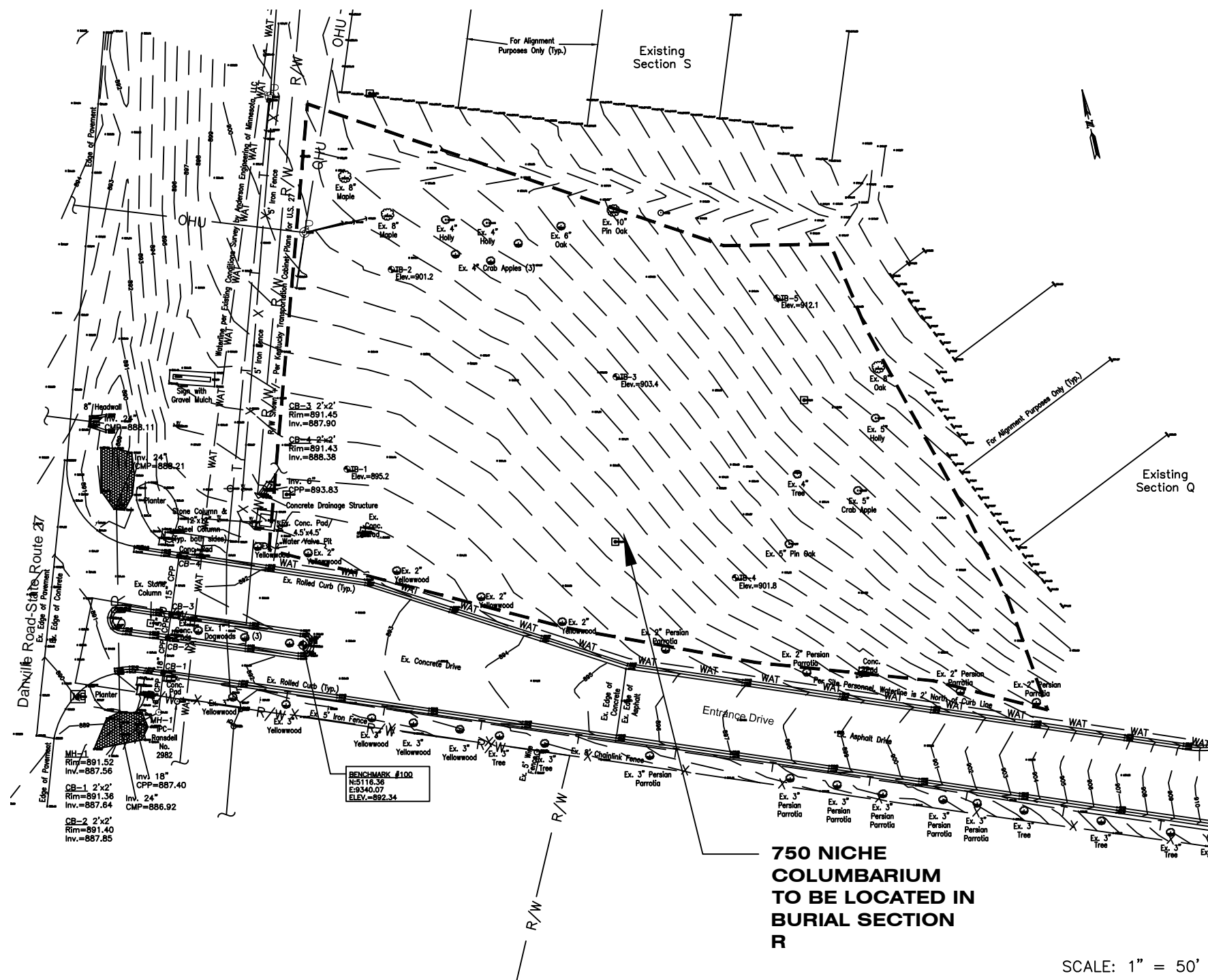
PROJECT LOCATION MAP
NOT TO SCALE

| | | | | | | | | |
|-----------|------|--|--|--|--|---------------|--------------------------|--------------------------------|
| | | | Drawing Title | | Project Title | | Date | |
| | | | Cover Sheet | | 750 Niche Columbarium (Request for Design Build Proposal) | | DEC 6, 2011 | |
| | | | | | | | Project No. 833CM3025 | |
| | | | Approved: Director Office of Construction Management | | Building Number | Checked PO | Drawn JGM | Drawing No. RFP—1 1 of 5 |
| | | | Approved: MSN Director | | Location Camp Nelson National Cemetery Nicholasville, KY | | | |
| Revisions | Date | | | | | | | |

Department of
Veterans Affairs



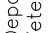


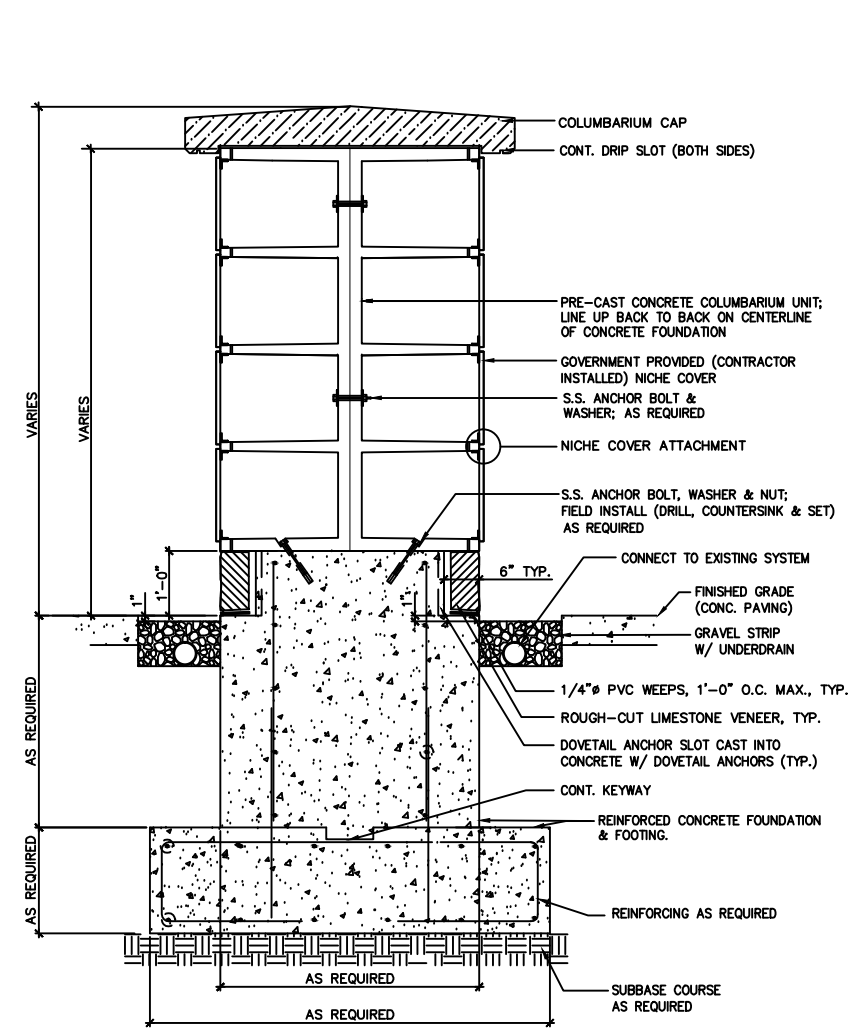


- NOTE:
1. ADDITIONAL REQUIREMENTS AND DETAILS WILL BE PROVIDED BY THE PROJECT MANAGER IN THE SCOPE OF WORK
 2. BASE DRAWING INFORMATION OBTAINED FROM NCA PROJECT 833CM3024 DESIGNED IN 2010.
 3. CONTRACTOR MUST OBTAIN AND VERIFY CURRENT SITE CONDITIONS AT THE PROPOSED PROJECT LOCATION.

| | | | | | | | | |
|--|------|--|---|---------------|---|--------------------------------|--------------------------|--|
| | | | Drawing Title EXISTING CONDITIONS | | Project Title 750 Niche Columbarium (Request for Design Build Proposal) | | Date DEC 6, 2011 | |
| | | | | | | | Project No. 833CM3025 | |
| Approved: Director Office of Construction Management | | | Building Number | Checked PO | Drawn JGM | Drawing No. RFP-2 2 of 5 | | |
| Approved: MSN Director | | | Location Camp Nelson National Cemetery Nicholasville, KY | | | | | |
| Revisions | Date | | | | | | | |

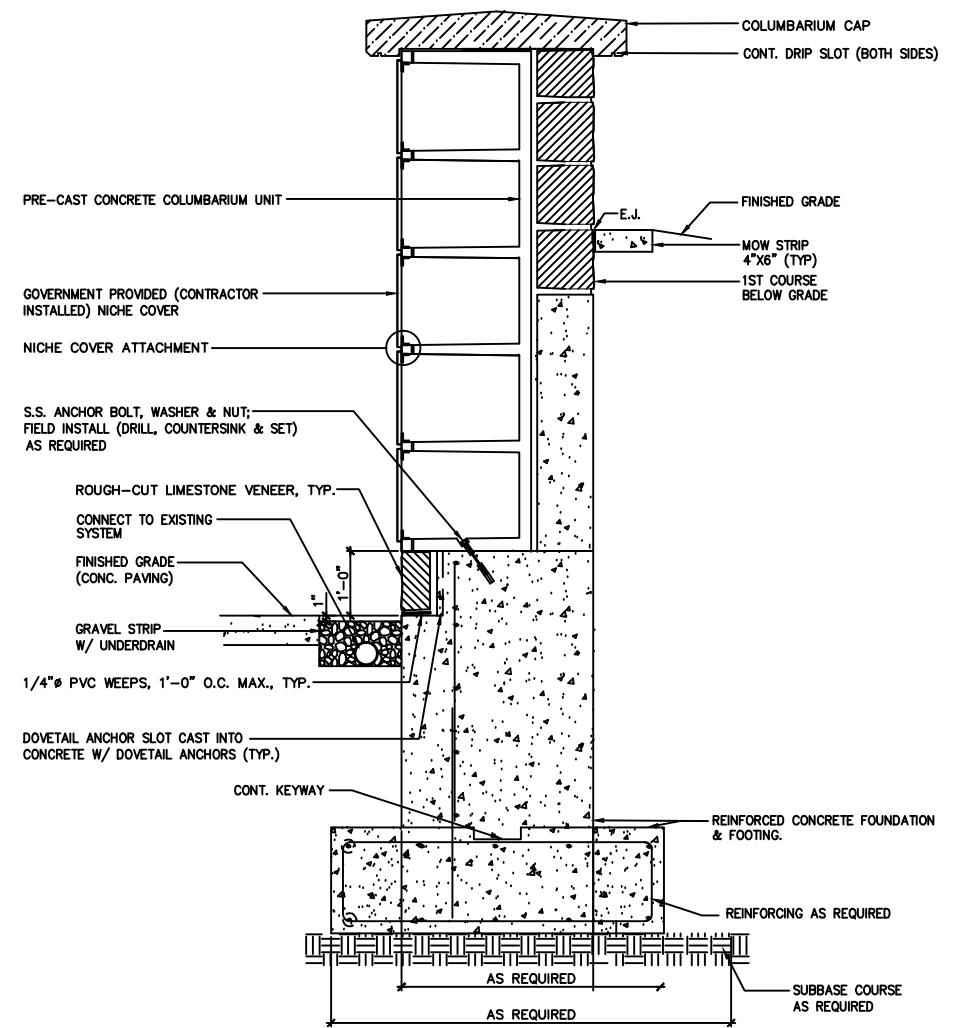
Department of Veterans Affairs






1 COLUMBARIUM WALL DOUBLE SECTION

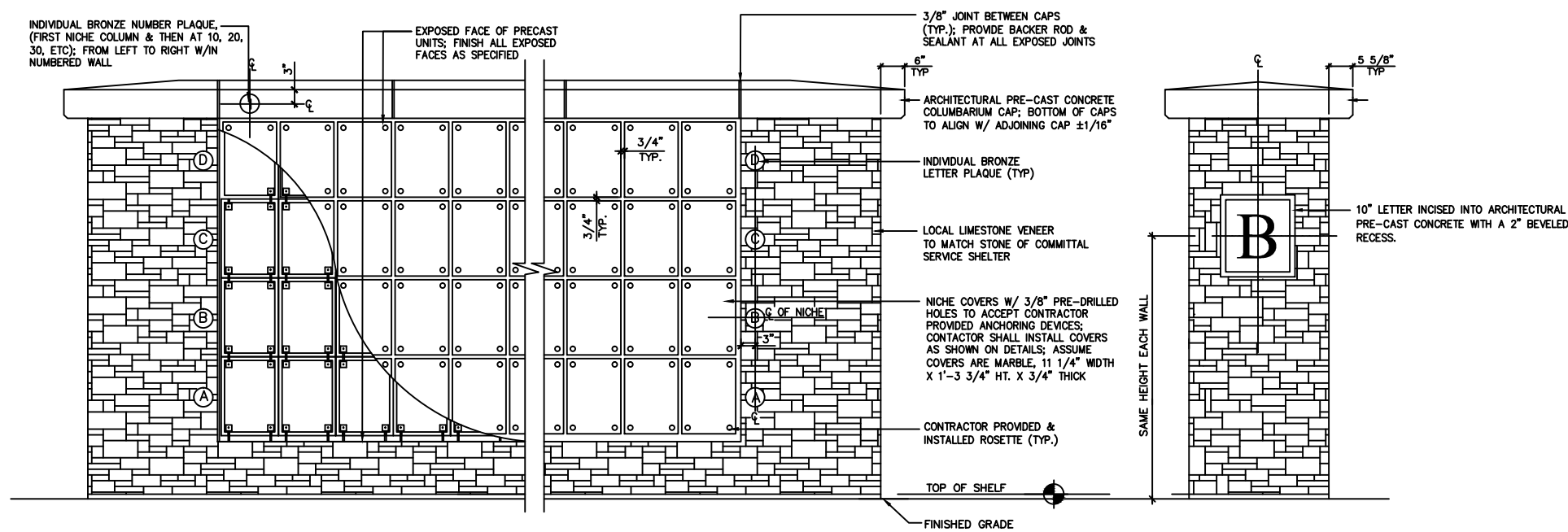
SCALE NTS



2 COLUMBARIUM WALL SINGLE SECTION

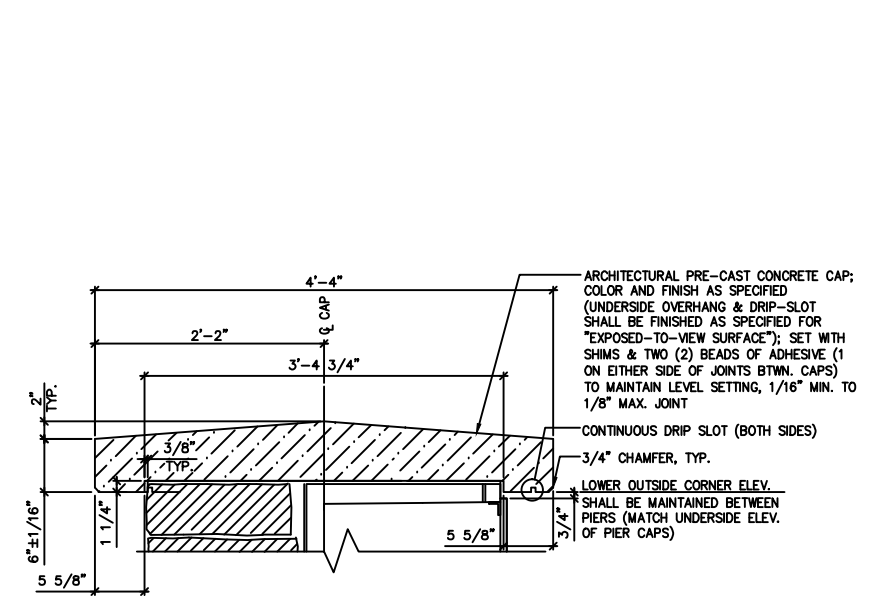
SCALE NTS

| | | | | | | | | | |
|-----------|------|--|--|--|---|---------------|--------------------------------|--------------------------|--|
| Revisions | Date | | Drawing Title | | Project Title | | Date | | Department of Veterans Affairs  |
| | | | Columbarium Details 1 | | 750 Niche Columbarium (Request for Design Build Proposal) | | DEC 6, 2011 | | |
| | | | Approved: Director Office of Construction Management | | Building Number | Checked PO | Drawn JGM | Project No. 833CM3025 | |
| | | | Approved: MSN Director | | Location Camp Nelson National Cemetery Nicholasville, KY | | Drawing No. RFP-7 3 of 5 | | |



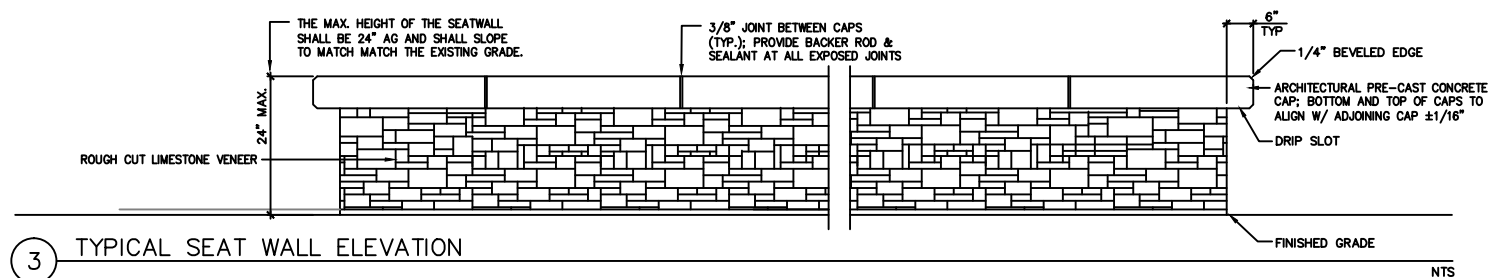
1 TYPICAL COLUMBARIUM WALL ELEVATION

SCALE: NTS



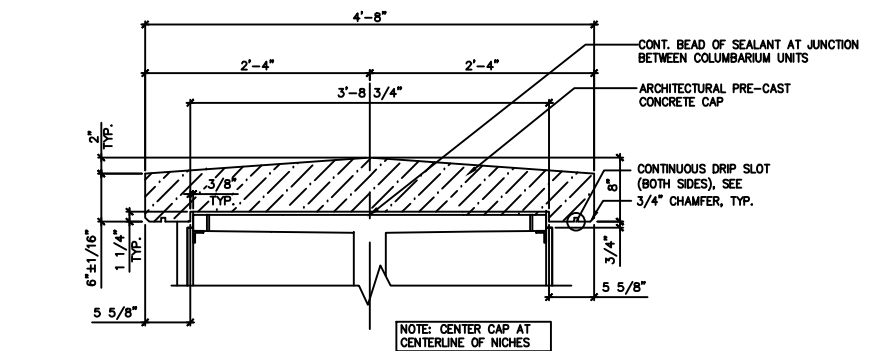
2 PRE-CAST COLUMB. CAP SINGLE

SCALE: NTS



3 TYPICAL SEAT WALL ELEVATION

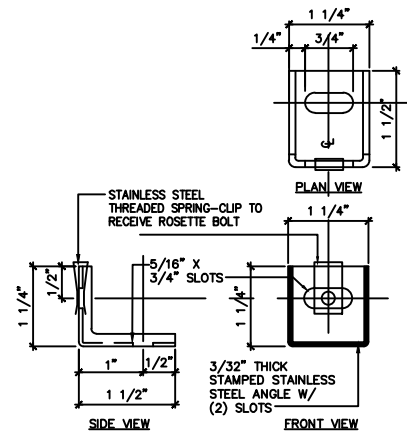
NTS



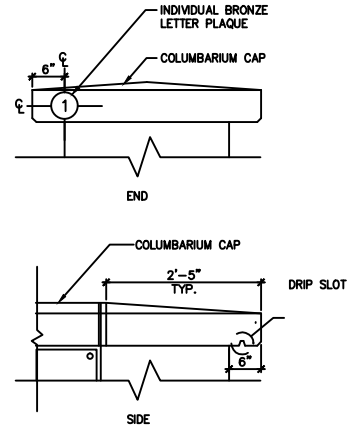
4 PRE-CAST COLUMB. CAP DOUBLE

NTS

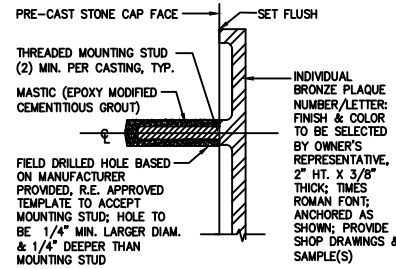
| | | | | | | | | | | | |
|--------------------------------------|--|----------------------------------|--|----------------------------|--|-----------------|---------|-------------|-------------|---|--|
| <div>Revisions</div> <div>Date</div> | | <div>Columbarium Details 2</div> | | Drawing Title | | Project Title | | Date | | <div>Department of Veterans Affairs</div> | |
| | | | | Approved: Division Chief | | Building Number | Checked | Drawn | Project No. | | |
| | | | | Approved: Service Director | | Location | | Drawing No. | | | |
| | | | | Nicholasville, KY | | RFP-8 4 of 5 | | | | | |



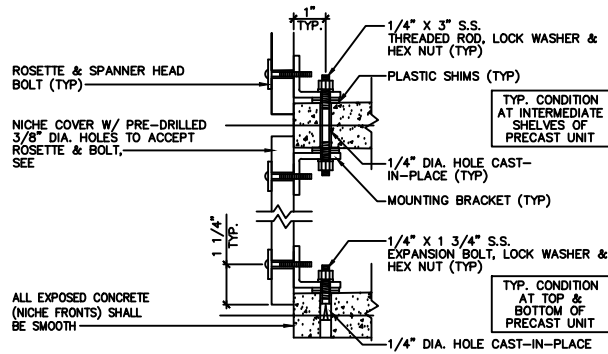
1 MOUNTING BRACKET
NTS



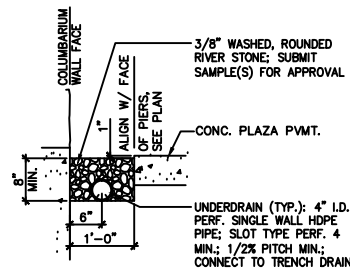
2 END CAP ENLARGEMENT
NOT TO SCALE



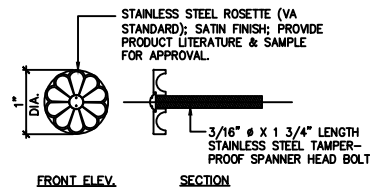
3 BRONZE NUMBER/LETTER PLAQUE
N.T.S.



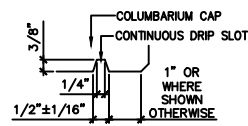
4 NICHE COVER ATTACHMENT
NTS



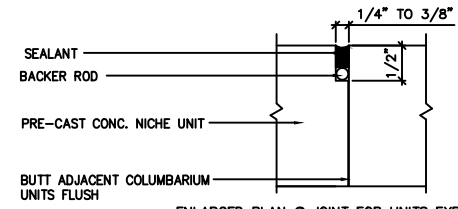
5 GRAVEL STRIP
NTS



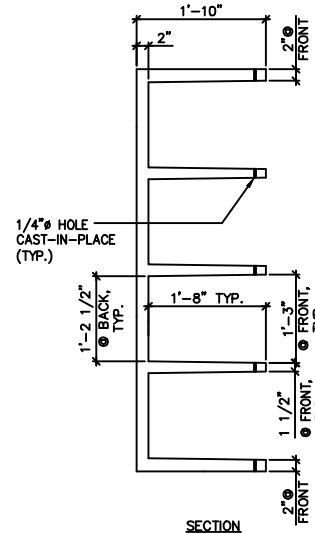
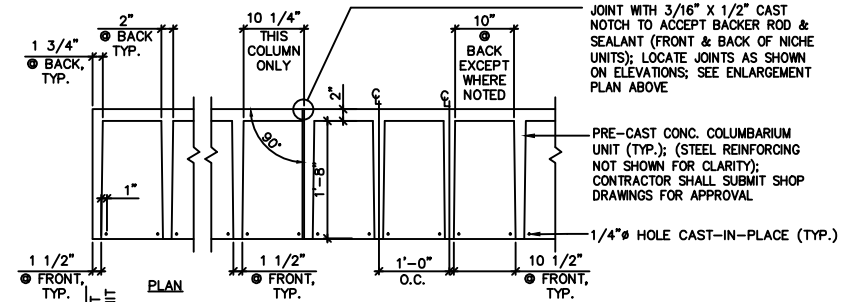
6 ROSETTES
NTS



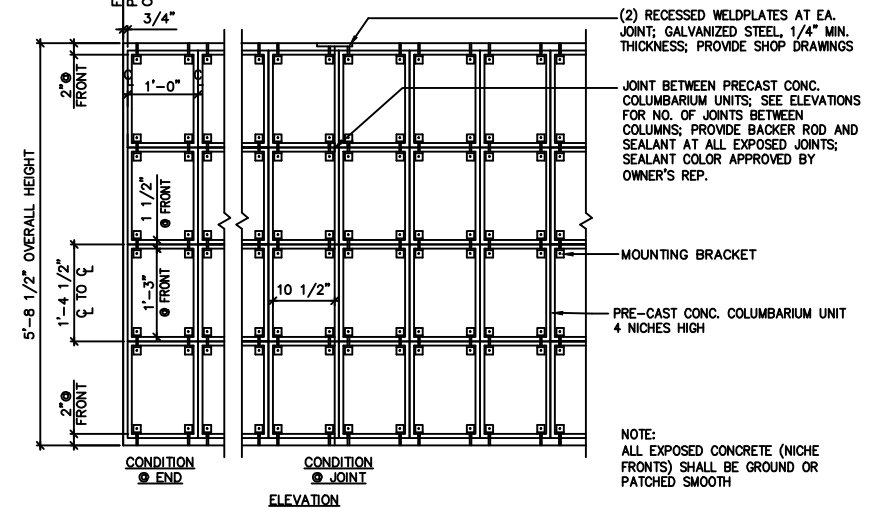
7 DRIP SLOT
NTS



ENLARGED PLAN OF JOINT FOR UNITS EXPOSED TO VIEW
NOT TO SCALE



8 PRE-CAST CONCRETE COLUMBARIUM UNITS
SCALE NTS



| | |
|-----------|------|
| | |
| | |
| Revisions | Date |

| |
|--|
| |
|--|

| |
|--|
| Drawing Title |
| Columbarium Details 3 |
| Approved: Director Office of Construction Management |
| Approved: MSN Director |

| |
|--|
| Project Title |
| 750 Niche Columbarium (Request for Design Build Proposal) |
| Building Number |
| Location Camp Nelson National Cemetery Nicholasville, KY |

| |
|-----------------|
| Date |
| DEC 6, 2011 |
| Project No. |
| 833CM3025 |
| Drawing No. |
| RFP-9 5 of 5 |