



WIRE & CONDUIT SIZE SCHEDULE
(UNLESS OTHERWISE SHOWN)

PANEL	PPA (EXISTING)	208/120 VOLTS	3 PHASE	4 WIRE	1200 AMPS
		SOLID NEUTRAL: YES		NEMA TYPE: 1	
		GROUND BUS: YES		A.I.C. SYM. 65K MOUNTING	
LOCATION: BUILDING #3		SURFACE			
REMARKS: EXISTING SQUARE D I LINE TYPE, CAT. NO. HCM2364-4.					

DESCRIPTION	CONNECTION KVA	C.B.-AMPS			C.B.-AMPS			CONNECTION	DESCRIPTION
		P	TRIP	NO.	KV	P	TRIP		
(E) WELDER	5.0	2	1		2	3			
			50	3		6	100	18.0	(E) BOILER #1
(E) PUMP#1	16.5		7		8	3			
			100	9		12		18.0	(E) BOILER #2
		3	11		10	12	100		
(E) PUMP#2	16.5		13		14	3			
			100	15		16		18.0	(E) BOILER #3
		3	17		18	100			
(E) PUMP#3	16.5		19		20	3			
			100	21		22		25.0	(E) TEMPORARY
		3	23		24	100			
(E) PANEL ESP	27.0		25		26	3			
			150	27		28		3.0	(E) COND P#1
		3	29		30	20			
(N) GEN PANEL	13.6		31		32	3			
			50	33		34		3.0	(E) COND P#2
		3	35		36	20			
(E) PNL LBH1	30.0		37		38	1		0.0	SPACE
			150	39		40		0.0	SPACE
		3	41		42	1		0.0	SPACE
(N) FUEL PUMP	1.2		43		44	1		0.0	SPACE
SPACE	0.0	1	45		46	1		0.0	SPACE
SPACE	0.0	1	47		48	1		0.0	SPACE
SPACE	0.0	1	51		52	1		0.0	SPACE
SPACE	0.0	1	53		54	1		0.0	SPACE
SPACE	0.0	1	55		56	1		0.0	SPACE
SPACE	0.0	1	57		58	1		0.0	SPACE
SPACE	0.0	1	59		60	1		0.0	SPACE

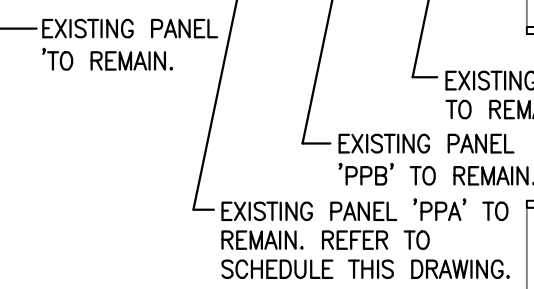
* PROVIDE NEW CIRCUIT BREAKER TO MATCH EXISTING.
EXISTING CONNECTED LOAD = 196.5 KVA.
NEW CONNECTED LOAD = 14.8 KVA.
TOTAL CONNECTED LOAD = 211.3 KVA = 586.9 AMPS

PANEL GEN4 <div style="border: 1px solid black; padding: 2px; display: inline-block;">(NEW)</div>	208/120 VOLTS	3 PHASE	4 WIRE	100 AMPS
	SOLID NEUTRAL: YES	NAME TYPE: 1	100 MCB/MLO	
GROUND BUS: YES	A.I.C. SYM 10K	STD. FRAME SURFACE		
LOCATION _____ MOUNTING _____				
REMARKS: _____				

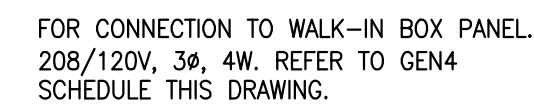
DESCRIPTION	CONNECTION KVA	C.B.—AMPS		A B C	C.B.—AMPS		CONNECTION KVA	DESCRIPTION
		P	TRIP		N	TRIP		
LIGHTS	0.4	1	20	1	2	10	1.5	SPACE HEATER
RECEPTACLES	0.6	1	20	3	4	1	1.5	SPACE HEATER
EXHAUST FAN	0.8	1	20	5	6	1	1.5	COOLANT HEATER
BATTERY CHGR	0.2	1	20	7	8	1	1.5	BLOCK HEATER
CONTROLS	0.2	1	20	9	10	1	0.2	COND HEATER
SUMP PUMP	1.2	1	20	11	12	1	20	SPARE
SPACE	0.0	1	20	13	14	1	20	0.0
SPACE	0.0	1	20	15	16	1	20	0.0
SPACE	0.0	1	20	17	18	1	20	0.0
SPACE	0.0	1	20	19	20	3		
SPACE	0.0	1	20	21	22		4.0	PUMP 3—P-3
SPACE	0.0	1	20	23	24	20		

TOTAL CONNECTED LOAD = 13.6 KVA = 37.8 AMPS

TOTAL CONNECTED LOAD = 13.6 KVA = 37.8 AMPS.



BILL OF MATERIAL		
QTY	DESCRIPTION	UNIT
20W-1	ALUMINUM C-CHANNEL	(00)
5505	ACCESS DOOR	5
5510	STAINLESS STEEL DOOR HINGERS	5
5515	DOOR LATCH	5
5607	DOOR RESTRAINT	1
5610	HINGE	5
5615	EXTERNAL, VERTICAL, INHINE HOOD	1
5625	INTERNAL, VERTICAL, DISCHARGE PLUMB	1
5630	INTERNAL, VERTICAL, DISCHARGE PLUMB	1
5635	3" YELLOW INSULATION BOARD	1
5640	RAIN GULLY	1
5650	GPC SURFACE DRAINAGE SYSTEM	1
5655	INTRINSICALLY MOISTURE SILENCER	1
5660	INTRINSICALLY MOISTURE SILENCER	1
5665	FLEX GUT-10" 118"X118"	1
5670	FLEX GUT-10" 154"X154"	1
5675	FLEX GUT-10" 154"X154"	1
5680	ELBOW, GUT-24" 18"X18" C-24"	1
5685	ELBOW, GUT-24" 18"X18" C-24"	1
5690	ELBOW, GUT-24" 18"X18" C-24"	1
5695	ELBOW, GUT-24" 18"X18" C-24"	1
5700	ELBOW, GUT-24" 18"X18" C-24"	1
5705	ELBOW, GUT-24" 18"X18" C-24"	1
5710	ELBOW, GUT-24" 18"X18" C-24"	1
5715	ELBOW, GUT-24" 18"X18" C-24"	1
5720	ELBOW, GUT-24" 18"X18" C-24"	1
5725	ELBOW, GUT-24" 18"X18" C-24"	1
5730	ELBOW, GUT-24" 18"X18" C-24"	1
5735	ELBOW, GUT-24" 18"X18" C-24"	1
5740	ELBOW, GUT-24" 18"X18" C-24"	1
5745	ELBOW, GUT-24" 18"X18" C-24"	1
5750	ELBOW, GUT-24" 18"X18" C-24"	1
5755	ELBOW, GUT-24" 18"X18" C-24"	1
5760	ELBOW, GUT-24" 18"X18" C-24"	1
5765	ELBOW, GUT-24" 18"X18" C-24"	1
5770	ELBOW, GUT-24" 18"X18" C-24"	1
5775	ELBOW, GUT-24" 18"X18" C-24"	1
5780	ELBOW, GUT-24" 18"X18" C-24"	1
5785	ELBOW, GUT-24" 18"X18" C-24"	1
5790	ELBOW, GUT-24" 18"X18" C-24"	1
5795	ELBOW, GUT-24" 18"X18" C-24"	1
5800	ELBOW, GUT-24" 18"X18" C-24"	1
5805	ELBOW, GUT-24" 18"X18" C-24"	1
5810	ELBOW, GUT-24" 18"X18" C-24"	1
5815	ELBOW, GUT-24" 18"X18" C-24"	1
5820	ELBOW, GUT-24" 18"X18" C-24"	1
5825	ELBOW, GUT-24" 18"X18" C-24"	1
5830	ELBOW, GUT-24" 18"X18" C-24"	1
5835	ELBOW, GUT-24" 18"X18" C-24"	1
5840	ELBOW, GUT-24" 18"X18" C-24"	1
5845	ELBOW, GUT-24" 18"X18" C-24"	1
5850	ELBOW, GUT-24" 18"X18" C-24"	1
5855	ELBOW, GUT-24" 18"X18" C-24"	1
5860	ELBOW, GUT-24" 18"X18" C-24"	1
5865	ELBOW, GUT-24" 18"X18" C-24"	1
5870	ELBOW, GUT-24" 18"X18" C-24"	1
5875	ELBOW, GUT-24" 18"X18" C-24"	1
5880	ELBOW, GUT-24" 18"X18" C-24"	1
5885	ELBOW, GUT-24" 18"X18" C-24"	1
5890	ELBOW, GUT-24" 18"X18" C-24"	1
5895	ELBOW, GUT-24" 18"X18" C-24"	1
5900	ELBOW, GUT-24" 18"X18" C-24"	1
5905	ELBOW, GUT-24" 18"X18" C-24"	1
5910	ELBOW, GUT-24" 18"X18" C-24"	1
5915	ELBOW, GUT-24" 18"X18" C-24"	1
5920	ELBOW, GUT-24" 18"X18" C-24"	1
5925	ELBOW, GUT-24" 18"X18" C-24"	1
5930	ELBOW, GUT-24" 18"X18" C-24"	1
5935	ELBOW, GUT-24" 18"X18" C-24"	1
5940	ELBOW, GUT-24" 18"X18" C-24"	1
5945	ELBOW, GUT-24" 18"X18" C-24"	1
5950	ELBOW, GUT-24" 18"X18" C-24"	1
5955	ELBOW, GUT-24" 18"X18" C-24"	1
5960	ELBOW, GUT-24" 18"X18" C-24"	1
5965	ELBOW, GUT-24" 18"X18" C-24"	1
5970	ELBOW, GUT-24" 18"X18" C-24"	1
5975	ELBOW, GUT-24" 18"X18" C-24"	1
5980	ELBOW, GUT-24" 18"X18" C-24"	1
5985	ELBOW, GUT-24" 18"X18" C-24"	1
5990	ELBOW, GUT-24" 18"X18" C-24"	1
5995	ELBOW, GUT-24" 18"X18" C-24"	1
6000	ELBOW, GUT-24" 18"X18" C-24"	1</



— FUEL OIL DAY TANK. PUMP 3-P-3, 1HP, 208V, 3 ϕ , + 1.5KW HEATER. REFER TO DRAWING 3-1-M1 FOR DETAILS. PROVIDE NEMA TYPE 3R DISCONNECT SWITCH. CIRCUIT TO PANEL 'GEN4', CIRCUIT NO. 20,22,24. ALL WIRING SHALL BE PER NEC ARTICLE 500.

PPA-41,43,45

1 NEW DUPLEX FUEL OIL PUMPS, 1/2HP, 208V, 3Ø. 3-P-1 AND 3-P-2. ALL WIRING SHALL BE PER MFC ARTICLE 500.

NEW GROUNDING TRIAD. 3-5/8" X 10' CU
GROUND RODS. INTERCONNECT WITH #1
GROUND CONDUCTORS, AND BOND
GENERATOR FRAME PER NEC ARTICLE 250.

SCALE: 1/4" = 1'-0"

REVISION NO. 1-FUEL SYSYTEM	03-08-12
BID DOCUMENTS	09-26-11
95% - CONSTRUCTION DOCUMENTS	09-06-11
75% - CONSTRUCTION DOCUMENTS	08-11-11
50% - DESIGN DEVELOPMENT SUBMISSION	07-08-11
25% - SCHEMATIC SUBMISSION	06-09-11
Revisions	Date

CVA
Culpeper
Veterans
Associates

14801 MURDOCK STREET, SUITE 135A,
CHANTILLY, VA. 20151-1017
(703) 955-7160 FAX (703) 914-1420

