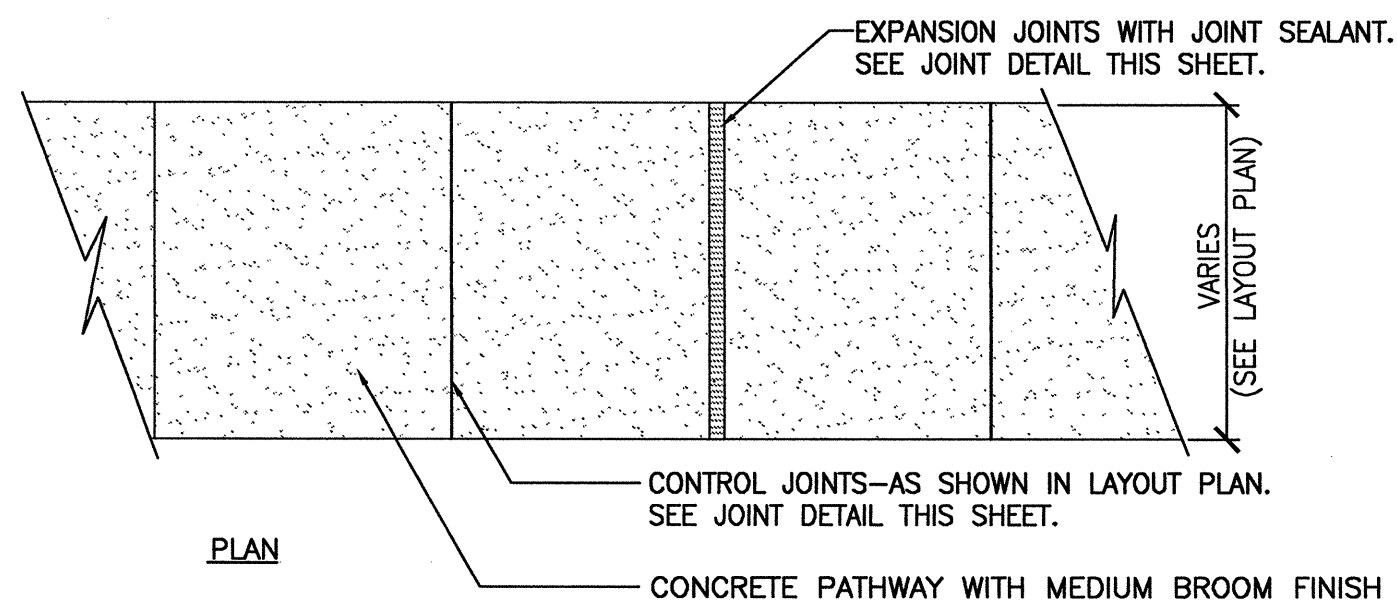
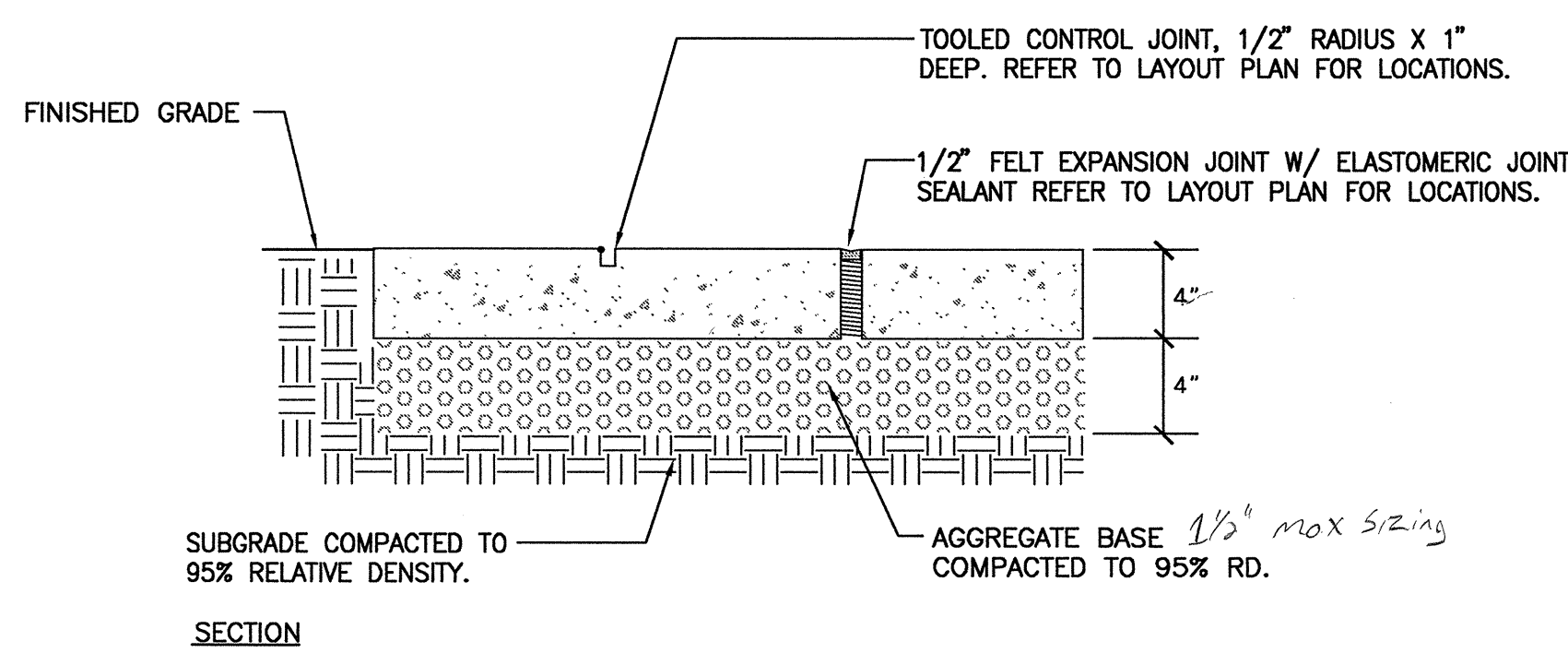
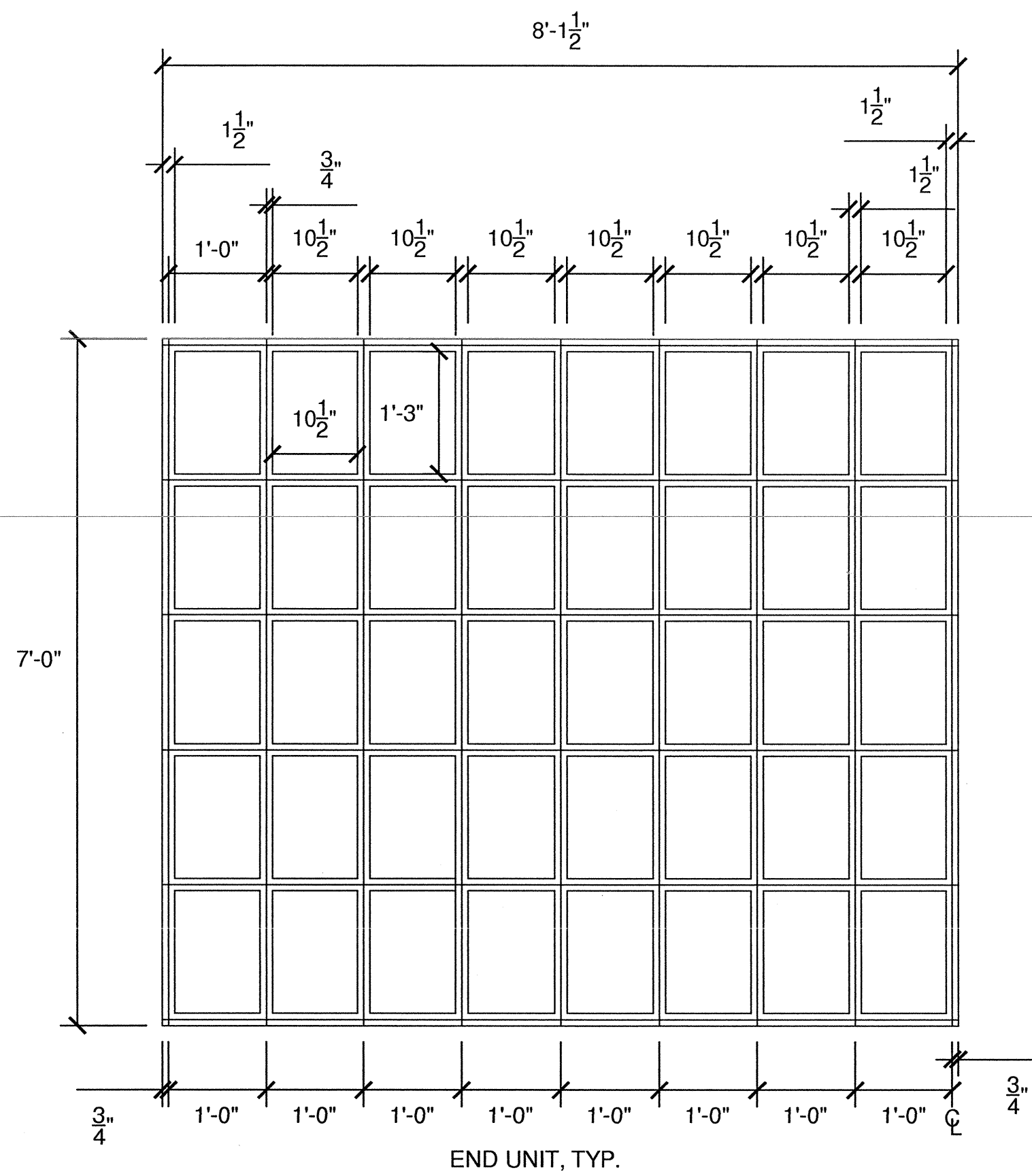


- LEGEND:
- 4000 PSI CONCRETE PER SPECIFICATIONS. FINISH AS SHOWN ON PLANS.
 - WELDED WIRE MESH REINFORCEMENT FABRIC (W6x6 - W1.4x1.4) PLACED IN CENTER OF SECTION. SUPPORT W/ DOBIES AS NEEDED TO KEEP CENTERED. USE MAT FORM ONLY- NO ROLLS.
 - 12" LONG #4 REBAR DOWELS @24" O.C. LOCATED HORIZONTALLY IN CENTER OF SLAB. PAPER-WRAP ONE END TO ALLOW FREE MOVEMENT.
 - 1/2" THICK ASPHALT-IMPREGNATED FELT; FULL JOINT DEPTH.
 - PLASTIC KEYWAY JOINT, FULL WIDTH AND DEPTH OF SLAB.
 - JOINT SEALANT (REFER TO SPECIFICATIONS); COLOR TO MATCH ADJACENT PAVING.
 - 1/2" RADIUS TOOLED EDGE.

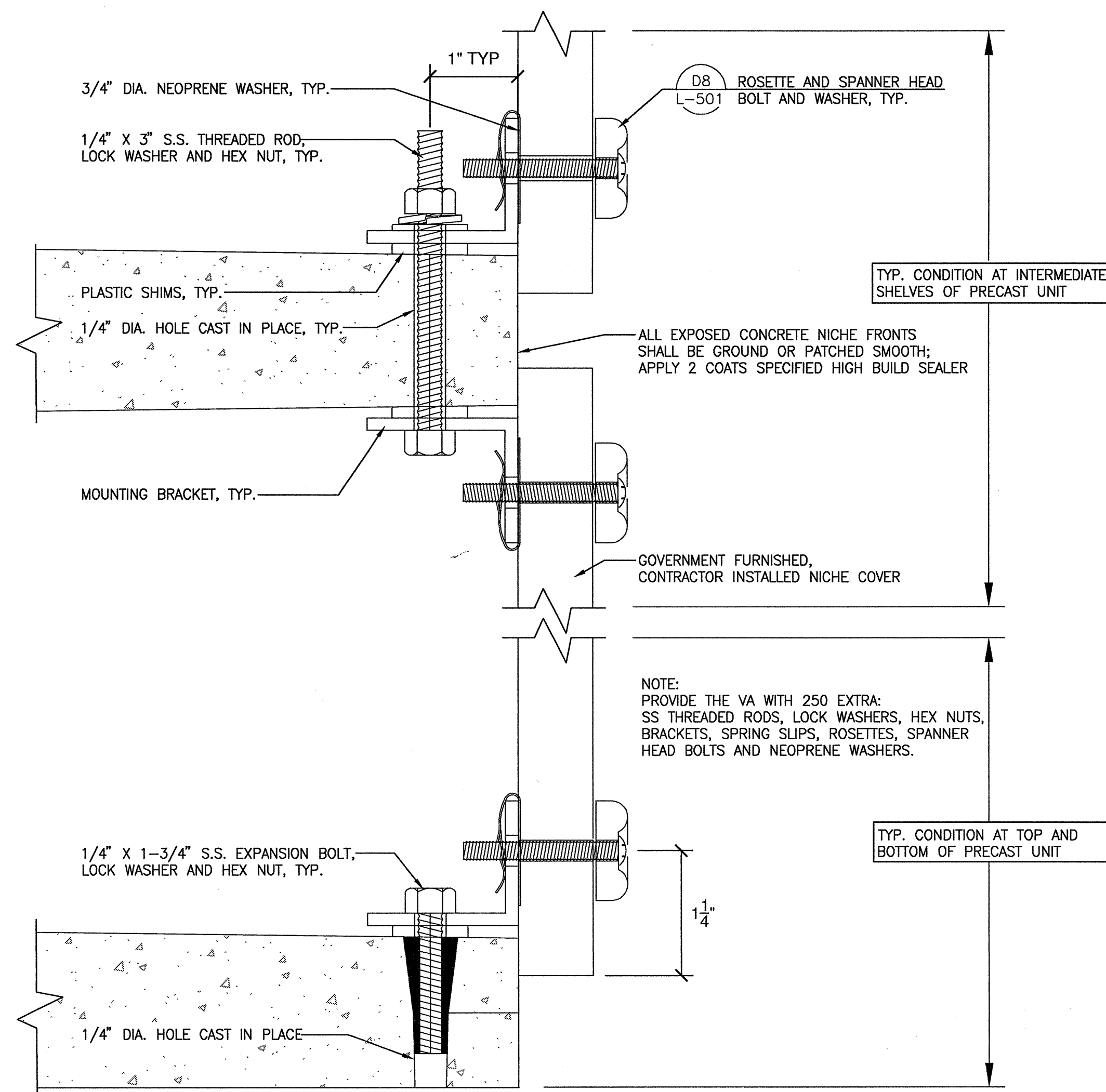
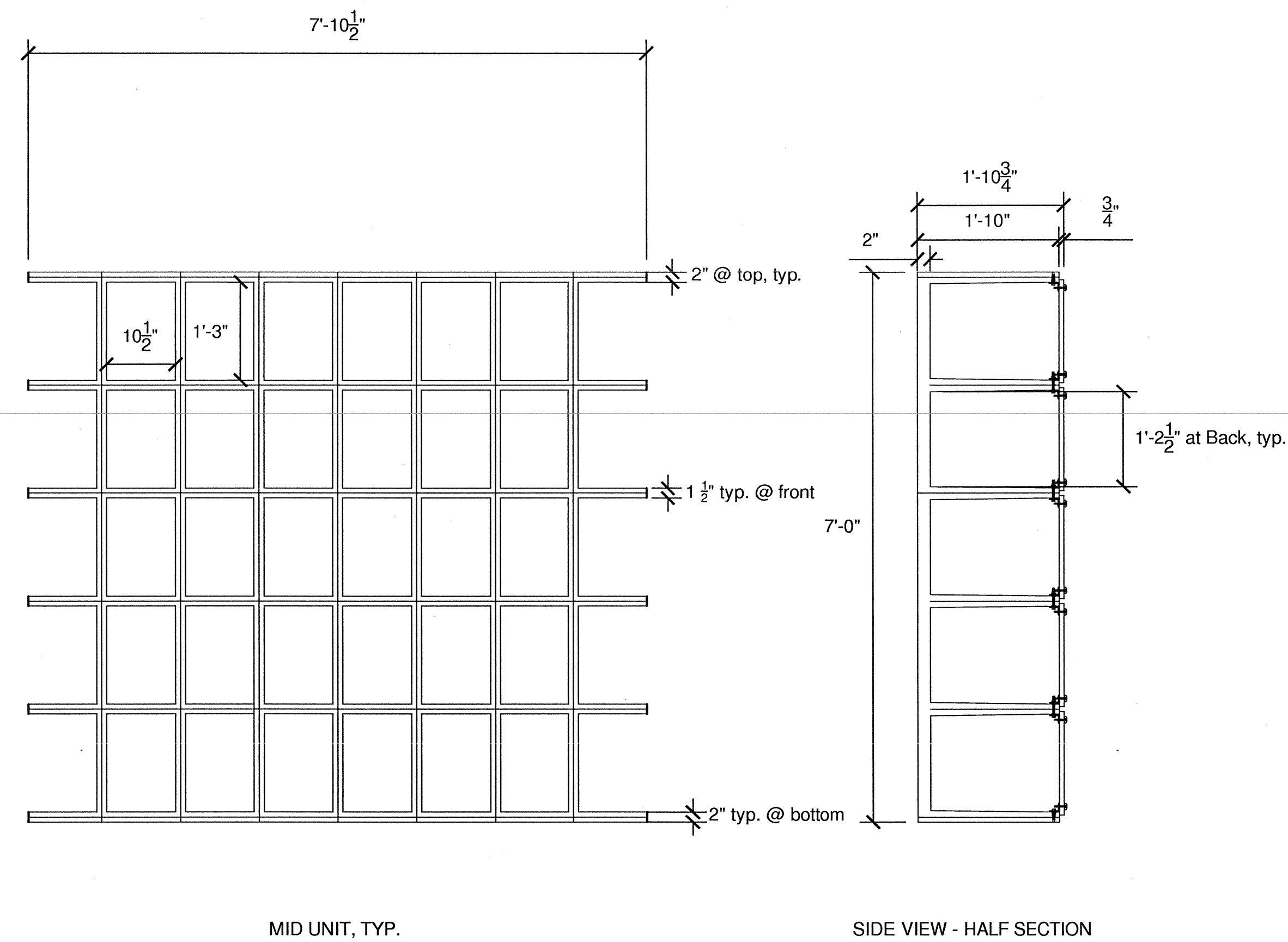
NOTE:
PROVIDE EXPANSION JOINTS AT A MINIMUM OF 20' O.C. OR PER PLANS.
PROVIDE CONTROL JOINTS AT A MINIMUM INTERVAL OF THE WIDTH OF THE WALK OR PER PLANS, WHICHEVER IS CLOSER.



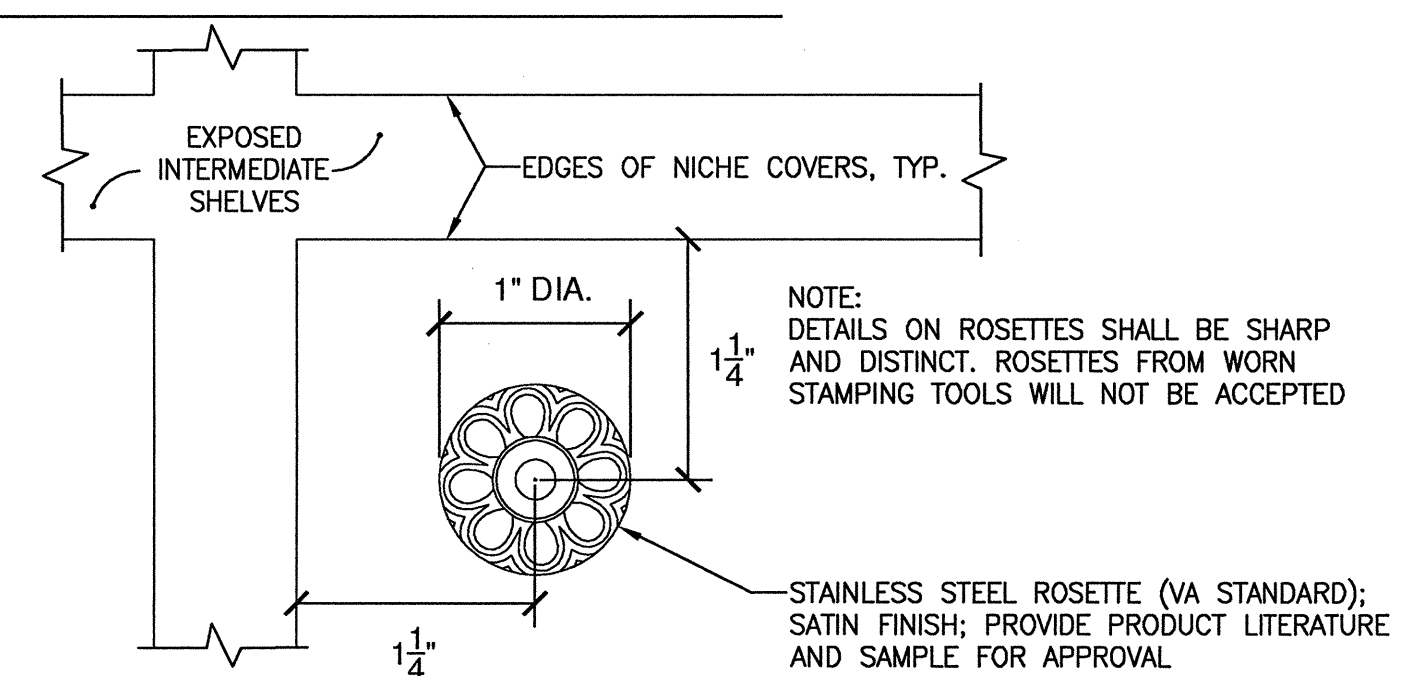
F1 CONCRETE PAVING AND JOINTS
NOT TO SCALE



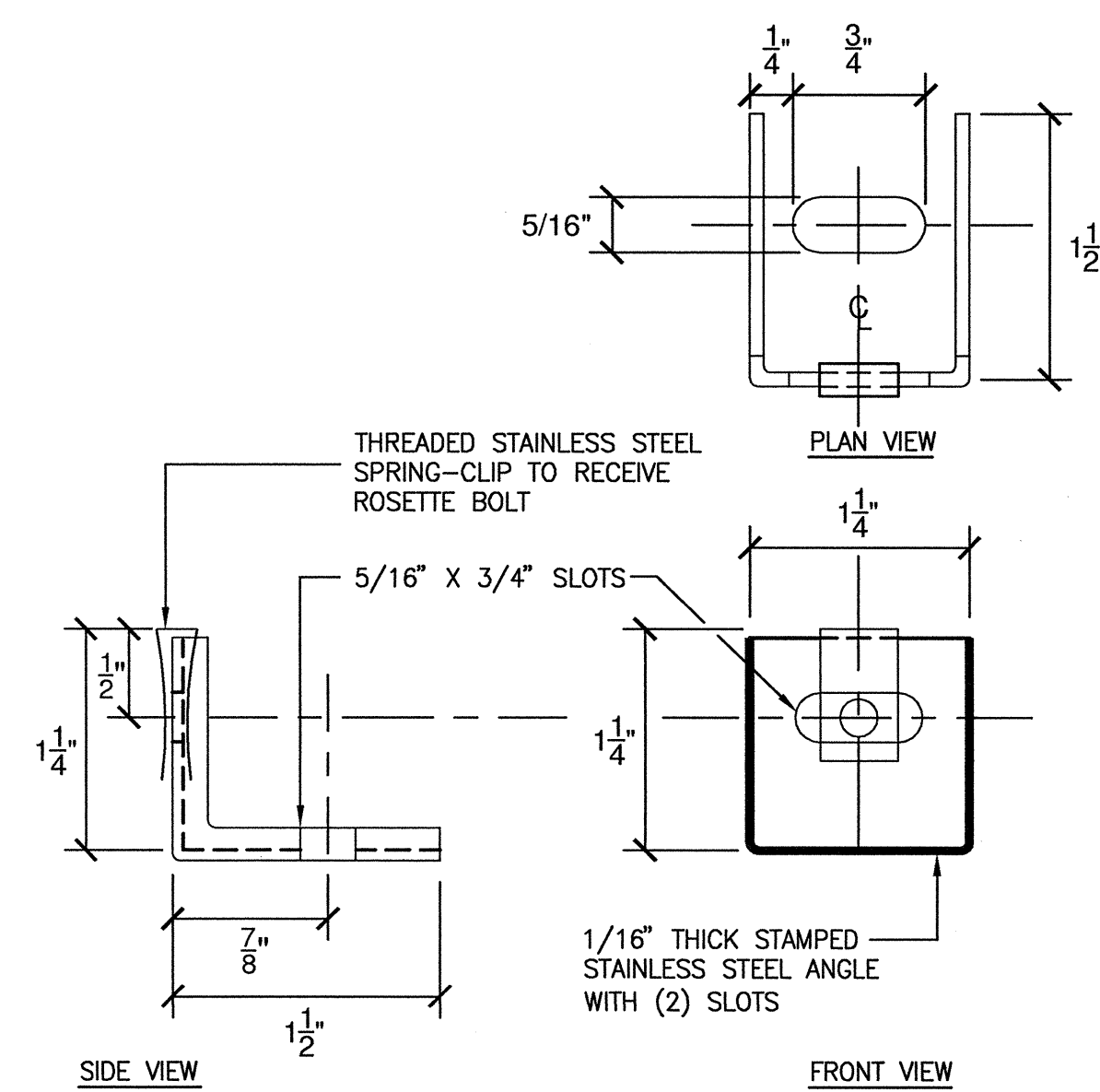
C4 PRECAST NICHE UNIT (5 UNITS H X 8 UNITS W)
3/4"=1'-0"



F4 COLUMBARIUM NICHE COVER ATTACHMENT
FULL SIZE

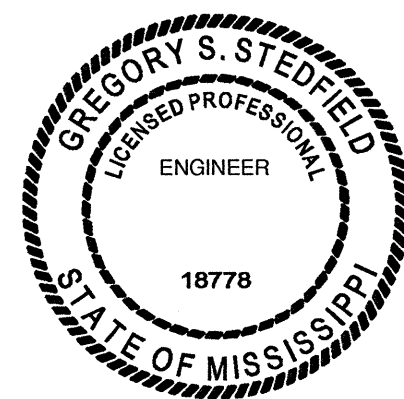


D8 COLUMBARIUM ROSETTES (4 Per Niche Cover)
FULL SIZE



F8 MOUNTING BRACKET (4 Per Niche)
FULL SIZE

Revisions	Date



Carter-Burgess
A Wholly Owned Subsidiary of Jacobs
Consultants in Architecture, Engineering,
Planning, and the Environment
Sacramento Office
180 Promenade Circle, Suite 300
Sacramento, California 95834
(916) 929-3323 Fax (916) 929-1772

Subconsultant List	
BUEHLER & BUEHLER ASSOCIATES	600 Q STREET, STE. 200, SACRAMENTO, CA. 95814 (916) 443-0303
THE SIERRA WEST GROUP, LLC	2730 GATEWAY OAKS DRIVE, STE. 110 SACRAMENTO, CA. 95833 (916) 925-4000



NATIONAL
CEMETERY
ADMINISTRATION

Drawing Title		Project Title		Date:
COLUMBARIUM DETAILS		BILOXI NATIONAL CEMETERY 1,700 COLUMBARIUM NICHES		December 30, 2008
Approved: Director, Office of Construction Management		Building Number	Checked JAT	Drawn WMR/CJF
Approved: Director, Project Management Service		Location	BILOXI NATIONAL CEMETERY BILOXI, MISSISSIPPI	
Project No. 832-CM3-027				DRAWING NO. L-501
				Dwg. 12 of 18