

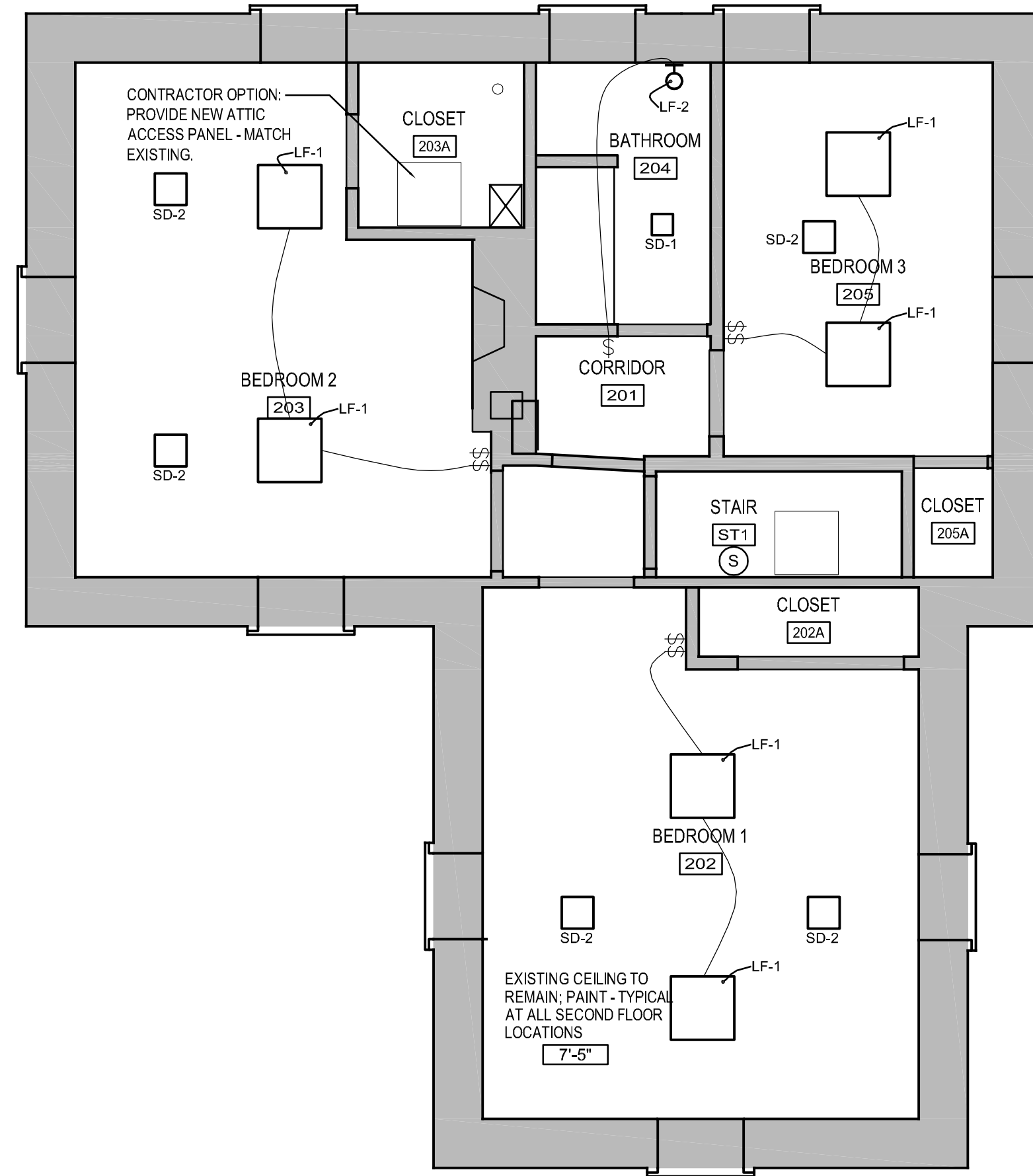
1 FIRST FLOOR REFLECTED CEILING PLAN
A-6 Scale: 1/4" = 1'-0"

GENERAL REFLECTED CEILING PLAN NOTES

- ALL SUSPENDED ACOUSTIC TILE CEILINGS LOCATED ON FIRST FLOOR ARE TO BE REMOVED; COORDINATE WITH DRAWING D-1. REPLACE ACOUSTIC TILE CEILINGS WITH SMOOTH FINISH SUSPENDED GYPSUM WALLBOARD CEILINGS AT ELEVATIONS SHOWN ON DRAWINGS. WORK OF SS 0929 00. PAINT. SS 09 91 00. ALL HVAC IS WORK OF BASE BID. LIGHTING AND NEW CEILING IN ROOM 101 IS WORK OF BASE BID. NEW CEILINGS, LIGHTING, AND SMOKE DETECTOR SHOWN IN ROOMS 102, 103, & 104 IS WORK OF BID ALTERNATE ONE.
- EXISTING PLASTER CEILINGS LOCATED ON SECOND FLOOR SHALL REMAIN. CUT AND PATCH CEILINGS AS REQUIRED TO COMPLETE INSTALLATION OF NEW HVAC, LIGHTING, AND SMOKE DETECTOR. PROVIDE NEW PAINT FINISH ON ALL CEILINGS (SS 09 91 00). HVAC & PAINT IS WORK OF BASE BID. LIGHTING AND SMOKE DETECTOR IS WORK OF BID ALTERNATE ONE.
- ALL BIDDERS ATTENTION SHALL BE DIRECTED TO LIMITED ATTIC SPACE AVAILABLE FOR INSTALLATION OF NEW HVAC DUCT. IF NECESSARY, CEILINGS SHALL BE CUT AND PATCHED IN ORDER TO COMPLETE INSTALLATION OF NEW DUCTWORK. BIDDERS SHALL INCLUDE ALL COSTS NECESSARY TO COMPLETE INSTALLATION OF THE NEW HVAC DUCT LOCATED IN ATTIC; NO ADDITIONAL COMPENSATION WILL BE CONSIDERED FOR FAILURE TO REVIEW EXISTING CONDITIONS.

REFLECTED CEILING TAG NOTES

- J** EXISTING ELECTRICAL JUNCTION BOX LOCATED ABOVE CEILING; RELOCATE BOX IMMEDIATELY BELOW NEW CEILING WITH BLANK COVER PLATE TO MATCH EXISTING EXPOSED DEVICE COVER PLATE COLOR AND STYLE. REWIRE AS NECESSARY.
- S** NEW HARD WIRED SMOKE DETECTOR. CONNECT TO NEAREST AVAILABLE CIRCUIT.
- SD-# SUPPLY AIR DIFFUSER; REFER TO MECHANICAL DRAWINGS
- LF-# LIGHT FIXTURE; REFER TO SCHEDULE THIS SHEET



2 SECOND FLOOR REFLECTED CEILING PLAN
A-6 Scale: 1/4" = 1'-0"

LIGHT FIXTURE SCHEDULE

NOTE: NEW LIGHTING FOR PORCH 100 & RECEPTION 101 IS WORK OF BASE BID. ALL OTHER NEW LIGHT IS WORK OF BID ALTERNATE NUMBER ONE.				
TYPE	DESCRIPTION	LAMPS	CATALOG NUMBER	COMMENTS
LF-1	2X2 SURFACE MOUNT FLOURESCENT WITH THE FOLLOWING FEATURES: <ul style="list-style-type: none">• 50.5% EFFICIENCY• 3/4" FLOATING FRAME• 2 5/16" DEEP (EXCLUDING LAMP SHIELDS)• SOFT WHITE FILM ON INSIDE OF MESH TO CONCEAL LAMP IMAGE & PROVIDE BALANCE BETWEEN REFLECTED LIGHT AND DIRECT LIGHT• SWING DOWN MICROPERFORATED LAMP SHIELD FOR EASY RELAMPING• 95% REFLECTIVE WHITE PAINT FINISH• SPECULAR INTERIOR REFLECTOR• ONE PIECE BODY• WHITE PAINT FINISH	(2) TTS	LIGHTOLIER QVB2SPGOSFT120SB LITHONIA EQUAL WILLIAMS EQUAL	AT FIRST FLOOR LOCATIONS REMOVE EXISTING FIXTURES AND WIRE NEW FIXTURES TO EXISTING WALL SWITCHES. PROVIDE NEW WIRING AS NECESSARY. AT SECOND FLOOR LOCATIONS THERE ARE CURRENTLY NO EXISTING CEILING MOUNT FIXTURES. PROVIDE NEW CONDUIT, WIRING & ALL OTHER MATERIAL/LABOR REQUIRED FOR COMPLETE INSTALLATION. CONNECT TO NEAREST AVAILABLE CIRCUIT. PROVIDE NEW DOUBLE TOGGLE SWITCH WHERE THERE IS CURRENTLY ONLY A SINGLE SWITCH.
LF-2	SURFACE MOUNT BATHROOM FIXTURE WITH THE FOLLOWING FEATURES: <ul style="list-style-type: none">• OVERALL WIDTH = 7"• OVERALL HEIGHT = 10"• PROJECTION = 8"• WALL CANOPY = 4.5"• BURNISHED ANTIQUE FINISH• 7" OPAL GLASS SHADE• MAXIMUM WATT - 100• INSTALL DOWN• UL APPROVED FOR DAMP LOCATION	SCREW-IN CF	REJUVENATION A3620 ADVENT EQUAL VISA EQUAL LIGHTOLIER EQUAL	REMOVE EXISTING FIXTURE AND WIRE TO EXISTING WALL SWITCH. PROVIDE NEW WIRING AS NECESSARY
LF-3	PENDANT MOUNT LIGHT FIXTURE WITH THE FOLLOWING FEATURES: <ul style="list-style-type: none">• OVERALL DIAMETER = 9"• OVERALL LENGTH = 15.25"• VICTORIAN BRONZE BODY FINISH• TRANSLUCENT SANDBLASTED GLASS• MAXIMUM WATT - 100	SCREW-IN CF	LIGHTOLOGY REEF 9 SUSP 0805 ADVENT EQUAL VISA EQUAL LIGHTOLIER EQUAL	REMOVE EXISTING FIXTURE AND ALL ASSOCIATED WIRING AND CONDUIT. PROVIDE NEW CONDUIT, WIRING AND SWITCH AS SHOWN ON DRAWINGS. CONNECT TO EXISTING CIRCUIT.

100% BID DOCUMENTS	4/07/11
95% DESIGN DOCUMENTS	1/11/11
90% DESIGN DOCUMENTS	11/22/10
50% DESIGN DOCUMENTS	10/08/10
Revisions	Date

CONSULTANTS:

Tate•Hill•Jacobs Architects
346 East Main Street • Lexington • Kentucky • 40507
Telephone 859 • 252 • 5994 Facsimile 859 • 253 • 1607



ARCHITECT/ENGINEERS:

SMITHGROUP
architecture engineering interiors planning
SMITHGROUP, INC.
500 GRISWOLD
SUITE 1700
DETROIT, MICHIGAN 48226
T 313.983.3600
F 313.983.3636
www.smithgroup.com



NATIONAL CEMETERY ADMINISTRATION

Drawing Title

REFLECTED CEILING & LIGHTING PLANS

Approved Project Director

100% BID DOCUMENTS

Project Title Renovate Meigs Lodge Building Lebanon National Cemetery		Project Number	
Location Marion County, Kentucky		Building Number	
Date APRIL 7, 2011	Checked MJ	Drawn JES	Drawing Number A-6 Dwg. 8 of 12