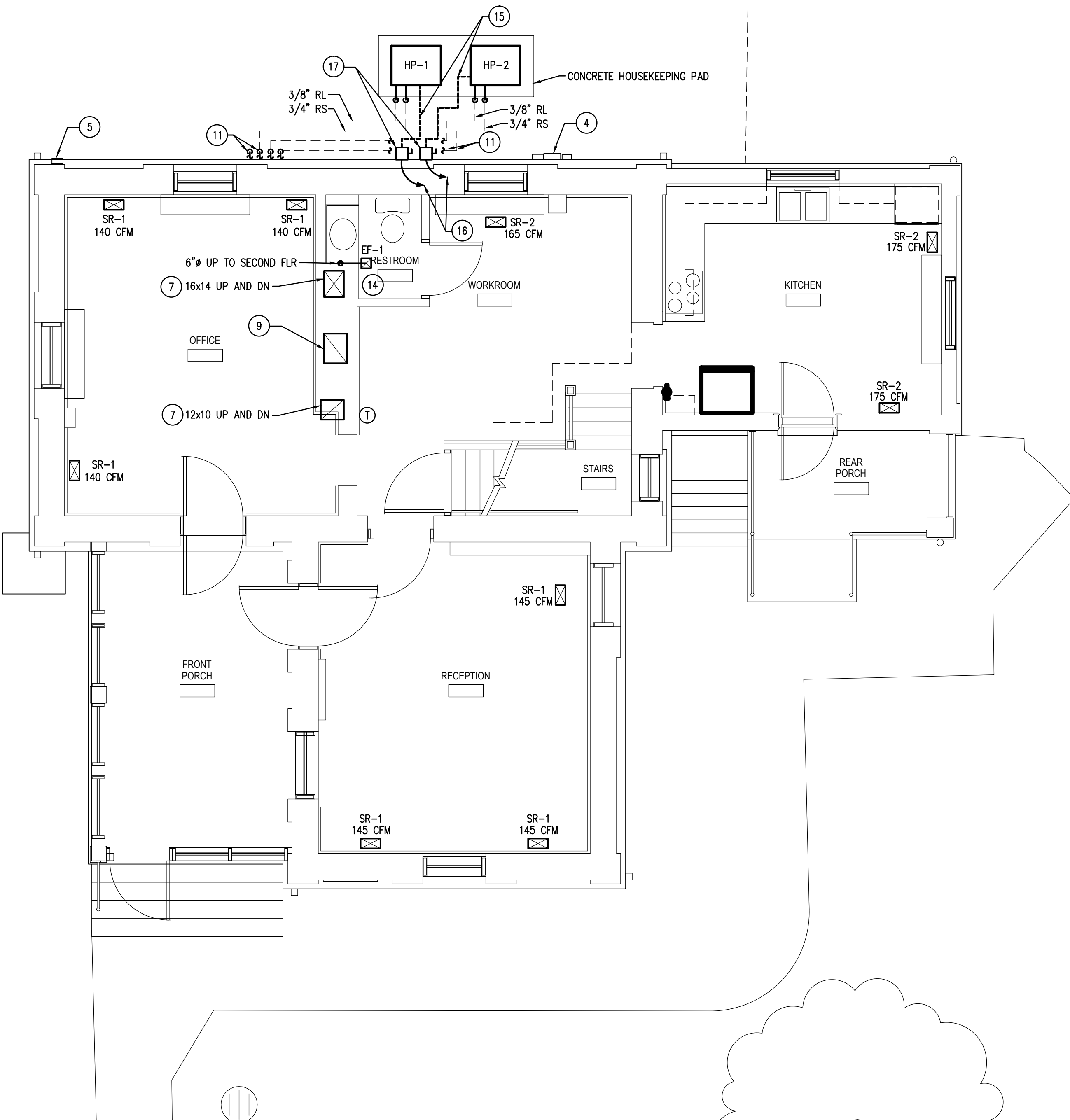


1 MECH. & ELEC. BASEMENT FLOOR PLAN
Scale: 1/4" = 1'-0"

KEY NOTES

- EXISTING TO REMAIN PHONE & DATA
- REMOVE EXISTING ELECTRICAL PANELBOARDS. PROVIDE NEW PANELBOARD AND RECONNECT EXISTING CIRCUITS TO NEW PANELBOARD. (REFER TO ONE-LINE DIAGRAM AND PANEL SCHEDULES).
- EXISTING BOILER AND ALL ASSOCIATED PIPING AND EQUIPMENT TO REMAIN.
- EXISTING ELEC. METERS TO REMAIN
- EXISTING WATER METER TO REMAIN
- EXISTING PIPING TO REMAIN
- SUPPLY AND RETURN DUCT IN NEW WALL ENCLOSURE UP TO SECOND FLOOR. SEE ARCHITECTURAL DRAWINGS FOR FLOOR OPENINGS AND WALL CONSTRUCTION AROUND DUCT.
- SUPPLY REGISTER BOOT. EXTEND TO FLOOR REGISTER.
- 20x12 FLOOR RETURN GRILLE IN FIREPLACE FLOOR.
- 3/8" REFRIGERANT LIQUID AND 3/4" REFRIGERANT SUCTION PIPING OUT TO HEAT PUMPS. COORDINATE PIPE PENETRATIONS THROUGH BASEMENT WALL WITH ARCHITECTURAL TRADES.
- ROUTE REFRIGERANT PIPING TIGHT ALONG WALL AT WALL PENETRATION. EXTEND DIRECTLY FROM WALL TO EACH RESPECTIVE HEAT PUMP. HEAT PUMPS TO BE MAXIMUM 4'-0" AND MINIMUM 3'-0" FROM BUILDING. COORDINATE HEAT PUMP PLACEMENT WITH CONCRETE BASE.
- EXISTING WATER HEATER AND ALL ASSOCIATED PIPING TO REMAIN.
- ROUTE 3/4" CONDENSATE DRAIN PIPING FROM AC-1&2 TO NEAREST EXISTING FLOOR DRAIN. VERIFY LOCATION OF FLOOR DRAIN IN FIELD.
- CONNECT NEW EXHAUST FAN EF-1 TO EXISTING SWITCHED 120V LIGHTING CIRCUIT IN BATHROOM. LOCATE BATHROOM EXHAUST FAN TO ALLOW EXHAUST DUCT TO BE INSTALLED ABOVE CEILING IN JOIST SPACE OR WITHIN WALL CONSTRUCTION.
- 1/2" LIQUIDTIGHT NONMETALLIC CONDUIT (LFNC), 3#12 (THHN/THWN). LFNC LENGTH SHALL NOT EXCEED 6'.
- PROVIDE DEDICATED 240V BRANCH CIRCUIT FOR NEW HEAT PUMP. PROVIDE HOME RUN TO NEW PANELBOARD IN 1/2" EMT CONDUIT WITH 3#12 THHN/THWN.
- WEATHERPROOF (NEMA 3R) 30A, 240V NON-FUSED DISCONNECT SWITCH. MOUNT ON BRICK SECTION OF EXTERIOR WALL.
- NEMA 1, 30A, 240V NON-FUSED DISCONNECT SWITCH FOR NEW AC UNITS. MOUNT ON AC UNIT. COMPLY WITH NEC 110 WORKING SPACE REQUIREMENTS.
- PROVIDE DEDICATED 240V BRANCH CIRCUIT FOR NEW AC UNIT. PROVIDE HOME RUN TO NEW PANELBOARD IN 1/2" EMT CONDUIT WITH 3#14 THHN/THWN.
- RELOCATE DOMESTIC COLD WATER LINE UP TO CEILING. COORDINATE LOCATION WITH NEW ELECTRICAL PANEL TO ASSURE CODE COMPLIANT INSTALLATION.



2 MECH. & ELEC. FIRST FLOOR PLAN
Scale: 1/4" = 1'-0"

SHEET NOTES

AS PART OF THE COORDINATION DRAWING PROCESS PLACE A TEMPORARY TAPED OUTLINE OF GRILLES, REGISTERS AND DIFFUSERS ON THE FINISH SURFACES FOR OWNER APPROVAL PRIOR TO CUTTING ANY OPENINGS. OPENINGS SHALL BE CLEANLY CUT TO ALLOW INSTALLATION OF THE GRILLES, REGISTERS AND DIFFUSERS. PATCH AND REPAIR ANY DAMAGES OUTSIDE OF OPENING TO MATCH FINISHES. DIFFUSERS LOCATIONS SHOWN ON DRAWINGS ARE APPROXIMATE. SHIFT LOCATIONS AS NECESSARY TO ALIGN BETWEEN FLOOR AND CEILING JOISTS AND WALL STUDS. WHERE THE DIFFUSERS MUST BE SHIFTED OR ROTATED TO COORDINATE WITH THE BUILDING STRUCTURE OR WHERE EXISTING SYSTEMS (ELECTRICAL, HEATING, ETC.) CONFLICT WITH THE LOCATIONS, NOTIFY THE ARCHITECT FOR REVIEW AND ADDITIONAL DIRECTION.

RELOCATE RECEPTACLES, SWITCHES AND DATA OUTLETS TO THE NEW WALL LOCATIONS. SEE SHEET A-1 FOR LOCATIONS AND AFFECTED OUTLETS.

PROVIDE NEW LIGHT FIXTURES. SEE ARCHITECTURAL DRAWINGS FOR LOCATIONS AND FIXTURE TYPES. REMOVE EXPOSED CONDUIT. REMOVE WIRING FROM EXISTING FIXTURES BEING REMOVE BACK TO THE LIGHT SWITCH. PROVIDE NEW POWER WIRING FROM THE LIGHT SWITCH TO THE FIXTURE. ELIMINATE JUNCTION BOXES BETWEEN THE LIGHT SWITCH AND THE FIXTURE THAT ARE NO LONGER REQUIRED. FIELD VERIFY EXTEND OF CONDUIT TO REMOVE AND REPLACE PRIOR TO BID.

100% BID DOCUMENTS

100% BID DOCUMENTS	04/07/11
Revisions	Date

CONSULTANTS:

Tate•Hill•Jacobs: Architects
346 East Main Street•Lexington•Kentucky•40507
Telephone 859•252•5994 Facsimile 859•253•1607

ARCHITECT/ENGINEERS:

SMITHGROUP
architecture engineering interiors planning
SMITHGROUP, INC.
500 GRISWOLD
SUITE 1700
DETROIT, MICHIGAN 48226
T 313.983.3600
F 313.983.3636
www.smithgroup.com



NATIONAL
CEMETERY
ADMINISTRATION

Drawing Title

MECH. & ELEC. FLOOR PLANS, DETAILS

Approved Project Director

Project Title

Renovate Meigs Lodge Building
Lebanon National Cemetery

Location

Marion County, Kentucky

Date

APRIL 7, 2011

Checked

MJ

Drawn

JES

Project Number

Building Number

Drawing Number

ME-1

Dwg. 8 of 11