

ADDENDUM NO. 1

DATED MARCH 08, 2012

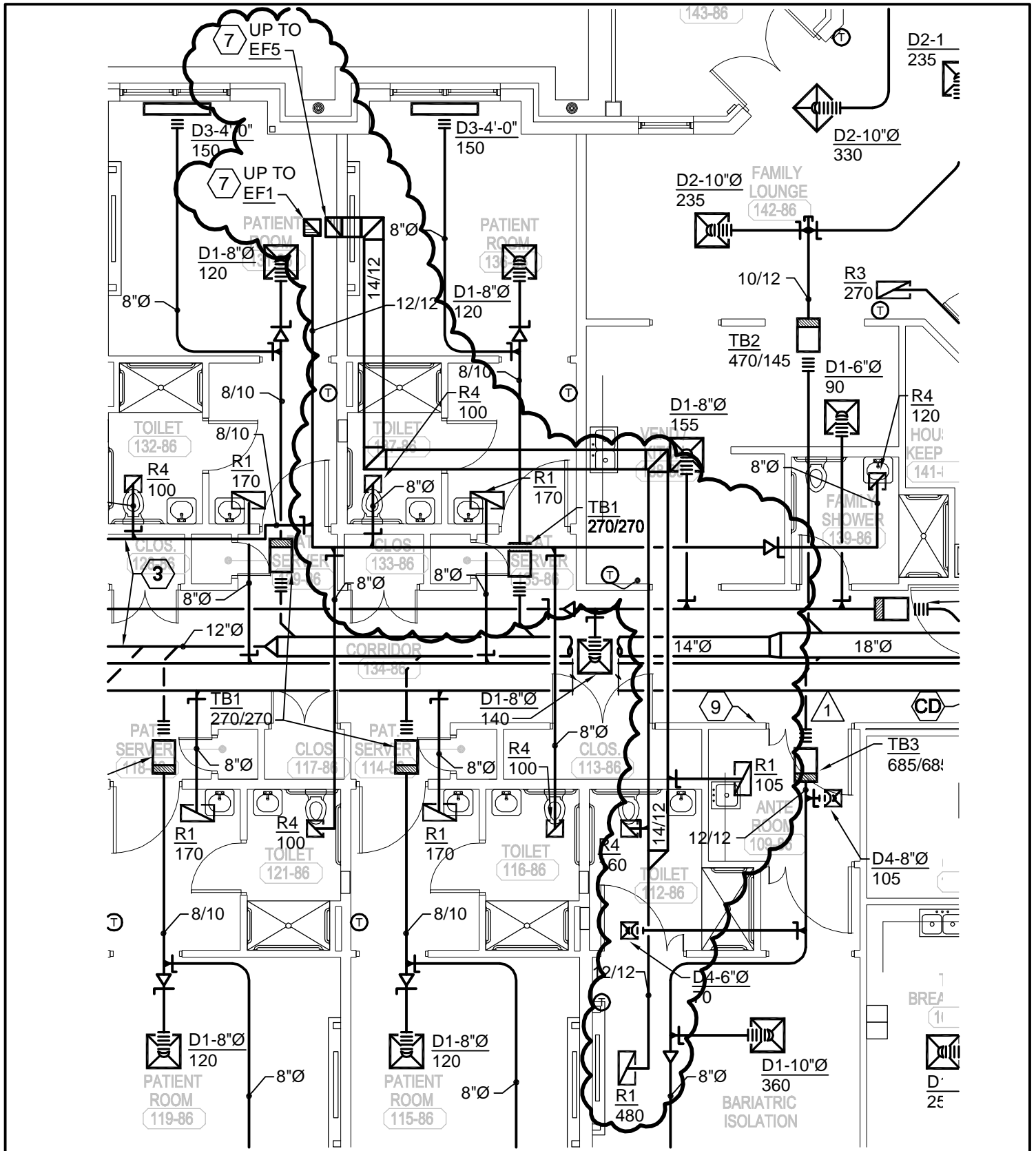
VA HOSPICE CARE UNIT
CARL VINSON VA MEDICAL CENTER
DEPARTMENT OF VETERANS AFFAIRS
1826 VETERANS BOULEVARD
DUBLIN, GEORGIA 31021

This addendum is a modification of the Contract Documents for work at the VA Hospice Care Unit – Carl Vinson VA Medical Center, 1826 Veterans Boulevard, Dublin, Georgia 31021 and is hereby incorporated into and becomes part of said documents. It is to be considered in the proposals and covers additions or changes as follows:

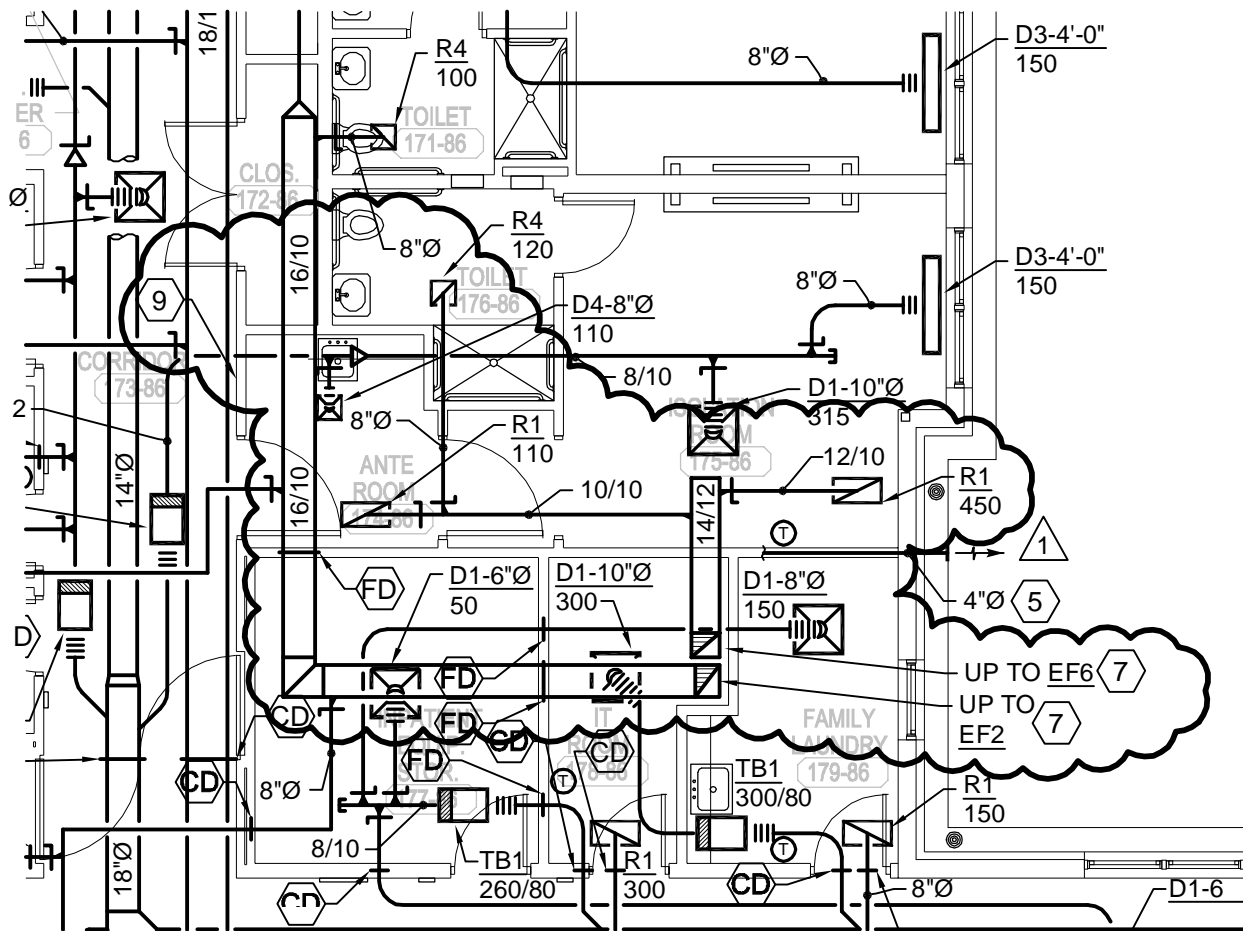
DRAWINGS


- ITEM 1 SHEET H201 – HVAC PLAN
Add coded note 9 to read “INSTALL A VISUAL INDICATOR OF NEGATIVE PRESSURE, SIMILAR TO PRODUCT AS PRODUCED BY AIRFLOW DIRECTION INCORPORATED MODEL ADI-69-V-N. THIS UNIT DOES NOT REQUIRE ANY ELECTRICAL POWER AND PROVIDES INDICATION OF PRESSURIZATION OF 0.01” W.C. MINIMUM. INSTALL PER MANUFACTURER’S PUBLISHED INSTRUCTIONS AT AN ELEVATION OF 7’-2” (VERIFY WITH ARCHITECT BEFORE FINAL ROUGH IN) ABOVE FINISHED FLOOR IN THE WALL BETWEEN THE CORRIDOR AND THE ANTE ROOM.”
- ITEM 2 SHEET H201 – HVAC PLAN
Revise ductwork layout and add exhaust fans EF5 and EF6 as shown on attached sketches SKH-01 and SKH-02. Add visual indicator of negative pressure as indicated by coded note 9 for each isolation suite.
- ITEM 3 SHEET H401 – HVAC ENLARGED PLANS
Revise label on steam pipe after the pressure reducing station from HPS to LPS.
- ITEM 4 SHEET H501 – HVAC SCHEDULES
Revise FAN SCHEDULE as indicated in attached sketch SKH-03. Add two new fans EF5 and EF6 and modify EF1-EF3.
- ITEM 5 SHEET H601 – HVAC SYMBOLS AND DETAILS
Revise tag reference bubble on detail A for the heating coil piping from C/H601 to F/H601.
- ITEM 6 SHEET H601 – HVAC SYMBOLS AND DETAILS
Revise tag reference bubble on diagram E for the references to the safety relief valves from H/H601 to L/H602.
- ITEM 7 SHEET H602 – HVAC DETAILS
Revise tag reference bubble on detail G for makeup water from J/H602 to D/H603.
- ITEM 8 SHEET H602 – HVAC DETAILS
Add detail J as attached in sketch SKH-04.
- ITEM 9 SHEET H603 – HVAC DETAILS & SCHEMATICS
Revise detail D as attached in sketch SKH-05.

- ITEM 10 SHEET E301 – FIRST FLOOR POWER PLAN
Power Plan A: Receptacles on north wall of Lobby 102-86 shall be circuited with P1-12.
- ITEM 11 SHEET E302 – ATTIC POWER PLAN
Attic Plan: Add power to exhaust fan #5, 1/3 HP, 120V, single phase. Circuit to panel EP1-10 with #12 AWG conductors.
- ITEM 12 SHEET E302 – ATTIC POWER PLAN
Attic Plan: Add power to exhaust fan #6, 1/4 HP, 120V, single phase. Circuit to panel EP1-12 with #12 AWG conductors.
- ITEM 13 SHEET E302 – ATTIC POWER PLAN
Attic Plan: Revise tags as follows. EF1 is 1/4 HP in lieu of 1/2 shown, EF2 is 1/3 HP in lieu of 1/2 HP shown, and EF3 is 1/6 HP in lieu of 1/4 HP shown. Electrical requirements remain.
- ITEM 14 SHEET E502 – PANEL SCHEDULES
Panel EP1: Revise heat trace circuit breakers to GF, 30mA type. Add ten 20/1 spare circuit breakers in second tub of panel EP1.
- ITEM 15 SHEET E704 – ELECTRICAL DETAILS
Detail F: Add note to detail: "Provide separate control relay per lighting zone, one for general lighting and one for reading light." Revise tag to "Low voltage lighting control relay enclosure."
- ITEM 16 SHEET T101 – FIRST FLOOR TECHNOLOGY PLAN
Technology Plan A: Add fire alarm remote annunciator at Team Station adjacent to graphic annunciator panel.



		SHEET TITLE			SHEET NO.	
		HVAC PLAN			SKH-01	
DRAWN BY WPS		PROJECT		REF. DETAIL/SHEET		
		VA HOSPICE CARE UNIT			A/H201	
		CARL VINSON VA MEDICAL CENTER				
CHECKED BY WPS		1826 VETERANS BOULEVARD, DUBLIN, GEORGIA 31021				
Matrix Architects		PROJECT NO.	DATE	REVISION	SCALE	
		557-CSI-375	03/08/2012	ADDN. NO. 1	1/8"=1'-0"	
		© 2012 Matrix Architects Incorporated				



		SHEET TITLE			SHEET NO.	
		HVAC PLAN				
DRAWN BY WPS		CHECKED BY WPS		PROJECT		REF. DETAIL/SHEET
				VA HOSPICE CARE UNIT CARL VINSON VA MEDICAL CENTER 1826 VETERANS BOULEVARD, DUBLIN, GEORGIA 31021		
Matrix Architects		PROJECT NO.	DATE	REVISION	SCALE	
		557-CSI-375	03/08/2012	ADDN. NO. 1	1/8"=1'-0"	
© 2012 Matrix Architects Incorporated						

FAN SCHEDULE

- (1) FAN TO BE ON EMERGENCY POWER.
 (2) INCLUDE MEDIUM BELT LOSSES IN SELECTION FOR SUBMITTAL

KEY: CENT.-CENTRIFUGAL, PROP.-PROPELLER, F.C.-FORWARD CURVED, B.I.-BACKWARD INCLINED, A.F.-AIRFOIL, A.T.L.-ACROSS THE LINE, P.W.-PART WINDING, A.T.-AUTO TRANSFORMER

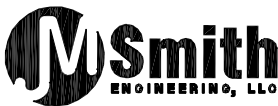
TAG	LOCATION	FUNCTION	FAN TYPE	UNIT DATA						MOTOR DATA				SOUND RATING IN SONES	INDICATED COMPONENTS PROVIDED BY		REMARKS
				WHEEL TYPE	TOTAL S.P. "W.G.	CFM	RPM	TYPE OF DRIVE	TYPE OF DAMPER	HP	RPM	VOLTS	PHASE		M.C.	F.C.	
EF1	ATTIC	RR EXHAUST	INLINE	CENT	0.75	620	1238	BELT	GRAVITY	1/4	1750	120	1	9.2	(A)	(D)	(1)(2)
EF2	ATTIC	RR EXHAUST	INLINE	CENT	0.75	780	1263	BELT	GRAVITY	1/3	1750	120	1	9.7	(A)	(D)	(1)(2)
EF3	ATTIC	RR EXHAUST	INLINE	CENT	0.50	90	1615	BELT	GRAVITY	1/6	1750	120	1	7.5	(B)	(D)	(1)(2)
EF4	ATTIC	ATTIC EXHAUST	INLINE	CENT	0.25	450	1300	DIRECT	GRAVITY	1/4	1750	120	1	4	(B)	(D)	(1)
EF5	ATTIC	ISOLATION EXHAUST	INLINE	CENT	0.75	745	1255	BELT	GRAVITY	1/3	1750	120	1	9.5	(A)	(D)	(1)(2)
EF6	ATTIC	ISOLATION EXHAUST	INLINE	CENT	0.75	680	1244	BELT	GRAVITY	1/4	1750	120	1	9.3	(A)	(D)	(1)(2)
RAF1	MECHANICAL ROOM	AH EXHAUST	HOUSED	CENT	1.50	2430	707	BELT	MOTORIZED	7.5	1725	208	3	-	(A)(G)	(D)	INTERLOCK WITH AHU1 (1)

CODED NOTES:
 (D) = DISCONNECT SWITCH
 (B) = CONTROL PANEL WITH INTEGRAL DISCONNECT SWITCH
 (E) = CONTROL PANEL

(C) = CONTROL PANEL
 (E) = LINE VOLTAGE STARTER
 (F) = TWO SPEED STARTERS

(G) = VARIABLE FREQUENCY DRIVE
 (H) = EMERGENCY POWER

(J) = PLUG-IN UNIT
 (K) = THERMOSTAT
 (L) = WALL SWITCH



DRAWN BY
WPS

CHECKED BY
WPS

Matrix Architects

SHEET TITLE

HVAC SCHEDULS

PROJECT

VA HOSPICE CARE UNIT
CARL VINSON VA MEDICAL CENTER
1826 VETERANS BOULEVARD, DUBLIN, GEORGIA 31021

PROJECT NO.

557-CSI-375

DATE

03/08/2012

REVISION

ADDN. NO. 1

© 2012 Matrix Architects Incorporated

SHEET NO.

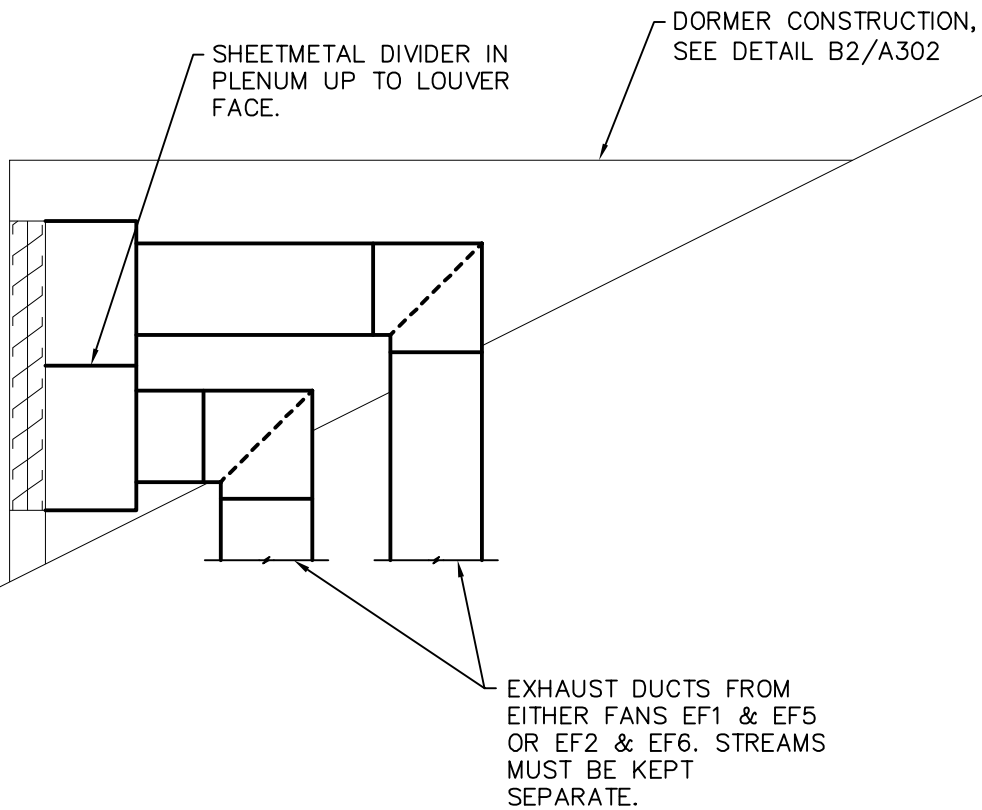
SKH-03

REF. DETAIL/SHEET

H501

SCALE

NONE



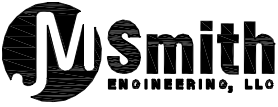
J

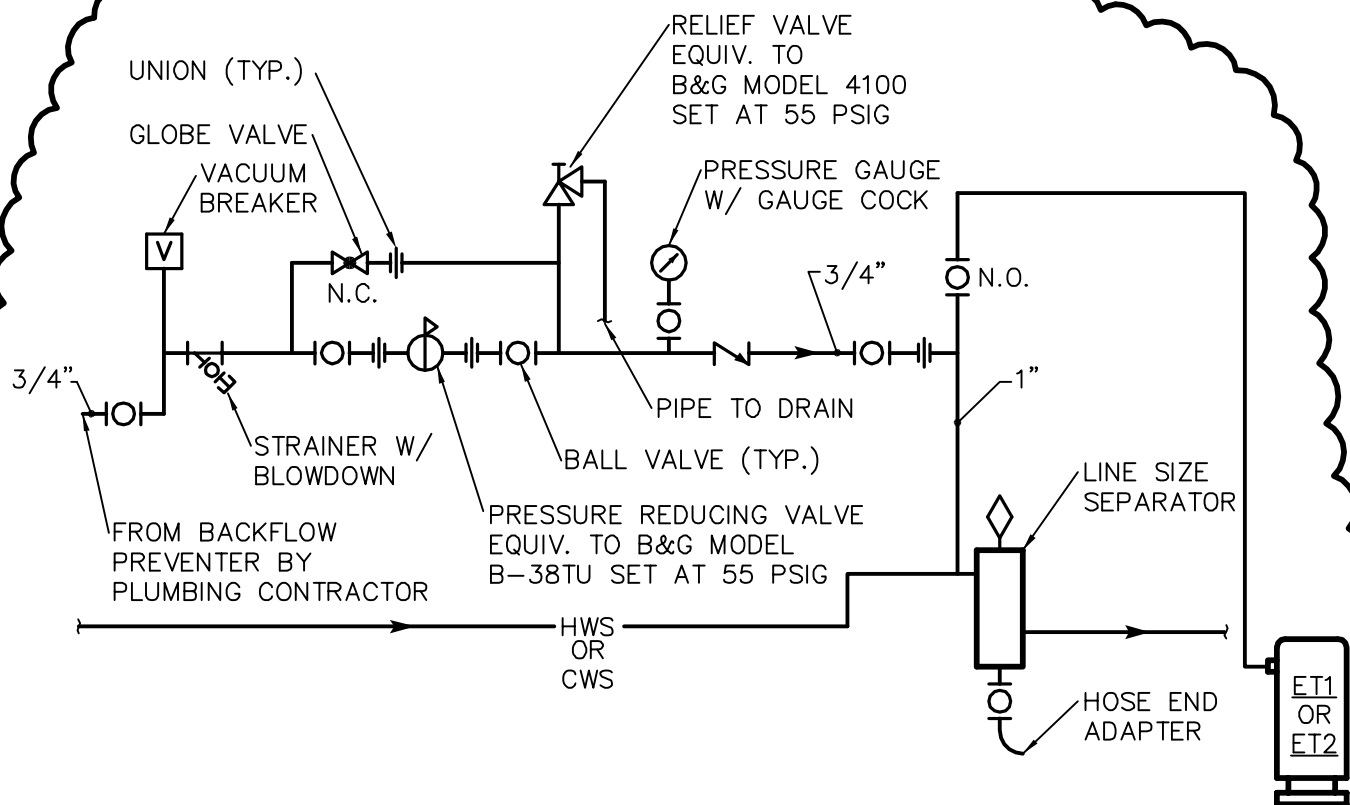
DETAIL

DORMER EXHAUST DETAIL

N.T.S.

1

		SHEET TITLE HVAC DETAILS		SHEET NO. SKH-04	
		PROJECT VA HOSPICE CARE UNIT CARL VINSON VA MEDICAL CENTER 1828 VETERANS BOULEVARD, DUBLIN, GEORGIA 31021		REF. DETAIL/SHEET J/H602	
DRAWN BY WPS	CHECKED BY WPS	PROJECT NO. 557-CSI-375	DATE 03/08/2012	REVISION ADDN. NO. 1	SCALE NONE
Matrix Architects		© 2012 Matrix Architects Incorporated			



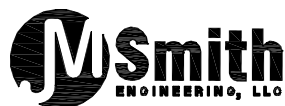
D

DETAIL

MAKE-UP WATER & EXPANSION TANK PIPING
(HOT AND CHILLED WATER SYSTEMS)

N.T.S.

1



DRAWN BY
WPS

CHECKED BY
WPS

Matrix Architects

SHEET TITLE

HVAC DETAILS & SCHEMATICS

PROJECT

VA HOSPICE CARE UNIT
CARL VINSON VA MEDICAL CENTER
1828 VETERANS BOULEVARD, DUBLIN, GEORGIA 31021

PROJECT NO.

557-CSI-375

DATE

03/08/2012

REVISION

ADDN. NO. 1

© 2012 Matrix Architects Incorporated

SHEET NO.

SKH-05

REF. DETAIL/SHEET

D/H603

SCALE

NONE