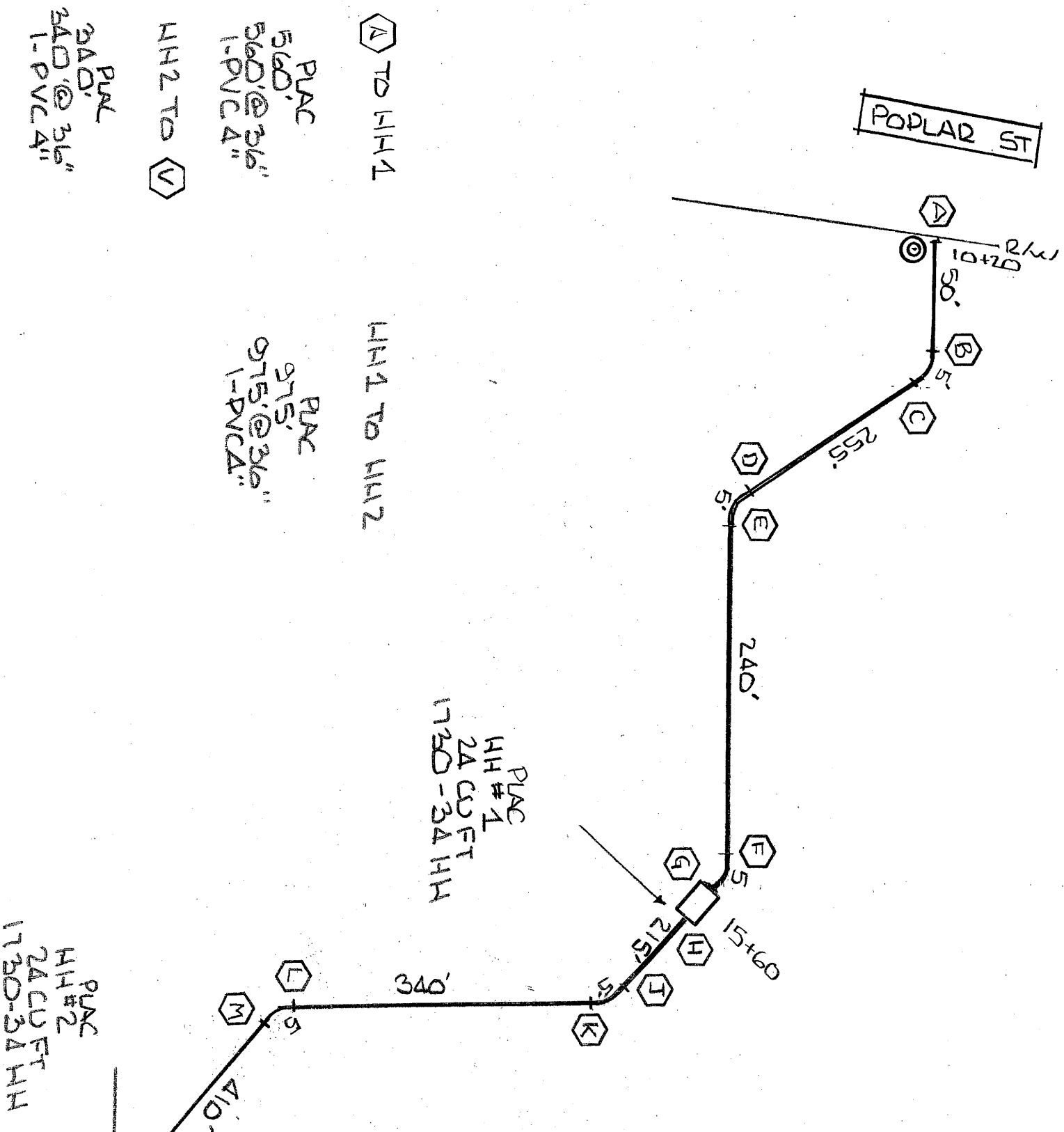


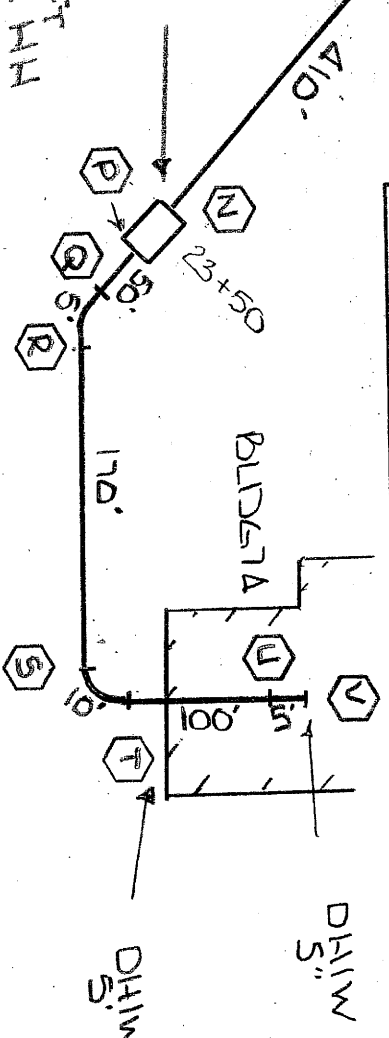
Reason for reissue: Issue: Date:

POPLAR ST

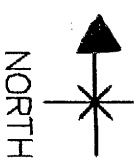


CONDUIT MATRIX Qwest

A-B	4C=PL-1-50'L 4" PVC-C
B-C	4C=PL-1-5'L 6'R 45° BEND 4" PVC-C
C-D	4C=PL-1-255'L 4" PVC-C
D-E	4C=PL-1-5'L 6'R 45° BEND 4" PVC-C
E-F	4C=PL-1-240'L 4" PVC-C
F-G	4C=PL-1-5'L 6'R 45° BEND 4" PVC-C
G-H	4C=PL-1-25'L 4" PVC-C
H-I	4C=PL-1-5'L 6'R 45° BEND 4" PVC-C
I-J	4C=PL-1-340'L 4" PVC-C
J-K	4C=PL-1-5'L 6'R 45° BEND 4" PVC-C
K-L	4C=PL-1-Δ 10'L 4" PVC-C
L-M	4C=PL-1-50'L 4" PVC-C
M-N	4C=PL-1-100'L 4" PVC-C
N-O	4C=PL-1-170'L 4" PVC-C
O-P	4C=PL-1-100'L 4" PVC-C
P-Q	4C=PL-1-100'L 4" PVC-C
Q-R	4C=PL-1-100'L 4" PVC-C
R-S	4C=PL-1-100'L 4" PVC-C
S-T	4C=PL-1-100'L 4" PVC-C
T-U	4C=PL-1-100'L 4" PVC-C
U-V	4C=PL-1-5'L 6'R 45° BEND 4" PVC-C

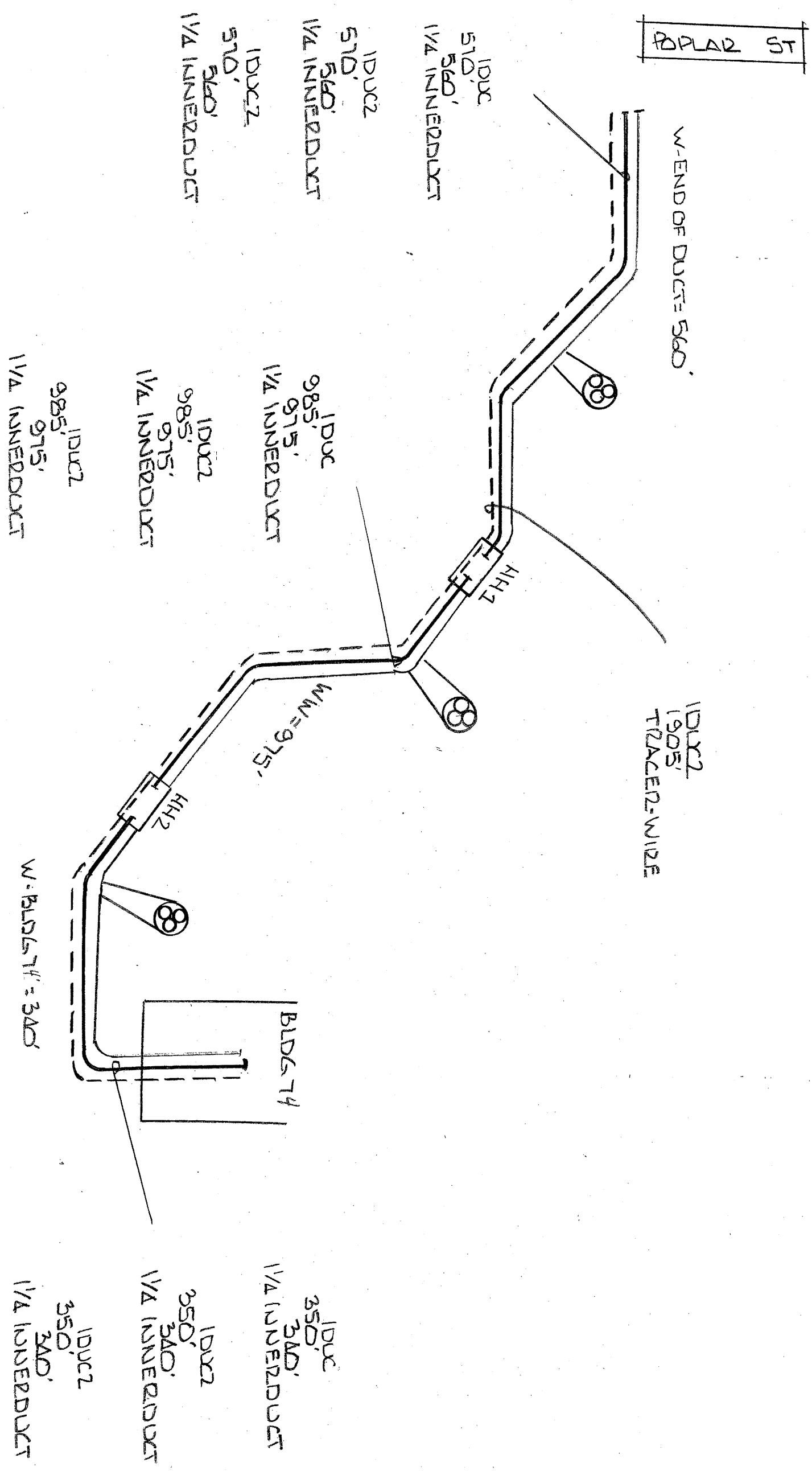


REMARKS:



DESIGNED BY: Dave Scholl
TELEPHONE: 509 529-0040
TAPER CODE:
PLAT REF:

JOB: GEO CODE: W59522
WC CLI: WLVWVAD1
ISS#: 1 ISS DATE: SH: OF



REMARKS:

Notice: Not for disclosure outside of Qwest and affiliates except under written agreement.

DESIGNED BY: Dave Scholl
TELEPHONE: 509 529-0040
TAPER CODE:
PLAT REF:

JOB:
GEO CODE: W59522
WC CLI: W/LW/AD1
ISS#: ISS DATE:

SH: OF

