

VA MEDICAL CENTER NORTH TEXAS
4500 S. LANCASTER ROAD
DALLAS, TEXAS 75216

PROJECT : 349-16-164
NTX REPLACE ATRIUM FLOORING
CLINICAL ADDITION FIRST FLOOR

CONTACT:
Bianca Cisneros
214-857-1065

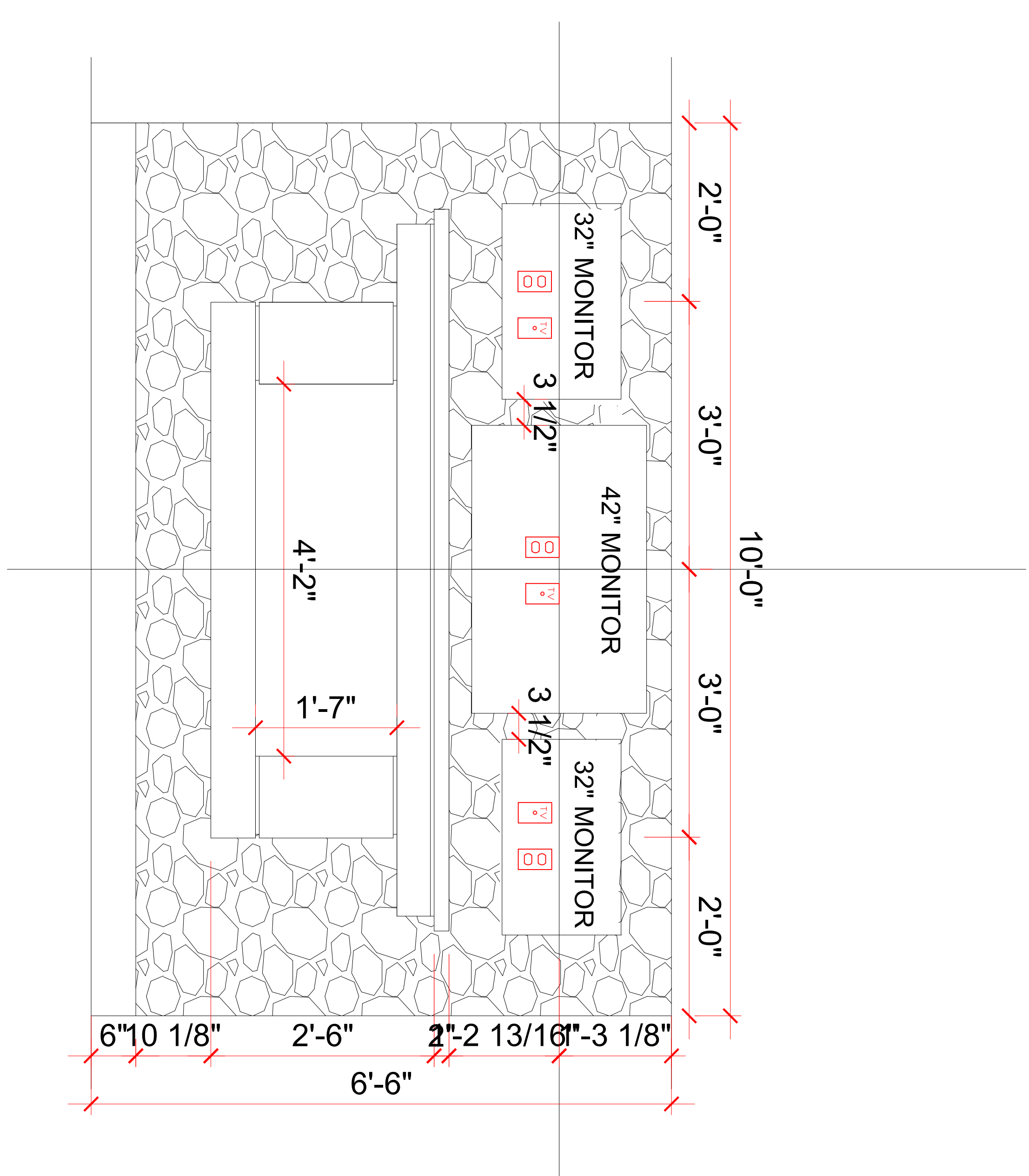
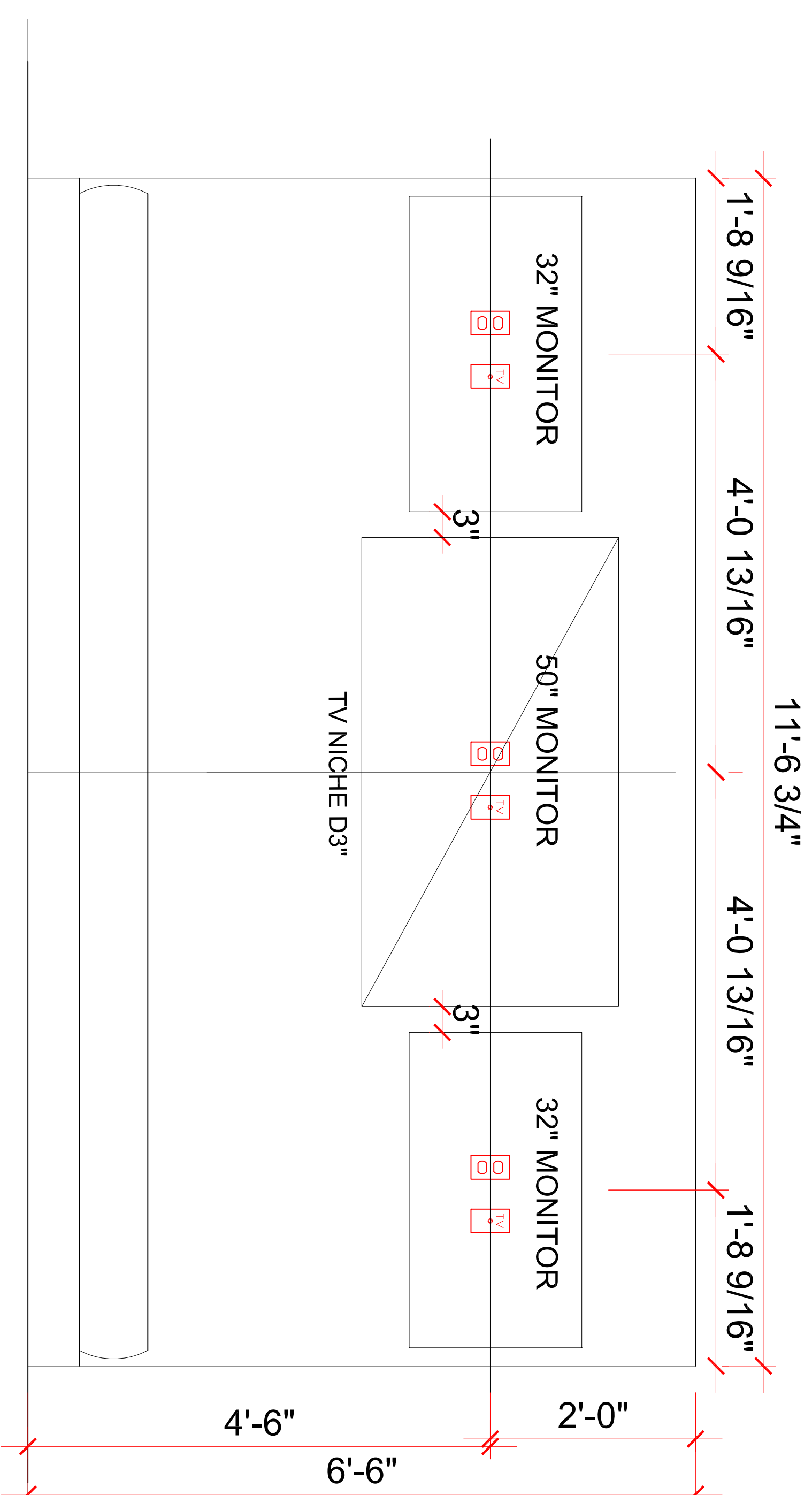
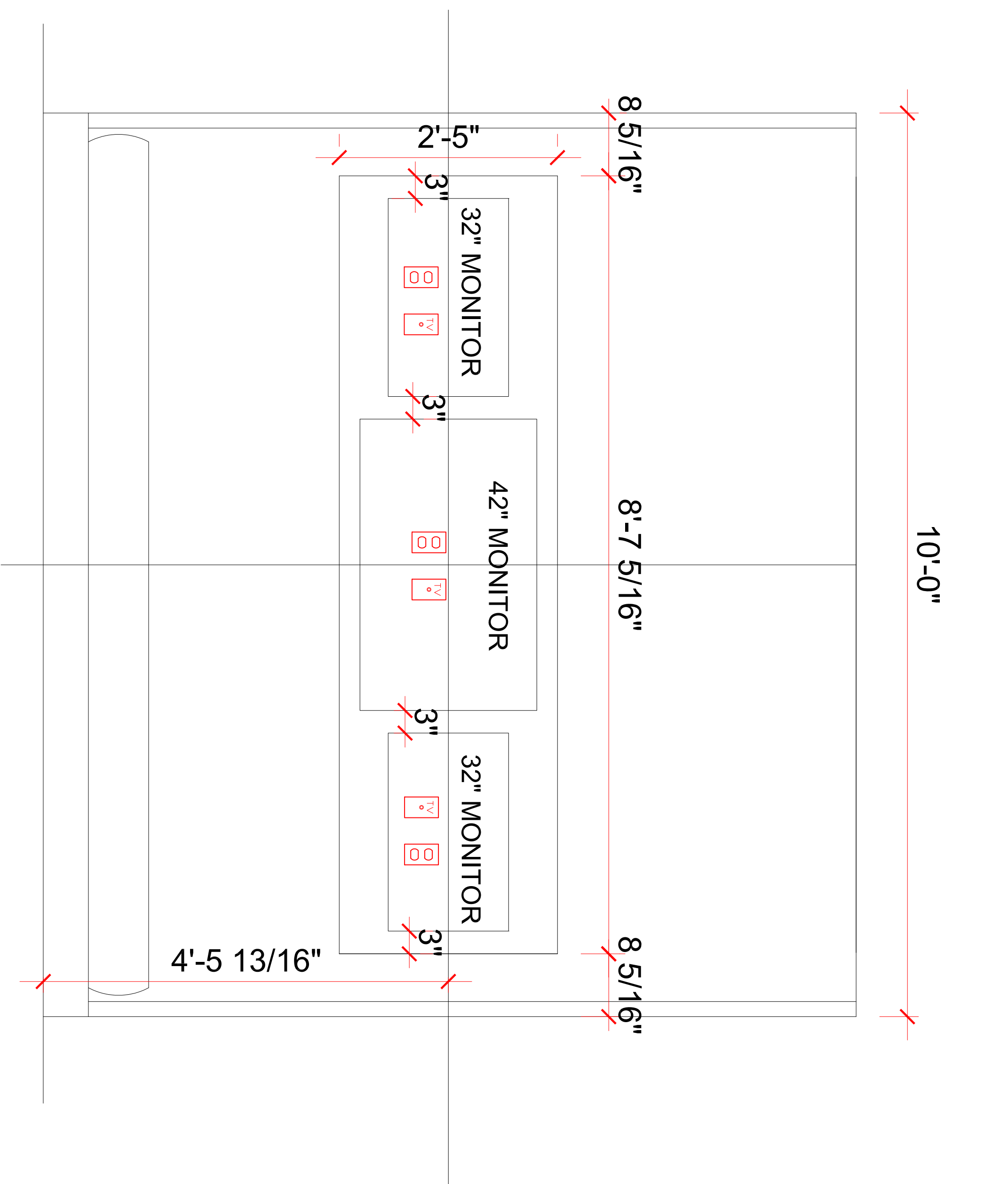
DATE:
April 28, 2016

DRAWING SCALE:
1/8" = 1'-0"
ENLARGED 3/8" = 1'-0"

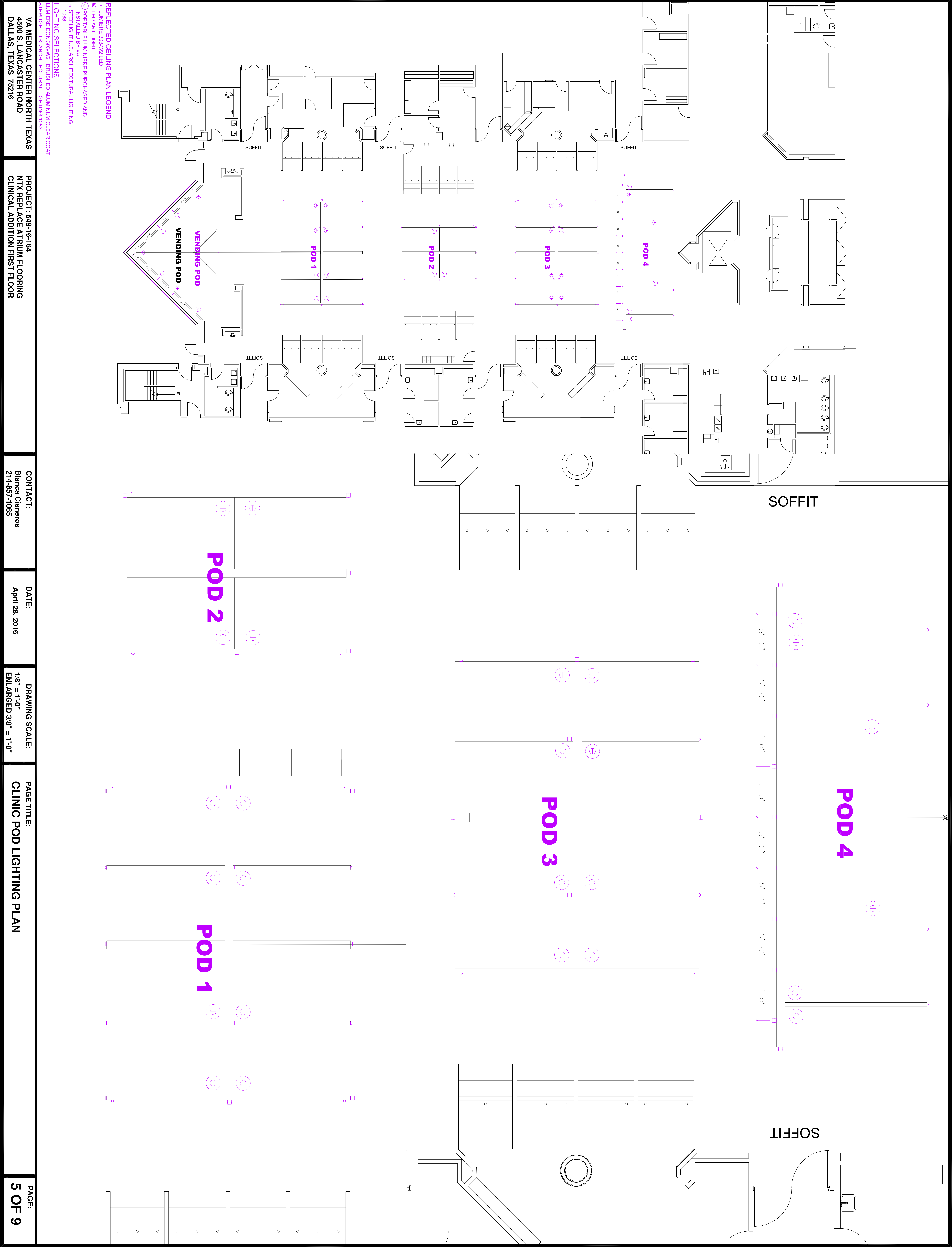
PAGE TITLE:
CLINIC POD POWER AND DATA

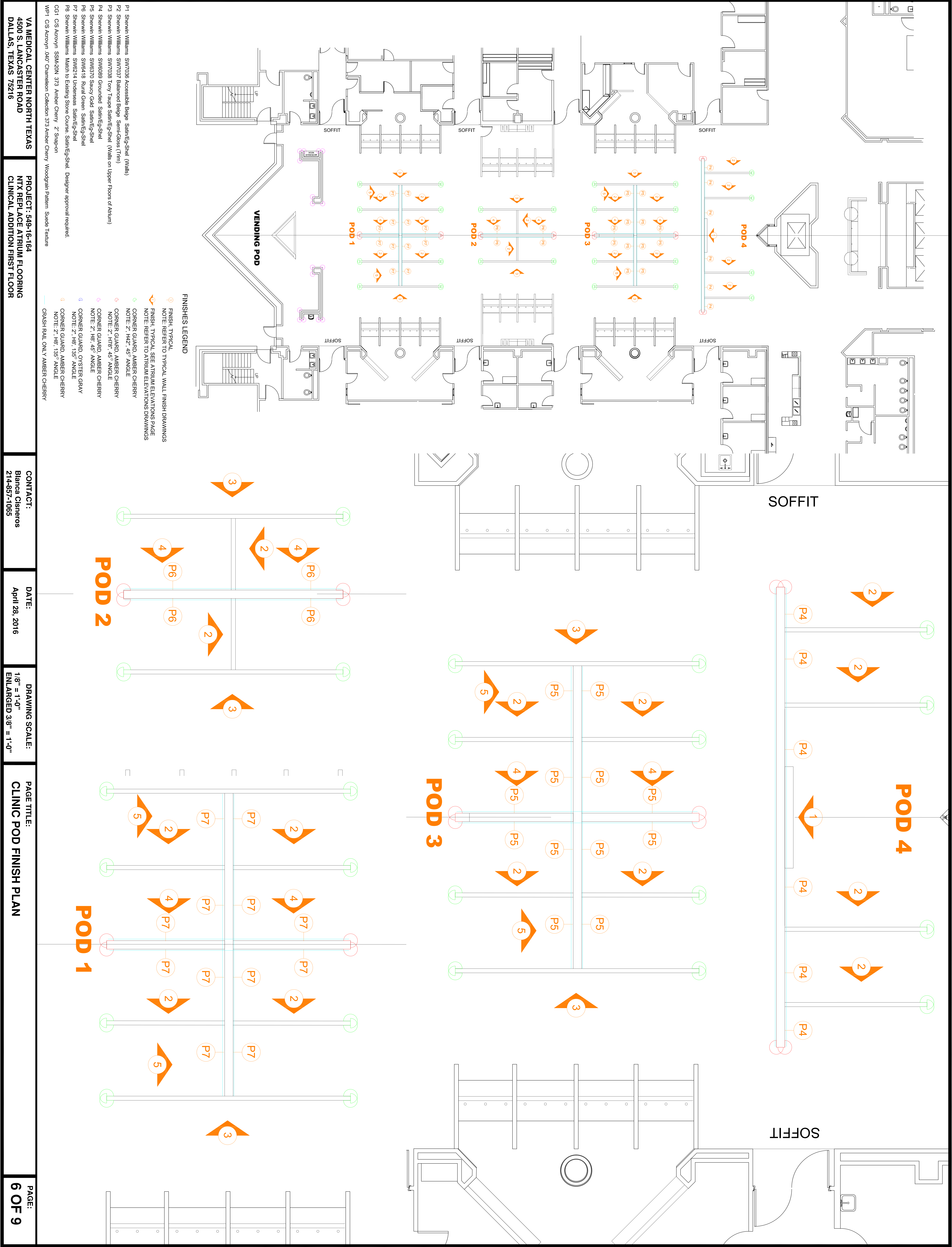
PAGE:
2 OF 9

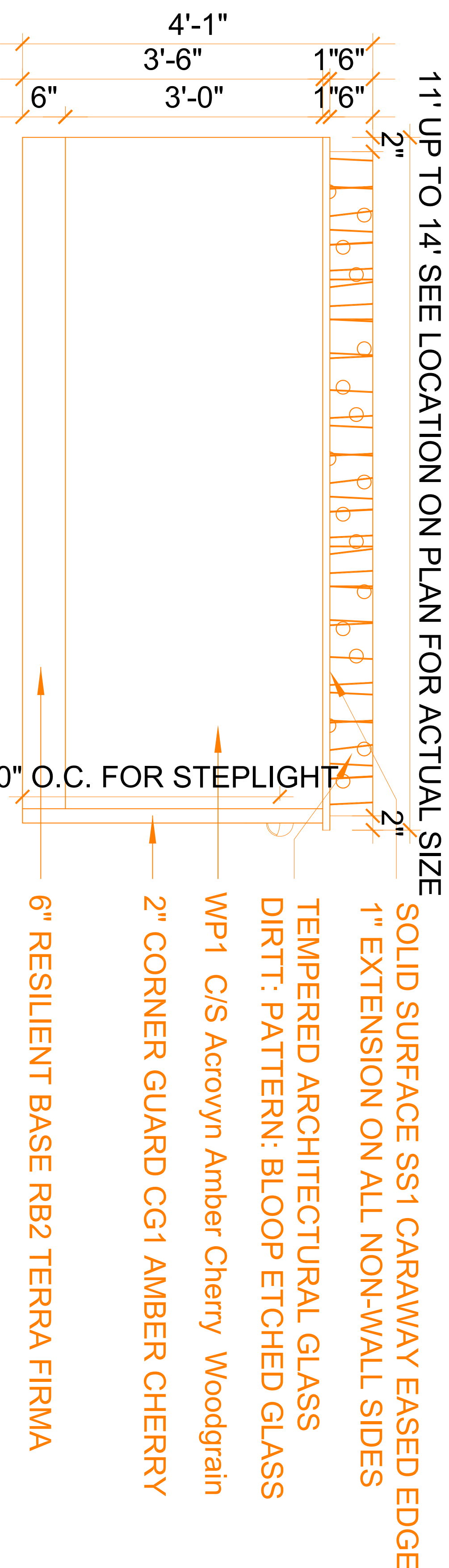
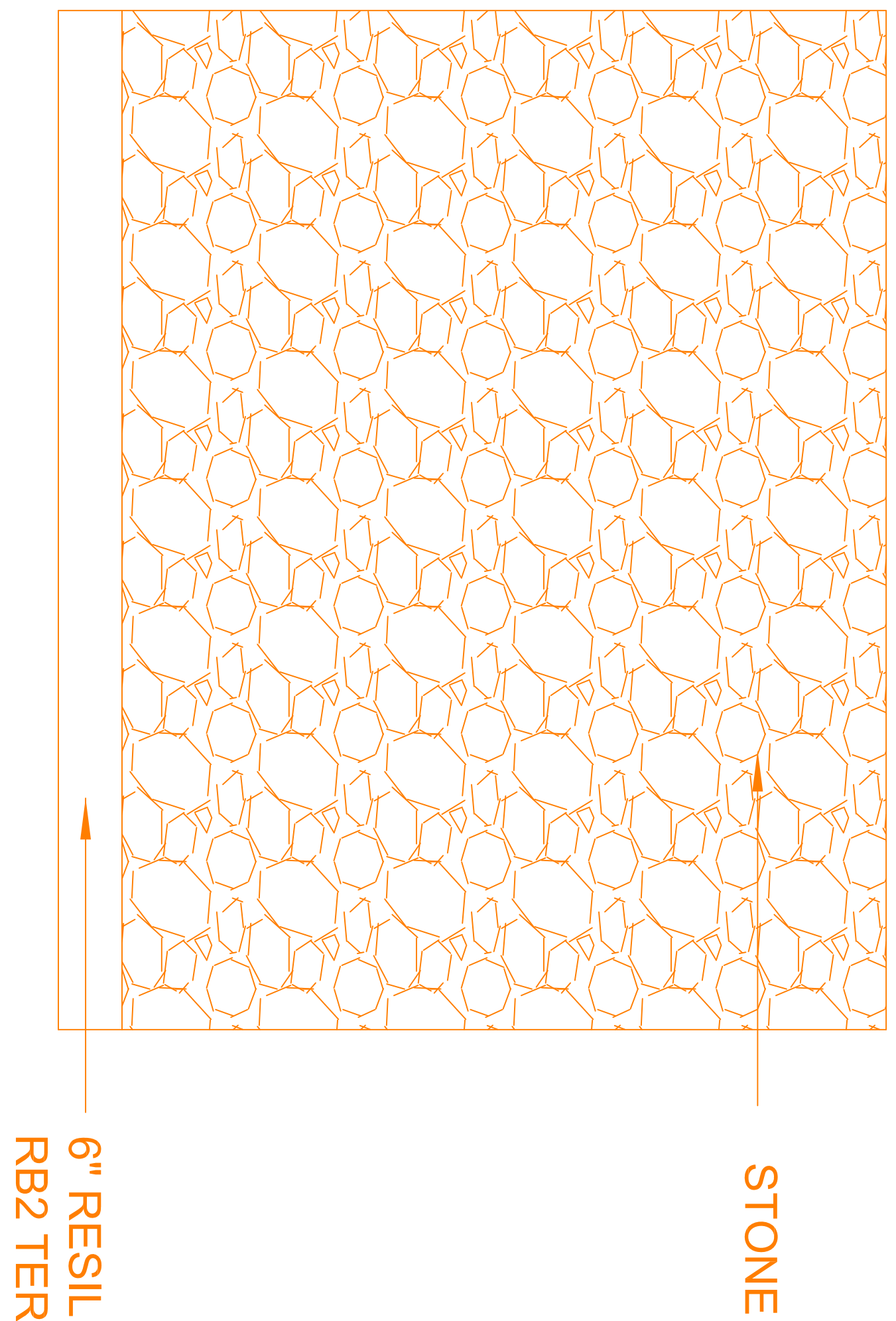
POWER AND DATA LEGEND
DUPLEX OUTLET
220 OUTLET
CHECK CURRENT MALE PLUG FOR CORRECT CONFIGURATION
DATA JACK See page 4 for heights
TV CONNECTION See page 4 for heights
PHARMACY BOARD CONNECTION
See page 4 for heights
CONNECTION FOR LED TASK LIGHTS
USB Connection @ 36" AFF
Electrical not associated with the TVs should be standard ADA height U.N.O.



**NOTE:
EACH MONITOR REQUIRES DUPLEX OUTLET AND
COAXIAL CONNECTION HIDDEN BEHIND MONITOR.
ALL MONITORS TO BE HUNG WITH TAMPER
PROOF SCREWS.**

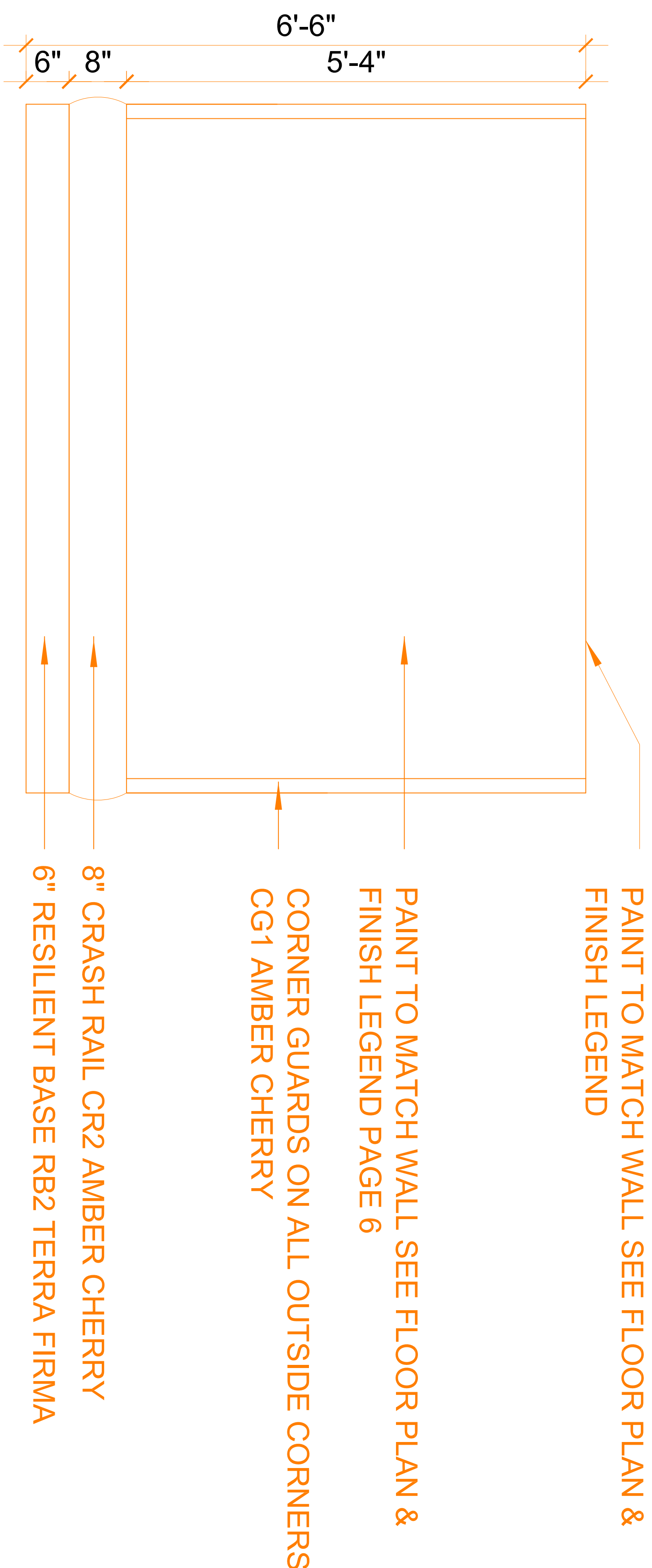
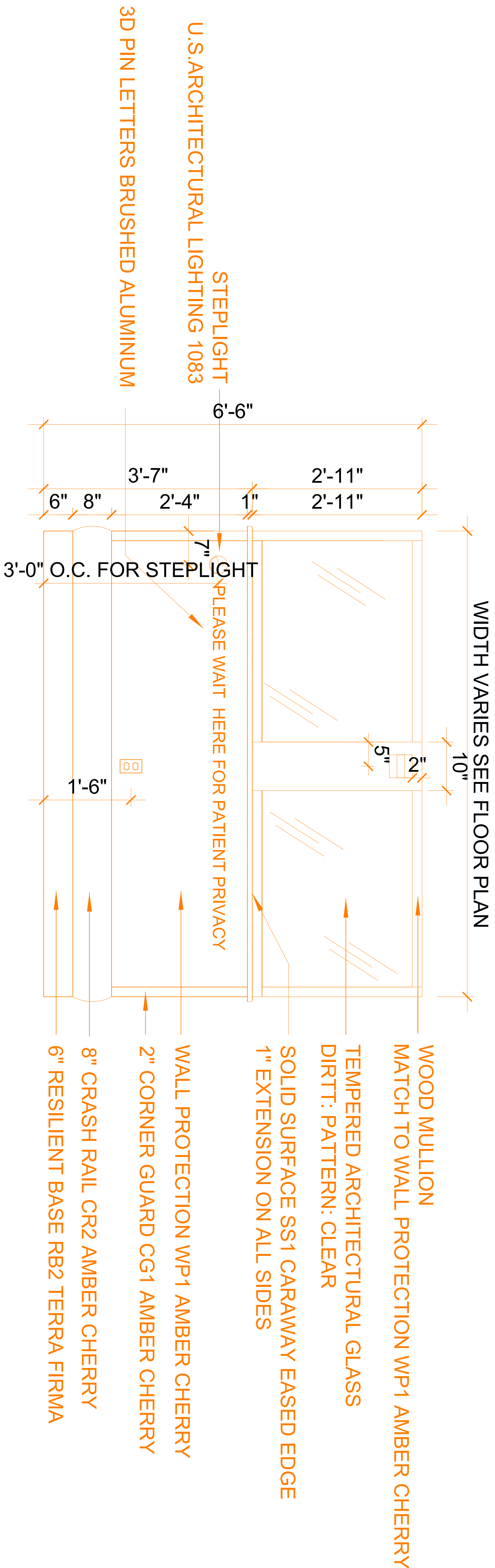






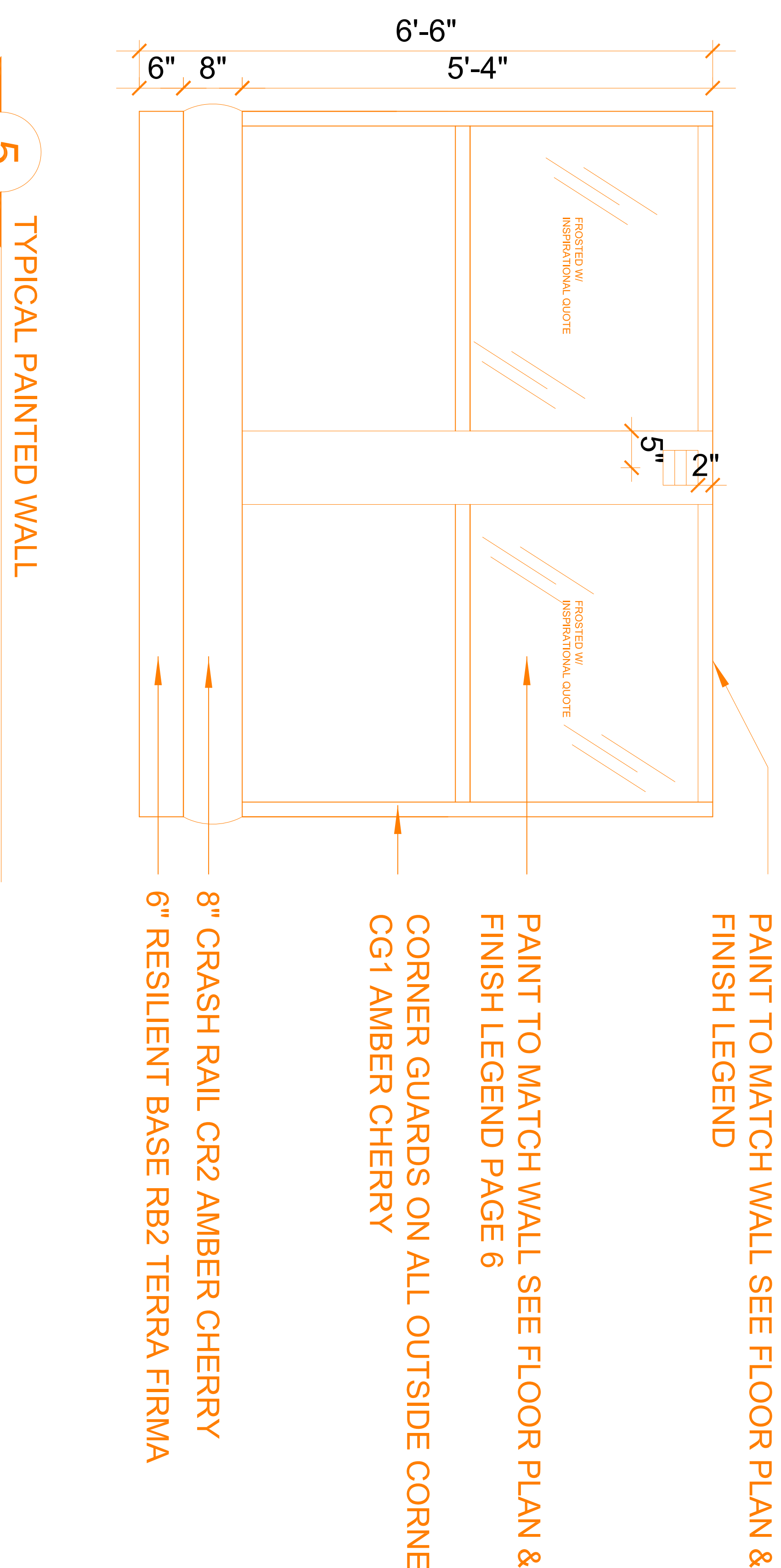
1 NORSTONE FINISH WALL AT FIREPLACE

2 TYPICAL HALF WALL AT PODS

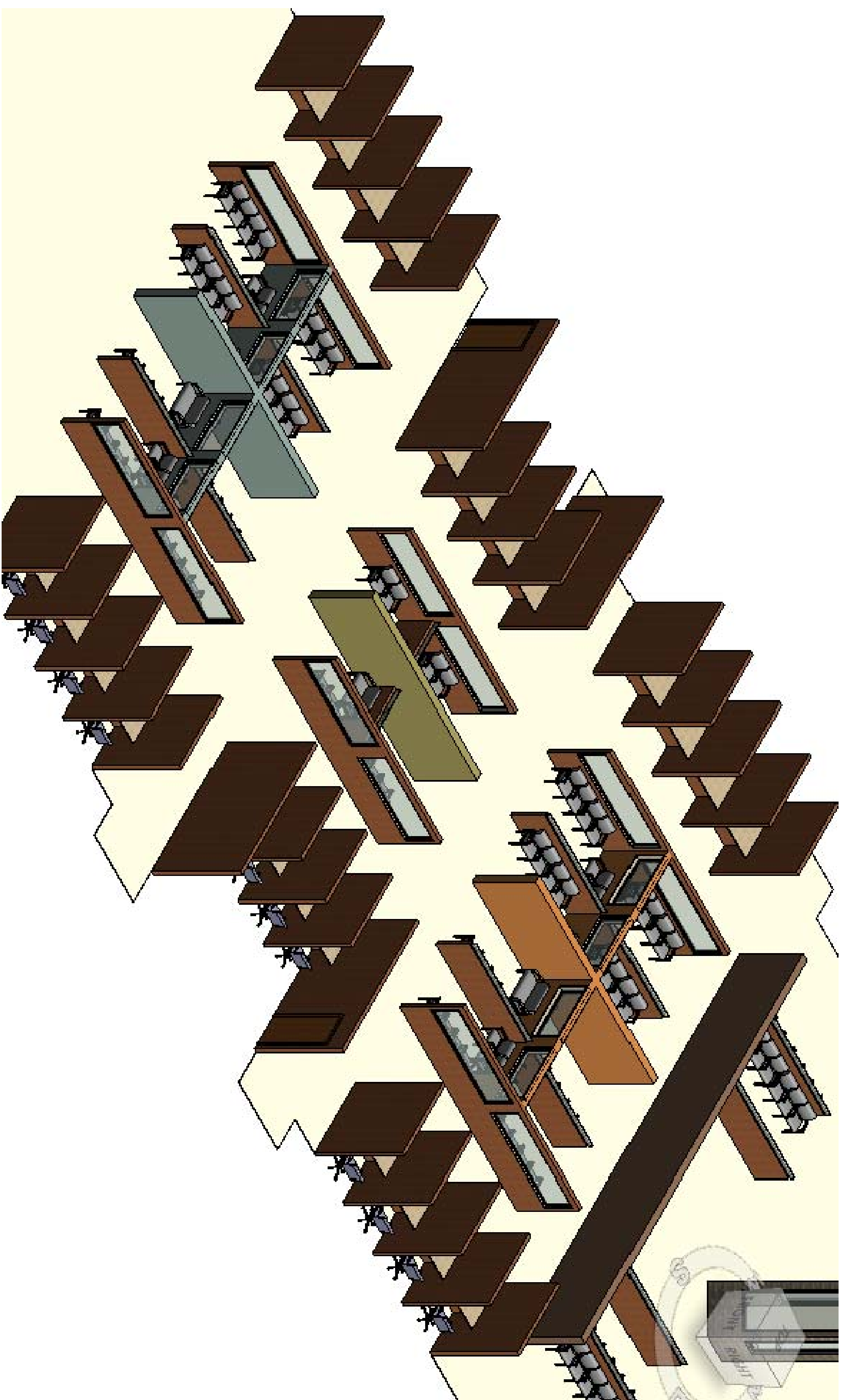


3 TYPICAL WALL GLASS INSERTS

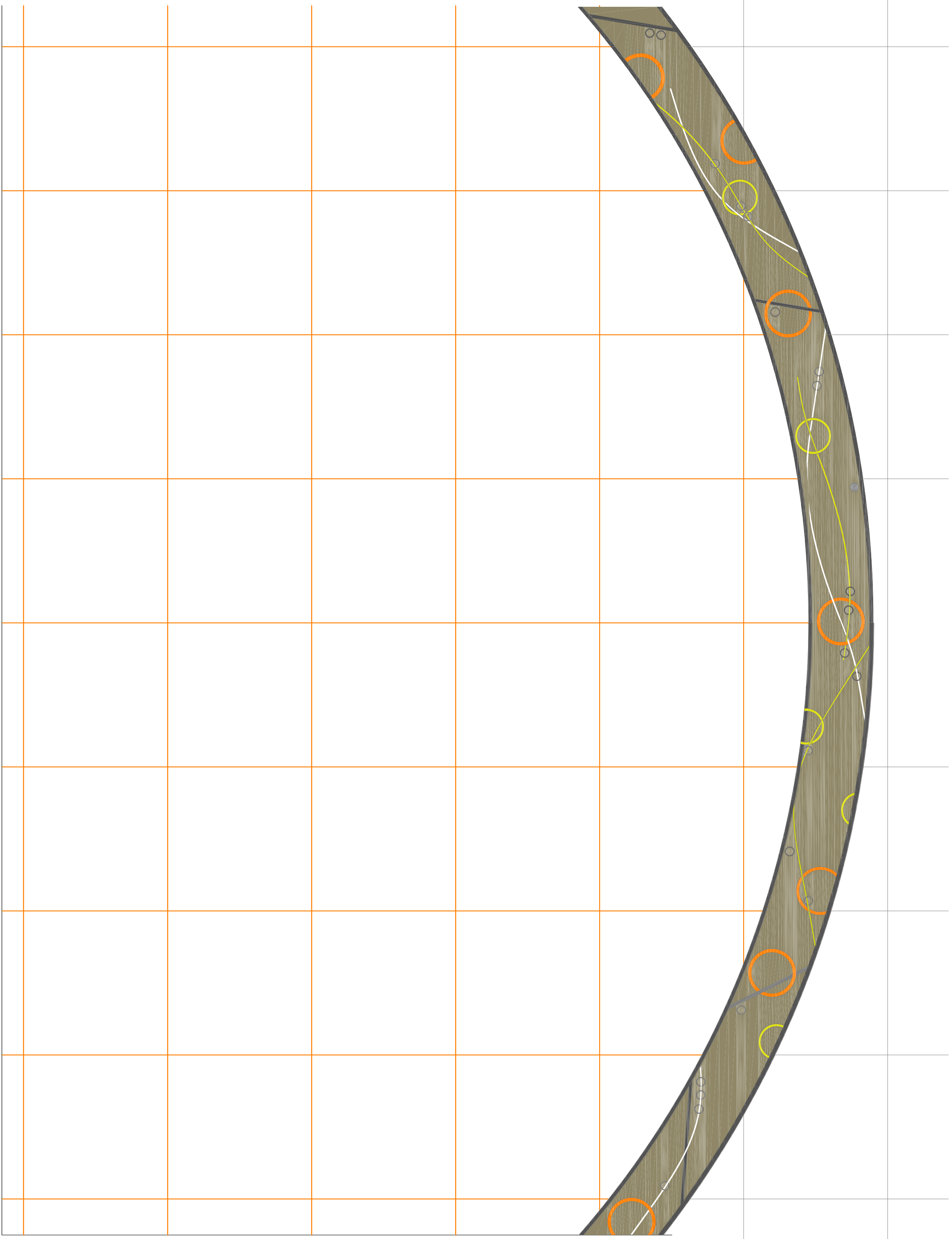
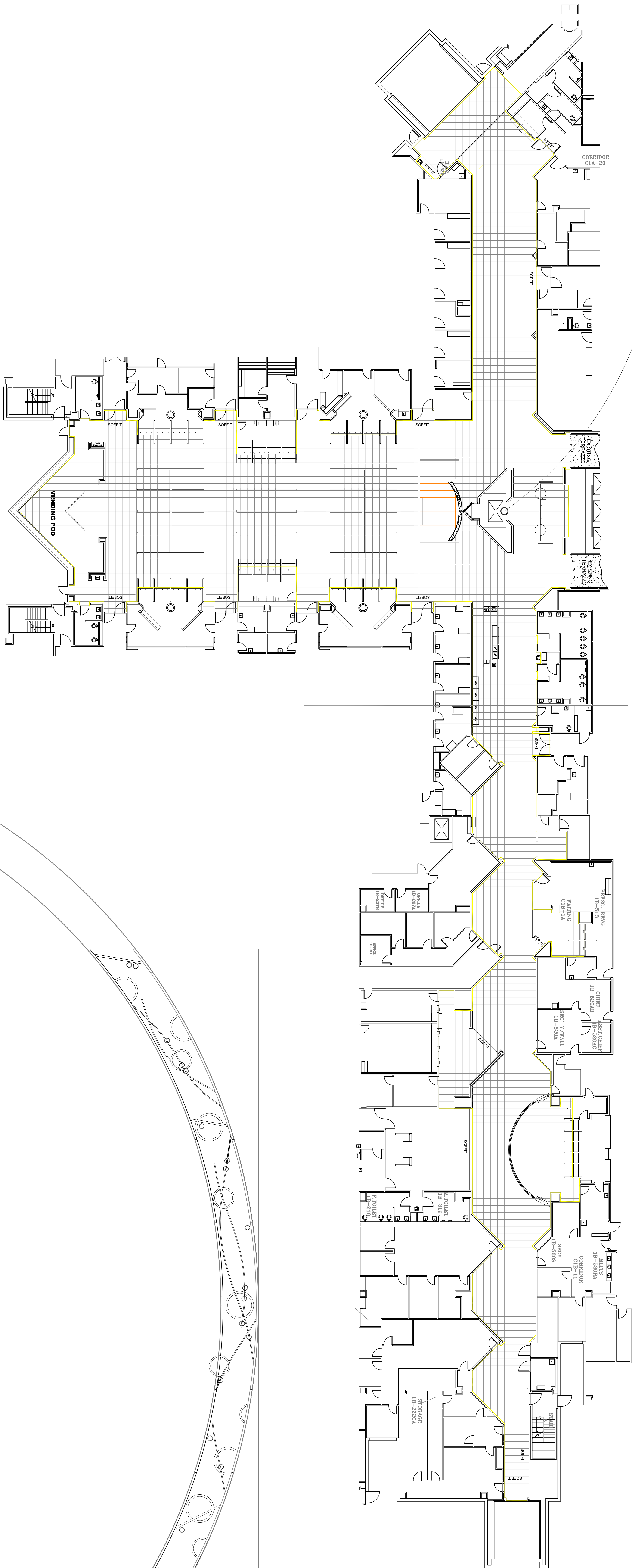
4 TYPICAL PAINTED WALL



5 TYPICAL PAINTED WALL

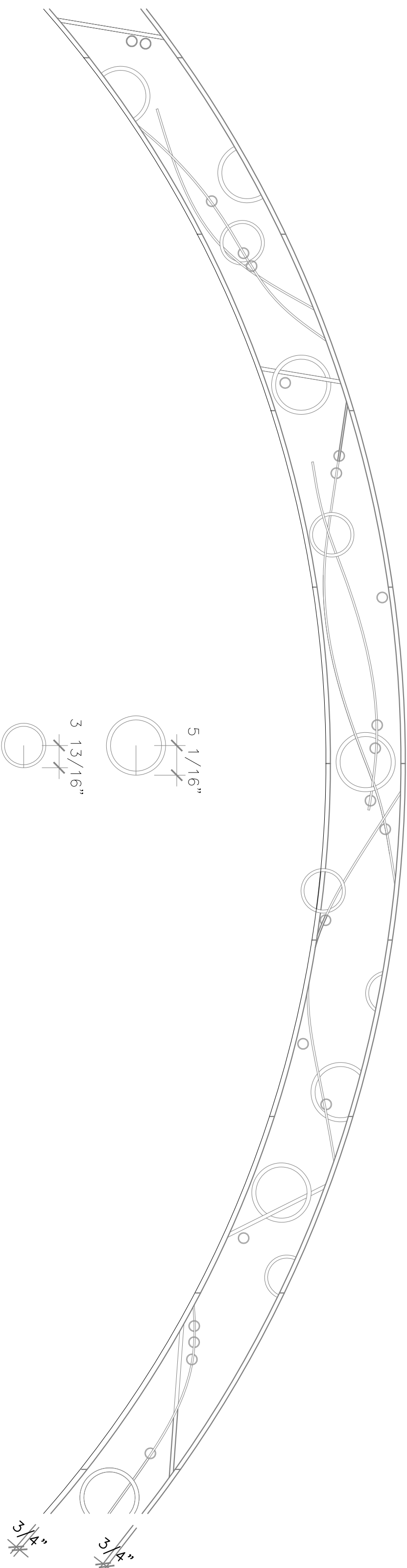
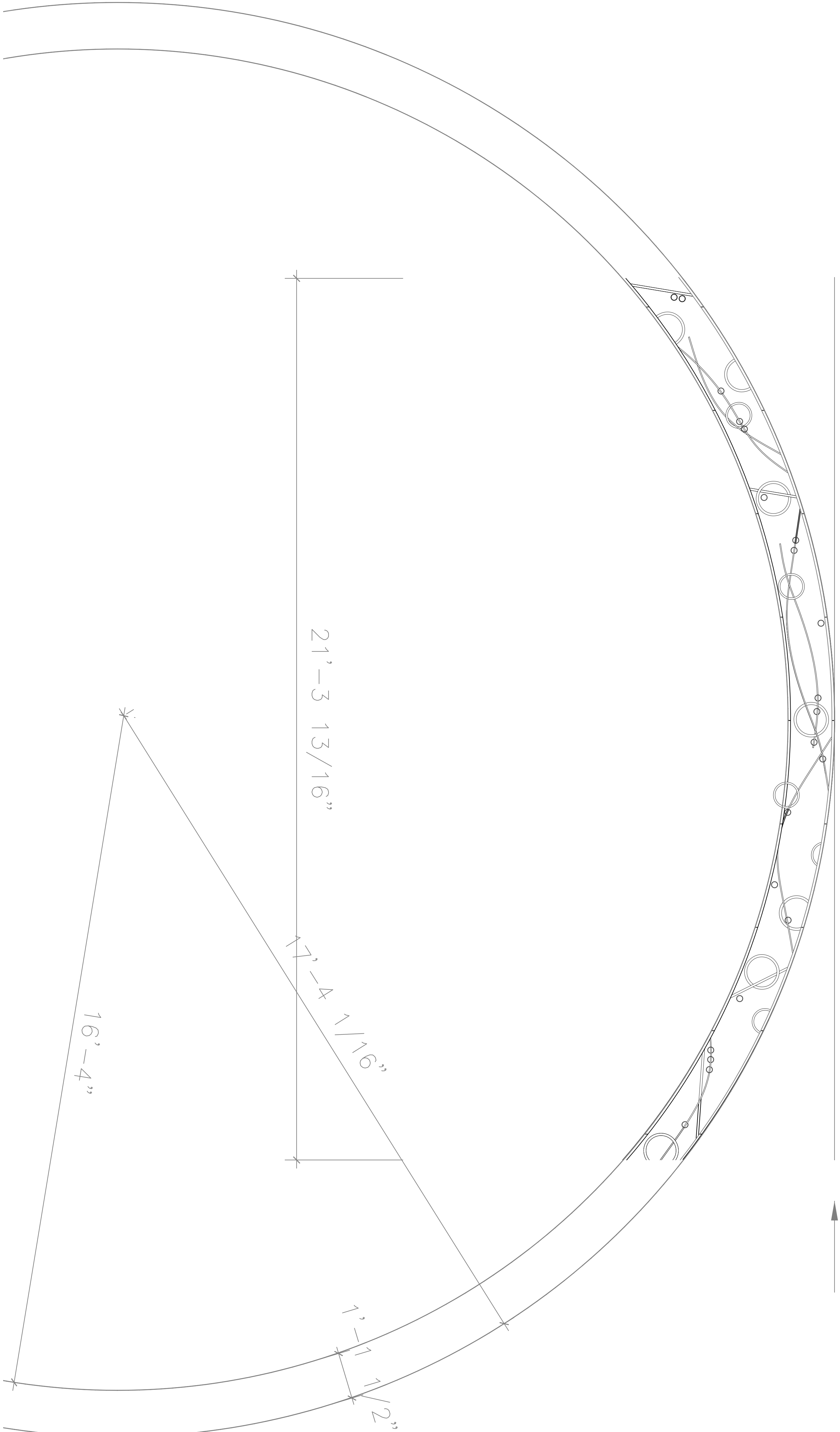


CENTER POINT FOR TERRAZZO TILE START.
CENTER ON CORRIDORS AND CENTER ON ATRIUM.



FLOORING LEGEND

- ☐ F1 30X30 TERRALITE TILE APT-1428 (FIELD TILE - WHITE)
- ☐ F2 30X30 TERRALITE TILE APT-1428 (FIELD TILE - WHITE)
- ☐ F1 TERRALITE TILE APT-1428 (FIELD TILE - BORDER ACCENT - WHITE)
- ☐ F2 TERRALITE TILE APT-1428 (FIELD TILE - BORDER ACCENT - WHITE)
- ☐ F1 TERRALITE TILE APT-1428 (FIELD TILE - BORDER ACCENT - RUST)
- ☐ F2 TERRALITE TILE APT-1428 (FIELD TILE - BORDER ACCENT - RUST)
- ☐ F1 TERRALITE TILE APT-1428 (FIELD TILE - BORDER ACCENT - LIGHT GRAY)
- ☐ F2 TERRALITE TILE APT-1428 (FIELD TILE - BORDER ACCENT - LIGHT GRAY)
- ☐ F1 TERRALITE TILE APT-1428 (FIELD TILE - BORDER ACCENT - ONE - GREEN)
- ☐ F2 TERRALITE TILE APT-1428 (FIELD TILE - BORDER ACCENT - ONE - GREEN)
- ☐ F1 TERRALITE TILE APT-1428 (FIELD TILE - BORDER ACCENT - TWO - DARK GRAY)
- ☐ F2 TERRALITE TILE APT-1428 (FIELD TILE - BORDER ACCENT - TWO - DARK GRAY)



VA MEDICAL CENTER NORTH TEXAS
4500 S. LANCASTER ROAD
DALLAS, TEXAS 75216

PROJECT : 349-16-164
NTX REPLACE ATRIUM FLOORING
CLINICAL ADDITION FIRST FLOOR

CONTACT:
Blanca Cisneros
214-857-1065

DATE:
April 28, 2016

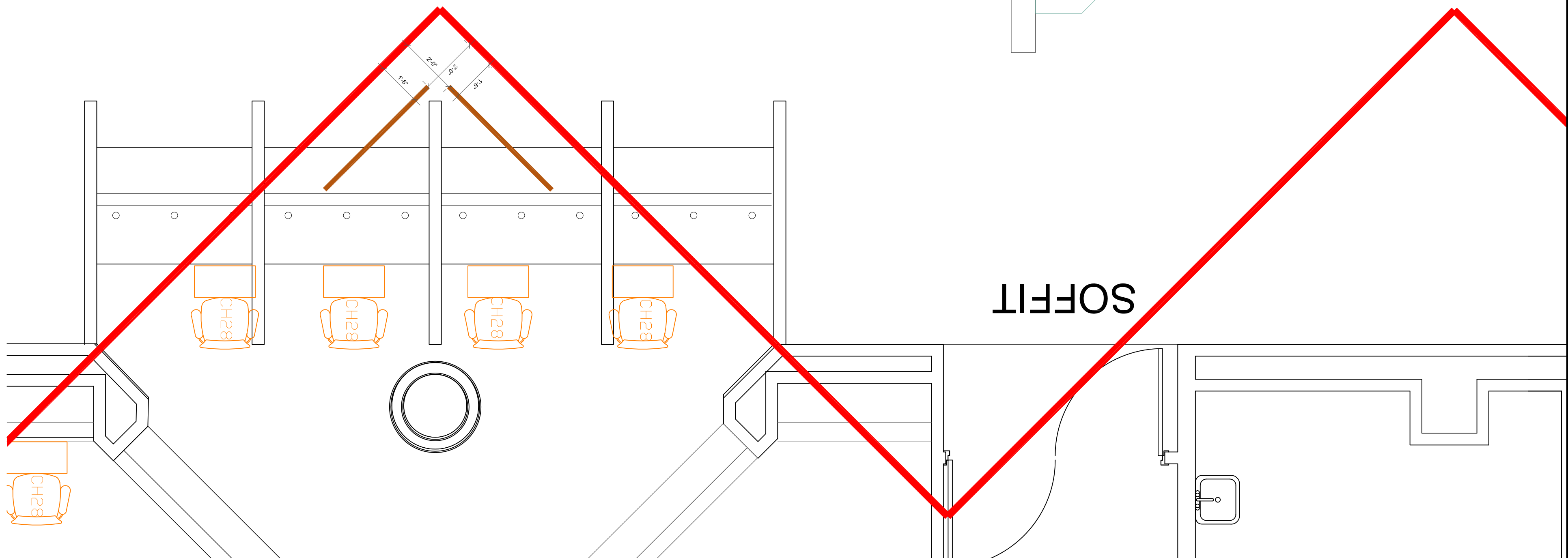
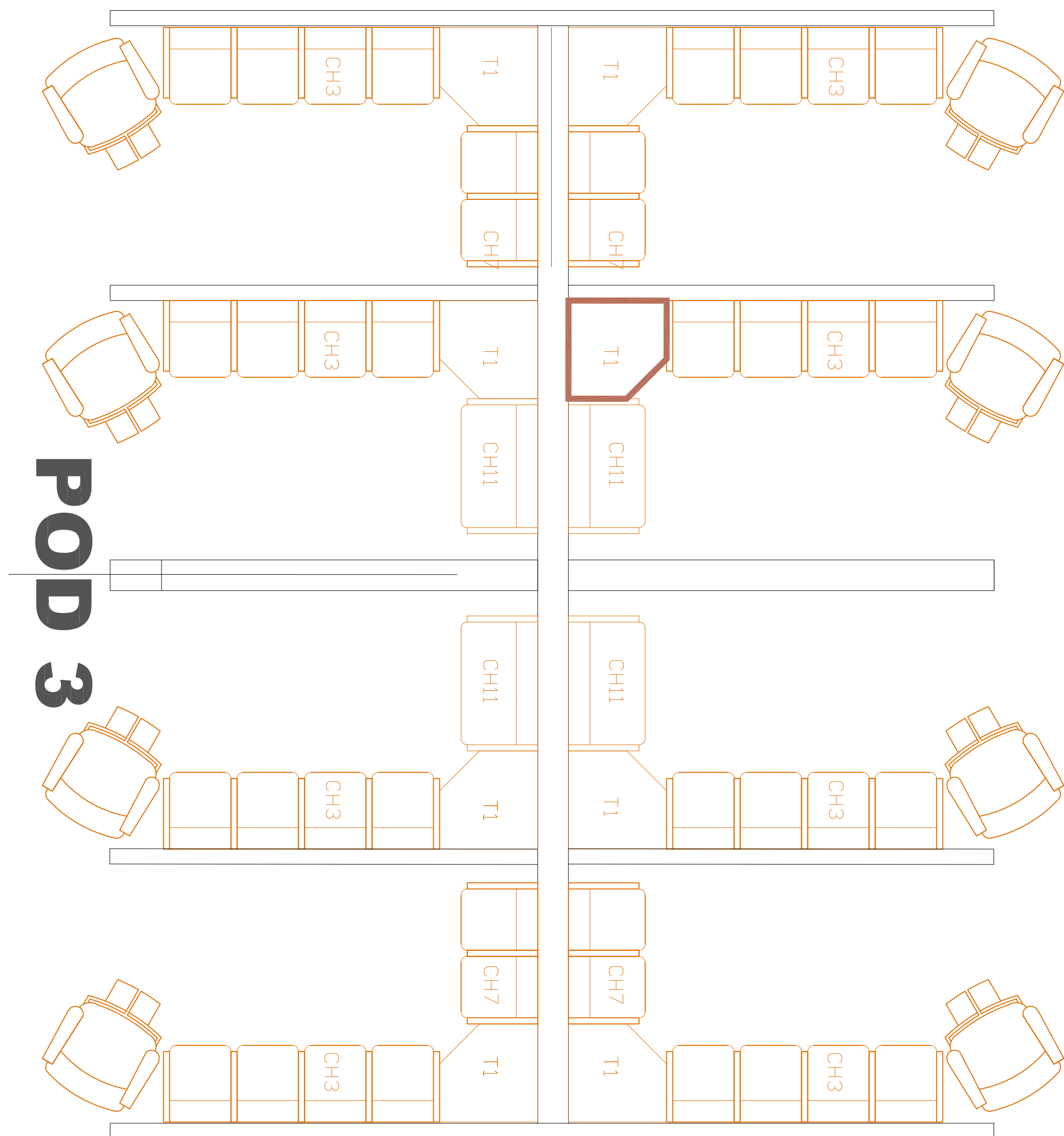
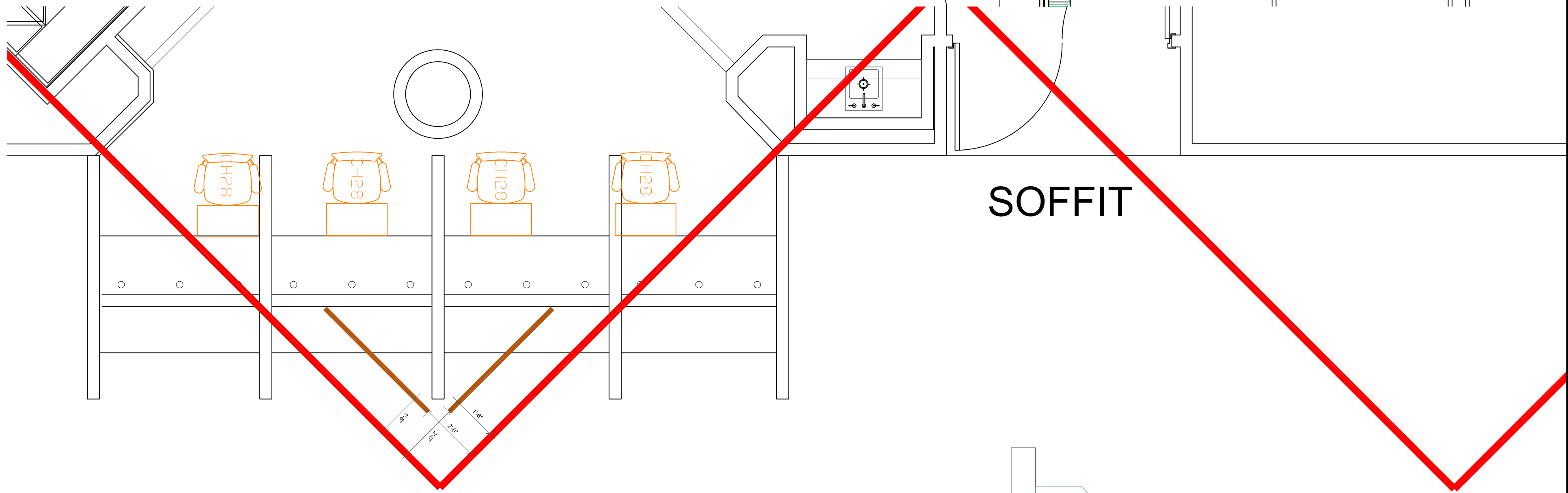
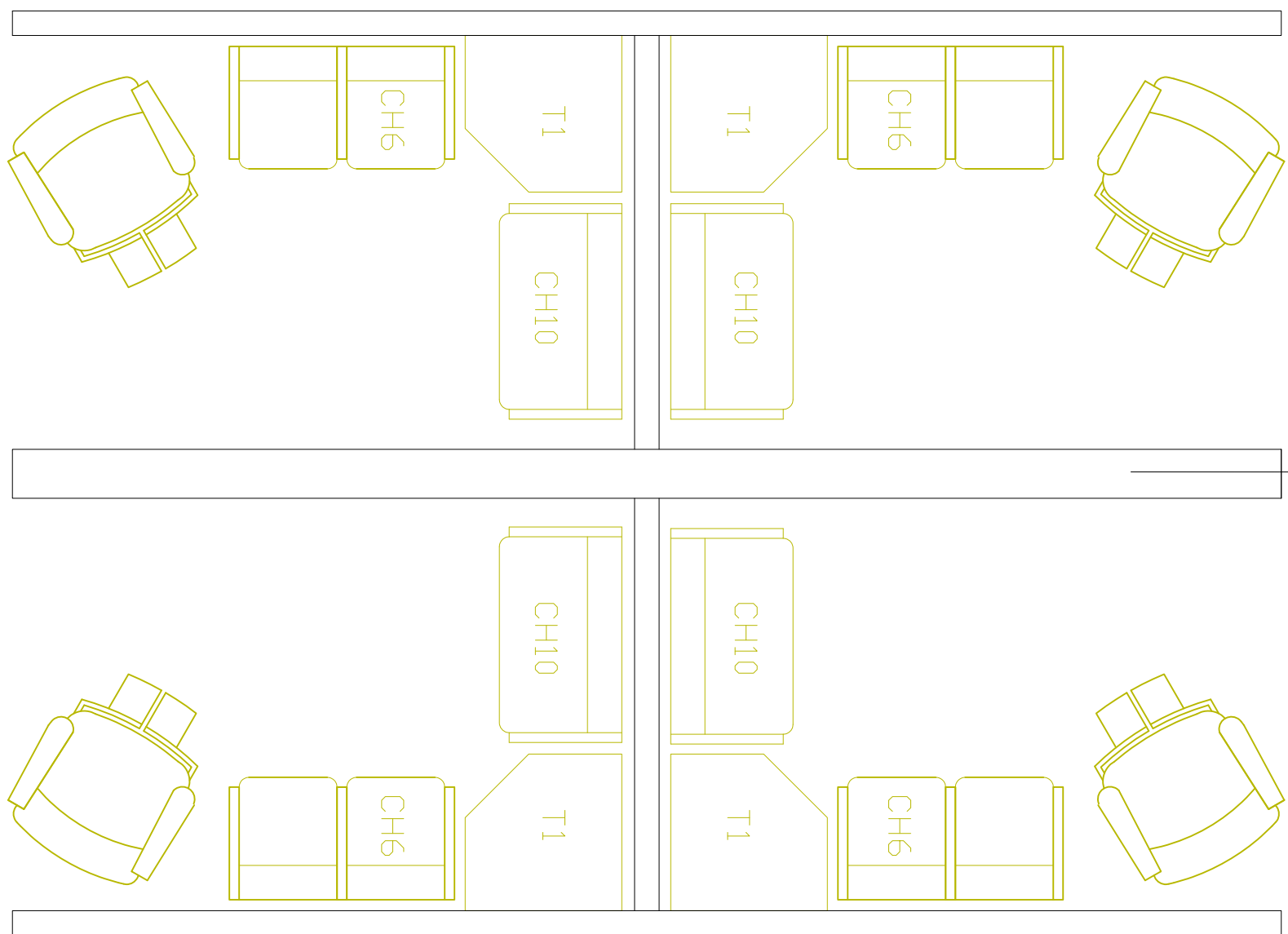
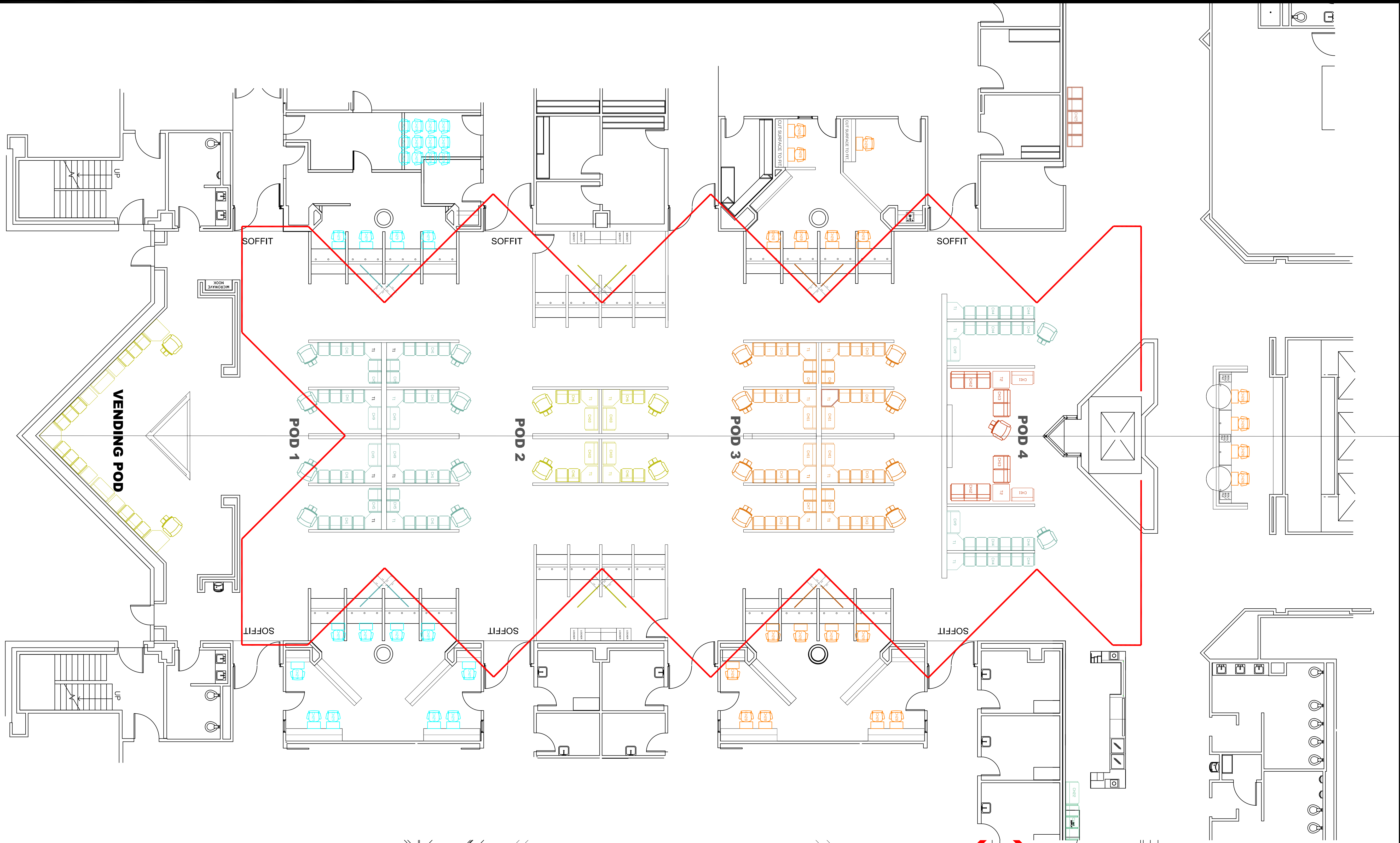
DRAWING SCALE:
1/16" = 1'-0"
ENLARGED 3/4" = 1'-0"

PAGE TITLE:
CLINIC FLOORING PLAN

PAGE:
8 OF 9

- BANNER LEGEND**
- BANNER BROWN**
BANNER BROWN
BANNER ORANGE
BANNER GREEN
BANNER BLUE
- BANNER 1**
BANNER 1
BANNER 2
BANNER 3
BANNER 4
BANNER 5
BANNER 6
BANNER 7
- BANNER 1**
BANNER 1
BANNER 2
BANNER 3
BANNER 4
BANNER 5
BANNER 6
BANNER 7
- BANNER 1**
BANNER 1
BANNER 2
BANNER 3
BANNER 4
BANNER 5
BANNER 6
BANNER 7
- BANNER 1**
BANNER 1
BANNER 2
BANNER 3
BANNER 4
BANNER 5
BANNER 6
BANNER 7

- KNOLL TASK SEATING**
- KNOLL TASK SEATING**
KNOLL TASK SEATING
KNOLL TASK SEATING
KNOLL TASK SEATING
KNOLL TASK SEATING
KNOLL TASK SEATING
KNOLL TASK SEATING
KNOLL TASK SEATING
- KNOLL TASK SEATING**
KNOLL TASK SEATING
KNOLL TASK SEATING
KNOLL TASK SEATING
KNOLL TASK SEATING
KNOLL TASK SEATING
KNOLL TASK SEATING
KNOLL TASK SEATING
- KNOLL TASK SEATING**
KNOLL TASK SEATING
KNOLL TASK SEATING
KNOLL TASK SEATING
KNOLL TASK SEATING
KNOLL TASK SEATING
KNOLL TASK SEATING
KNOLL TASK SEATING
- KNOLL TASK SEATING**
KNOLL TASK SEATING
KNOLL TASK SEATING
KNOLL TASK SEATING
KNOLL TASK SEATING
KNOLL TASK SEATING
KNOLL TASK SEATING
KNOLL TASK SEATING



POD 2

POD 4

POD 3

POD 1