

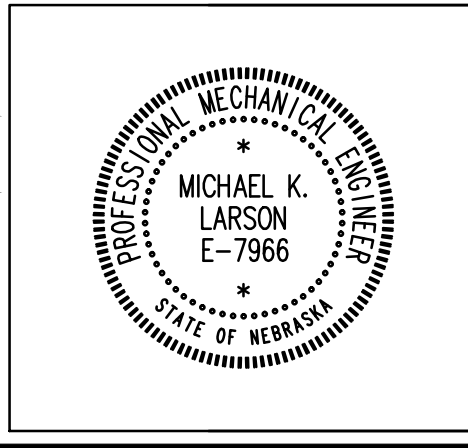
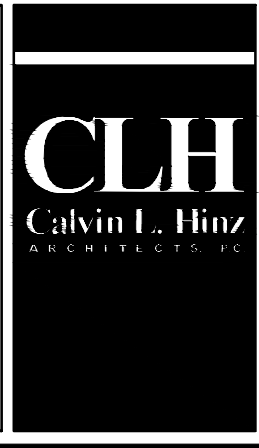
one eighth inch = one foot  
one quarter inch = one foot  
three eighths inch = one foot  
one half inch = one foot  
three quarters inch = one foot  
one inch = one foot  
one and one half inches = one foot  
two inches = one foot  
three inches = one foot

CU File: P:\2011\11053\CAU\Mechanical\11053\_M1.dwg Printed: February 21, 2012 @ 3:47pm By: SFP

**KRS**  
engineering  
11620 ARBOR STREET SUITE 100  
OMAHA, NEBRASKA 68144  
PHONE: 402.932.0100  
FAX: 402.932.1001  
www.krsengineering.com  
KRS # 111053  
COPYRIGHT 2012  
This document and the information contained may not be reproduced without the express written permission of KRS Engineering, LLC. Unauthorized copying, disclosure or construction use are prohibited by the copyright law.

Revisions	Date

© 2000 Calvin L. Hinz Architects P.C.  
These plans are specifically designed for construction by Calvin L. Hinz Architects and are intended for no other purposes. Permission for use of this document in part or whole without written consent of Calvin L. Hinz Architects is prohibited.



Calvin L. Hinz Architects, P.C. CLH 2007-97  
3705 North 200th Street  
Elkhorn, Nebraska 68022  
Phone: 402.291.6941 Fax: 402.291.9193

KRS Engineering  
11620 Arbor Street Suite 100  
Omaha, Nebraska 68144  
Phone: 402.932.0100 Fax: 402.932.1001

Kenneth D. Lathrum & Associates, P.C.  
1801 N. 81st Street  
Omaha, Nebraska 68114  
402.391.5861

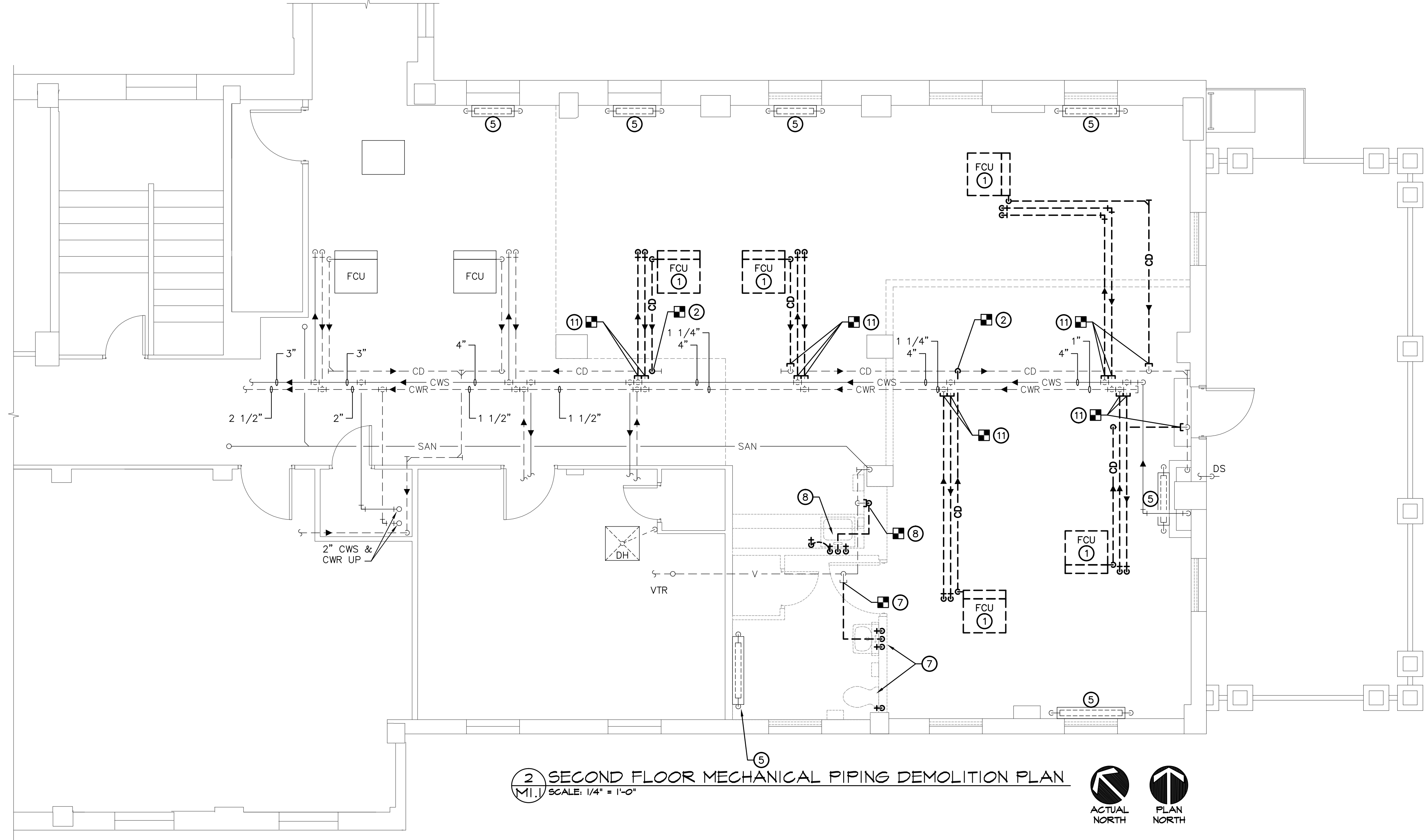
SECOND FLOOR MECHANICAL  
DEMOLITION PLANS

BUILDING FIVE  
RENOVATE VBA CONFERENCE ROOM

VBA Lincoln, NE

Date February 22, 2012  
Checked by MKL  
Drawn by SFP

Project Number: 636-12-803  
Building Number: Five  
Drawing Number: M1.1  
Dwg. 5 of 9



**MECHANICAL KEYNOTES**

- 1 REMOVE EXISTING FAN COIL UNIT AND ASSOCIATED SA, RA AND VA DUCTWORK, DIFFUSERS, PIPING, CONTROLS, ETC.
- 2 REMOVE CONDENSATE PIPING TO LOCATION SHOWN. COORDINATE EXTENT OF REMOVAL WITH WORK SHOWN ON NEW PLANS.
- 3 EXISTING THERMOSTAT TO BE RELOCATED, SEE SHEET M2.1.
- 4 REMOVE ALL VENTILATION AIR DUCTWORK FROM FAN COIL UNITS TO LOCATION SHOWN. REMOVE VA MAIN TO LOCATION SHOWN. COORDINATE EXTENT OF REMOVAL WITH WORK SHOWN ON NEW PLAN.
- 5 EXISTING FINITUBE AND ENCLOSURE TO REMAIN.
- 6 REMOVE EXISTING CEILING EXHAUST FANS AND ASSOCIATED DUCTWORK AND CONTROLS. REMOVE EA MAIN TO LOCATION SHOWN AND CAP AIR TIGHT.
- 7 REMOVE EXISTING LAVATORY AND WATER CLOSET AND ASSOCIATED ACCESSORIES AND PIPING. REMOVE PIPING BACK TO MAINS AND CAP. PATCH REMAINING FLOOR OPENINGS AS NECESSARY TO MATCH EXISTING CONSTRUCTION. COORDINATE WITH GENERAL CONTRACTOR.
- 8 REMOVE EXISTING BAR SINK AND ASSOCIATED ACCESSORIES AND PIPING. REMOVE PIPING BACK TO MAINS AND CAP. PATCH REMAINING FLOOR OPENINGS AS NECESSARY TO MATCH EXISTING CONSTRUCTION. COORDINATE WITH GENERAL CONTRACTOR.
- 9 EXISTING THERMOSTAT TO REMAIN.
- 10 REMOVE EXISTING EXHAUST DUCT TO LOCATION SHOWN. COORDINATE EXTENT OF REMOVAL WITH WORK SHOWN ON NEW PLANS.
- 11 REMOVE CHILLED WATER SUPPLY AND RETURN PIPING AND CONDENSATE PIPING. CAP AT MAIN.
- 12 REMOVE EXISTING THERMOSTAT.

