

A

B

C

D

E

F

A

B

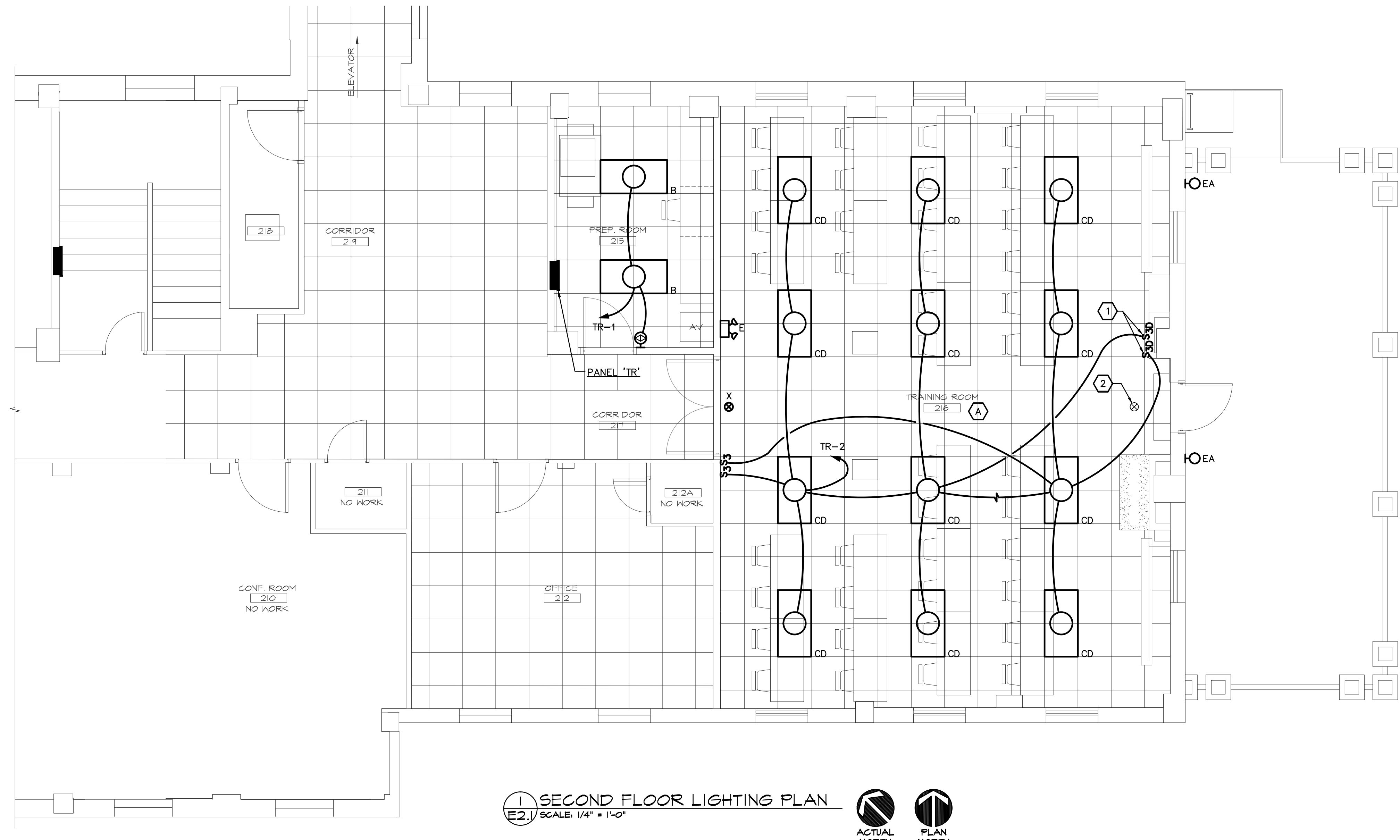
C

D

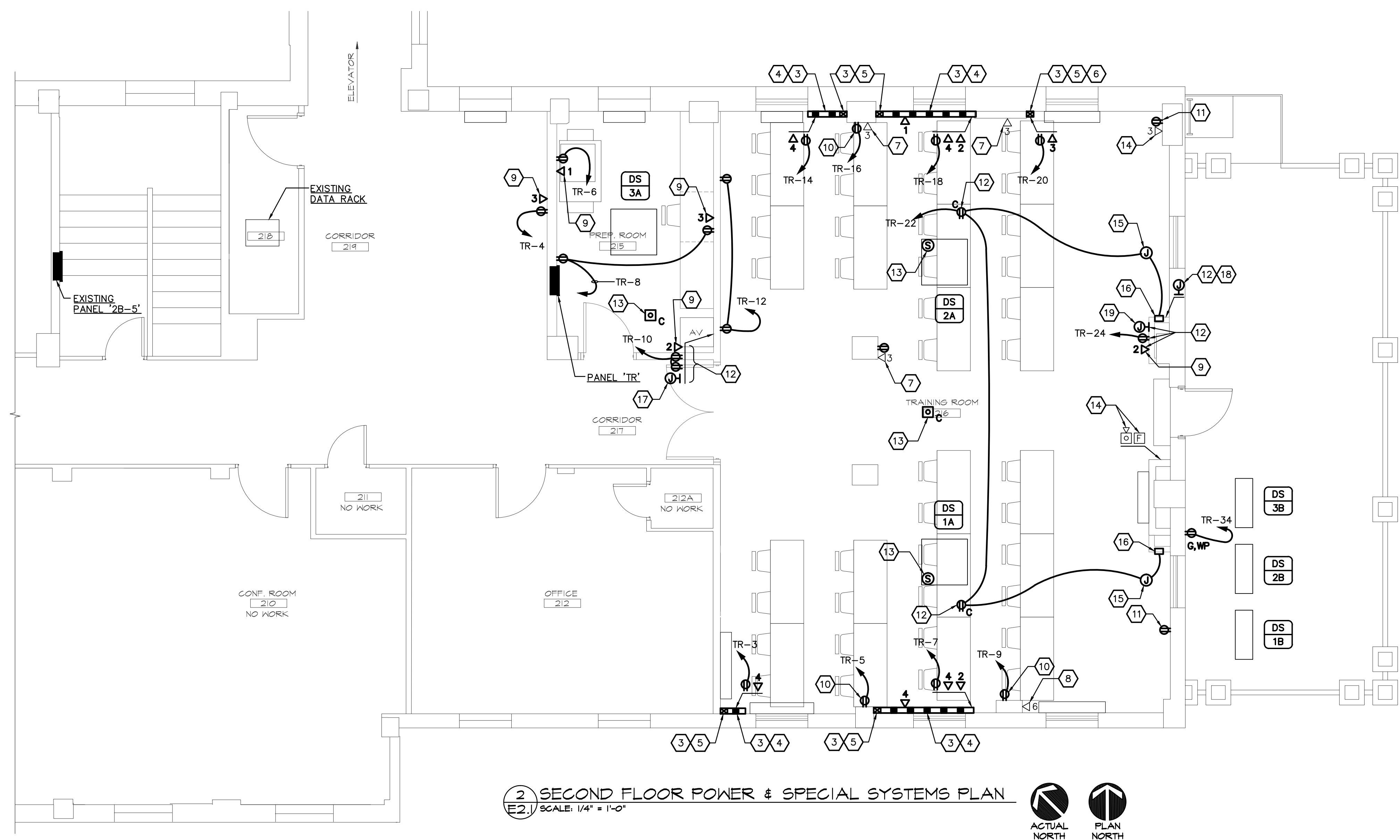
E

F

three inches = one foot
one and one half inches = one foot
one inch = one foot
three quarters inch = one foot
one half inch = one foot
three eighths inch = one foot
one quarter inch = one foot
one eighth inch = one foot



1 SECOND FLOOR LIGHTING PLAN
E2.1 SCALE: 1/4" = 1'-0"
ACTUAL NORTH
PLAN NORTH



2 SECOND FLOOR POWER & SPECIAL SYSTEMS PLAN
E2.2 SCALE: 1/4" = 1'-0"
ACTUAL NORTH
PLAN NORTH

GENERAL ELECTRICAL KEYNOTES

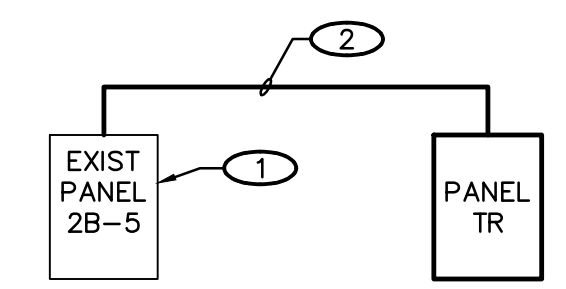
1 PROVIDE OCCUPANCY SENSOR CONTROL OF THE LIGHTING IN ROOM/AREA WITH THIS KEYNOTE UNLESS OTHERWISE NOTED. THIS AUTOMATIC CONTROL SHALL BE IN ADDITION TO AND CONNECTED ON THE LINE SIDE OF MANUAL CONTROL SHOWN. SEE SPECIFICATIONS FOR ADDITIONAL REQUIREMENTS.

ELECTRICAL KEYNOTES

- 1 PROVIDE 3-WAY VERTICAL SLIDE DIMMER SWITCH COMPATIBLE WITH BALLASTS BEING CONTROLLED.
- 2 EXISTING EXIT LIGHT TO BE INSTALLED AT NEW LOCATION SHOWN.
- 3 PROVIDE WIREMOLD IVORY COLORED 4000 SERIES TWO PIECE SURFACE RACEWAY WITH DIVIDER (TWO COMPARTMENT).
- 4 INSTALL SURFACE RACEWAY HORIZONTALLY. PROVIDE ACCESSORIES AS REQUIRED TO INSTALL DEVICES INDICATED. PROVIDE FLAT ELBOW TO CONNECT HORIZONTAL SECTION TO VERTICAL SECTION.
- 5 INSTALL SURFACE RACEWAY VERTICALLY TO ACCESSIBLE LOCATION ABOVE CEILING. PROVIDE ACCESSORIES AS REQUIRED TO CONNECT POWER AND TELECOM CONDUIT ABOVE CEILING.
- 6 PROVIDE ACCESSORIES AS REQUIRED TO INSTALL DEVICES INDICATED AT LOWER END OF RACEWAY.
- 7 EXISTING DATA CABLE TO BE REUSED AT LOCATION INDICATED. PROVIDE NEW DATA JACKS AND INSTALL IN EXISTING FLUSH MOUNTED DEVICE BOX. PROVIDE NEW COVER PLATE.
- 8 EXISTING DATA CABLE TO BE REUSED AT LOCATION INDICATED. PROVIDE NEW TWO GANG SURFACE RACEWAY DEVICE BOX INSTALLED OVER EXISTING ONE GANG FLUSH MOUNTED DEVICE BOX. PROVIDE NEW DATA JACKS IN NEW DEVICE BOX. PROVIDE NEW COVER PLATE.
- 9 REROUTE EXISTING DATA CABLE TO NEW LOCATION. PROVIDE NEW JACKS AND COVER PLATE. COORDINATE WITH DEMOLITION WORK.
- 10 PROVIDE NEW RECEPTACLE, COVER PLATE AND CIRCUIT AT EXISTING RECEPTACLE LOCATION. COORDINATE WITH DEMOLITION WORK.
- 11 PROVIDE NEW RECEPTACLE AND COVER PLATE AT EXISTING RECEPTACLE LOCATION. CONNECT TO EXISTING CIRCUIT. COORDINATE WITH DEMOLITION WORK.
- 12 COORDINATE LOCATION OF DEVICES WITH AUDIO/VISUAL SYSTEM INSTALLER.
- 13 INSTALL FIRE ALARM DEVICE REMOVED BY DEMOLITION WORK AT NEW LOCATION SHOWN. ALL FIRE ALARM WIRING SHALL BE INSTALLED IN CONDUIT AND INSTALLATION METHODS AND MATERIALS SHALL MATCH EXISTING.
- 14 EXISTING DEVICE TO REMAIN.
- 15 PROVIDE CONNECTION TO MOTORIZED PROJECTOR SCREEN. COORDINATE ALL REQUIREMENTS WITH MANUFACTURER.
- 16 CONTROL STATION FOR PROJECTOR SCREEN FURNISHED BY MANUFACTURER. COORDINATE ALL REQUIREMENTS AND LOCATIONS WITH MANUFACTURER AND AV CONTRACTOR.
- 17 PROVIDE FOUR-GANG DEVICE BOX WITH THREE 1" CONDUITS AND ONE 3/4" CONDUIT STUBBED TO ACCESSIBLE LOCATION ABOVE CEILING.
- 18 PROVIDE ONE-GANG DEVICE BOX WITH ONE 3/4" CONDUIT STUBBED TO ACCESSIBLE LOCATION ABOVE CEILING.
- 19 PROVIDE ONE-GANG DEVICE BOX WITH ONE 1" CONDUIT STUBBED TO ACCESSIBLE LOCATION ABOVE CEILING.

PARTIAL ONE-LINE RISER DIAGRAM KEYNOTES

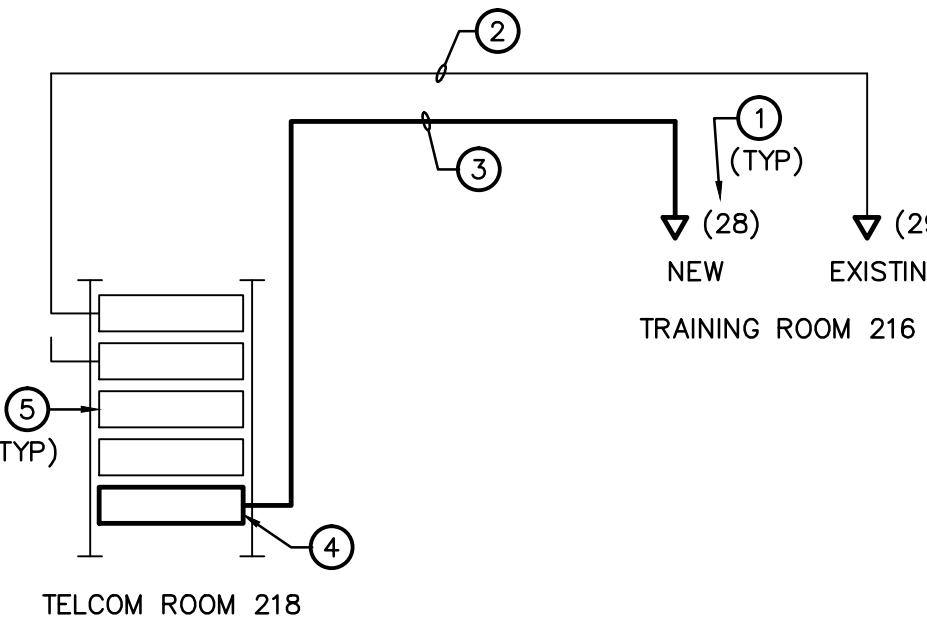
- 1 PROVIDE NEW 125/3 BREAKER IN EXISTING SIEMENS PANELBOARD. REMOVE EXISTING BREAKERS MADE SPARE BY REMOVAL WORK AND REARRANGE EXISTING BREAKERS AS REQUIRED TO INSTALL NEW BREAKER. LABEL PANEL SCHEDULE ACCORDINGLY.
- 2 PROVIDE 4-#1, 1-#6 GRD. IN 2" CONDUIT. CONDUIT SHALL BE ROUTED THROUGH CORRIDORS AND SHALL NOT PASS THROUGH EXISTING DATA ROOM.



1 PARTIAL ONE-LINE RISER DIAGRAM
NOT TO SCALE

TELECOMMUNICATION CONNECTIVITY SCHEMATIC KEYNOTES

- 1 NUMERAL INDICATES APPROXIMATE QUANTITY OF HORIZONTAL LINKS. CONTRACTOR SHALL VERIFY EXACT QUANTITY WITH DRAWINGS.
- 2 EXISTING HORIZONTAL TELCOM CABLES RELOCATED AND RETERMINATED ON NEW JACKS.
- 3 CATEGORY 6 HORIZONTAL TELCOM CABLES. PROVIDE CONTINUOUS CONDUIT FROM WIREMOLD RACEWAY TO TELCOM ROOM.
- 4 PROVIDE CATEGORY 6 PATCH PANEL IN EXISTING RACK.
- 5 EXISTING PATCH PANELS



2 TELECOMMUNICATION CONNECTIVITY SCHEMATIC
NOT TO SCALE

11620 ARBOR STREET SUITE 100
OMAHA, NEBRASKA 68144
PHONE: 402.932.0100
FAX: 402.932.1001
www.krsengineering.com
KRS # 111053
COPYRIGHT 2012
This document and the information contained may not be reproduced without the express written permission of KRS Engineering, LLC. Unauthorized copying, disclosure or construction use are prohibited by the copyright law.

Revisions	Date

© 2000 Calvin L. Hinz Architects P.C. These plans are specifically designed for construction by Calvin L. Hinz Architects and are intended for no other purposes. Permission for use of this document in part or whole without written consent of Calvin L. Hinz Architects is prohibited.	CLH Calvin L. Hinz	KEVIN VANDER KOLK ELECTRICAL ENGINEER STATE OF NEBRASKA	Calvin L. Hinz Architects, P.C. CLH 2007-97 3705 North 200th Street Elkhorn, Nebraska 68022 Phone: 402.291.6941 Fax: 402.291.9193 KRS Engineering 11620 Arbor Street Suite 100 Omaha, Nebraska 68144 Phone: 402.932.0100 Fax: 402.932.1001 Kenneth D. Lathrum & Associates, P.C. 1901 N. 81st Street Omaha, Nebraska 68114 402.391.5861	SECOND FLOOR ELECTRICAL PLANS	BUILDING FIVE RENOVATE VBA CONFERENCE ROOM VBA Lincoln, NE Date February 22, 2012 Checked by JAZ Drawn by GJH	Project Number: 636-12-803 Building Number: Five Drawing Number: E2.1 Dwg. 9 of 9	Office of Construction and Facilities Management Department of Veterans Affairs
---	------------------------------	--	--	-------------------------------	--	--	--