



A

8

C

D

E

F

9



4

5

6

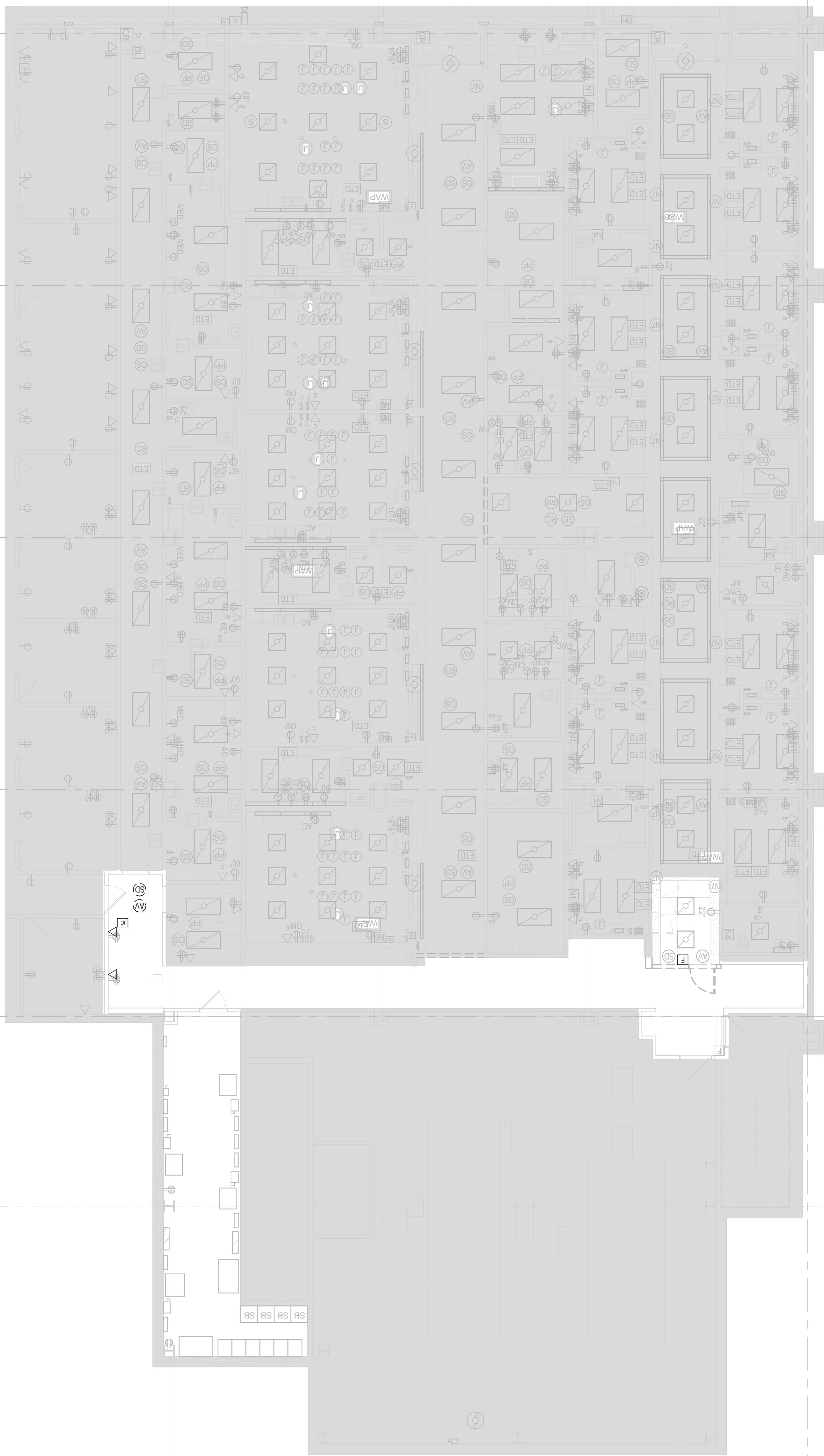
7

8

9

7TH FLOOR PARTIAL DEMOLITION PLAN - PHASE 4B

1/8" = 1'-0"



4

5

6

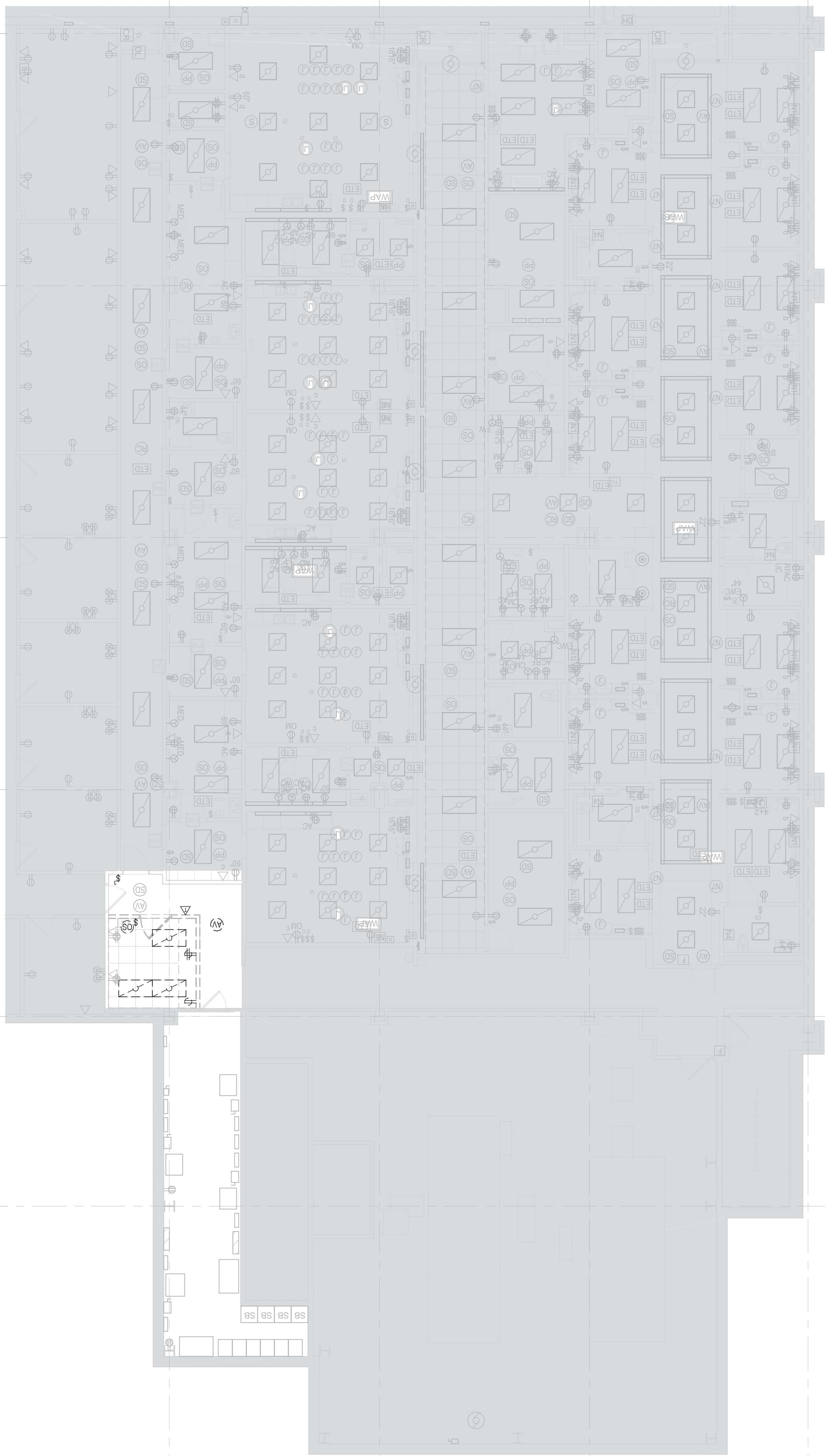
7

8

9

7TH FLOOR PARTIAL DEMOLITION PLAN - PHASE 4A

1/8" = 1'-0"



REVISIONS

DRAWING TITLE

7TH FLOOR DEMOLITION
PLAN - PHASES 4A,4B

PROJECT
EXPANDED ENDO. & PULMONARY
CLINICAL SPACES

DATE
07-01-2016

AS INDICATED

BLDG NO. 150008

E-170.B

ISSUING NUMBER

150008

506-15-101

VA PROJECT NUMBER

DEPARTMENT OF
VETERANS AFFAIRS

BID DOCUMENTS

GENERAL NOTES:

1. REMOVE AND SAVE EXISTING 2X4 TRUSSES FOR REUSE IN NEW CONSTRUCTION. ANY EXTRA FURNITURE SHALL BE TURNED OVER TO THE OWNER FOR FIRST RIGHT OF REFUSAL.

GENERAL DEMOLITION NOTES:

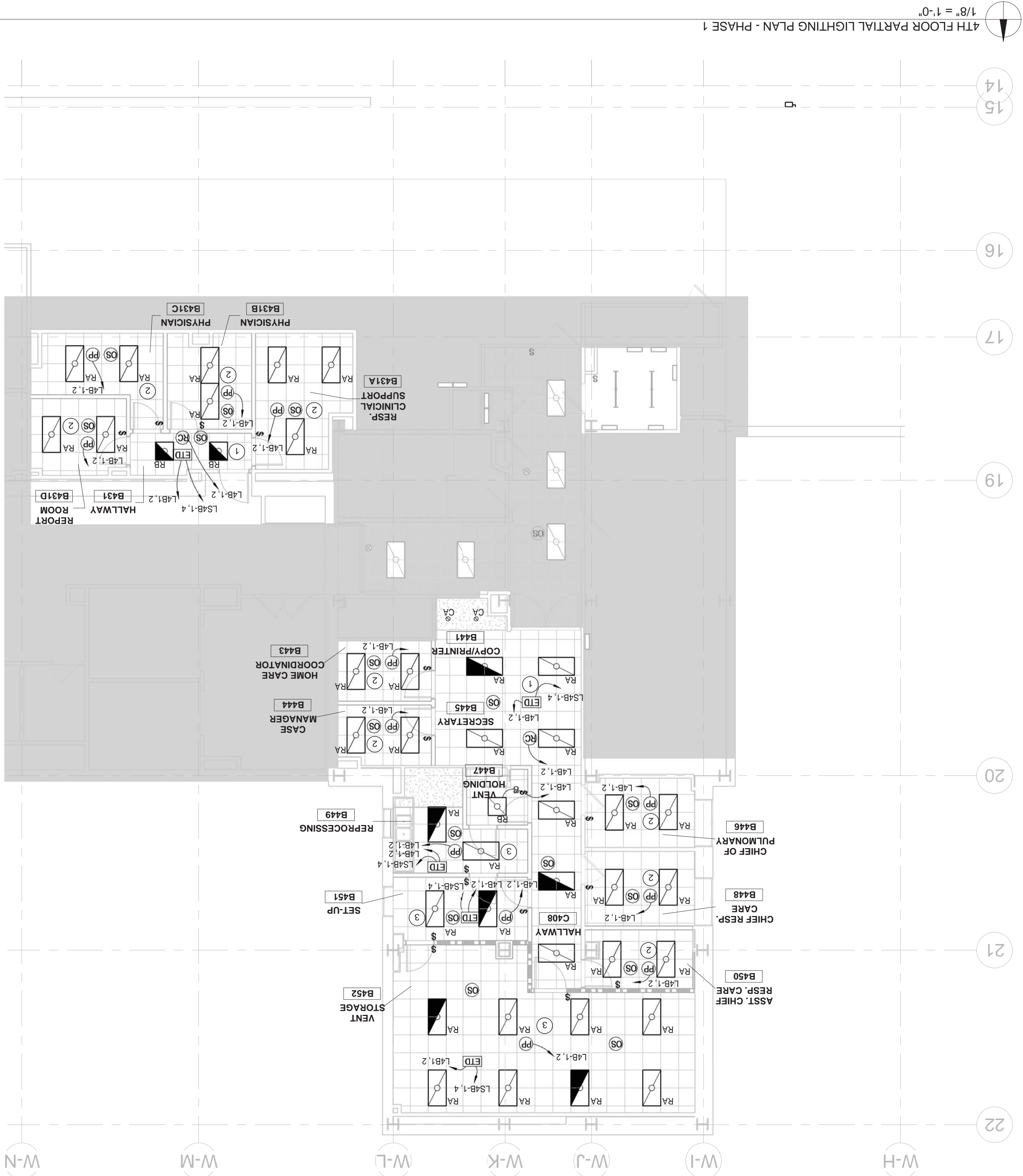
1. SUB-CONTRACTORS ARE TO COORDINATE WORK WITH ALL OTHER TRADES. CONFIRMED BETWEEN NOTES, DETAILS, SPECIFICATIONS, ETC., SHALL BE VERIFIED WITH THE ARCHITECT/ENGINEER OR THE STRICTEST PROVISIONS SHALL GOVERN.
2. DETAILS OF CONSTRUCTION NOT FULLY SHOWN SHALL BE OF THE SAME NATURE AS SHOWN FOR SIMILAR CONDITIONS. ANY UNCLARIFIED CONDITIONS SHALL BE VERIFIED WITH ARCHITECT/ENGINEER PRIOR TO CONSTRUCTION OF THAT AREA.
3. DISCREPANCIES SHALL BE VERIFIED WITH ARCHITECT.
4. ALL DIMENSIONS TIED TO EXISTING CONSTRUCTION IS TO FINISHED FACE. ALL DIMENSIONS NOT TIED TO EXISTING CONSTRUCTION ARE TO FACE OF STUD UNLESS NOTED OTHERWISE.
5. ALL EXISTING CONDITIONS AND ALL RELATED DIMENSIONS INDICATED IN THE CONTACT DOCUMENTS SHALL BE FIELD VERIFIED PRIOR TO FABRICATION, ERECTION, AND/OR CONSTRUCTION.
6. CONSTRUCTION MANAGER (CM) GENERAL CONTRACTOR (GC) TO REVIEW ENTIRE SET OF CONSTRUCTION DOCUMENTS (DRAWINGS & SPECIFICATIONS) AND SHALL COORDINATE WORK BETWEEN ALL TRADES. IF CONFLICTS ARISE DUE TO COORDINATION OF TRADES, CM/GC IS TO VERIFY CONFLICT WITH ARCHITECT/ENGINEER PRIOR TO CONSTRUCTION/INSTALLATION OF CONFLICTING ITEMS.
7. REMOVAL OR PATCHING SHALL BE REQUIRED IN CONJUNCTION WITH THE NEW WORK AND THE DEMOLITION WORK IN THE DRAWINGS.
8. PATCH ALL EXPOSED INTERIOR AND EXTERIOR WALLS WHERE ATTACHED OR IMBEDDED ITEMS WERE REMOVED.
9. THE CONTRACTOR SHALL BE RESPONSIBLE FOR THE PREPARATION OF THE FLOORS, WALLS, AND CEILINGS FOR NEW FINISHES.
10. REMOVE ADHESIVES WORK LEFT FROM THE REMOVAL OF EXISTING FLOOR COVERING AND PREP FLOOR W/CONCRETE (OR FLOORTONE) AS NECESSARY TO ACCOMMODATE NEW FLOOR COVERINGS.
11. U.O. PATCH AND PREPARE FLOOR W/CONCRETE (OR FLOORTONE) FLUSH WITH ADJACENT FLOOR SURFACE. FILL ANY SLOPING OR RECESSED AREAS LEVEL TO TYPICAL FINISH FLOOR ELEVATION TO ACCOMMODATE NEW FLOOR COVERINGS.
12. FILL-IN EXISTING CHASE OPENINGS, PENETRATIONS IN THE FLOOR AND CEILING DECK, RE-LEVELING OF NEW CONSTRUCTION TO MATCH EXISTING. REFER TO DRAWINGS FOR DETAILS.
13. WHEN REMOVING DEBRIS FROM CONSTRUCTION AREA W/RE OF WHEELS BEFORE LEAVING CONSTRUCTION AREA AND USE WET RAGS OVER DUMPS/STOPS TO REDUCE DUST.
14. THE OWNER RESERVES THE RIGHT TO HALT CONSTRUCTION ACTIVITY AT ANY TIME DUE TO NOISE AND VIBRATION WHICH MIGHT EFFECT THE OWNERS' ONGOING USE OF THE FACILITY.
15. CONTRACTOR SHALL REQUEST ALL CEILING SYSTEM AND PATCH FINISHES AT FLOOR LEVEL AND ABOVE WHERE WORK IMPACTS EXISTING ASSEMBLIES. FINISH/PAINT SURFACES TO MATCH EXISTING FINISH.
16. COORDINATE LOCATION OF ALL RECESSED OR IMBEDDED ITEMS SO AS NOT TO INTERFERE WITH OTHER TRADES WORK.
17. MAINTAIN WALL FIRE RATING BEHIND RECESSED ACCESSORIES & EQUIPMENT. ADDITION OF OPENINGS, PENETRATIONS OR EMBEDEDMENTS IN THE FIELD SHALL BE FIRST VERIFIED WITH ARCHITECT / ENGINEER.
18. PROVIDE RECORE OR VINYL ISOLATION MATERIAL BETWEEN DISMISSED METALS THAT ARE IN CONTACT WITH ONE ANOTHER, TYPICAL.
19. PATCH & REPAIR ALL MAJOR & MINOR BLEMISHES AS REQ'D. DUE TO DEMOLITION WORK. MATCH ADJACENT MATERIAL & COLOR.
20. PROVIDE SOUND, CONTINUOUS BLOCKING IN WALL AT ALL LOCATIONS WHERE ALL MILLWORK, PLUMBING FIXTURES, EQUIP., ETC. ATTACH TO WALL.
21. WHERE DRYWALL ABUTS DISMISSED MATERIALS, USE METAL DRYWALL EDGE BEAD AND SEALANT WITH BACKER ROD.
22. ALL HEADERS ABOVE OPENINGS, DOORS & BORGOWED LITES IN NON-LOAD BEARING INTERIOR METAL STUD WALLS SHALL BE (2) 8" 18 GA. JOISTS (UNLESS OTHERWISE NOTED).
23. WHERE RECESSED EQUIPMENT IS INSTALLED IN UNGREEN SURFACED MATERIAL, LAY FLUSH AND EVEN. COORDINATE WITH EQUIPMENT MANUFACTURER.
24. ALL BLOCKING SHALL BE FIRE RETARDANT TREATED WOOD OR MADE OF NON-COMBUSTIBLE MATERIAL.

[illegible]

KEYED NOTES:

1. CONNECT TO BMS AND PROGRAM TO BE HALF OUTPUT WHEN UNOCCUPIED WITH OVERRIDE TO FULL OUTPUT WHEN OCCUPIED VIA OCCUPANCY SENSORS. REFER TO LIGHTING CONTROLS WIRING DIAGRAMS 2/E-502 AND 6/E-502.
2. CONNECT LIGHTING CONTROLS PER DETAIL 3/E-502.
3. CONNECT LIGHTING CONTROLS PER DETAIL 4/E-502.

LIGHT FIXTURE SCHEDULE



3

4TH FLOOR
1/8" = 1'-0"

 elevating human achievement www.c2ae.com	DRAWING TITLE 4TH FLOOR LIGHTING PLAN - PHASE 1		PROJECT NAME EXPANDED ENDO. & PULMONARY CLINICAL SPACES		DRAWING NUMBER E-240
	DATE: 07-01-2016	BUILDING NUMBER As indicated	FLOOR SCALE 1/8" = 1'-0"	CADD PROJECT NUMBER 150008	
REVISIONS		PROJECT NUMBER 006-15-101		PROJECT NAME EXPANDED ENDOSCOPY AND PULMONARY CLINICAL SPACES	

DEPARTMENT OF
VETERANS AFFAIRS

[illegible]

ROOM NAMES - PHASE 4	NAME	#
	ECB/BN/ONS PROCEEDURE ROOM - 1	0713
	ENDOSCOPY PROCEEDURE ROOM - 2	0717
	ENDOSCOPY PROCEEDURE ROOM - 3	0719
	ECB/BN/ONS PROCEEDURE ROOM - 2	0718
	DECON	0715
	SCOPE STORAGE	0750
	HLD	0758
	DECON	0759
	SCOPE STORAGE	0762
	HLD	0768
	DECON	0769
	SCOPE STORAGE	0770
	ANTE ROOM	0771
	ANTE ROOM	0775
	ANTE ROOM	0781
	SCOPE STORAGE	0782
	SKS	0785
	ST. TOLLET	0787
	II	0792
	CORRIDOR	0799
	CORRIDOR	0799
	CORRIDOR	0799

7TH FLOOR PARTIAL LIGHTING PLAN - PHASE 2

7TH FLOOR PARTIAL LIGHTING PLAN - PHASE 4
1/8" = 1'-0"

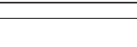
7TH FLOOR PARTIAL LIGHTING PLAN - PHASE 3
1/8" = 1'-0"



1. ROTATE EXISTING

- | | |
|---------------------|--|
| 7. | REFERS TO DETAILS 2E-502 AND 6E-502 FOR CORRIDOR LIGHTING CONTROL WIRING. |
| 6. | CONNECT TO EXISTING CORRIDOR C71-23 EMERGENCY LIGHT FIXTURE AND CONTROL. |
| 5. | CONNECT TO EXISTING CORRIDOR C71-23 NORMAL LIGHT FIXTURE CIRCUIT AND CONTROL. |
| 4. | CONNECT TO EXISTING CORRIDOR C71-28 ROOM CONTROLLER, CIRCUIT AND CONTROL. |
| 3. | CONNECT TO EXISTING CORRIDOR C71-28 EMERGENCY LIGHT FIXTURE AND CONTROL. |
| 2. | CONNECT TO EXISTING CORRIDOR C71-28 NORMAL LIGHT FIXTURE CIRCUIT AND CONTROL. |
| 1. | REFERS TO DETAIL 3E-302 FOR OVERHEAD LIGHTING CONTROL WIRING. |
| KEYED NOTES: | |
| 1. | ROUTING EXISTING LIGHT FIXTURES IN GRID AS SHOWN, MAINTAIN ALL EXISTING LIGHTING CONTROL WIRING. |



 elevating human achievement www.c2ae.com	PROJECT: EXPANDED ENDO & PULMONARY CLINICAL SPACES DRAWING NUMBER: E-270.B		DEPARTMENT OF VETERANS AFFAIRS
	DATE: 07-01-2016 AS INDICATED	BUILDING NUMBER: As indicated PLOT SCALE: 150008	
REVISIONS:	7TH FLOOR LIGHTING PLAN - PHASE 4A, 4B 1A PROJECT NAME: EXPANDED ENDOSCOPY AND PULMONARY CLINICAL SPACES 1A PROJECT NUMBER: 006-15-101 1A PROJECT NUMBER: 006-15-101		CHAP PROJECT NUMBER: 150008



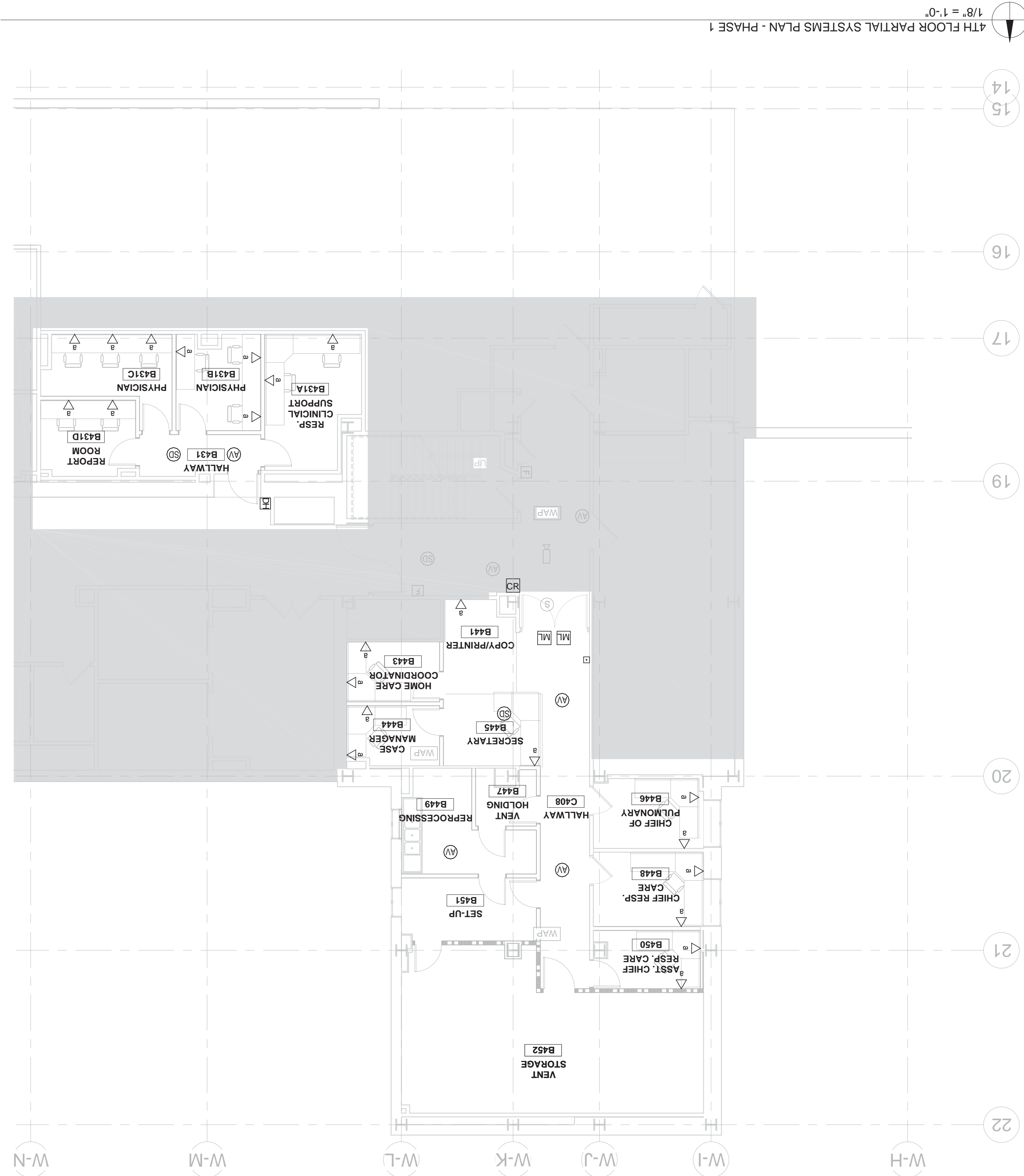
c2ae
elevating human achievement
www.c2ae.com

REVISIONS:

[illegible]

7TH FLOOR POWER PLAN - PHASES 4A, 4B		DRAWING TITLE:	
PROJECT: EXPANDED ENDO. & PULMONARY CLINICAL SPACES		DATE: 07-01-2016	
BUILDING NUMBER:		As indicated	
PLOT SCALE:		As indicated	

EXPANDED ENDOSCOPY AND PULMONARY CLINICAL SPACES	VA PROJECT NUMBER: 506-15-101	CZAE PROJECT NUMBER: 150008	DRAWING NUMBER: E-370.B
---	----------------------------------	--------------------------------	----------------------------



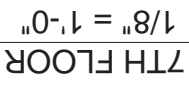
REVISIONS:

[illegible]

DATE: 17-01-2016	BUILDING NUMBER:	PLOT SCALE: 1/8" = 1'-0"
------------------	------------------	--------------------------

IIA PROJECT NAME: EXPANDED ENDOSCOPY AND PULMONARY CLINICAL SPACES	IIA PROJECT NUMBER: 506-15-101	IIA PROJECT NUMBER: 150008
--	-----------------------------------	-------------------------------

DEPARTMENT OF
VETERANS AFFAIRS



33



44

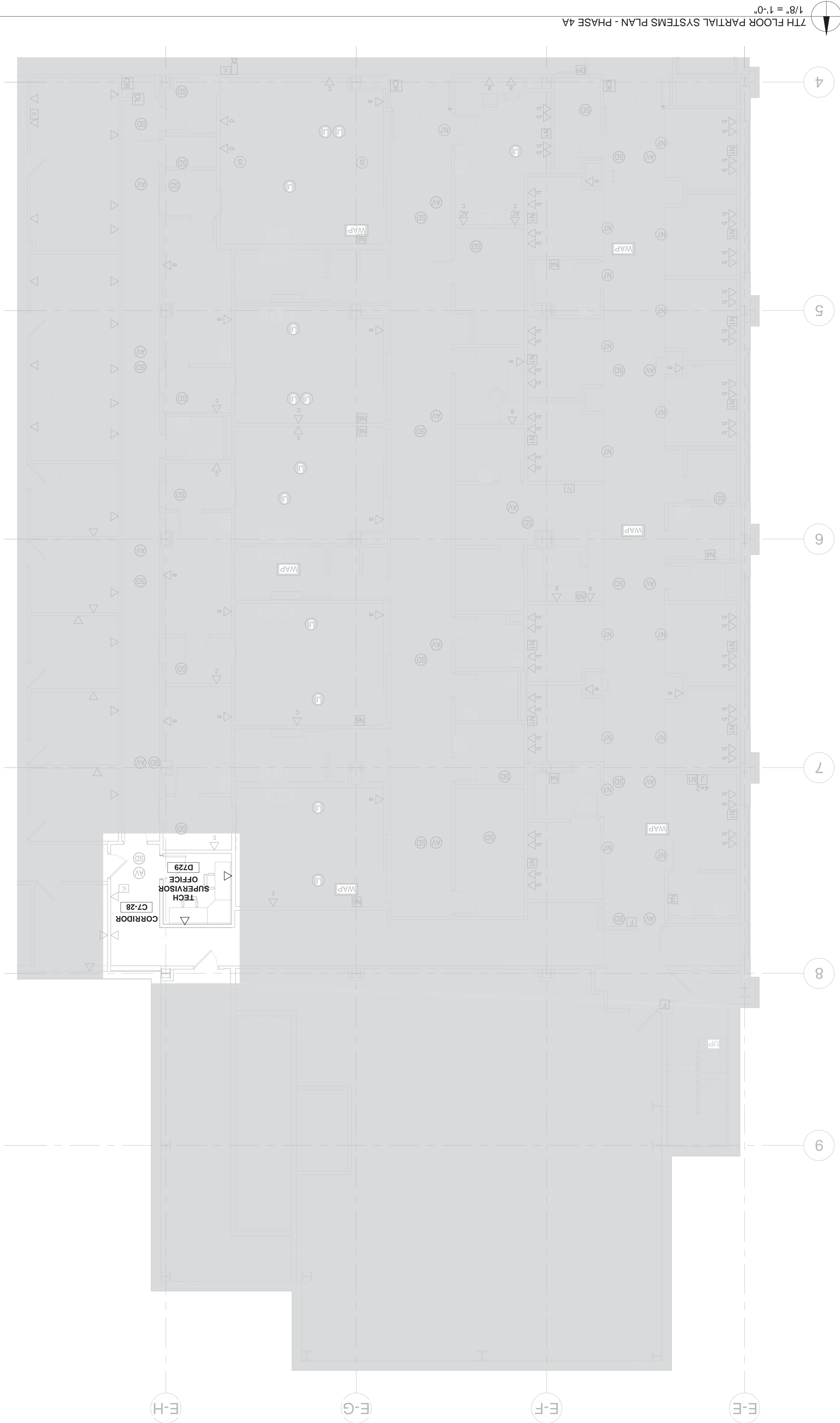


E 2



KEYED NOTES: ○

1. PROVIDE TEMPORARY FIRE ALARM INITIATING AND NOTIFICATION DEVICES WITHIN 15'-0" OF ENDS OF CORRIDOR AND NO GREATER THAN 30'-0" BETWEEN SETS OF DEVICES, VERIFY THAT NOTIFICATION DEVICES CAN BE SEEN AT ANY LOCATION IN THE SPACE. CONNECT TO NEAREST FIRE ALARM SYSTEM PANEL.



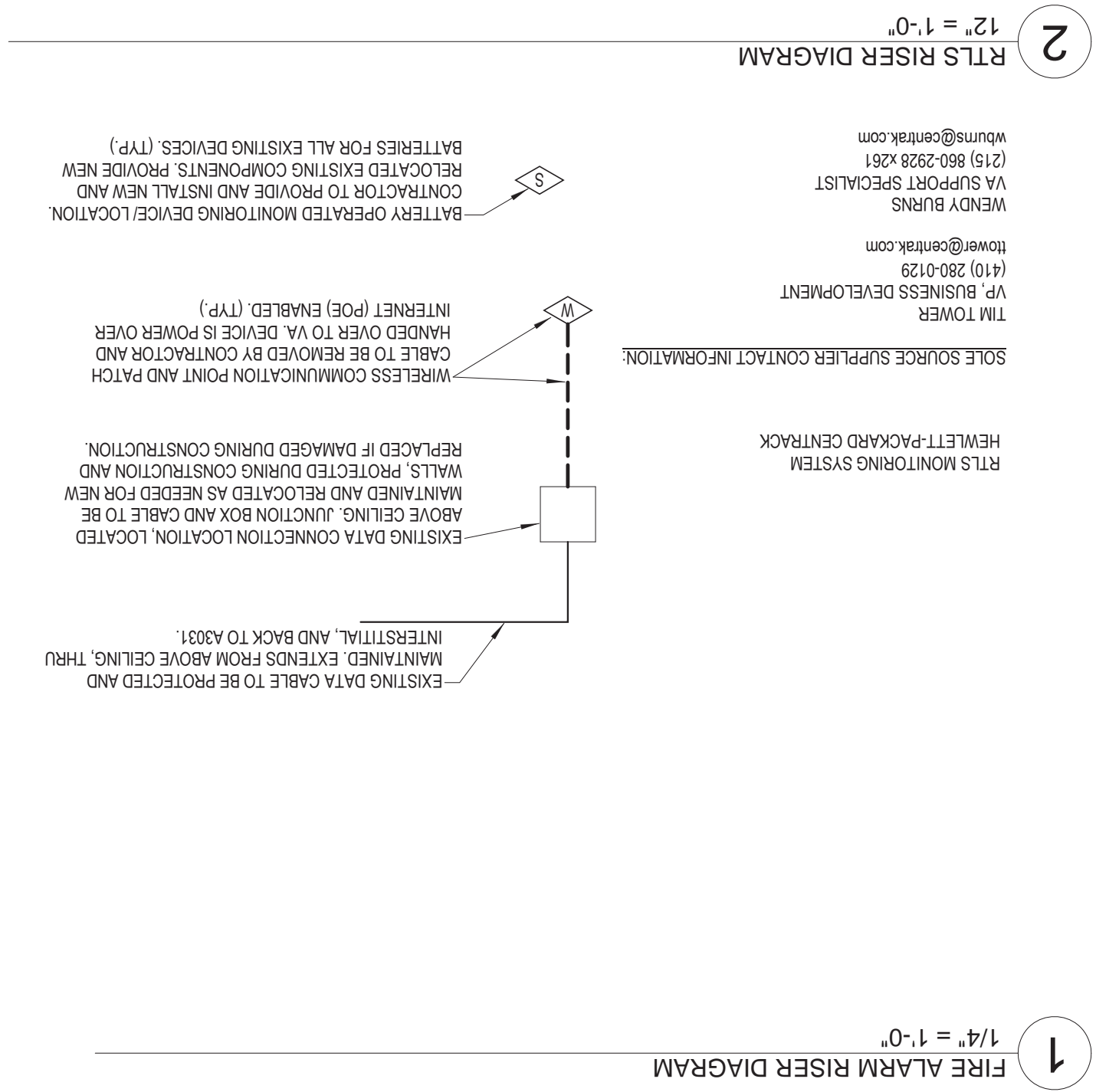
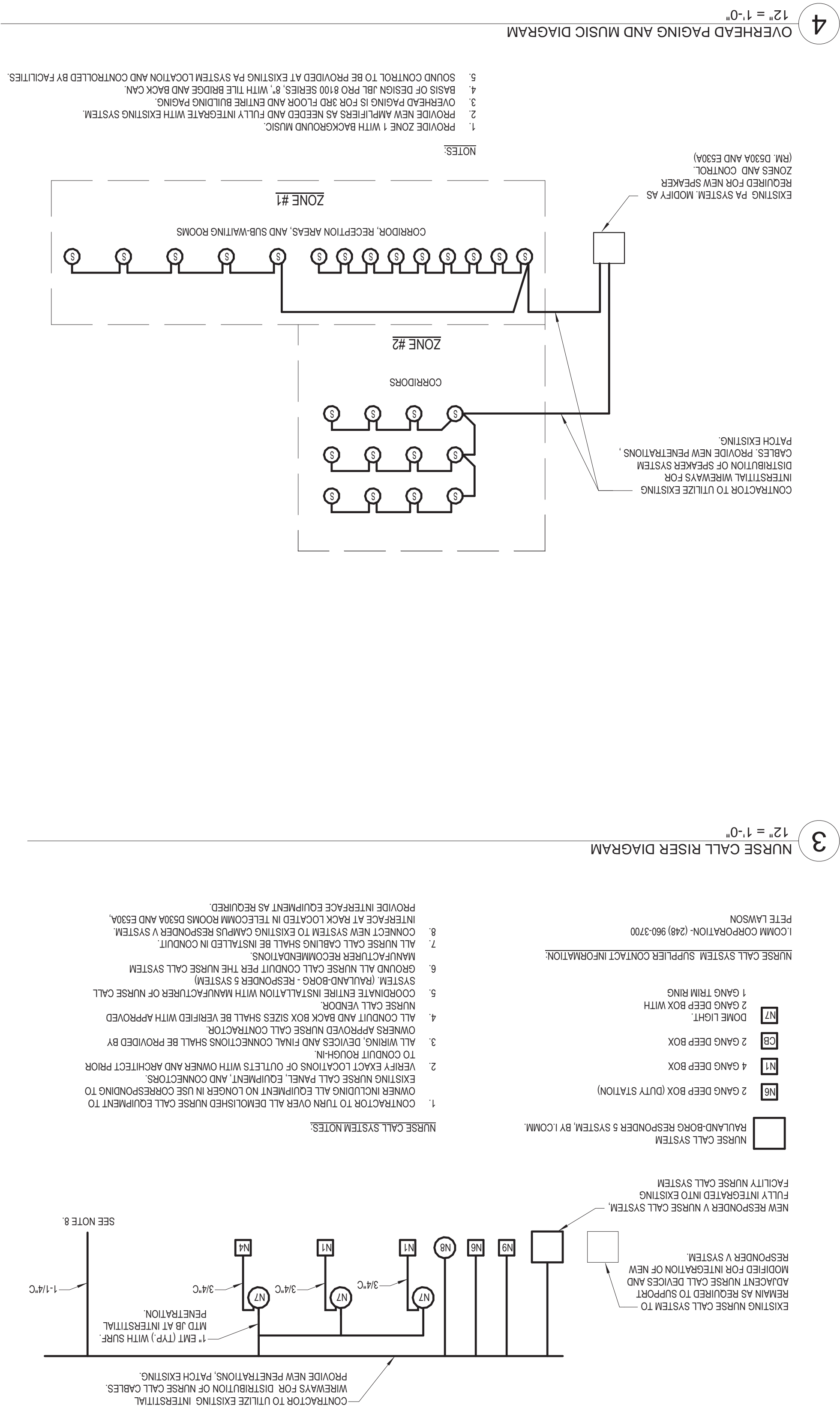
REVISIONS

PROJECT	EXPANDED ENDO. & PULMONARY CLINICAL SPACES
DATE	07-01-2016
BUILDING NUMBER	1/8" = 1'-0"
PROJECT NUMBER	506-15-101
VA PROJECT NUMBER	EXPANDED ENDOSCOPY AND PULMONARY CLINICAL SPACES

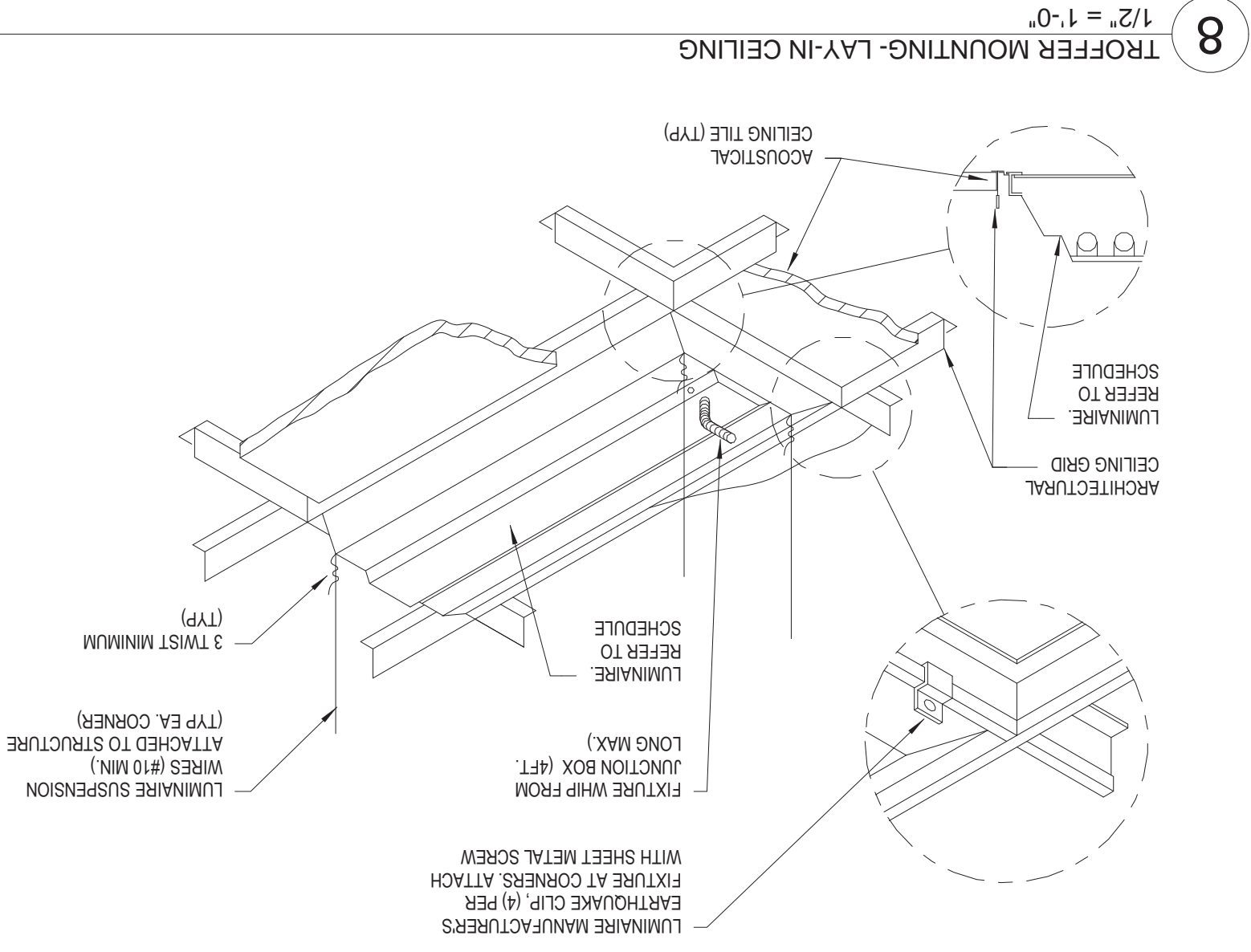
E-470.B

DEPARTMENT OF VETERANS AFFAIRS

BID DOCUMENTS

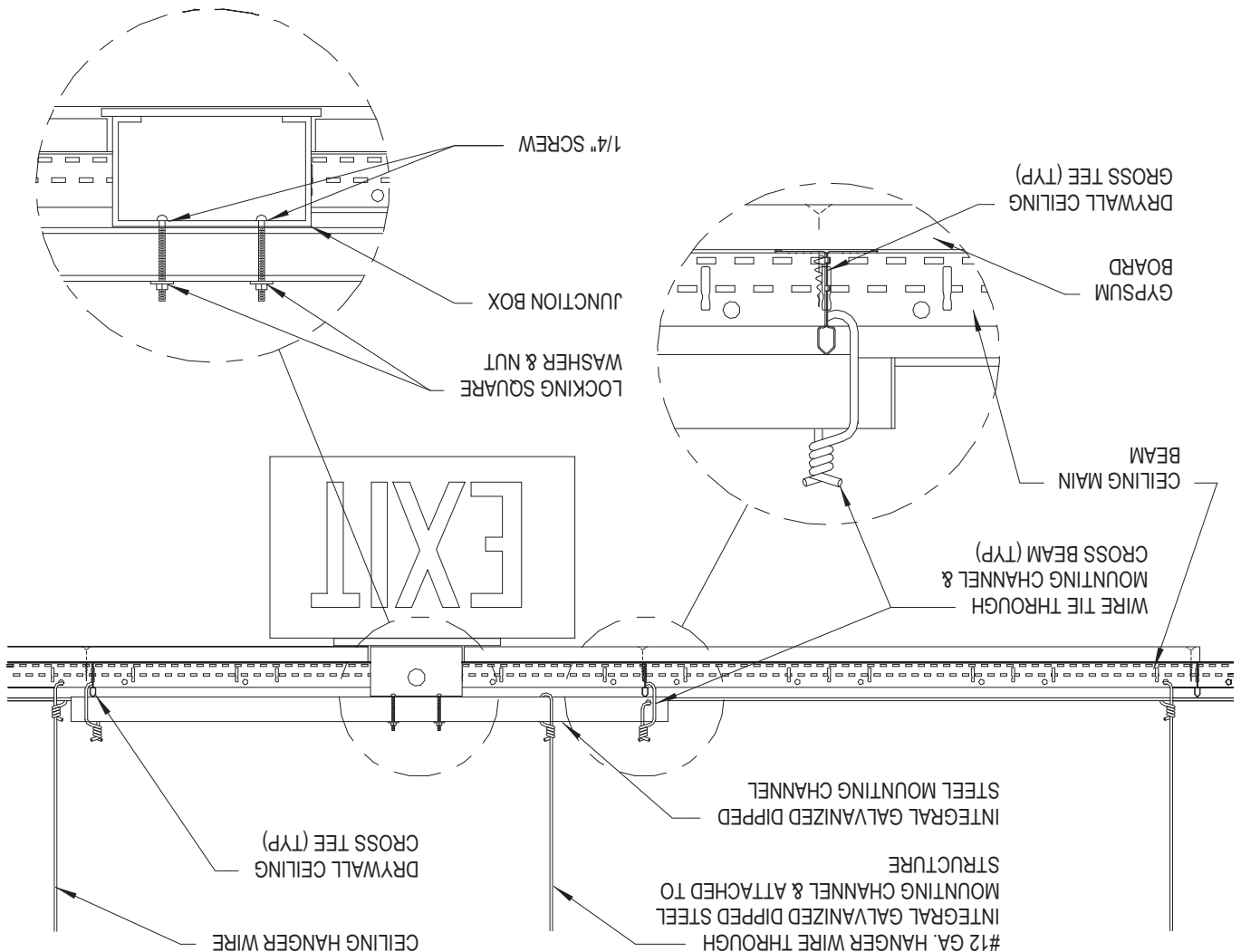


 elevating human achievement www.c2ae.com	BEYOND		PROJECT TITLE		DEPARTMENT OF VETERANS AFFAIRS
	EXPANDED ENDO & PULMONARY		EXPANDED ENDOSCOPY AND PULMONARY CLINICAL SPACES		
07-01-2016	DATE:	BUILDING NUMBER	FLOOR SCALE	CAD PROJECT NUMBER	150008
PROJECT NUMBER		EXPANDED ENDO & PULMONARY CLINICAL SPACES		E-501	



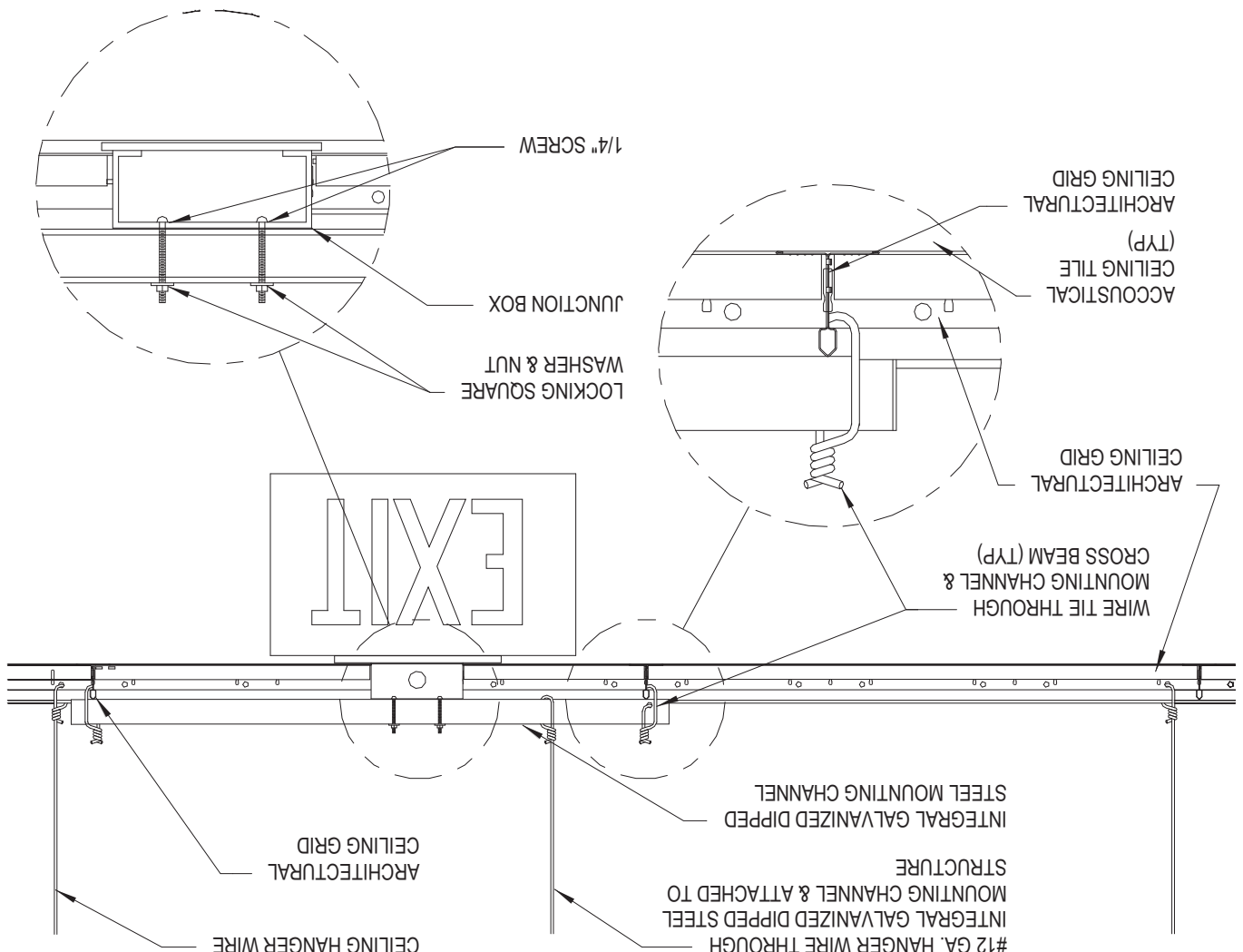
8

FER 1
1-0*



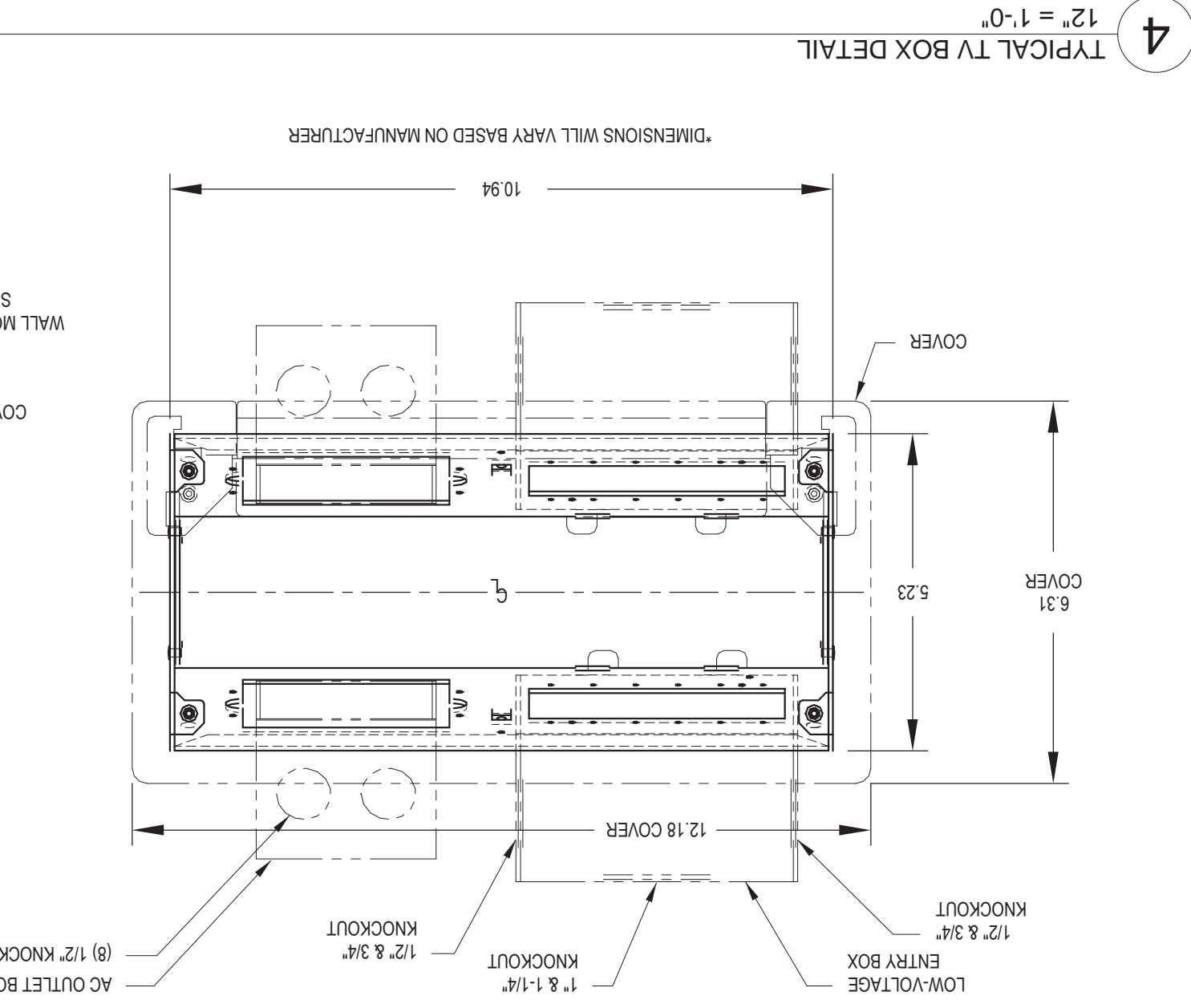
6

RIGHT



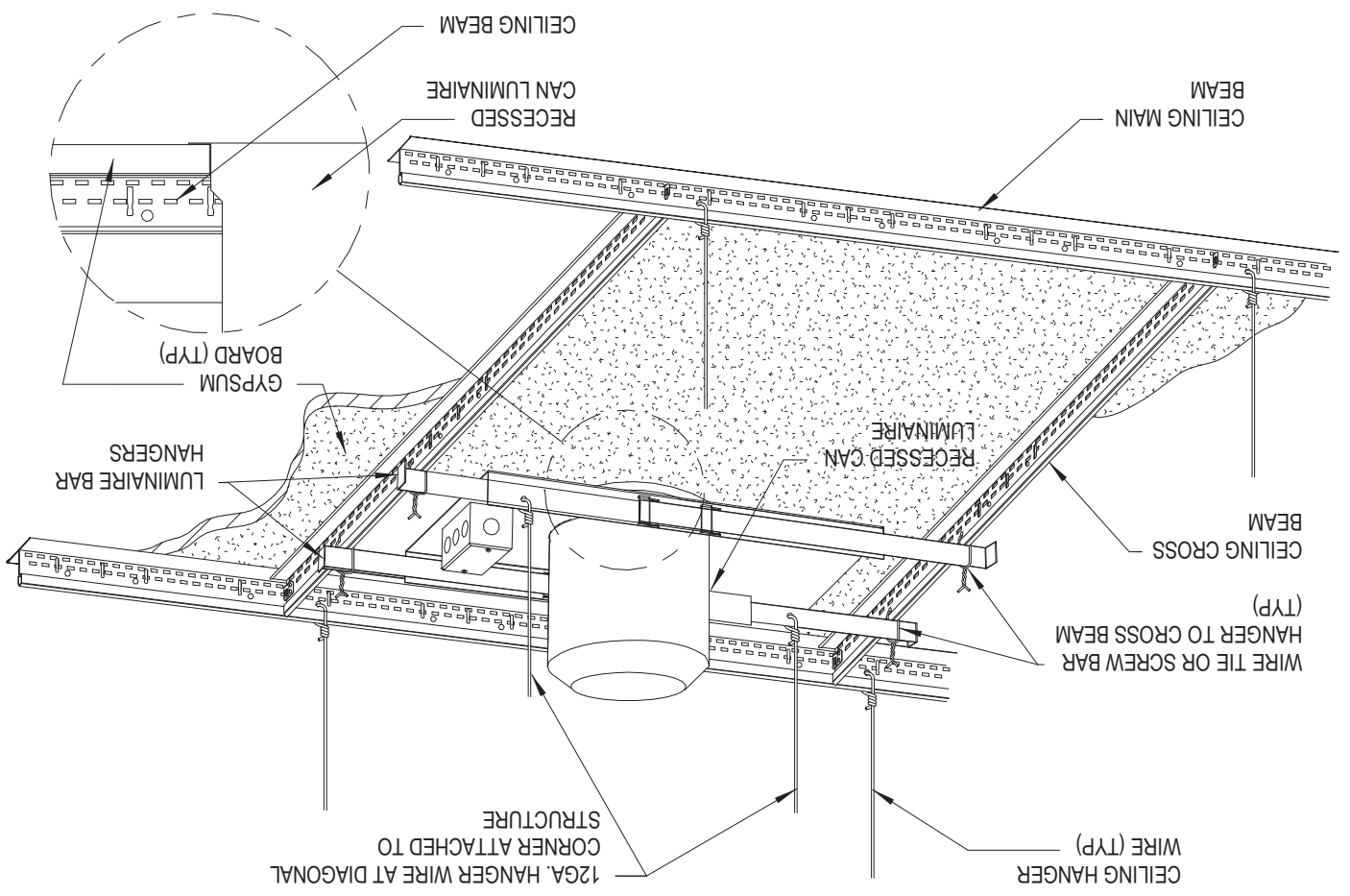
OL

1.0-1

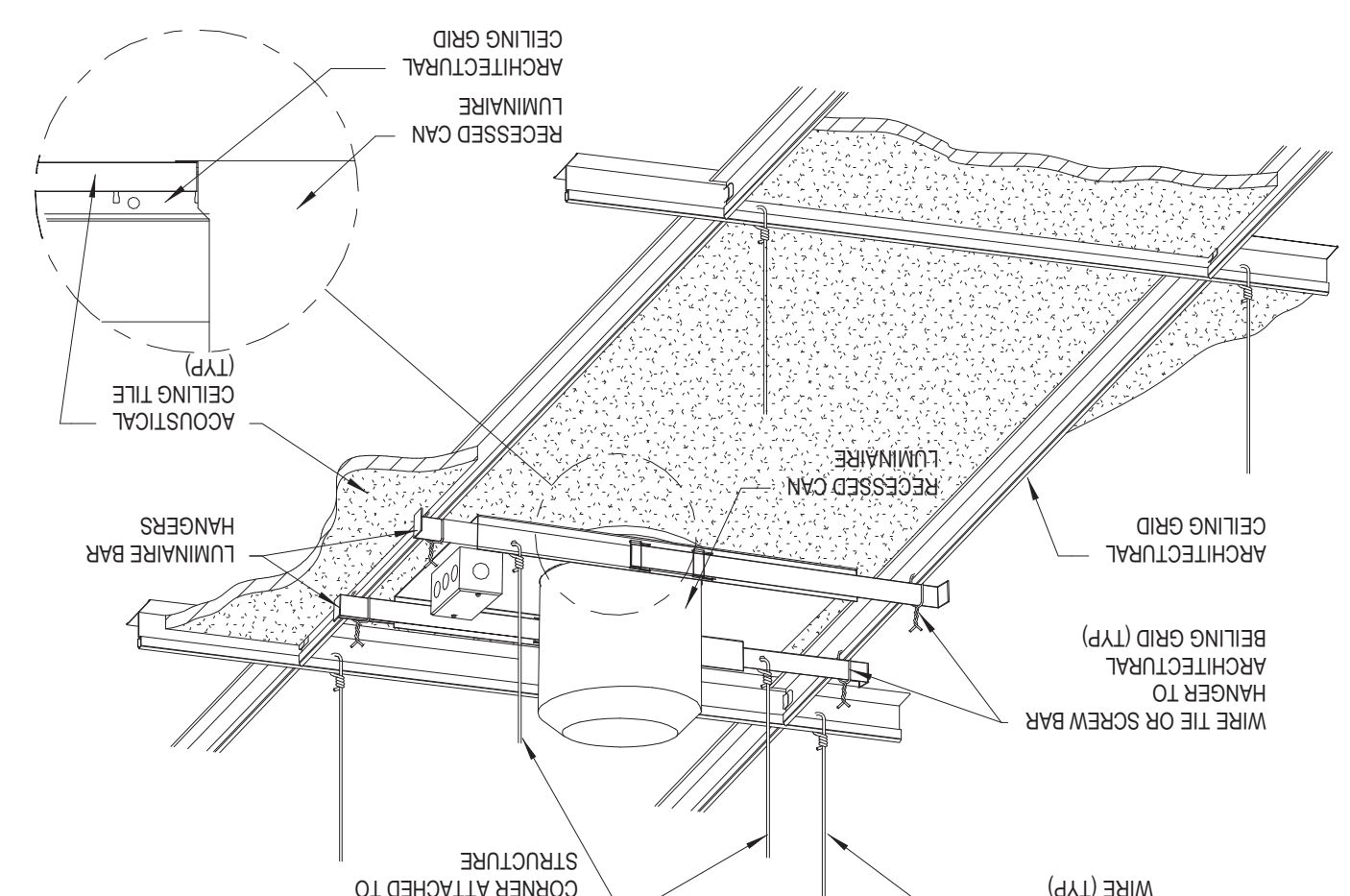


4

AL T

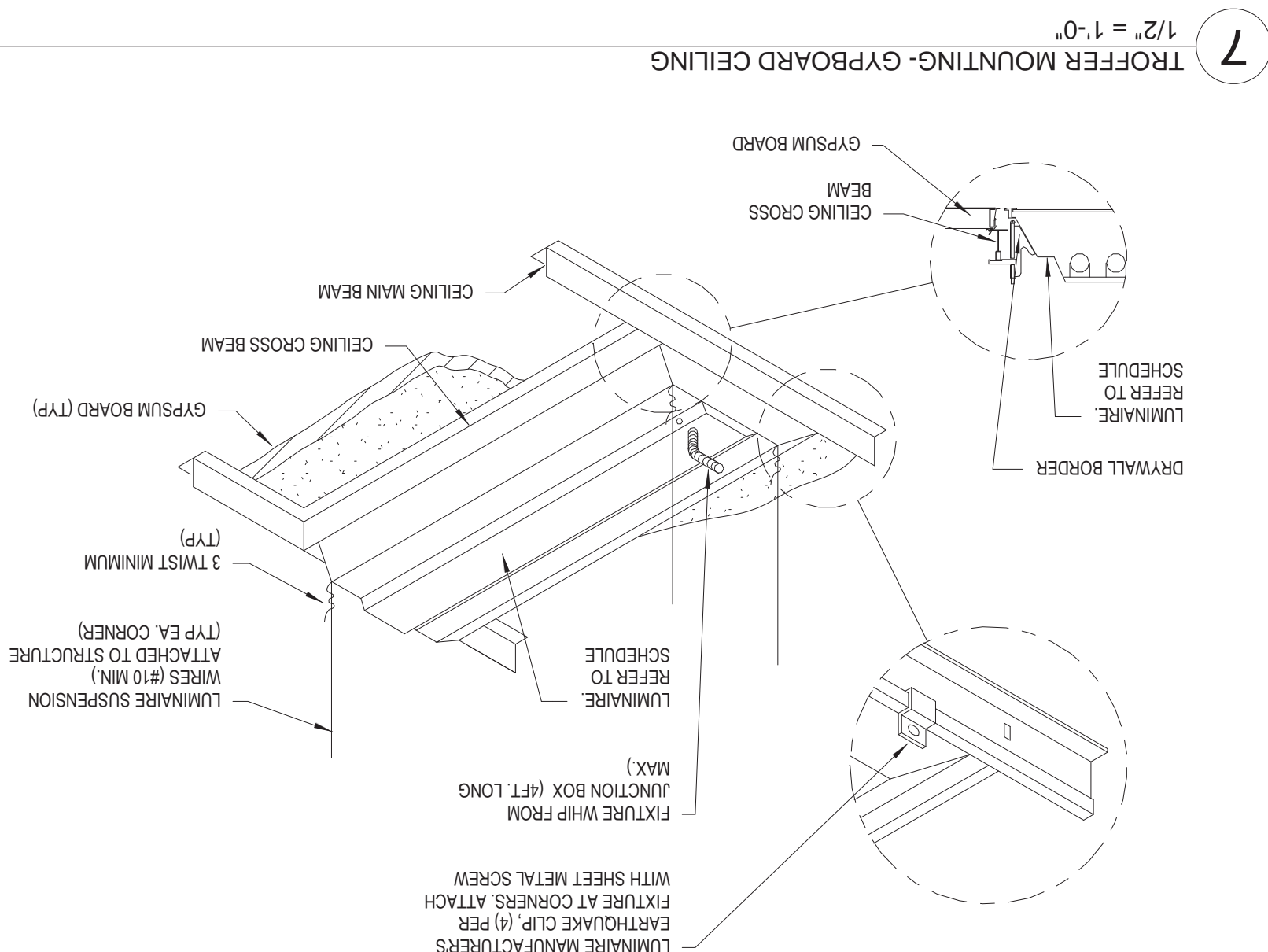


5

$$\frac{\text{ALAR}}{100} = 1.0$$


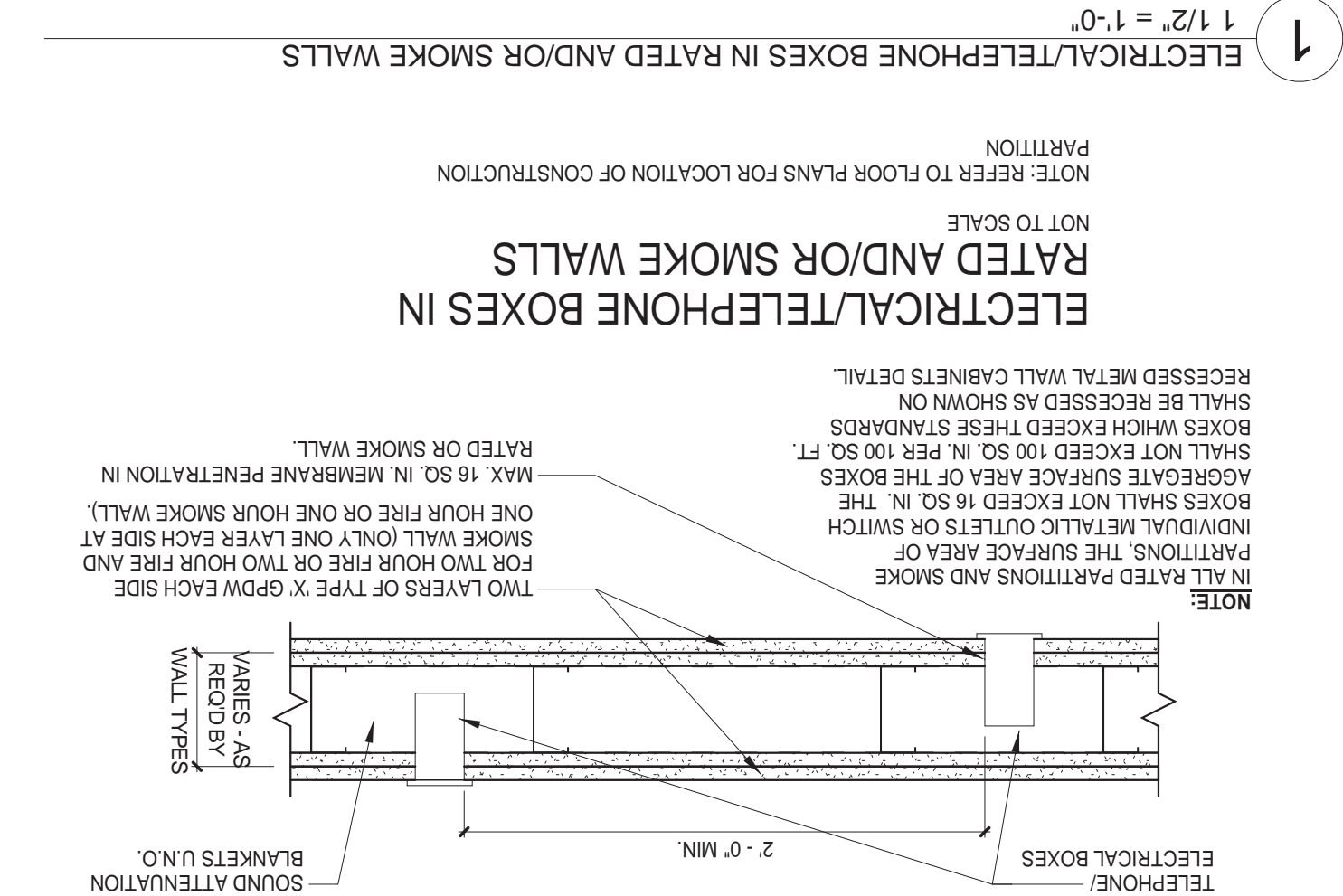
9

0.1 =



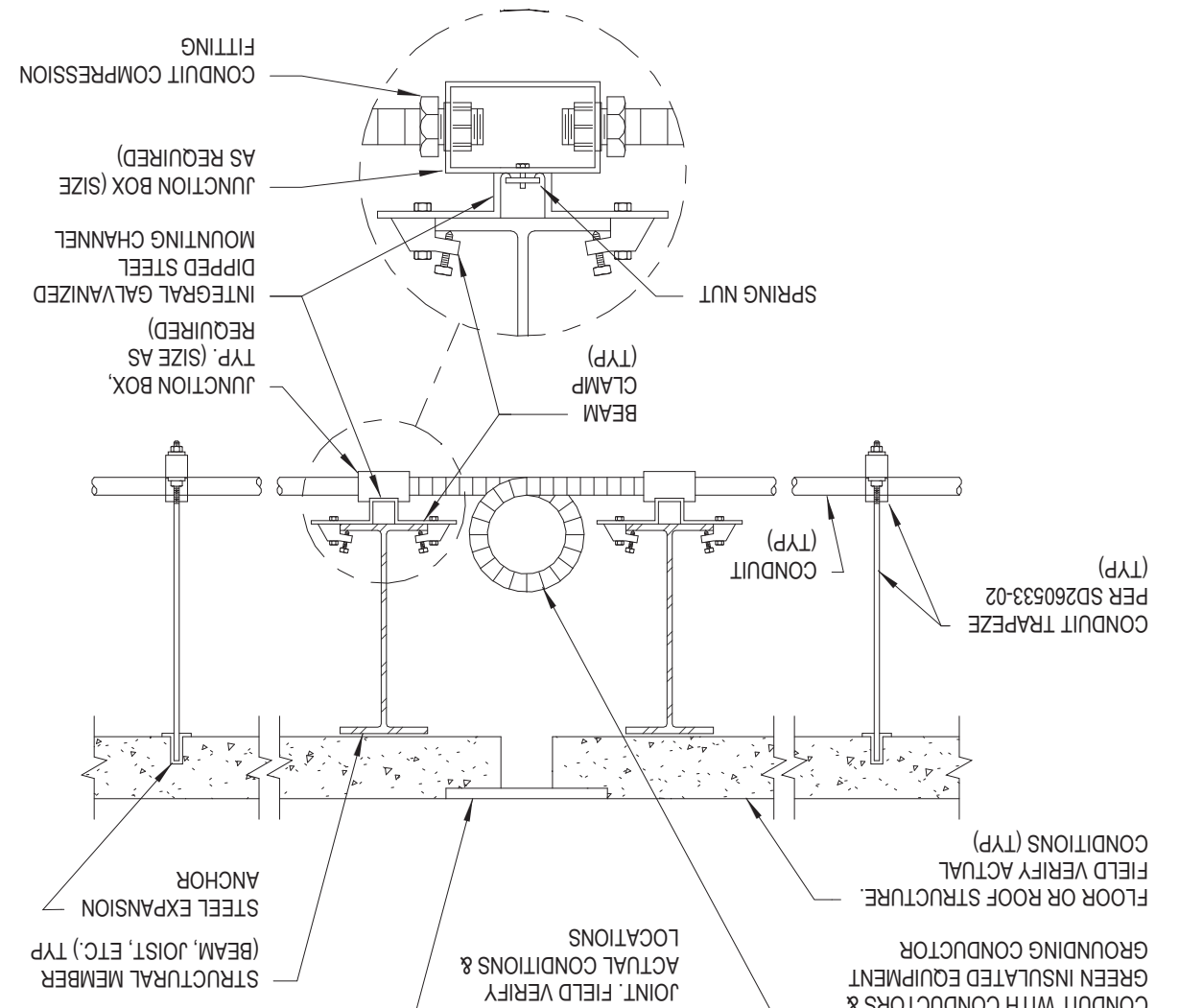
٧

1'-0"



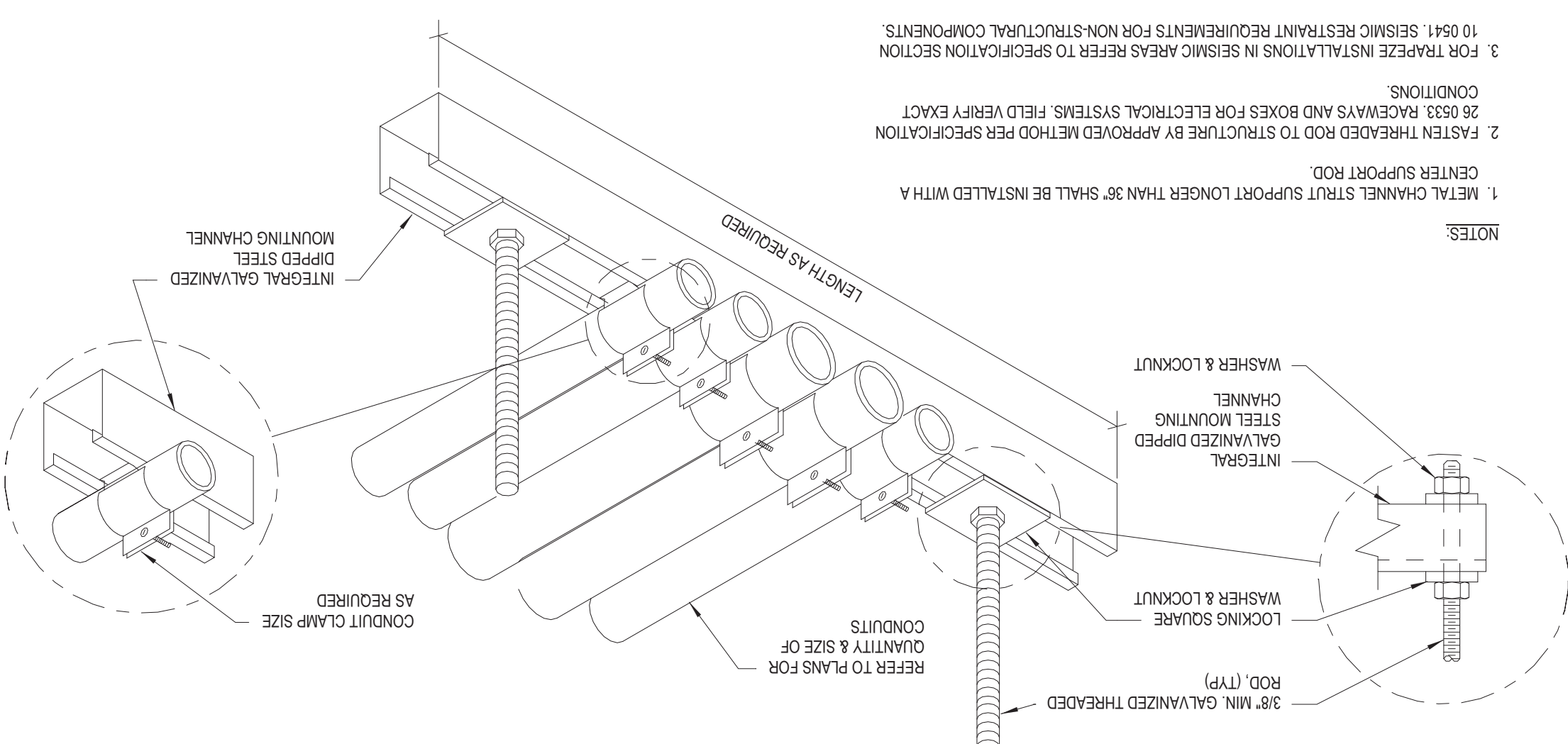
1

TRIC, = 1.4



2

UNIT 1-0



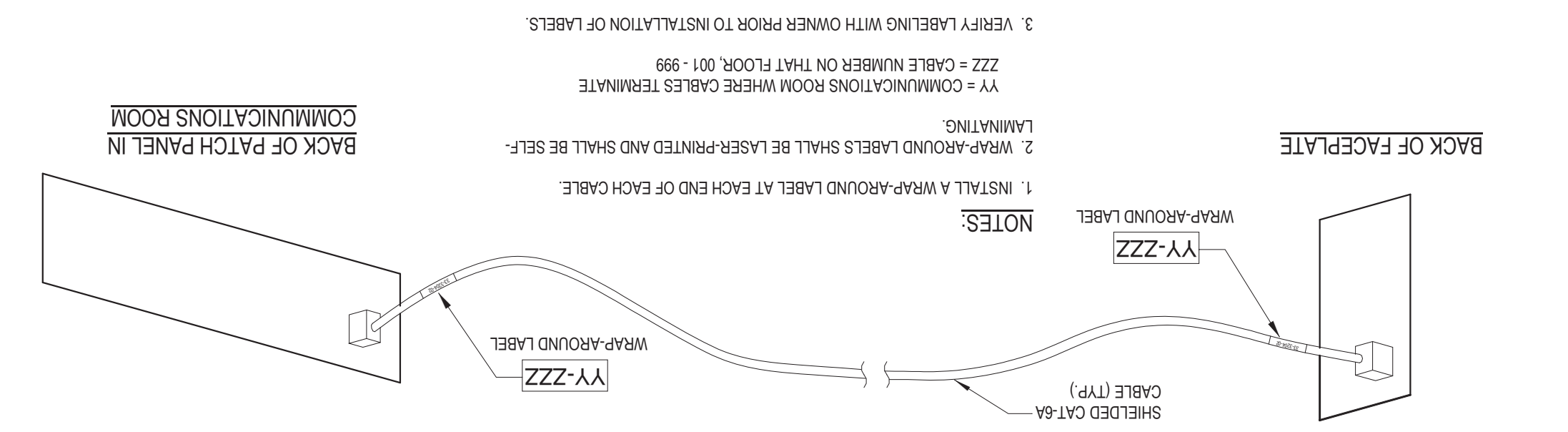
3

0.14

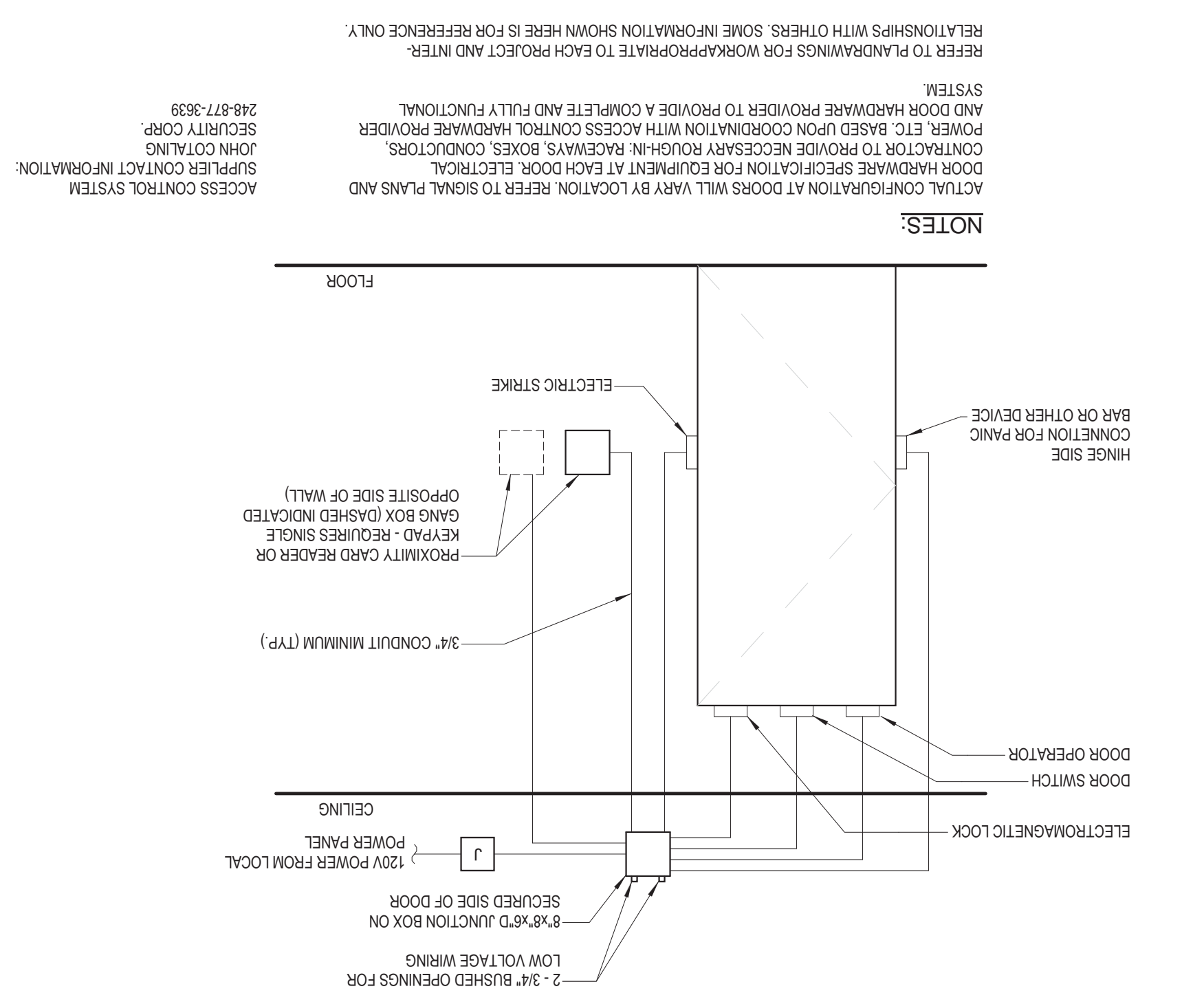
[illegible]



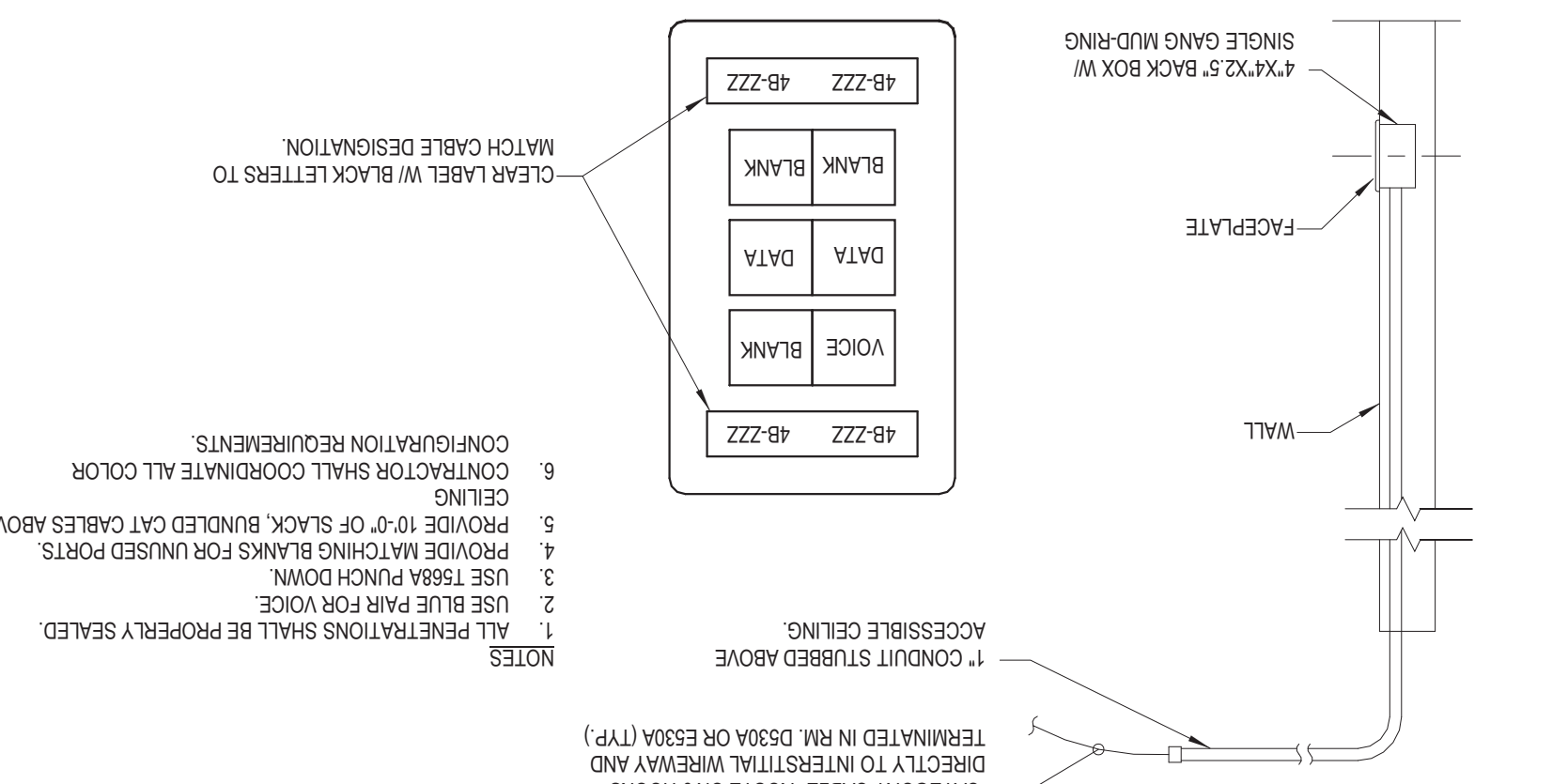
5 CABLE LABELING DETAIL
1/2" = 1'-0"



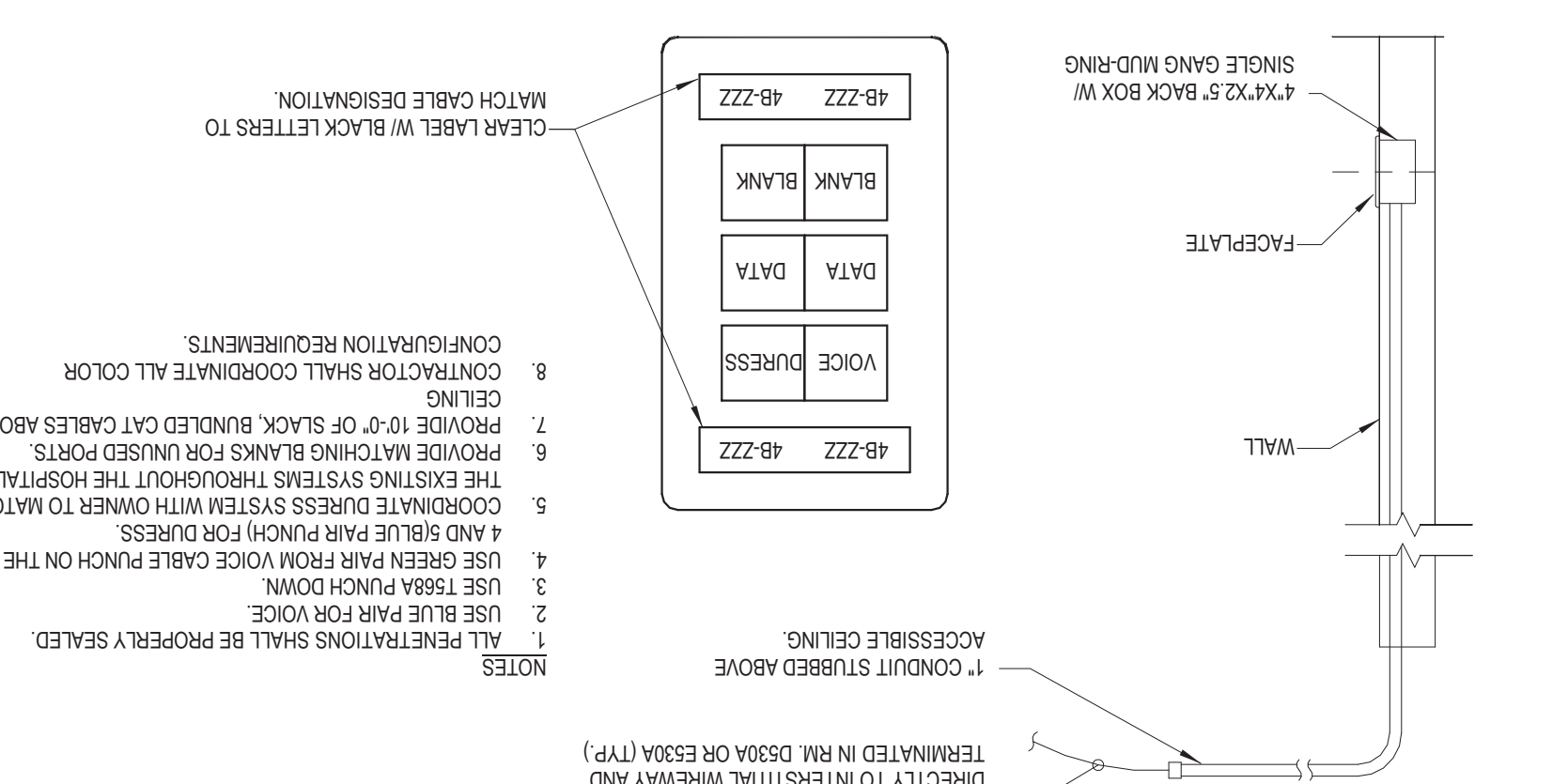
6 ACCESS CONTROL DETAIL
1/2" = 1'-0"



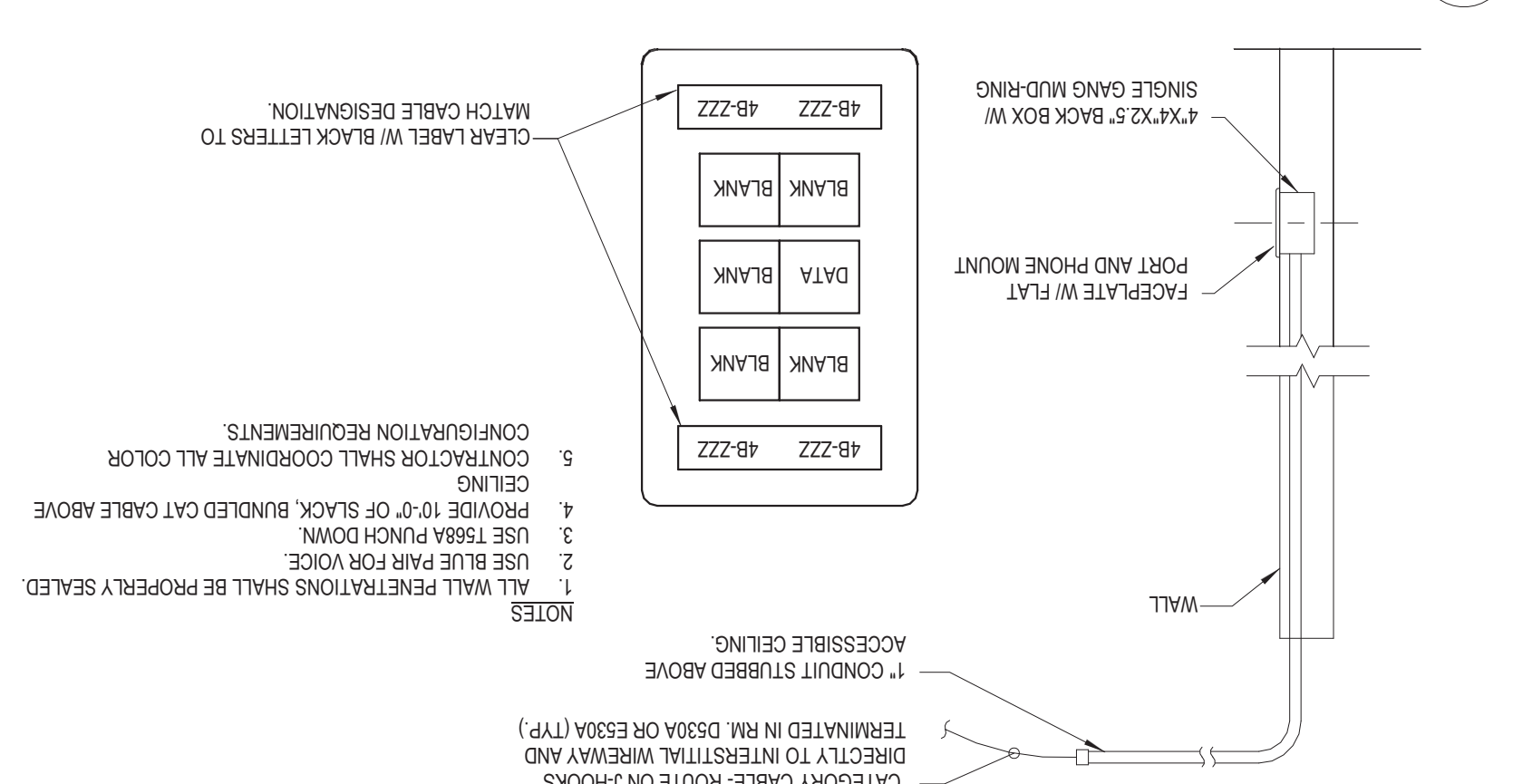
1 TYPE 'A' FACEPLATE DETAIL
1/2" = 1'-0"



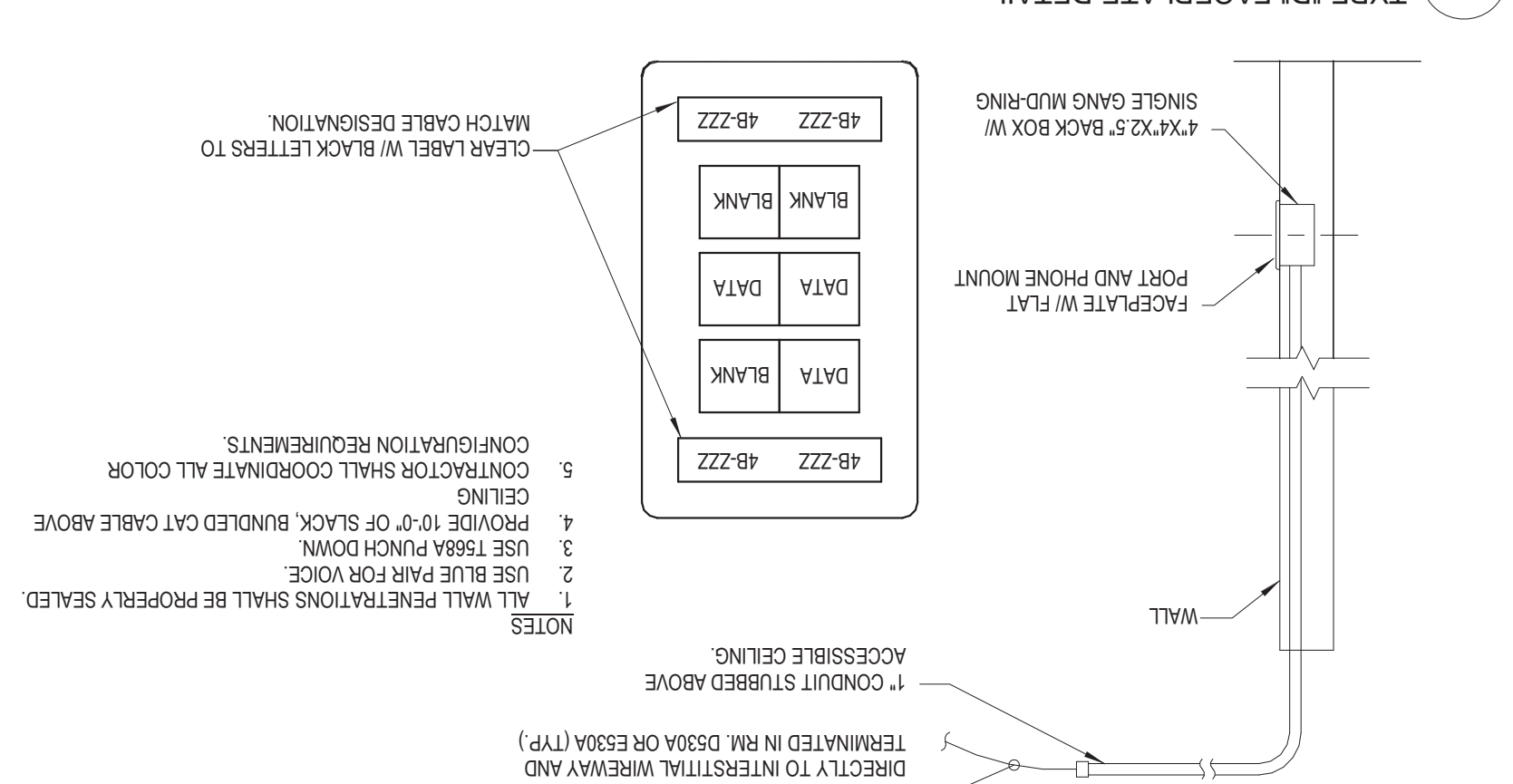
2 TYPE 'B' FACEPLATE DETAIL
1/2" = 1'-0"



3 TYPE 'C' FACEPLATE DETAIL
1/2" = 1'-0"



4 TYPE 'D' FACEPLATE DETAIL
1/2" = 1'-0"



REVISIONS

DATE	BUILDING NUMBER	PROJECT
07-01-2016		EXPANDED ENDO. & PULMONARY CLINICAL SPACES

DRAWING TITLE
ELECTRICAL DETAILS

PROJECT	EXPANDED ENDO. & PULMONARY CLINICAL SPACES
DATE	07-01-2016
BUILDING NUMBER	
PROJECT SCALE	1/2" = 1'-0"
CAD PROJECT NUMBER	150006
ISSUING NUMBER	E-602

PROJECT NUMBER	506-15-101
PROJECT NAME	EXPANDED ENDOSCOPY AND PULMONARY CLINICAL SPACES

[illegible][illegible]

LS4B-1									
Notes:									
Location: Space #12 Mounting: SURFACE Enclosure: NEMA 1									
Vols: 480/277 Wye Phases: 3 Wires: 4									
A.L.C. Rating: 35 kA Mains Rating: 225 A MCB Rating: 225 A									
Circuit Description	Tip	Poles	C (VA)	B (VA)	A (VA)	Poles	Tip	Circuit Description	Ckt
1 EXIT & LIFE SAFETY LIGHTS EAST	20 A	1	0	0	0	1	20 A	SHAFT #17 STAIRWAY LIGHTING	1
3 SPARE	20 A	1	0	281	0	1	20 A	PULLMANARY EMERGENCY...	1
5 SPARE	20 A	1	0	0	0	1	20 A	SPARE	1
7 EXIT & LIFE SAFETY LIGHTS WEST	20 A	1	0	0	0	1	20 A	SPARE	1
9 SPARE	20 A	1	0	0	0	1	20 A	SPARE	1
11 SPARE	20 A	1	0	0	0	1	20 A	SPARE	1
13 SPARE	20 A	1	0	0	0	1	20 A	SPARE	1
15 SPARE	20 A	1	0	0	0	1	20 A	SPARE	1
17 SPARE	20 A	1	0	0	0	1	20 A	SPARE	1
19 SPARE	20 A	1	0	0	0	1	20 A	SPARE	1
21 SPARE	20 A	1	0	0	0	1	20 A	SPARE	1
23 SPARE	20 A	1	0	0	0	1	20 A	SPARE	1
25 SPARE	20 A	1	0	0	0	1	20 A	SPARE	1
27 SPARE	20 A	1	0	0	0	1	20 A	SPARE	1
29 SPARE	20 A	1	0	0	0	1	20 A	SPARE	1
31 SPARE	20 A	1	0	0	0	1	20 A	SPARE	1
33 SPARE	20 A	1	0	0	0	1	20 A	SPARE	1
35 SPARE	20 A	1	0	0	0	1	20 A	SPARE	1
37 SPARE	20 A	1	0	0	0	1	20 A	SPARE	1
39 SPARE	20 A	1	0	0	0	1	20 A	SPARE	1
41 SPARE	20 A	1	0	0	0	1	20 A	SPARE	1
Total Amps: 0 A Total Load: 0.0 VA Demand Factor: 281.2 VA Estimated Demand: 0.0 VA									
Legend: Load Classification Lighting Total Com. Load: 281.2 VA Total Com. Current: 0 A Total Est. Demand: 0 A									

[illegible][illegible][illegible]BID DOCUMENTS



Notes:									
Load Classification									
Other									
Receptacle									
Total Est. Demand: 12 A									
Total Conn. Load: 4500.0 VA									
Total Est. Demand: 12 A									
Total Est. Demand: 12 A									
Notes:									
Legend:									
Total Amps:									
Total Load:									
41 EWC C7-15									
39 RECEPT 8TH FL SOUTH									
37 RECEPT 8TH FL SOUTH									
36 RECEPT C703									
34 RECEPT C703									
33 RECEPT C703									
32 RECEPT C7-32									
31 RECEPT C7-32									
29 RECEPT C7-7A									
27 RECEPT C7-7A									
25 RECEPT C716.36.38									
24 RECEPT C716.36.38									
22 RECEPT C710.11.07.7A									
15 RECEPT C710.11.07.7A									
14 RECEPT C710.11.07.7A									
12 RECEPT C710.11.07.7A									
10 RECEPT C710.11.07.7A									
8 RECEPT C710.11.07.7A									
7 RECEPT C710.11.07.7A									
6 RECEPT C710.11.07.7A									
4 RECEPT C710.11.07.7A									
3 RECEPT C710.11.07.7A									
2 RECEPT C710.11.07.7A									
Notes:									
Location: PULM. FUNCTION..									
Supply From: SURFACE									
Mains Type: MCB									
Mains Rating: 225 A									
Enclosure: NEMA 1									
Wires: 4									
Phases: 3									
Volts: 120/208 Wye									
A.L.C. Rating:									
MCB Rating: 225 A									

Notes:									
Load Classification									
Other									
Receptacle									
Total Est. Demand: 15 A									
Total Conn. Load: 5625.0 VA									
Total Est. Demand: 15 A									
Notes:									
Legend:									
Total Amps:									
Total Load:									
41 PHYS LAB 68									
39 RECEPT D715A									
37 RECEPT D715A									
36 RECEPT D715A									
35 RECEPT D715A									
34 RECEPT D715A									
33 RECEPT D715A									
32 RECEPT D715A									
31 RECEPT D715A									
29 RECEPT D715A									
27 RECEPT D715A									
25 RECEPT D715A									
24 RECEPT D715A									
22 RECEPT D715A									
21 RECEPT D715A									
20 RECEPT D715A									
19 RECEPT D715A									
18 RECEPT D715A									
17 RECEPT D715A									
16 RECEPT D715A									
15 RECEPT D715A									
14 RECEPT D715A									
12 RECEPT D715A									
10 RECEPT D715A									
8 RECEPT D715A									
7 RECEPT D715A									
6 RECEPT D715A									
4 RECEPT D715A									
3 RECEPT D715A									
2 RECEPT D715A									
Notes:									
Location: Space 445									
Supply From: SURFACE									
Mains Type: MCB									
Mains Rating: 225 A									
Enclosure: NEMA 1									
Wires: 4									
Phases: 3									
Volts: 120/208 Wye									
A.L.C. Rating:									
MCB Rating: 225 A									

Notes:									
Load Classification									
Other									
Receptacle									
Total Est. Demand: 61 A									
Total Conn. Current: 65 A									
Total Est. Demand: 22145.0 VA									
Total Conn. Load: 22560.0 VA									
Total Est. Demand: 61 A									
Notes:									
Legend:									
Total Amps:									
Total Load:									
41 SPACE									
39 SPACE									
37 SPACE									
36 SPACE									
35 SPACE									
34 SPACE									
33 SPACE									
32 SPACE									
31 SPACE									
29 SPACE									
27 SPACE									
25 SPACE									
24 SPACE									
22 SPACE									
21 SPACE									
20 SPACE									
19 SPACE									
18 SPACE									
17 SPACE									
16 SPACE									
15 SPACE									
14 SPACE									
13 SPACE									
12 SPACE									
11 SPACE									
10 SPACE									
9 SPACE									
8 SPACE									
7 SPACE									
6 SPACE									
5 SPACE									
4 SPACE									
3 SPACE									
2 SPACE									
1 SPACE									
Circuit Description									
Tip									
Poles									
A (VA)									
B (VA)									
C (VA)									
Poles									
Trip									
Circuit Description									
A.L.C. Rating:									
Maine Type: MCB									
Maine Rating: 225 A									
MCB Rating: 225 A									
Notes:									
Locations: Space 445									
Mounding: SURFACE									
Enclosure: NEMA 1									
Supply From:									
Phases: 3									
Wires: 4									
Voltage: 120/208 Vyle									
R-10									

[illegible][illegible]

BID DOCUMENTS