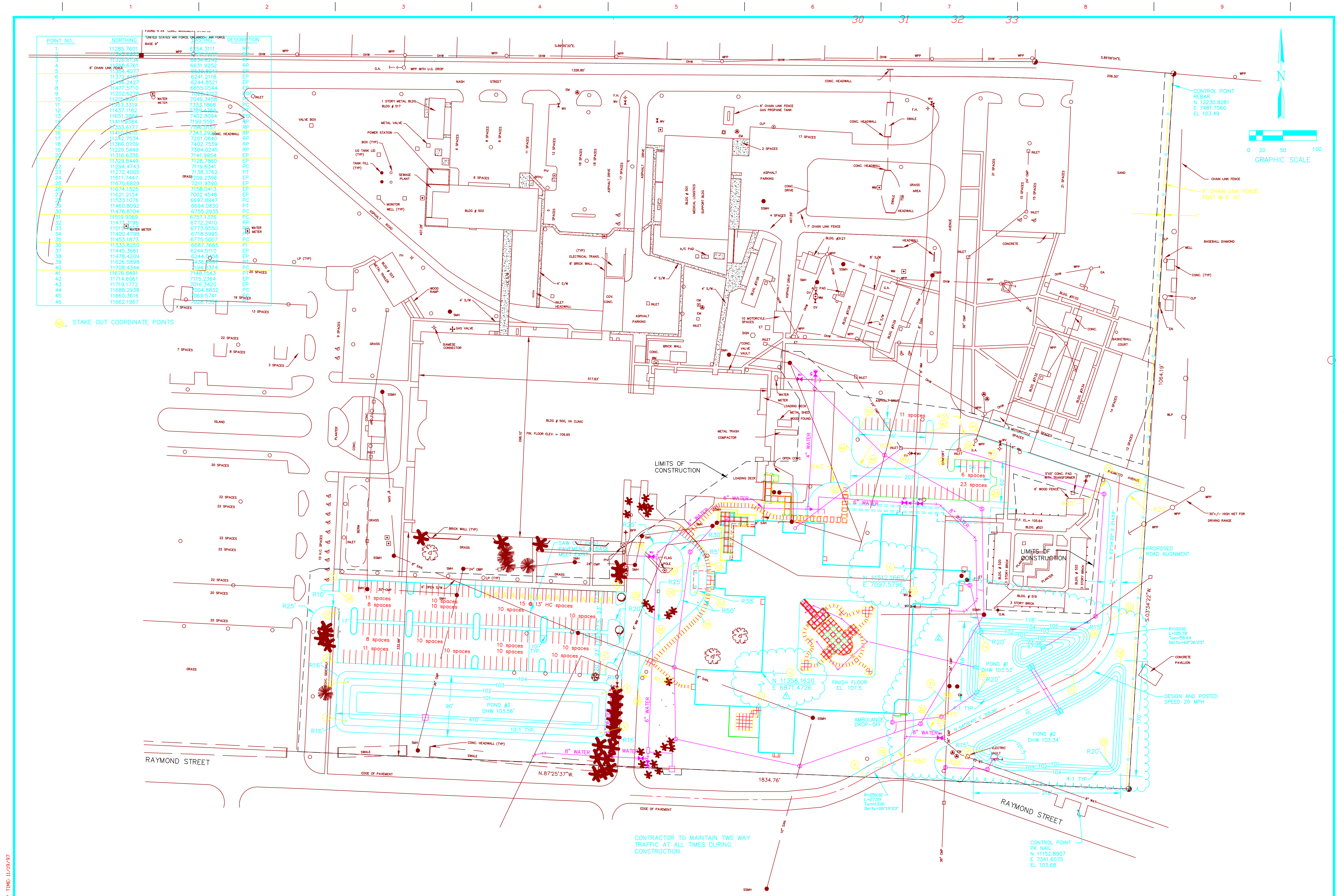


one-eighth inch = one foot  
one-quarter inch = one foot  
three-eighths inch = one foot  
one-half inch = one foot  
three-quarters inch = one foot  
one inch = one foot  
one and one-half inches = one foot  
two inches = one foot  
three inches = one foot



DATE / TIME 11/19/97		DRAWING NAME: SITE.DWG		PLOTTED SCALE: 30	
REVISED DRAINAGE PIPES		4/6/98		Date	
REVISED COORDS TO COLUMN LINE		4/6/98		Date	
Revisions					
VOA PROJECT NO. 3394A		GLACE & RADCLIFFE, INC. Consulting Engineers 800 S. Orlando Avenue #3 Maitland, Florida 32751 (407) 617-6625 Fax: (407) 539-0575		VOA ASSOCIATES, INC. ARCHITECTURE   PLANNING   INTERIOR DESIGN 200 SOUTH ORANGE AVENUE STE 1300 ORLANDO, FLORIDA 32801-3438 (407) 425-2500 FAX (407) 648-4275	
SEAL AREA		Approved: Chief, Tech. Support M & D General Foreman Industrial Hygienist Chief, Using Service		Drawing Title: SITE PLAN	
		Approved: Division Chief		Project Title: 120 Bed Nursing Home Care Unit	
		Approved: Service Director		Building Number: [ ] Checked: RBK Drawn: JWQ	
		Location: VAMC, Orlando, Florida		Date: Project No. 673-DU2403-2 DRAWING NO. C202 Dwg. Of	
				Office of Facilities Department of Veterans Affairs	