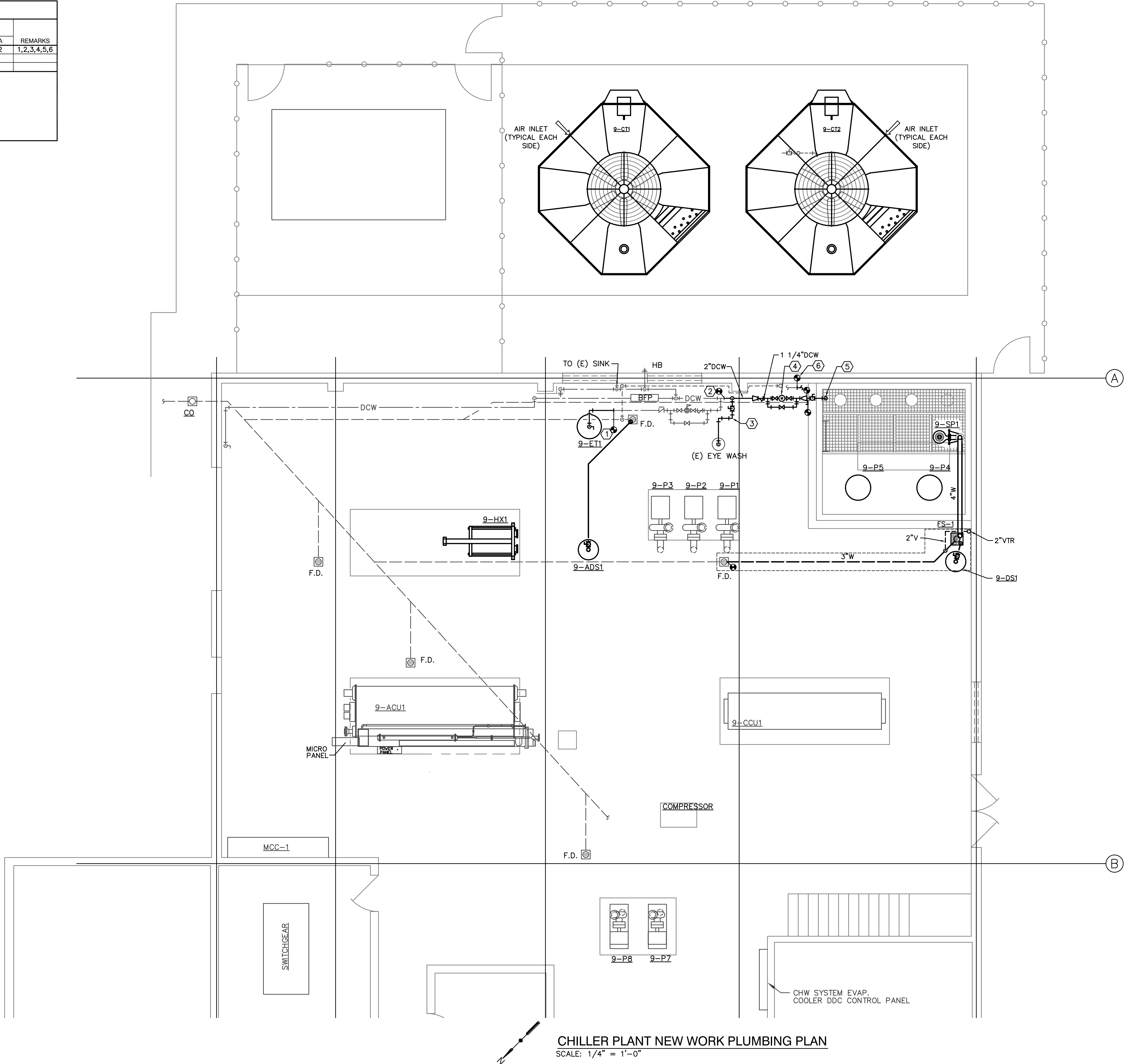


SUMP PUMP SCHEDULE														
MARK	LOCATION	MFR.	MODEL NO.	TYPE	SERVICE	FLOW (GPM)	HEAD (FT)	PUMP SPEED (RPM)	MOTOR SIZE (HP)	ELECTRICAL CHARACTERISTICS			REMARKS	
										VOLTS	PHASE	HERTZ	FLA	
SP-1	CONDENSER WATER SUMP	ZOELLER	4404	SIMPLEX	CONDENSER WATER	60	30		2	460	3	60	5.2	1,2,3,4,5,6
REMARKS:														
1. PROVIDE WITH GUIDE RAIL SYSTEM.														
2. PUMP SHALL HAVE A MINIMUM 4" DISCHARGE AND SHALL BE CAPABLE OF PASSING 3" SPHERES.														
3. PUMP SHALL HAVE PERMANENTLY LUBRICATED BALL BEARINGS.														
4. PUMP SHALL HAVE DUCTILE IRON IMPELLER AND STAINLESS STEEL SHAFT.														
5. PUMP SHALL HAVE CAST IRON HOUSING.														
6. PROVIDE WITH MOTOR STARTER WITH HAND-OFF AUTO SWITCH.														

- FS-1 FLOOR SINK
- J.R. SMITH NO. 3110Y DRAIN
    - DUCO CAST IRON BODY
    - FLASHING COLLAR WITH PROTECTOR CAP
    - WITH DOME BOTTOM STRAINER
    - CAST IRON HALF GRATE WITH STABILIZER BAR

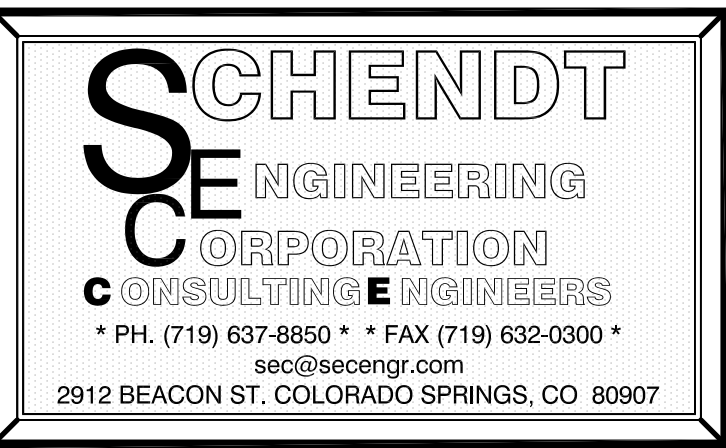
KEYNOTES

- CONNECT NEW 1" WATER LINE TO EXISTING.
- CONNECT NEW 2" WATER LINE TO EXISTING.
- NEW 1 1/4" DOMESTIC COLD WATER TO EXISTING EMERGENCY EYE WASH. PROVIDE WITH LOCKING BALL VALVE. LOCK PROVIDED BY OWNER.
- PROVIDE NEW 1 1/4" WATER METER AND WATER METER PIPING ASSEMBLY.
- NEW 2" COLD WATER MAKE-UP. ROUTE PIPE THROUGH GRATING AND TERMINATE. LEAVE AIR GAP.
- CONNECT NEW CHEMICAL FEED PIPING TO EXISTING. SEE CONDENSER WATER CONTROL SCHEMATIC FOR ADDITIONAL REQUIREMENTS AND CONNECTION POINTS.



CHILLER PLANT NEW WORK PLUMBING PLAN  
SCALE: 1/4" = 1'-0"

CONSTRUCTION DOCUMENTS 95 % SUBMITTAL	08/12/2005 02/07/2005
Revisions	Date



Drawing Title CHILLER PLANT NEW WORK PLAN
Approved: Medical Center Director
Approved: Assistant Administrator, Engineering Department

Project Title REPLACE COOLING TOWERS
Location 2121 NORTH AVENUE GRAND JUNCTION, CO 81505
Date 08/05/2005
Checked TBS
Drawn DJS

Project Number 575-05-103
Building Number BUILDING NO. 9
Drawing Number P2
Dwg. 13 of 16

OFFICE OF  
FACILITIES  
MANAGEMENT

