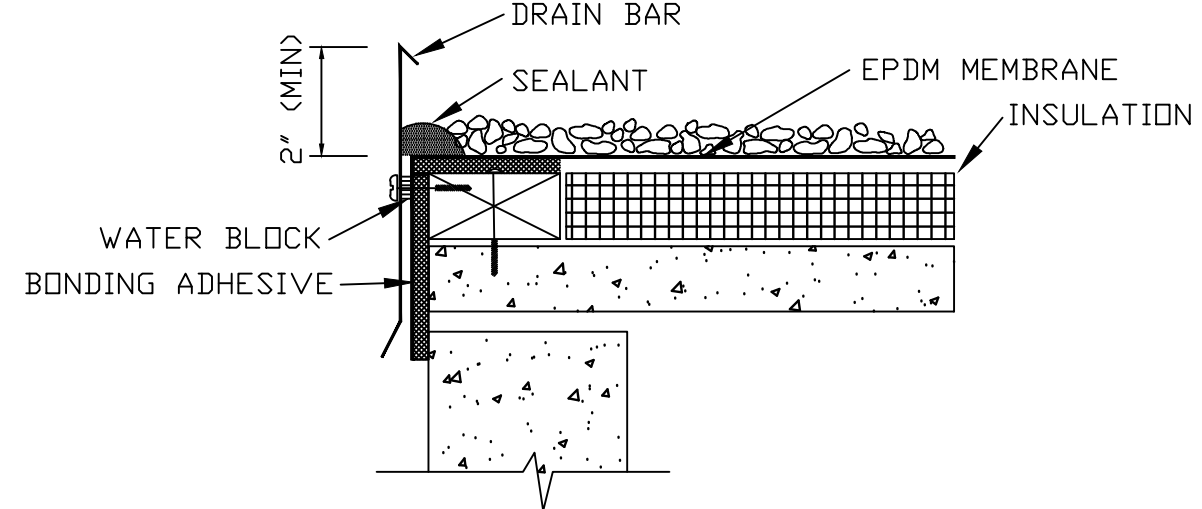
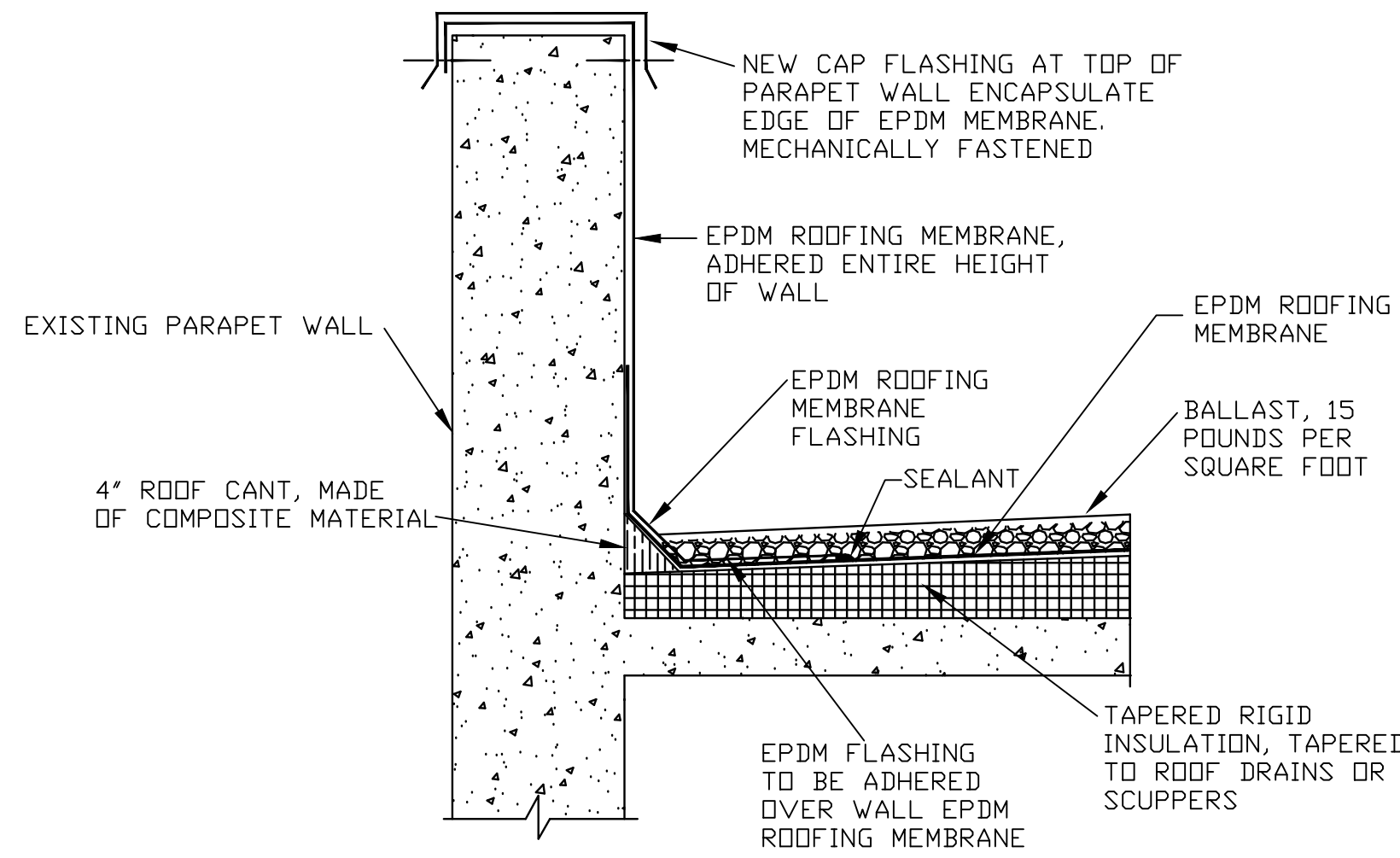


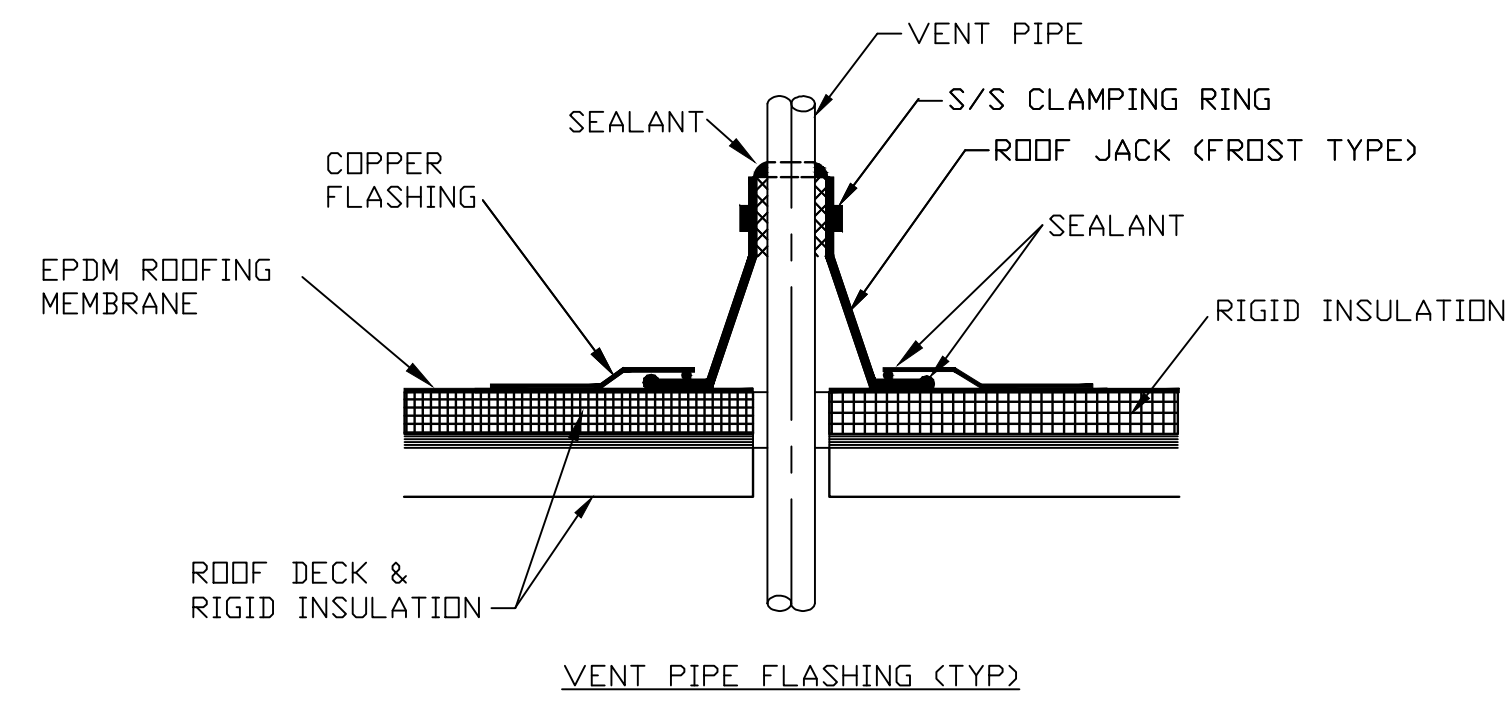
TYPICAL SECTION OF FLAT BALLASTED ROOF
ABUTTING VERTICAL WALL OR PARAPET WALL
N.T.S.



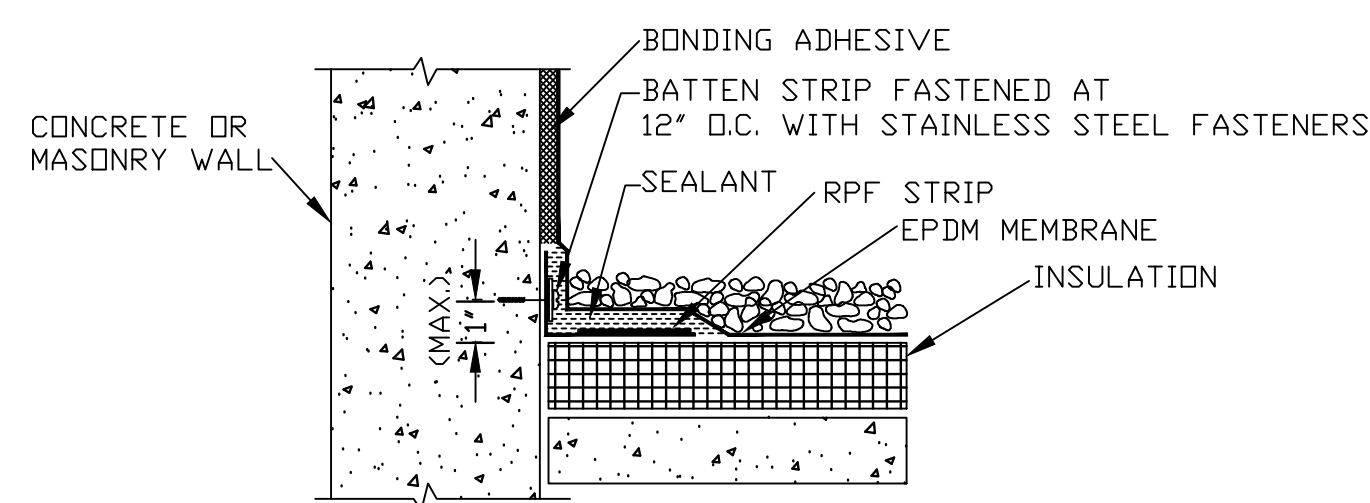
TYPICAL SECTION OF ROOF'S EDGE
AT FLAT BALLASTED ROOF
N.T.S.



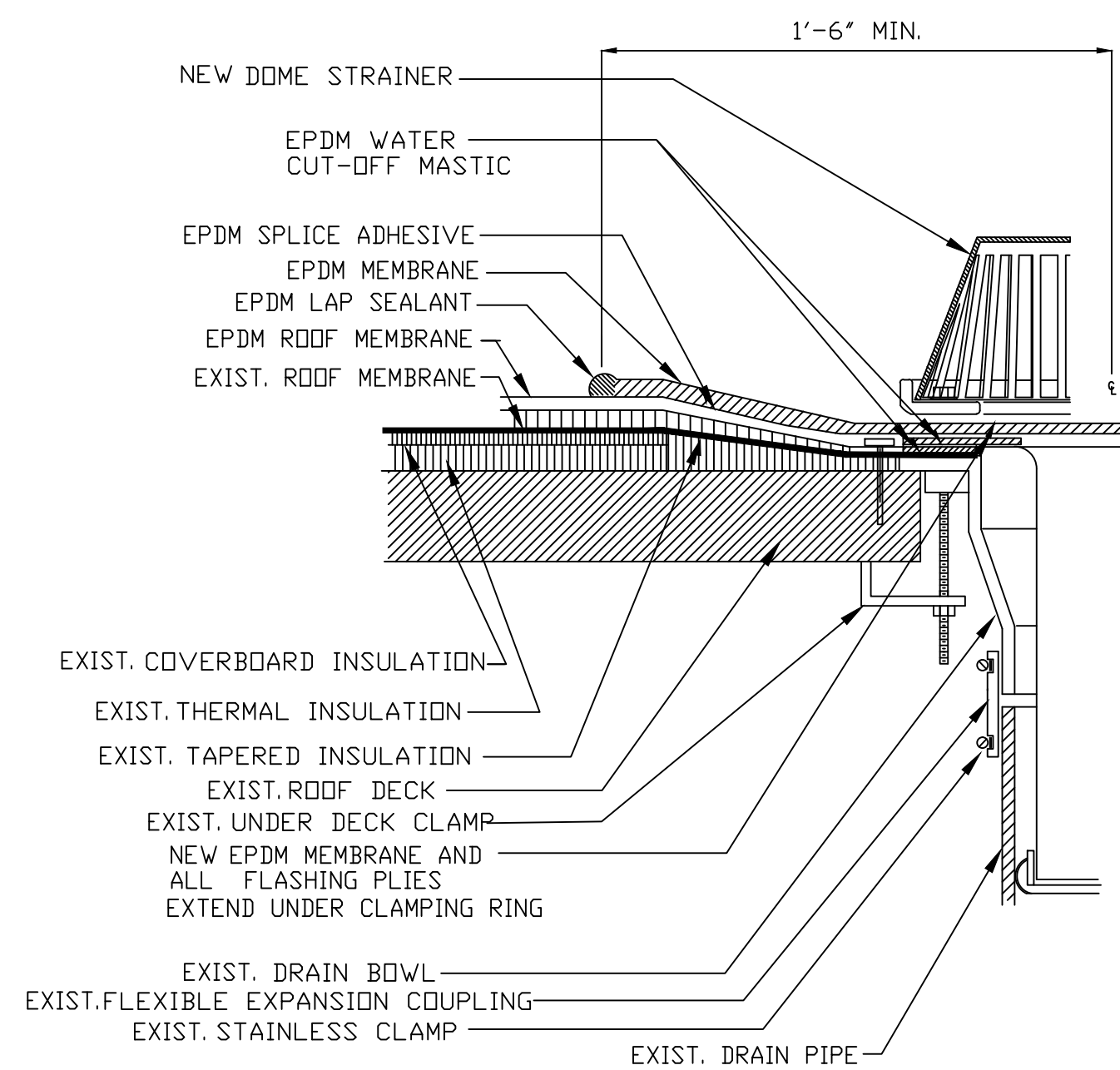
TYPICAL SECTION OF FLAT BALLASTED ROOF
ABUTTING VERTICAL WALL OR PARAPET WALL
N.T.S.



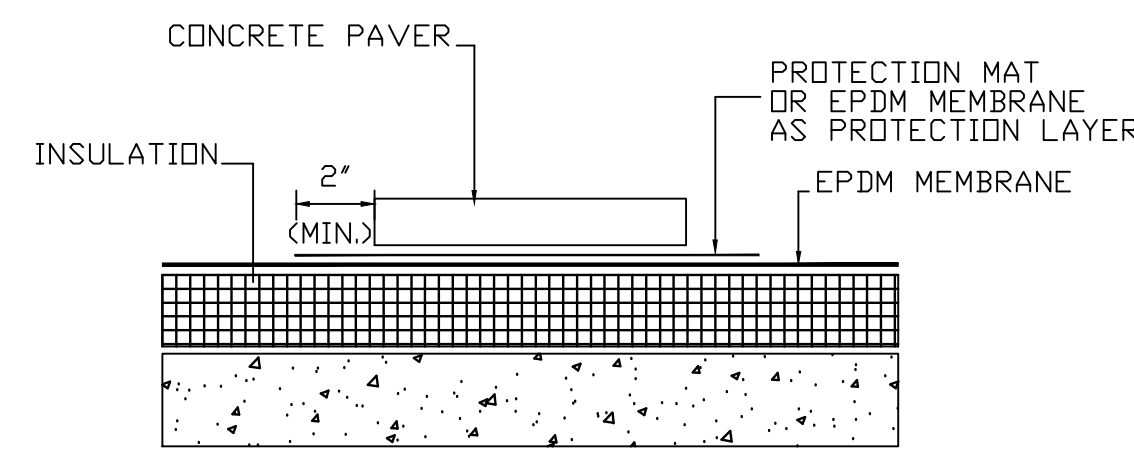
TYPICAL SECTION OF ROOF VENT PENETRATIONS
N.T.S.



TYPICAL SECTION OF FLAT BALLASTED ROOF
ABUTTING A VERTICAL WALL
N.T.S.



TYPICAL DETAIL OF ROOF DRAIN INSTALLATION
N.T.S.



TYPICAL DETAIL OF WALKWAY PAD
N.T.S.

No	REVISION	DATE

APPROVED SERVICE LINE DIRECTOR	DATE	APPROVED INFECTION CONTROL NURSE	DATE
APPROVED GENS COORDINATOR	DATE	APPROVED PATIENT SAFETY	DATE
APPROVED PROJECTS SECTION MANAGER	DATE	APPROVED CHIEF OF POLICE	DATE
APPROVED DIRECTOR FMS	DATE	APPROVED SAFETY MANAGER	DATE

DRAWING TITLE	DETAILS
APPROVED DIRECTOR FMS	DATE
APPROVED MEDICAL CENTER DIRECTOR	DATE

PROJECT TITLE	REPLACE FLAT ROOFS
BUILDING No	N/A
DESIGNED BY	RLC
LOCATION	VIA MEDICAL CENTER ST.CLOUD, MN 56303

DATE	2/9/12
SCALE	AS NOTED
PROJECT NO.	656-12-213SCIP
DRAWN	1028-1
DRAWING NO.	1028
DWG 11 OF 13	

