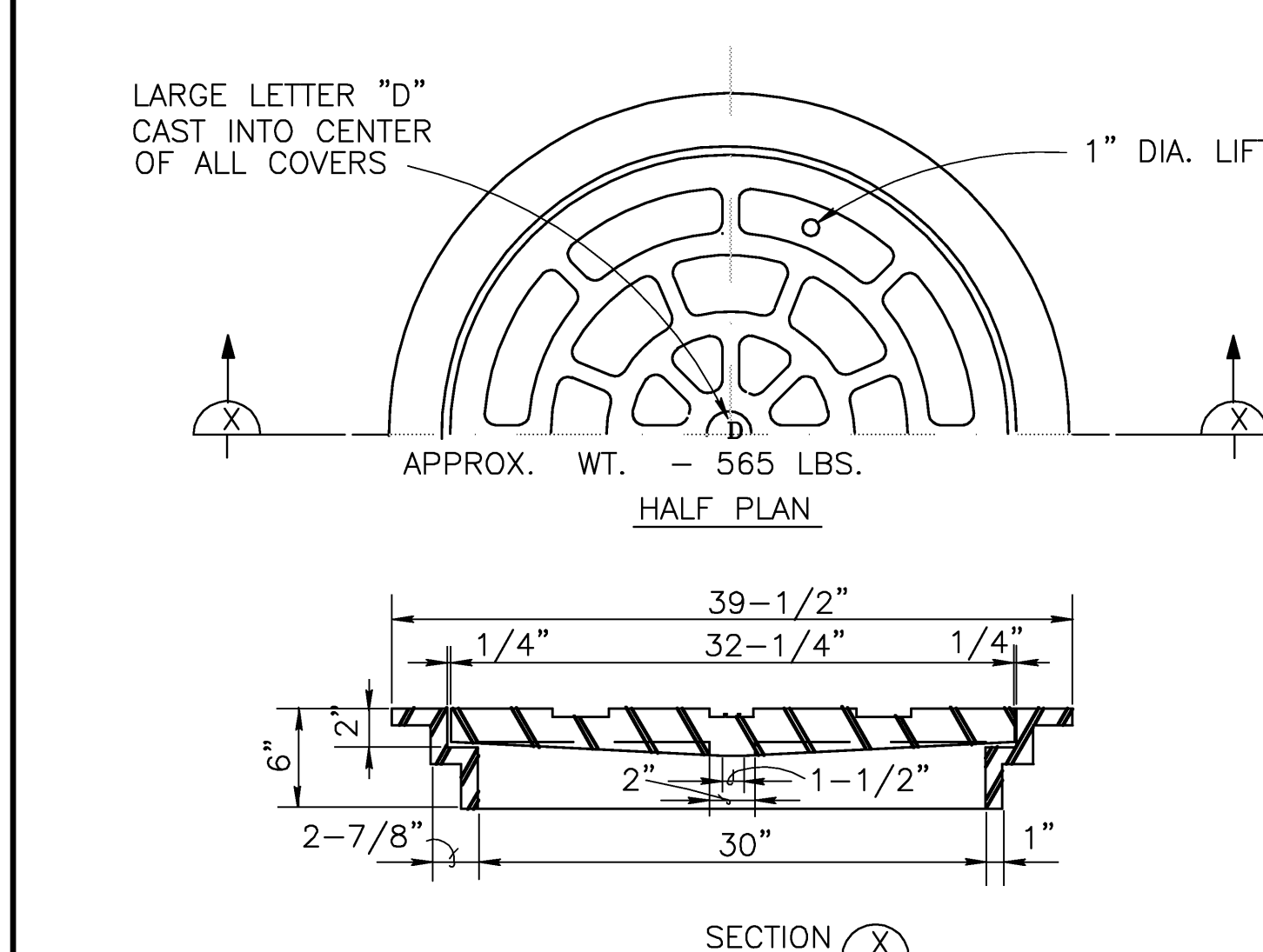
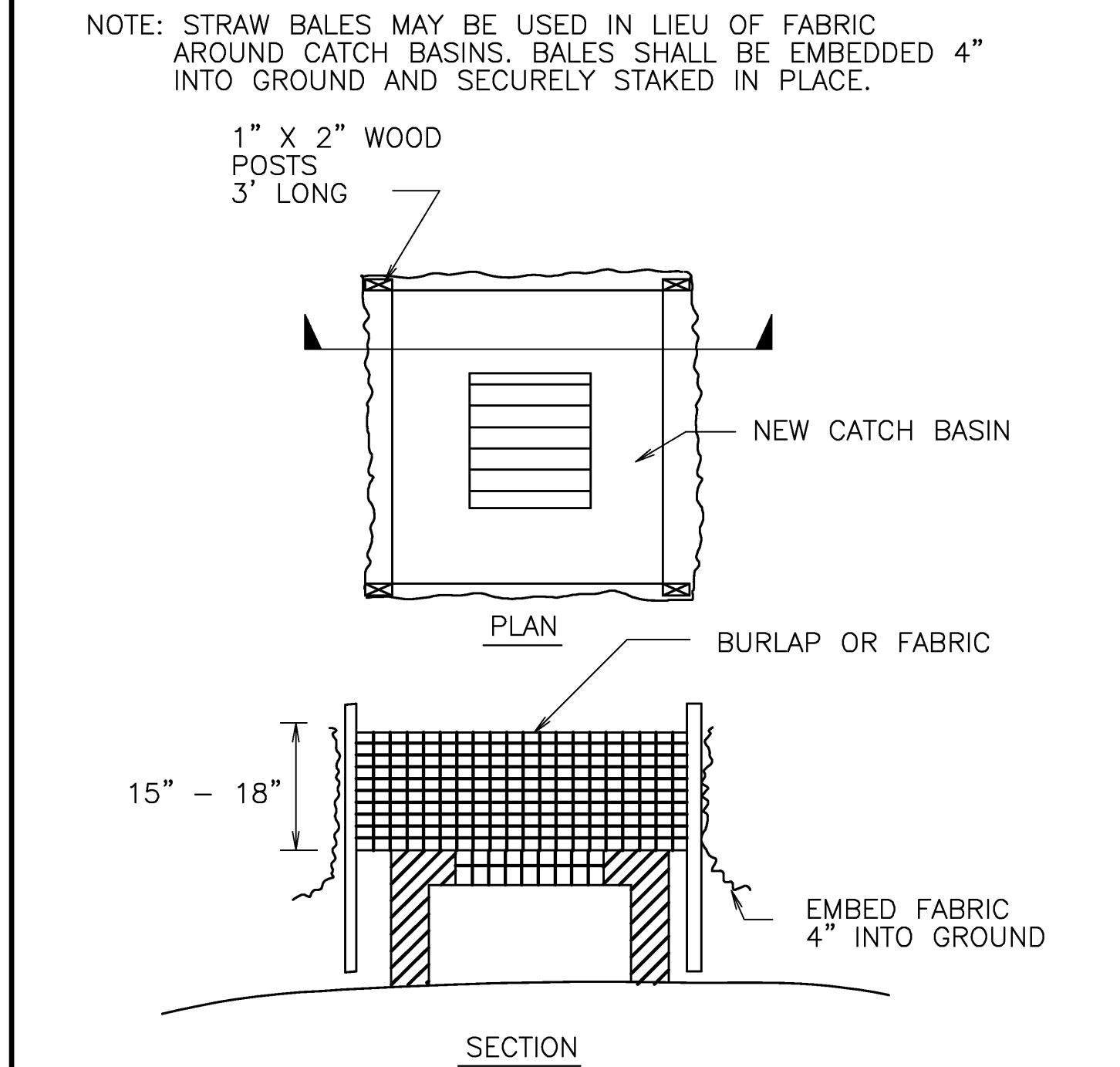


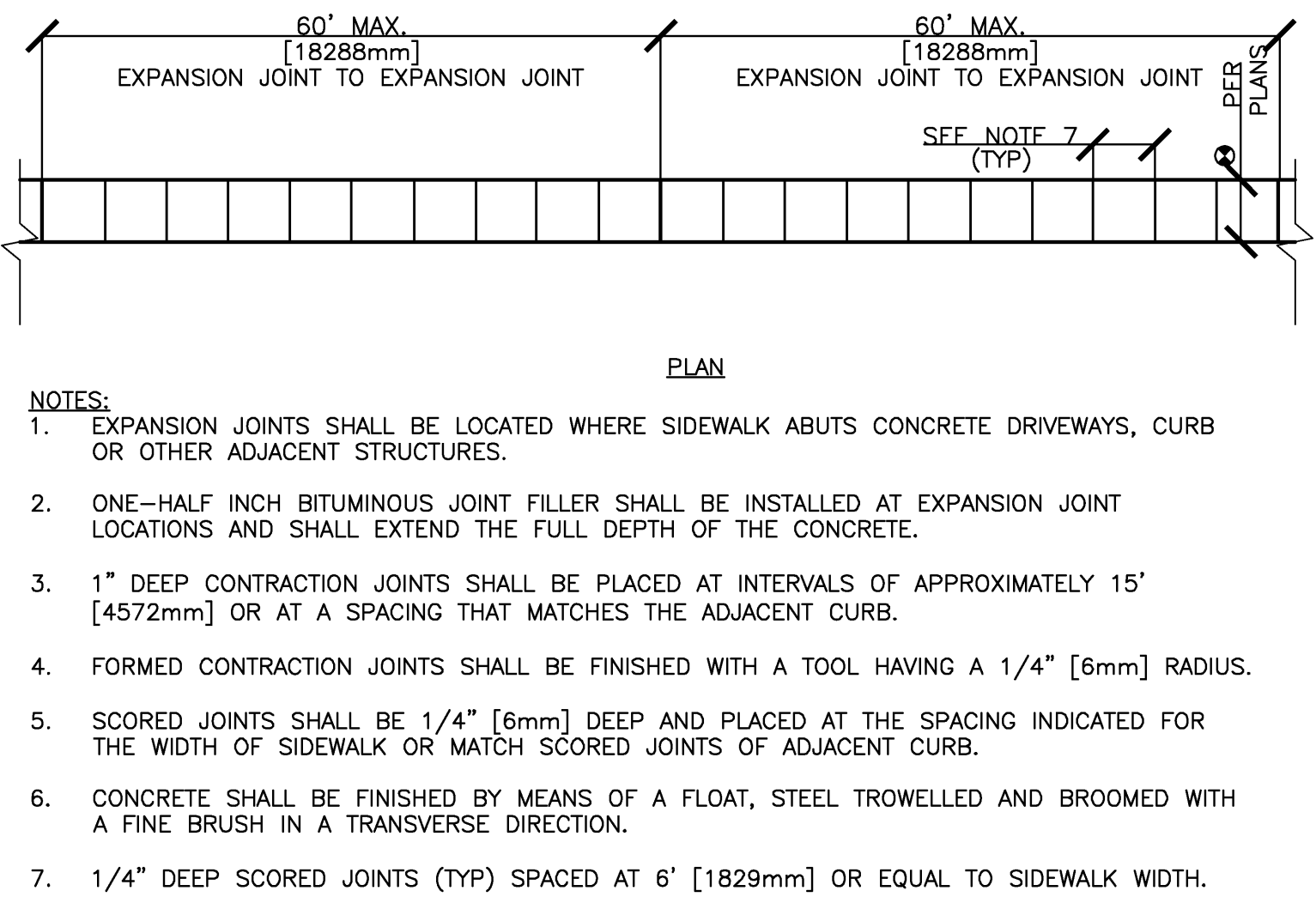
1 CONCRETE SIDEWALK  
NTS



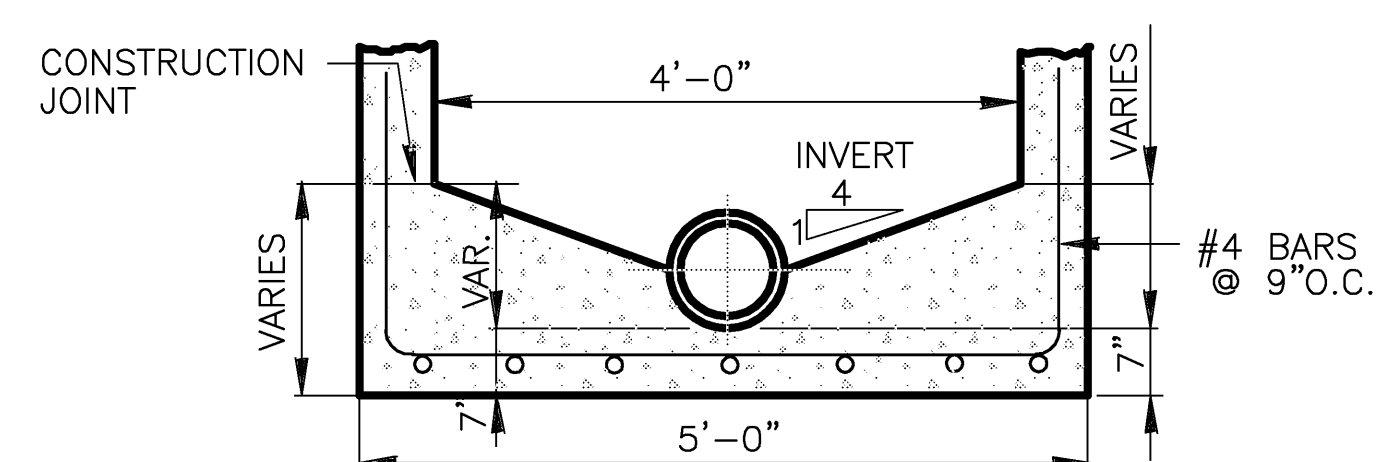
4 MANHOLE COVER AND FRAME  
MCF-30-HD  
NTS



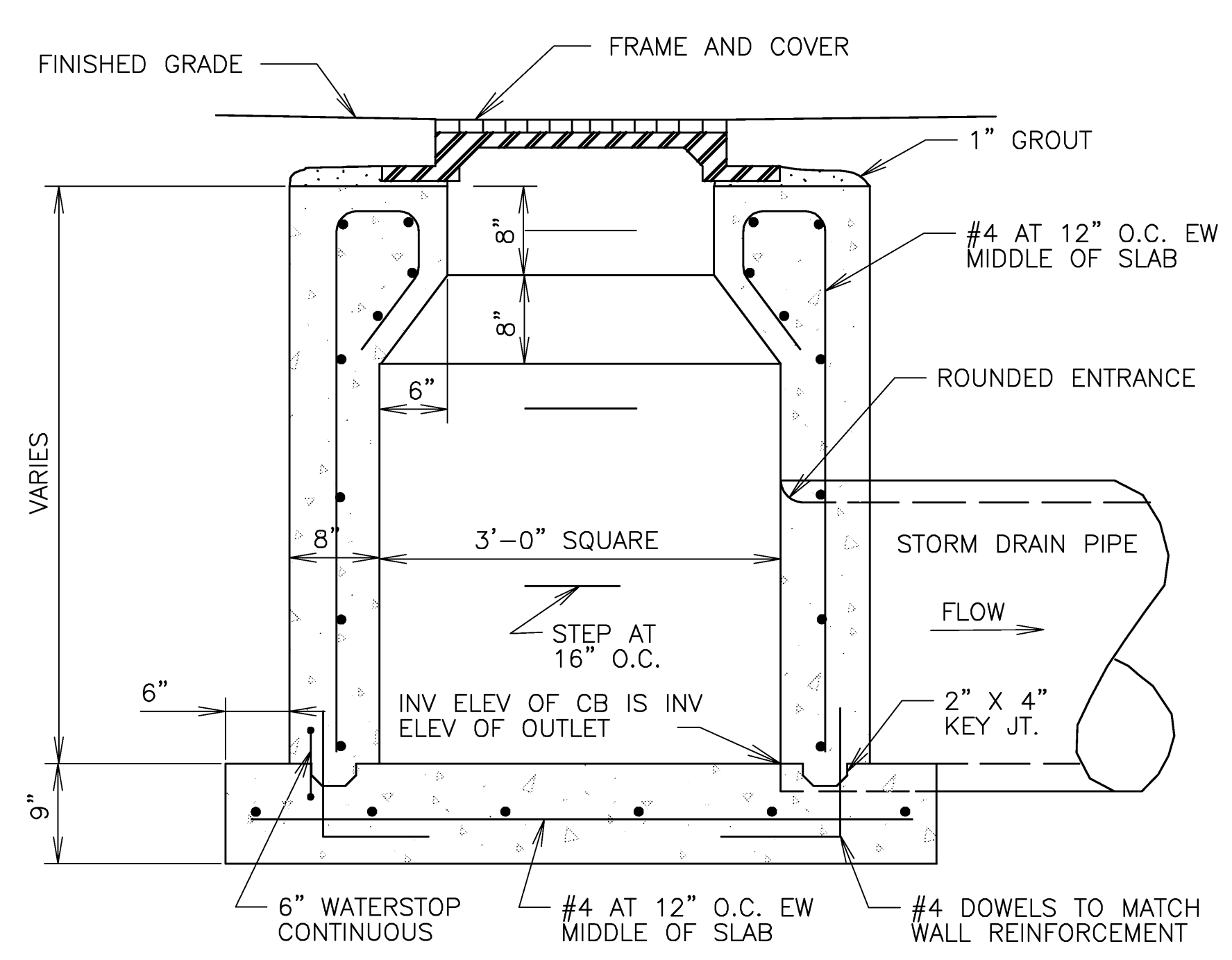
8 CATCH BASIN PROTECTION DETAIL  
NTS



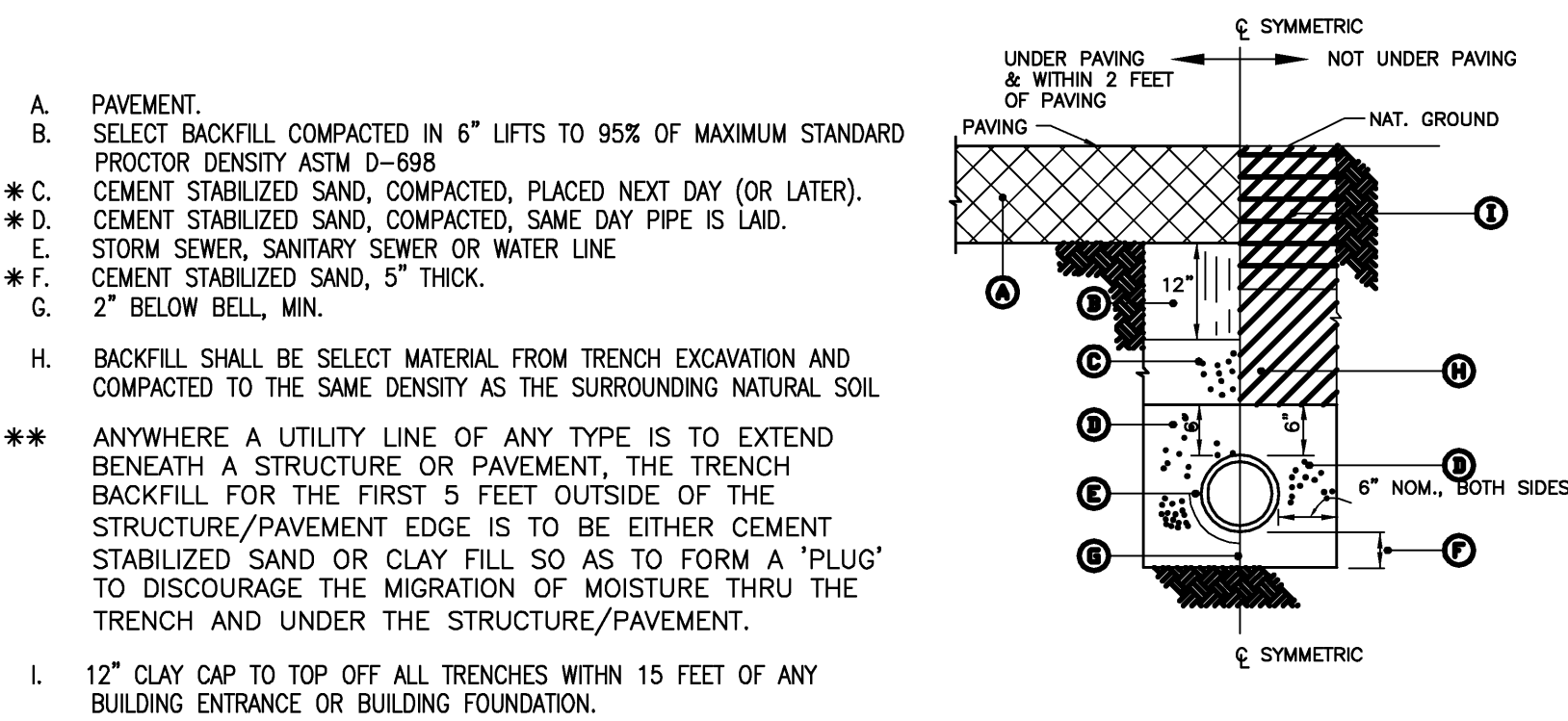
CONCRETE SIDEWALK  
NTS



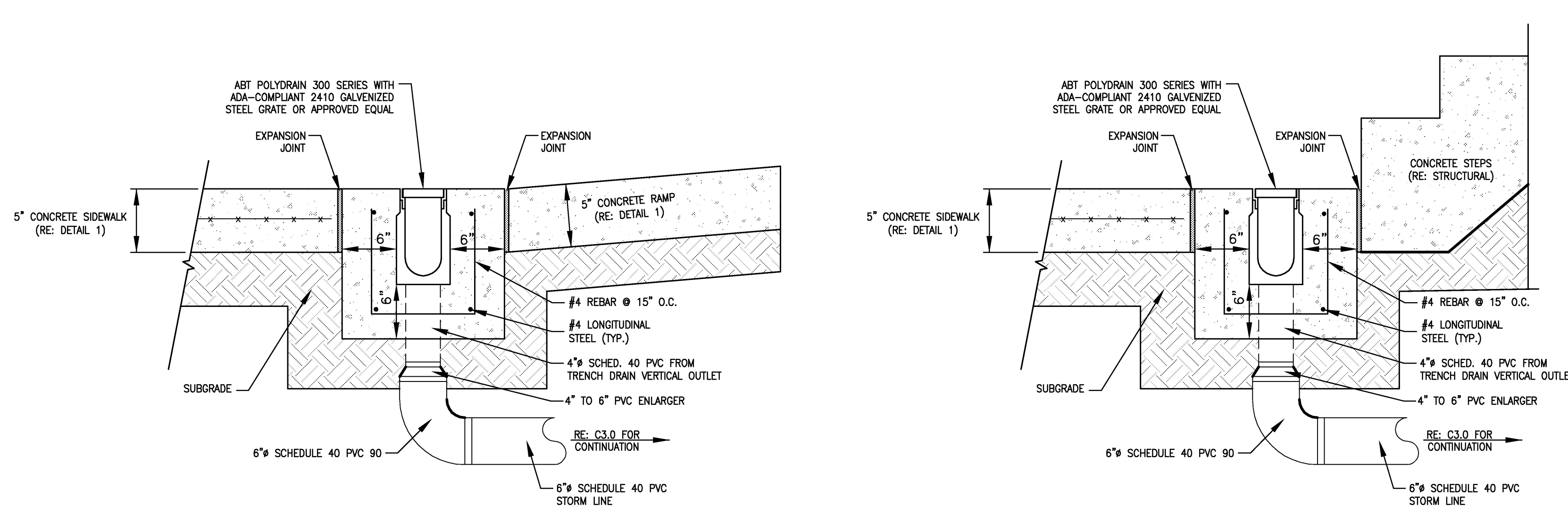
5 SECTION THRU STANDARD SANITARY MANHOLE  
NTS



2 CATCH BASIN DETAIL  
NTS

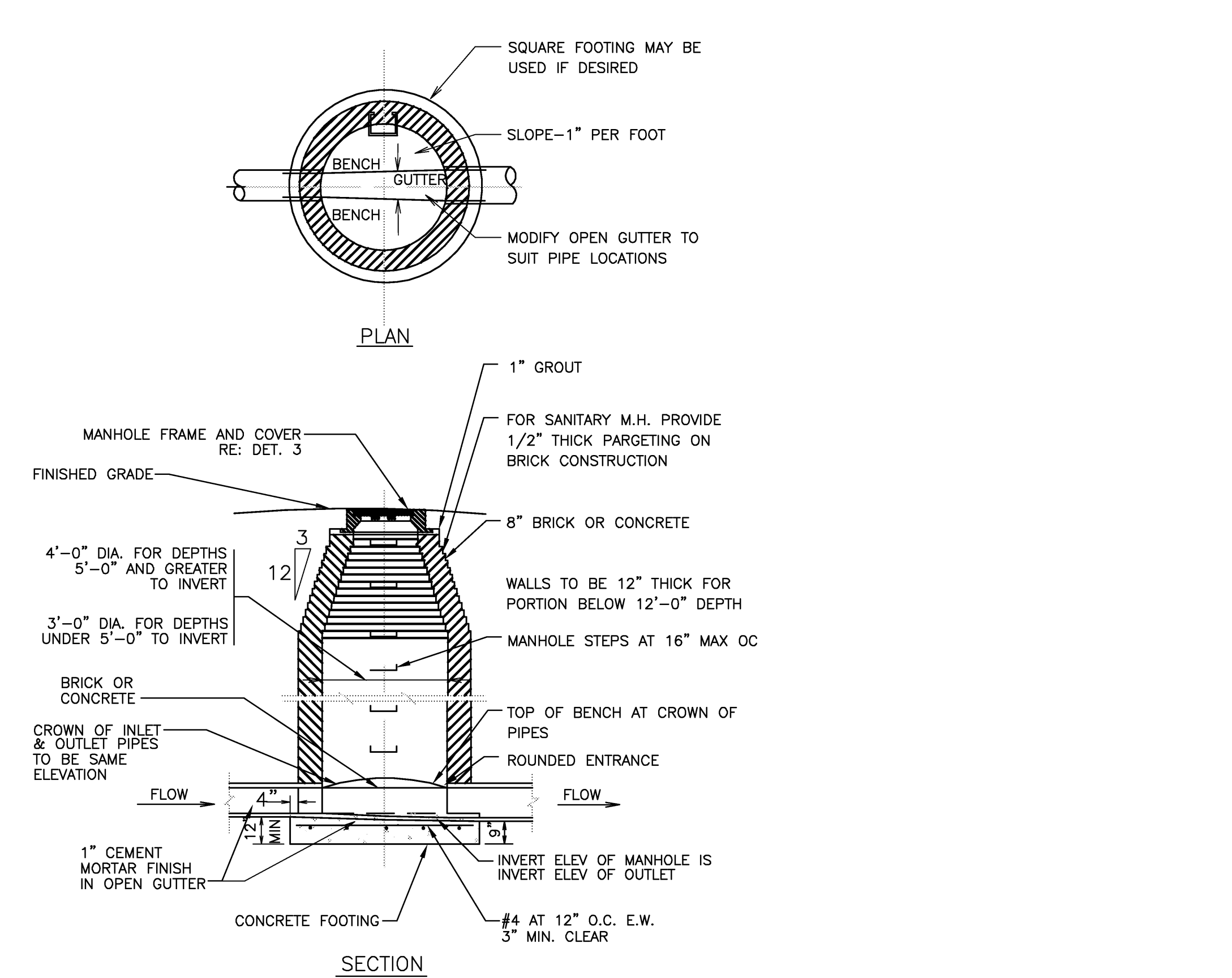


6 TYPICAL TRENCH BACKFILL DETAIL  
NTS

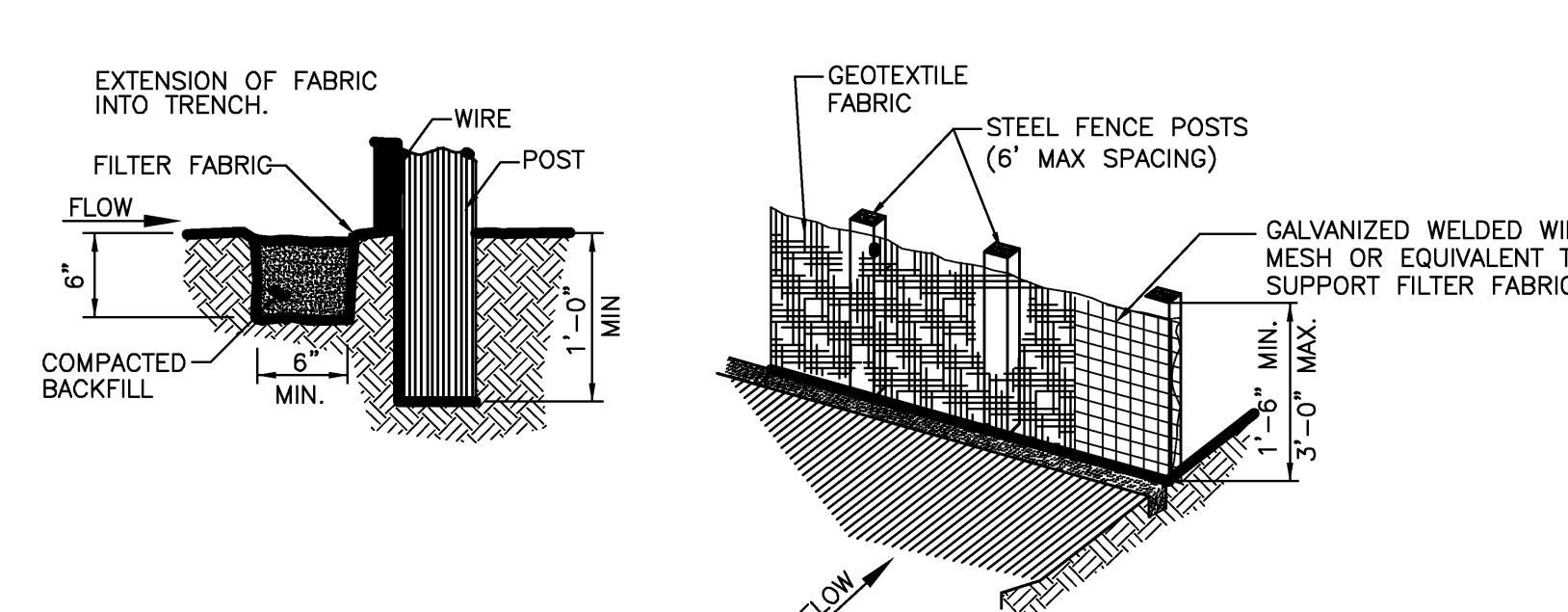


9 TRENCH DRAIN DETAIL AT RAMP  
NTS

10 TRENCH DRAIN DETAIL AT STAIR  
NTS



3 MANHOLE DETAIL  
NTS

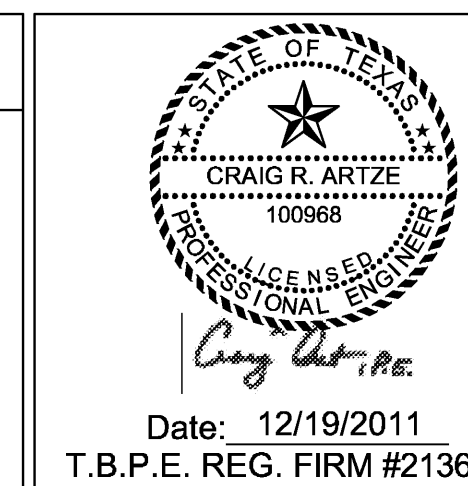


- NOTE:
- STEEL POSTS THAT SUPPORT THE SILT FENCE SHALL BE INSTALLED AT A SLIGHT ANGLE TOWARD THE ANTICIPATED RUNOFF SOURCE. POSTS MUST BE EMBEDDED MINIMUM DEPTH OF 1'-0".
  - THE TOE OF THE SILT FENCE SHALL BE TRENCHED IN WITH A SPADE OR MECHANICAL TRENCHER, SO THAT THE DOWNSLOPE FACE OF THE TRENCH IS FLAT AND PERPENDICULAR TO THE LINE OF FLOW.
  - SILT FENCE SHALL BE SECURELY FASTENED TO EACH STEEL SUPPORT POST OR TO WOVEN WIRE WHICH IS IN TURN FASTENED TO THE STEEL POST.
  - INSPECTION SHALL BE MADE WEEKLY OR AFTER EACH REINFALL EVENT AND REPAIR OR REPLACEMENT SHALL BE MADE PROMPTLY AS NEEDED.
  - SILT FENCE SHALL BE REMOVED WHEN THE SITE IS COMPLETELY STABILIZED SO AS NOT TO BLOCK OR IMPEDE STORM FLOW OR DRAINAGE.
  - ACCUMULATED SILT SHALL BE REMOVED WHEN IT REACHES A DEPTH OF 6 INCHES. THE SILT SHALL BE DISPOSED OF IN AN APPROVED SITE AND IN SUCH A MANNER AS TO NOT CONTRIBUTE TO ADDITIONAL SILTATION.

7 SILT FENCE DETAIL  
NTS

SCHEMATIC DESIGN SUBMISSION	08/02/10
DESIGN DEVELOPMENT SUBMISSION	09/03/10
CONSTRUCTION DOCUMENT SUBMISSION	11/22/10
ISSUED FOR BIDS	12/19/11
Revisions	Date

CONSULTANTS:



ARCHITECT/ENGINEERS:

**WILSON ARCHITECTURAL GROUP**  
5051 WESTHEIMER SUITE 200 HOUSTON, TEXAS 77056 TELEPHONE (713) 621-6744

MEP ENGINEERS  
STRUCTURAL ENGINEERS  
FIRE PROTECTION ENGINEERS  
CIVIL ENGINEERS

BURNS DeLATTE AND MCCOY, INC.  
PINNACLE STRUCTURAL  
PROTECTION DEVELOPMENT INC.  
BREWER AND ESCALANTE

DO NOT SCALE THESE DRAWINGS. G.C. TO FIELD VERIFY DIMENSIONS

Drawing Title	CIVIL DETAILS
Approved Project Director	

Project Title	BUILDING 11 ADDITION & INTERIOR RENOVATIONS
Location	WACO, TEXAS
Date	19 DEC 2011
Checked	
Drawn	

ISSUED FOR BIDS	Project Number
674A4-CSI-516	
Building Number	11
Drawing Number	C 4.0
Dwg. of	

FULLY SPRINKLERED

Office of  
Construction  
and Facilities  
Management

Department of  
Veterans Affairs