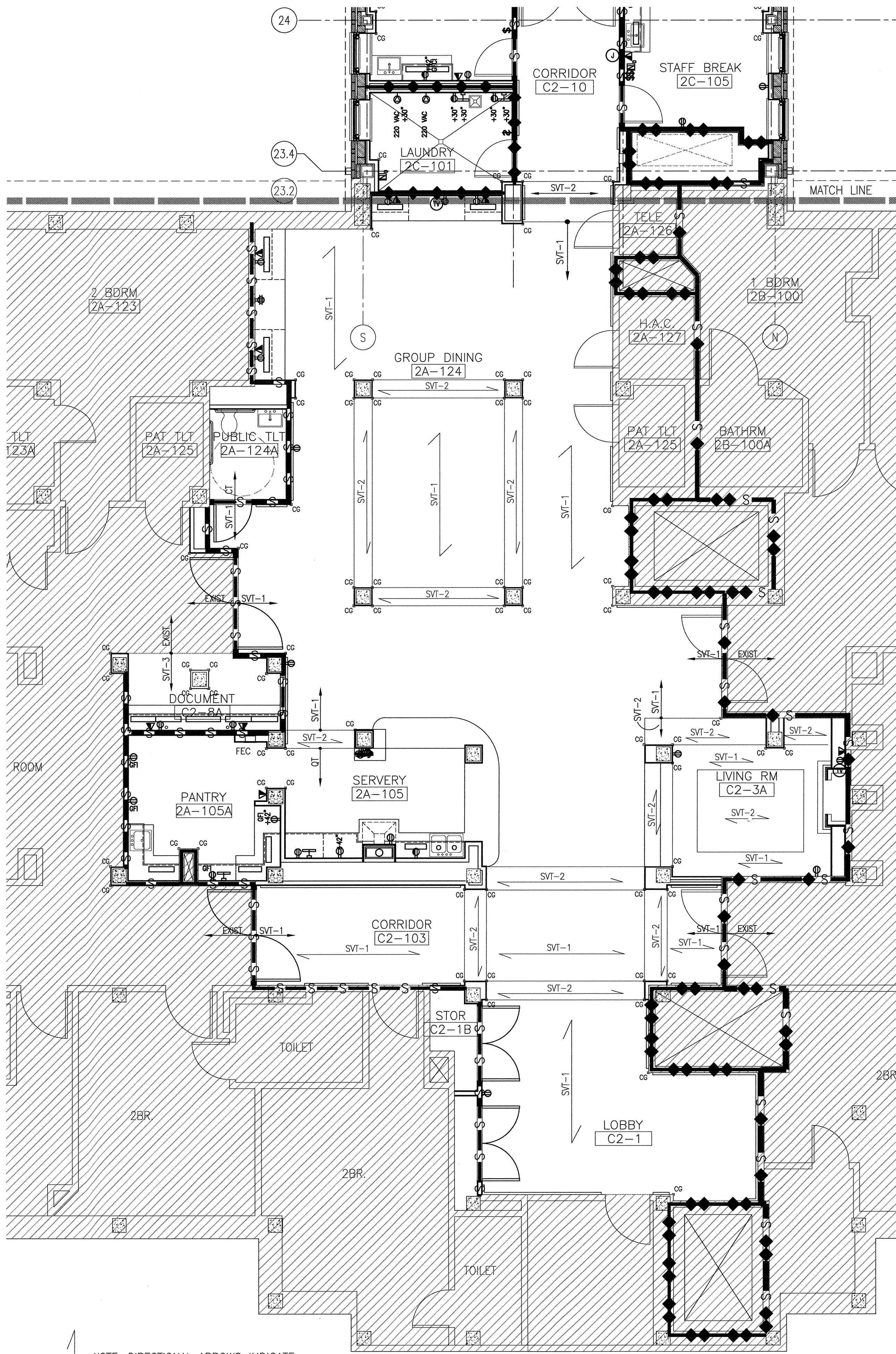


three eighths inch = one foot  
one eighth inch = one foot  
one quarter inch = one foot  
one half inch = one foot  
three quarters inch = one foot  
one inch = one foot  
one and one half inches = one foot  
two inches = one foot  
three inches = one foot



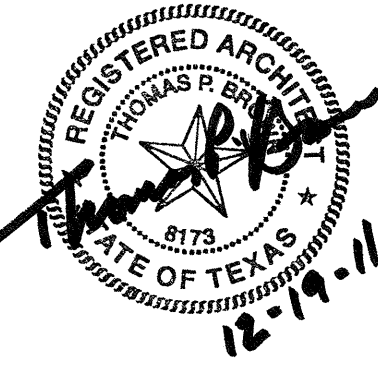
26 SECOND FLOOR FINISHES PLAN

SCALE: 3/16"=1'-0"

FIN. FLR. = 585.53'

SCHEMATIC DESIGN SUBMISSION	08/02/10
DESIGN DEVELOPMENT SUBMISSION	09/03/10
CONSTRUCTION DOCUMENT SUBMISSION	11/22/10
ISSUED FOR BIDS	12/19/11
Revisions	Date

CONSULTANTS:



ARCHITECT/ENGINEERS:

WILSON ARCHITECTURAL GROUP

500 WESTHEIMER, SUITE 200 HOUSTON, TEXAS 77056 TELEPHONE 713 625-6714

MEP ENGINEERS  
STRUCTURAL ENGINEERS  
FIRE PROTECTION ENGINEERS  
CIVIL ENGINEERS

BURNS DeLATTIE AND MCCOY, INC.  
PINNACLE STRUCTURAL  
PROTECTION DEVELOPMENT INC.  
BREWER AND ESCALANTE

DO NOT SCALE THESE DRAWINGS. G.C. TO FIELD VERIFY DIMENSIONS

Drawing Title  
FIRST & SECOND FLOOR  
FINISHES PLAN - BLDG 11

Approved Project Director

Project Title  
BUILDING 11 ADDITION &  
INTERIOR RENOVATIONS

Location  
WACO, TEXAS

Date  
19 DEC 2011

Checked

Drawn

ISSUED FOR BIDS

Project Number

674A4-CS1-516

Building Number

11

Drawing Number

11-AS-1.05

Dwg. of

FULLY SPRINKLERED

Office of  
Construction  
and Facilities  
Management



FLOORING  
SVT1 - MANNINGTON: LIGHT FIELD COLOR RANDOM PLANK-HERITAGE HICKORY 12141 'RUSSET'  
SVT2 - MANNINGTON: DARK ACCENT COLOR RANDOM PLANK-HERITAGE HICKORY 12140 'SABLE'  
SVT3 - SOLID VINYL TILE TO MATCH EXIST LIGHT FIELD COLOR  
SVT4 - SOLID VINYL TILE TO MATCH EXIST DARK ACCENT COLOR  
WSF - MANNINGTON BIOSPEC: COLOR TO BE SELECTED  
CP - CARPETING SPECIFIED: W/COLOR & TEXTURE TO BE SELECTED  
RES-1 - (LIGHT DUTY) RESINOUS FLOORING: COLOR TO BE SELECTED

BASE  
RB - RUBBER BASE (COVE FOR SVT AND STRAIGHT FOR CARPETING): COLOR TO BE SELECTED

GROUT  
- COLOR TO BE SELECTED

EXTERIOR STEEL  
EXTERIOR HM FRAMES & DOORS-PRIMED & PTD TO MATCH EXIST WHITE: COLOR TO BE SELECTED

EXTERIOR HANDRAILS - PRIMED & PTD DARK BRONZE: COLOR TO BE SELECTED

CASEWORK  
LAM - WILSONART: COLOR TO BE SELECTED

SS - CORIAN ACORN (SOLID SURFACE HORIZONTAL SURFACES): COLOR TO BE SELECTED

PAINT  
P1 - SHERWIN WILLIAMS LIGHT FIELD COLOR TO BE SELECTED

P2 - SHERWIN WILLIAMS DARK ACCENT COLOR TO BE SELECTED

TILE  
CT1 - FLOOR TILE: DARK COLOR TO BE SELECTED

CT2 - WALL TILE: LIGHT FIELD COLOR TO BE SELECTED

CT3 - WALL TILE: MEDIUM ACCENT COLOR TO BE SELECTED

QT - FLOOR TILE: COLOR TO BE SELECTED

WALL PROTECTION  
HANDRAIL, CRASHRAIL, WAINSCOT MOULDING, CG & AVY - C/S GROUP: COLOR TO BE SELECTED

05 SCHEDULE FOR COLOR OF FINISHES

SCALE: N.T.S.

- REFER TO SHEET 11-AG-0.01 FOR DEFINITIONS OF ABBREVIATIONS, SYMBOLS, AND MATERIALS IDENTIFICATIONS.
- REFER TO SHEETS 11-AS-1.08, 11-AS-1.09, & 11-AS-1.10 FOR REFLECTED CEILING PLANS OF THESE AREAS
- REFER TO SHEETS 11-AS-1.06 & 11-AS-1.07 FOR FLOOR EQUIPMENT PLANS OF THESE AREAS
- REFER TO SHEET 11-AS-3.00 FOR INFORMATION REGARDING TO EXTERIOR BUILDING ELEVATIONS
- ALL GWB TO BE PAINTED PT-1 U.N.O.
- WHEN INSTRUCTED TO MATCH FINISH, GENERAL CONTRACTOR MUST FIELD VERIFY NEW/EXISTING ADJACENT FINISHES AND MATCH SAD FINISHES IN MATERIAL, COLOR, TEXTURE, SHEEN, ETC.
- WHENEVER ONE FLOOR FINISH CHANGES TO ANOTHER AT THE THRESHOLD OF A DOOR, INSTALL AN APPROPRIATE TRANSITION STRIP DIRECTLY BENEATH THE CENTERLINE OF THE DOOR.
- REFER TO SHEET AS-6.01 FOR ADDITIONAL DETAILS PERTAINING TO HAND RAILS, CORNER GUARDS, AND RESILIENT VINYL WALL PROTECTION
- FOR AREAS NOT COVERED HERE, MATCH EXISTING FINISHES. WHERE FURTHER GUIDANCE IS NEEDED, REFER TO VA PROGRAM GUIDE PG-18-14 (ROOM FINISHES, DOOR, AND HARDWARE SCHEDULES SUBMIT ALL CHANGES/ADDITIONS TO THE OWNER AND ARCHITECT IN WRITING (FOLLOW SUBMITTAL PROCEDURES)
- PROVIDE VENETIAN BLINDS AT ALL EXTERIOR WINDOWS (MATCH EXIST)
- ALL INTERIOR DOORS SHALL BE SOLID WOOD CORE ACROVYN DOORS W/CONT ACROVYN DOOR EDGES
- ENSURE ALL CASEWORK UTILIZES LAMINATES AND SOLID SURFACES AS SELECTED BY VA

04 GENERAL NOTES

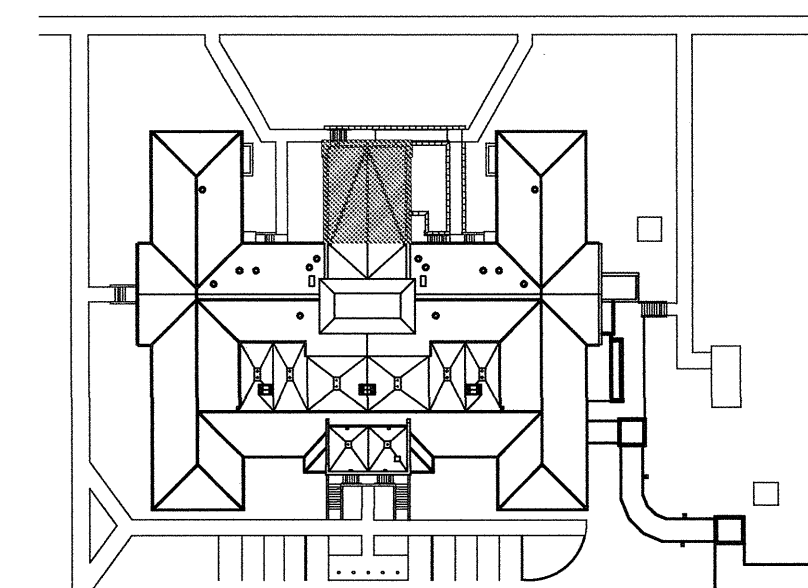
SCALE: N.T.S.

FIRST FLOOR LEVEL						
NUMBER	ROOM	FLOOR	BASE	WALLS	WAINES	CEILING
1A-124	GROUP DINING	SVT1/SVT2	RB	GWB		AT/GWB
1A-124A	PUBLIC TOILET	CT	RB	GWB/CT		GWB
1A-105	SERVERY	QT	RB	GWB		AT/GWB
C1-3A	LIVING ROOM	SVT1/SVT2	RB	GWB		AT/GWB
1A-105A	PANTRY	QT	RB	GWB		AT
C1-8A	DOCUMENT	SVT-3	RB	GWB		AT
C1-103	CORRIDOR	SVT-1	RB	GWB		AT/GWB
C1-1	LOBBY	SVT-1	RB	GWB		AT
C1-1A	ENTRY VESTIBULE	SVT-1	RB	GWB		AT

SECOND FLOOR LEVEL						
NUMBER	ROOM	FLOOR	BASE	WALLS	WAINES	CEILING
2A-124	GROUP DINING	SVT1/SVT2	RB	GWB		AT/GWB
2A-124A	PUBLIC TOILET	CT	RB	GWB/CT		AT
2A-105	SERVERY	QT	RB	GWB		AT/GWB
C2-3A	LIVING ROOM	SVT1/SVT2	RB	GWB		AT/GWB
2A-105A	PANTRY	QT	RB	GWB		AT
C2-8A	DOCUMENT	SVT-3	RB	GWB		AT
C2-103	CORRIDOR	SVT-1	RB	GWB		AT/GWB
C2-1	LOBBY	SVT-1	RB	GWB		AT

02 SCHEDULE FOR FINISHES

SCALE: N.T.S.



KEY PLAN