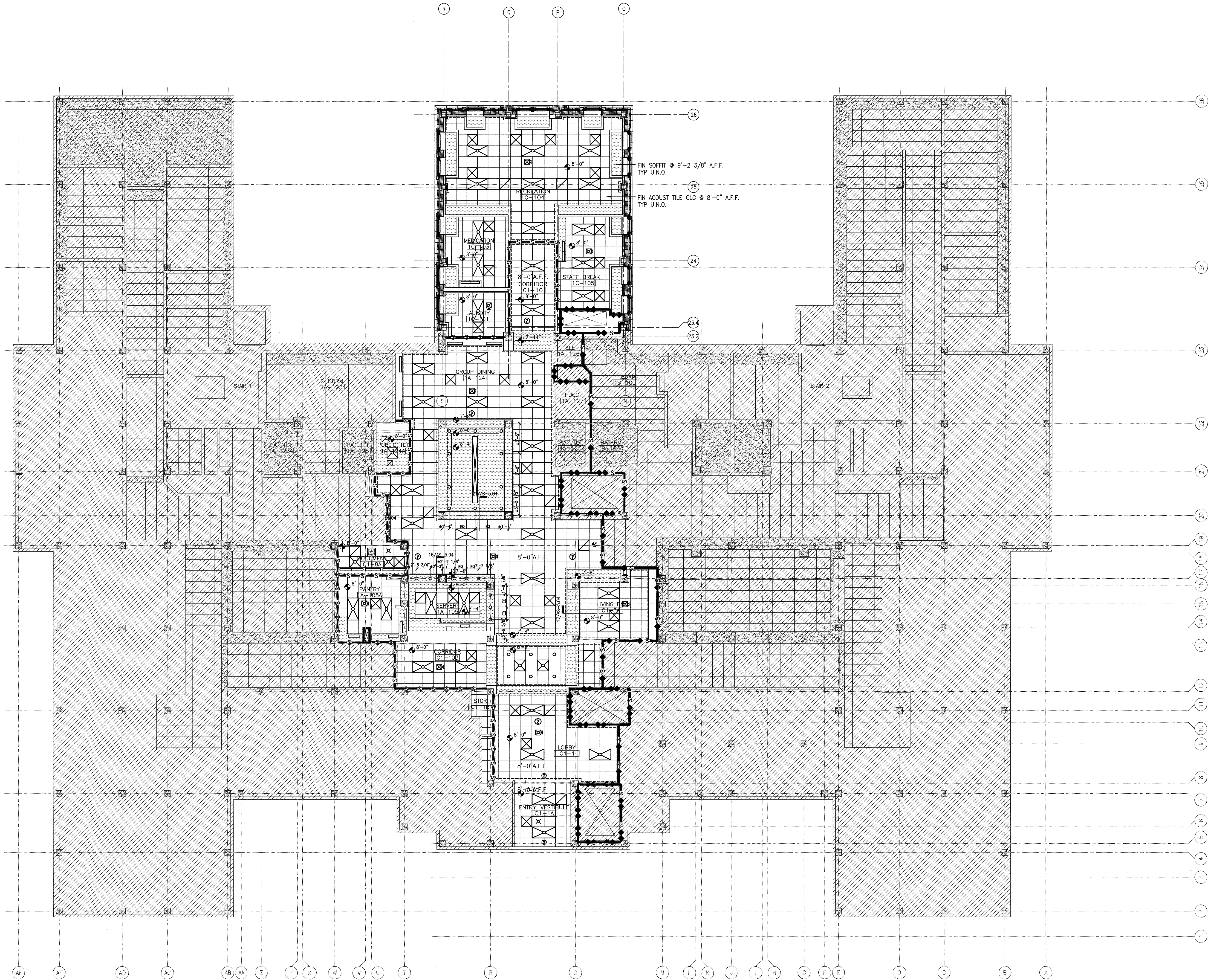


three inches = one foot
one and one half inches = one foot
one inch = one foot
three quarters inch = one foot
one half inch = one foot
one quarter inch = one foot
three eighths inch = one foot
one eighth inch = one foot
one sixteenth inch = one foot



- NEW 2 X 4 FLUOR. LTG. FIXTURE TO MATCH BLDG. STANDARD
- EXISTING 2 X 4 FLUOR. LTG. FIXTURE RELOCATED TO POSITION SHOWN
- EXISTING 2 X 4 FLUOR. LTG. FIXTURE TO REMAIN IN POSITION SHOWN
- NEW 2 X 2 FLUOR. LTG. FIXTURE TO MATCH BUILDING STANDARDS
- EXISTING 2 X 2 FLUOR. LTG. FIXTURE RELOCATED TO POSITION SHOWN
- EXISTING 2 X 2 FLUOR. LTG. FIXTURE TO REMAIN IN POSITION SHOWN
- SUPPLY AIR GRILLE
- RETURN AIR GRILLE
- PERIMETER A/C SLOT
- 4'-0" UNDER-CABINET TASK LIGHTING; COORDINATE W/MEP DWGS AND ELEVATIONS
- NEW WALL WASHER CENTER IN TILE U.N.O.
- NEW BLDG. STND. DOWNLIGHT CENTER IN TILE U.N.O.
- BLDG. STND. DOWNLIGHT RELOCATED TO POSITION SHOWN CENTER IN TILE U.N.O.
- SHADED PORTION INDICATES LIGHTED SIDE
- ARROW INDICATES DIRECTION
- BUILDING STANDARD EXIT LIGHT
- SPEAKER
- SMOKE DETECTOR
- FIRE ALARM CHIME & STROBE
- FIRE ALARM CHIME
- FIRE ALARM STROBE
- INDICATES EXTENT OF CROWN MOULDING

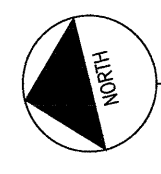
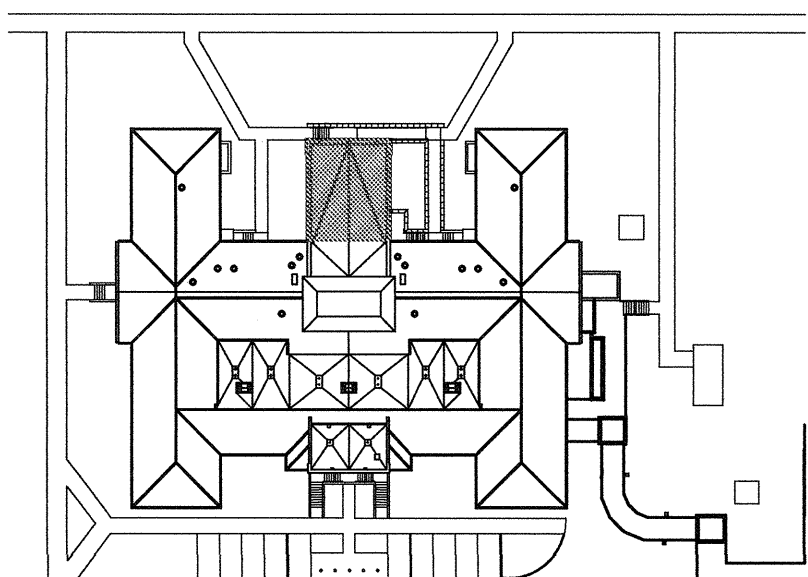
03 RCP SYMBOLS

SCALE: N.T.S.

- REFER TO SHEET 11-AS-1.04 & 11-AS-1.05 FOR FLOOR FINISHES PLANS OF THESE AREAS
- REFER TO SHEET 11-AS-1.06 & 11-AS-1.07 FOR FLOOR EQUIPMENT PLANS OF THESE AREAS
- REFER TO SHEETS 11-AS-3.00 FOR INFORMATION REGARDING TO EXTERIOR BUILDING ELEVATIONS
- GENERAL CONTRACTOR TO PROVIDE NEW CEILING GRID, U.O.N.
- REFER TO ELECTRICAL DRAWINGS FOR CIRCUITING AND SWITCHING OF LIGHTS.
- ADVISE ARCHITECT OF ANY CONFLICTS BETWEEN LIGHTING AND EXISTING OR NEW CONSTRUCTION. DO NOT PROCEED WITH CONSTRUCTION WITHOUT RESOLUTION OF CONFLICT.

02 GENERAL NOTES

SCALE: N.T.S.



KEY PLAN

01 FIRST FLOOR REFLECTED CEILING PLAN

SCALE: 3/16"=1'-0"

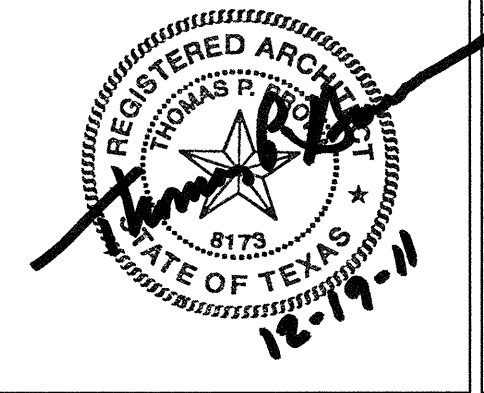
FIN. FLR. = 585.53'



SCHEMATIC DESIGN SUBMISSION	08/02/10
DESIGN DEVELOPMENT SUBMISSION	09/03/10
CONSTRUCTION DOCUMENT SUBMISSION	11/22/10
ISSUED FOR BIDS	12/19/11
Revisions:	Date

CONSULTANTS:

ARCHITECT/ENGINEERS:



WILSON ARCHITECTURAL GROUP
508 WESTHEIMER, SUITE 200 HOUSTON, TEXAS 77056 TELEPHONE (713) 625-5714

MEP ENGINEERS
STRUCTURAL ENGINEERS
FIRE PROTECTION ENGINEERS
CIVIL ENGINEERS

BURNS DeLATTIE AND McCOY, INC.
PINNACLE STRUCTURAL
PROTECTION DEVELOPMENT INC.
BREWER AND ESCALANTE

DO NOT SCALE THESE DRAWINGS. G.C. TO FIELD VERIFY DIMENSIONS

Drawing Title	FIRST FLOOR REFLECTED CEILING PLAN BLDG 11 & NEW ADDITION
Approved Project Director	

Project Title	BUILDING 11 ADDITION & INTERIOR RENOVATIONS
Location	WACO, TEXAS
Date	19 DEC 2011
Checked	
Drawn	
ISSUED FOR BIDS	Project Number 674A4-CSI-516
Building Number	11
Drawing Number	11-AS-1.09
Dwg. of	
FULLY SPRINKLERED	Office of Construction and Facilities Management
	Department of Veterans Affairs