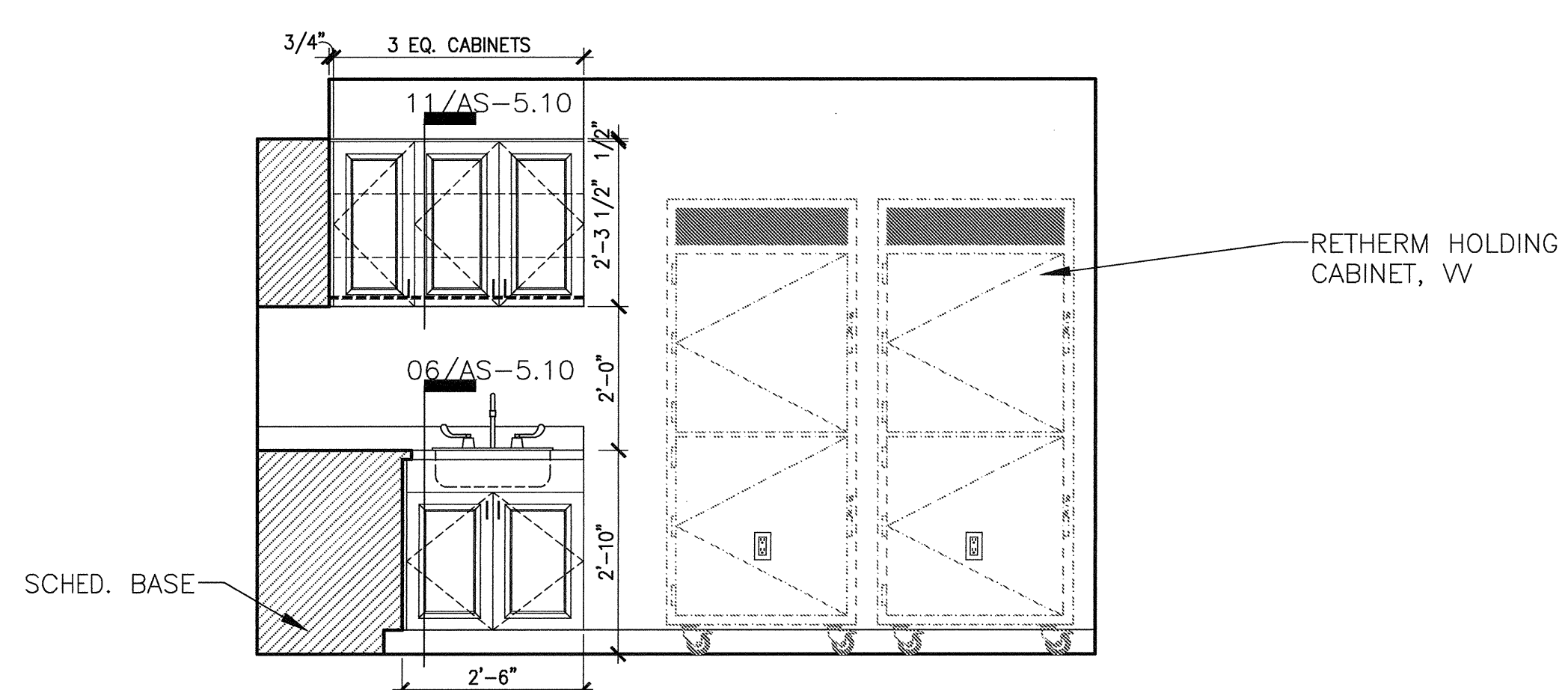
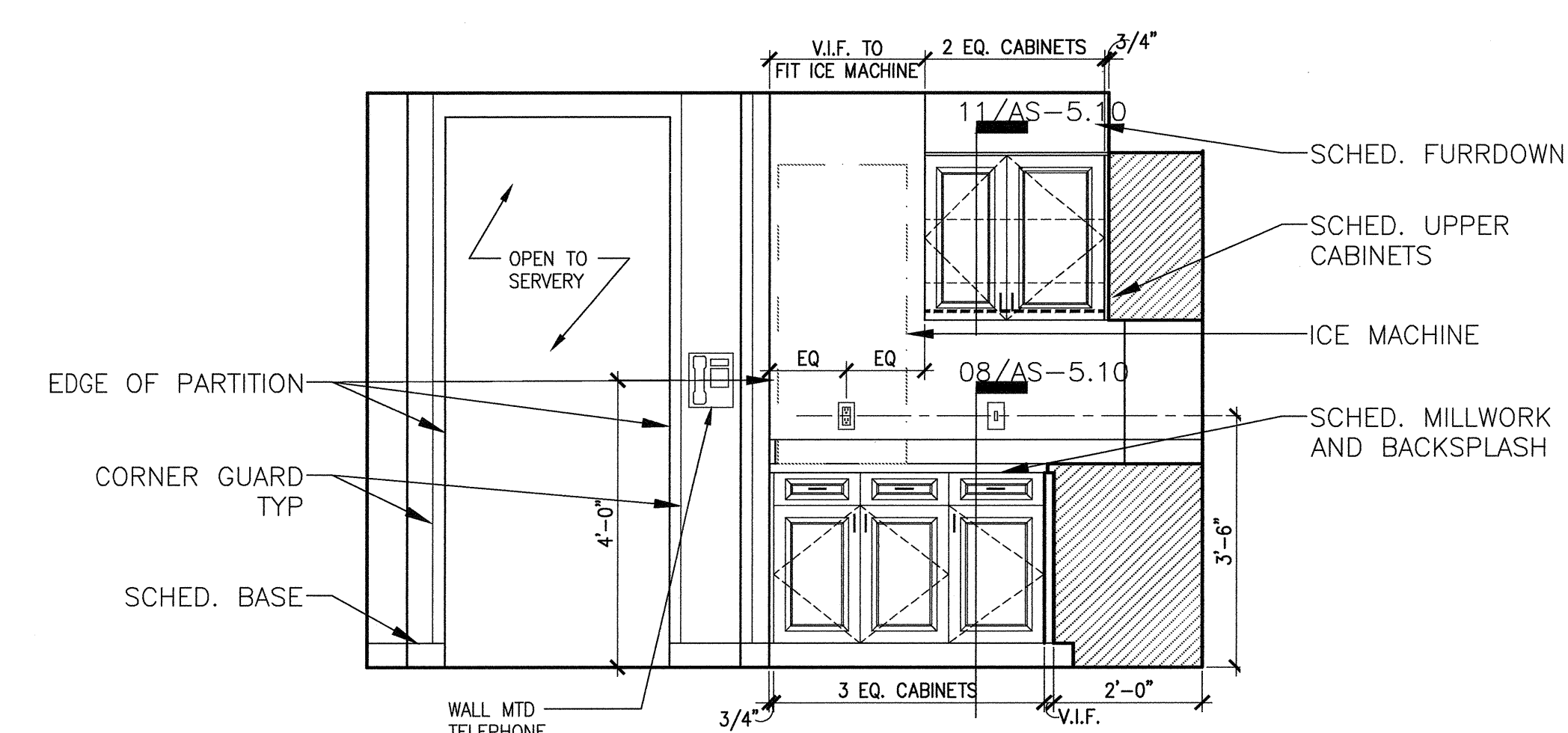


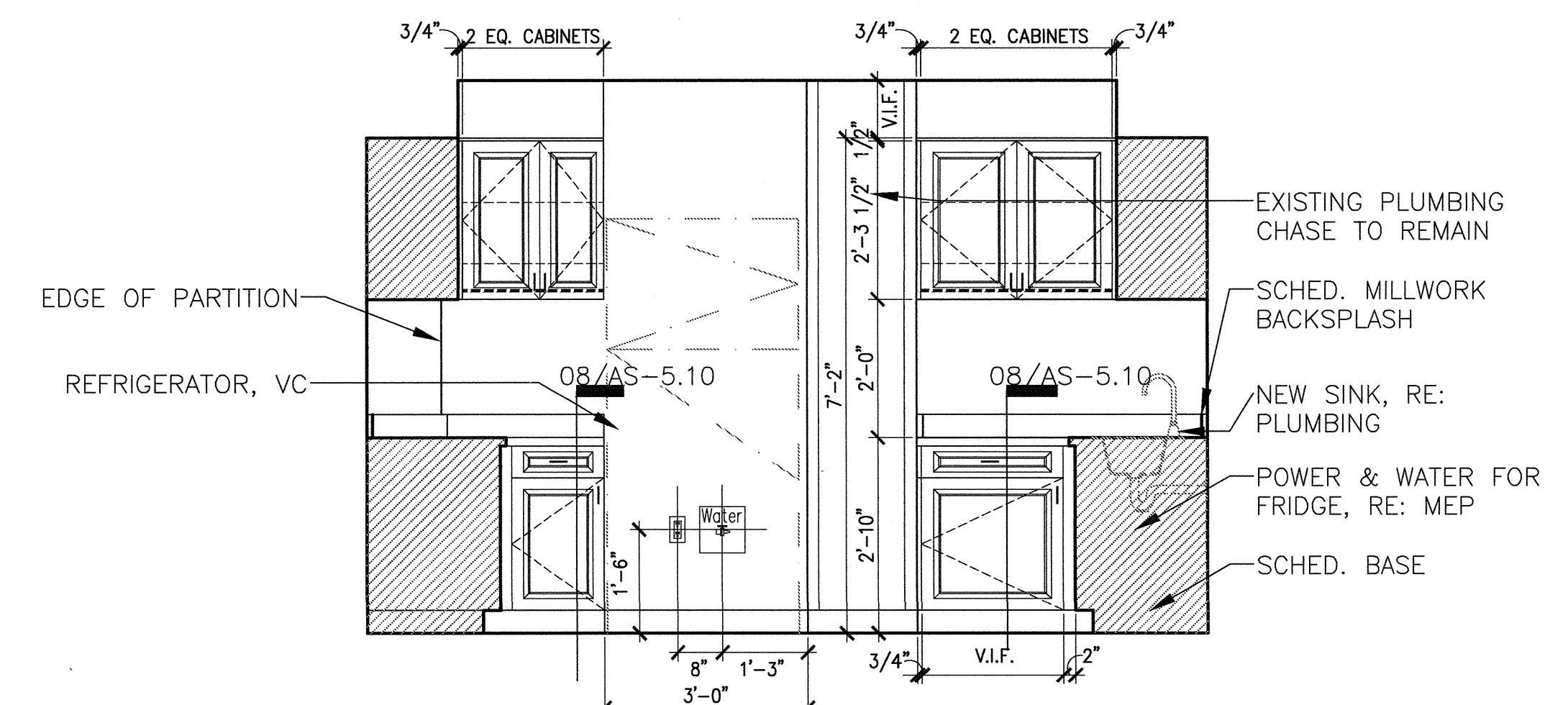
three eighths inch = one foot  
one eighth inch = one foot  
one quarter inch = one foot  
one half inch = one foot  
one inch = one foot  
one and one half inches = one foot  
two inches = one foot  
three inches = one foot



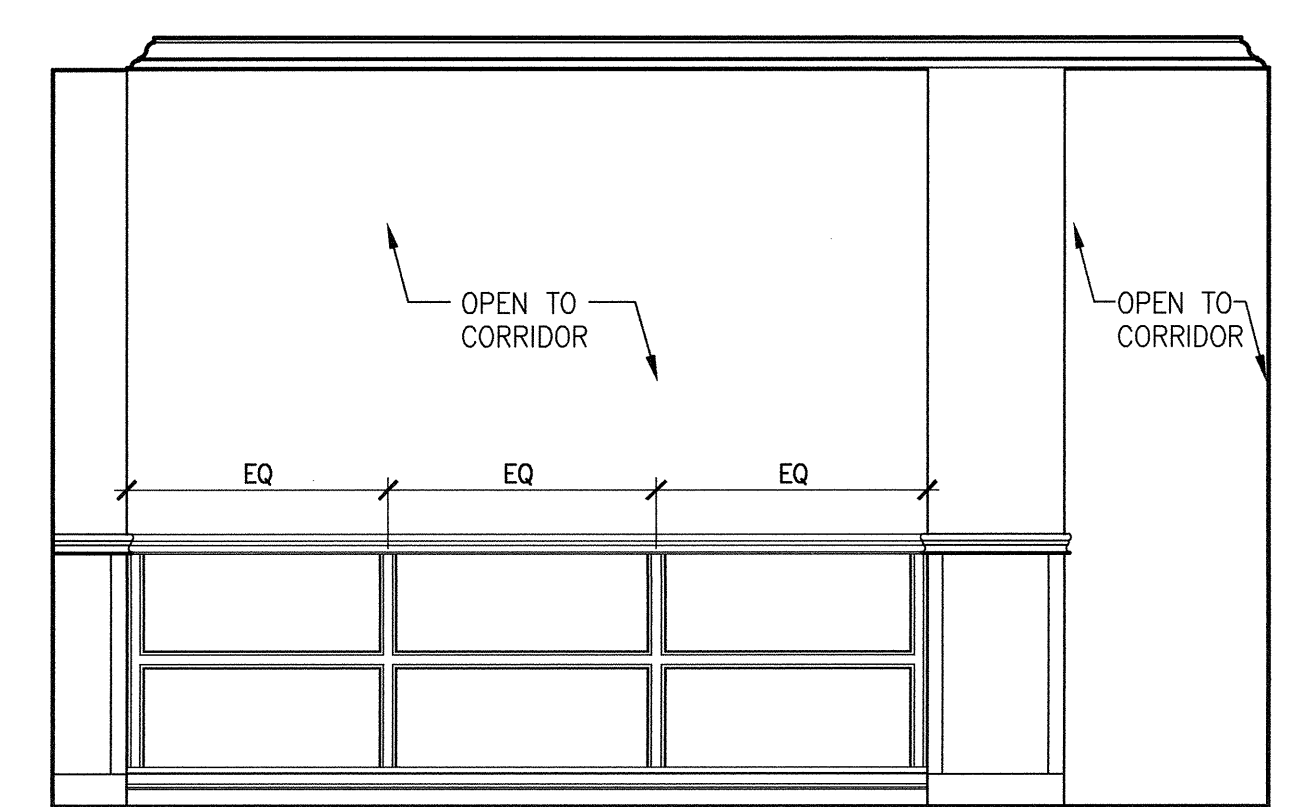
29 PANTRY  
SCALE: 1/2"=1'-0"



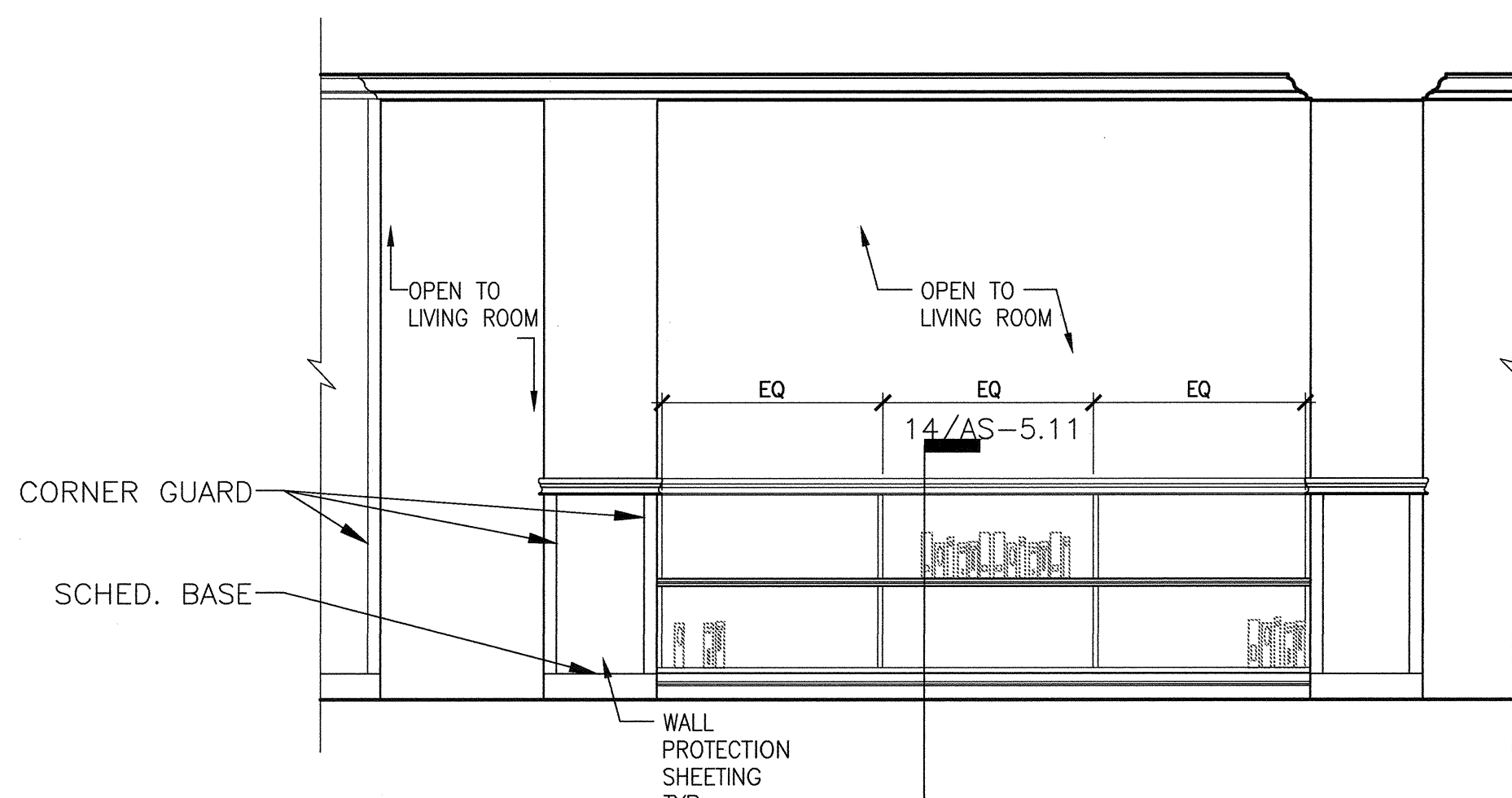
27 PANTRY  
SCALE: 1/2"=1'-0"



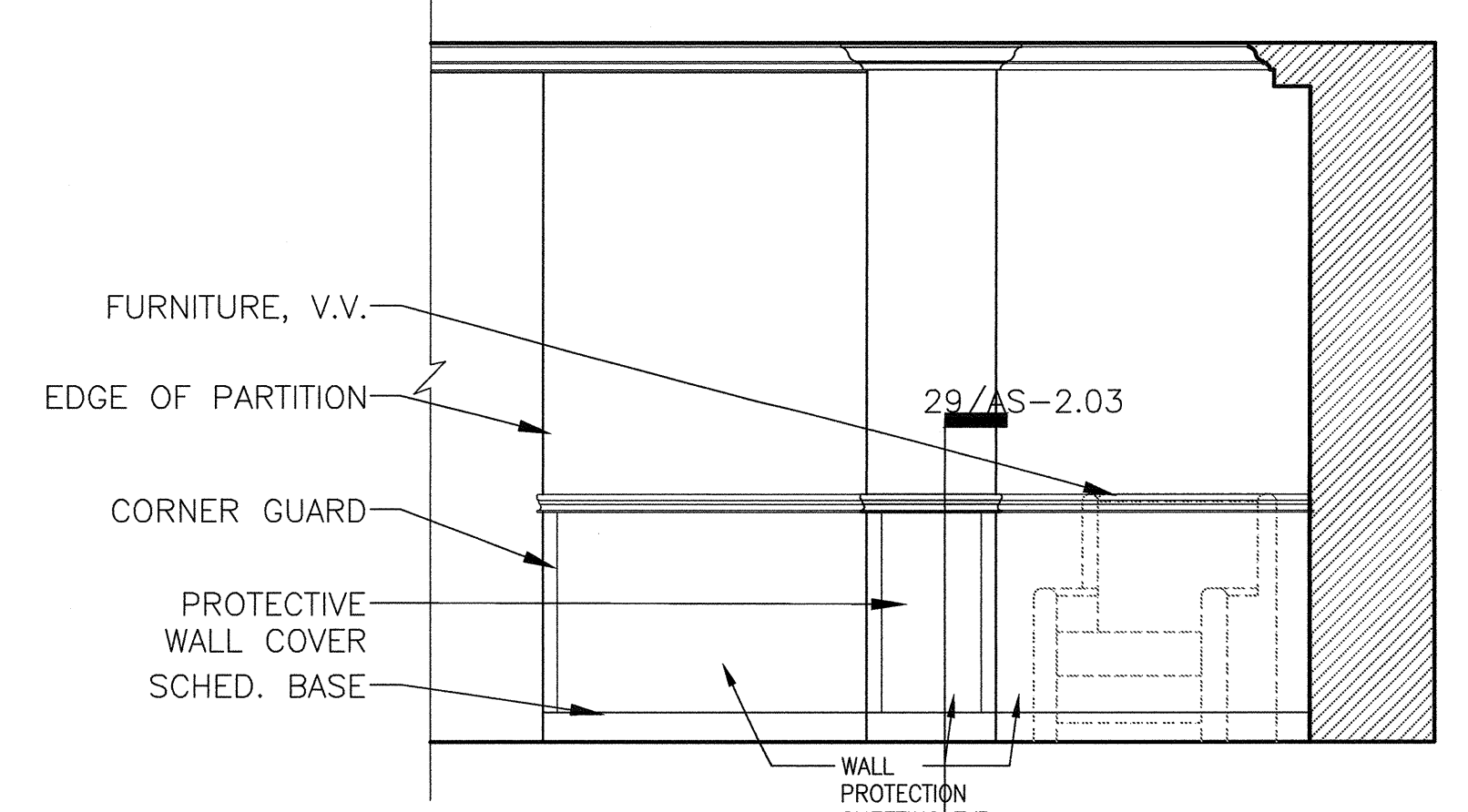
26 PANTRY  
SCALE: 1/2"=1'-0"



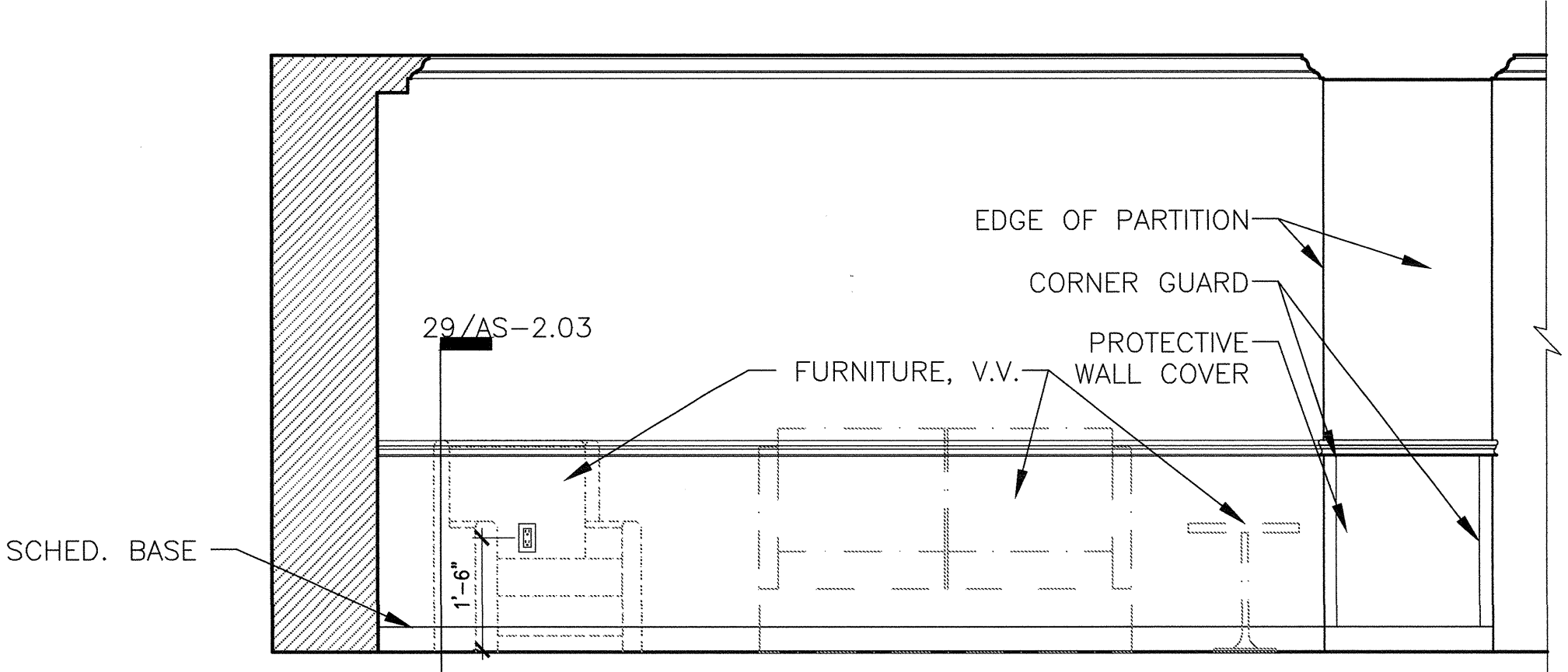
20 LIVING ROOM  
SCALE: 1/2"=1'-0"



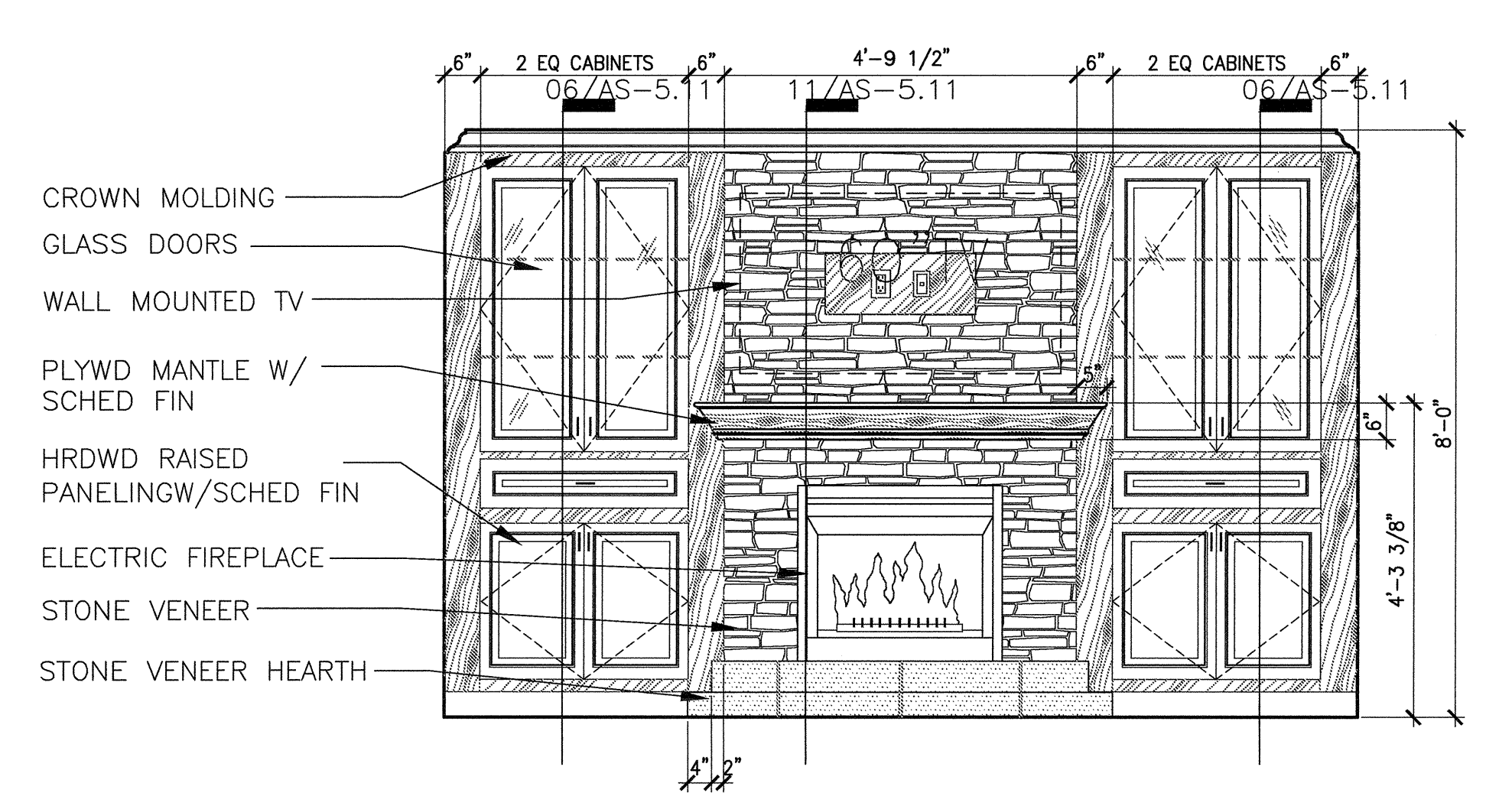
19 LIVING ROOM  
SCALE: 1/2"=1'-0"



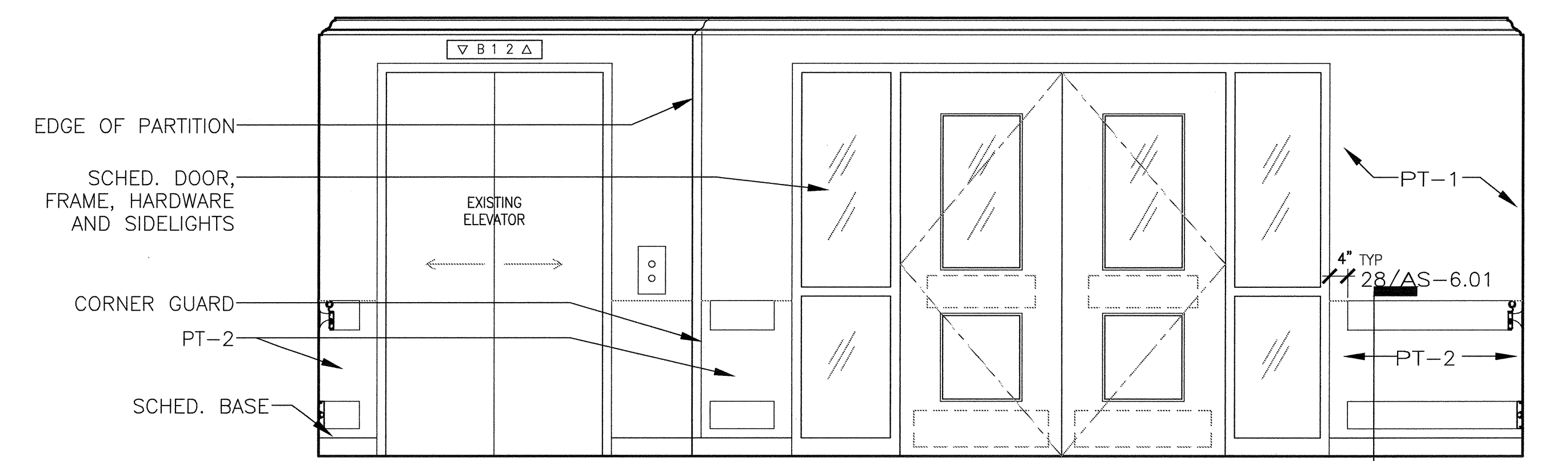
17 LIVING ROOM  
SCALE: 1/2"=1'-0"



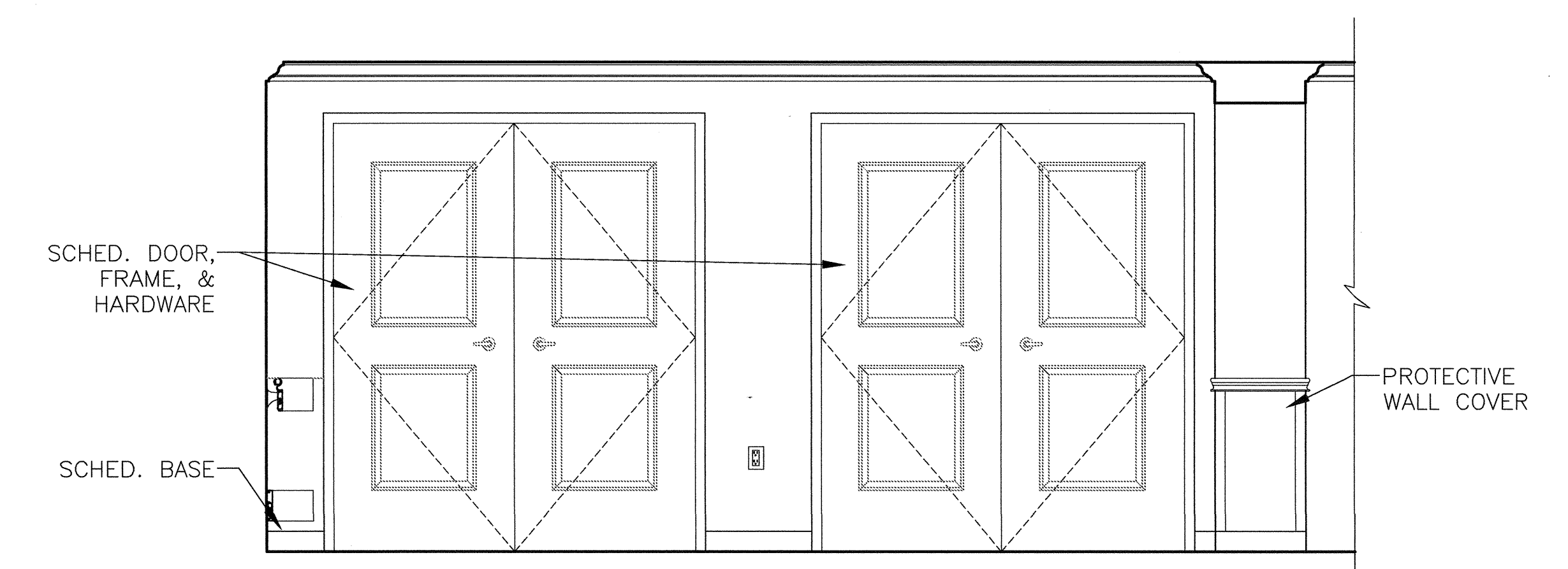
16 LIVING ROOM  
SCALE: 1/2"=1'-0"



09 LIVING ROOM  
SCALE: 1/2"=1'-0"



07 ENTRANCE  
SCALE: 1/2"=1'-0"



06 STORAGE CLOSET  
SCALE: 1/2"=1'-0"

SCHEMATIC DESIGN SUBMISSION 08/02/10		CONSULTANTS:		ARCHITECT/ENGINEERS:		DO NOT SCALE THESE DRAWINGS. G.C. TO FIELD VERIFY DIMENSIONS		Project Title		ISSUED FOR BIDS		Office of Construction and Facilities Management Department of Veterans Affairs	
DESIGN DEVELOPMENT SUBMISSION 09/03/10				WILSON ARCHITECTURAL GROUP		INTERIOR ELEVATIONS - FIRST & SECOND FLOORS		BUILDING 11 ADDITION & INTERIOR RENOVATIONS		Project Number 674A4-CSI-516			
CONSTRUCTION DOCUMENT SUBMISSION 11/22/10				508 WESTHEIMER, SUITE 200 HOUSTON, TEXAS 77056 TELEPHONE 713 621-6714		Approved Project Director		Location WACO, TEXAS		Building Number 11			
ISSUED FOR BIDS 12/19/11				MEP ENGINEERS STRUCTURAL ENGINEERS FIRE PROTECTION ENGINEERS CIVIL ENGINEERS		BURNS DeLATTIE AND MCCOY, INC. PINNACLE STRUCTURAL PROTECTION DEVELOPMENT INC. BREWER AND ESCALANTE		Date 19 DEC 2011		Drawing Number 11-AS-2.07			
Revisions		Date						Checked		Draw		Dwg. of	

VA FORM 08-6231