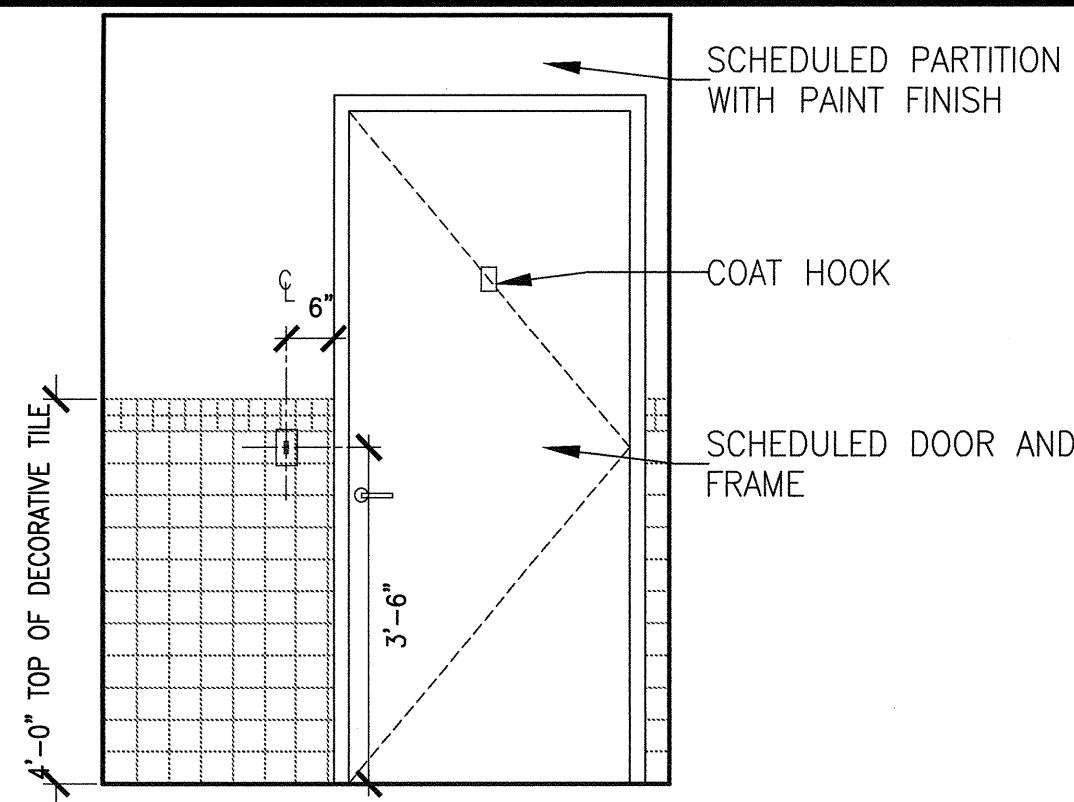
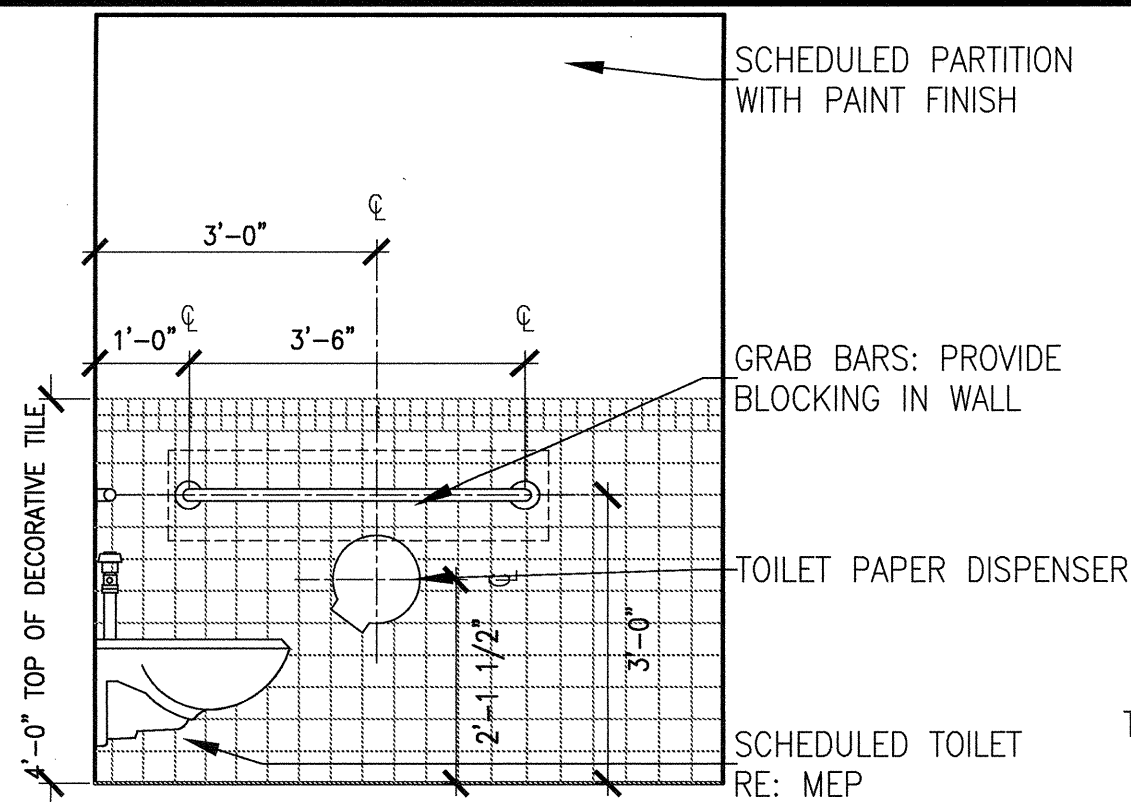


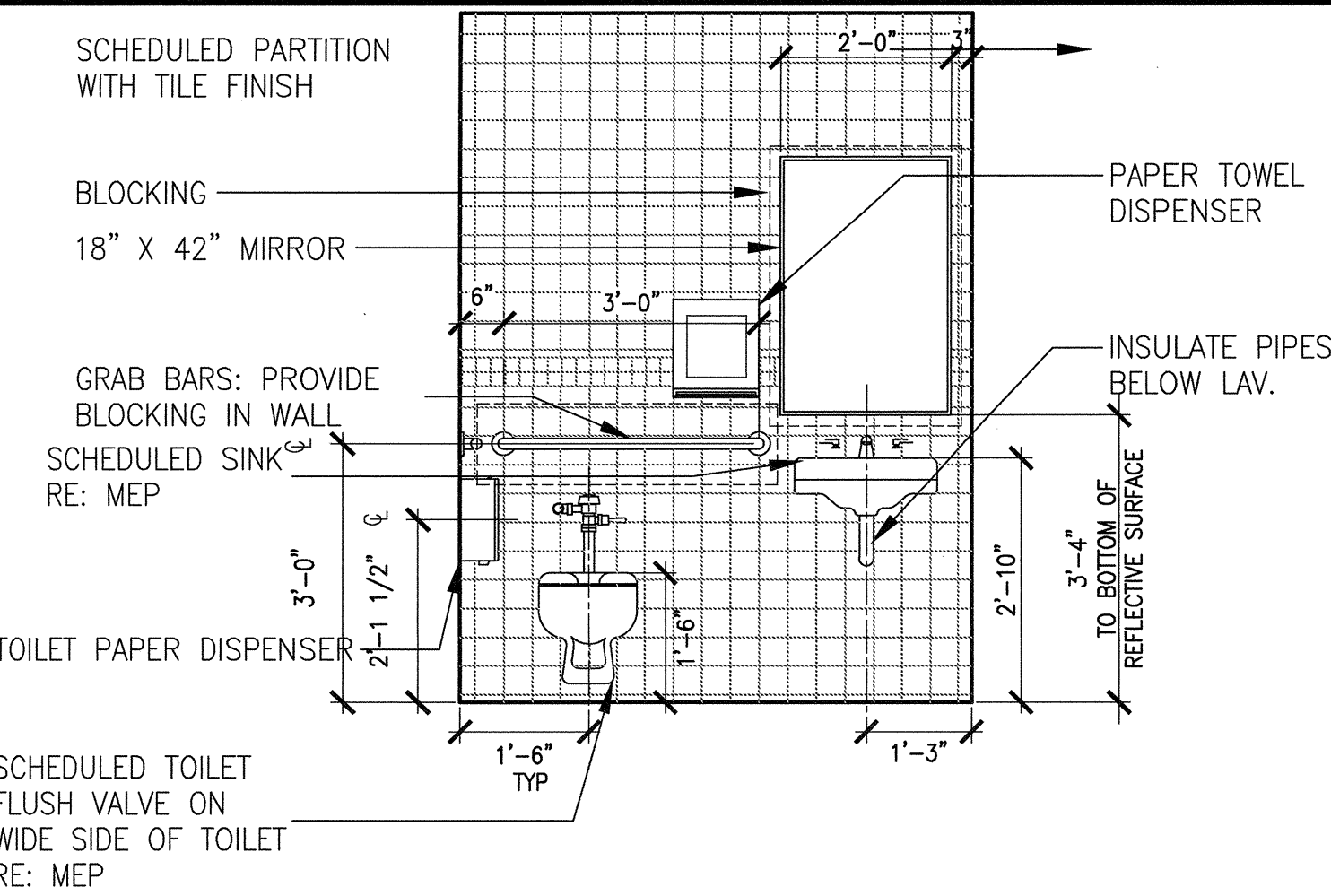
three inches = one foot  
one and one half inches = one foot  
one inch = one foot  
three quarters inch = one foot  
one half inch = one foot  
one quarter inch = one foot  
three eighths inch = one foot  
one eighth inch = one foot  
one sixteenth inch = one foot



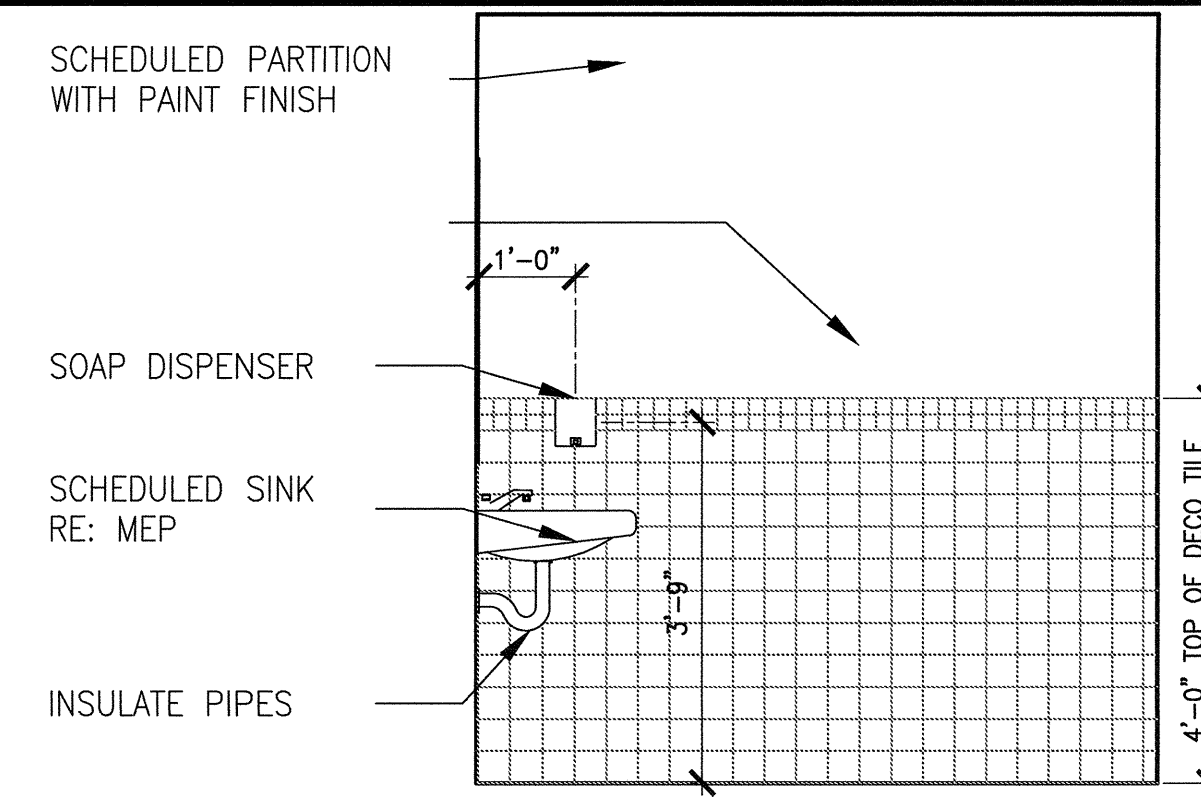
29 VISITOR TOILET  
SCALE: 1/2" = 1'-0"



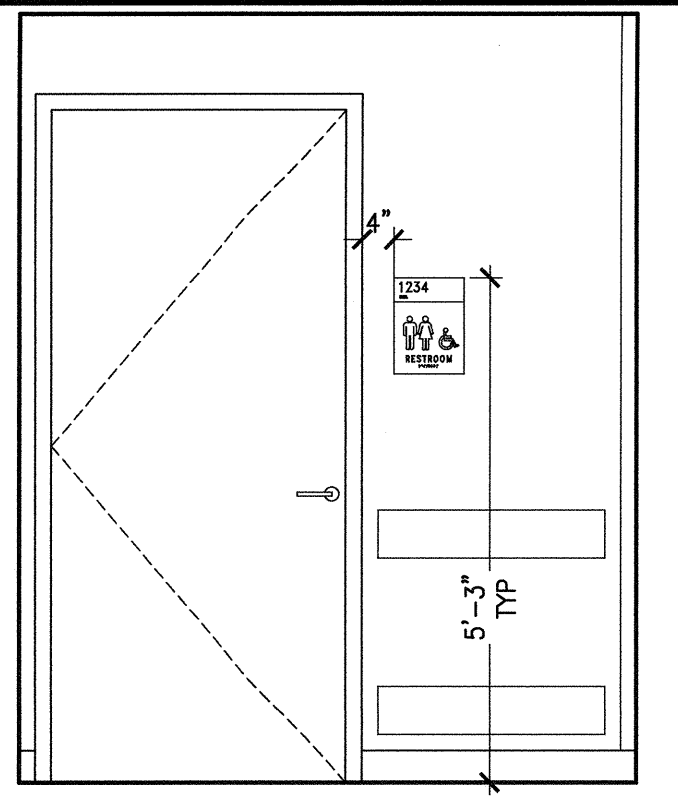
24 VISITOR TOILET  
SCALE: 1/2" = 1'-0"



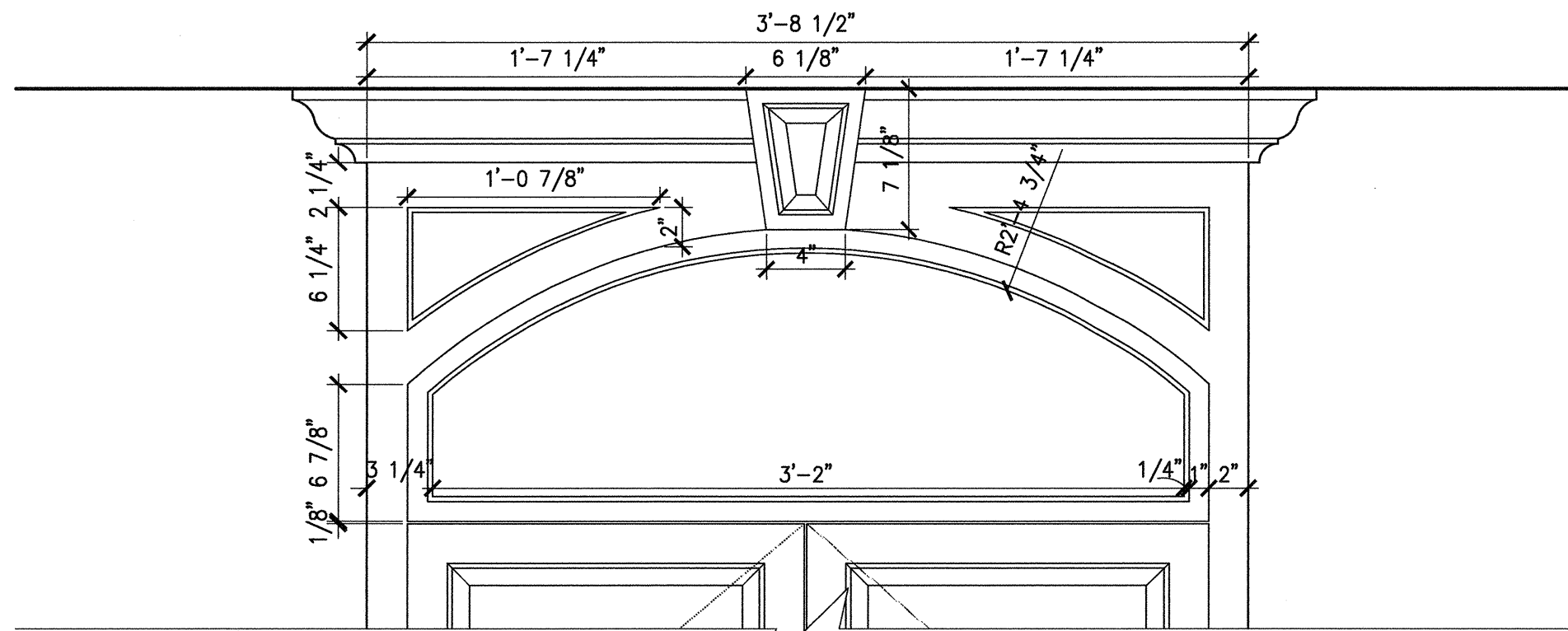
19 VISITOR TOILET  
SCALE: 1/2" = 1'-0"



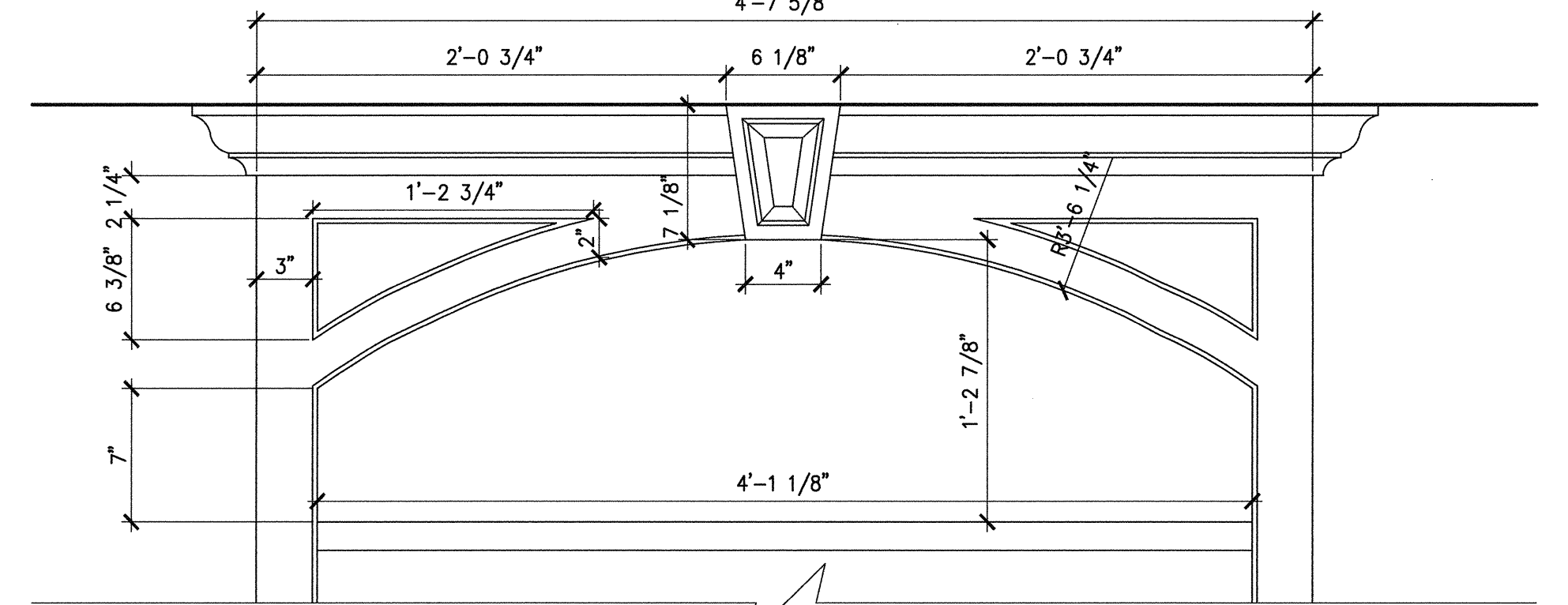
09 VISITOR TOILET  
SCALE: 1/2" = 1'-0"



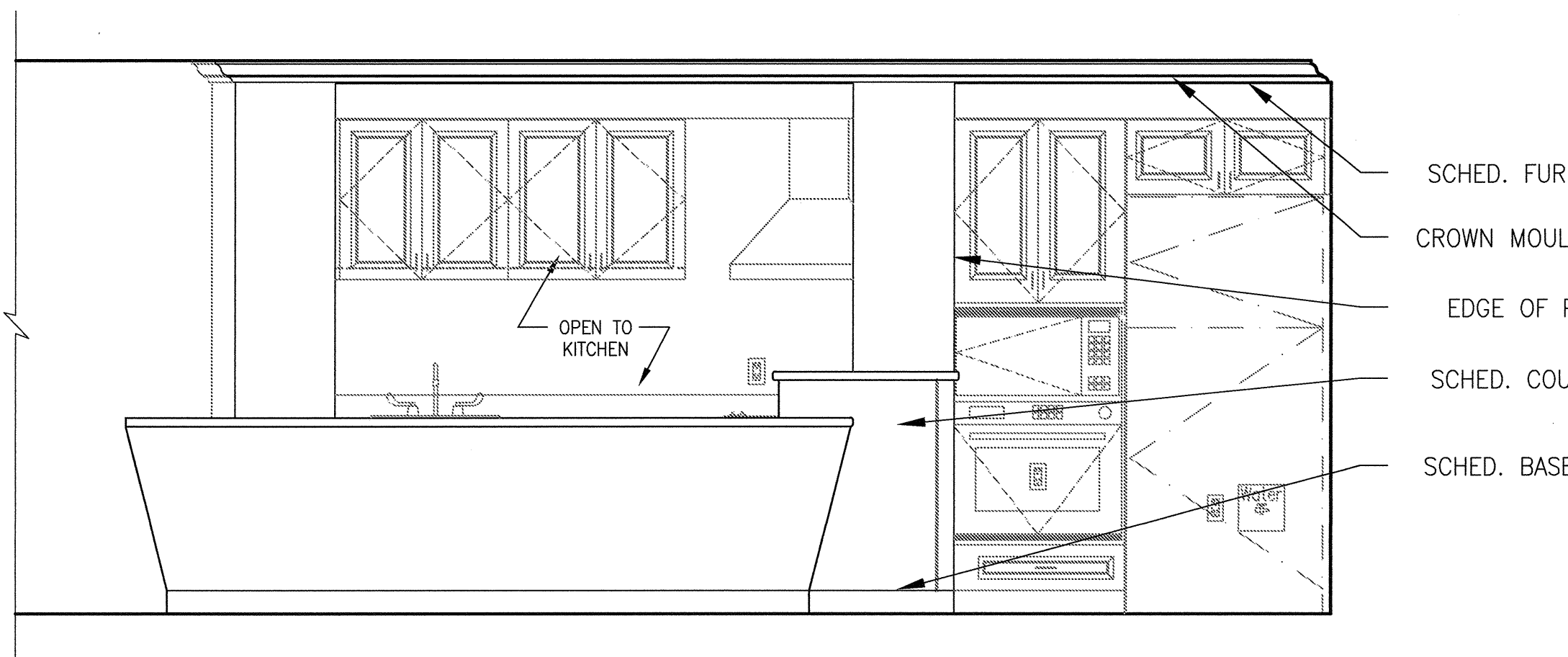
04 VISITOR TOILET  
SCALE: 1/2" = 1'-0"



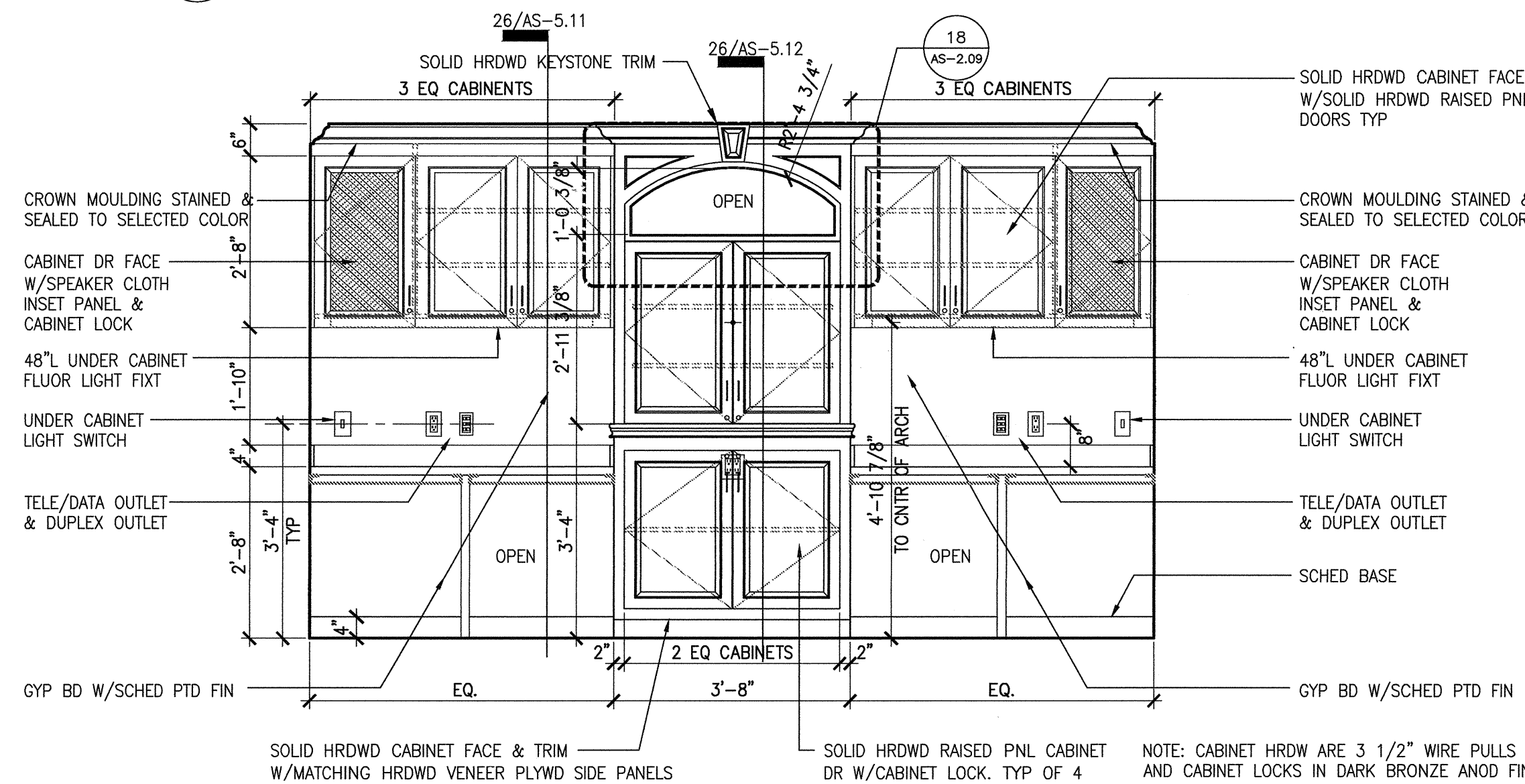
18 DETAIL OF ENTERTAINMENT/WORK CABINET  
SCALE: 1/2" = 1'-0"



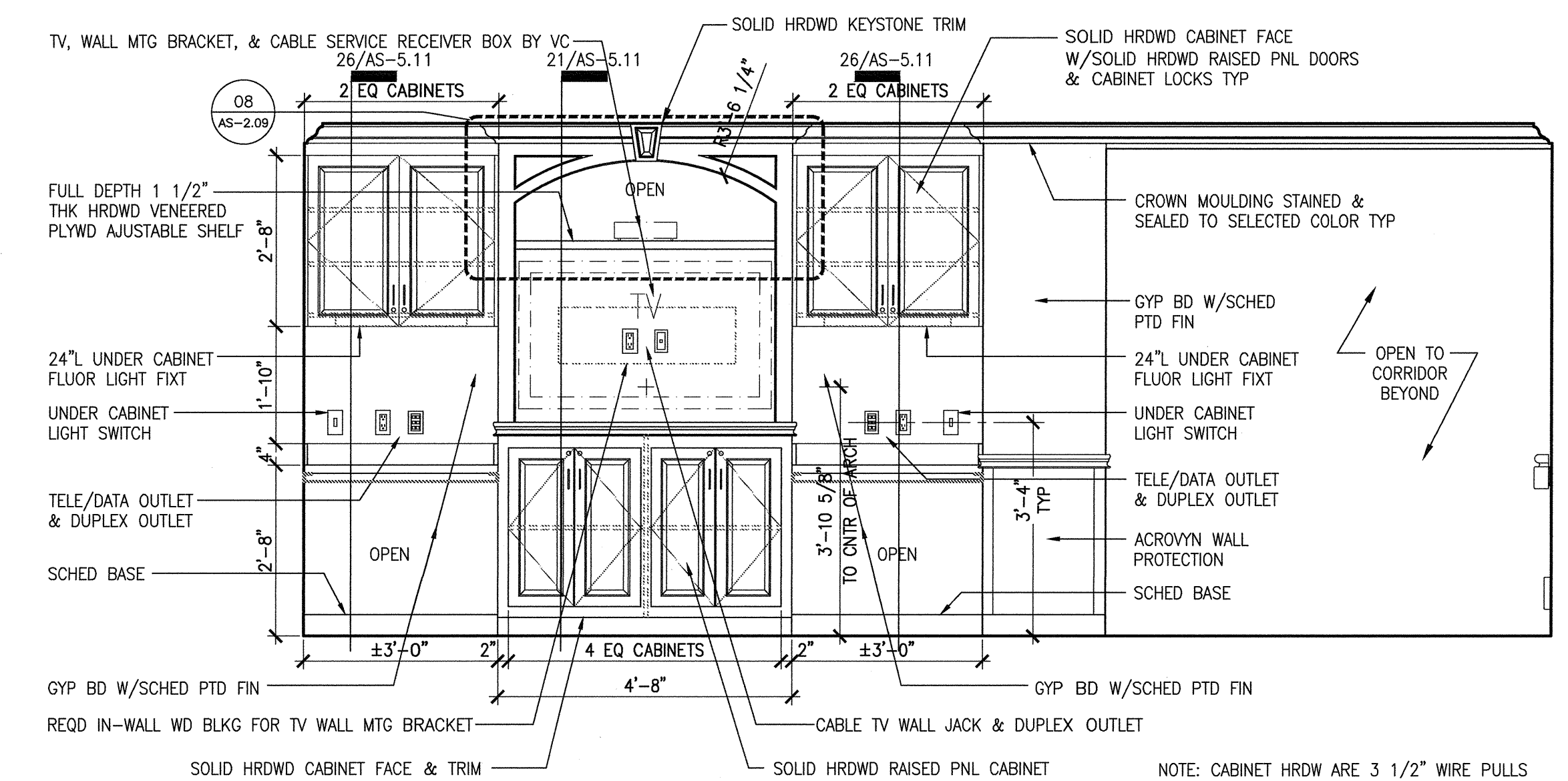
08 DETAIL OF TV/WORK CABINET  
SCALE: 1/2" = 1'-0"



27 SERVERY  
SCALE: 1/2" = 1'-0"



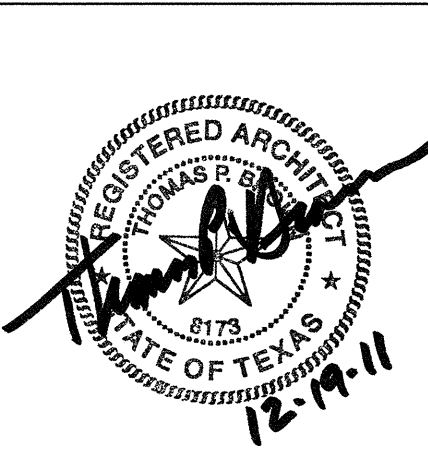
17 ENTERTAINMENT/WORK AREA  
SCALE: 1/2" = 1'-0"



07 TV/WORK AREA  
SCALE: 1/2" = 1'-0"

SCHEMATIC DESIGN SUBMISSION	08/02/10
DESIGN DEVELOPMENT SUBMISSION	09/03/10
CONSTRUCTION DOCUMENT SUBMISSION	11/22/10
ISSUED FOR BIDS	12/19/11
Revisions:	Date

CONSULTANTS:



ARCHITECT/ENGINEERS:

**WILSON ARCHITECTURAL GROUP**  
508 WESTHEIMER, SUITE 200 HOUSTON, TEXAS 77068 TELEPHONE (713) 621-5714  
MEP ENGINEERS  
STRUCTURAL ENGINEERS  
FIRE PROTECTION ENGINEERS  
CIVIL ENGINEERS  
BURNS DeLATTIE AND MCCOY, INC.  
PINNACLE STRUCTURAL  
PROTECTION DEVELOPMENT INC.  
BREWER AND ESCALANTE

DO NOT SCALE THESE DRAWINGS. G.C. TO FIELD VERIFY DIMENSIONS

Drawing Title  
INTERIOR ELEVATIONS - BASEMENT,  
FIRST, & SECOND FLOORS

Approved Project Director

Project Title  
BUILDING 11 ADDITION &  
INTERIOR RENOVATIONS

Location  
WACO, TEXAS

Date  
19 DEC 2011

Checked  
Drawn

ISSUED FOR BIDS  
Project Number  
674A4-CSJ-516  
Building Number  
11  
Drawing Number  
11-AS-2.09  
Dwg. of

FULLY SPRINKLERED  
Office of  
Construction  
and Facilities  
Management  
Department of  
Veterans Affairs