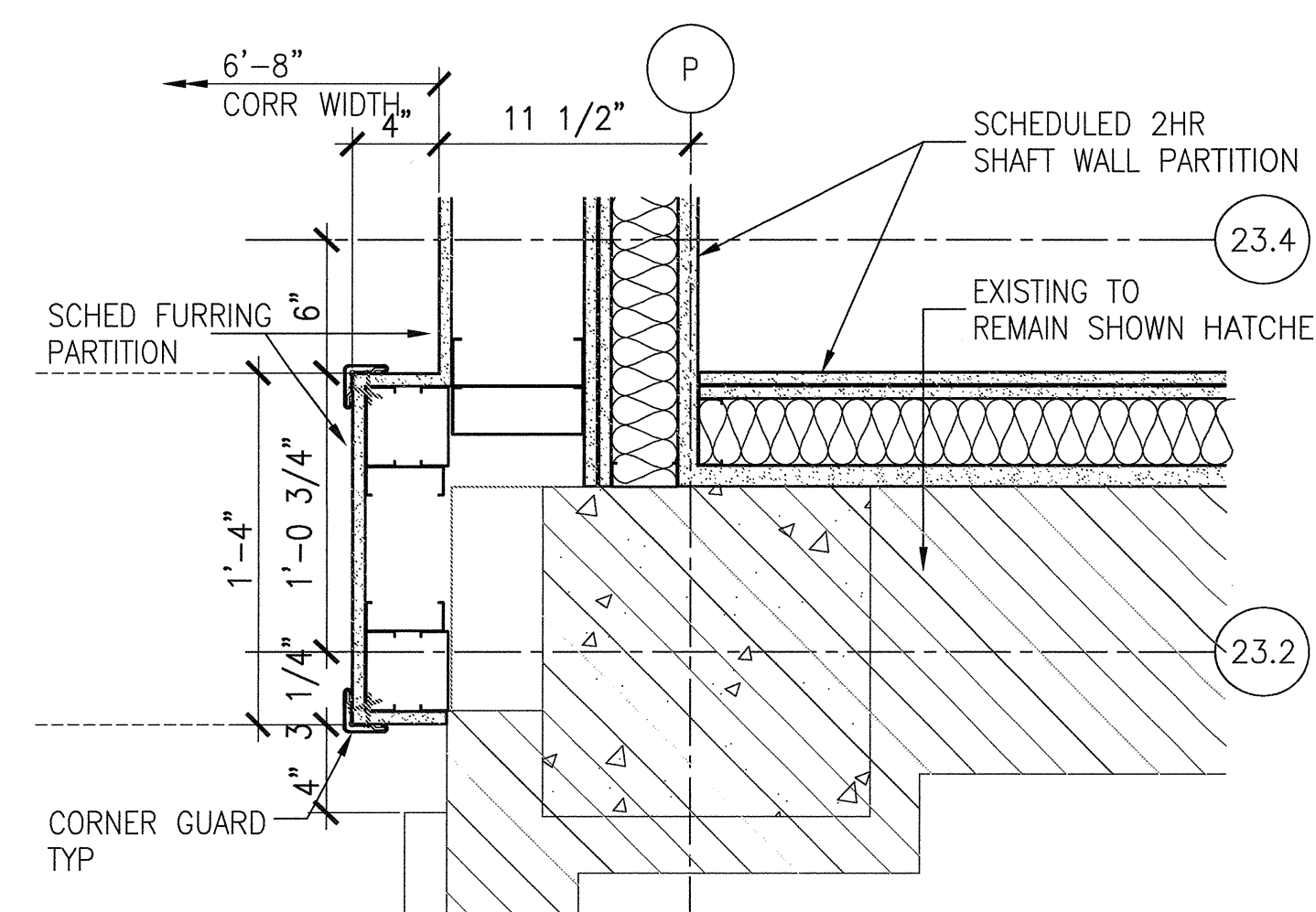
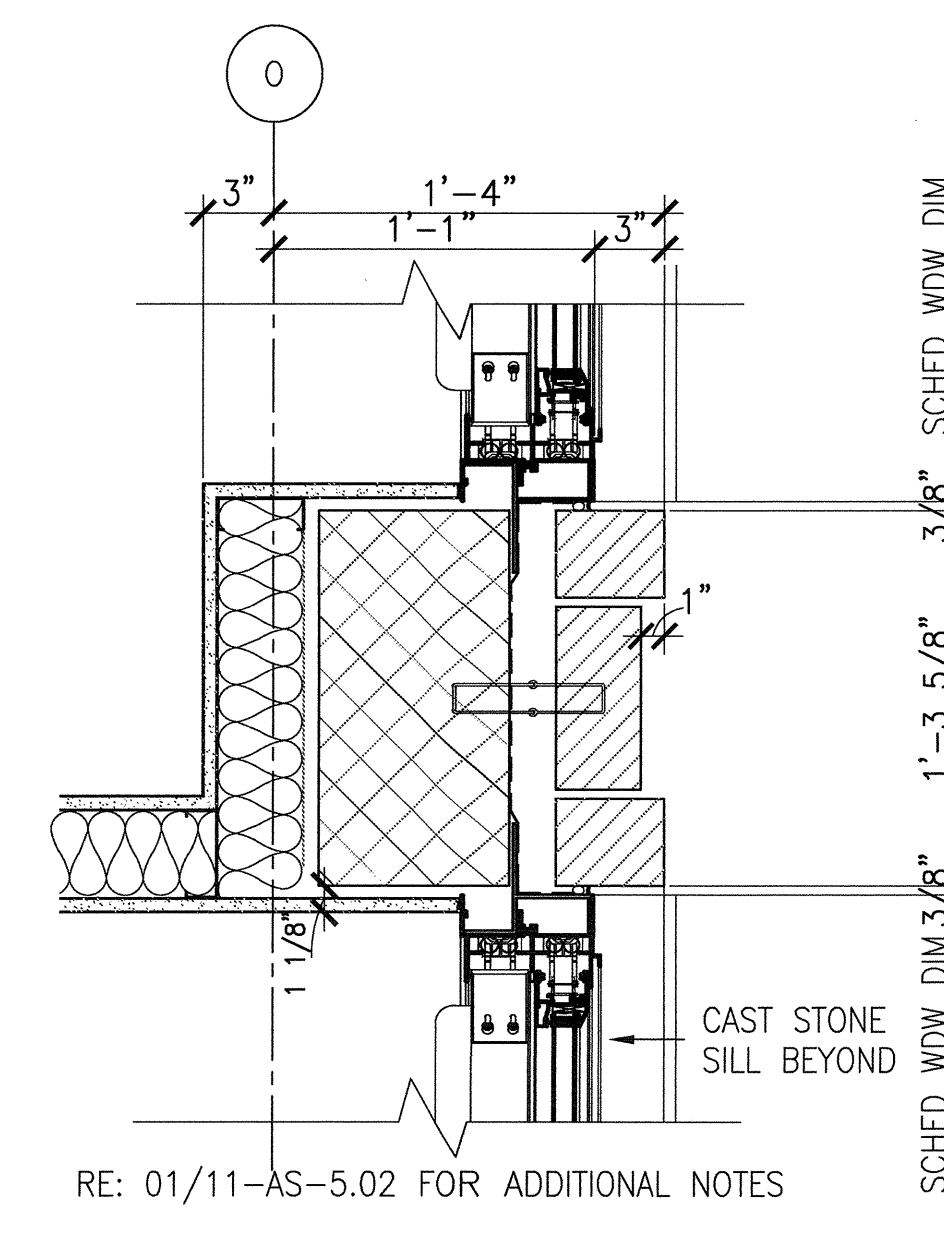
[illegible]

RE: 01/11-AS-5.02 FOR ADDITIONAL NOTES



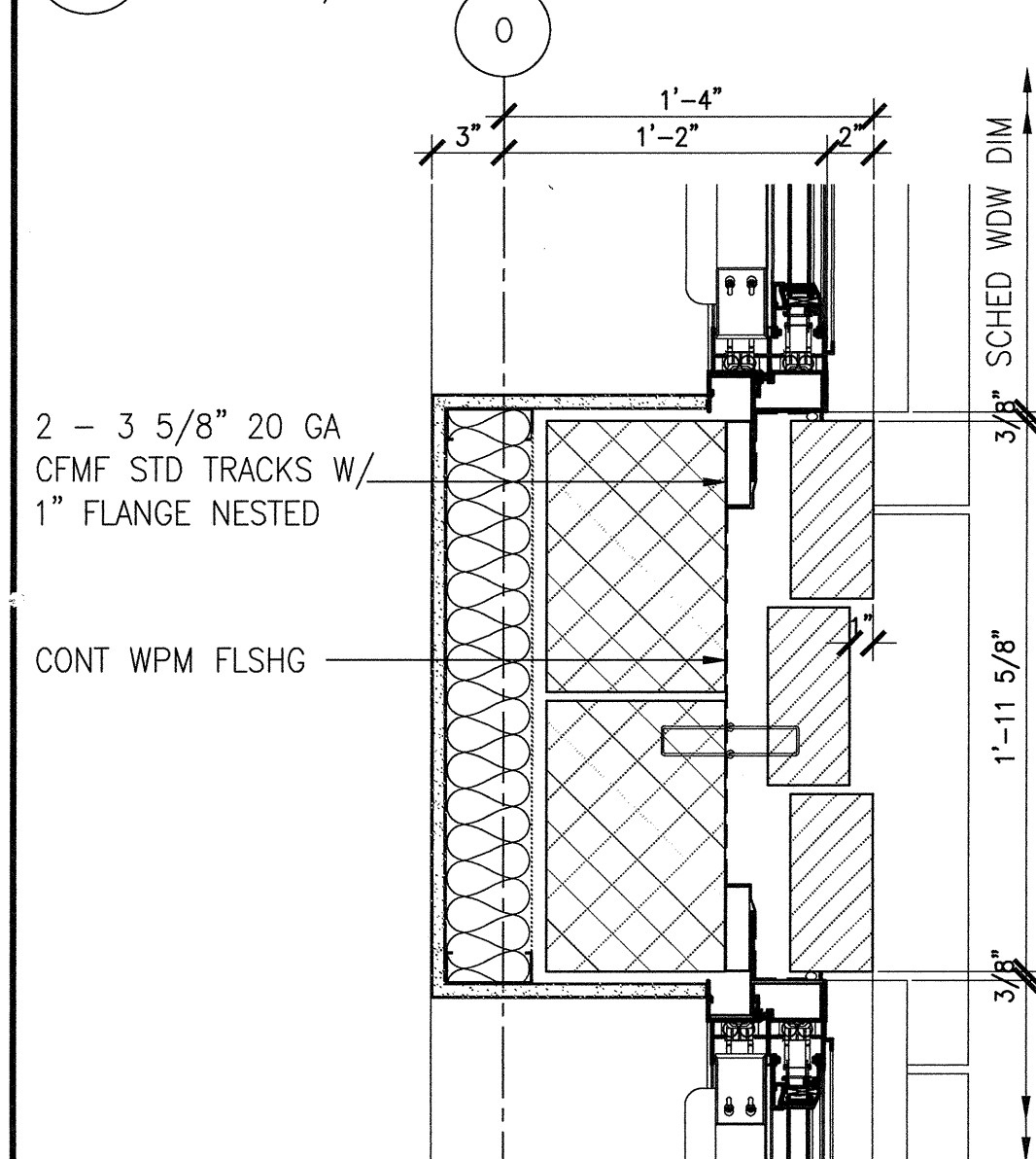
RE: 01/11-AS-5.02 FOR ADDITIONAL NOTES



REF: 01/11-AS-5.02 FOR ADDITIONAL NOTES

18 DETAIL AT EXISTING - BSMNT  
SCALE: 1-1/2"=1'-0"

SCALE: 1-1/2"=1'-0"

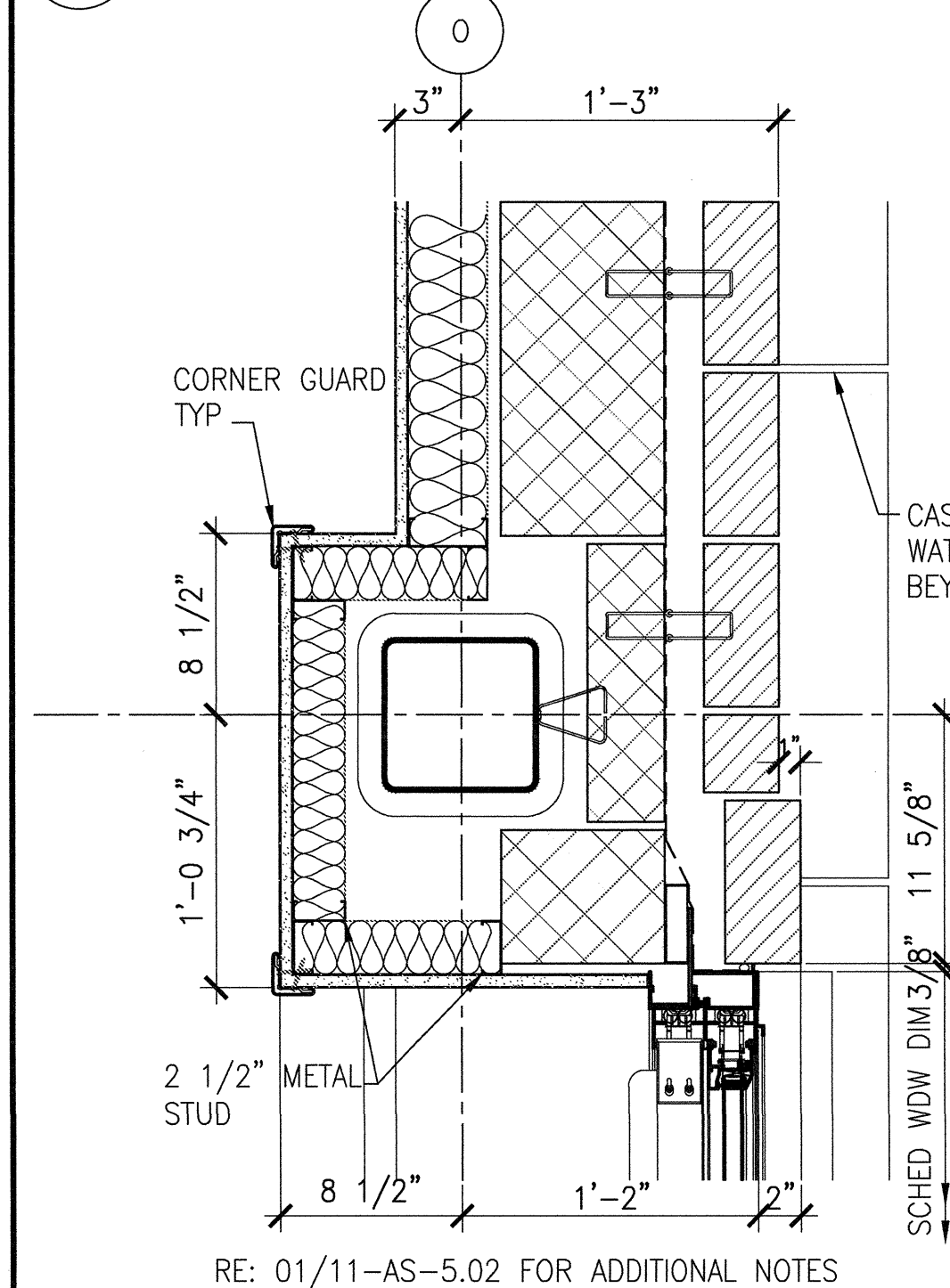


Technical drawing of a window assembly cross-section. The drawing shows a window unit with a frame and sash, set within a wall. Key dimensions and components are labeled:

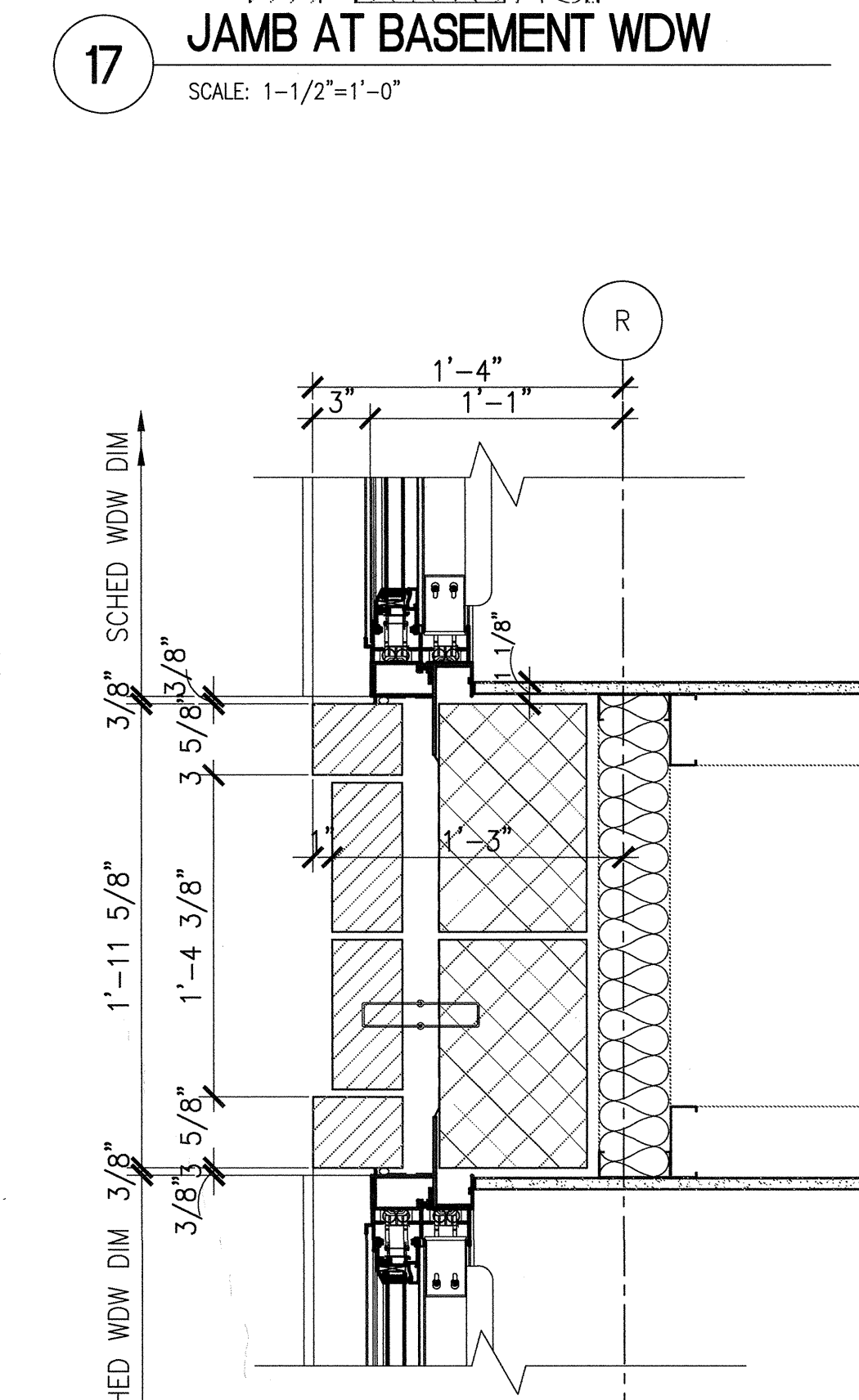
- Window Unit Dimensions:**
  - Top width: 1'-4"
  - Bottom width: 1'-1"
  - Left side height: 3"
  - Right side height: 1/8"
- Wall and Frame Dimensions:**
  - Top wall thickness: 3/8" SCHED WDW DIM
  - Right wall thickness: 11 3/4"
  - Bottom wall thickness: 8 1/2"
  - Bottom wall thickness: 8 1/2"
  - Bottom wall thickness: 8 1/2"
- Components and Details:**
  - Window frame and sash are shown with internal components like springs and rollers.
  - A "2 1/2" METAL STUD" is indicated at the bottom right.
  - A circular detail "R" is shown at the top right.
  - A circular detail "25" is shown at the bottom left.

14 DETAIL AT EXISTING - BSMNT  
SCALE: 1-1/2"=1'-0"

SCALE: 1-1/2"=1'-0"

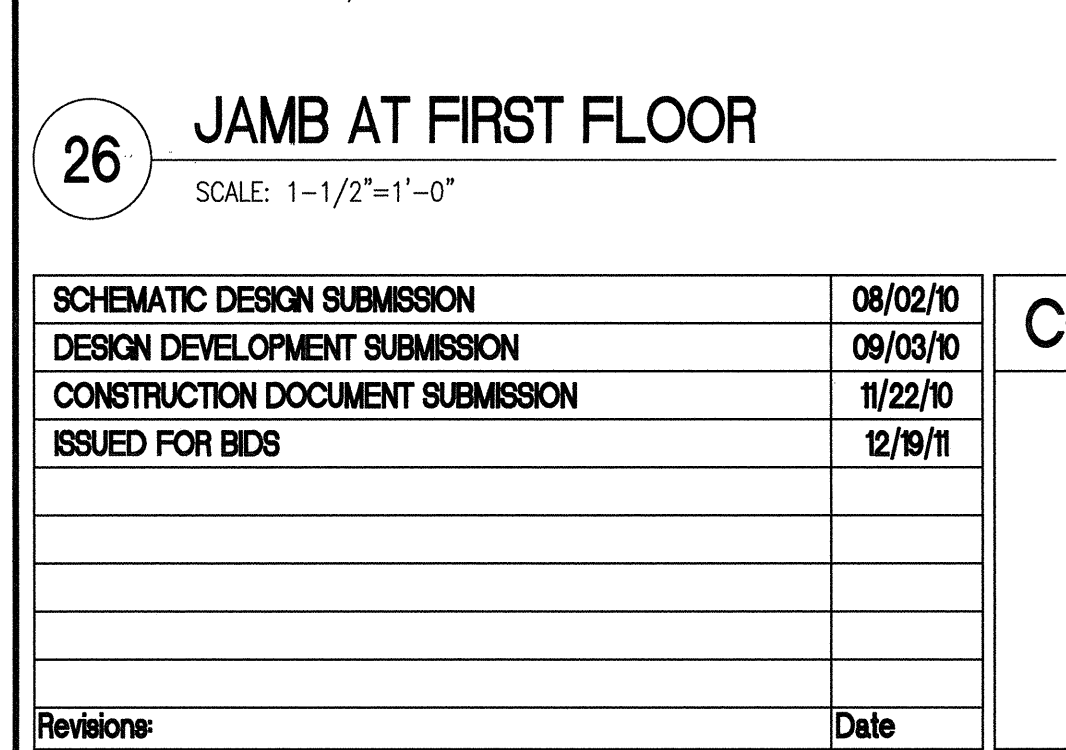


22 DETAIL AT FIRST FLOOR (EAST)  
SCALE: 1-1/2"=1'-0"

SCALE:  $1-1/2^m = 1' - 0^m$ 

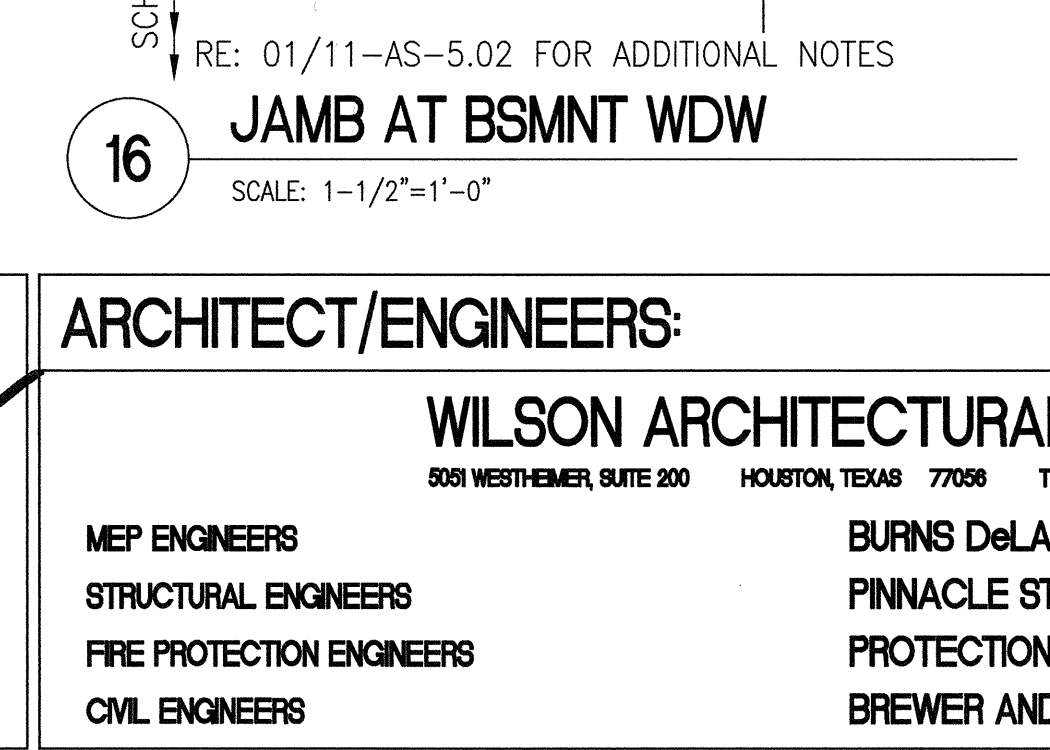
**12** DETAIL AT EXISTING BASEMENT  
SCALE: 1-1/2"=1'-0"

SCALE: 1-1/2"=1'-0"



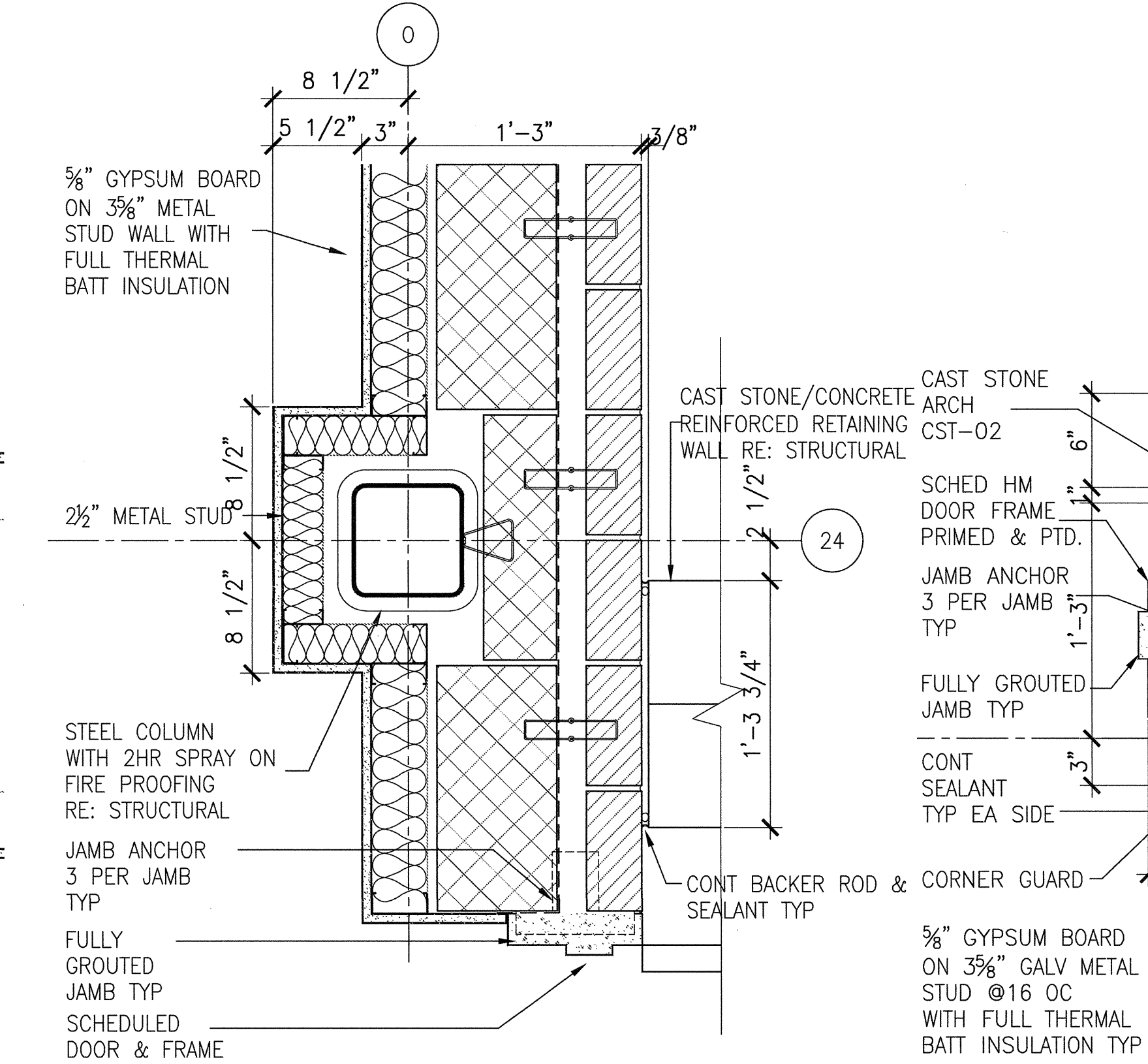
21 DETAIL AT FIRST FLOOR (EAST)  
SCALE: 1/4"=1'-0"

DETAIL AT



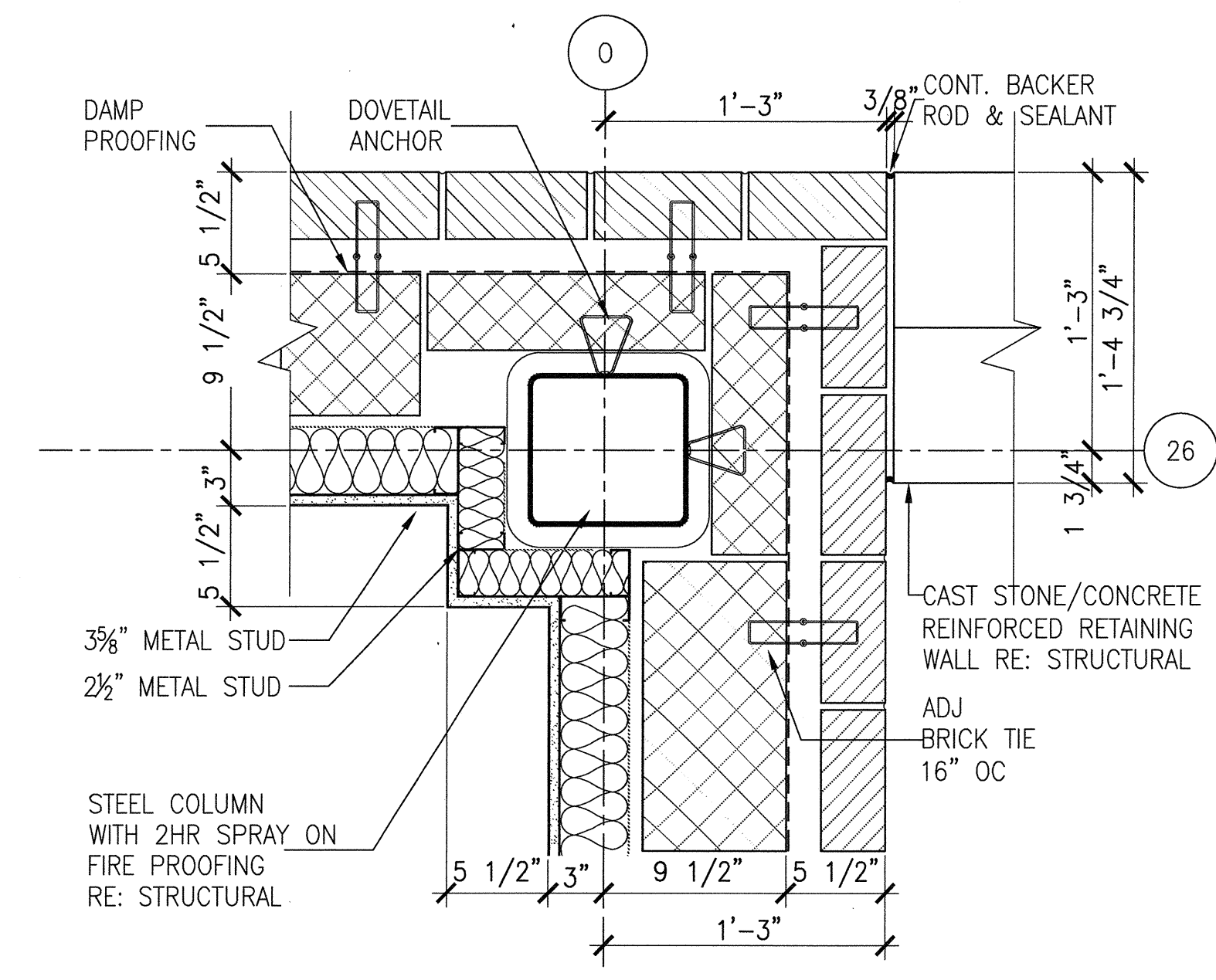
11 **TYP DETAIL AT WINDOW**  
SCALE: 1-1/2"=1'-0"

### III DETAIL



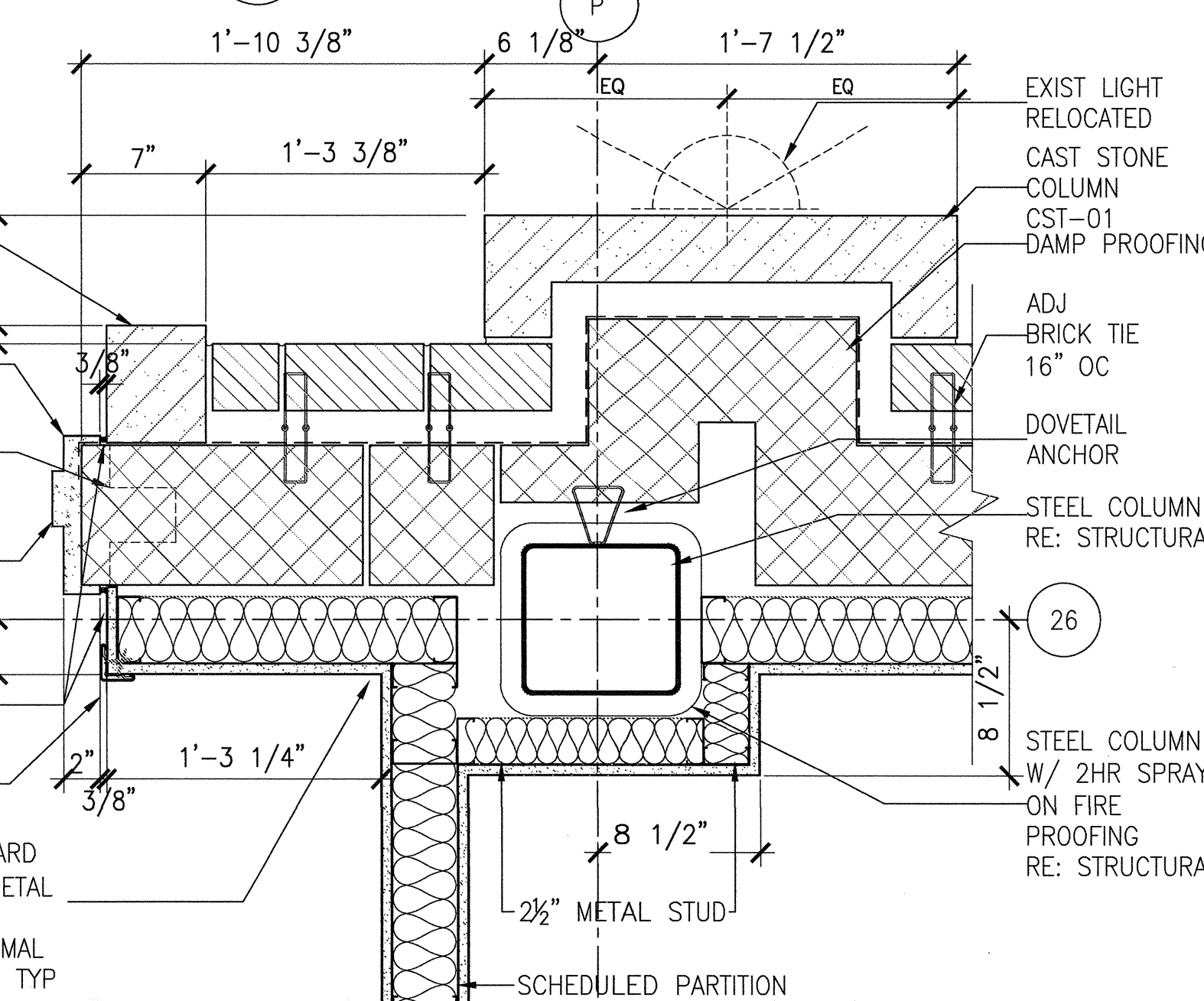
11 **TYP DETAIL AT WINDOW**  
SCALE: 1-1/2"=1'-0"

### III DETAIL



02 DETAIL AT RETAINING WALL

SCALE: 1-1/2"=1'



01 DETAIL AT BASEMENT (EAST)  
SCALE: 1/4" = 1'-0"

1) **DETAIL A**


CONSULTANTS:

DO NOT SCALE THESE DRAWINGS. Q.C. TO FIELD VERIFY DIMENSIONS

Project Title			
BUILDING 11 ADDITION & INTERIOR RENOVATIONS			
Location			
WACO, TEXAS			
Date		Checked	Drawn
19 DEC 2011			

**FULLY SPRINKLERE**

**Office of  
Construction  
and Facilities  
Management**

 **Department of  
Veterans Affairs**