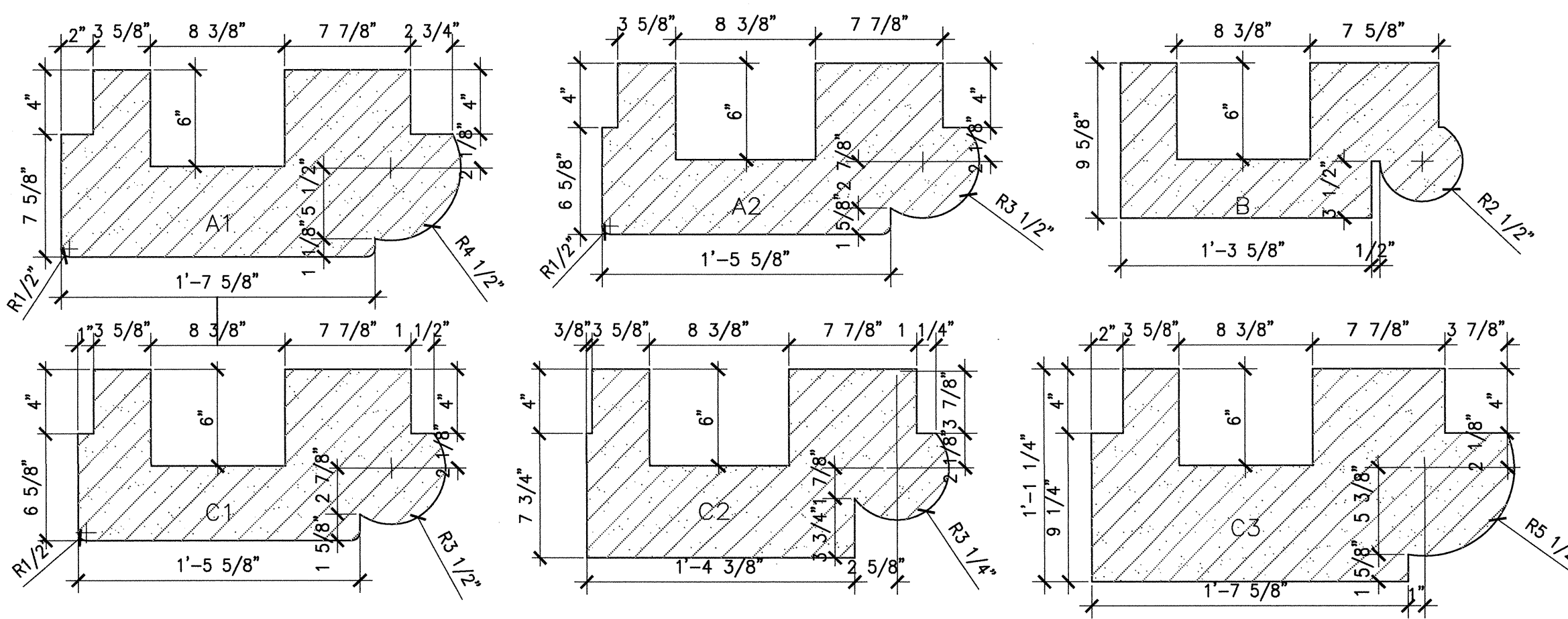
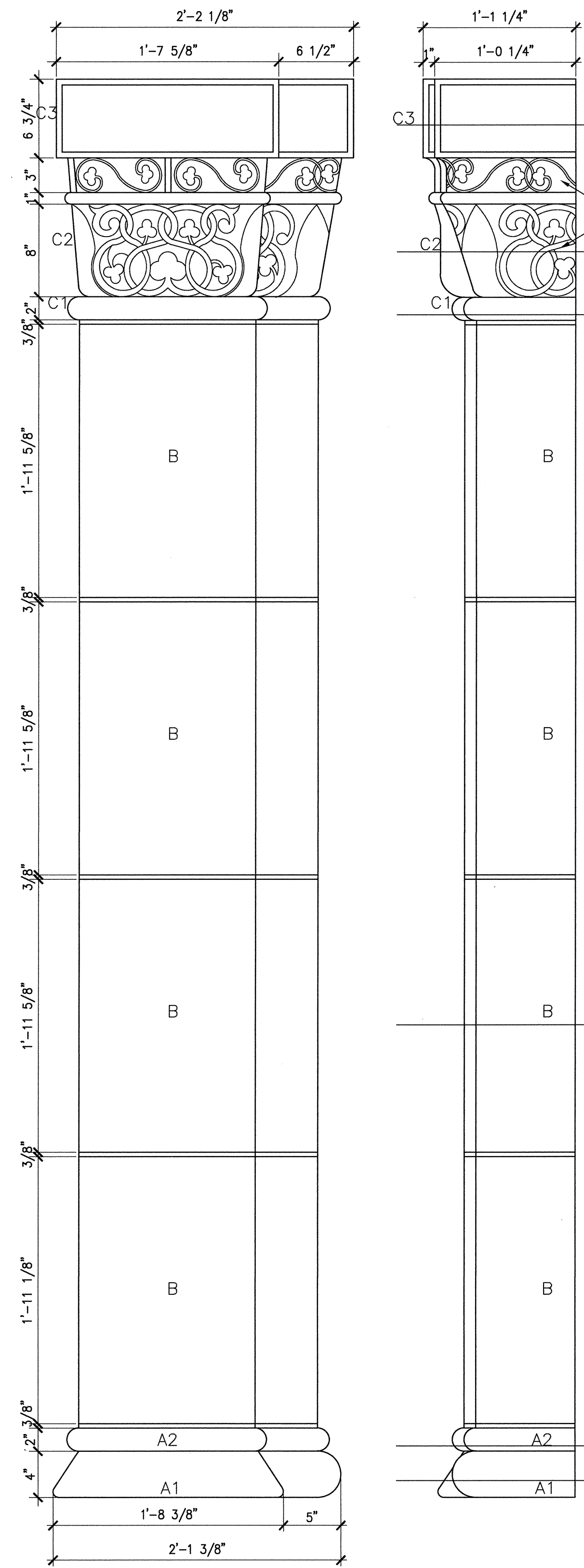


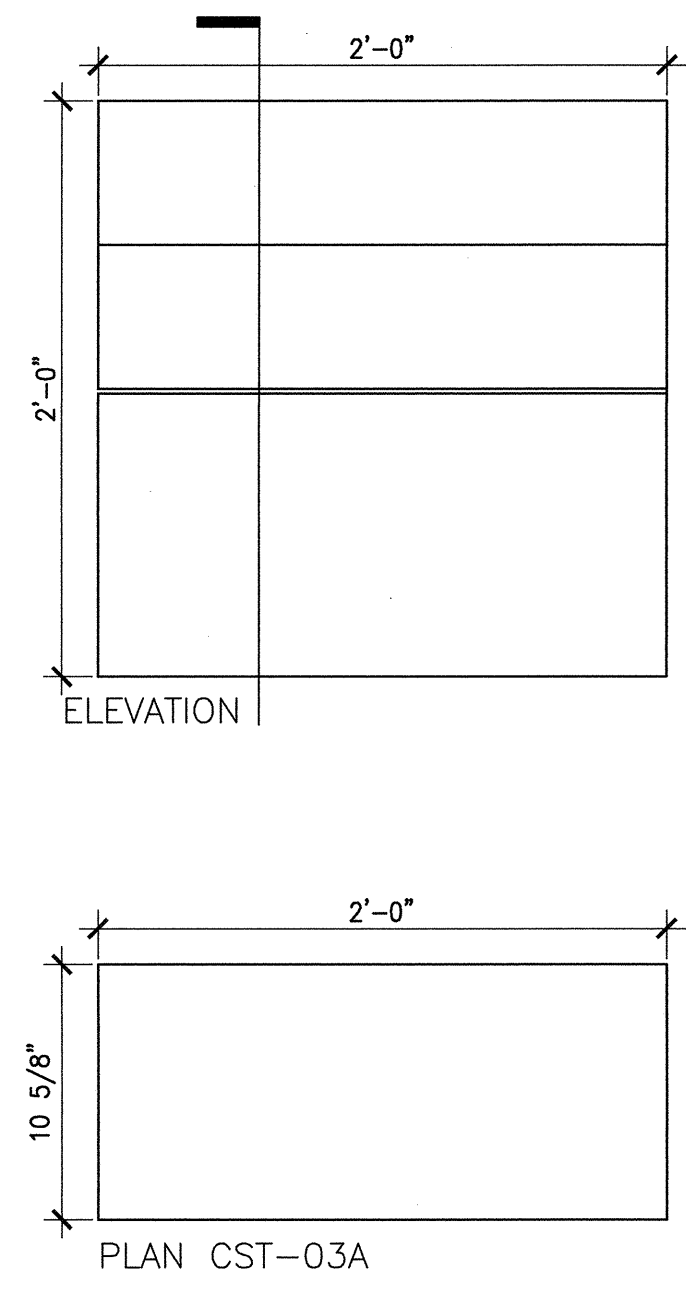
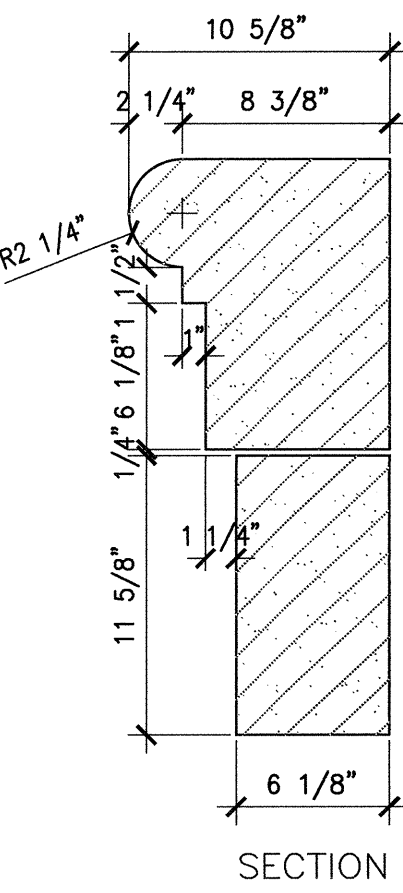
three inches = one foot  
one and one half inches = one foot  
one inch = one foot  
three quarters inch = one foot  
one half inch = one foot  
three eighths inch = one foot  
one quarter inch = one foot  
one eighth inch = one foot



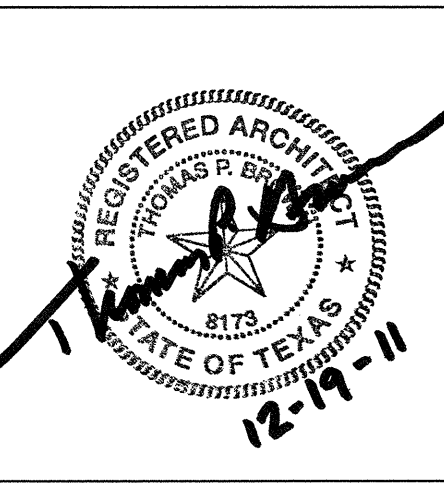
26 CST-04  
SCALE: 1-1/2"=1'-0"

SCHEMATIC DESIGN SUBMISSION	08/02/10
DESIGN DEVELOPMENT SUBMISSION	08/03/10
CONSTRUCTION DOCUMENT SUBMISSION	11/22/10
ISSUED FOR BIDS	12/19/11
Revisions:	Date

CONSULTANTS:	



16 CST-03A AND CST-03B  
SCALE: 1-1/2"=1'-0"

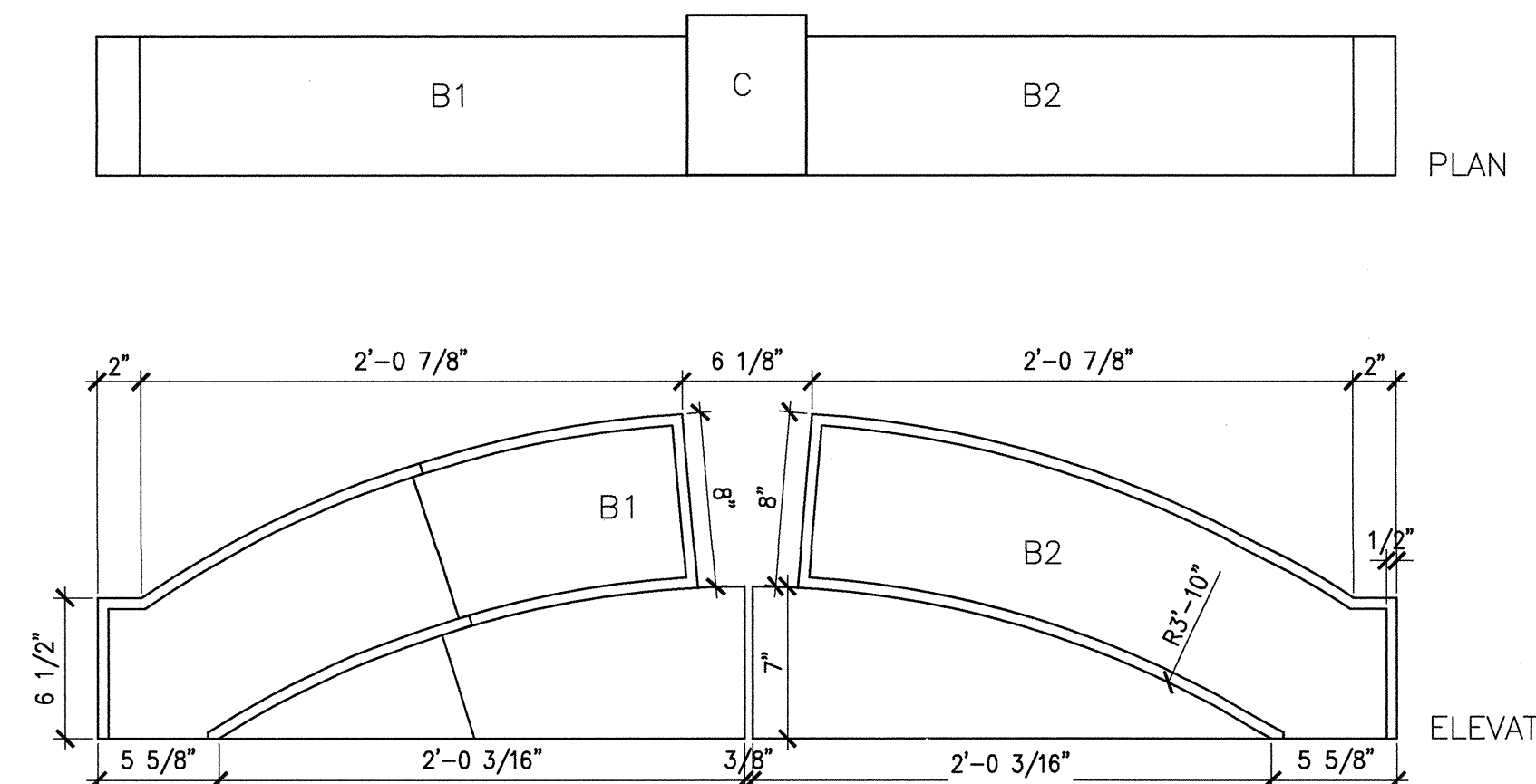
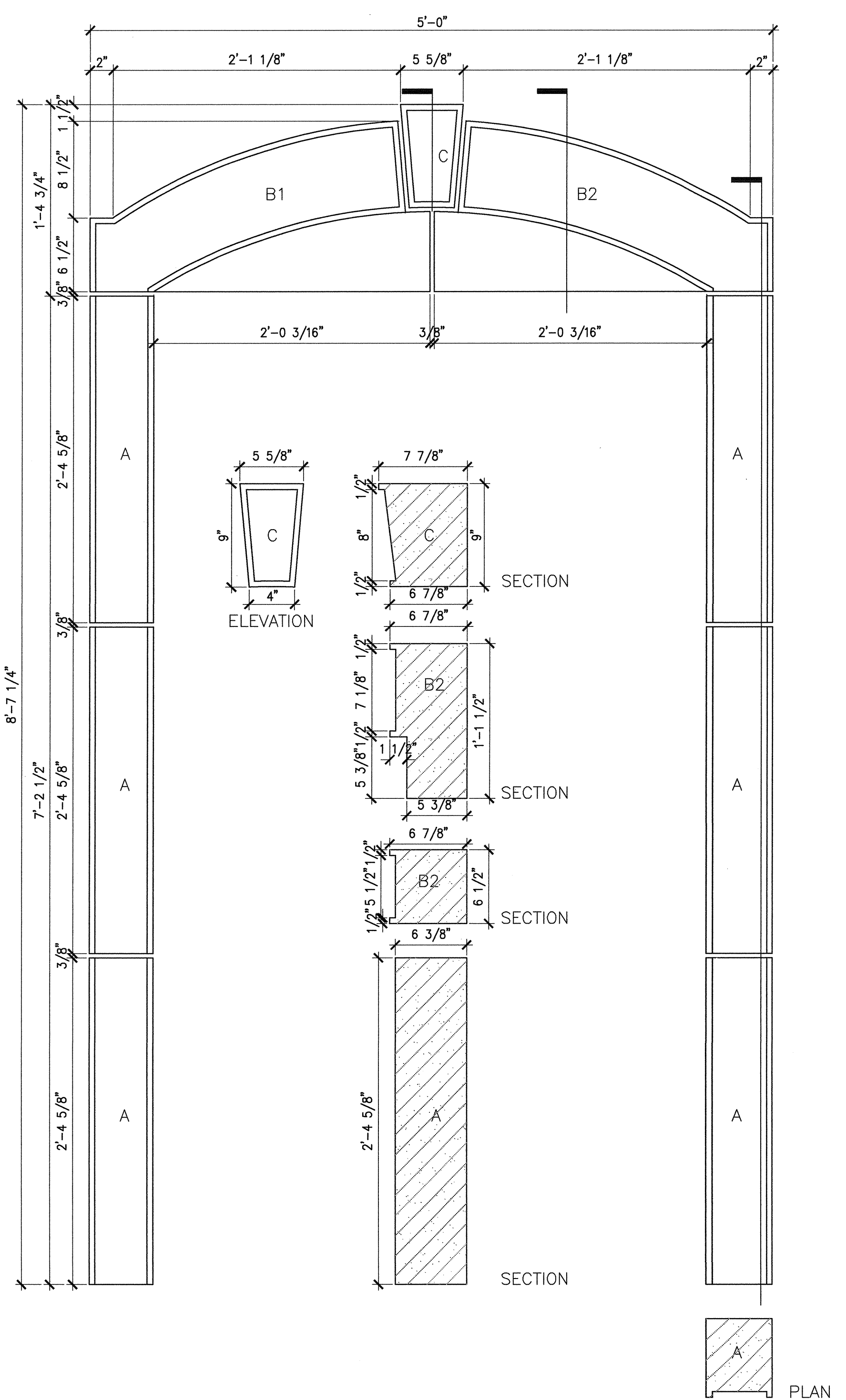


**ARCHITECT/ENGINEERS:**  
**WILSON ARCHITECTURAL GROUP**  
505 WESTMEIER, SUITE 200 HOUSTON, TEXAS 77050 TELEPHONE 713 625-6714

MEP ENGINEERS  
STRUCTURAL ENGINEERS  
FIRE PROTECTION ENGINEERS  
CIVIL ENGINEERS

BURNS DeLATTIE AND MCCOY, INC.  
PINNACLE STRUCTURAL  
PROTECTION DEVELOPMENT INC.  
BREWER AND ESCALANTE

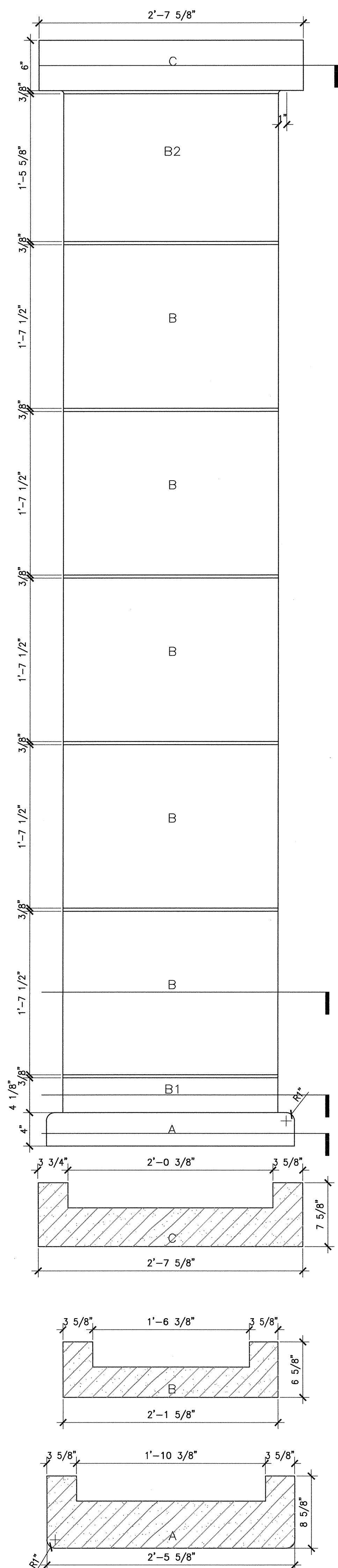
1. CAST STONE TO MATCH EXISTING. VERIFY ALL SHAPES AND DIMENSIONS
2. REFER TO SHEET 11-AS-3.00 FOR INFORMATION REGARDING TO EXTERIOR BUILDING ELEVATIONS
3. REFER TO SHEET 11-AS-3.01 FOR PHOTOS OF EXISTING FACADE
- 15 GENERAL NOTES**  
SCALE: N.T.S.



11 CST-02  
SCALE: 1-1/2"=1'-0"

DO NOT SCALE THESE DRAWINGS. G.C. TO FIELD VERIFY DIMENSIONS
Drawing Title
CAST STONE TYPES & PROFILES
Approved Project Director

Project Title	BUILDING 11 ADDITION & INTERIOR RENOVATIONS
Location	WACO, TEXAS
Date	19 DEC 2011
Checked	
Drawn	
Project Number	674A4-CSI-516
Building Number	11
Drawing Number	11-AS-5.05
Dwg. of	



01 CST-01  
SCALE: 1-1/2"=1'-0"

Office of Construction and Facilities Management

Department of Veterans Affairs