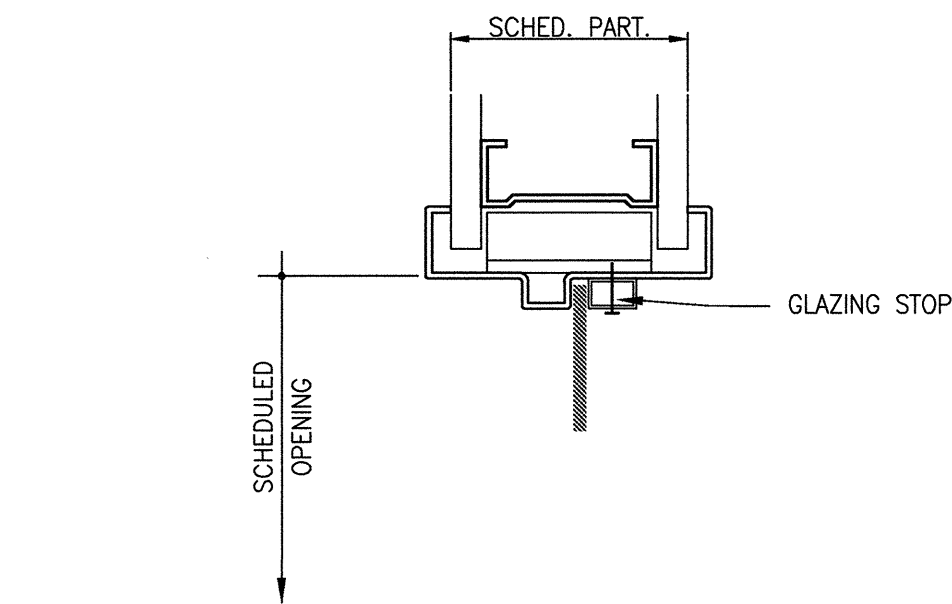
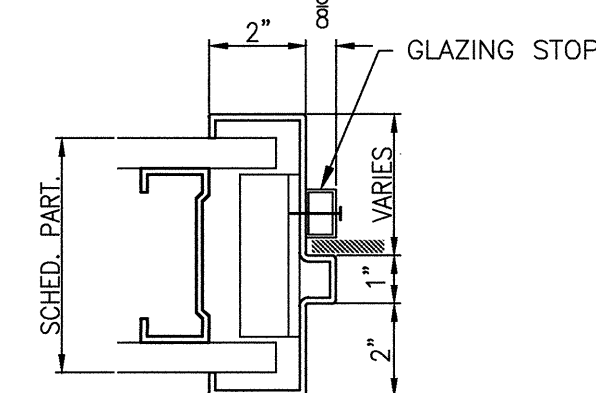


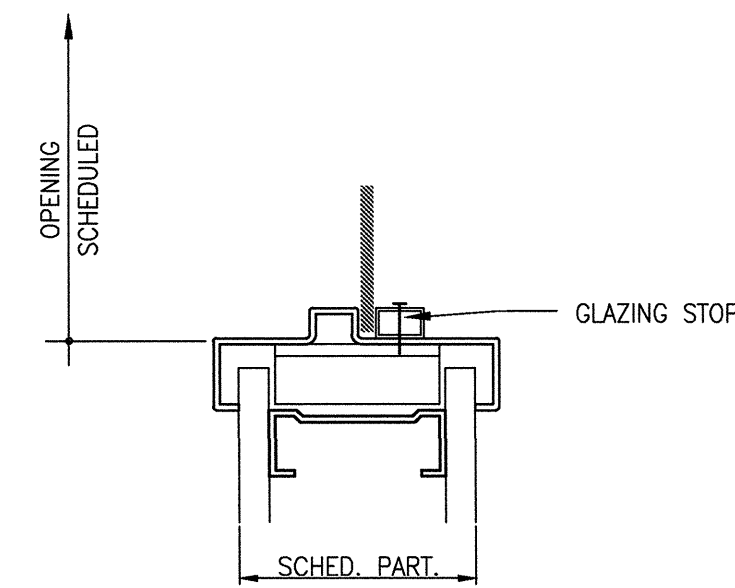
three inches = one foot  
one and one half inches = one foot  
one inch = one foot  
three quarters inch = one foot  
one half inch = one foot  
three eighths inch = one foot  
one quarter inch = one foot  
one eighth inch = one foot  
one sixteenth inch = one foot



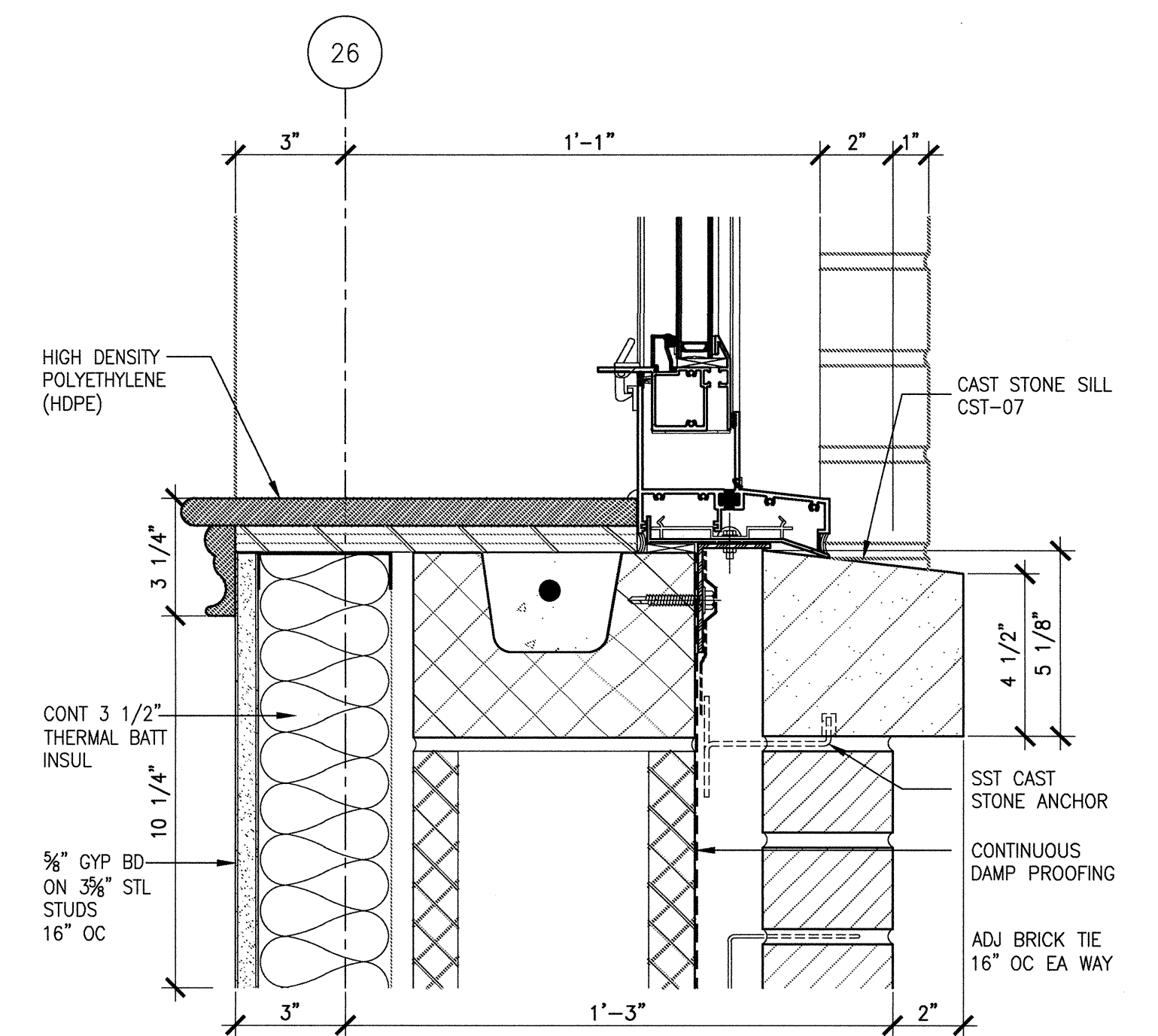
13 HEAD at INT WDW FRAME TYPE 1  
3'-1'-0"



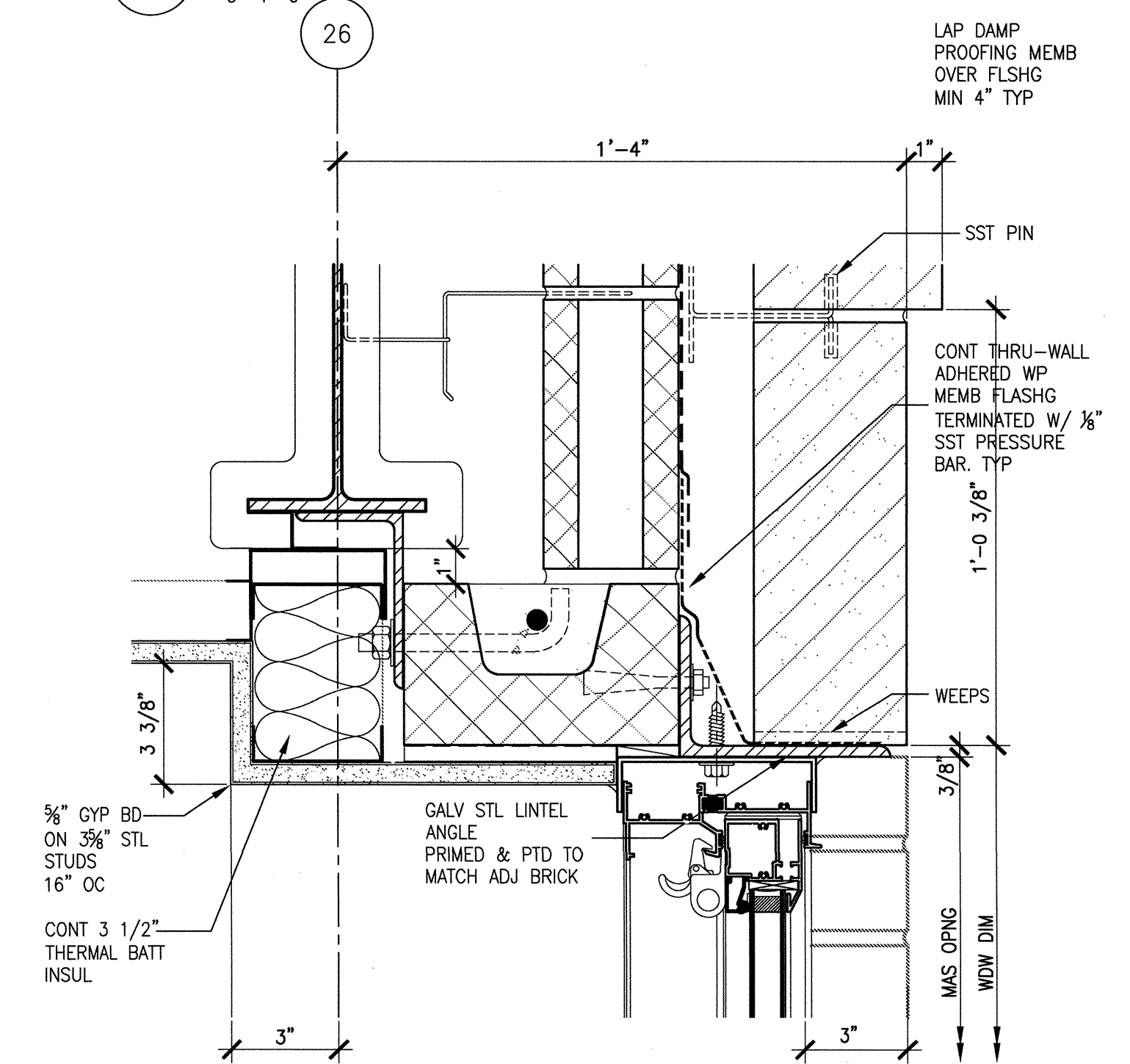
12 JAMB at WDW FRAME TYPE 1  
3'-1'-0"



11 SILL at WDW FRAME TYPE 1  
3'-1'-0"



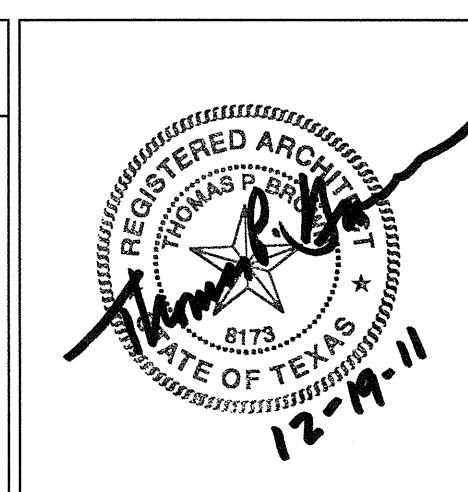
02 EXTERIOR WDW SILL DETAIL  
3'-1'-0"



01 EXTERIOR WDW HEAD DETAIL  
3'-1'-0"

SCHEMATIC DESIGN SUBMISSION	08/02/10
DESIGN DEVELOPMENT SUBMISSION	09/03/10
CONSTRUCTION DOCUMENT SUBMISSION	11/22/10
ISSUED FOR BIDS	12/19/11
Revisions:	Date

CONSULTANTS:	
--------------	--



ARCHITECT/ENGINEERS:	
WILSON ARCHITECTURAL GROUP	
MEP ENGINEERS	BURNS DeLATTE AND McCOY, INC.
STRUCTURAL ENGINEERS	PINNACLE STRUCTURAL
FIRE PROTECTION ENGINEERS	PROTECTION DEVELOPMENT INC.
CIVIL ENGINEERS	BREWER AND ESCALANTE

DO NOT SCALE THESE DRAWINGS. G.C. TO FIELD VERIFY DIMENSIONS
Drawing Title
WINDOW DETAILS
Approved Project Director

Project Title
BUILDING 11 ADDITION & INTERIOR RENOVATIONS
Location
WACO, TEXAS
Date
19 DEC 2011
Checked
Drawn

ISSUED FOR BIDS
Project Number
674A4-CSI-516
Building Number
11
Drawing Number
11-AS-5.21
Dwg. of

FULLY SPRINKLERED
Office of Construction and Facilities Management
Department of Veterans Affairs