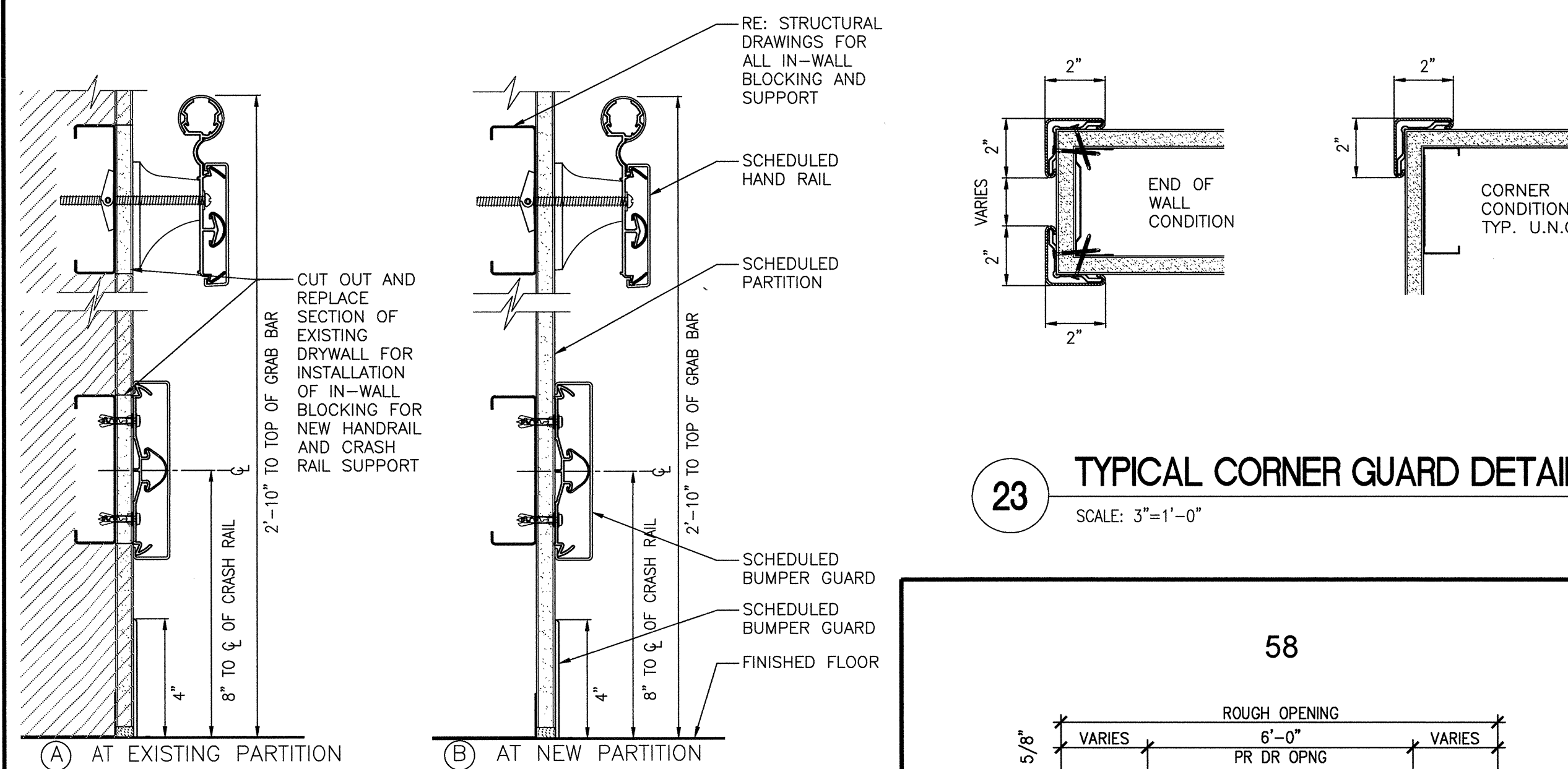
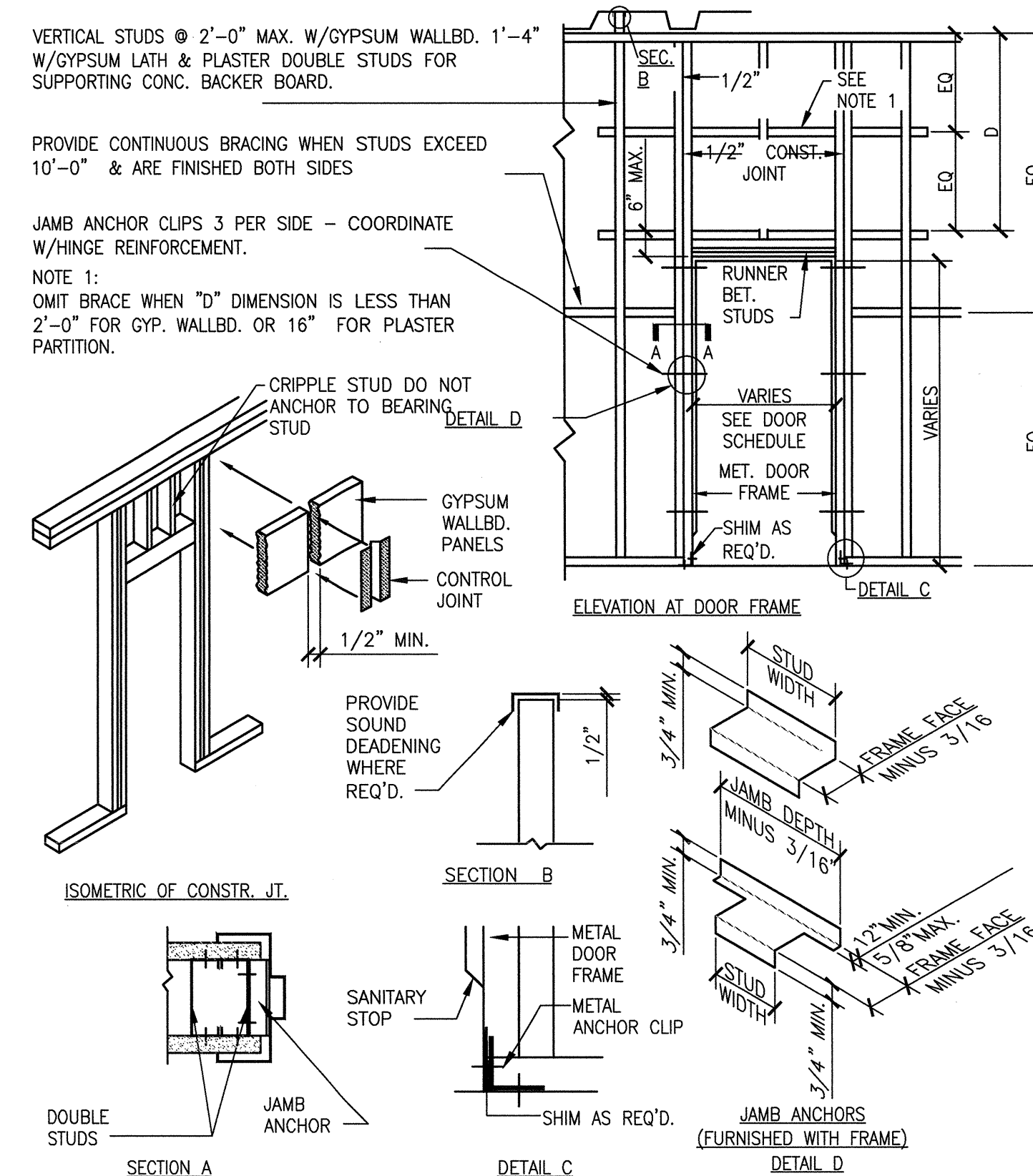


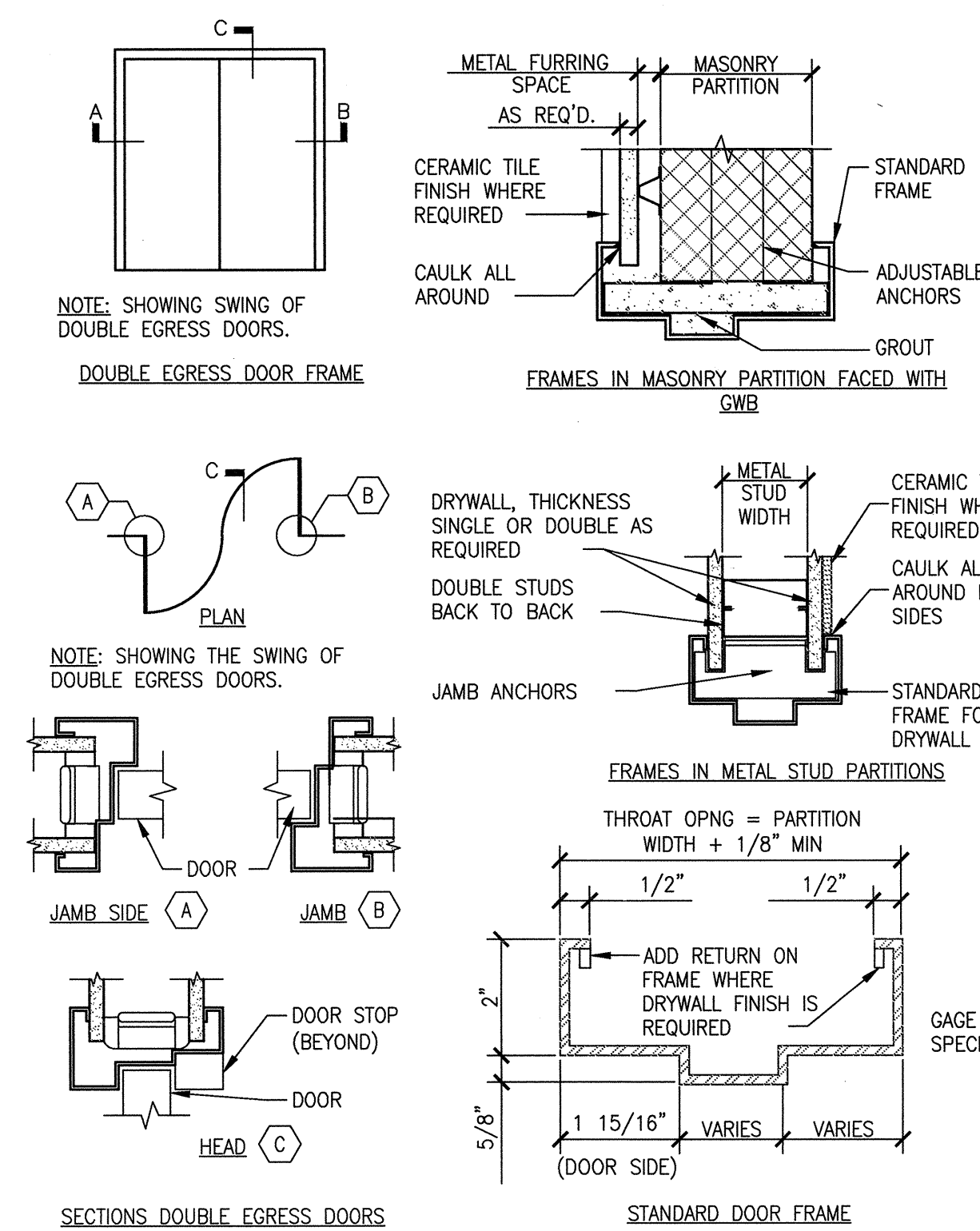
29 RESILIENT HANDRAILS: TYPICAL DIMENSIONS
N.T.S.



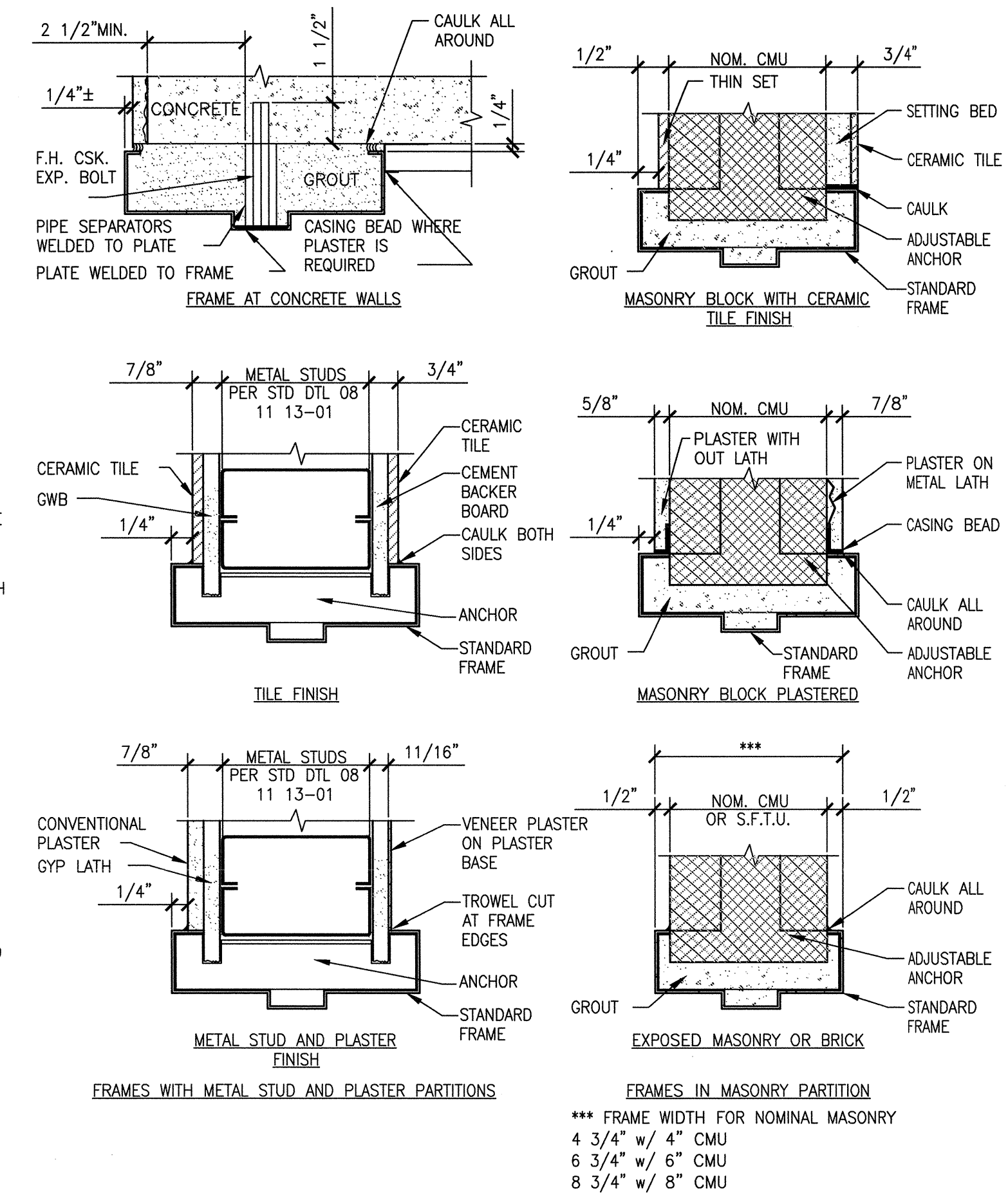
23 TYPICAL CORNER GUARD DETAILS
SCALE: 3"=1'-0"



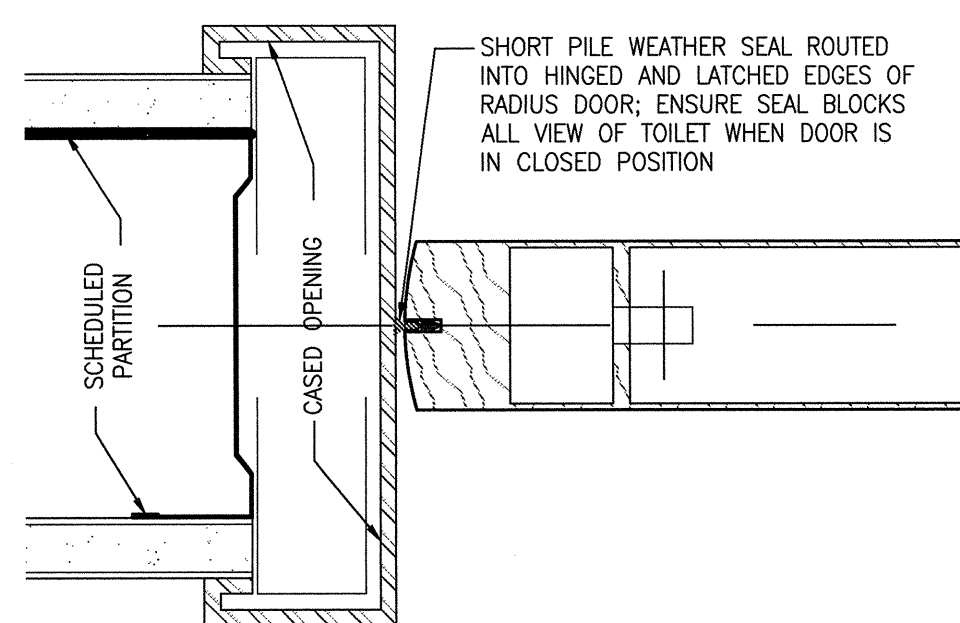
18 PARTITION FRAMING FOR DOORS
N.T.S.



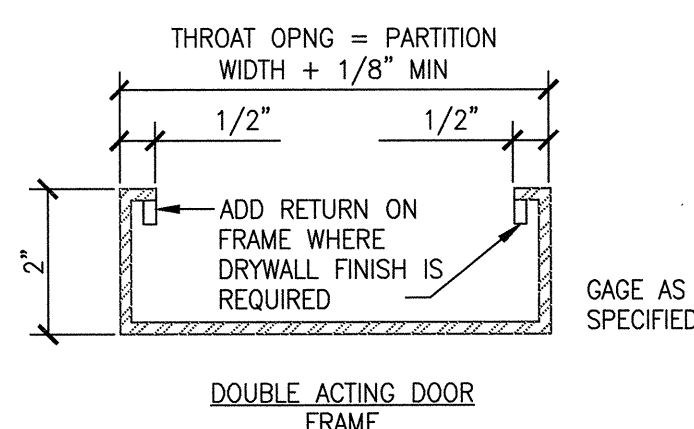
13 INTERIOR DOOR FRAMES - TYPE 1
N.T.S.



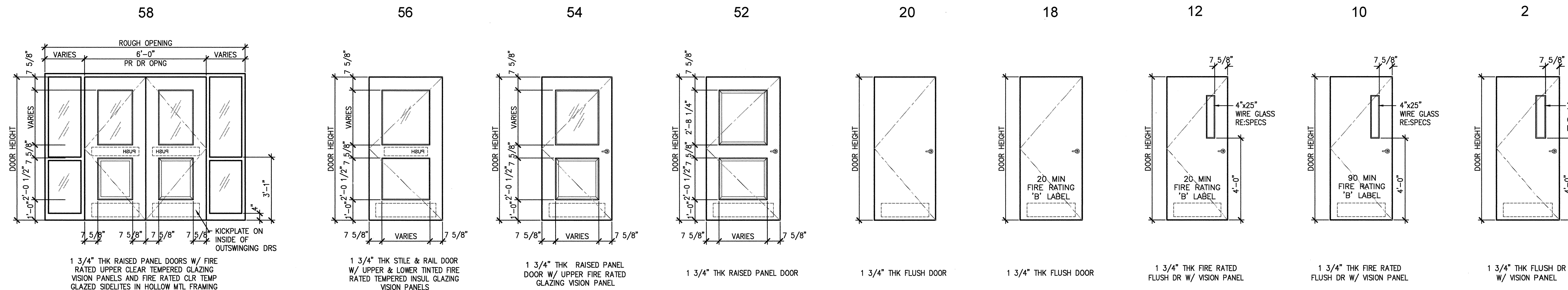
28 HAND RAIL AND CRASH RAIL DETAIL
SCALE: 3"=1'-0"



27 PRIVACY GUARD AT RADIUS DOOR
SCALE: 6"=1'-0"



26 INTERIOR DOOR FRAME - TYPE 2
N.T.S.



NOTES:

- PROVIDE ACROVYN FRAME GUARDS IN SCHEDULED STYLE AND COLOR, FOR ALL DOORS; REFER TO THE SPECIFICATIONS
- ALL RATED DOORS SHALL RECEIVE SMOKE SEALS; ALL OTHER DOORS WILL GET DOOR MUTES OR SILENCERS AS STATED IN SPECIFICATIONS
- ALL INTERIOR WOOD DOORS MARKED WITH THE MODIFICATION 'AVY' SHALL BE 1 3/4" THICK SOLID WOOD CORE ACROVYN DOORS, FULLY CLAD WITH 0.040" THICK ACROVYN AND CONTINUOUS ACROVYN DOOR EDGES.

16 DOOR SCHEDULE
N.T.S.

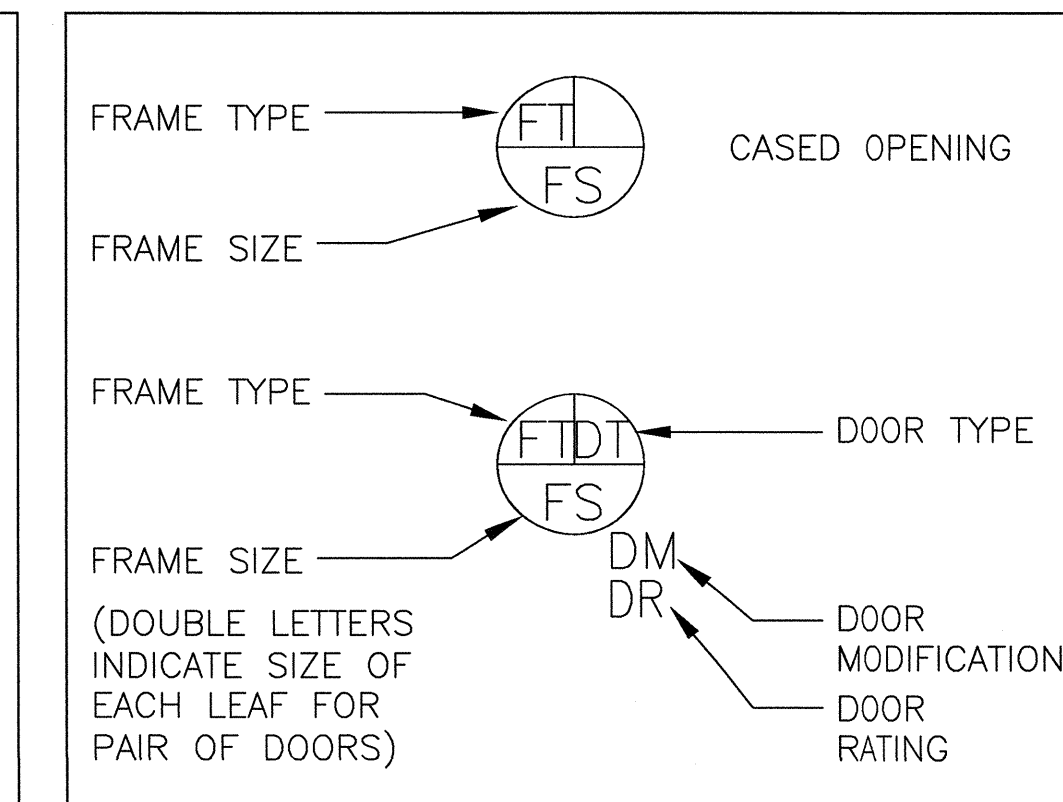
DOOR SIZE

| MARK | WIDTH | HEIGHT | MARK | WIDTH | HEIGHT |
|------|--------|--------|------|--------|--------|
| A | 1'-6" | 6'-8" | N | 2'-0" | 7'-0" |
| B | 2'-0" | 6'-8" | O | 2'-2" | 7'-0" |
| C | 2'-2" | 6'-8" | P | 2'-4" | 7'-0" |
| D | 2'-4" | 6'-8" | Q | 2'-6" | 7'-0" |
| E | 2'-6" | 6'-8" | R | 2'-8" | 7'-0" |
| F | 2'-8" | 6'-8" | S | 3'-0" | 7'-0" |
| G | 2'-10" | 6'-8" | T | 3'-4" | 7'-0" |
| H | 3'-0" | 6'-8" | U | 3'-6" | 7'-0" |
| I | 3'-2" | 6'-8" | V | 3'-8" | 7'-0" |
| J | 3'-4" | 6'-8" | W | 3'-10" | 7'-0" |
| K | 3'-8" | 6'-8" | X | 4'-0" | 7'-0" |
| L | 3'-10" | 6'-8" | Y | 4'-2" | 8'-0" |
| M | 1'-6" | 7'-8" | Z | 1'-0" | 7'-0" |

DOOR MODIFICATION

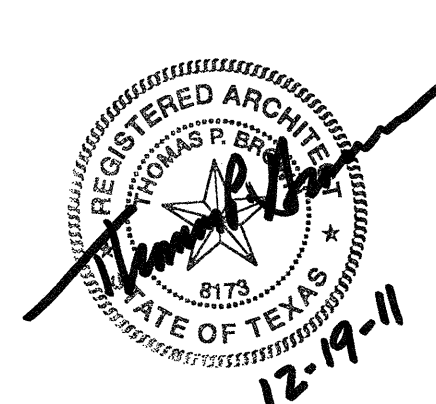
| | |
|-----|--|
| A | LAMINATED GLASS, TYPE C4 5/8" |
| ADO | AUTOMATIC DOOR OPERATOR |
| D | DOUBLE GLAZED TEMPERED GLASS, TYPE C1 |
| E | EXISTING FRAME TO REMAIN |
| F | FIRE RATED GLAZING |
| H | ELECTRIC HOLD OPEN |
| L | LOUVERED |
| LP | LIGHTPROOF LOUVER |
| M | MECHANICAL SEAL FOR LIGHTPROOF & SOUND RETARDING DOORS (RE: 9/A-602) |
| PH | PIVOT HINGE |
| S | SOUND RTD DR W/SOUND SEAL ASSEMBLY & THRESHOLD |
| T | TEMPERED GLASS, C1 |
| U | UNDERCUT 1" (3/4" @ RATED DOORS) |
| V | WIRE GLASS, TYPE G |
| WD | WOOD VENEER |
| X | DOOR FRAME PROTECTION |

DOOR LABEL



| | |
|----------------------------------|----------|
| SCHEMATIC DESIGN SUBMISSION | 08/02/10 |
| DESIGN DEVELOPMENT SUBMISSION | 09/03/10 |
| CONSTRUCTION DOCUMENT SUBMISSION | 11/22/10 |
| ISSUED FOR BIDS | 12/19/11 |
| Revisions | Date |

CONSULTANTS:



ARCHITECT/ENGINEERS:

WILSON ARCHITECTURAL GROUP
600 WESTHEIMER, SUITE 200 HOUSTON, TEXAS 77058 TELEPHONE (713) 821-6704

MEP ENGINEERS
STRUCTURAL ENGINEERS
FIRE PROTECTION ENGINEERS
CIVIL ENGINEERS

BURNS DeLATTIE AND McCOY, INC.
PINNACLE STRUCTURAL
PROTECTION DEVELOPMENT INC.
BREWER AND ESCALANTE

DO NOT SCALE THESE DRAWINGS. G.C. TO FIELD VERIFY DIMENSIONS

DOOR SCHEDULE & DETAILS

Approved Project Director

Project Title
BUILDING 11 ADDITION & INTERIOR RENOVATIONS

Location
WACO, TEXAS

Date
19 DEC 2011

Checked

Drawn

ISSUED FOR BIDS

Project Number
674A4-CSI-516

Building Number
11

Drawing Number
11-AS-6.01

Dwg. of

FULLY SPRINKLERED

Office of
Construction
and Facilities
Management

