

BUILDING 11 - MINOR ADDITION
DEPARTMENT OF VETERAN AFFAIRS
WACO, TEXAS
FIRE PROTECTION GENERAL
PDI PROJECT #09-105

AUTOMATIC SPRINKLER SYSTEM

AUTOMATIC SPRINKLER SYSTEM GENERAL NOTES

- SCOPE OF WORK INCLUDES THE NEW ADDITION AND RENOVATED AREAS ONLY.
- VERIFY ALL EXISTING CONDITIONS PRIOR TO DESIGN AND INSTALLATION.
- ALL NEW SPRINKLER HEADS SHALL BE FM APPROVED, ORDINARY TEMPERATURE, QUICK RESPONSE. HEADS SHALL BE INSTITUTIONAL TYPE OR CONCEALED TYPE.
- UPRIGHT FM APPROVED SPRINKLER HEADS SHALL BE USED IN AREAS WITH EXPOSED CONSTRUCTION. THESE SPRINKLER HEADS SHALL BE QUICK RESPONSE TYPE.
- SPRINKLER HEAD INSTALLATION SHALL BE CENTER OF TILE. FINISH OUT SPRINKLER DESIGN SHALL COMPLY WITH NFPA 13, 2010 EDITION AND SPECIFICATION SECTION 21.13.13.
- HYDRAULIC CALCULATION METHOD SHALL BE DENSITY/AREA PER NFPA 13. HYDRAULIC CALCULATIONS SHALL INCLUDE FRICTION LOSS THROUGH ALL NEW AND EXISTING PIPE AND FITTINGS TO THE EXISTING UNDERGROUND WATER MAIN FLOW TESTED BY THE FPE.
- SEISMIC BRACING IS NOT REQUIRED.
- INSTALLATION OF SPRINKLER HEAD MODIFICATION INVOLVING FEWER THAN 20 SPRINKLER HEADS ARE PERMITTED TO BE HYDROSTATICALLY TESTED AT NORMAL SYSTEM STATIC PRESSURE ONLY.

FIRE ALARM SYMBOLS

SYMBOL	DESCRIPTION	SYMBOL	DESCRIPTION
	SMOKE DETECTOR		STROBE UNIT X=75 UNLESS NOTED OTHERWISE
	MANUAL PULL STATION		CHIME UNIT
	DUCT SMOKE DETECTOR		CHIME/STROBE UNIT X=75 UNLESS NOTED OTHERWISE
	DUCT SMOKE DETECTOR REMOTE LED AND TEST SWITCH		

FIRE ALARM ABBREVIATIONS

NOT IN CONTRACT

E - EXISTING DEVICE

W - WALL MOUNTED DEVICE

FIRE ALARM SYSTEM GENERAL NOTES

- SCOPE OF WORK INCLUDES THE NEW ADDITION AND RENOVATED AREAS ONLY.
- NEW EQUIPMENT SHALL BE PROVIDED BY SIMPLEXGRINNELL. NO SUBSTITUTIONS ARE PERMITTED.
- VERIFY ALL EXISTING CONDITIONS PRIOR TO DESIGN AND INSTALLATION.
- FIRE ALARM SYSTEM INSTALLATION SHALL BE IN COMPLETE CONFORMANCE WITH NFPA 72, 2010 EDITION AND SPECIFICATION SECTION 28.31.00.
- CONTRACTOR SHALL VERIFY ALL EXISTING CONDITIONS AND DIMENSIONS PRIOR TO CONSTRUCTION. ANY DISCREPANCIES SHALL BE REPORTED TO THE ARCHITECT.
- CONTRACTOR MUST COORDINATE SYSTEM INSTALLATION WITH THE CONSTRUCTION PHASING OF THIS PROJECT.
- ALL NOTIFICATION APPLIANCES SHALL BE CEILING MOUNTED UNLESS NOTED OTHERWISE.

FIRE ALARM SYSTEM I/O MATRIX

Input: Initiation	System Outputs											
	System Status			Existing Fire Alarm Control Unit								
	Signal Type			Visible Indicator			Audible Indicator			Building Notification		
	Fire Alarm	Supervisory	Trouble	Fire Alarm	Supervisory	Trouble	Fire Alarm	Supervisory	Trouble	Visible Indicator	Audible Indicator	Life Safety Controls
Duct Smoke Detector		•			•			•				•
Elevator Lobby Smoke Detector Primary Floor	•			•			•					•
Elevator Lobby Smoke Detector Alternative Floor	•			•			•					•
Manual Pull Station	•			•			•					•
Existing Tamper Switch		•			•			•				
Existing Water Flow Switch	•			•			•					
Fire Alarm ac Power Failure		•			•			•				
Fire Alarm System Low Battery Power		•			•			•				
Fire Alarm System Open Circuit			•			•			•			
Fire Alarm System Ground Fault			•			•			•			

Protection Development

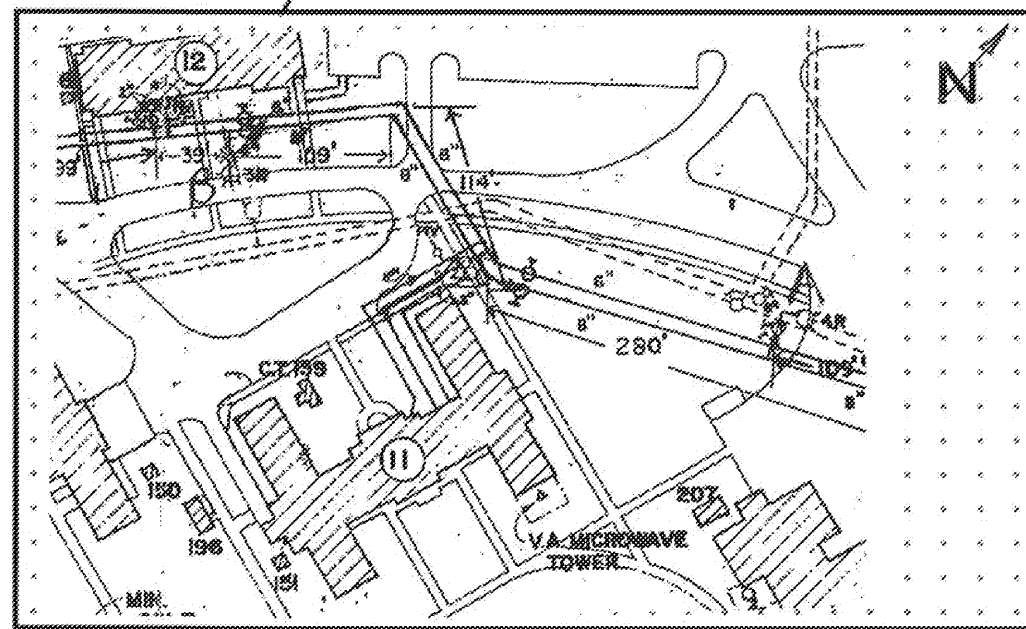
8620 N. New Braunfels Avenue, Suite 100
San Antonio, Texas 78217
210.828.7533 voice
210.828.7534 fax
www.PDIffs.com

CITY: WACO, TEXAS DATE: 7/19/2010 TIME: 10:00 am
PDI PROJECT #: 09-105 FERGUSON'S MAPSCO #:

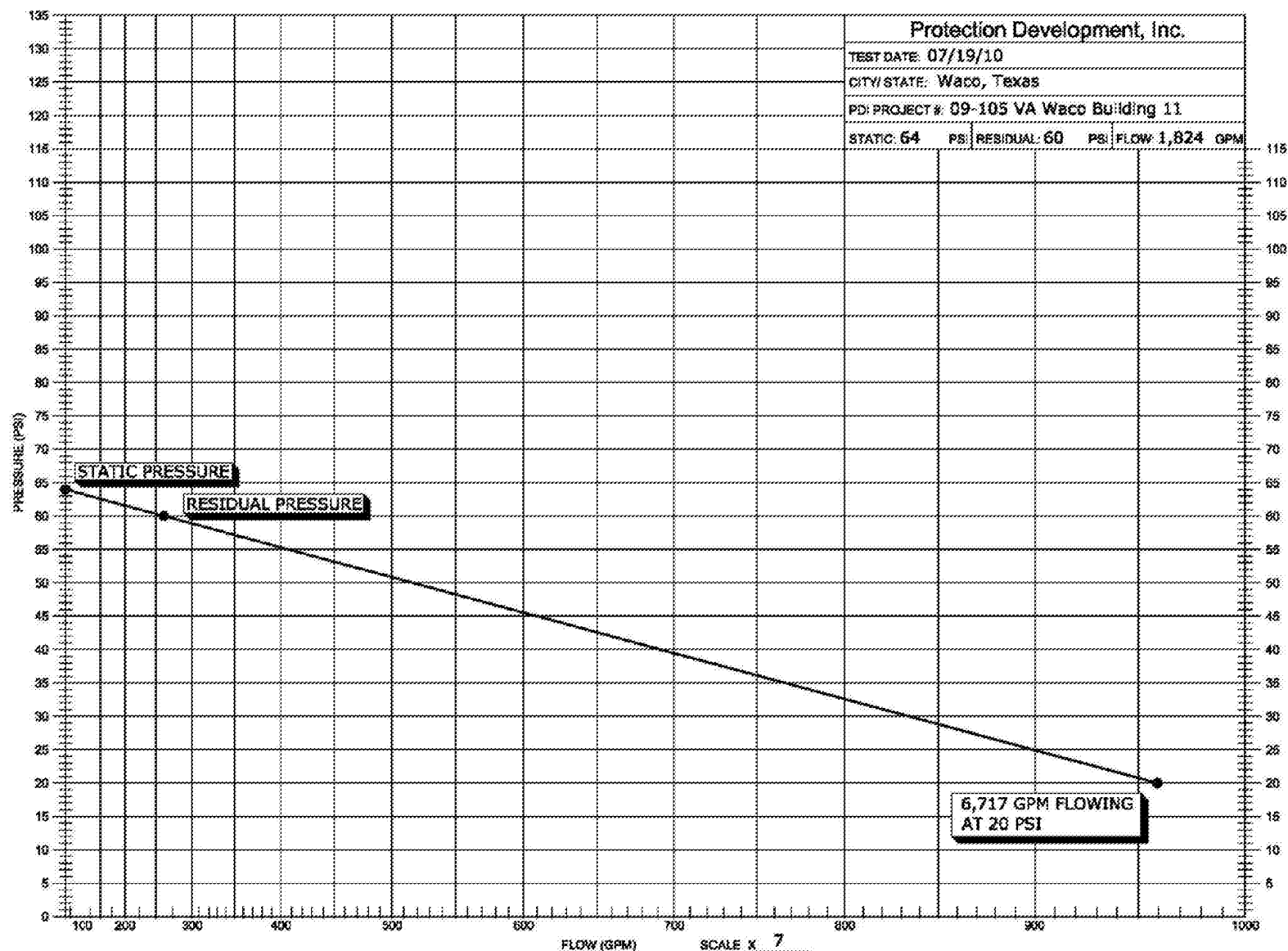
Flow Hydrant(s)	A	Pressure Hydrant(s)	B	Water Main	<input type="checkbox"/> Public <input type="checkbox"/> Dead-End
Static (PSI)	—	Static (PSI)	64	<input checked="" type="checkbox"/> Private <input checked="" type="checkbox"/> Circulating	
Flow (GPM)	1824	Residual (PSI)	60	Size (")	
Flow at 20 PSI:	6717 GPM	Material			

Comments:

Witnessed by (print): Temple K. Kenna of PDI
Signature: _____
Conducted by (print): G. R. Ziemba of Protection Development, Inc.
Signature: _____



Date Entered into F.T.D.:



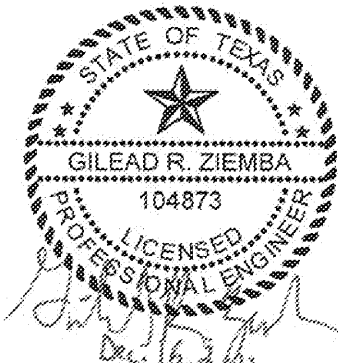
FLOW TEST DATA

SCHEMATIC DESIGN SUBMISSION	08/02/10
DESIGN DEVELOPMENT SUBMISSION	09/03/10
CONSTRUCTION DOCUMENT SUBMISSION	11/22/10
ISSUED FOR BIDS	12/19/11
Revisions	Date

CONSULTANTS:



8620 N. New Braunfels Ave., Suite 100
San Antonio, Texas 78217
Phone: 210.828.7533 Fax: 210.828.7534
E-Mail: mail@pdi.com
Texas Registered Engineering Firm F-2816



ARCHITECT/ENGINEERS:

WILSON ARCHITECTURAL GROUP
5051 WESTHEIMER, SUITE 200 HOUSTON, TEXAS 77056 TELEPHONE (713) 621-6704

MEP ENGINEERS
STRUCTURAL ENGINEERS
FIRE PROTECTION ENGINEERS
CIVIL ENGINEERS

BURNS DeLATTE and McCoy, INC.
PINNACLE STRUCTURAL
PROTECTION DEVELOPMENT INC.
BREWER AND ESCALANTE

DO NOT SCALE THESE DRAWINGS. G.C. TO FIELD VERIFY DIMENSIONS

Drawing Title	FIRE PROTECTION GENERAL - COVER SHEET
Approved Project Director	

Project Title	BUILDING 11 ADDITION & INTERIOR RENOVATIONS
Location	WACO, TEXAS
Date	19 DEC 2011
Checked	GZ
Drawn	JC/KE

'ISSUED FOR BIDS'	Project Number
674A4-CSI-516	
Building Number	11
Drawing Number	FG-0.01
Dwg. of	

Office of Construction and Facilities Management
Department of Veterans Affairs