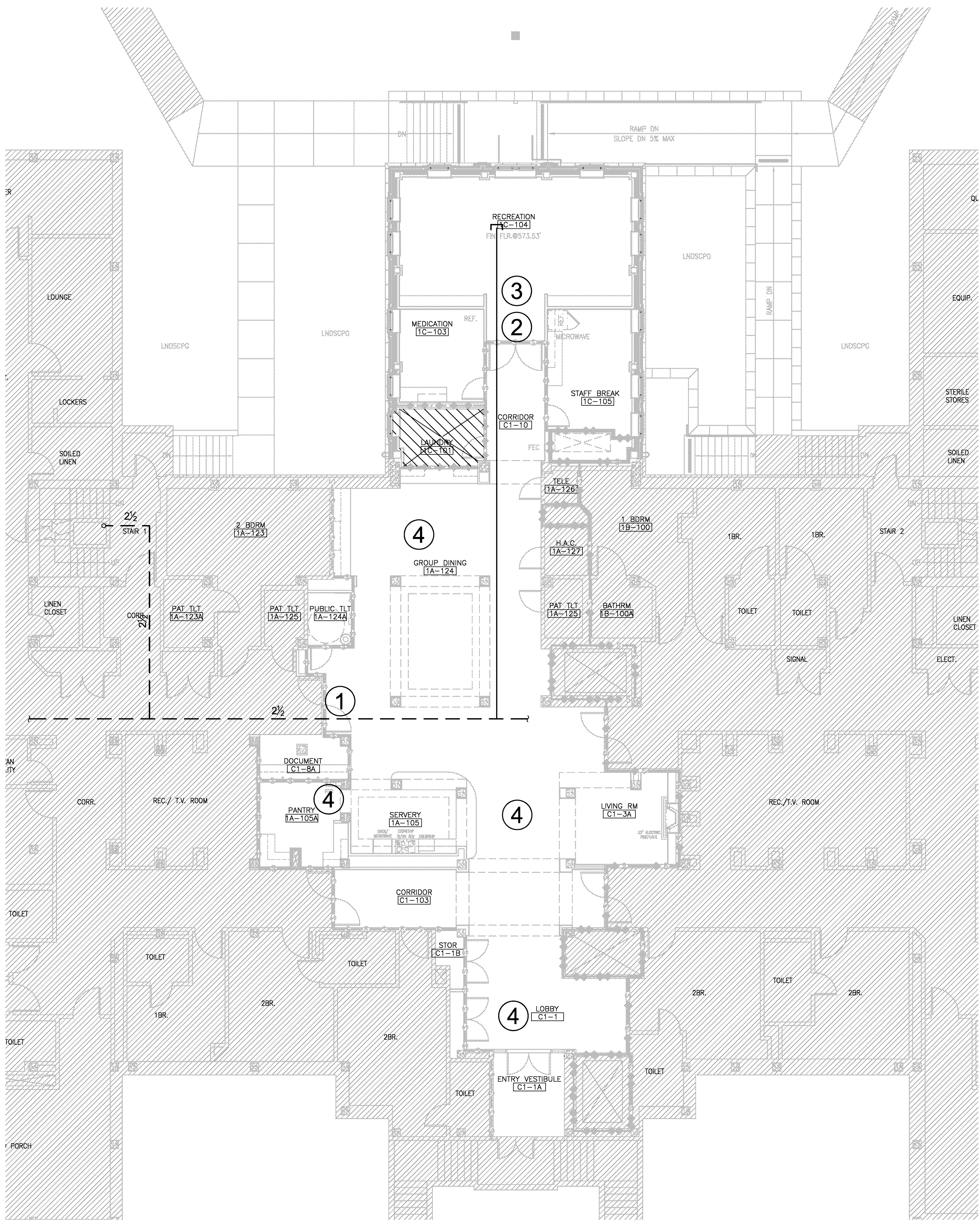


three inches = one foot  
one and one half inches = one foot  
one inch = one foot  
three quarters inch = one foot  
three eighths inch = one foot  
one eighth inch = one foot  
one quarter inch = one foot



FIRST FLOOR - AUTOMATIC SPRINKLER SYSTEM



**AUTOMATIC SPRINKLER OCCUPANCY HAZARD LEGEND**

- LIGHT HAZARD OCCUPANCY DESIGN FOR 4.1 L/min/m² (0.10 GPM/ft²) OVER 139m² (1,500 ft²) PLUS 379 L/min (100 GPM) HOSE STREAM ALLOWANCE
- ORDINARY HAZARD GROUP 1 OCCUPANCY DESIGN FOR 6.1 L/min/m² (0.15 GPM/ft²) OVER 139m² (1,500 ft²) PLUS 946 L/min (250 GPM) HOSE STREAM ALLOWANCE
- NOT IN CONTRACT

**AUTOMATIC SPRINKLER SYSTEM INSTALLATION KEY NOTES**

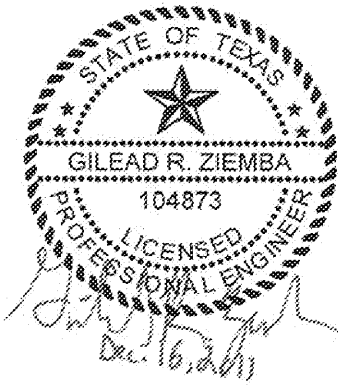
- EXISTING 2½-IN. CROSS MAIN. VERIFY EXISTING LOCATION.
- NEW CROSS MAIN TO BE SUPPLIED VIA TAP INTO EXISTING CROSS MAIN. COORDINATE LOCATION WITH ALL CONSTRUCTION DISCIPLINES PLUS NEW AND EXISTING CONDITIONS.
- NEW BRANCH LINE PIPING SHALL BE A TREE CONFIGURATION.
- REMOVE EXISTING SPRINKLER HEADS IN THIS AREA. PROVIDE ADEQUATE COVERAGE WITH NEW PIPING AND NEW SPRINKLER HEADS SUPPLIED BY EXISTING SPRINKLER HEAD OUTLETS. NEW HEADS SHALL BE LOCATED CENTER OF TILE.

SCHEMATIC DESIGN SUBMISSION	08/02/10
DESIGN DEVELOPMENT SUBMISSION	09/03/10
CONSTRUCTION DOCUMENT SUBMISSION	11/22/10
ISSUED FOR BIDS	12/19/11
Revisions	Date

**CONSULTANTS:**



8620 N. New Braunfels Ave., Suite 100  
San Antonio, Texas 78217  
Phone: 210.828.7533 Fax: 210.828.7534  
E-Mail: mailto:info@pdffire.com  
Texas Registered Engineering Firm F-2816



**ARCHITECT/ENGINEERS:**

**WILSON ARCHITECTURAL GROUP**  
505 WESTHEIMER, SUITE 200 HOUSTON, TEXAS 77056 TELEPHONE (713) 621-6704

MEP ENGINEERS  
STRUCTURAL ENGINEERS  
FIRE PROTECTION ENGINEERS  
CIVIL ENGINEERS

BURNS DeLATTE AND McCOY, INC.  
PINNACLE STRUCTURAL  
PROTECTION DEVELOPMENT INC.  
BREWER AND ESCALANTE

DO NOT SCALE THESE DRAWINGS. G.C. TO FIELD VERIFY DIMENSIONS

Drawing Title	FIRST FLOOR - AUTOMATIC SPRINKLER SYSTEM
Approved Project Director	

Project Title	BUILDING 11 ADDITION & INTERIOR RENOVATIONS
Location	WACO, TEXAS
Date	19 DEC 2011
Checked	GZ
Drawn	JC/KE

'ISSUED FOR BIDS'

Project Number	674A4-CSI-516
Building Number	11
Drawing Number	FP-1.01
Dwg. of	

FULLY SPRINKLERED

Office of  
Construction  
and Facilities  
Management

