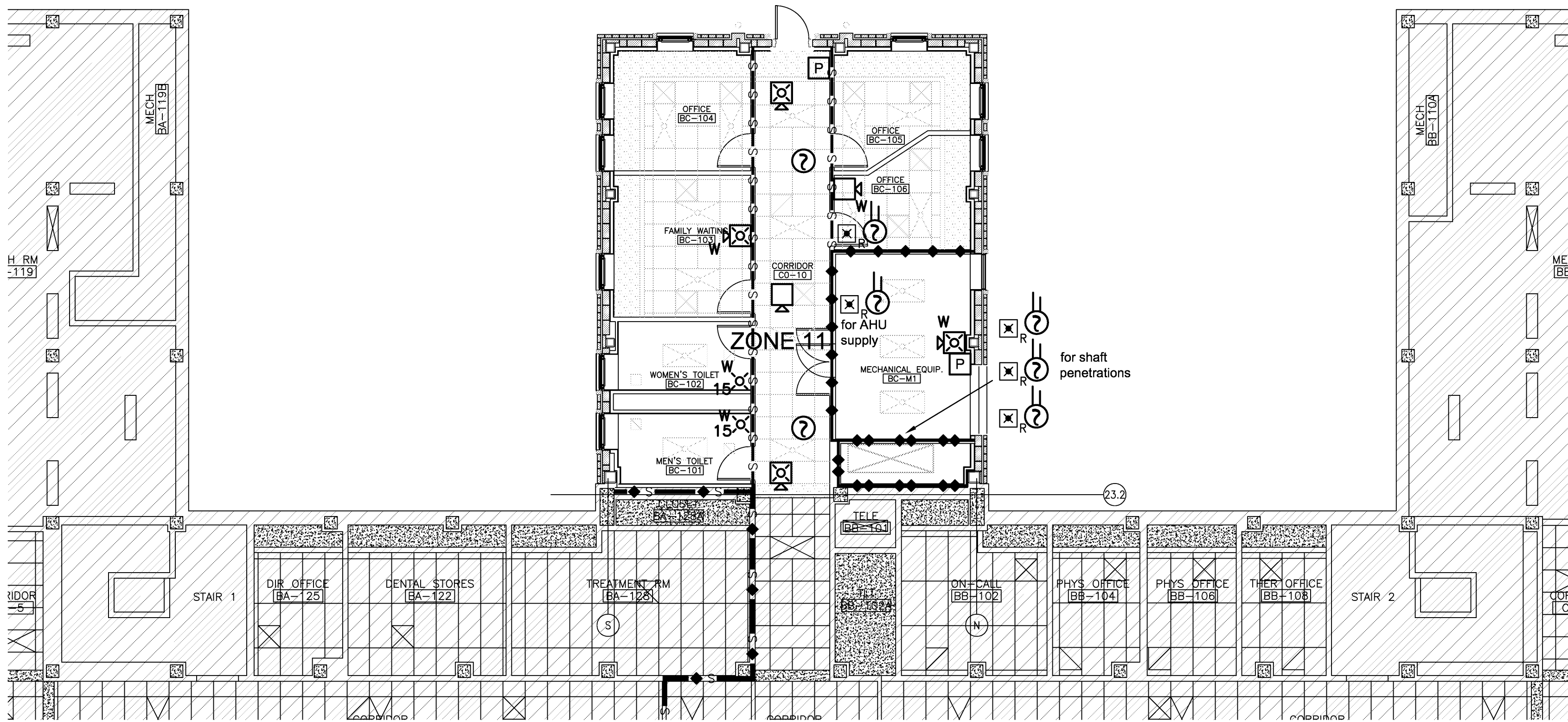


three inches = one foot  
one and one half inches = one foot  
one inch = one foot  
three quarters inch = one foot  
one half inch = one foot  
three eighths inch = one foot  
one quarter inch = one foot  
one eighth inch = one foot



BASEMENT - FIRE ALARM SYSTEM



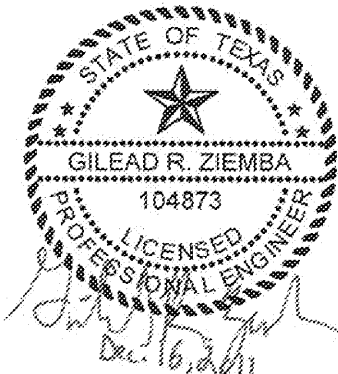
© 2010 PROTECTION DEVELOPMENT, INC. (PDI). THIS DOCUMENT, BEING DESIGNED AND BASED ON ELECTRONIC MEDIA, SHALL NOT BE ALTERED OR AMENDED IN ANY FORMAT OR MEDIUM BY ANY PARTY OTHER THAN PDI.

SCHEMATIC DESIGN SUBMISSION	08/02/10
DESIGN DEVELOPMENT SUBMISSION	09/03/10
CONSTRUCTION DOCUMENT SUBMISSION	11/22/10
ISSUED FOR BIDS	12/19/11
Revisions	Date

CONSULTANTS:



8620 N. New Braunfels Ave., Suite 100  
San Antonio, Texas 78217  
Phone: 210.828.7533 Fax: 210.828.7534  
E-Mail: mailbox@pdofire.com  
Texas Registered Engineering Firm F-2816



ARCHITECT/ENGINEERS:

WILSON ARCHITECTURAL GROUP  
505 WESTHEIMER, SUITE 200 HOUSTON, TEXAS 77056 TELEPHONE (713) 621-6744

MEP ENGINEERS  
STRUCTURAL ENGINEERS  
FIRE PROTECTION ENGINEERS  
CIVIL ENGINEERS

BURNS DeLATTE AND McCOY, INC.  
PINNACLE STRUCTURAL  
PROTECTION DEVELOPMENT INC.  
BREWER AND ESCALANTE

DO NOT SCALE THESE DRAWINGS. G.C. TO FIELD VERIFY DIMENSIONS

Drawing Title	BASEMENT - FIRE ALARM SYSTEM
Approved Project Director	

Project Title	BUILDING 11 ADDITION & INTERIOR RENOVATIONS
Location	WACO, TEXAS
Date	19 DEC 2011
Checked	GZ
Drawn	JC/KE

'ISSUED FOR BIDS'

Project Number	674A4-CSI-516
Building Number	11
Drawing Number	FA-100
Dwg. of	

FULLY SPRINKLERED

Office of  
Construction  
and Facilities  
Management

