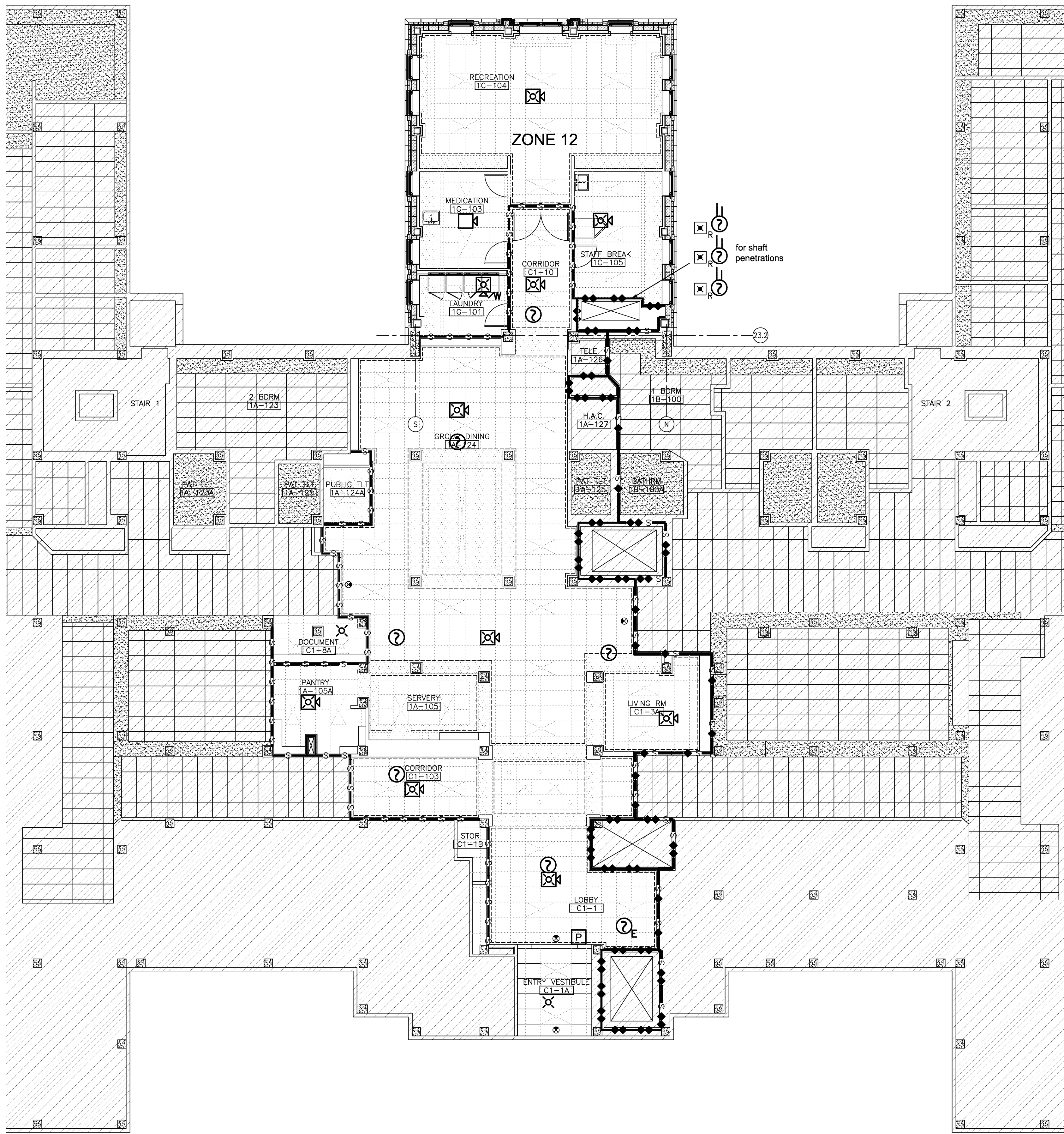
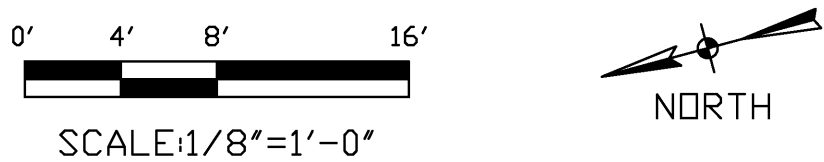


three inches = one foot
one and one half inches = one foot
one inch = one foot
three quarters inch = one foot
one half inch = one foot
three eighths inch = one foot
one quarter inch = one foot
one eighth inch = one foot



FIRST FLOOR - FIRE ALARM SYSTEM

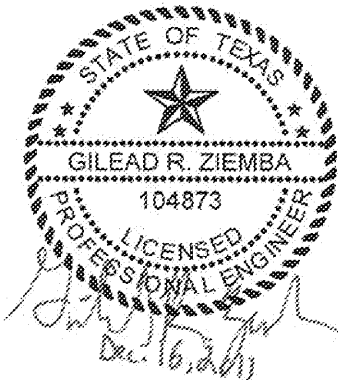


SCHEMATIC DESIGN SUBMISSION	08/02/10
DESIGN DEVELOPMENT SUBMISSION	09/03/10
CONSTRUCTION DOCUMENT SUBMISSION	11/22/10
ISSUED FOR BIDS	12/19/11
Revisions	Date

CONSULTANTS:



8620 N. New Braunfels Ave., Suite 100
San Antonio, Texas 78217
Phone: 210.828.7533 Fax: 210.828.7534
E-Mail: mailbox@pdfire.com
Texas Registered Engineering Firm F-2816



ARCHITECT/ENGINEERS:

WILSON ARCHITECTURAL GROUP
5051 WESTHEIMER, SUITE 200 HOUSTON, TEXAS 77056 TELEPHONE (713) 621-6704

MEP ENGINEERS
STRUCTURAL ENGINEERS
FIRE PROTECTION ENGINEERS
CIVIL ENGINEERS

BURNS DeLATTIE AND McCOY, INC.
PINNACLE STRUCTURAL
PROTECTION DEVELOPMENT INC.
BREWER AND ESCALANTE

DO NOT SCALE THESE DRAWINGS. G.C. TO FIELD VERIFY DIMENSIONS

Drawing Title
FIRST FLOOR - FIRE ALARM SYSTEM

Approved Project Director

Project Title
**BUILDING 11 ADDITION &
INTERIOR RENOVATIONS**

Location
WACO, TEXAS
Date
19 DEC 2011
Checked
GZ
Drawn
JC/KE

"ISSUED FOR BIDS"
Project Number
674A4-CSI-516
Building Number
11
Drawing Number
FA-1.01
Dwg. of

FULLY SPRINKLERED

Office of
Construction
and Facilities
Management

