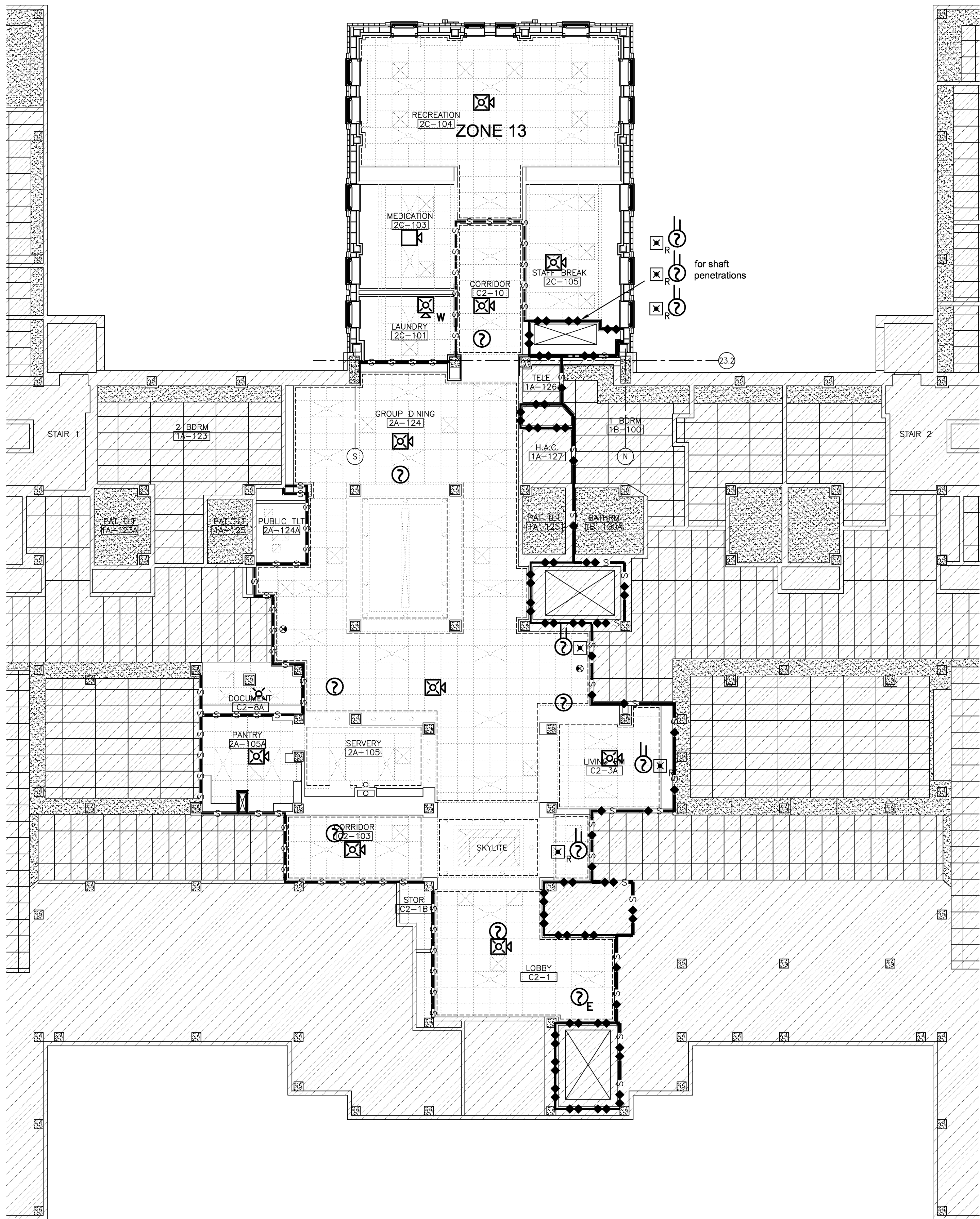


three inches = one foot
one and one half inches = one foot
one inch = one foot
three quarters inch = one foot
one half inch = one foot
three eighths inch = one foot
one quarter inch = one foot
one eighth inch = one foot



SECOND FLOOR - FIRE ALARM SYSTEM

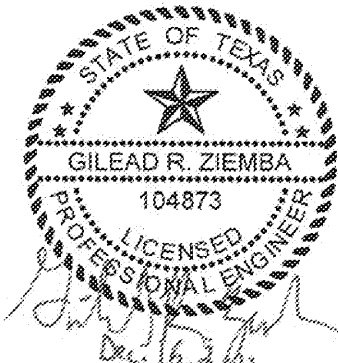


SCHEMATIC DESIGN SUBMISSION	08/02/10
DESIGN DEVELOPMENT SUBMISSION	09/03/10
CONSTRUCTION DOCUMENT SUBMISSION	11/22/10
ISSUED FOR BIDS	12/19/11
Revisions:	Date

CONSULTANTS:



8620 N. New Braunfels Ave., Suite 100
San Antonio, Texas 78217
Phone: 210.828.7533 Fax: 210.828.7534
E-Mail: mailbox@pdofire.com
Texas Registered Engineering Firm F-2816



ARCHITECT/ENGINEERS:

WILSON ARCHITECTURAL GROUP
505 WESTHEIMER, SUITE 200 HOUSTON, TEXAS 77056 TELEPHONE (713) 621-6744

MEP ENGINEERS
STRUCTURAL ENGINEERS
FIRE PROTECTION ENGINEERS
CIVIL ENGINEERS

BURNS DeLATTE AND McCOY, INC.
PINNACLE STRUCTURAL
PROTECTION DEVELOPMENT INC.
BREWER AND ESCALANTE

DO NOT SCALE THESE DRAWINGS. G.C. TO FIELD VERIFY DIMENSIONS

Drawing Title
SECOND FLOOR - LIFE SAFETY PLAN

Approved Project Director

Project Title
**BUILDING 11 ADDITION &
INTERIOR RENOVATIONS**

Location
WACO, TEXAS

Date
19 DEC 2011

Checked
GZ

Drawn
JC/KE

'ISSUED FOR BIDS'
Project Number
674A4-CSI-516
Building Number
11
Drawing Number
FA-102
Dwg. of

FULLY SPRINKLERED
**Office of
Construction
and Facilities
Management**
Department of
Veterans Affairs