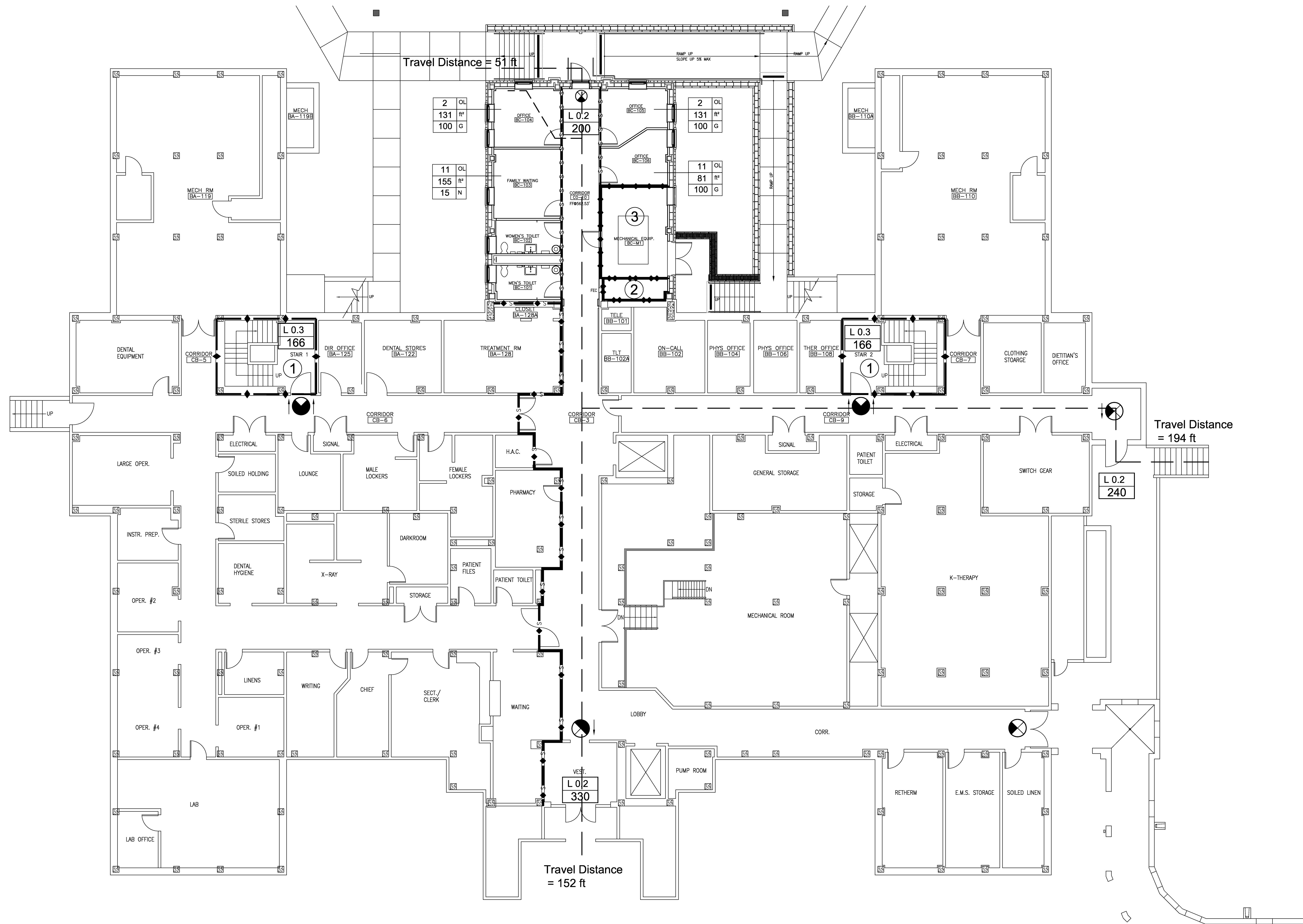


three inches = one foot  
one and one half inches = one foot  
one inch = one foot  
three quarters inch = one foot  
one half inch = one foot  
three eighths inch = one foot  
one quarter inch = one foot  
one eighth inch = one foot



## SYMBOLS AND ABBREVIATIONS

- L02**  
###
- LEVEL EGRESS WIDTH PER PERSON SERVED (2006 NFPA 101 TABLE 7.3.3.1)  
CALCULATED # OF PERSONS SERVED (DIVIDE SCALED CLEAR EGRESS WIDTH BY 0.2' / PERSON SERVED)
- S03**  
###
- STAIR EGRESS WIDTH PER PERSON SERVED (LSC Table 7.3.3.1)  
CALCULATED # OF PERSONS SERVED (DIVIDE SCALED CLEAR EGRESS WIDTH BY 0.2' / PERSON SERVED)
- 1000** **OL**  
**1000** **FT**  
**50** **PI**
- CALCULATED OCCUPANT LOAD (OL)  
AREA OF THE SPACE (FT<sup>2</sup>)  
OCCUPANT LOAD FACTOR (FT<sup>2</sup> / PERSON), NET (N) OR GROSS (G)

1 KEY NOTES

EXIT SIGNS. SOLID ARROW DENOTES DIRECTIONAL CHEVRON. (LSC SECTION 7.10 & SECTION 19.2.10)

TD = SCALED TRAVEL DISTANCE TO AN EXIT (FT)

1 HR FIRE RATED BARRIER

2 HR FIRE RATED BARRIER

1 HR FIRE/SMOKE RATED BARRIER

2 HR FIRE/SMOKE RATED BARRIER

NON-RATED SMOKE BARRIER

## Key Notes

- Existing 1-hour fire resistance rated stair enclosure.
- Provide Fire/Smoke Dampers at penetrations of rated Shaft as Required by NFPA 101.
- The walls of this room to be 1-hour fire resistance rated.

## General Notes

- The occupancy classification for this building is Health Care Nursing Home in accordance with NFPA 101.
- Construction type of the existing building is Type IIA in accordance with 2009 IBC Chapter 6.
- Maximum permitted travel distance is 200 ft.
- Automatic Sprinkler System to be provided in accordance with NFPA 13.
- Fire Alarm System to be provided in accordance with NFPA 72.
- Fire Extinguishers to be provided in accordance with NFPA 10.
- Duct penetrations of rated wall, floor, and ceiling assemblies to be provided with fire, smoke, or combination fire/smoke dampers where required by NFPA 101.
- Location of existing exit signs is not known. Exit signs are required to be provided in accordance with NFPA 101 Section 7.10.

## BASEMENT - LIFE SAFETY PLAN

0' 4' 8' 16'  
SCALE: 1/8" = 1'-0"

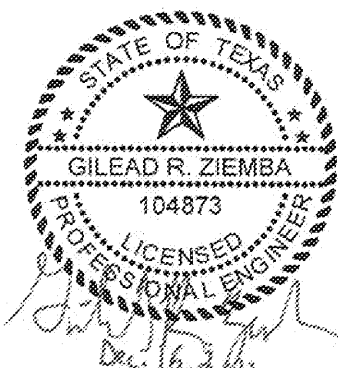


SCHEMATIC DESIGN SUBMISSION	08/02/10
DESIGN DEVELOPMENT SUBMISSION	09/03/10
CONSTRUCTION DOCUMENT SUBMISSION	11/22/10
ISSUED FOR BIDS	12/19/11
Revisions	Date

## CONSULTANTS:



8620 N. New Braunfels Ave., Suite 100  
San Antonio, Texas 78217  
Phone: 210.828.7533 Fax: 210.828.7534  
E-Mail: mailto:info@pdofire.com  
Texas Registered Engineering Firm F-2816



## ARCHITECT/ENGINEERS:

**WILSON ARCHITECTURAL GROUP**  
5051 WESTHEIMER, SUITE 200 HOUSTON, TEXAS 77056 TELEPHONE (713) 621-6704

MEP ENGINEERS  
STRUCTURAL ENGINEERS  
FIRE PROTECTION ENGINEERS  
CIVIL ENGINEERS

BURNS DeLATTE AND McCoy, INC.  
PINNACLE STRUCTURAL  
PROTECTION DEVELOPMENT INC.  
BREWER AND ESCALANTE

DO NOT SCALE THESE DRAWINGS. G.C. TO FIELD VERIFY DIMENSIONS

Drawing Title  
**BASEMENT - LIFE SAFETY PLAN**

Approved Project Director

Project Title  
**BUILDING 11 ADDITION & INTERIOR RENOVATIONS**

Location  
**WACO, TEXAS**

Date  
**19 DEC 2011**

Checked  
**GZ**

Drawn  
**JC/KE**

ISSUED FOR BIDS  
Project Number  
**674A4-CSI-516**  
Building Number  
**11**  
Drawing Number  
**CR-100**  
Dwg. of

FULLY SPRINKLERED  
**Office of Construction and Facilities Management**  
Department of Veterans Affairs