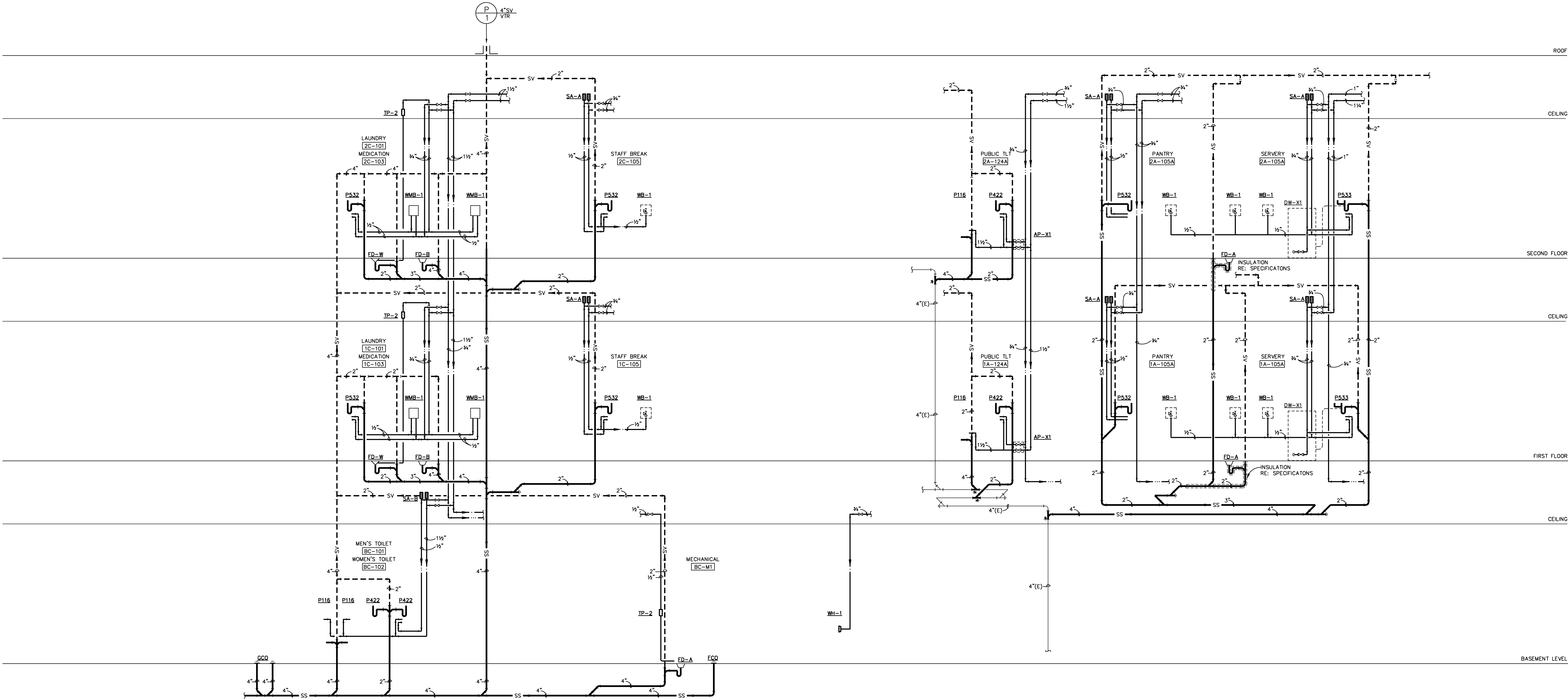


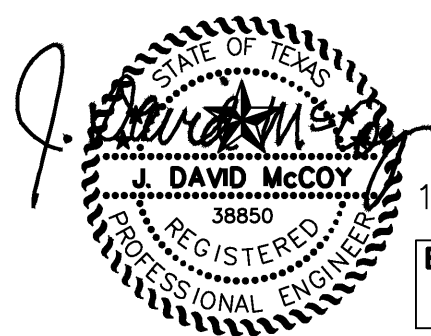
three inches = one foot
one and one half inches = one foot
one inch = one foot
three quarters inch = one foot
one half inch = one foot
three eighths inch = one foot
one quarter inch = one foot
one eighth inch = one foot



1 PLUMBING RISERS
SCALE: N.T.S.

SCHEMATIC DESIGN SUBMISSION	08/02/10
DESIGN DEVELOPMENT SUBMISSION	09/03/10
CONSTRUCTION DOCUMENT SUBMISSION	11/22/10
ISSUE FOR BIDS	12/19/11
Revisions:	Date:

CONSULTANTS:



12.16.2011
Burns, DeLotte & McCoy, Inc.
Texas Registered Engineering Firm
E-6895

ARCHITECT/ENGINEERS:

WILSON ARCHITECTURAL GROUP

5001 WESTHEIMER, SUITE 800 HOUSTON, TEXAS 77056 TELEPHONE (713) 422-4774

MEP ENGINEERS
STRUCTURAL ENGINEERS
FIRE PROTECTION ENGINEERS
CIVIL ENGINEERS

BURNS DeLATTE AND MCCOY, INC.
PINNACLE STRUCTURAL
PROTECTION DEVELOPMENT INC.
BREWER AND ESCALANTE

Drawing Title

PLUMBING
RISERS

Approved Project Director

Project Title

BUILDING 11 ADDITION AND
INTERIOR RENOVATIONS

Location

WACO, TEXAS

Date

19 DEC 2011

Checked

WS

Drawn

PJ

Project Number

674A4-CSI-516

Building Number

11

Drawing Number

PL201

Dwg. 07 of 09

Office of
Construction
and Facilities
Management

