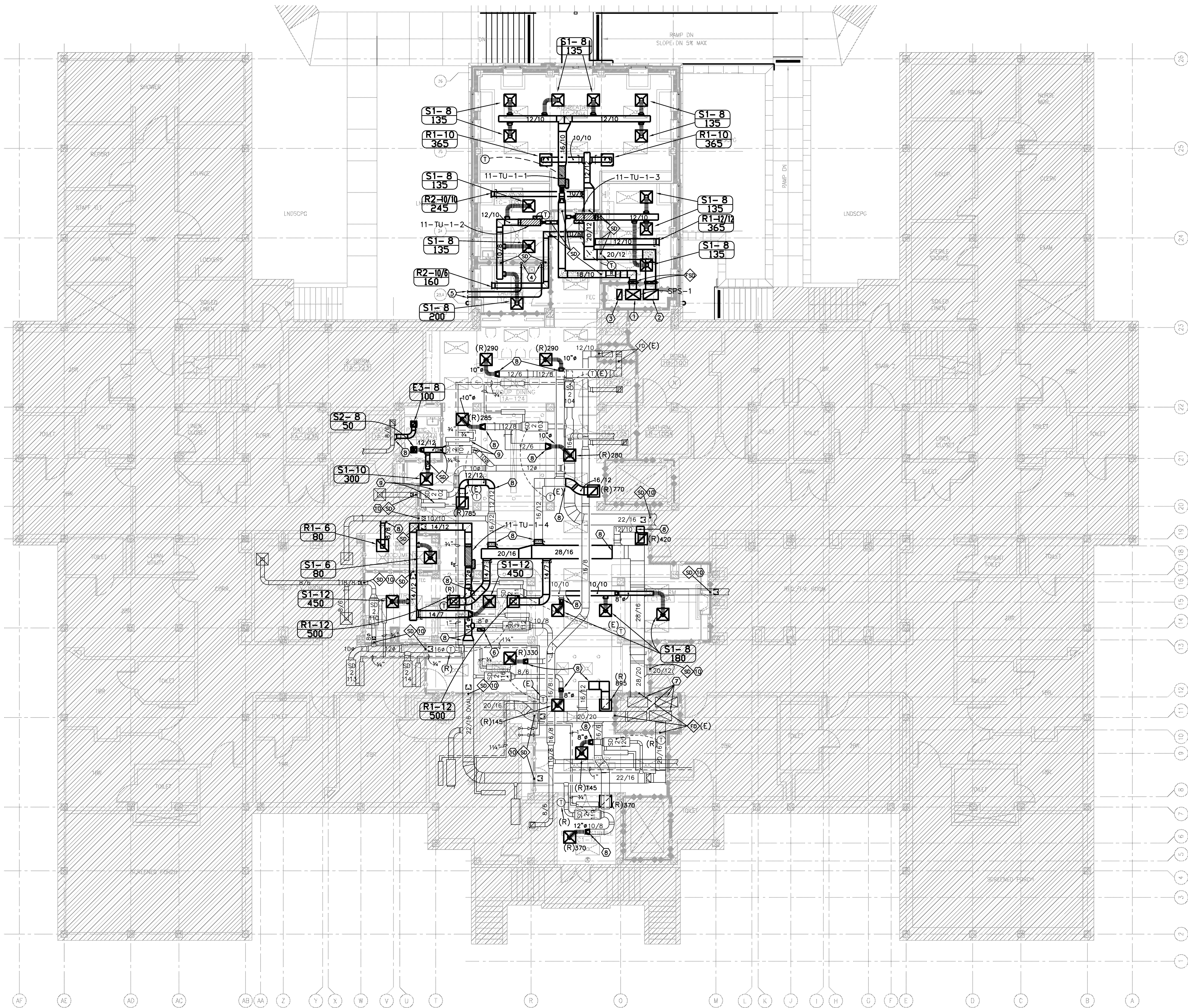


three inches = one foot
one and one half inches = one foot
one inch = one foot
three quarters inch = one foot
one half inch = one foot
three eighths inch = one foot
one quarter inch = one foot
one eighth inch = one foot



- KEYED PLAN NOTES:**
- ① 30" x 20" INSULATED SUPPLY AIR DUCT RISER.
 - ② 30" x 20" RETURN AIR DUCT RISER.
 - ③ 10" x 20" GENERAL EXHAUST DUCT RISER.
 - ④ 4" DRYER VENT DOWN IN WALL, STUB THRU WALL AT 6" ABOVE FLOOR AND MAKE CONNECTION TO DRYER. RE: DETAILS 7&9/MH503 FOR MORE INFORMATION.
 - ⑤ 4" DRYER VENT THRU WALL ABOVE CEILING AND TERMINATE WITH WALL LOUVER. RE: ARCH. FOR MORE INFORMATION.
 - ⑥ NEW 16"x6" EXHAUST DUCT RISER SERVING NEW KITCHEN EXHAUST HOOD. PROVIDE ACCESS PANEL IN DUCT ABOVE THE CEILING FOR MAINTENANCE. ROUTE DUCT VERTICALLY IN CHASE TO EF-2 IN ATTIC.
 - ⑦ REBALANCE AIR HANDLING UNIT SUPPLY AND RETURN CFM AIR QUANTITIES TO SUM OF NEW CFM QUANTITIES SHOWN PLUS EXISTING QUANTITIES MEASURED BEFORE BEGINNING WORK.
 - ⑧ CONNECT NEW DUCT TO EXIST.; REPAIR INSULATION WHERE APPLICABLE; ENSURE VAPOR BARRIER.
 - ⑨ MOVE EXIST. AIR TERMINAL & HEAT EXCHANGER FROM EXIST. LOCATION TO THE APPROX. POSITION SHOWN TO CLEAR NEW SMOKE PARTITION; MODIFY EXIST. DUCTWORK & PIPING TO ACCOMMODATE.
 - ⑩ PROVIDE SMOKE DAMPER IN EXIST. DUCT AT PENETRATION OF SMOKE PARTITION; REPAIR INSULATION WHERE APPLICABLE; ENSURE VAPOR BARRIER; PROVIDE ACCESS DOOR IN DUCT TO SERVICE DAMPER. CONNECT TO POWER SOURCE AND FIRE ALARM SYSTEM TO CLOSE UPON ALARM CONDITION, AND OPEN UPON RESETING OF FIRE ALARM PANEL.

SCHEMATIC DESIGN SUBMISSION	08/02/10
DESIGN DEVELOPMENT SUBMISSION	09/03/10
CONSTRUCTION DOCUMENT SUBMISSION	11/22/10
ISSUE FOR BIDS	12/19/11
Revisions	Date

CONSULTANTS:



12/16/11
Burns, DeLatté & McCoy, Inc.
Texas Registered Engineering Firm
F-5855

ARCHITECT/ENGINEERS:

WILSON ARCHITECTURAL GROUP
505 WESTHEIMER, SUITE 800 HOUSTON, TEXAS 77058 TELEPHONE (713) 621-8774

MEP ENGINEERS
STRUCTURAL ENGINEERS
FIRE PROTECTION ENGINEERS
CIVIL ENGINEERS

BURNS DeLATTÉ AND MCCOY, INC.
PINNACLE STRUCTURAL
PROTECTION DEVELOPMENT INC.
BREWER AND ESCALANTE

Drawing Title
MECHANICAL LEVEL 1 FLOOR PLAN
SCALE: 1/8" = 1' - 0"
Approved Project Director

Project Title
BUILDING 11 ADDITION AND INTERIOR RENOVATIONS
Location
WACO, TEXAS
Date
19 DEC 2011
Checked
FP
Drawn
JKL

Project Number
674A4-CSI-516
Building Number
11
Drawing Number
MH101
Dwg. of

Office of
Construction
and Facilities
Management



"ISSUED FOR BIDS"- FULLY SPRINKLERED