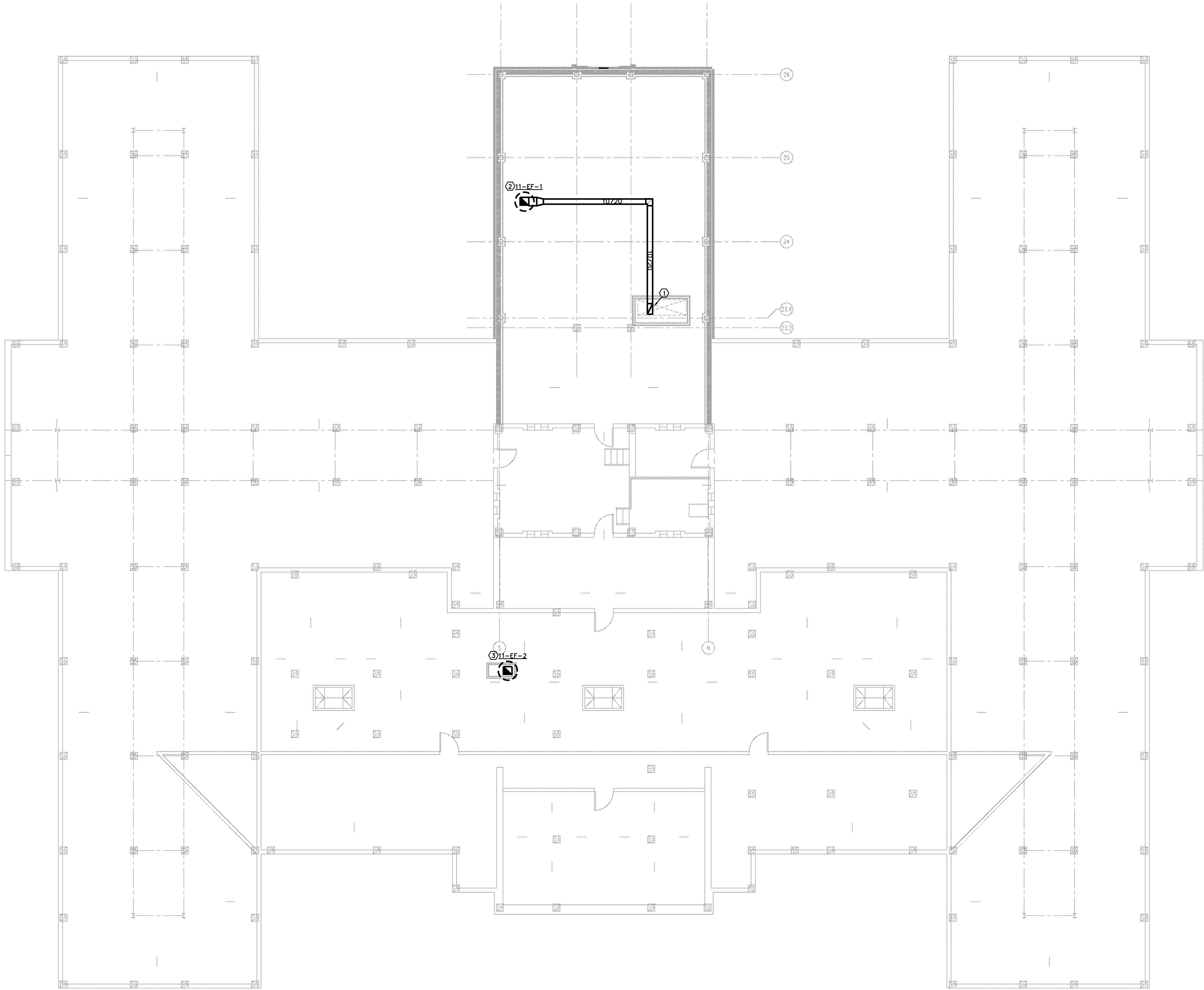


three inches = one foot
one and one half inches = one foot
one inch = one foot
three quarters inch = one foot
one half inch = one foot
three eighths inch = one foot
one quarter inch = one foot
one eighth inch = one foot



- KEYED PLAN NOTES:
- ① 10" X 20" GENERAL EXHAUST DUCT FROM LEVEL BELOW.
 - ② TRANSITION 10" X 20" EXHAUST DUCT TO INLET SIZE OF EXHAUST FAN AND ROUTE UP THROUGH ROOF TO 11-EF-1.
 - ③ TRANSITION 16" X 6" EXHAUST DUCT TO INLET SIZE OF EXHAUST FAN AND ROUTE UP THROUGH ROOF TO 11-EF-2.

SCHEMATIC DESIGN SUBMISSION	08/02/10
DESIGN DEVELOPMENT SUBMISSION	09/03/10
CONSTRUCTION DOCUMENT SUBMISSION	11/22/10
ISSUE FOR BIDS	12/19/11
Revisions	Date

CONSULTANTS:



12/16/11
Burns, DeLatté & McCoy, Inc.
Texas Registered Engineering Firm
F-5855

ARCHITECT/ENGINEERS:

WILSON ARCHITECTURAL GROUP
505 WESTHEIMER, SUITE 800 HOUSTON, TEXAS 77058 TELEPHONE (713) 621-8774

MEP ENGINEERS
STRUCTURAL ENGINEERS
FIRE PROTECTION ENGINEERS
CIVIL ENGINEERS
BURNS DeLATTÉ AND MCCOY, INC.
PINNACLE STRUCTURAL
PROTECTION DEVELOPMENT INC.
BREWER AND ESCALANTE

Drawing Title	MECHANICAL ATTIC FLOOR PLAN SCALE: 1/8" = 1' - 0"
Approved Project Director	

Project Title	BUILDING 11 ADDITION AND INTERIOR RENOVATIONS
Location	WACO, TEXAS
Date	19 DEC 2011
Checked	JDM
Drawn	PHJ

Project Number	674A4-CSI-516
Building Number	11
Drawing Number	MH103
Dwg. of	

Office of
Construction
and Facilities
Management

