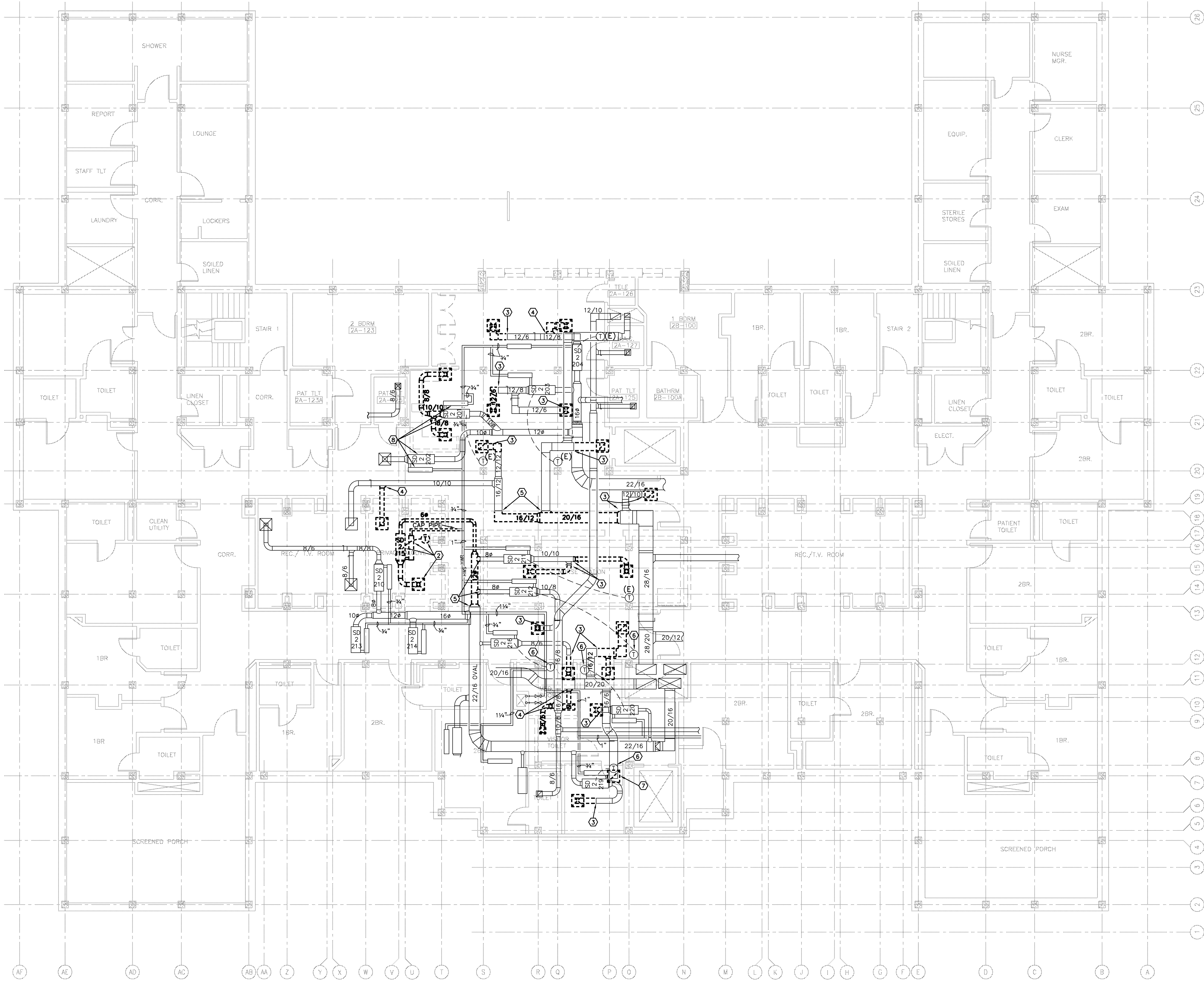


three inches = one foot
one and one half inches = one foot
one inch = one foot
three quarters inch = one foot
one half inch = one foot
three eighths inch = one foot
one quarter inch = one foot
one eighth inch = one foot



- KEYED PLAN NOTES:**
- 1 REMOVE SUPPLY DUCT FROM AIR TERMINAL TO POINTS SHOWN; IF INDICATED, REMOVE ASSOCIATED DIFFUSERS.
 - 2 REMOVE EXISTING AIR DEVICE, VAV TERMINAL UNIT, HEAT EXCHANGER AND ASSOCIATED DUCTWORK AND HW PIPING AS INDICATED. RETURN TERMINAL UNIT AND HEAT EXCHANGER TO OWNER'S STOCK. RELOCATED ASSOCIATED THERMOSTAT TO LOCATION SHOWN ON RENO PLAN & CONNECT TO NEW TERMINAL 11-TU-1-4.
 - 3 CUT EXIST. DUCT & REMOVE DASHED PORTION & ANY ASSOCIATED DIFFUSERS; MODIFY DUCT PER RENO PLAN.
 - 4 REMOVE BRANCH DUCT & ANY ASSOCIATED DIFFUSERS; PATCH TRUNK DUCT AIR TIGHT & REPAIR INSULATION; ENSURE VAPOR BARRIER.
 - 5 REMOVE DUCTWORK TO POINTS SHOWN; PREPARE EXIST. DUCT FOR MODIFICATION PER RENO PLAN.
 - 6 RELOCATE EXIST. THERMOSTAT TO NEW POSITION PER RENO PLAN.
 - 7 REMOVE GRILLE AT BOTTOM OF DUCT, MODIFY DUCT PER RENO PLAN.
 - 8 RE: RENO PLAN FOR MODIFICATIONS TO THESE AIR TERMINALS & HEAT EXCHANGERS.

SCHEMATIC DESIGN SUBMISSION	08/02/10
DESIGN DEVELOPMENT SUBMISSION	09/03/10
CONSTRUCTION DOCUMENT SUBMISSION	11/22/10
ISSUE FOR BIDS	12/19/11
Revisions	Date

CONSULTANTS:



12/16/11
Burns, DeLatte & McCoy, Inc.
Texas Registered Engineering Firm
F-5855

ARCHITECT/ENGINEERS:

WILSON ARCHITECTURAL GROUP
505 WESTHEIMER, SUITE 800 HOUSTON, TEXAS 77058 TELEPHONE (713) 421-4714

MEP ENGINEERS
STRUCTURAL ENGINEERS
FIRE PROTECTION ENGINEERS
CIVIL ENGINEERS

BURNS DeLATTE AND MCCOY, INC.
PINNACLE STRUCTURAL
PROTECTION DEVELOPMENT INC.
BREWER AND ESCALANTE

Drawing Title
**MECHANICAL LEVEL 2
DEMOLITION PLAN**
SCALE: 1/8" = 1' - 0"

Approved Project Director

Project Title
**BUILDING 11 ADDITION AND
INTERIOR RENOVATIONS**

Location
WACO, TEXAS

Date
19 DEC 2011

Checked
JDM

Drawn
PHJ

Project Number
674A4-CSI-516

Building Number
11

Drawing Number
MH105
Dwg. of

Office of
Construction
and Facilities
Management

