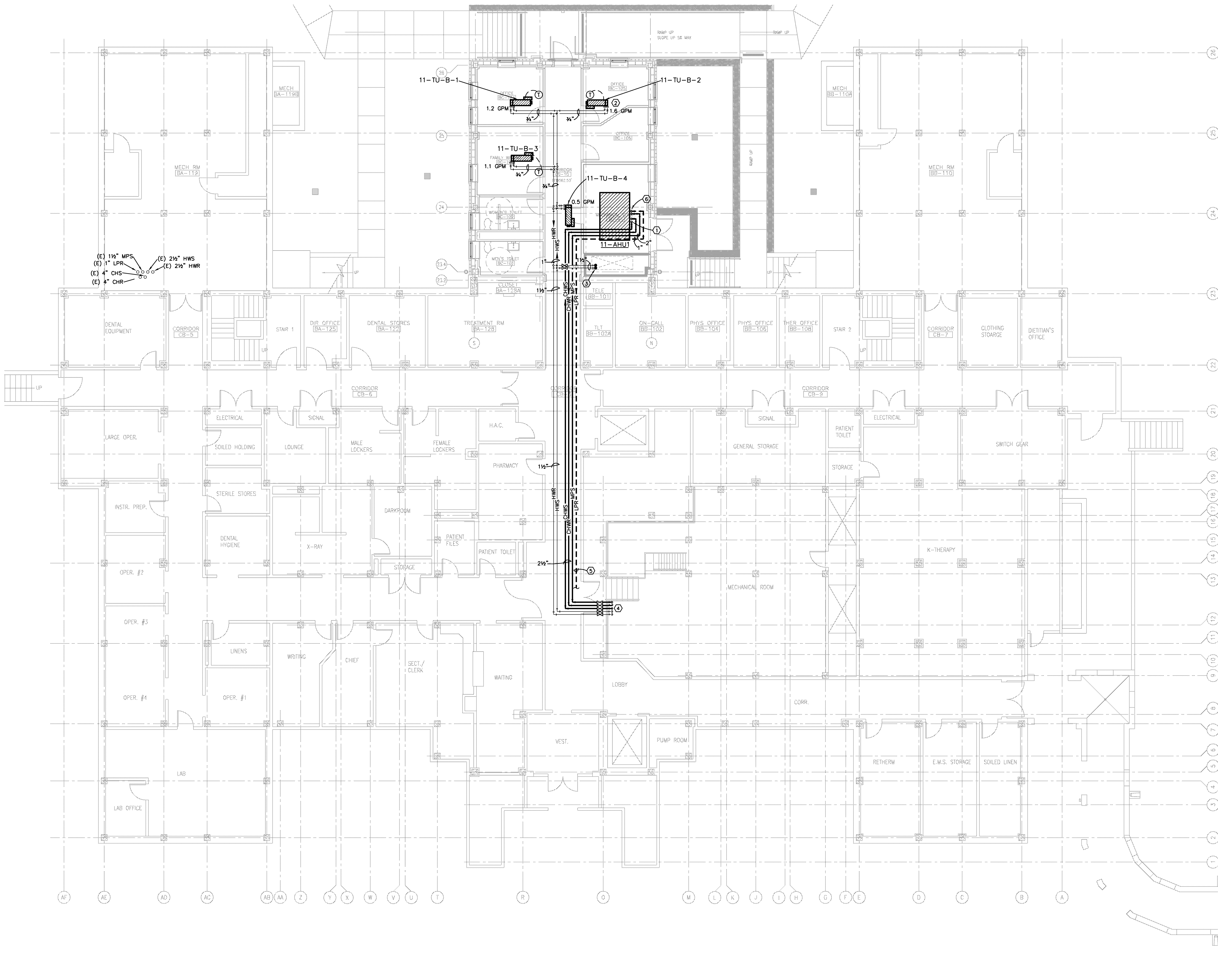


three eighths inch = one foot  
one eighth inch = one foot  
one quarter inch = one foot  
one half inch = one foot  
three quarters inch = one foot  
one inch = one foot  
one and one half inches = one foot  
two inches = one foot  
three inches = one foot



- KEYED PLAN NOTES:
- ① 2 1/2" CHS AND CHR DROP TO COOLING COIL ON 11-AHU-1.
  - ② 3-WAY CONTROL VALVE AT THIS UNIT.
  - ③ 1 1/2" HWS AND HWR RISER UP TO LEVELS 1 AND 2.
  - ④ CONNECT NEW 1 1/2" HWS AND HWR TO EXISTING RISER AT THIS LOCATION.
  - ⑤ 1" LPR ROUTED IN PIPE BASEMENT BELOW. CONNECT TO EXISTING STEAM CONDENSATE RETURN LINE IN PIPE BASEMENT OF ADEQUATE SIZE, IN THIS AREA.
  - ⑥ 2" MPS DROP TO PREHEAT COIL ON 11-AHU-1. 1" LPR DOWN THROUGH FLOOR TO PIPE BASEMENT BELOW. CONNECT TO EXISTING LPR LINE IN PIPE BASEMENT.

SCHEMATIC DESIGN SUBMISSION	08/02/10
DESIGN DEVELOPMENT SUBMISSION	09/03/10
CONSTRUCTION DOCUMENT SUBMISSION	11/22/10
ISSUE FOR BIDS	12/19/11
Revisions	Date

CONSULTANTS:

**DAVID MCCOY**  
REGISTERED PROFESSIONAL ENGINEER  
12/16/11  
Burns, DeLatté & McCoy, Inc.  
Texas Registered Engineering Firm  
F-5855

ARCHITECT/ENGINEERS:

**WILSON ARCHITECTURAL GROUP**  
505 WESTHEIMER, SUITE 800 HOUSTON, TEXAS 77058 TELEPHONE (713) 621-8774

MEP ENGINEERS  
STRUCTURAL ENGINEERS  
FIRE PROTECTION ENGINEERS  
CIVIL ENGINEERS

BURNS DeLATTÉ AND MCCOY, INC.  
PINNACLE STRUCTURAL  
PROTECTION DEVELOPMENT INC.  
BREWER AND ESCALANTE

Drawing Title

**MECHANICAL BASEMENT PIPING PLAN**  
SCALE: 1/8" = 1' - 0"

Approved Project Director

Project Title

**BUILDING 11 ADDITION AND INTERIOR RENOVATIONS**

Location

**WACO, TEXAS**

Date

**19 DEC 2011**

Checked

**FP**

Drawn

**JKL**

Project Number

**674A4-CSI-516**

Building Number

**11**

Drawing Number

**MH106**

Dwg. of

Office of Construction and Facilities Management

Department of Veterans Affairs