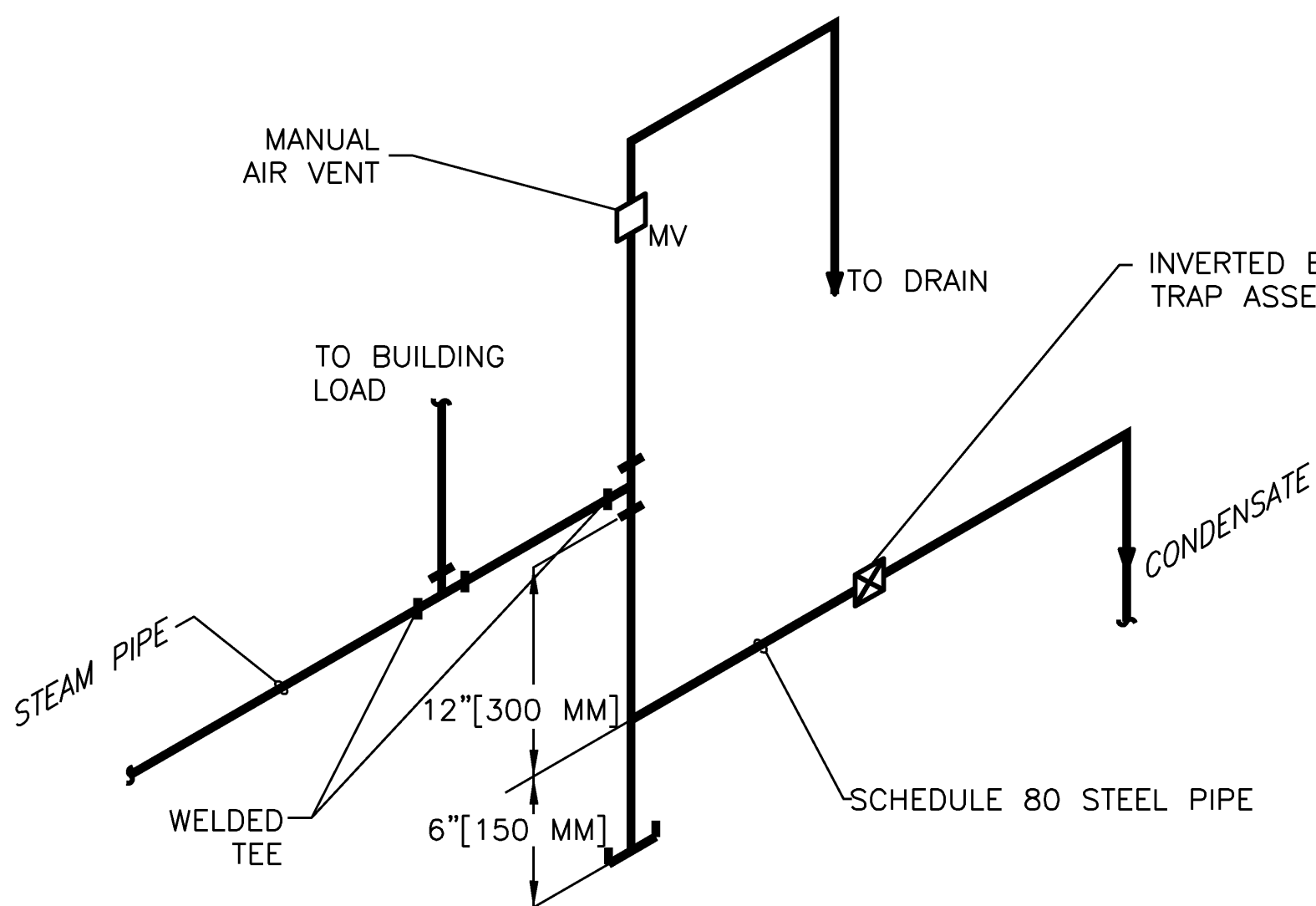
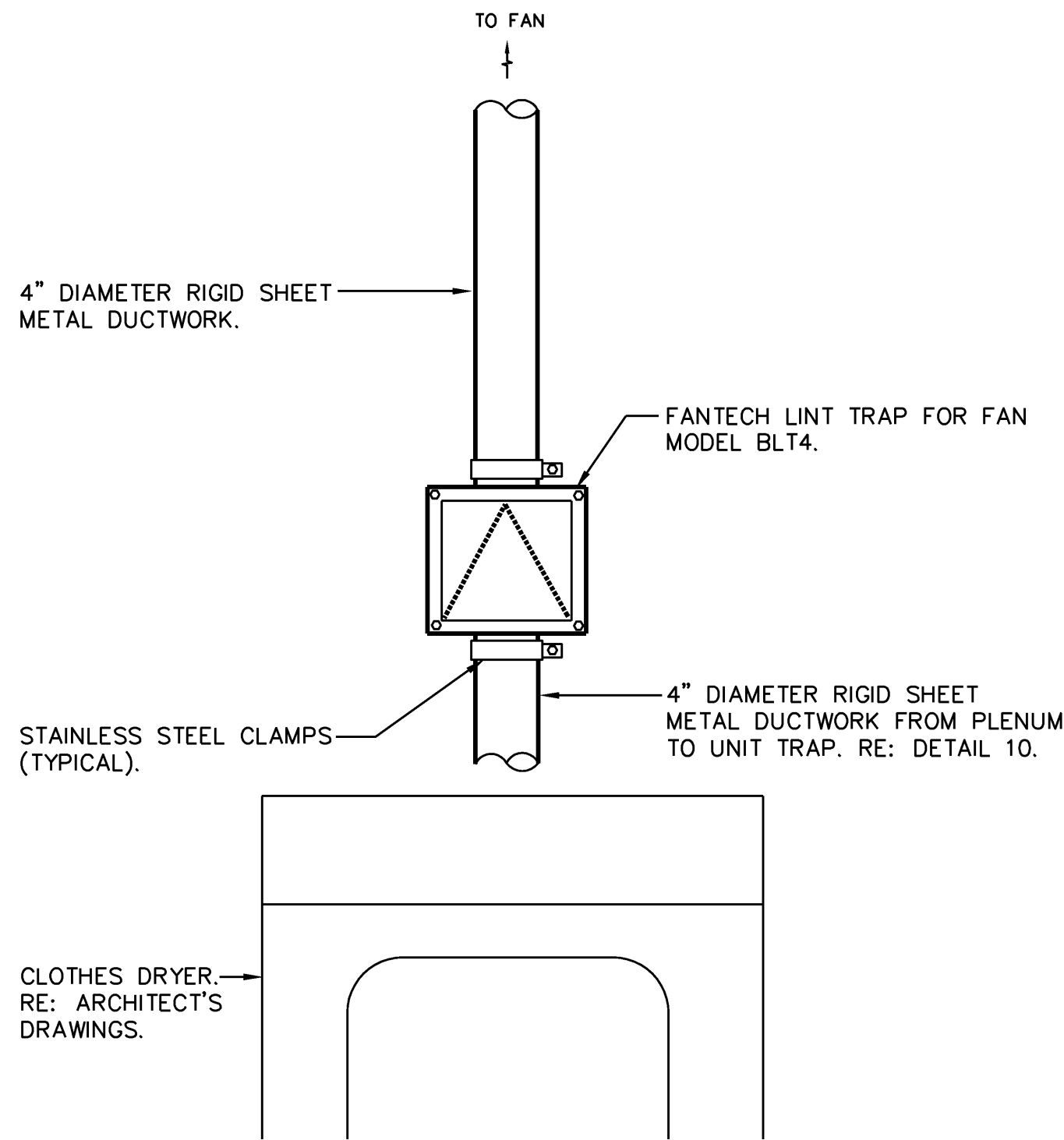


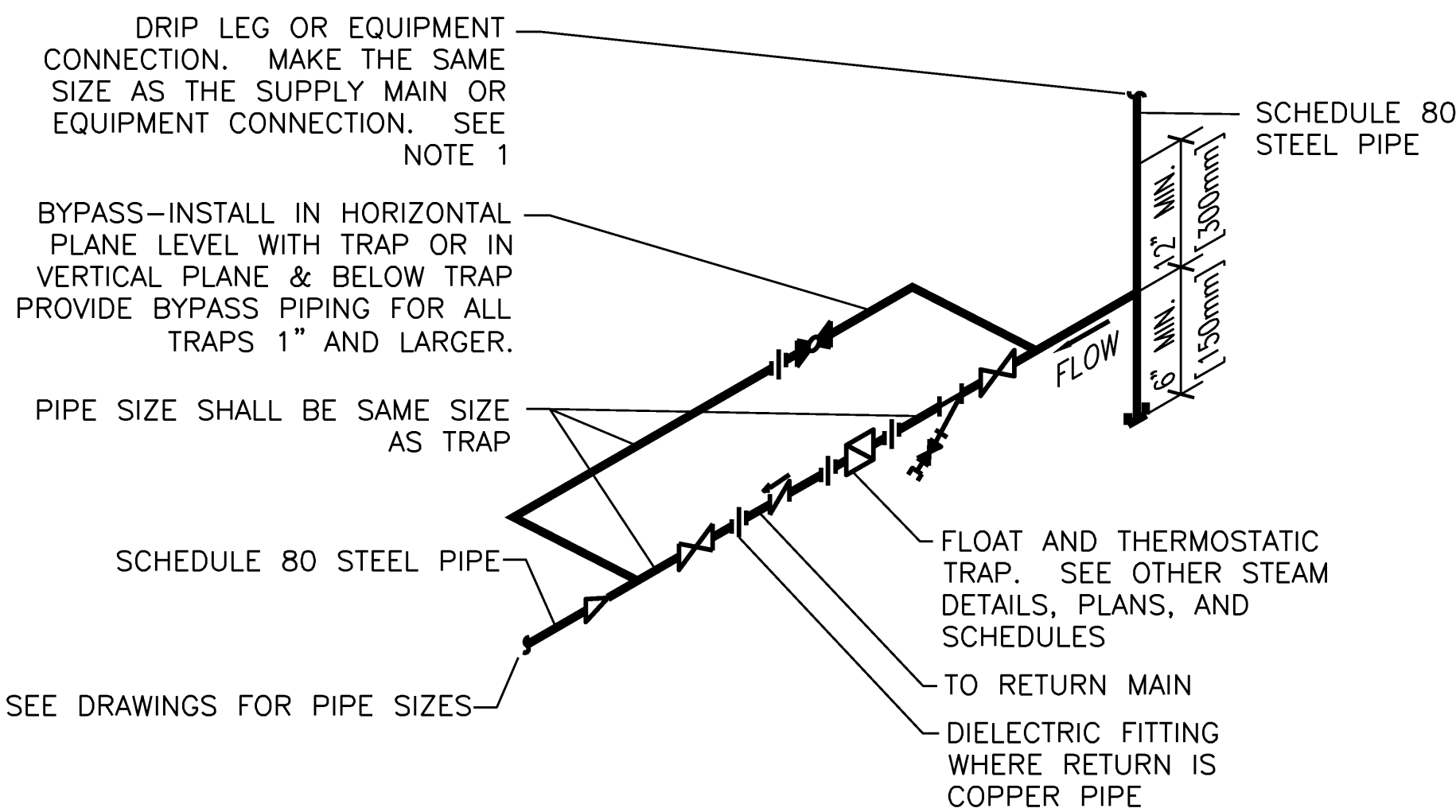
one eighth inch = one foot
0 4 8 16
one quarter inch = one foot
0 4 8
three eighths inch = one foot
0 4 8
one half inch = one foot
0 6
three quarters inch = one foot
0 6
one inch = one foot
0 6
one and one half inches = one foot
0 6
two inches = one foot
0 6
three inches = one foot
0 6



7 END OF STEAM LINE DRIP TRAP
NTS

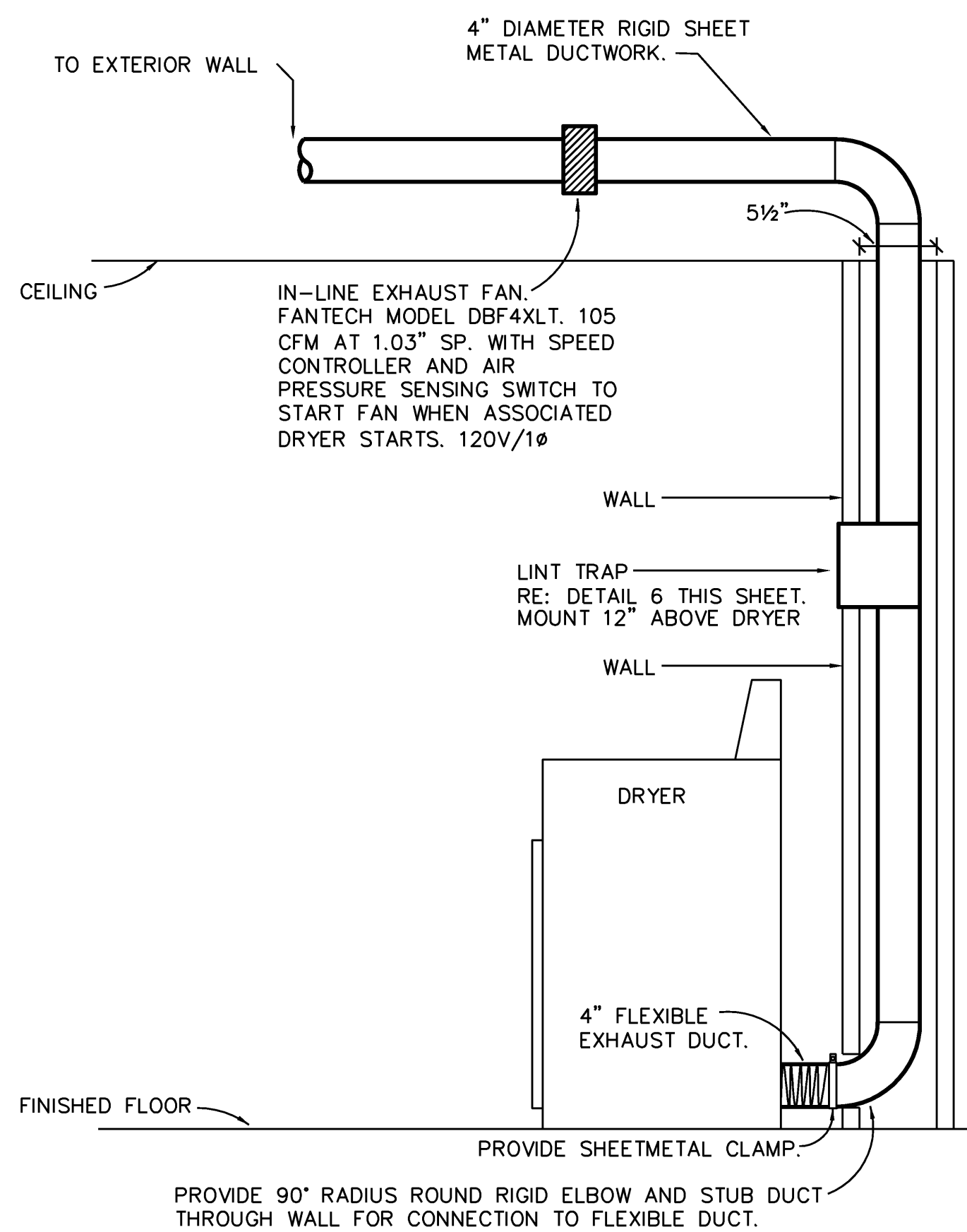


6 CLOTHES DRYER LINT TRAP INSTALLATION DETAIL
NTS



NOTE:
1. ALL DRIP POINTS ON STEAM MAINS SHALL BE PROVIDED WITH A 12" MINIMUM HIGH DRIP LEG FROM BOTTOM OF STEAM MAIN TO TRAP INLET. DRIP LEG SHALL HAVE 6" SCALE POCKET BELOW TRAP INLET.

5 FLOAT AND THERMOSTATIC STEAM TRAP ASSEMBLY
NTS



9 CLOTHES DRYER LINT TRAP INSTALLATION DETAIL
NTS

SCHEMATIC DESIGN SUBMISSION	08/02/10
DESIGN DEVELOPMENT SUBMISSION	09/03/10
CONSTRUCTION DOCUMENT SUBMISSION	11/22/10
ISSUE FOR BIDS	12/19/11
Revisions	Date

CONSULTANTS:



12/16/11
Burns, DeLatté & McCoy, Inc.
Texas Registered Engineering Firm
F-585

ARCHITECT/ENGINEERS:

WILSON ARCHITECTURAL GROUP
5051 WESTHEIMER, SUITE 800 HOUSTON, TEXAS 77056 TELEPHONE (713) 621-6774

MEP ENGINEERS
STRUCTURAL ENGINEERS
FIRE PROTECTION ENGINEERS
CIVIL ENGINEERS
BURNS DeLATTÉ AND MCCOY, INC.
PINNACLE STRUCTURAL
PROTECTION DEVELOPMENT INC.
BREWER AND ESCALANTE

Drawing Title

MECHANICAL
DETAILS

Approved Project Director

Project Title

BUILDING 11 ADDITION AND
INTERIOR RENOVATIONS

Location

WACO, TEXAS

Date

19 DEC 2011

Checked

FP

Drawn

JKL

Project Number

674A4-CSI-516

Building Number

11

Drawing Number

11
MH503

Dwg. of

Office of
Construction
and Facilities
Management

