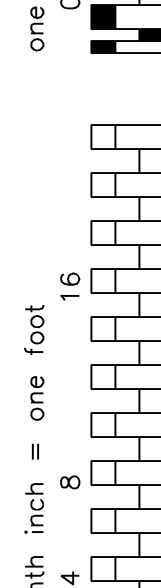
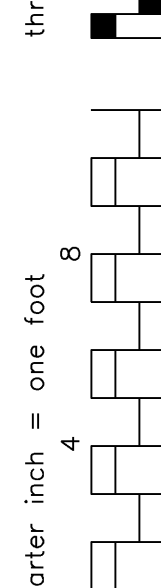
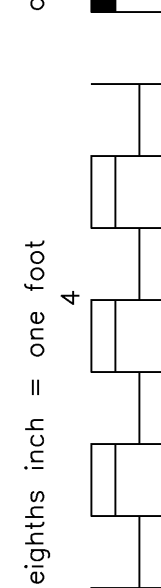
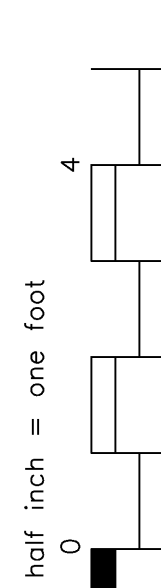
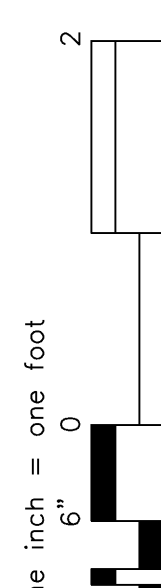
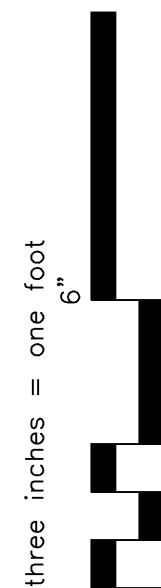


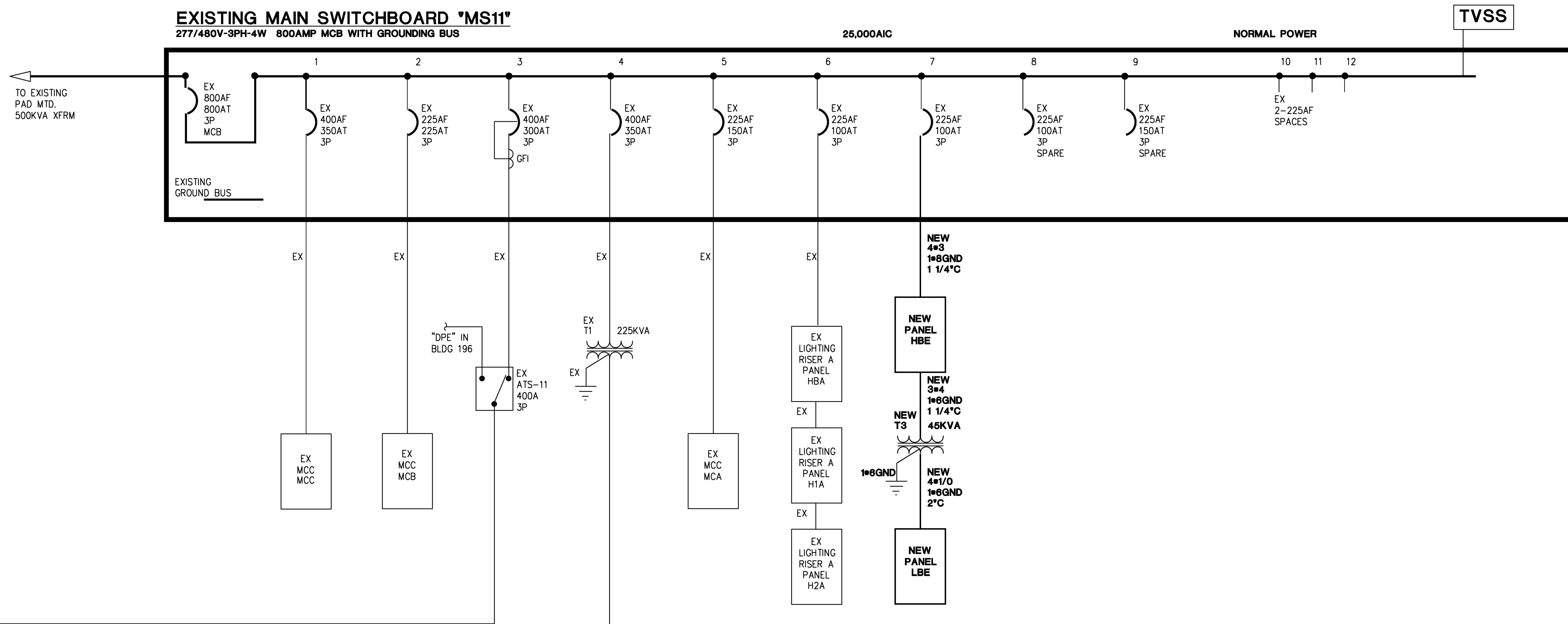
three inches = one foot
one and one half inches = one foot
one inch = one foot
three quarters inch = one foot
one half inch = one foot
three eighths inch = one foot
one quarter inch = one foot
one eighth inch = one foot



VA FORM 08-6231

EXISTING MAIN SWITCHBOARD "MS11"

277/480V-3PH-4W 800AMP MCB WITH GROUNDING BUS



GENERAL NOTES

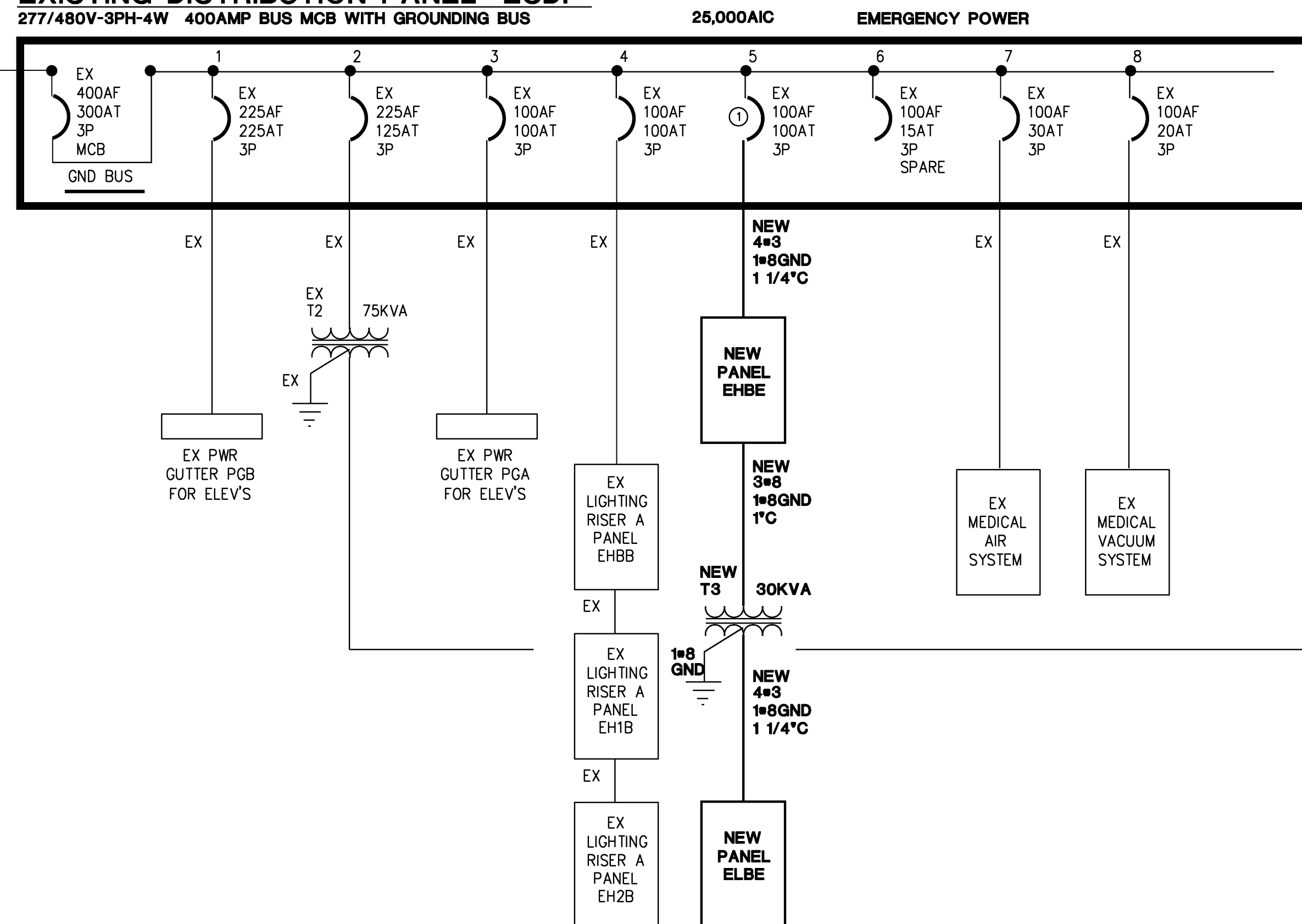
1. COORDINATE ALL NEW WORK WITH EXISTING CONDITIONS.

KEYED NOTES

① ADJUST TRIP SETTINGS TO 100AT FOR EXISTING CIRCUIT BREAKER.

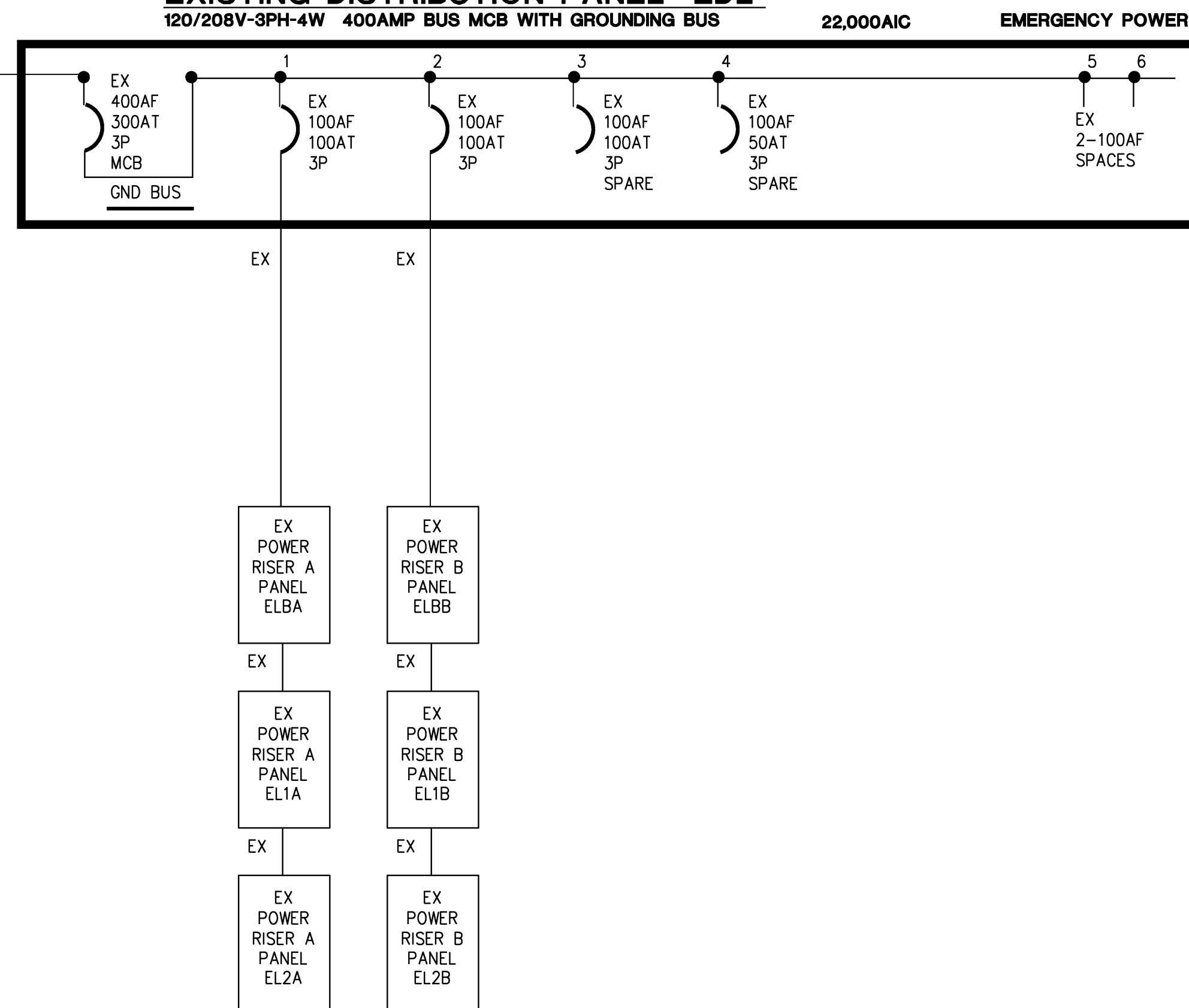
EXISTING DISTRIBUTION PANEL "ESDP"

277/480V-3PH-4W 400AMP BUS MCB WITH GROUNDING BUS



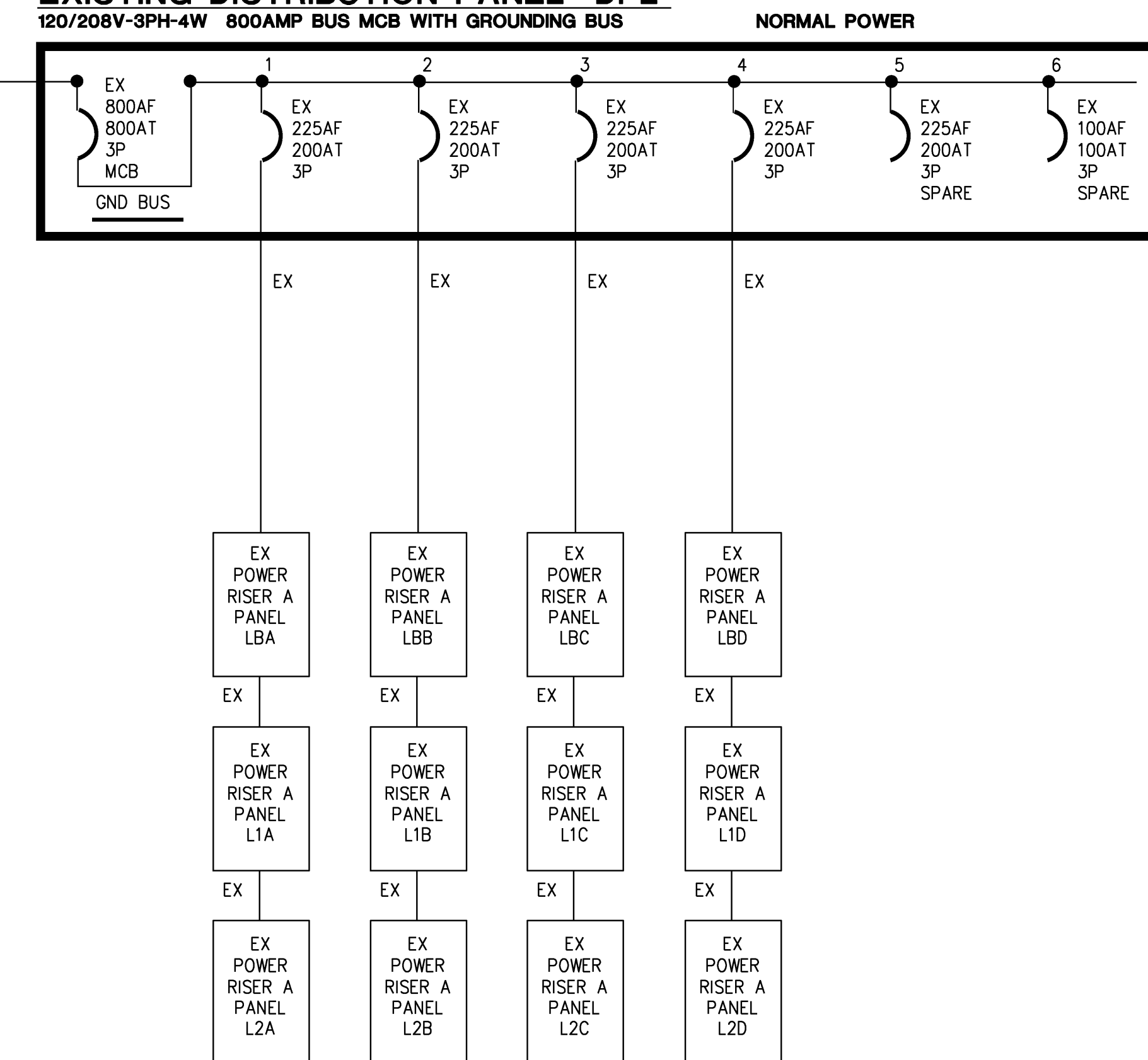
EXISTING DISTRIBUTION PANEL "EDL"

120/208V-3PH-4W 400AMP BUS MCB WITH GROUNDING BUS



EXISTING DISTRIBUTION PANEL "DPL"

120/208V-3PH-4W 800AMP BUS MCB WITH GROUNDING BUS



① ONE-LINE DIAGRAM ELECTRICAL

SCALE: NOT TO SCALE

BLD: 10

SCHEMATIC DESIGN SUBMISSION	08/02/10
DESIGN DEVELOPMENT SUBMISSION	09/03/10
CONSTRUCTION DOCUMENT SUBMISSION	11/22/10
ISSUE FOR BIDS	12/19/11
Revisions:	Date

CONSULTANTS:



12-19-11

Burns, DeLatté & McCoy, Inc.
Texas Registered Engineering Firm
F-685

ARCHITECT/ENGINEERS:

WILSON ARCHITECTURAL GROUP

5050 WESTHEIMER, SUITE 800 HOUSTON, TEXAS 77056 TELEPHONE (713) 621-6704

MEP ENGINEERS
STRUCTURAL ENGINEERS
FIRE PROTECTION ENGINEERS
CIVIL ENGINEERS

BURNS DeLATTÉ AND McCOY, INC.
PINNACLE STRUCTURAL
PROTECTION DEVELOPMENT INC.
BREWER AND ESCALANTE

Drawing Title

ONE-LINE DIAGRAM
ELECTRICAL
NO SCALE

Approved Project Director

Project Title

BUILDING 11 ADDITION AND
INTERIOR RENOVATIONS

Location

WACO, TEXAS

Date

19 DEC 2011

Checked

FP

Drawn

JP

Project Number

674A4-C5I-516

Building Number

11

Drawing Number

11

ES400

Dwg. of

Office of
Construction
and Facilities
Management

