

STAT ☐ CAMERA - STATIONARY

PTZ ☐ CAMERA - PAN, TILT, ZOOM

GENERAL NOTES

A. SURVEILLANCE CAMERA LOCATIONS ARE SHOWN FOR PLACEMENT LOCATION ONLY & CAMERA'S ARE NOT INCLUDED IN THE CONTRACT. ELECTRICAL ROUGH-IN IS INCLUDED IN THE CONTRACT. REFER TO ELECTRICAL DRAWINGS FOR ADDITIONAL INFORMATION.

FOR CONSTRUCTION



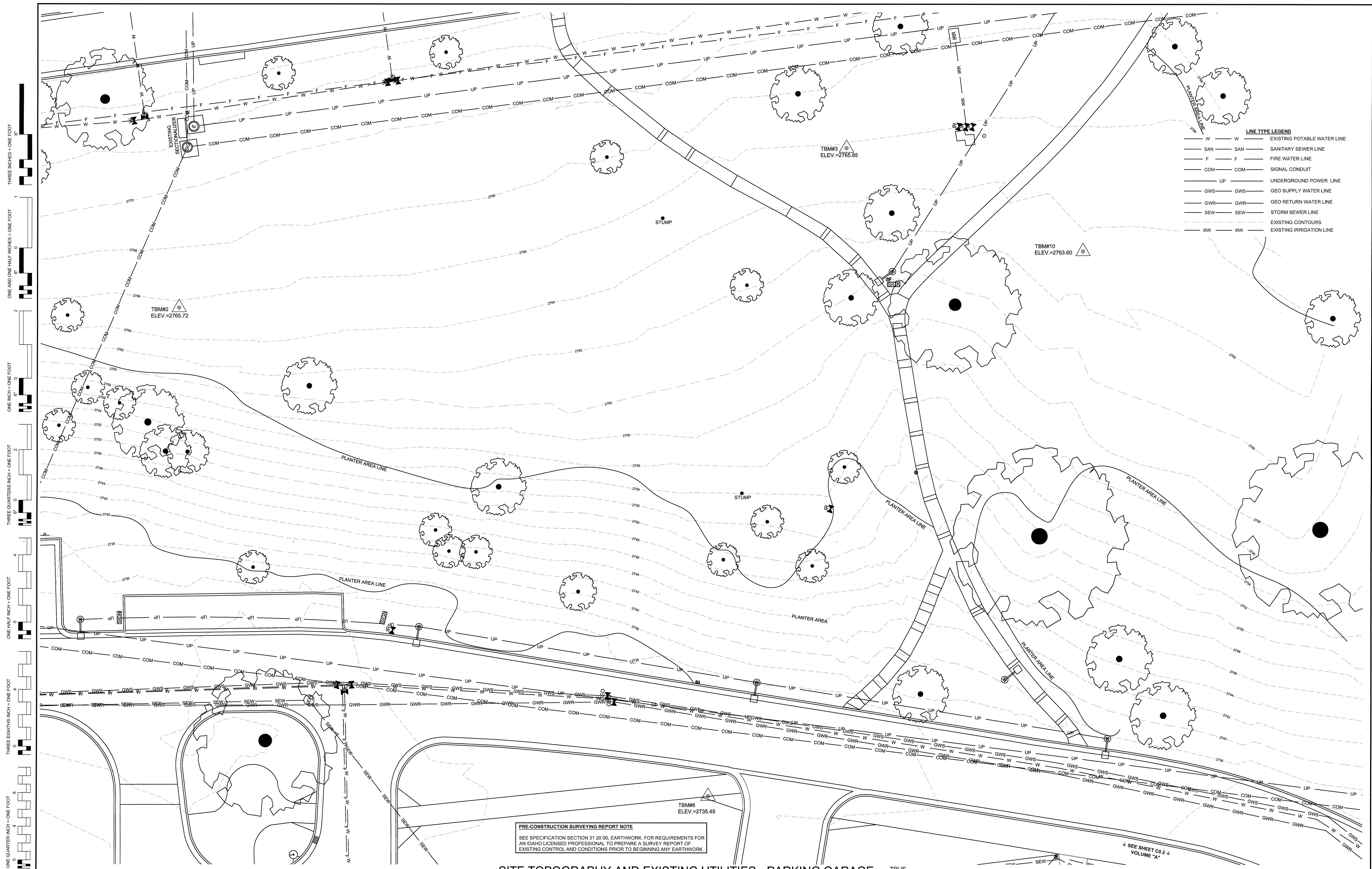
Professional Engineer Seal for Steven C. Turney, State of Idaho, License AR-1885, expires 05/13/16.

Architects and Planners, Chartered

408 E. Parkcenter Blvd, Suite 205, Boise Idaho 83706

DATE	05/13/2016
PROJECT NO.	531-322
DRAWING NO.	G3.0
DWG	3 OF 126

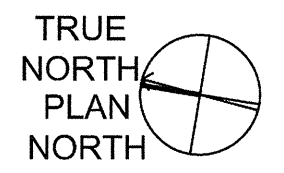
DEPARTMENT OF VETERANS AFFAIRS



LINE TYPE LEGEND		
W	W	EXISTING POTABLE WATER LINE
SAN	SAN	SANITARY SEWER LINE
F	F	FIRE WATER LINE
COM	COM	SIGNAL CONDUIT
UP	UP	UNDERGROUND POWER LINE
GWS	GWS	GEO SUPPLY WATER LINE
GWR	GWR	GEO RETURN WATER LINE
SEW	SEW	STORM SEWER LINE
		EXISTING CONTOURS
IRR	IRR	EXISTING IRRIGATION LINE

PRE-CONSTRUCTION SURVEYING REPORT NOTE
SEE SPECIFICATION SECTION 31 20 00, EARTHWORK, FOR REQUIREMENTS FOR AN IDAHO LICENSED PROFESSIONAL TO PREPARE A SURVEY REPORT OF EXISTING CONTROL AND CONDITIONS PRIOR TO BEGINNING ANY EARTHWORK.

SITE TOPOGRAPHY AND EXISTING UTILITIES - PARKING GARAGE



SEE SHEET C0.2
VOLUME "A"

THREE INCHES = ONE FOOT
ONE AND ONE HALF INCHES = ONE FOOT
ONE INCH = ONE FOOT
THREE QUARTERS INCH = ONE FOOT
ONE HALF INCH = ONE FOOT
THREE EIGHTHS INCH = ONE FOOT
ONE QUARTER INCH = ONE FOOT
ONE EIGHTH INCH = ONE FOOT

REVISIONS	DATE

B & A Engineers, Inc.
Consulting Engineers, Surveyors & Planners
5505 West Franklin Road Boise, ID 83705
Voice: 208.343.3381 Fax: 208.342.5792
Web: <http://www.baengineers.com>

ZGA ARCHITECTS & PLANNERS, CHARTERED
408 E. Parkcenter Blvd., Suite 205 | Boise, Idaho 83706 | t: (208) 345.8872 | f: (208) 343.7162 | www.zga.com

CAD FILE NAME:
531-322_C0.1_A.dwg
XREF FILE NAME:
xVAbord.dwg

DRAWING TITLE	
SITE TOPOGRAPHY AND EXISTING UTILITIES FOR PARKING GARAGE	
APPROVED: CHIEF OF FACILITY MANAGEMENT SERVICE	
APPROVED: MEDICAL CENTER DIRECTOR	

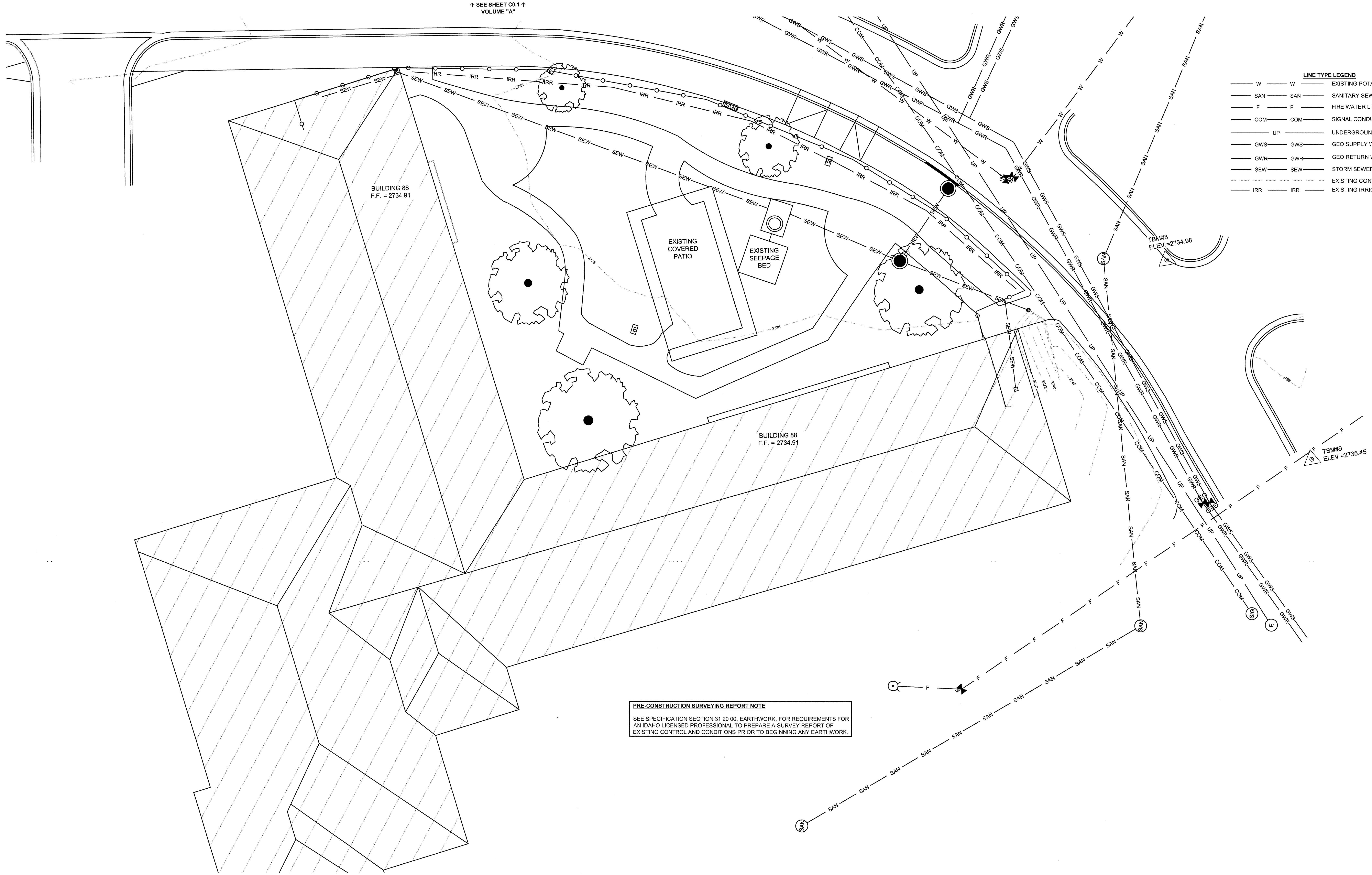
PROJECT TITLE	
VAMC PARKING GARAGE VOLUME A	
BUILDING NUMBER	CHECKED
125	JDC
LOCATION	DRAWN
BOISE, IDAHO	CAA

DATE	05/13/2016
PROJECT NO.	531-322
DRAWING NO.	C0.1
DWG	4 OF 126

FOR CONSTRUCTION

VAMC
DEPARTMENT OF VETERANS AFFAIRS

THREE INCHES = ONE FOOT
ONE AND ONE HALF INCHES = ONE FOOT
ONE INCH = ONE FOOT
THREE QUARTERS INCH = ONE FOOT
ONE HALF INCH = ONE FOOT
THREE EIGHTHS INCH = ONE FOOT
ONE QUARTER INCH = ONE FOOT
ONE EIGHTH INCH = ONE FOOT

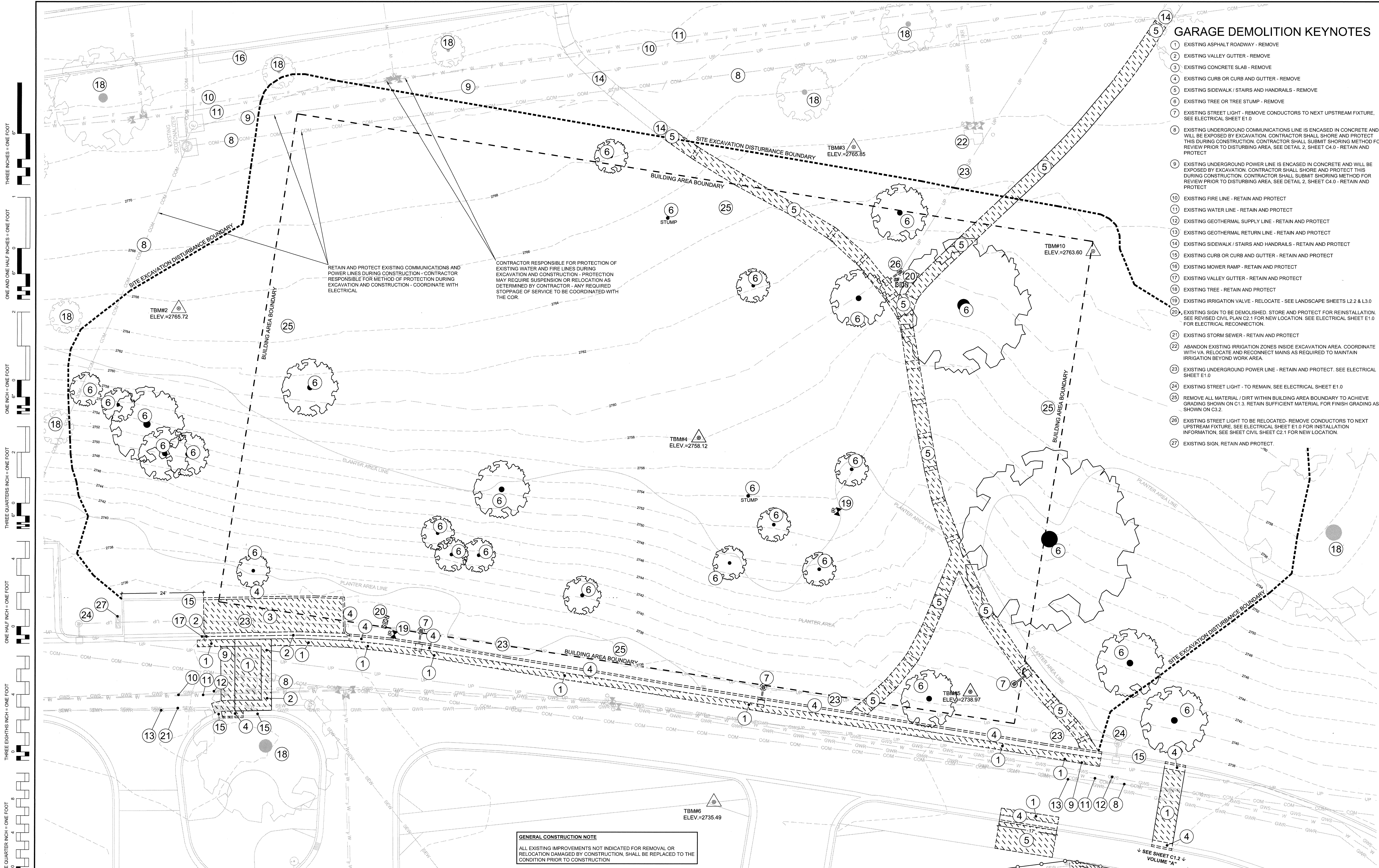


LINE TYPE LEGEND	
W	EXISTING POTABLE WATER LINE
SAN	SANITARY SEWER LINE
F	FIRE WATER LINE
COM	SIGNAL CONDUIT
UP	UNDERGROUND POWER LINE
GWS	GEO SUPPLY WATER LINE
GWR	GEO RETURN WATER LINE
SEW	STORM SEWER LINE
IRR	EXISTING IRRIGATION LINE

PRE-CONSTRUCTION SURVEYING REPORT NOTE
SEE SPECIFICATION SECTION 31 20 00, EARTHWORK, FOR REQUIREMENTS FOR AN IDAHO LICENSED PROFESSIONAL TO PREPARE A SURVEY REPORT OF EXISTING CONTROL AND CONDITIONS PRIOR TO BEGINNING ANY EARTHWORK.

SITE TOPOGRAPHY AND EXISTING UTILITIES - BUILDING 88
TRUE NORTH
PLAN NORTH

<div>B & A Engineers, Inc. Consulting Engineers, Surveyors & Planners 5505 West Franklin Road Boise, ID 83705 Voice: 208.343.3381 Fax: 208.342.5792 Web: http://www.baengineers.com</div> <div></div>	ZGA ARCHITECTS & PLANNERS, CHARTERED 408 E. Parkcenter Blvd., Suite 205 Boise, Idaho 83706 t: (208) 345.8872 f: (208) 343.7162 www.zga.com	<div>CAD FILE NAME: 531-322_C0.2_A.dwg</div> <div>XREF FILE NAME: xVAbord.dwg</div>	<div>DRAWING TITLE SITE TOPOGRAPHY FOR BUILDING 88 SITE</div> <div>APPROVED: CHIEF OF FACILITY MANAGEMENT SERVICE</div> <div>APPROVED: MEDICAL CENTER DIRECTOR</div>	<div>PROJECT TITLE VAMC PARKING GARAGE VOLUME A</div> <div>BUILDING NUMBER 88</div> <div>CHECKED JDC</div> <div>DRAWN CAA</div> <div>LOCATION BOISE, IDAHO</div>	<div>DATE 05/13/2016</div> <div>PROJECT NO. 531-322</div> <div>DRAWING NO. C0.2</div> <div>DWG 5 OF 126</div>	<div>FOR CONSTRUCTION</div> <div> DEPARTMENT OF VETERANS AFFAIRS</div>
---	---	---	---	--	---	---



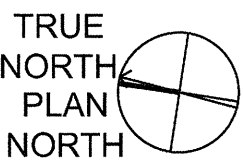
GARAGE DEMOLITION KEYNOTES

- 1 EXISTING ASPHALT ROADWAY - REMOVE
- 2 EXISTING VALLEY GUTTER - REMOVE
- 3 EXISTING CONCRETE SLAB - REMOVE
- 4 EXISTING CURB OR CURB AND GUTTER - REMOVE
- 5 EXISTING SIDEWALK / STAIRS AND HANDRAILS - REMOVE
- 6 EXISTING TREE OR TREE STUMP - REMOVE
- 7 EXISTING STREET LIGHT - REMOVE CONDUCTORS TO NEXT UPSTREAM FIXTURE. SEE ELECTRICAL SHEET E1.0
- 8 EXISTING UNDERGROUND COMMUNICATIONS LINE IS ENCASED IN CONCRETE AND WILL BE EXPOSED BY EXCAVATION. CONTRACTOR SHALL SHORE AND PROTECT THIS DURING CONSTRUCTION. CONTRACTOR SHALL SUBMIT SHORING METHOD FOR REVIEW PRIOR TO DISTURBING AREA. SEE DETAIL 2, SHEET C4.0 - RETAIN AND PROTECT
- 9 EXISTING UNDERGROUND POWER LINE IS ENCASED IN CONCRETE AND WILL BE EXPOSED BY EXCAVATION. CONTRACTOR SHALL SHORE AND PROTECT THIS DURING CONSTRUCTION. CONTRACTOR SHALL SUBMIT SHORING METHOD FOR REVIEW PRIOR TO DISTURBING AREA. SEE DETAIL 2, SHEET C4.0 - RETAIN AND PROTECT
- 10 EXISTING FIRE LINE - RETAIN AND PROTECT
- 11 EXISTING WATER LINE - RETAIN AND PROTECT
- 12 EXISTING GEOTHERMAL SUPPLY LINE - RETAIN AND PROTECT
- 13 EXISTING GEOTHERMAL RETURN LINE - RETAIN AND PROTECT
- 14 EXISTING SIDEWALK / STAIRS AND HANDRAILS - RETAIN AND PROTECT
- 15 EXISTING CURB OR CURB AND GUTTER - RETAIN AND PROTECT
- 16 EXISTING MOVER RAMP - RETAIN AND PROTECT
- 17 EXISTING VALLEY GUTTER - RETAIN AND PROTECT
- 18 EXISTING TREE - RETAIN AND PROTECT
- 19 EXISTING IRRIGATION VALVE - RELOCATE - SEE LANDSCAPE SHEETS L2.2 & L3.0
- 20 EXISTING SIGN TO BE DEMOLISHED. STORE AND PROTECT FOR REINSTALLATION. SEE REVISED CIVIL PLAN C2.1 FOR NEW LOCATION. SEE ELECTRICAL SHEET E1.0 FOR ELECTRICAL RECONNECTION.
- 21 EXISTING STORM SEWER - RETAIN AND PROTECT
- 22 ABANDON EXISTING IRRIGATION ZONES INSIDE EXCAVATION AREA. COORDINATE WITH VA. RELOCATE AND RECONNECT MAINS AS REQUIRED TO MAINTAIN IRRIGATION BEYOND WORK AREA.
- 23 EXISTING UNDERGROUND POWER LINE - RETAIN AND PROTECT. SEE ELECTRICAL SHEET E1.0
- 24 EXISTING STREET LIGHT - TO REMAIN. SEE ELECTRICAL SHEET E1.0
- 25 REMOVE ALL MATERIAL / DIRT WITHIN BUILDING AREA BOUNDARY TO ACHIEVE GRADING SHOWN ON C1.3. RETAIN SUFFICIENT MATERIAL FOR FINISH GRADING AS SHOWN ON C3.2.
- 26 EXISTING STREET LIGHT TO BE RELOCATED- REMOVE CONDUCTORS TO NEXT UPSTREAM FIXTURE. SEE ELECTRICAL SHEET E1.0 FOR INSTALLATION INFORMATION. SEE SHEET CIVIL SHEET C2.1 FOR NEW LOCATION.
- 27 EXISTING SIGN, RETAIN AND PROTECT.

GENERAL CONSTRUCTION NOTE
ALL EXISTING IMPROVEMENTS NOT INDICATED FOR REMOVAL OR RELOCATION DAMAGED BY CONSTRUCTION, SHALL BE REPLACED TO THE CONDITION PRIOR TO CONSTRUCTION

SITE DEMOLITION - PARKING GARAGE

1"=10'-0"




REVISIONS	DATE



B & A Engineers, Inc.
Consulting Engineers, Surveyors & Planners
5505 West Franklin Road Boise, ID 83705
Voice: 208.343.3381 Fax: 208.342.5792
Web: http://www.baengineers.com



ZGA ARCHITECTS & PLANNERS, CHARTERED
408 E. Parkcenter Blvd., Suite 205 | Boise, Idaho 83706 | t: (208) 345.8872 | f: (208) 343.7162 | www.zga.com



CAD FILE NAME:
531-322_C1.1_A.dwg
XREF FILE NAME:
xVAbord.dwg

DRAWING TITLE	
SITE DEMOLITION FOR PARKING GARAGE	
APPROVED: CHIEF OF FACILITY MANAGEMENT SERVICE	
APPROVED: MEDICAL CENTER DIRECTOR	

PROJECT TITLE	
VAMC PARKING GARAGE VOLUME A	
BUILDING NUMBER 125	CHECKED JDC
LOCATION BOISE, IDAHO	DRAWN CAA

DATE	05/13/2016
PROJECT NO.	531-322
DRAWING NO.	C1.1
DWG	6 OF 126

FOR CONSTRUCTION



DEPARTMENT OF VETERANS AFFAIRS

THREE INCHES = ONE FOOT
ONE AND ONE HALF INCHES = ONE FOOT
ONE INCH = ONE FOOT
THREE QUARTERS INCH = ONE FOOT
ONE HALF INCH = ONE FOOT
THREE EIGHTHS INCH = ONE FOOT
ONE QUARTER INCH = ONE FOOT
ONE EIGHTH INCH = ONE FOOT

BUILDING 88 DEMOLITION KEYNOTES

- 1 EXISTING SIDEWALK - REMOVE IN BASE BID
- 2 EXISTING TREE - REMOVE IN BASE BID
- 3 EXISTING SEEPAGE BED - REMOVE IN BASE BID - SEE SEEPAGE BED DEMO NOTE THIS PAGE
- 4 EXISTING SEDIMENT TANK - REMOVE IN BASE BID
- 5 EXISTING CONCRETE PAD AND GAZEBO - REMOVE IN BASE BID
- 6 EXISTING SIDEWALK - RETAIN AND PROTECT
- 7 EXISTING STORM SEWER PIPE - REMOVE IN BASE BID - SEE NOTE ON PLAN BELOW
- 8 EXISTING STORM SEWER PIPE - RETAIN AND PROTECT
- 9 ELECTRICAL BOX - REMOVE ELECTRICAL PANEL 88. REMOVE CONDUCTORS AND RACEWAY BACK TO PANEL. NLC (142-88). REMOVE IN BASE BID
- 10 EXISTING FENCE - REMOVE IN BASE BID
- 11 EXISTING SIGN - TO BE REMOVED IN BASE BID AND DELIVERED TO COR
- 12 EXISTING METAL RAILING AROUND PEDESTRIAN RAMP - REMOVE, PATCH COLUMN AND ALL ATTACHMENT POINTS - IF ALTERNATE 3 SELECTED
- 13 EXISTING PRESSURE IRRIGATION - REMOVE FOR REPLACEMENT IN BASE BID. SEE LANDSCAPE VOLUME B SHEETS L2.2 & L3.0
- 14 EXISTING MOW STRIP - RETAIN AND PROTECT
- 15 EXISTING TREE - RETAIN AND PROTECT
- 16 EXISTING STORM SEWER MANHOLE - RETAIN AND PROTECT
- 17 SNAKE / CLEAN EXISTING DRAIN LINE
- 18 EXISTING CURB OR CURB AND GUTTER - REMOVE IN BASE BID. SEE SHEET C1.1
- 19 REMOVE EXISTING SIDEWALK IF ALTERNATE 3 SELECTED, OTHERWISE RETAIN AND PROTECT
- 20 EXISTING MOW STRIP - REMOVE ONLY IF ALTERNATE 1 SELECTED, OTHERWISE RETAIN AND PROTECT

GENERAL PLANT MATERIAL DEMO NOTE:

DEMO OTHER PLANT MATERIALS - SEE LANDSCAPE VOLUME B SHEET L2.1

SEEPAGE BED DEMO NOTE:

EXCAVATE AND REMOVE FROM THE SITE THE EXISTING SEEPAGE BED. ITS MEASUREMENTS ARE EXPECTED TO BE 8 FEET WIDE BY 8 FEET LONG AND 8 FEET DEEP. THE BOTTOM OF THE BED IS APPROXIMATELY 9.5 FEET BELOW EXISTING GROUND WITH A 10 FOOT BY 10 FOOT BY 6 INCH CONCRETE CAP ON TOP OF THE BED. PRIOR TO REMOVING THE EXCAVATED MATERIAL FROM THE SITE, THE MATERIAL MAY NEED TO BE TEMPORARILY STOCKPILED IF THE MATERIAL IS TOO WET FOR REMOVAL FROM THE SITE AND WOULD RESULT IN LEAKAGE DURING TRANSPORT FROM THE SITE.

GENERAL CONSTRUCTION NOTE

ALL EXISTING IMPROVEMENTS NOT INDICATED FOR REMOVAL OR RELOCATION DAMAGED BY CONSTRUCTION, SHALL BE REPLACED TO THE CONDITION PRIOR TO CONSTRUCTION

SITE DEMOLITION - BUILDING 88

1"=10'-0"

TRUE
NORTH
PLAN
NORTH



B & A Engineers, Inc.
Consulting Engineers, Surveyors & Planners
5505 West Franklin Road Boise, ID 83705
Voice: 208.343.3381 Fax: 208.342.5792
Web: <http://www.baengineers.com>



ZGA ARCHITECTS & PLANNERS, CHARTERED

408 E. Parkcenter Blvd., Suite 205 | Boise, Idaho 83706 | t: (208) 345.8872 | f: (208) 343.7162 | www.zga.com



CAD FILE NAME:
531-322_C1.2_A.dwg
XREF FILE NAME:
xVAbord.dwg

DRAWING TITLE
**SITE DEMOLITION
FOR BUILDING 88 SITE**

APPROVED: CHIEF OF FACILITY MANAGEMENT SERVICE

APPROVED: MEDICAL CENTER DIRECTOR

PROJECT TITLE
**VAMC PARKING GARAGE
VOLUME A**

BUILDING NUMBER
88

CHECKED
JDC

DRAWN
CAA

LOCATION
BOISE, IDAHO

DATE
05/13/2016

PROJECT NO.
531-322

DRAWING NO.
C1.2

DWG 7 OF 126

FOR CONSTRUCTION



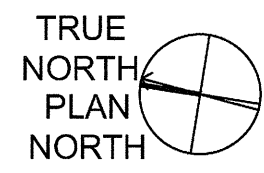
DEPARTMENT OF VETERANS AFFAIRS

THREE INCHES = ONE FOOT
ONE AND ONE HALF INCHES = ONE FOOT
ONE INCH = ONE FOOT
THREE QUARTERS INCH = ONE FOOT
ONE HALF INCH = ONE FOOT
THREE EIGHTHS INCH = ONE FOOT
ONE QUARTER INCH = ONE FOOT
ONE EIGHTH INCH = ONE FOOT



NOTE
1. BUILDING AND IMPROVEMENTS ARE SHOWN FOR INFORMATION PURPOSES ONLY. SEE SHEETS C2.1, C3.1 AND C3.2 FOR INFORMATION ON GRADING AND PLACEMENT OF IMPROVEMENTS.
2. OVER EXCAVATION AREA - REMOVE SOIL FOR CONSTRUCTION

SOIL NAILING CUT EXTENT MAP - PARKING GARAGE




REVISIONS	DATE



B & A Engineers, Inc.
Consulting Engineers, Surveyors & Planners
5505 West Franklin Road Boise, ID 83705
Voice: 208.343.3381 Fax: 208.342.5792
Web: <http://www.baengineers.com>



ZGA ARCHITECTS & PLANNERS, CHARTERED
408 E. Parkcenter Blvd., Suite 205 | Boise, Idaho 83706 | t: (208) 345.8872 | f: (208) 343.7162 | www.zga.com



CAD FILE NAME:
531-322_C1.3_A.dwg
XREF FILE NAME:
xVAbord.dwg

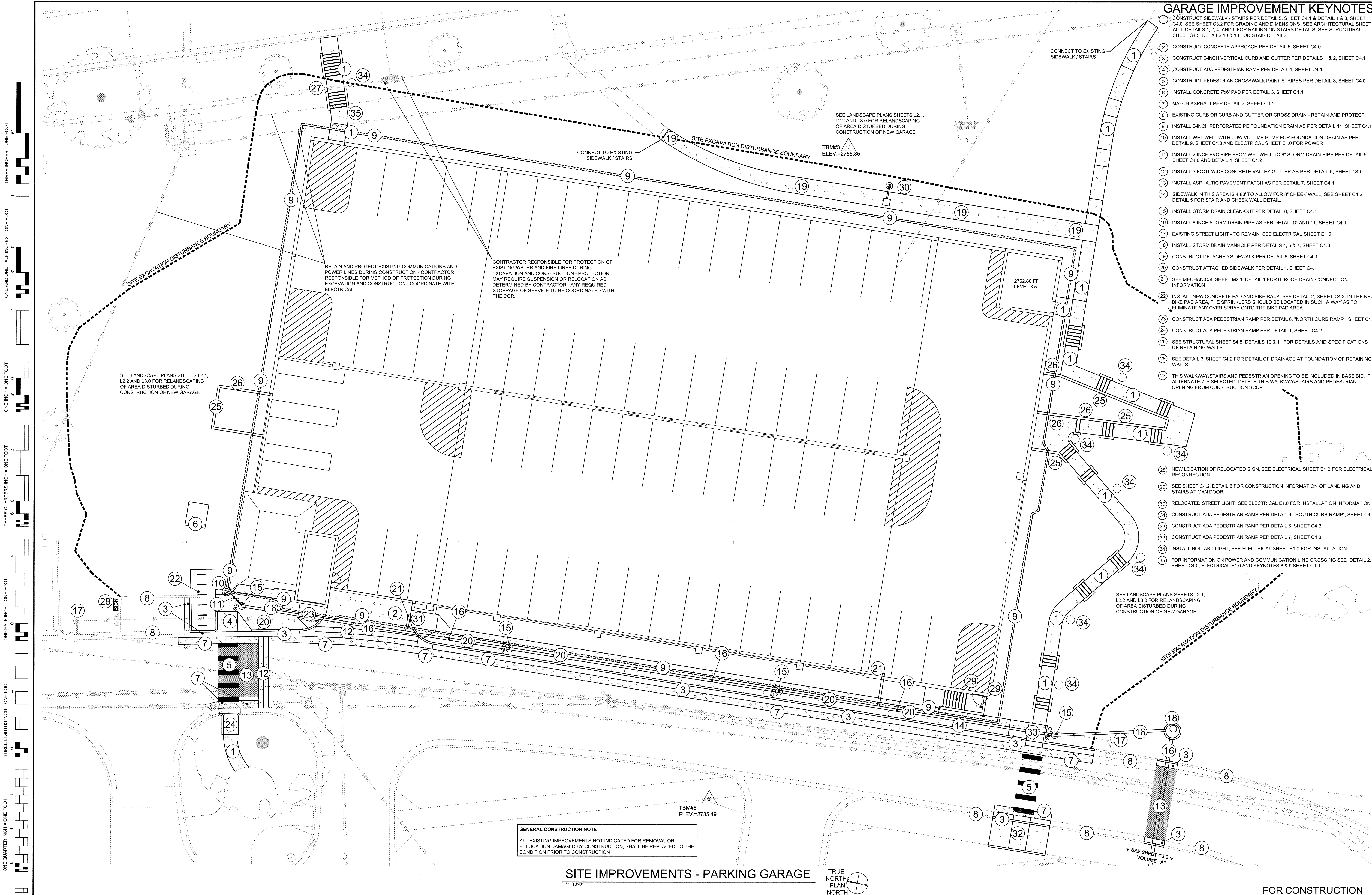
DRAWING TITLE SITE TOPOGRAPHY AND SOIL NAILING CUT EXTENT MAP FOR PARKING GARAGE	
APPROVED: CHIEF OF FACILITY MANAGEMENT SERVICE	
APPROVED: MEDICAL CENTER DIRECTOR	

PROJECT TITLE VAMC PARKING GARAGE VOLUME A	
BUILDING NUMBER 125	CHECKED JDC
LOCATION BOISE, IDAHO	DRAWN CAA

DATE 05/13/2016
PROJECT NO. 531-322
DRAWING NO. C1.3
DWG 8 OF 126

FOR CONSTRUCTION


DEPARTMENT OF VETERANS AFFAIRS



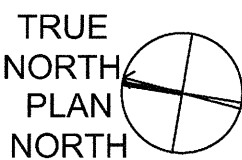
GARAGE IMPROVEMENT KEYNOTES

- 1. CONSTRUCT SIDEWALK / STAIRS PER DETAIL 5, SHEET C4.1 & DETAIL 1 & 3, SHEET C4.0. SEE SHEET C3.2 FOR GRADING AND DIMENSIONS. SEE ARCHITECTURAL SHEET A0.1, DETAILS 1, 2, 4, AND 5 FOR RAILING ON STAIRS DETAILS. SEE STRUCTURAL SHEET S4.5, DETAILS 10 & 13 FOR STAIR DETAILS
- 2. CONSTRUCT CONCRETE APPROACH PER DETAIL 5, SHEET C4.0
- 3. CONSTRUCT 6-INCH VERTICAL CURB AND GUTTER PER DETAILS 1 & 2, SHEET C4.1
- 4. CONSTRUCT ADA PEDESTRIAN RAMP PER DETAIL 4, SHEET C4.1
- 5. CONSTRUCT PEDESTRIAN CROSSWALK PAINT STRIPES PER DETAIL 8, SHEET C4.0
- 6. INSTALL CONCRETE 7'x6' PAD PER DETAIL 3, SHEET C4.1
- 7. MATCH ASPHALT PER DETAIL 7, SHEET C4.1
- 8. EXISTING CURB OR CURB AND GUTTER OR CROSS DRAIN - RETAIN AND PROTECT
- 9. INSTALL 6-INCH PERFORATED PE FOUNDATION DRAIN AS PER DETAIL 11, SHEET C4.1
- 10. INSTALL WET WELL WITH LOW VOLUME PUMP FOR FOUNDATION DRAIN AS PER DETAIL 9, SHEET C4.0 AND ELECTRICAL SHEET E1.0 FOR POWER
- 11. INSTALL 2-INCH PVC PIPE FROM WET WELL TO 8" STORM DRAIN PIPE PER DETAIL 9, SHEET C4.0 AND DETAIL 4, SHEET C4.2
- 12. INSTALL 3-FOOT WIDE CONCRETE VALLEY GUTTER AS PER DETAIL 5, SHEET C4.0
- 13. INSTALL ASPHALTIC PAVEMENT PATCH AS PER DETAIL 7, SHEET C4.1
- 14. SIDEWALK IN THIS AREA IS 4.83' TO ALLOW FOR 8" CHEEK WALL. SEE SHEET C4.2, DETAIL 5 FOR STAIR AND CHEEK WALL DETAIL.
- 15. INSTALL STORM DRAIN CLEAN-OUT PER DETAIL 8, SHEET C4.1
- 16. INSTALL 8-INCH STORM DRAIN PIPE AS PER DETAIL 10 AND 11, SHEET C4.1
- 17. EXISTING STREET LIGHT - TO REMAIN. SEE ELECTRICAL SHEET E1.0
- 18. INSTALL STORM DRAIN MANHOLE PER DETAILS 4, 8 & 7, SHEET C4.0
- 19. CONSTRUCT DETACHED SIDEWALK PER DETAIL 5, SHEET C4.1
- 20. CONSTRUCT ATTACHED SIDEWALK PER DETAIL 1, SHEET C4.1
- 21. SEE MECHANICAL SHEET M2.1, DETAIL 1 FOR 6" ROOF DRAIN CONNECTION INFORMATION
- 22. INSTALL NEW CONCRETE PAD AND BIKE RACK. SEE DETAIL 2, SHEET C4.2. IN THE NEW BIKE PAD AREA, THE SPRINKLERS SHOULD BE LOCATED IN SUCH A WAY AS TO ELIMINATE ANY OVER SPRAY ONTO THE BIKE PAD AREA
- 23. CONSTRUCT ADA PEDESTRIAN RAMP PER DETAIL 6, "NORTH CURB RAMP", SHEET C4.1
- 24. CONSTRUCT ADA PEDESTRIAN RAMP PER DETAIL 1, SHEET C4.2
- 25. SEE STRUCTURAL SHEET S4.5, DETAILS 10 & 11 FOR DETAILS AND SPECIFICATIONS OF RETAINING WALLS
- 26. SEE DETAIL 3, SHEET C4.2 FOR DETAIL OF DRAINAGE AT FOUNDATION OF RETAINING WALLS
- 27. THIS WALKWAY/STAIRS AND PEDESTRIAN OPENING TO BE INCLUDED IN BASE BID. IF ALTERNATE 2 IS SELECTED, DELETE THIS WALKWAY/STAIRS AND PEDESTRIAN OPENING FROM CONSTRUCTION SCOPE
- 28. NEW LOCATION OF RELOCATED SIGN. SEE ELECTRICAL SHEET E1.0 FOR ELECTRICAL RECONNECTION
- 29. SEE SHEET C4.2, DETAIL 5 FOR CONSTRUCTION INFORMATION OF LANDING AND STAIRS AT MAIN DOOR.
- 30. RELOCATED STREET LIGHT. SEE ELECTRICAL E1.0 FOR INSTALLATION INFORMATION
- 31. CONSTRUCT ADA PEDESTRIAN RAMP PER DETAIL 6, "SOUTH CURB RAMP", SHEET C4.1
- 32. CONSTRUCT ADA PEDESTRIAN RAMP PER DETAIL 6, SHEET C4.3
- 33. CONSTRUCT ADA PEDESTRIAN RAMP PER DETAIL 7, SHEET C4.3
- 34. INSTALL BOLLARD LIGHT. SEE ELECTRICAL SHEET E1.0 FOR INSTALLATION
- 35. FOR INFORMATION ON POWER AND COMMUNICATION LINE CROSSING SEE DETAIL 2, SHEET C4.0, ELECTRICAL E1.0 AND KEYNOTES 8 & 9 SHEET C1.1

THREE INCHES = ONE FOOT
ONE AND ONE HALF INCHES = ONE FOOT
ONE INCH = ONE FOOT
THREE QUARTERS INCH = ONE FOOT
ONE HALF INCH = ONE FOOT
THREE EIGHTHS INCH = ONE FOOT
ONE QUARTER INCH = ONE FOOT
ONE EIGHTH INCH = ONE FOOT

SITE IMPROVEMENTS - PARKING GARAGE

1"=10'-0"



REVISIONS	DATE

B & A Engineers, Inc.
Consulting Engineers, Surveyors & Planners
5505 West Franklin Road Boise, ID 83705
Voice: 208.343.3381 Fax: 208.342.5792
Web: http://www.baengineers.com

ZGA ARCHITECTS & PLANNERS, CHARTERED

408 E. Parkcenter Blvd., Suite 205 | Boise, Idaho 83706 | t: (208) 345.8872 | f: (208) 343.7162 | www.zga.com

CAD FILE NAME:
531-322_C2.1_A.dwg

XREF FILE NAME:
xVAbord.dwg

DRAWING TITLE
SITE IMPROVEMENTS FOR PARKING GARAGE

APPROVED: CHIEF OF FACILITY MANAGEMENT SERVICE

APPROVED: MEDICAL CENTER DIRECTOR

PROJECT TITLE
VAMC PARKING GARAGE VOLUME A

BUILDING NUMBER
125

CHECKED: JDC
DRAWN: CAA

LOCATION
BOISE, IDAHO

DATE
05/13/2016

PROJECT NO.
531-322

DRAWING NO.
C2.1

DWG 9 of 126

FOR CONSTRUCTION

DEPARTMENT OF VETERANS AFFAIRS