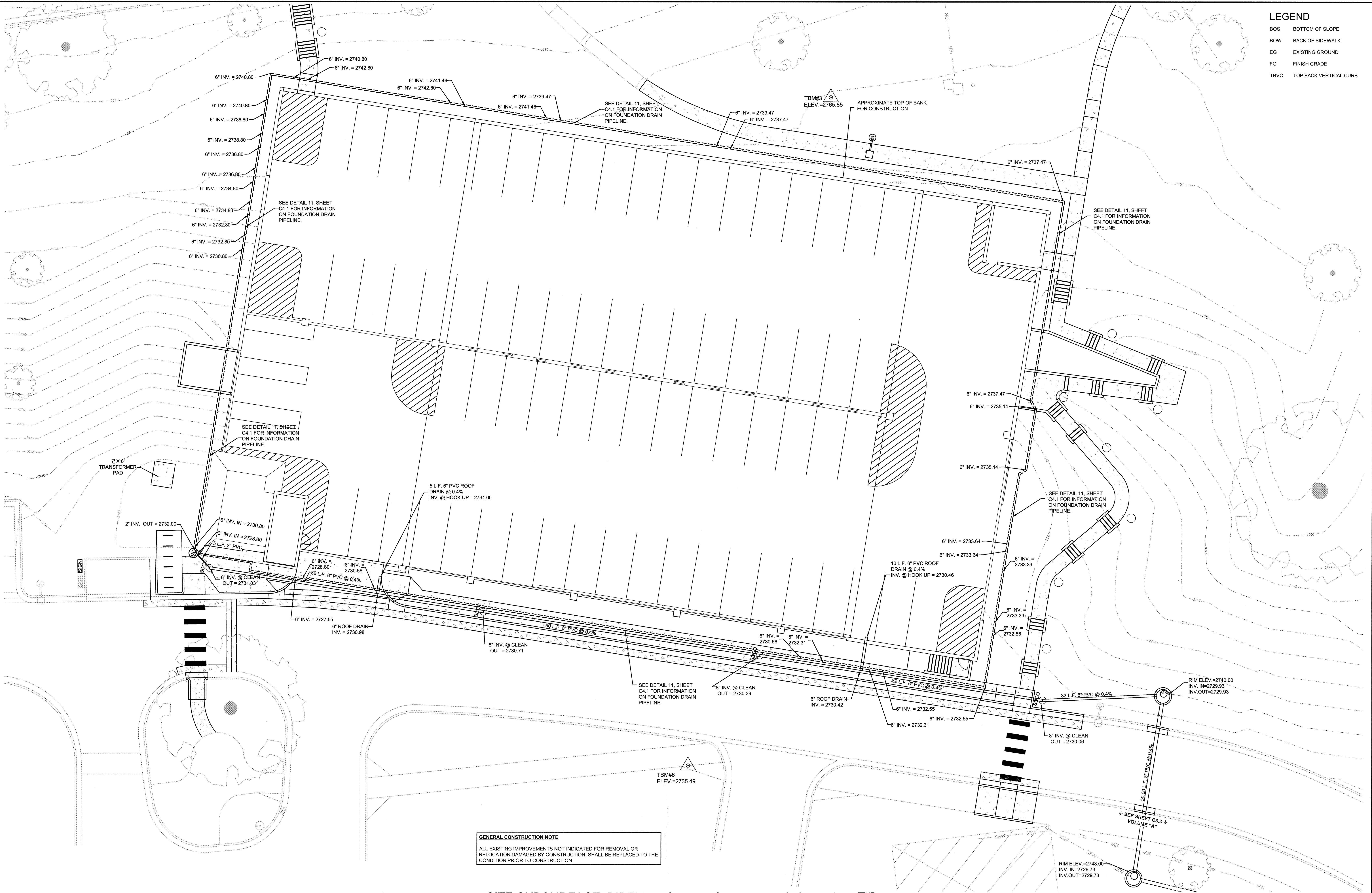


LEGEND

BOS BOTTOM OF SLOPE
BOW BACK OF SIDEWALK
EG EXISTING GROUND
FG FINISH GRADE
TBVC TOP BACK VERTICAL CURB

THREE INCHES = ONE FOOT
ONE AND ONE HALF INCHES = ONE FOOT
ONE INCH = ONE FOOT
THREE QUARTERS INCH = ONE FOOT
ONE HALF INCH = ONE FOOT
THREE EIGHTHS INCH = ONE FOOT
ONE QUARTER INCH = ONE FOOT
ONE EIGHTH INCH = ONE FOOT



GENERAL CONSTRUCTION NOTE
ALL EXISTING IMPROVEMENTS NOT INDICATED FOR REMOVAL OR RELOCATION DAMAGED BY CONSTRUCTION, SHALL BE REPLACED TO THE CONDITION PRIOR TO CONSTRUCTION

SITE SUBSURFACE PIPELINE GRADING - PARKING GARAGE



| REVISIONS | DATE |
|-----------|------|
| | |
| | |
| | |

B & A Engineers, Inc.
Consulting Engineers, Surveyors & Planners
5505 West Franklin Road Boise, ID 83705
Voice: 208.343.3381 Fax: 208.342.5792
Web: <http://www.baengineers.com>

ZGA ARCHITECTS & PLANNERS, CHARTERED

408 E. Parkcenter Blvd., Suite 205 | Boise, Idaho 83706 | t: (208) 345.8872 | f: (208) 343.7162 | www.zga.com

| |
|--------------------------------------|
| CAD FILE NAME: 531-322_C3.1_A.dwg |
| XREF FILE NAME: xVAbord.dwg |

| |
|---|
| DRAWING TITLE SITE SUBSURFACE PIPELINE GRADING FOR PARKING GARAGE |
| APPROVED: CHIEF OF FACILITY MANAGEMENT SERVICE |
| APPROVED: MEDICAL CENTER DIRECTOR |

| |
|--|
| PROJECT TITLE VAMC PARKING GARAGE VOLUME A |
| BUILDING NUMBER 125 |
| CHECKED JDC |
| DRAWN CAA |
| LOCATION BOISE, IDAHO |

| |
|------------------------|
| DATE 05/13/2016 |
| PROJECT NO. 531-322 |
| DRAWING NO. C3.1 |
| DWG 10 OF 126 |

FOR CONSTRUCTION

DEPARTMENT OF VETERANS AFFAIRS

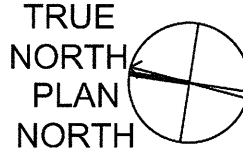
THREE INCHES = ONE FOOT
ONE AND ONE HALF INCHES = ONE FOOT
ONE INCH = ONE FOOT
THREE QUARTERS INCH = ONE FOOT
ONE HALF INCH = ONE FOOT
THREE EIGHTHS INCH = ONE FOOT
ONE QUARTER INCH = ONE FOOT
ONE EIGHTH INCH = ONE FOOT



- LEGEND**
- BOS BOTTOM OF SLOPE
 - BW BACK OF SIDEWALK
 - EG EXISTING GROUND
 - FG FINISH GRADE
 - TBVC TOP BACK VERTICAL CURB
 - SW SIDEWALK GRADE
 - TR AT STAIR TREAD
 - TW TOP OF WALL
 - FF FINISH FLOOR
 - BOC BACK OF CURB
 - LIP LIP OF GUTTER
 - BF BOTTOM OF FOOTING OF RETAINING WALL

GENERAL CONSTRUCTION NOTE
ALL EXISTING IMPROVEMENTS NOT INDICATED FOR REMOVAL OR RELOCATION DAMAGED BY CONSTRUCTION, SHALL BE REPLACED TO THE CONDITION PRIOR TO CONSTRUCTION

SITE FINISH GRADING - PARKING GARAGE



| REVISIONS | DATE |
|-----------|------|
| | |

B & A Engineers, Inc.
Consulting Engineers, Surveyors & Planners
5505 West Franklin Road Boise, ID 83705
Voice: 208.343.3381 Fax: 208.342.5792
Web: http://www.baengineers.com

ZGA ARCHITECTS & PLANNERS, CHARTERED
408 E. Parkcenter Blvd., Suite 205 | Boise, Idaho 83706 | t: (208) 345.8872 | f: (208) 343.7162 | www.zga.com

CAD FILE NAME:
531-322_C3.2_A.dwg
XREF FILE NAME:
xVAford.dwg

DRAWING TITLE
SITE FINISH GRADING FOR PARKING GARAGE
APPROVED: CHIEF OF FACILITY MANAGEMENT SERVICE
APPROVED: MEDICAL CENTER DIRECTOR

PROJECT TITLE
VAMC PARKING GARAGE VOLUME A
BUILDING NUMBER
125
LOCATION
BOISE, IDAHO

DATE
05/13/2016
PROJECT NO.
531-322
DRAWING NO.
C3.2
DWG 11 OF 126

FOR CONSTRUCTION

DEPARTMENT OF VETERANS AFFAIRS

ONE EIGHTH INCH = ONE FOOT
ONE QUARTER INCH = ONE FOOT
THREE EIGHTHS INCH = ONE FOOT
ONE HALF INCH = ONE FOOT
THREE QUARTERS INCH = ONE FOOT
ONE INCH = ONE FOOT
ONE AND ONE HALF INCHES = ONE FOOT
THREE INCHES = ONE FOOT

GARAGE DRAINAGE KEYNOTES

1. INSTALL 1,000 GALLON CONCRETE SEDIMENT TANK PER DETAILS 1, 2, 4 & 5, SHEET C4.3
2. CONSTRUCT SEEPAGE BED PER DETAILS 1, 2, 4 & 5, SHEET C4.3
3. INSTALL 10-INCH PVC PIPE FROM EXISTING STORM SEWER TO NEW SEDIMENT TANK AS PER DETAILS 1, 2, 4 & 5, SHEET C4.3
4. INSTALL 8-INCH PVC PIPE FROM PARKING GARAGE ROOF DRAINS TO SEDIMENT TANK AS PER DETAILS 1, 2, 4 & 5, SHEET C4.3
5. EXISTING TREE - RETAIN AND PROTECT
6. INSTALL STORM DRAIN MANHOLE PER DETAILS 4, 6 & 7, SHEET C4.0
7. INSTALL 12-INCH STORM DRAIN PIPE FROM SEDIMENT TANK TO DRAIN FIELD AS PER DETAILS 1, 2, 4 & 5, SHEET C4.3
8. INSTALL 12-INCH DRAINFIELD LATERALS AS PER DETAILS 1, 2, 4 & 5, SHEET C4.3
9. INSTALL GROUND WATER OBSERVATION WELL AS PER DETAIL 3, SHEET C4.3
10. SNAKE / CLEAN EXISTING DRAIN LINE

GENERAL CONSTRUCTION NOTE
ALL EXISTING IMPROVEMENTS NOT INDICATED FOR REMOVAL OR RELOCATION DAMAGED BY CONSTRUCTION, SHALL BE REPLACED TO THE CONDITION PRIOR TO CONSTRUCTION.

SUBSURFACE GRADING - BUILDING 88 SITE



| | | | | | | | | | | | | | |
|---|--|--|--|--|--|--|--|--|--|---|--|---|--|
| B & A Engineers, Inc. Consulting Engineers, Surveyors & Planners 5505 West Franklin Road Boise, ID 83705 Voice: 208.343.3381 Fax: 208.342.5792 Web: http://www.baengineers.com | | ZGA ARCHITECTS & PLANNERS, CHARTERED 408 E. Parkcenter Blvd., Suite 205 Boise, Idaho 83706 t: (208) 345.8872 f: (208) 343.7162 www.zga.com | | ZGA CAD FILE NAME: 531-322_C3.3_A.dwg XREF FILE NAME: xVAbord.dwg | | DRAWING TITLE SUBSURFACE DRAINAGE PIPELINE GRADING FOR BUILDING 88 SITE APPROVED: CHIEF OF FACILITY MANAGEMENT SERVICE APPROVED: MEDICAL CENTER DIRECTOR | | PROJECT TITLE VAMC PARKING GARAGE VOLUME A BUILDING NUMBER 88 & 125 LOCATION BOISE, IDAHO CHECKED: JDC DRAWN: CAA | | DATE 05/13/2016 PROJECT NO. 531-322 DRAWING NO. C3.3 DWG 12 OF 126 | | VAMC DEPARTMENT OF VETERANS AFFAIRS | |
| REVISIONS | | DATE | | | | | | | | | | | |

THREE INCHES = ONE FOOT
ONE AND ONE HALF INCHES = ONE FOOT
ONE INCH = ONE FOOT
ONE INCH = ONE FOOT
THREE QUARTERS INCH = ONE FOOT
ONE HALF INCH = ONE FOOT
ONE HALF INCH = ONE FOOT
ONE HALF INCH = ONE FOOT
THREE EIGHTHS INCH = ONE FOOT
ONE QUARTER INCH = ONE FOOT
ONE EIGHTH INCH = ONE FOOT

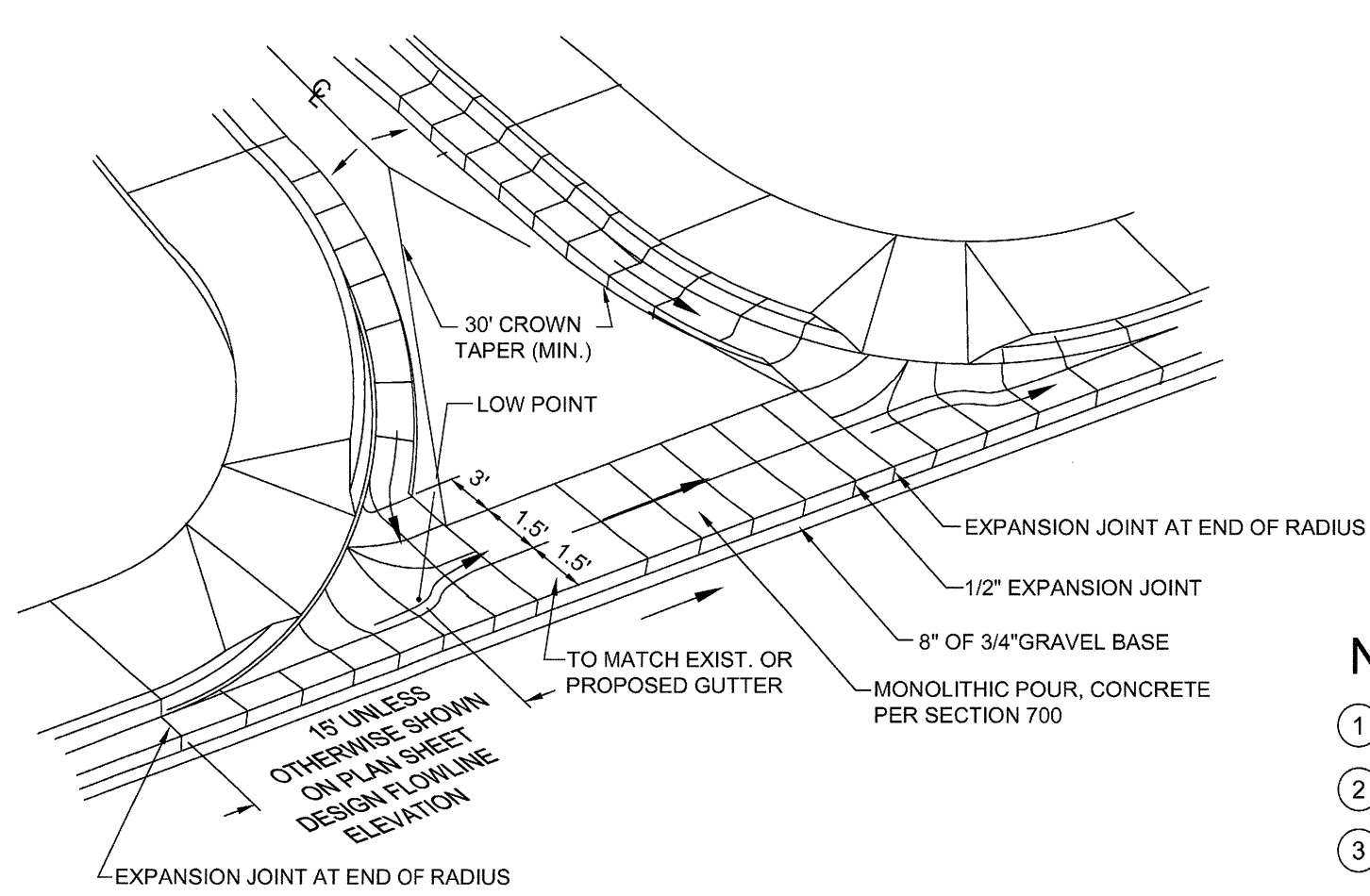
LEGEND

- (A) PREFORMED JOINT FILLER STRIP

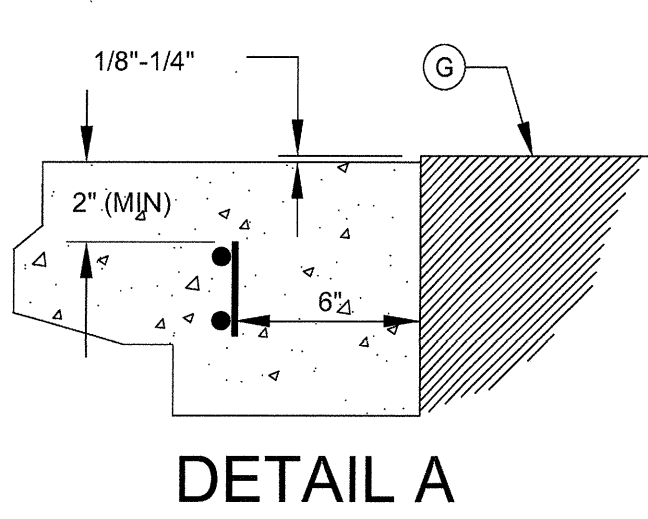
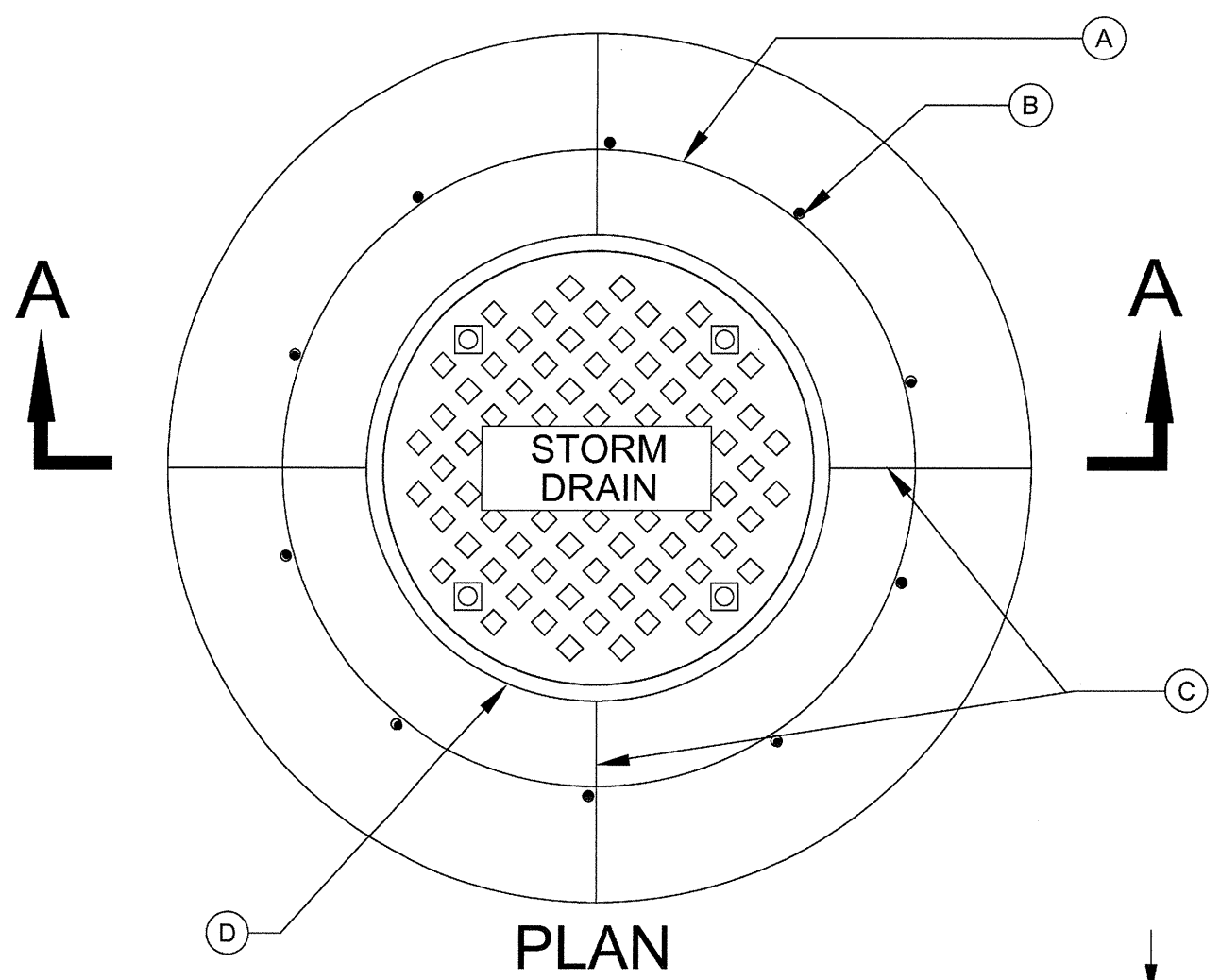
NOTES:

- (1) A CONSTRUCTION OR ISOLATION JOINT SHALL BE AT LEAST 2' FROM A JOINT.
- (2) PREFORMED JOINT FILLER STRIP SHALL BE INSTALLED IN ACCORDANCE WITH THE MANUFACTURERS REQUIREMENTS.

1 TYPICAL CONCRETE SIDEWALK JOINT AT BUILDING DETAIL
NOT TO SCALE



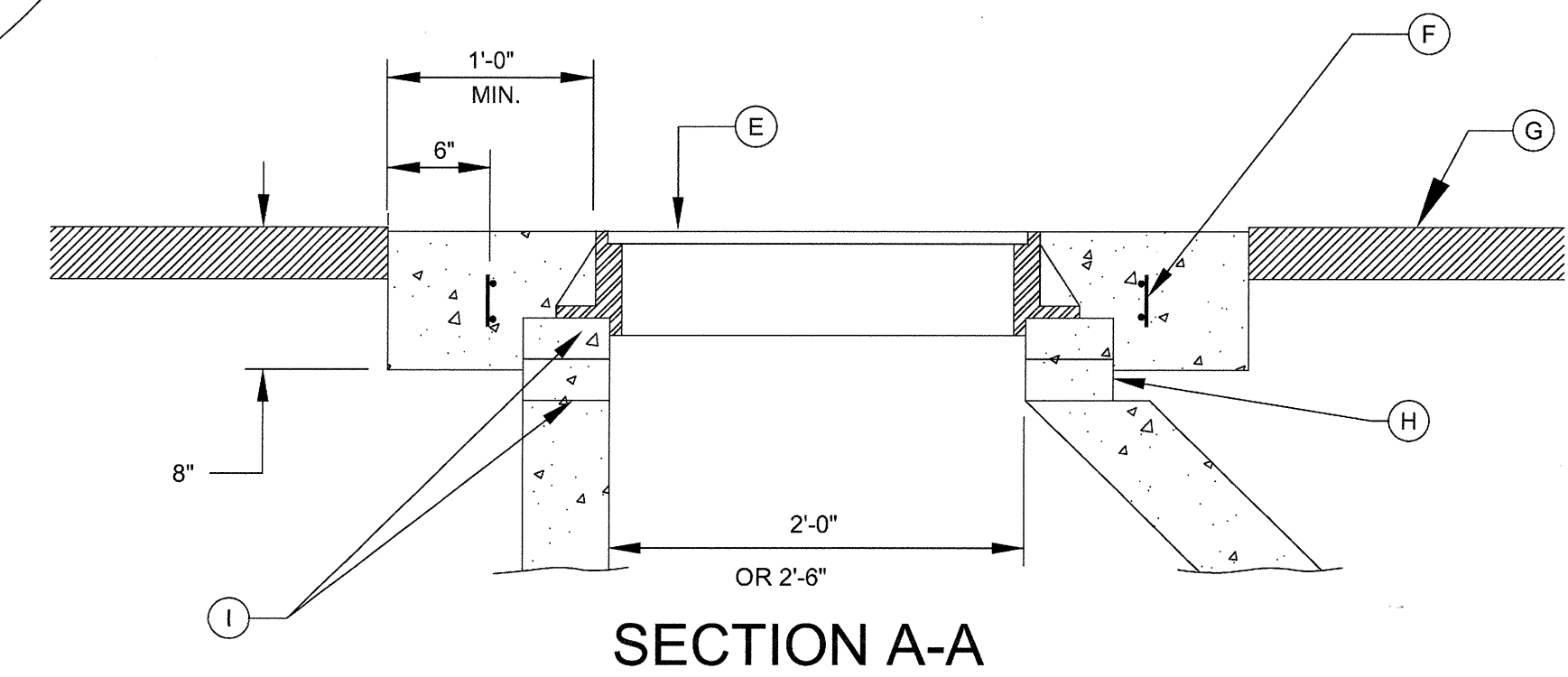
5 TYPICAL VALLEY GUTTER
NOT TO SCALE



6 MANHOLE COLLAR
NOT TO SCALE

LEGEND

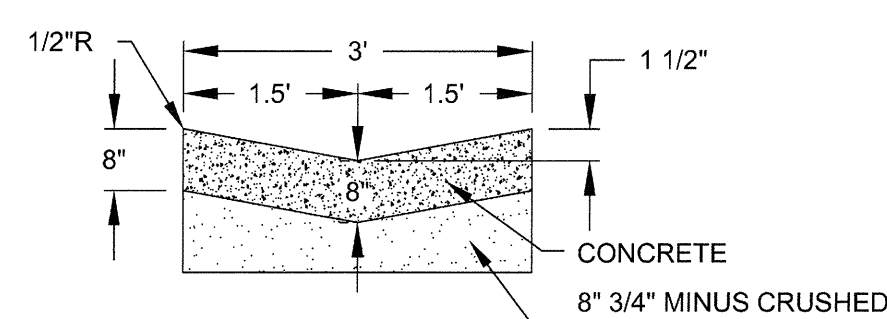
- (A) #4 REBAR (2 EACH) SEE SECTION A-A.
- (B) #4 REBAR AT 20" SPACING.
- (C) SCORES.
- (D) RIM.
- (E) CAST IRON FRAME AND COVER.
- (F) SEE "DETAIL A" FOR REBAR IN COLLAR.
- (G) FINISHED GRADE.
- (H) SEE DETAIL 4, THIS PAGE, FOR MAXIMUM HEIGHT.
- (I) GROUT BETWEEN RING AND COVER AND GRADE RINGS.



- NOTES:
- (A) TOP OF COLLAR TO BE FLUSH WITH MANHOLE COVER
- (B) FIBER-REINFORCED CONCRETE MAY BE USED IN LIEU OF REBAR WITH ENGINEER'S APPROVAL.

SECTION A-A

2 NORTHEAST EXTERIOR STAIRWAY - UTILITIES CROSSING DETAIL
NOT TO SCALE



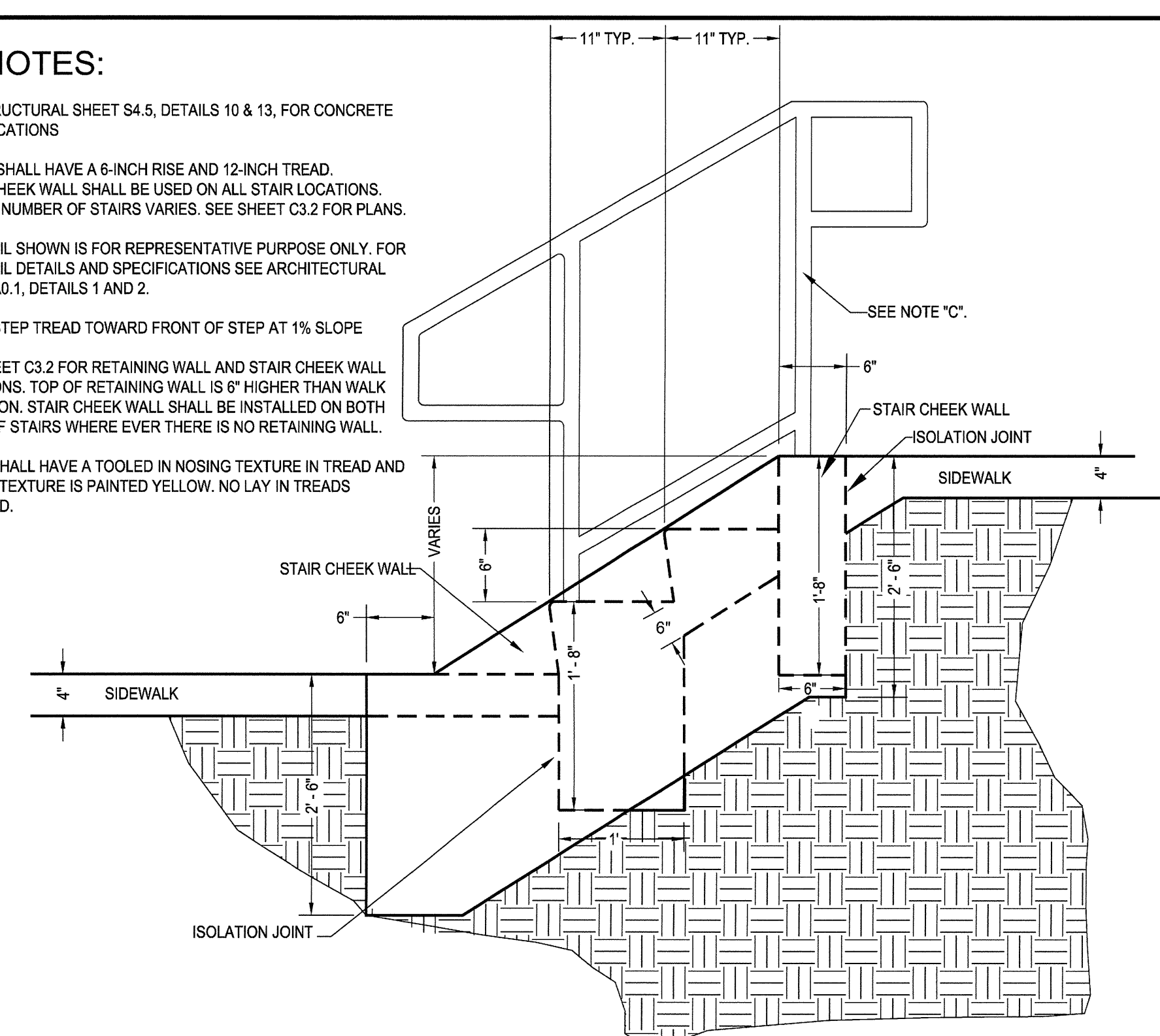
VALLEY GUTTER
TYPICAL SECTION

NOTES:

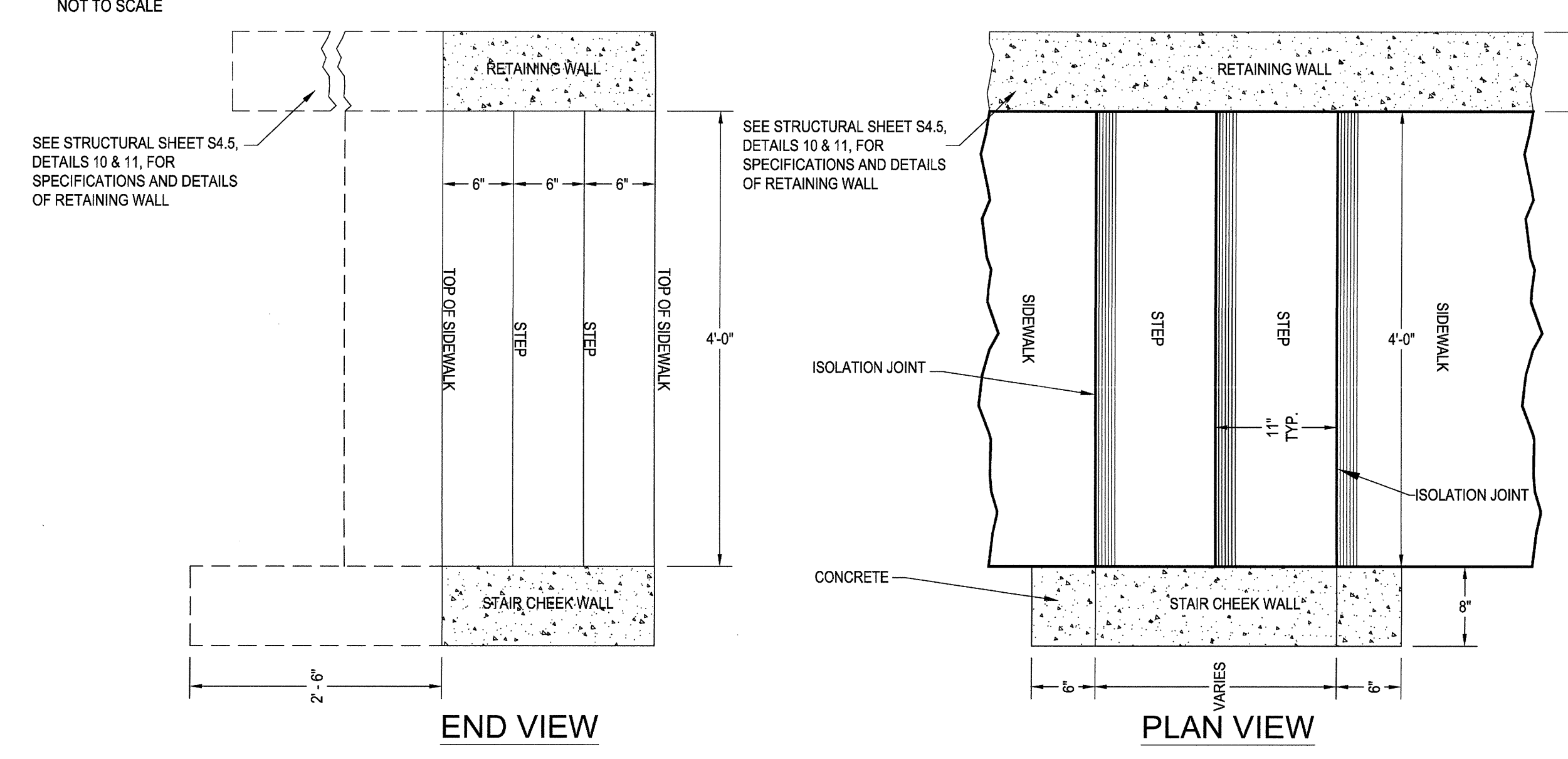
- (1) GRADE OF GUTTER MINIMUM 0.4%.
- (2) EXPANSION JOINT 1/2-INCH PREFORMED JOINT MATERIAL (AASHTO M 213.)
- (3) FILLET AND BASE SECTION THICKNESS SHALL MATCH THE VALLEY GUTTER, TYPICAL.

STAIR NOTES:

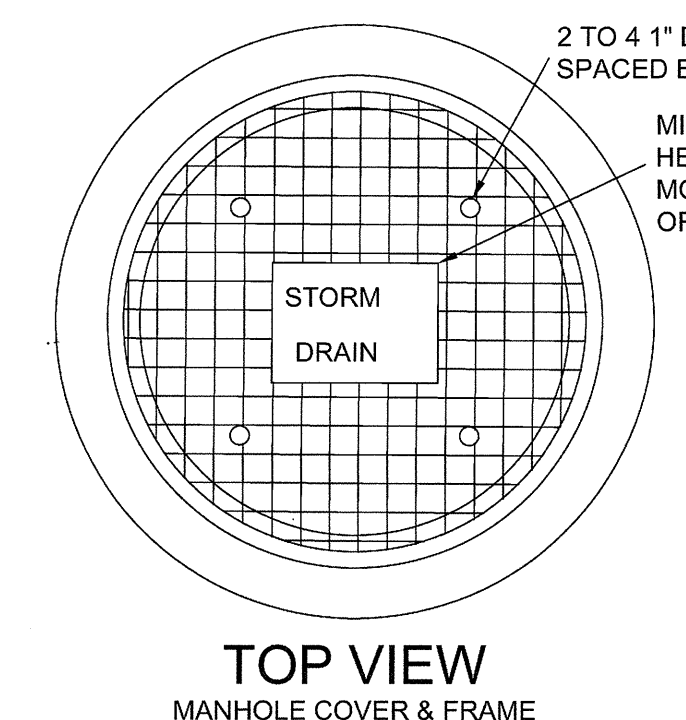
- (A) SEE STRUCTURAL SHEET S4.5, DETAILS 10 & 13, FOR CONCRETE SPECIFICATIONS
- (B) STAIRS SHALL HAVE A 6-INCH RISE AND 12-INCH TREAD. STAIR CHEEK WALL SHALL BE USED ON ALL STAIR LOCATIONS. ACTUAL NUMBER OF STAIRS VARIES. SEE SHEET C3.2 FOR PLANS.
- (C) HANDRAIL SHOWN IS FOR REPRESENTATIVE PURPOSE ONLY. FOR HANDRAIL DETAILS AND SPECIFICATIONS SEE ARCHITECTURAL SHEET A0.1, DETAILS 1 AND 2.
- (D) SLOPE STEP TREAD TOWARD FRONT OF STEP AT 1% SLOPE
- (E) SEE SHEET C3.2 FOR RETAINING WALL AND STAIR CHEEK WALL LOCATIONS. TOP OF RETAINING WALL IS 6" HIGHER THAN WALK ELEVATION. STAIR CHEEK WALL SHALL BE INSTALLED ON BOTH SIDES OF STAIRS WHERE EVER THERE IS NO RETAINING WALL.
- (F) STEPS SHALL HAVE A TOOLED IN NOSING TEXTURE IN TREAD AND NOSING TEXTURE IS PAINTED YELLOW. NO LAY IN TREADS ALLOWED.



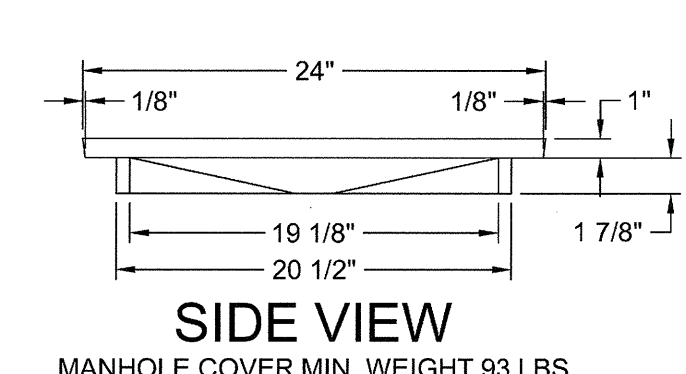
SECTION VIEW



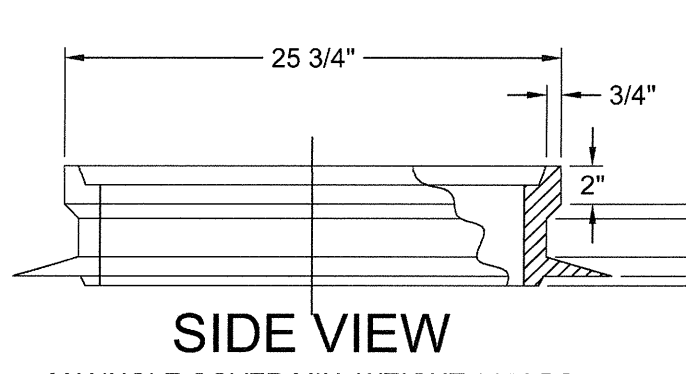
3 TYPICAL STAIR CONSTRUCTION DETAIL
NOT TO SCALE



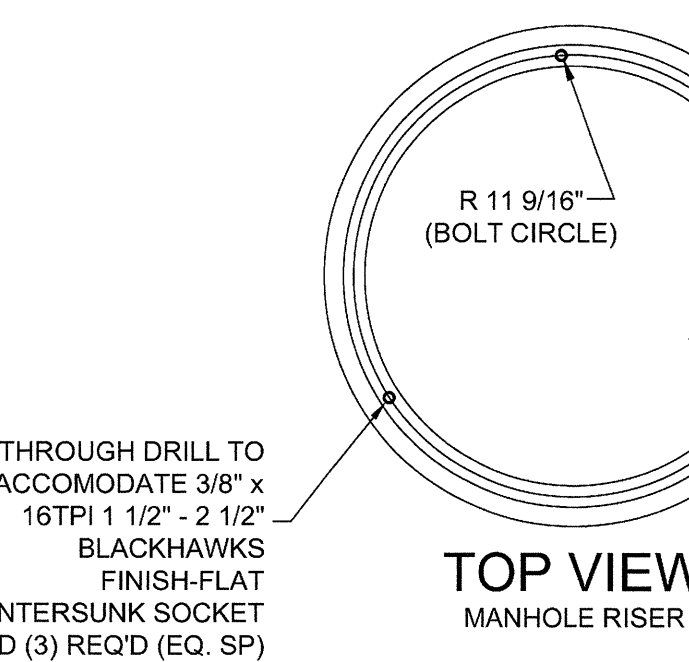
TOP VIEW
MANHOLE COVER & FRAME



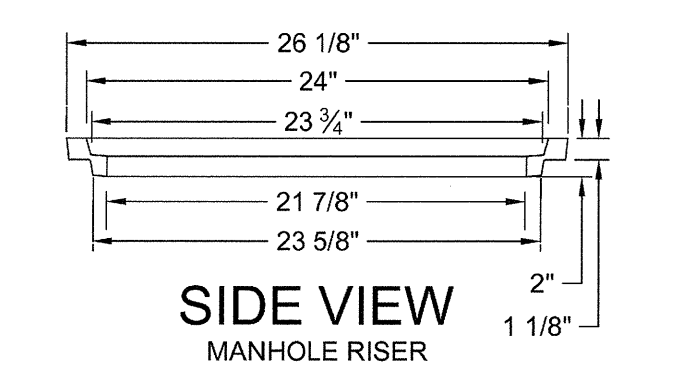
SIDE VIEW
MANHOLE COVER MIN. WEIGHT 93 LBS



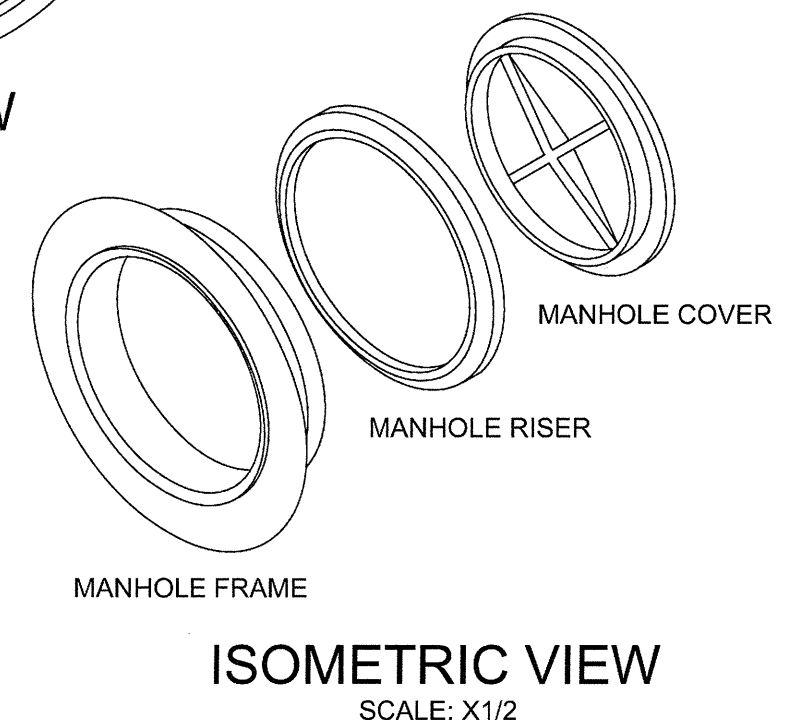
SIDE VIEW
MANHOLE COVER MIN. WEIGHT 147 LBS



TOP VIEW
MANHOLE RISER



SIDE VIEW
MANHOLE RISER

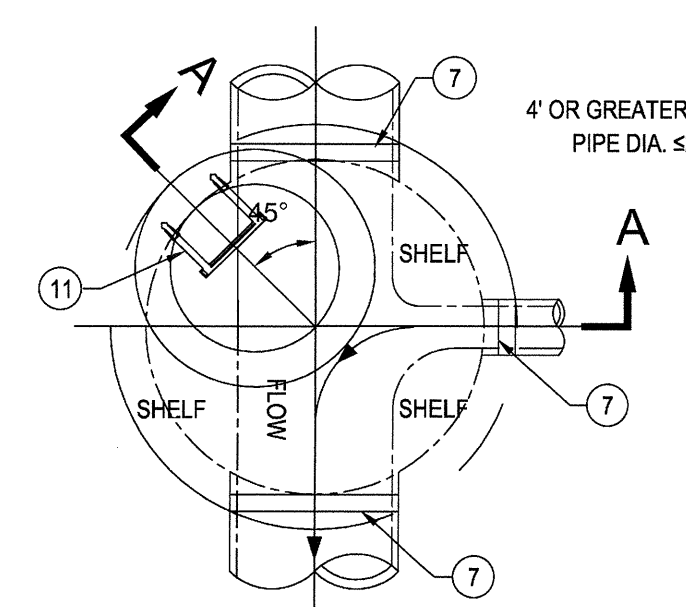


ISOMETRIC VIEW
SCALE: X1/2

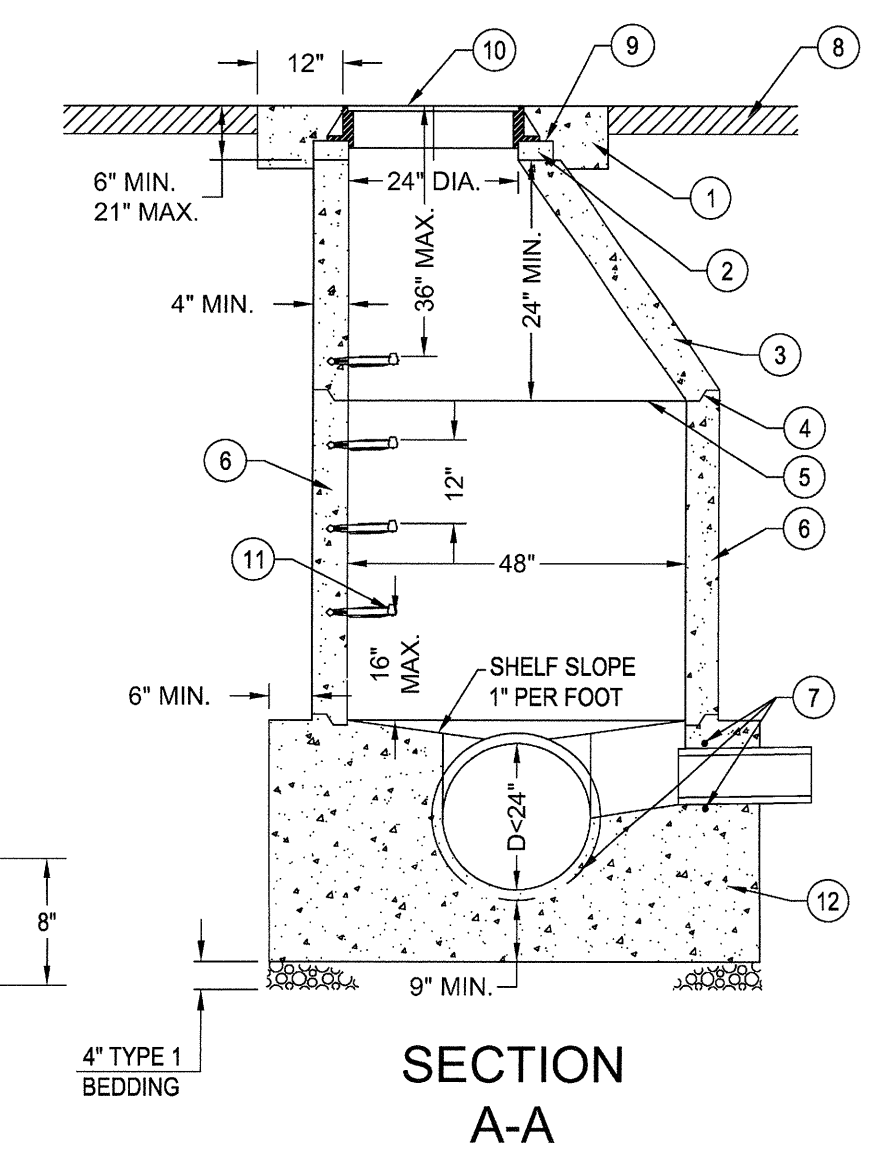
NOTES:

- (1) FIBERGLASS DUST PAN REQUIRED ON ALL MANHOLES THAT ARE NOT ON PAVED STREETS.
- (2) MANHOLE FRAMES & COVERS SHALL HAVE A TOLERANCE OF 1/8". COVERS SHALL NOT BE WARPED AND ANY THAT ARE, UPON TRAVEL, SHALL BE REPLACED. MACHINE ALL MATCHING SURFACES.
- (3) REFER TO SD-516 FOR MANHOLE COVER AND FLAT FRAME (30" OPENING).

7 STANDARD MANHOLE FRAME, COVER AND RISER
NOT TO SCALE



PLAN



SECTION A-A

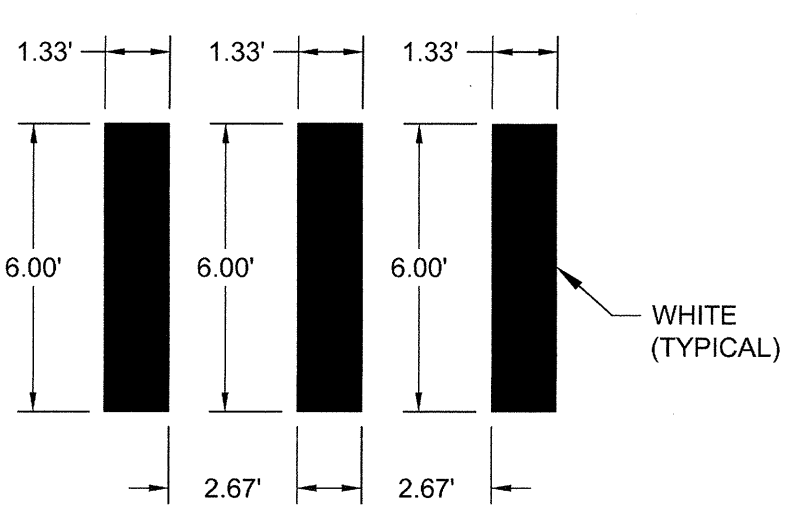
4 STANDARD MANHOLE TYPE A
NOT TO SCALE

LEGEND

- (1) CONCRETE COLLAR IN PAVED STREET SECTIONS PER DETAIL 6, SHEET C4.0.
- (2) GRADE RINGS GROUTED WATER TIGHT IN PLACE, NOT TO EXCEED 21" FROM FINISHED SURFACE TO TOP OF CONE.
- (3) PRECAST MONOLITHIC ECCENTRIC CONE SECTION - REBAR NOT SHOWN.
- (4) REMNEK OR APPROVED GASKETS ALL JOINTS
- (5) PROPERLY ALIGN ALL INTERIOR JOINTS.
- (6) PRECAST CONCRETE MANHOLE-BARREL SECTION - REBAR NOT SHOWN.
- (7) PRECAST GASKETED HUB RING OR RUBBER GASKETED COLLAR-FLEXIBLE AND WATER TIGHT.
- (8) REPLACEMENT SURFACING TO MATCH FLUSH WITH EXISTING SURFACING - AC SHOWN.
- (9) FRAME TO BE GROUTED TO GRADE RINGS.
- (10) FRAME AND COVER PER DETAIL 7, SHEET 4.0.
- (11) MANHOLE STEPS.
- (12) CAST IN PLACE MANHOLE BASE OR PRECAST BASE.

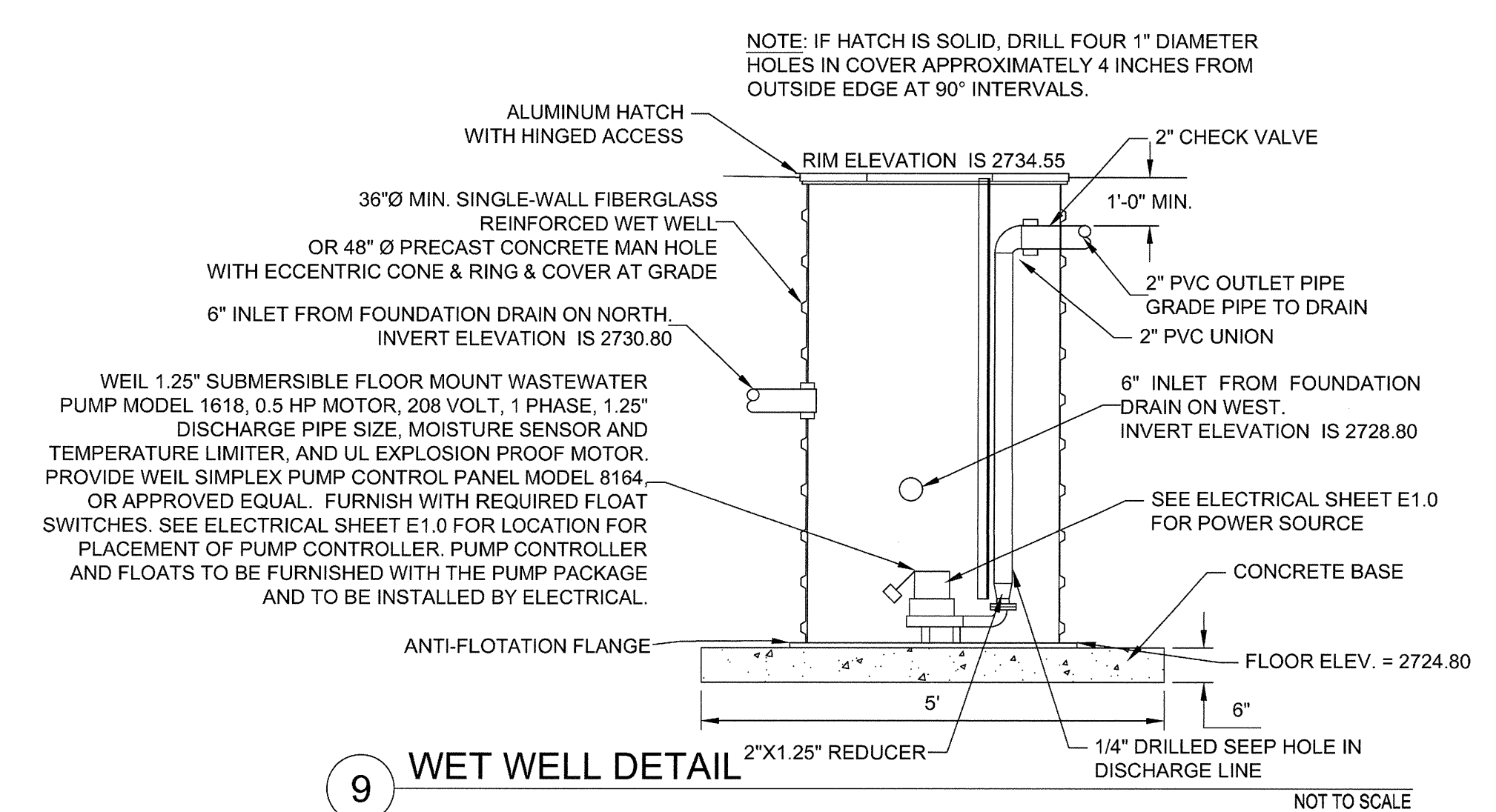
NOTES:

- (A) OPTIONAL PREFABRICATED MANHOLE BASE WITH APPROVED PIPE CONNECTIONS MAY BE USED WITH ENGINEERS APPROVAL.
- (B) PLACE VERTICAL WALL ON UPSTREAM SIDE OF MANHOLE, ROTATED 45 DEGREES.
- (C) WHERE PVC PIPE IS UTILIZED, INSTALL A RUBBER RING OR GASKET COLLAR WHERE THE PIPE IS IN CONTACT WITH MANHOLE BASE AND/OR MANHOLE CHANNEL, IN ORDER TO INSURE A WATER TIGHT SEAL.
- (D) PROVIDE MANHOLE CONCRETE REINFORCING TO ACCOMMODATED TRAFFIC LOADINGS.



CROSSWALK STRIPING

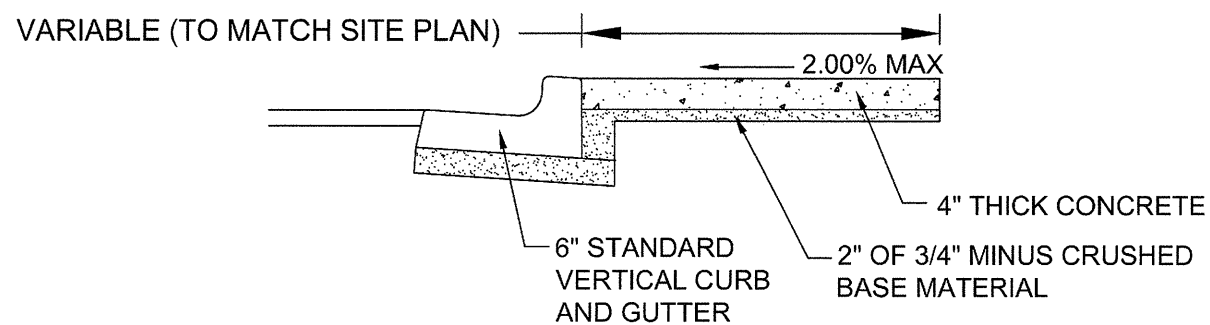
8 PAVEMENT MARKING DETAILS
NOT TO SCALE



9 WET WELL DETAIL
NOT TO SCALE

CONSTRUCTION DETAILS

| | | | | | | | | | | |
|---|--|--|--|--|--|---------------------------------|--|------------------|--------------|----------------------------|
| B & A Engineers, Inc. Consulting Engineers, Surveyors & Planners 5505 West Franklin Road Boise, ID 83705 Voice: 208.343.3381 Fax: 208.342.5792 Web: http://www.baengineers.com | ZGA ARCHITECTS & PLANNERS, CHARTERED 408 E. Parkcenter Blvd., Suite 205 Boise, Idaho 83706 t: (208) 345.8872 f: (208) 343.7162 www.zga.com | | CAD FILE NAME: 531-322_C4.0_Adwg | DRAWING TITLE CONSTRUCTION DETAILS | PROJECT TITLE VAMC PARKING GARAGE VOLUME A | DATE 05/13/2016 | | | | |
| | | | XREF FILE NAME: xVAbord.dwg | | | PROJECT NO. 531-322 | | | | |
| | | | APPROVED: CHIEF OF FACILITY MANAGEMENT SERVICE | | | BUILDING NUMBER 88 & 125 | | CHECKED JDC | DRAWN CAA | DRAWING NO. C4.0 |
| | | | APPROVED: MEDICAL CENTER DIRECTOR | | | LOCATION BOISE, IDAHO | | DWG 13 OF 126 | | |

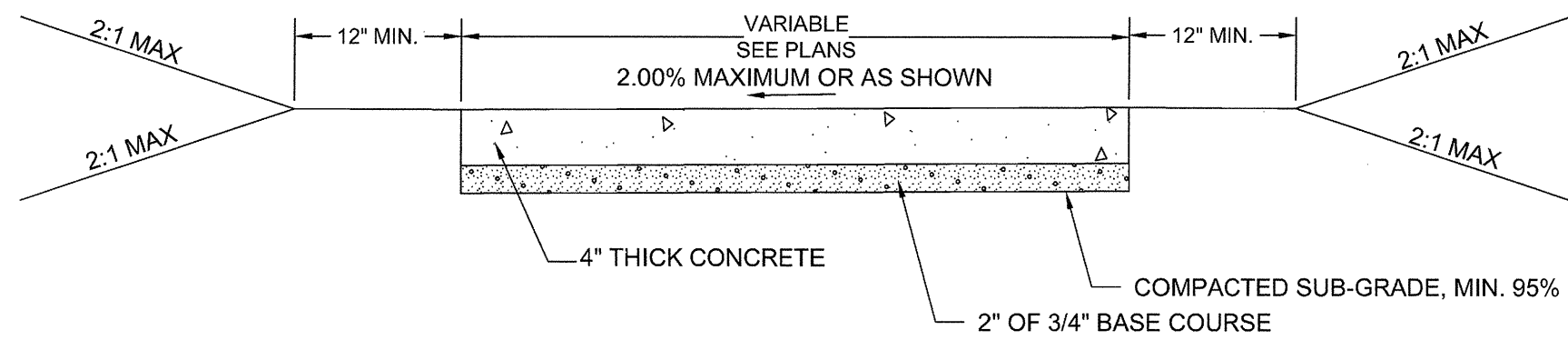


NOTES:

- BASE TO BE COMPACTED TO EXCEED 95% OF STANDARD DENSITY.
- SLOPE SIDEWALK AS SHOWN ON PLANS, SLOPE NOT TO EXCEED 1/4" PER FOOT (0.02 FT/FT) UNLESS OTHERWISE SPECIFIED ON PLANS.
- SCORE AT INTERVALS TO MATCH WIDTH OF WALK NOT TO EXCEED 5 FEET SPACING.
- 1/2" TRANSVERSE PERFORMED BITUMINOUS JOINTS AT THE TERMINUS POINTS FOR CURVE AND WHERE SIDEWALK IS PLACED BETWEEN TWO PERMANENT FOUNDATIONS, PLACE 1/2" EXPANSION JOINT MATERIAL ALONG THE BACK OF THE WALK THE FULL LENGTH.
- CONCRETE SHALL BE REINFORCED WITH 6X6 W1.4/1.4 WWM SET 2" FROM TOP OF CONCRETE.

1 TYPICAL CONCRETE SIDEWALK WITH ATTACHED CURB AND GUTTER

NOT TO SCALE

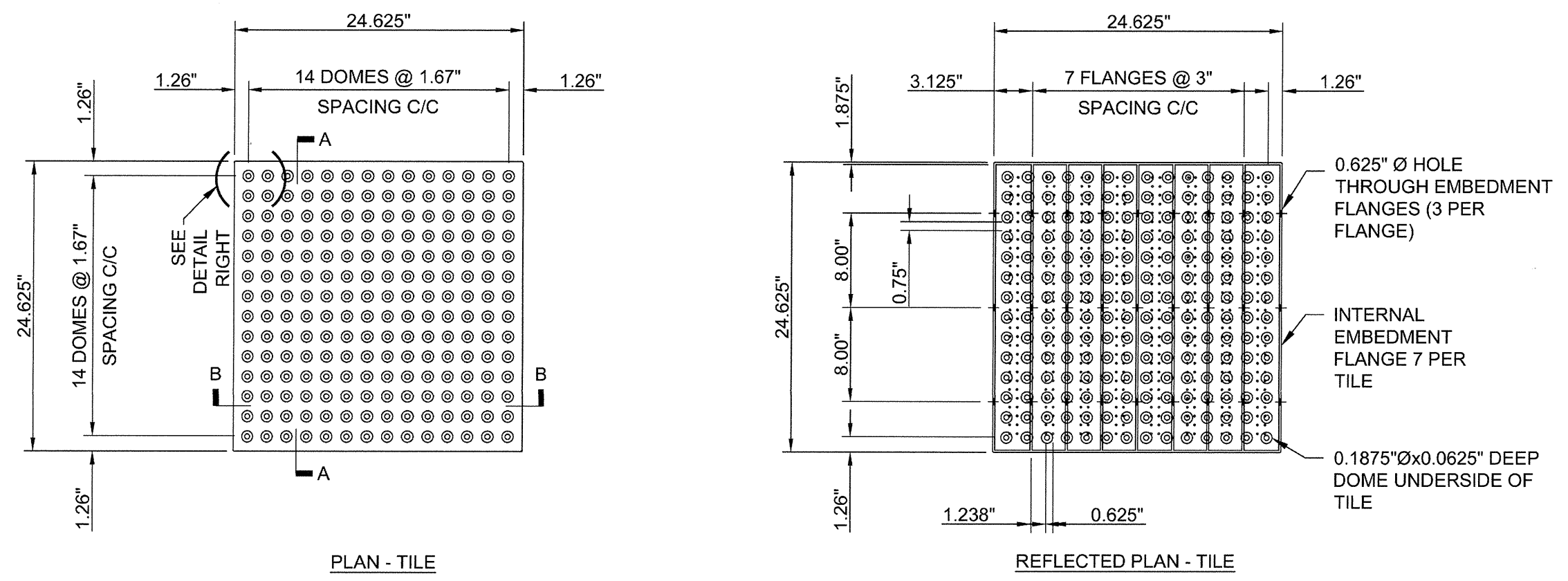
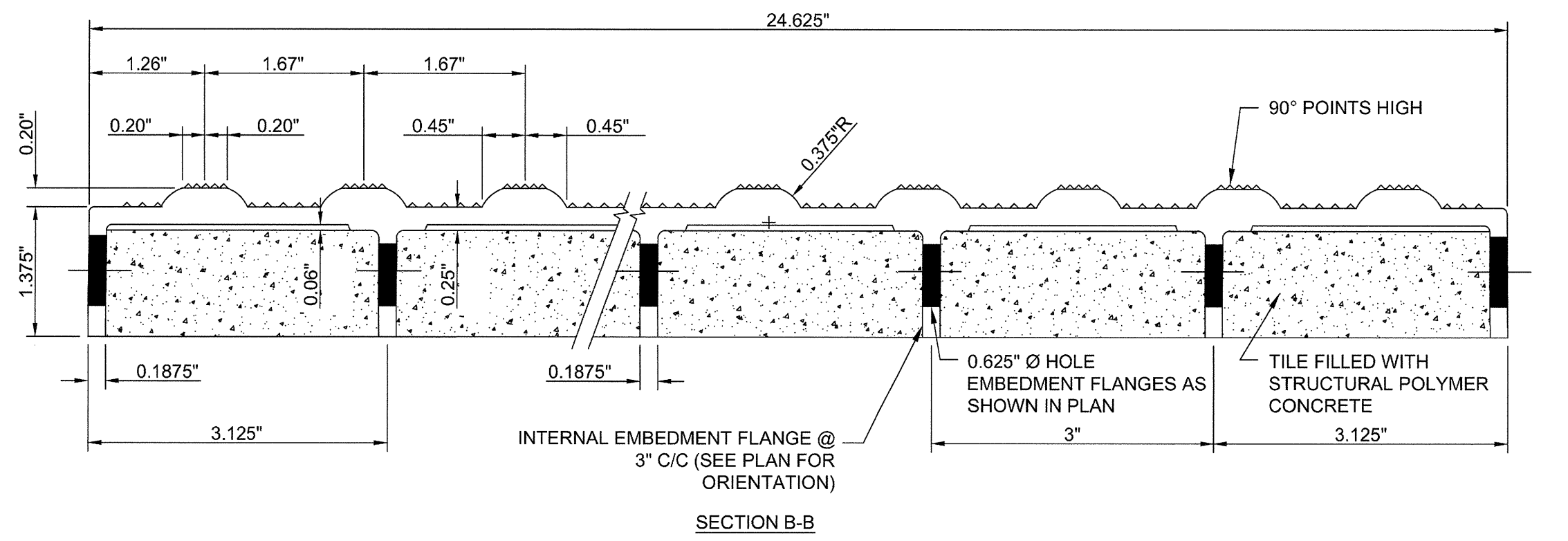
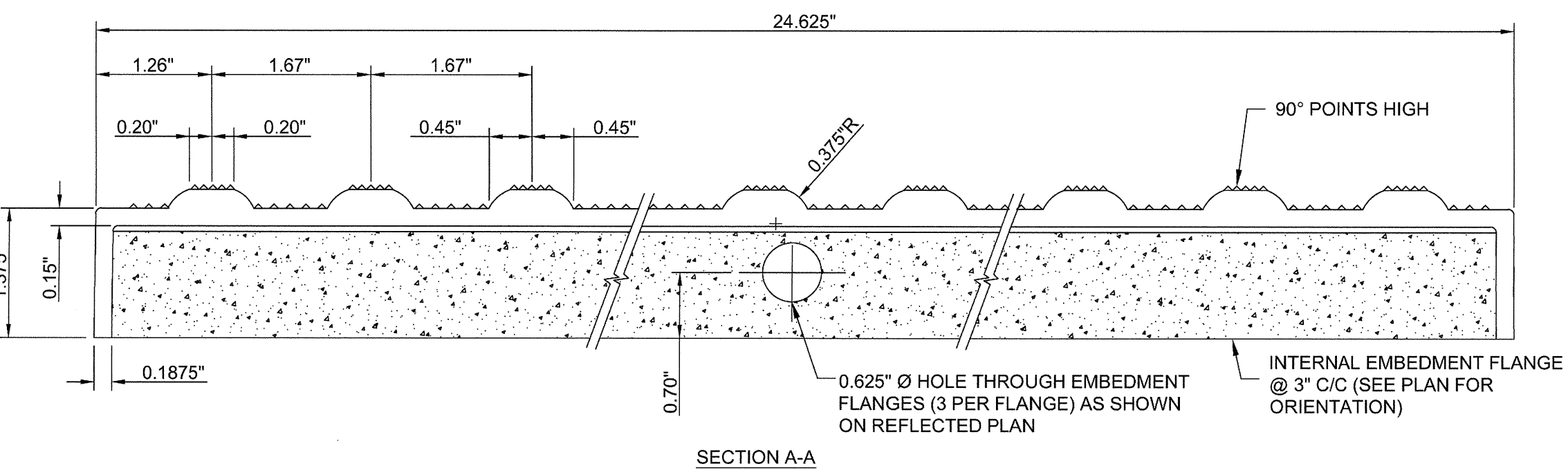


NOTES:

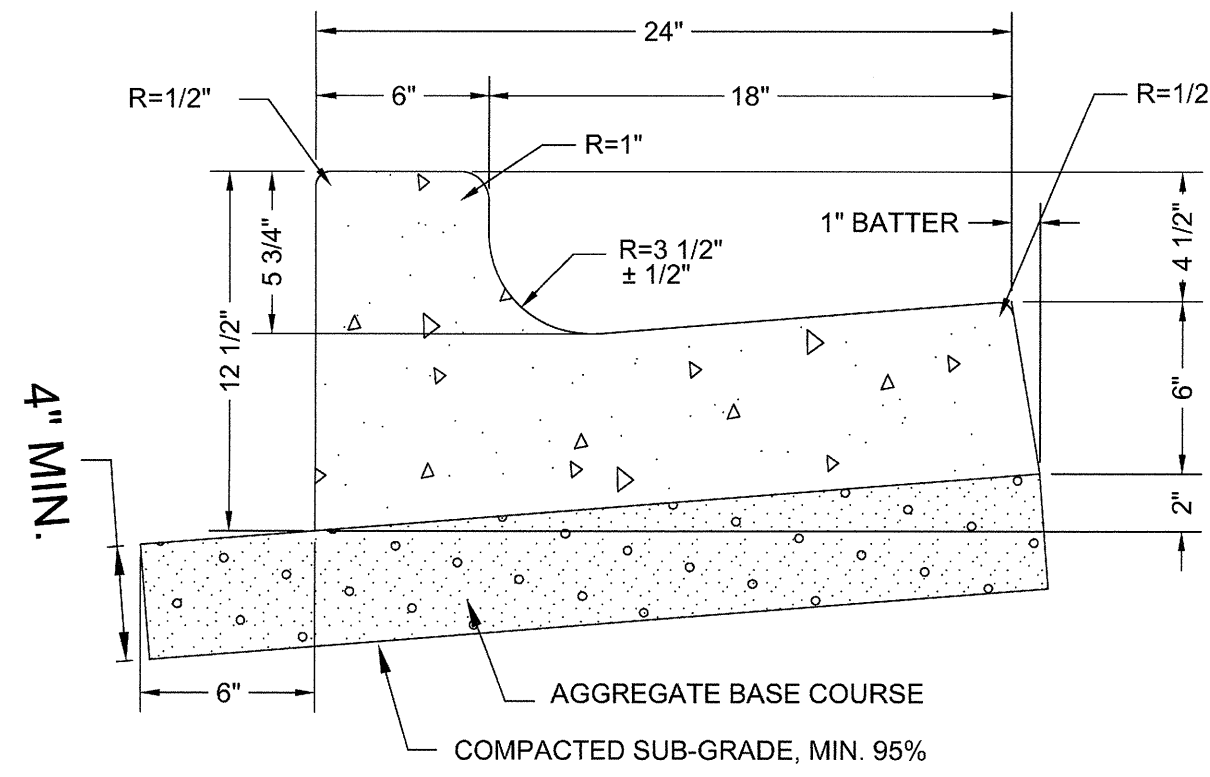
- BASE TO BE COMPACTED TO EXCEED 95% OF STANDARD DENSITY.
- SLOPE OF SIDEWALK NOT TO EXCEED 1/4" PER FOOT (0.02 FT/FT) UNLESS OTHERWISE SPECIFIED ON PLANS.
- SCORE AT INTERVALS TO MATCH WIDTH OF WALK NOT TO EXCEED 5 FEET SPACING.
- CONTROL JOINTS SHALL BE A MAXIMUM 12' ON CENTER.
- CONCRETE SHALL BE REINFORCED WITH 6X6 W1.4/1.4 WWM SET 2" FROM TOP OF CONCRETE.

5 TYPICAL SIDEWALK SECTION WITH NO CURB OR GUTTER

NOT TO SCALE

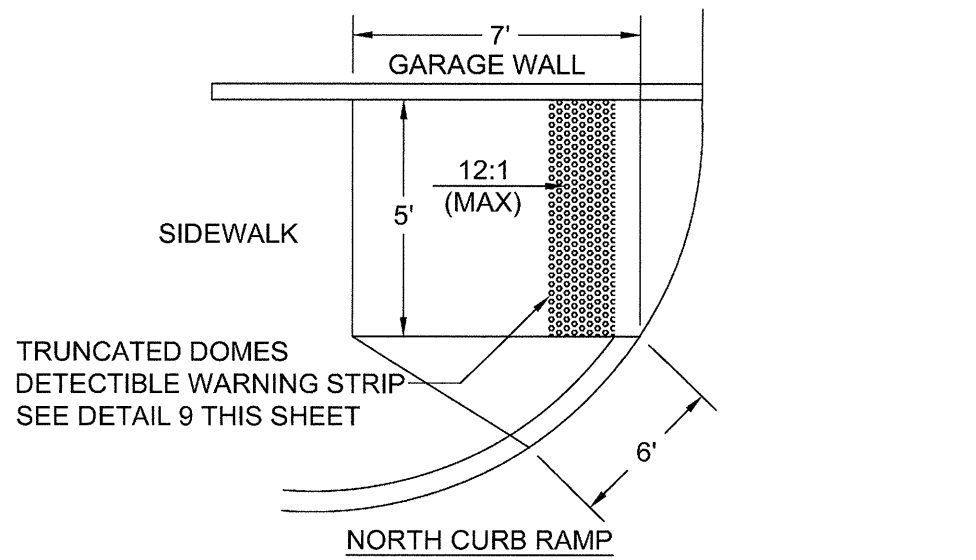


9 TRUNCATED DOME TACTILE - WARNING STRIP



2 TYPICAL CONCRETE 6" VERTICAL CURB AND GUTTER

NOT TO SCALE

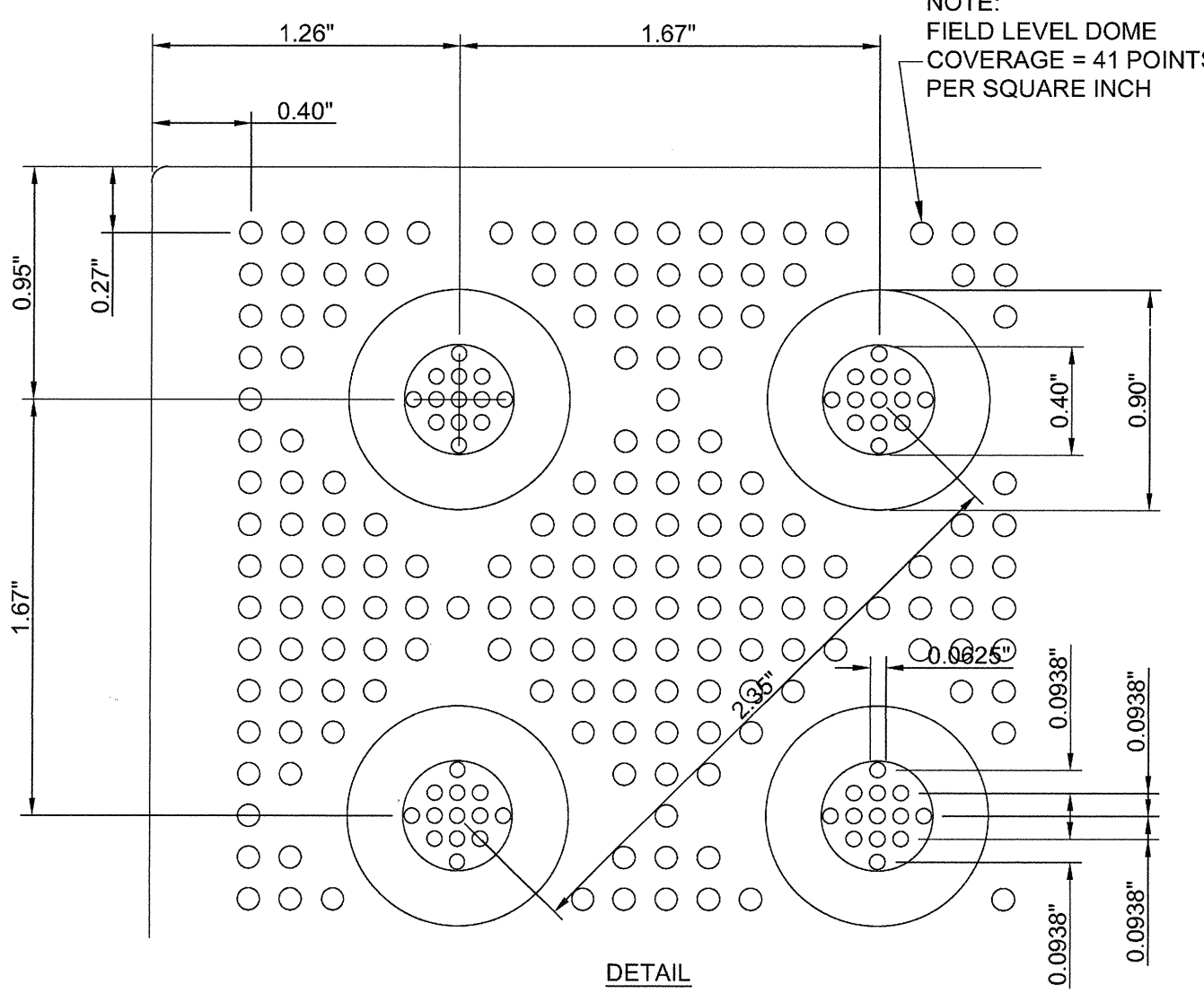


6 CURB ACCESS RAMP "B" DETAIL

NOT TO SCALE

DETECTABLE WARNING NOTES

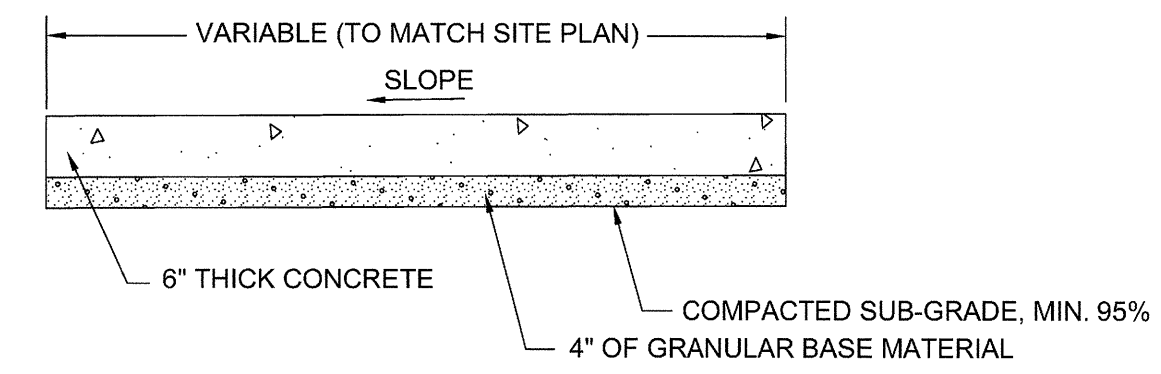
THE DETECTABLE WARNING STRIP MUST COVER THE ENTIRE WIDTH OF THE RAMP OPENING, EXCLUDING THE WINGS. ALL DOMES MUST BE ALIGNED IN THE DIRECTION OF TRAVEL. ONE CORNER OF THE LEADING EDGE OF THE DETECTABLE WARNING MAY BE MORE THAN 5 FEET FROM THE BACK OF THE CURB. WHEN LOCATED ALONG A CURB RETURN, THE LEADING EDGE OF THE DETECTABLE WARNING MAY BE DEFINED BY THE CHORD DRAWN BETWEEN THE LEADING EDGES OF THE RAMP OPENING.



CONSTRUCTION DETAILS

NOTES:

- GRADE AND ALIGNMENT TO BE ESTABLISHED OR APPROVED BY THE ENGINEER AND THE PUBLIC AGENCY HAVING JURISDICTION.
- BASE: 4-INCH COMPACTED DEPTH OF 3/4-INCH MINUS CRUSHED AGGREGATE BASE COURSE, PLACE AS SPECIFIED AND PAID UNDER SECTION-802 ISPMC, COMPACTED TO EXCEED 95% OF STANDARD PROCTOR.
- 1/2-INCH PREFORMED EXPANSION JOINT MATERIAL (AASHTO M 213) AT TERMINAL POINTS OF RADII.
- CONTINUOUS PLACEMENT PREFERRED. SCORE INTERVALS 10-FEET MAXIMUM SPACING (8-FEET W/SIDEWALK).

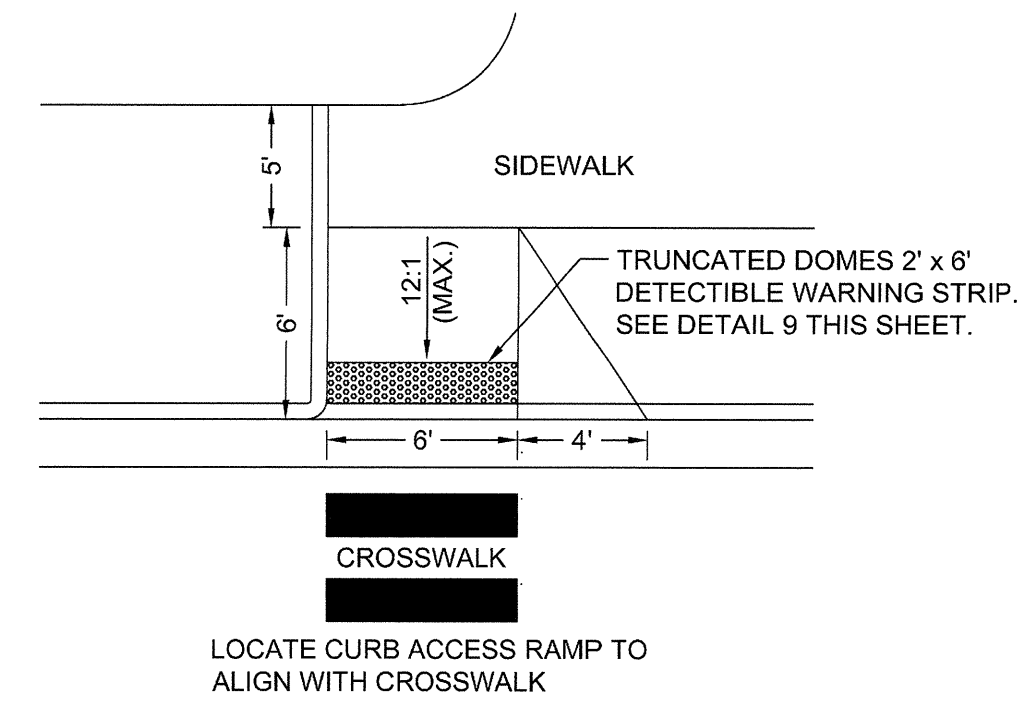


NOTES:

- GRANULAR BASE MATERIAL TO BE COMPACTED TO EXCEED 95% OF STANDARD DENSITY.
- CONTROL JOINTS SHALL BE A MAXIMUM 12' ON CENTER.
- CONCRETE SHALL BE REINFORCED WITH 6X6 W1.4/1.4 WWM SET 4" FROM TOP OF CONCRETE.

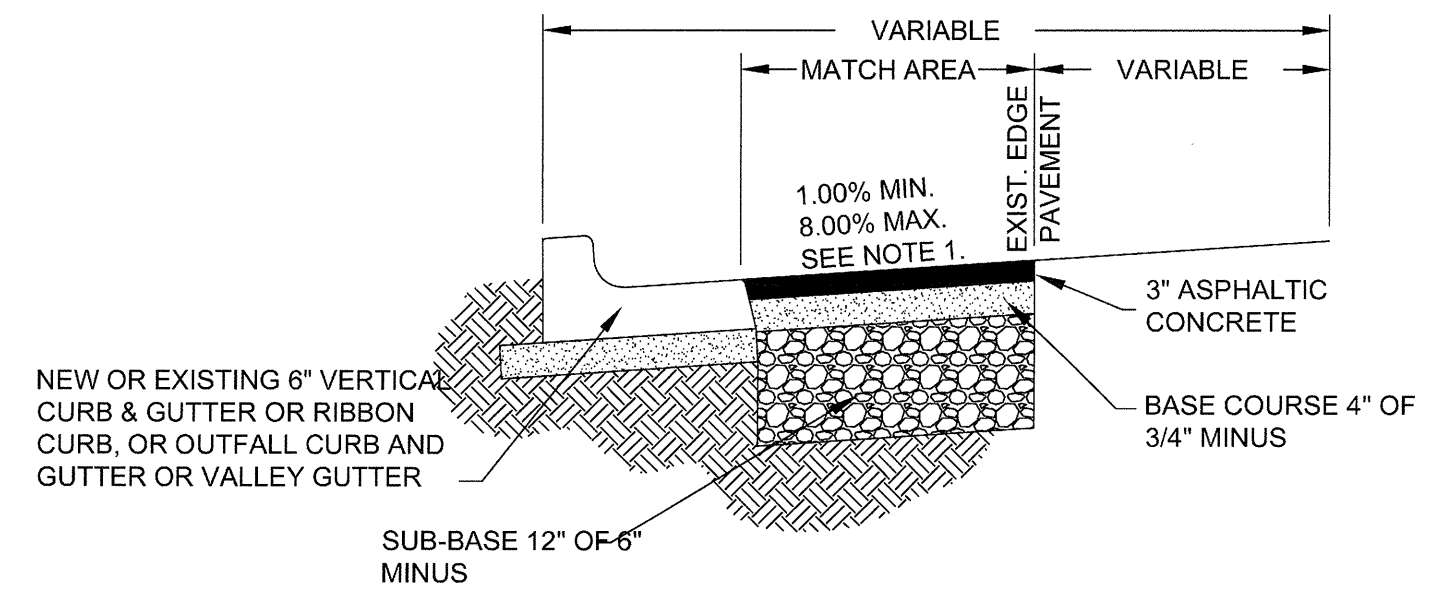
3 TYPICAL CONCRETE PAD SECTION

NOT TO SCALE



4 CURB ACCESS RAMP "A" DETAIL

NOT TO SCALE

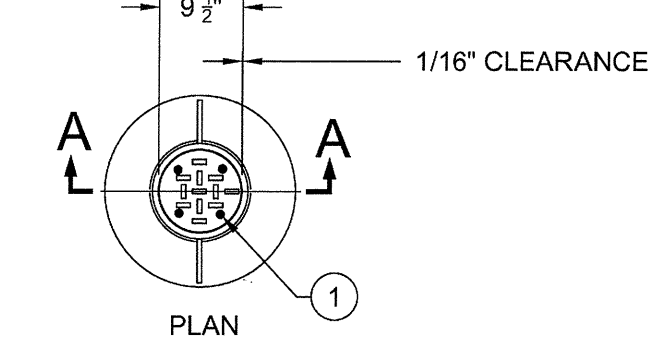


NOTES:

- ASPHALT MATCH SHALL FOLLOW EXISTING ASPHALT SLOPE OF ROADWAY AND SHALL HAVE A MINIMUM CROSS SLOPE OF 1% WITH 2% RECOMMENDED. CROSS SLOPE OF 4.0% MAXIMUM IN TRAFFIC LANE WITH 8.0% MAXIMUM IN PARKING AREA.
- EXISTING ASPHALT SHALL BE CUT TO A NEAT STRAIGHT LINE PARALLEL AND/OR PERPENDICULAR TO THE CENTERLINE OF THE STREET AND SEALED WITH AN ASPHALT TACK COAT BEFORE PAVING.

7 ASPHALT MATCH SECTION

NOT TO SCALE

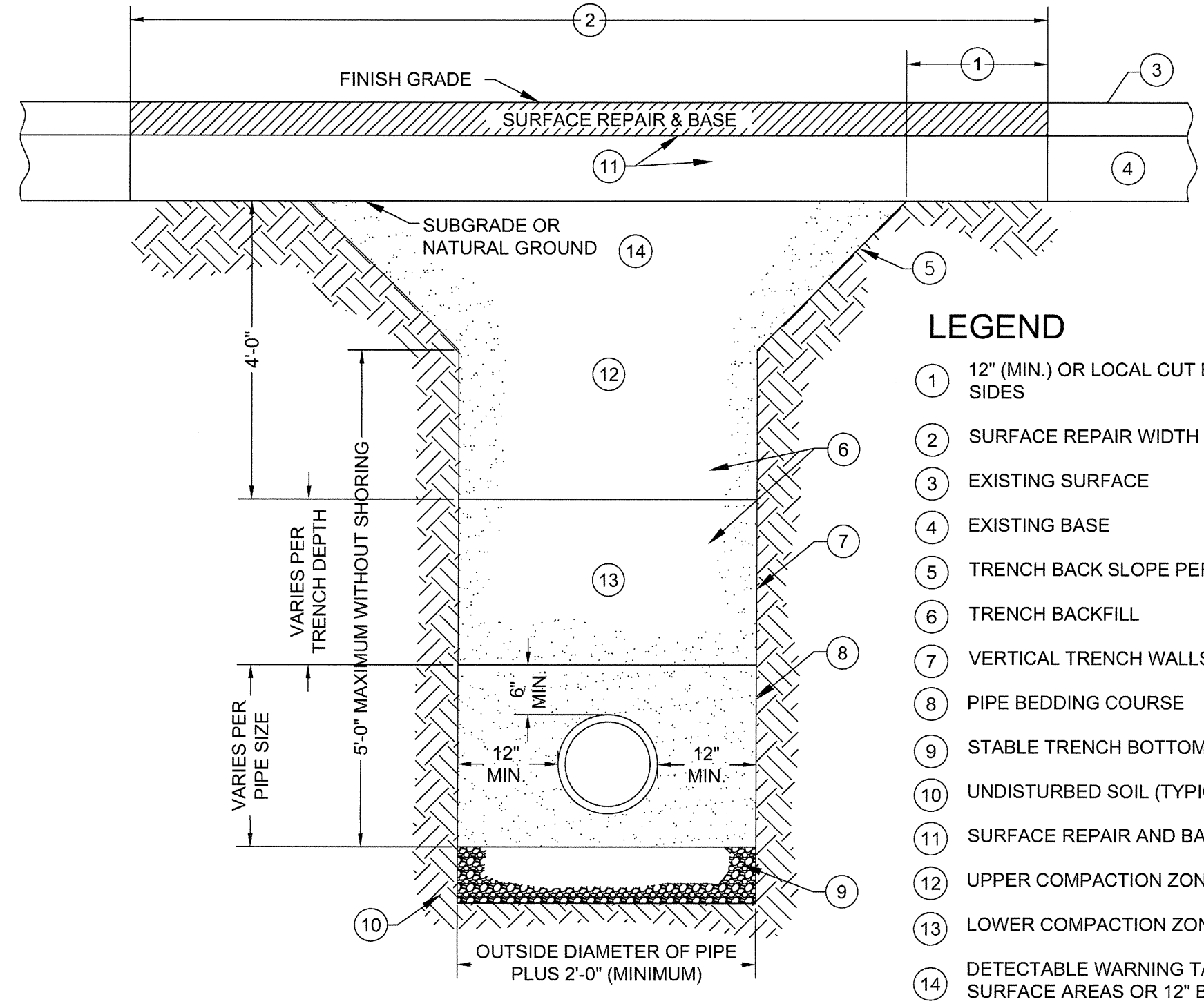


LEGEND

- 4-1" DIA. HOLES ON 3 1/2" RADIUS.
- 12" DIA. X 1'-0" PVC, DIP OR CP.
- FIBER JOINT MATERIAL.
- 8" PVC ASTM 3034.
- 45° BENDS.
- "Y" FITTINGS.
- EXISTING OR NEW PIPE - GRADE AT 0.4% MINIMUM.
- TYPE 1 BEDDING MATERIAL.
- MISSION COUPLER OR APPROVED SUB.
- UNDISTURBED MATERIAL.

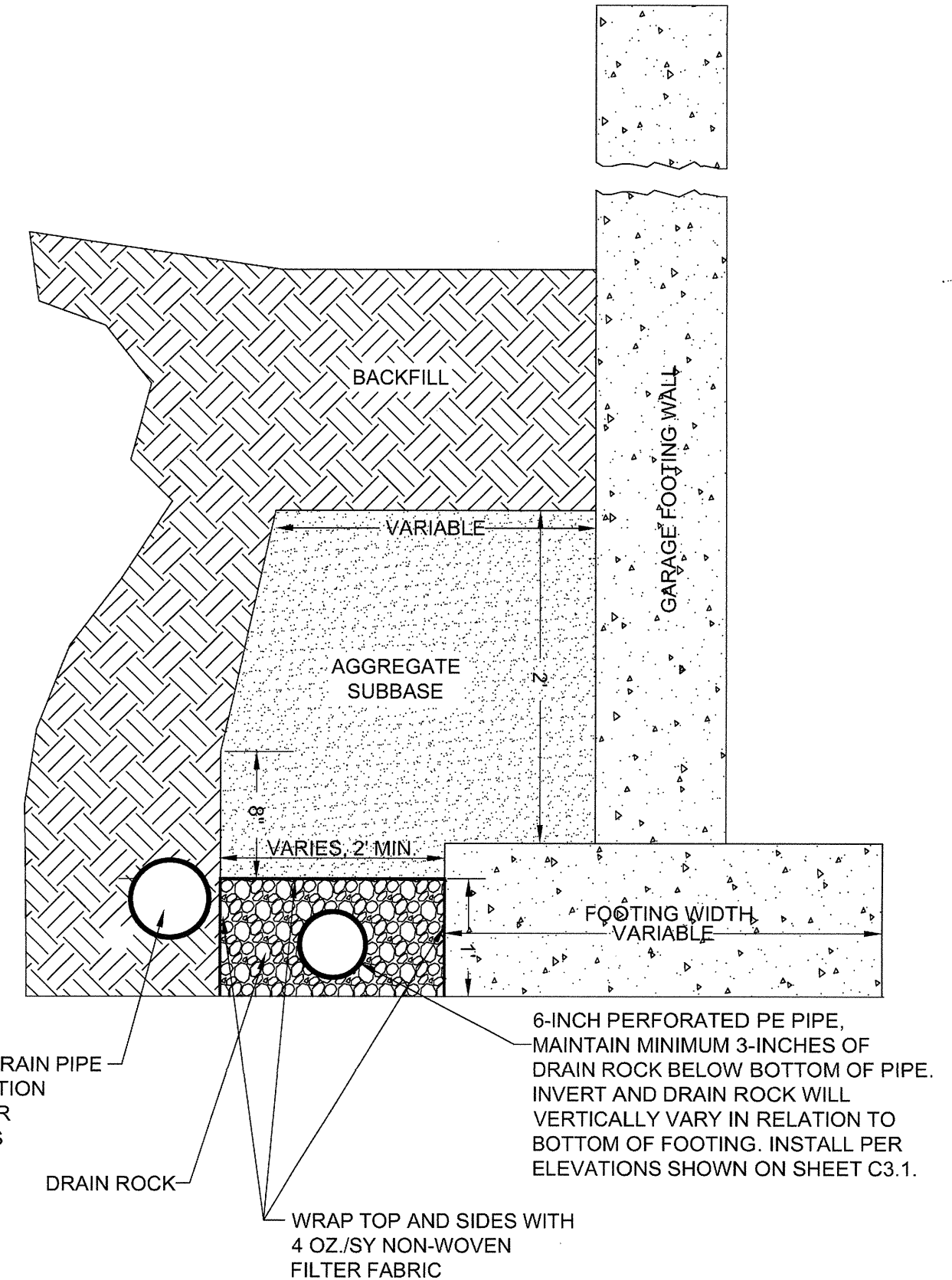
8 STANDARD 8" CLEAN-OUT DETAIL

NOT TO SCALE



10 TYPICAL TRENCH CROSS SECTION

NOT TO SCALE



11 FOOTING DRAIN - EXTERIOR WALL

NOT TO SCALE

| REVISIONS | DATE |
|-----------|------|
| | |

B & A Engineers, Inc.
Consulting Engineers, Surveyors & Planners
5505 West Franklin Road Boise, ID 83705
Voice: 208.343.3381 Fax: 208.342.5792
Web: http://www.baengineers.com

ZGA ARCHITECTS & PLANNERS, CHARTERED
408 E. Parkcenter Blvd., Suite 205 Boise, Idaho 83706 | t: (208) 345.8872 | f: (208) 343.7162 | www.zga.com

CAD FILE NAME:
531-322_C4.1_A.dwg
XREF FILE NAME:
xVAbord.dwg

DRAWING TITLE
CONSTRUCTION DETAILS

PROJECT TITLE
VAMC PARKING GARAGE VOLUME A

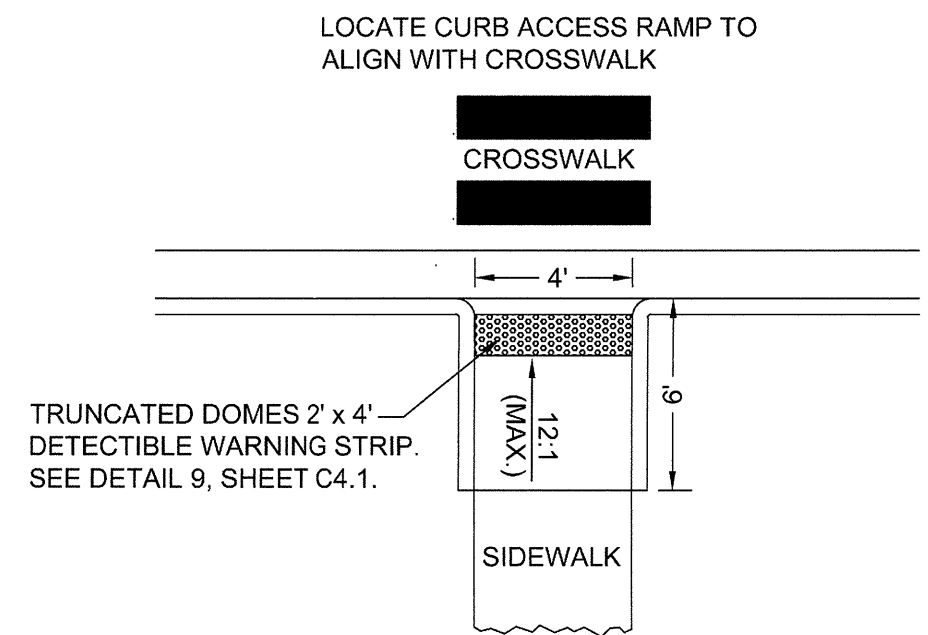
DATE
05/13/2016
PROJECT NO.
531-322
DRAWING NO.
C4.1
DWG 14 OF 126

FOR CONSTRUCTION

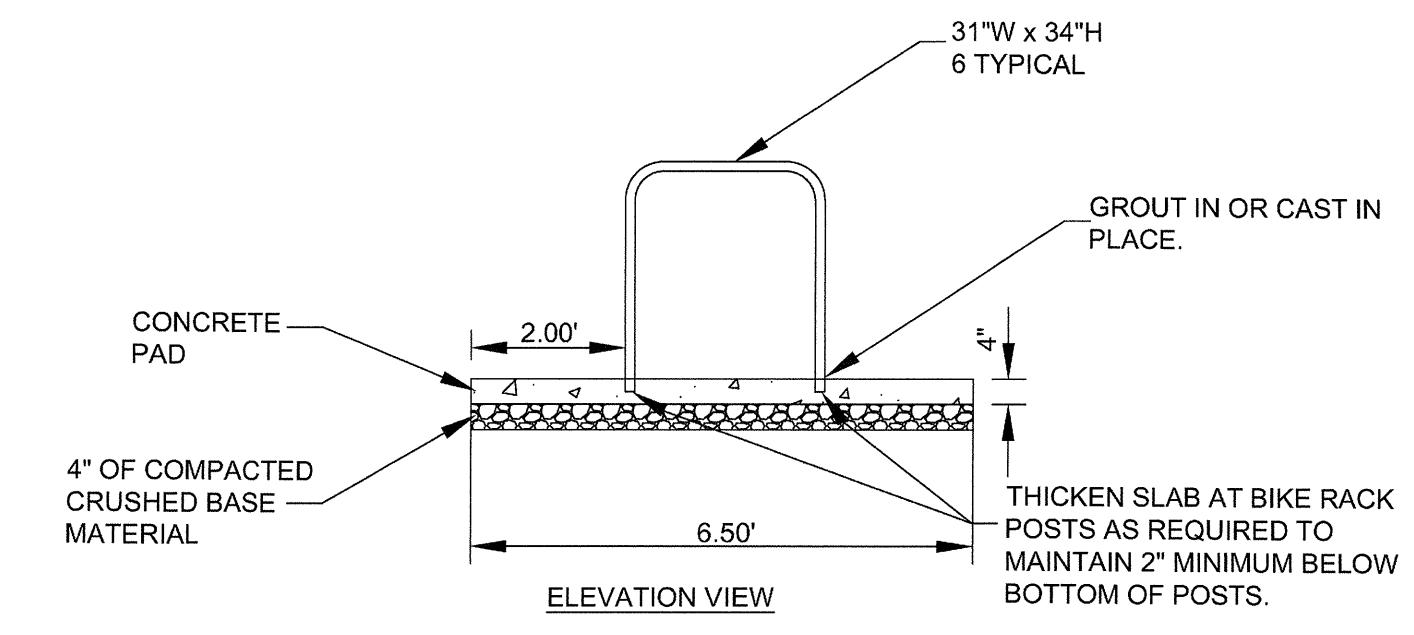
W

DEPARTMENT OF VETERANS AFFAIRS

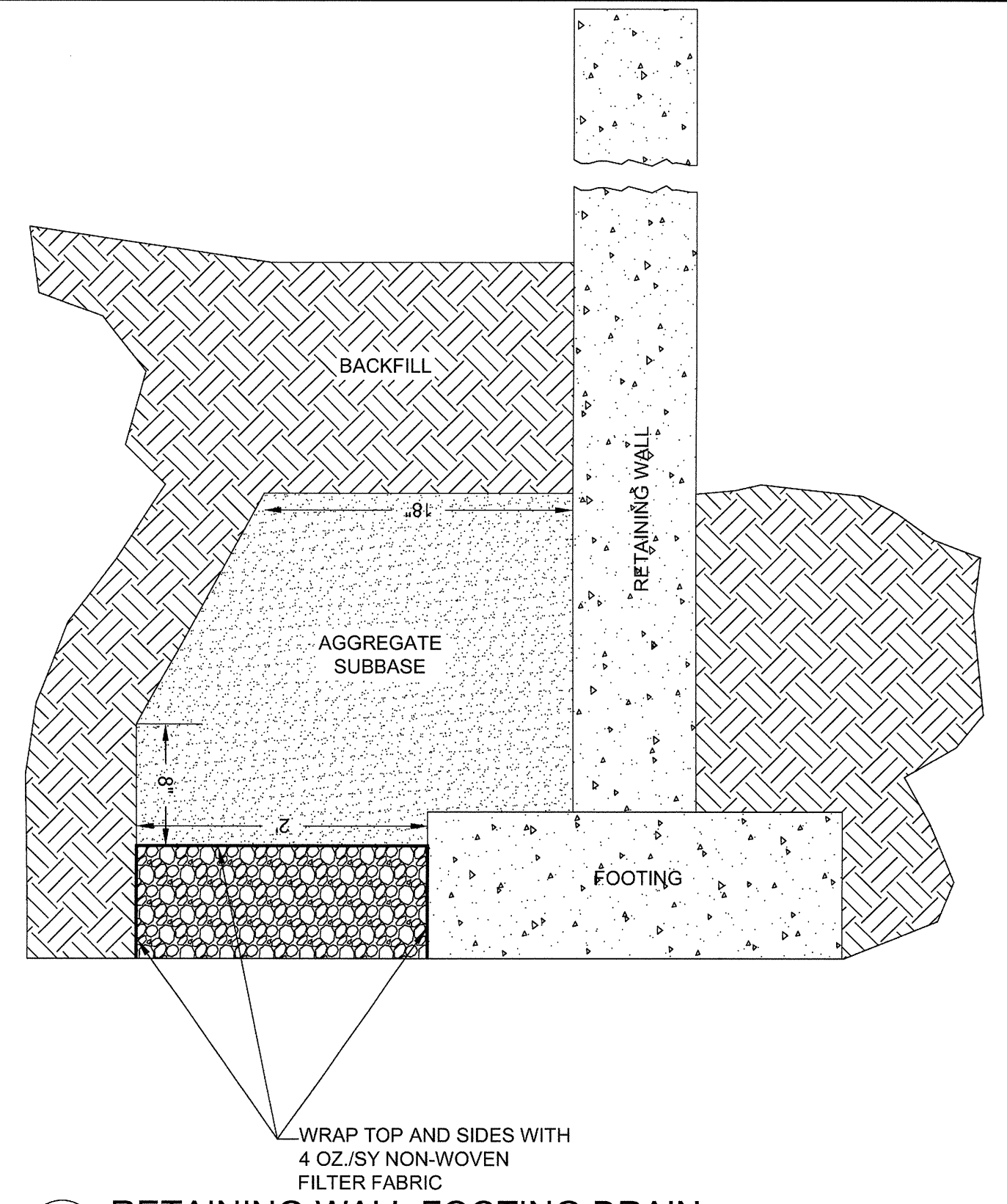
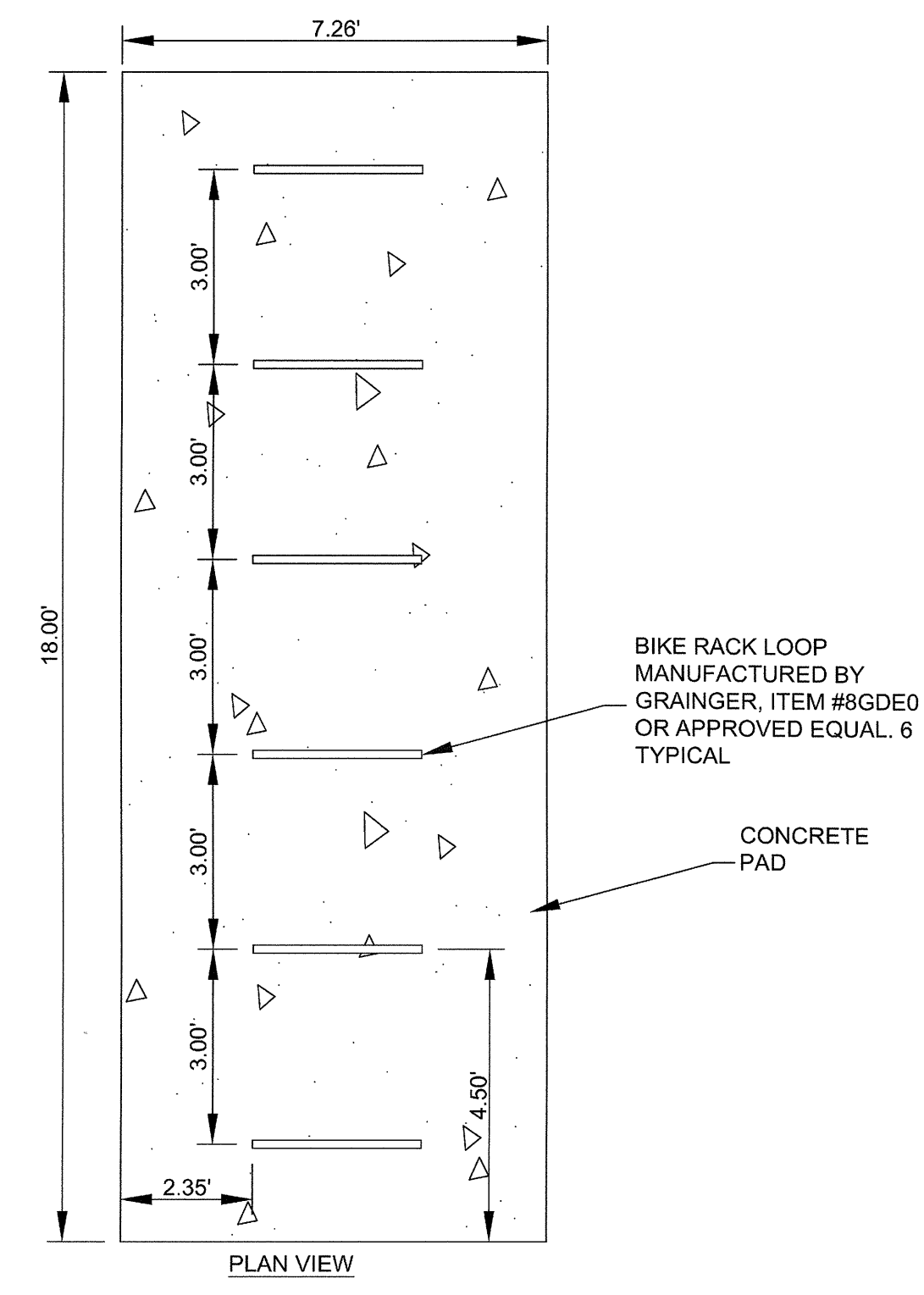
THREE INCHES = ONE FOOT
ONE AND ONE HALF INCHES = ONE FOOT
ONE INCH = ONE FOOT
THREE QUARTERS INCH = ONE FOOT
ONE HALF INCH = ONE FOOT
THREE EIGHTHS INCH = ONE FOOT
ONE QUARTER INCH = ONE FOOT
ONE EIGHTH INCH = ONE FOOT



1 CURB ACCESS RAMP "C" DETAIL
NOT TO SCALE

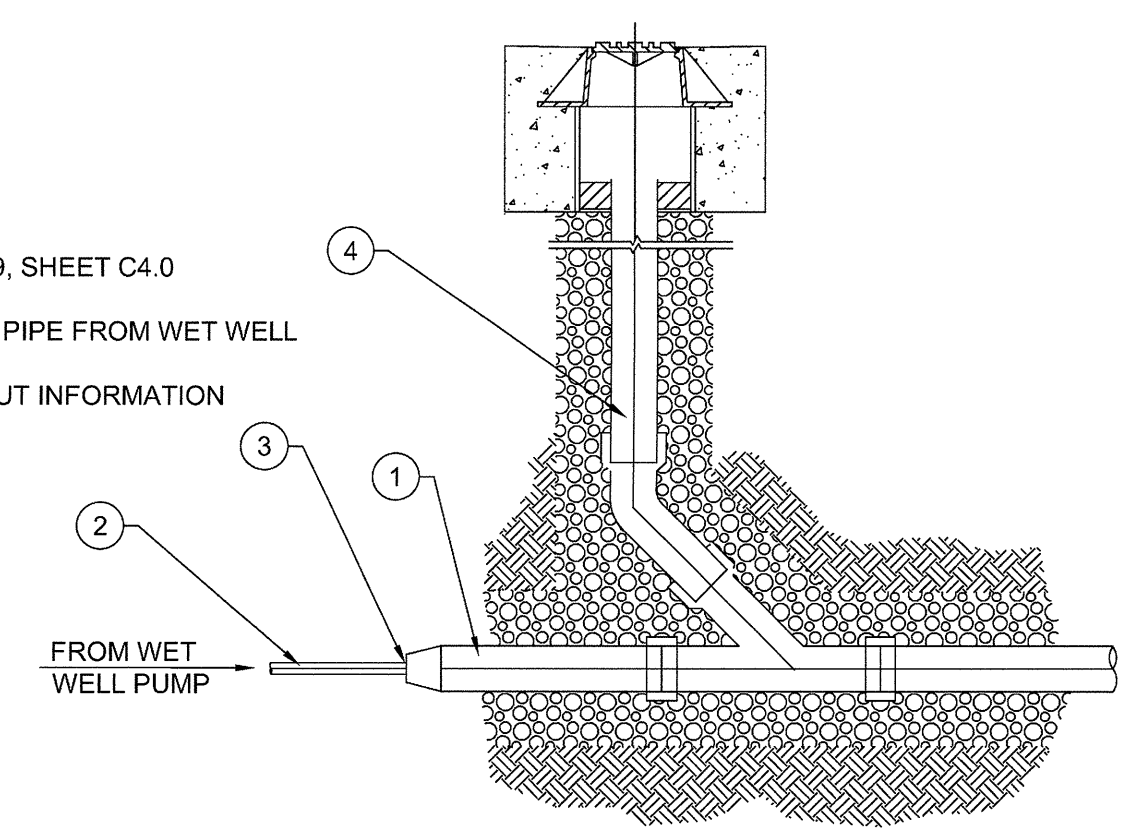


2 STANDARD BIKE RACK DETAIL
NOT TO SCALE

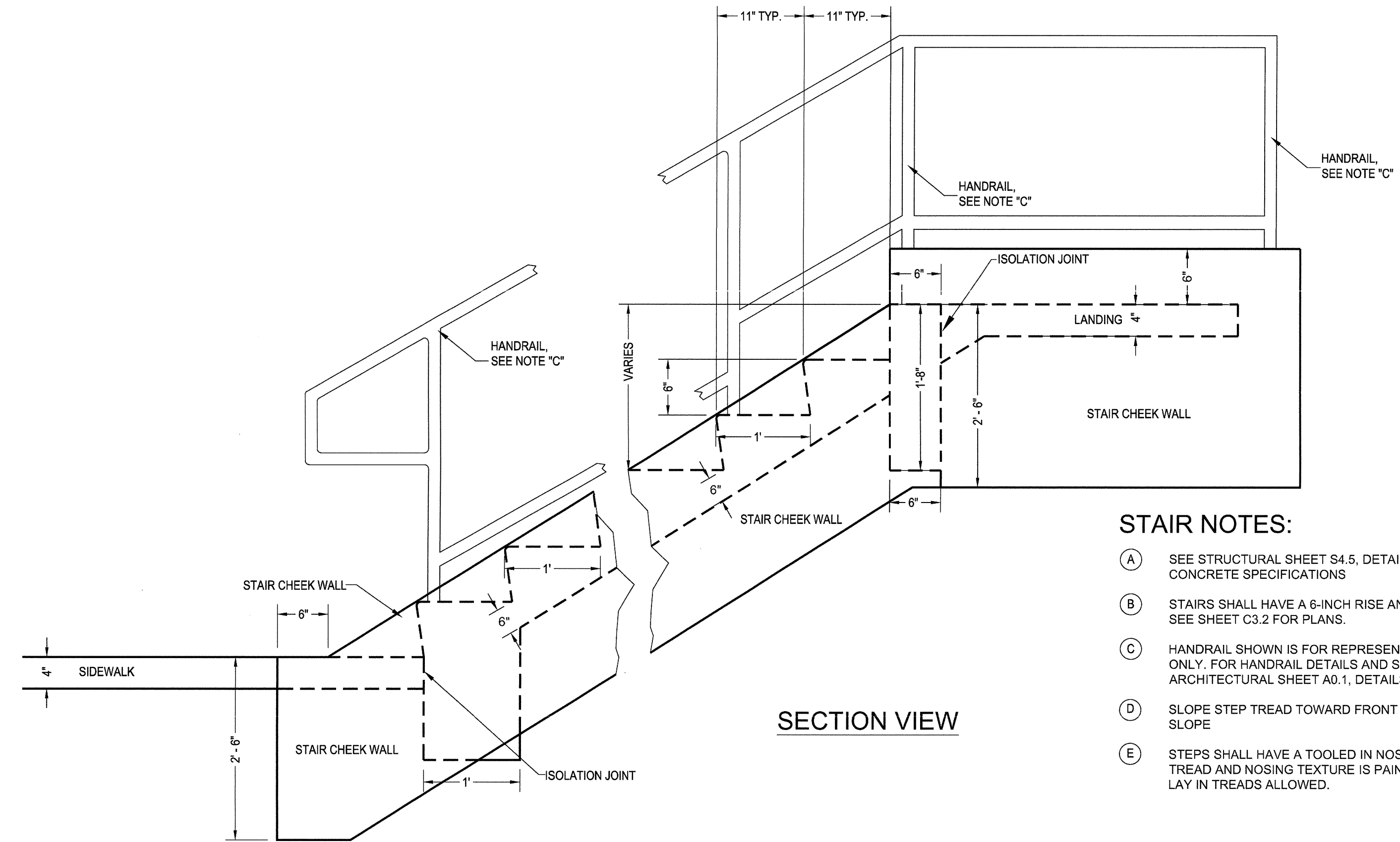


3 RETAINING WALL FOOTING DRAIN
NOT TO SCALE

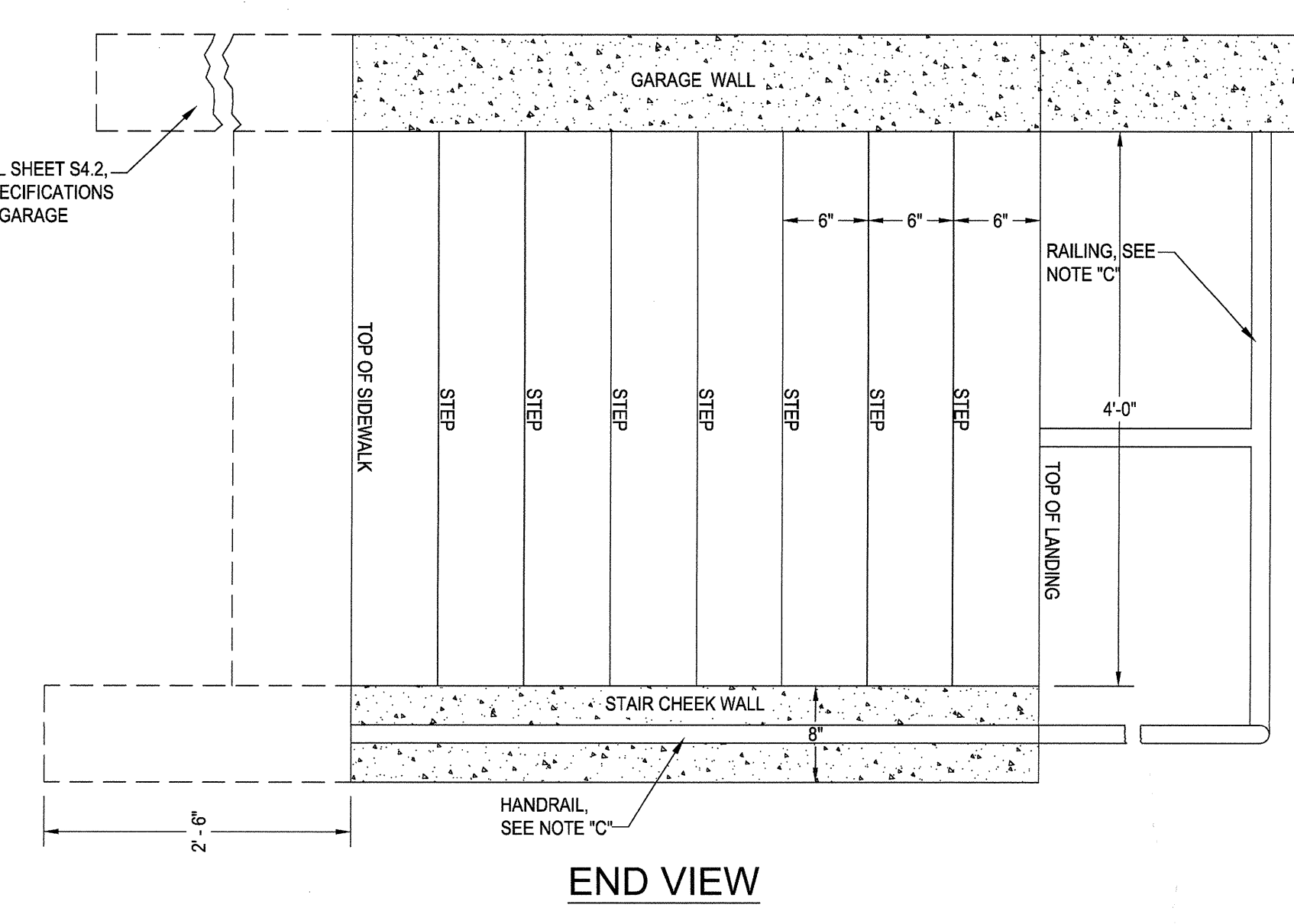
- LEGEND
- 1 8" PVC DRAIN PIPE
 - 2 2" PIPE FROM WET WELL, SEE DETAIL 9, SHEET C4.0
 - 3 REDUCE 8" TO 2" AND CONNECT TO 2" PIPE FROM WET WELL
 - 4 SEE DETAIL 8, SHEET 4.1 FOR CLEANOUT INFORMATION



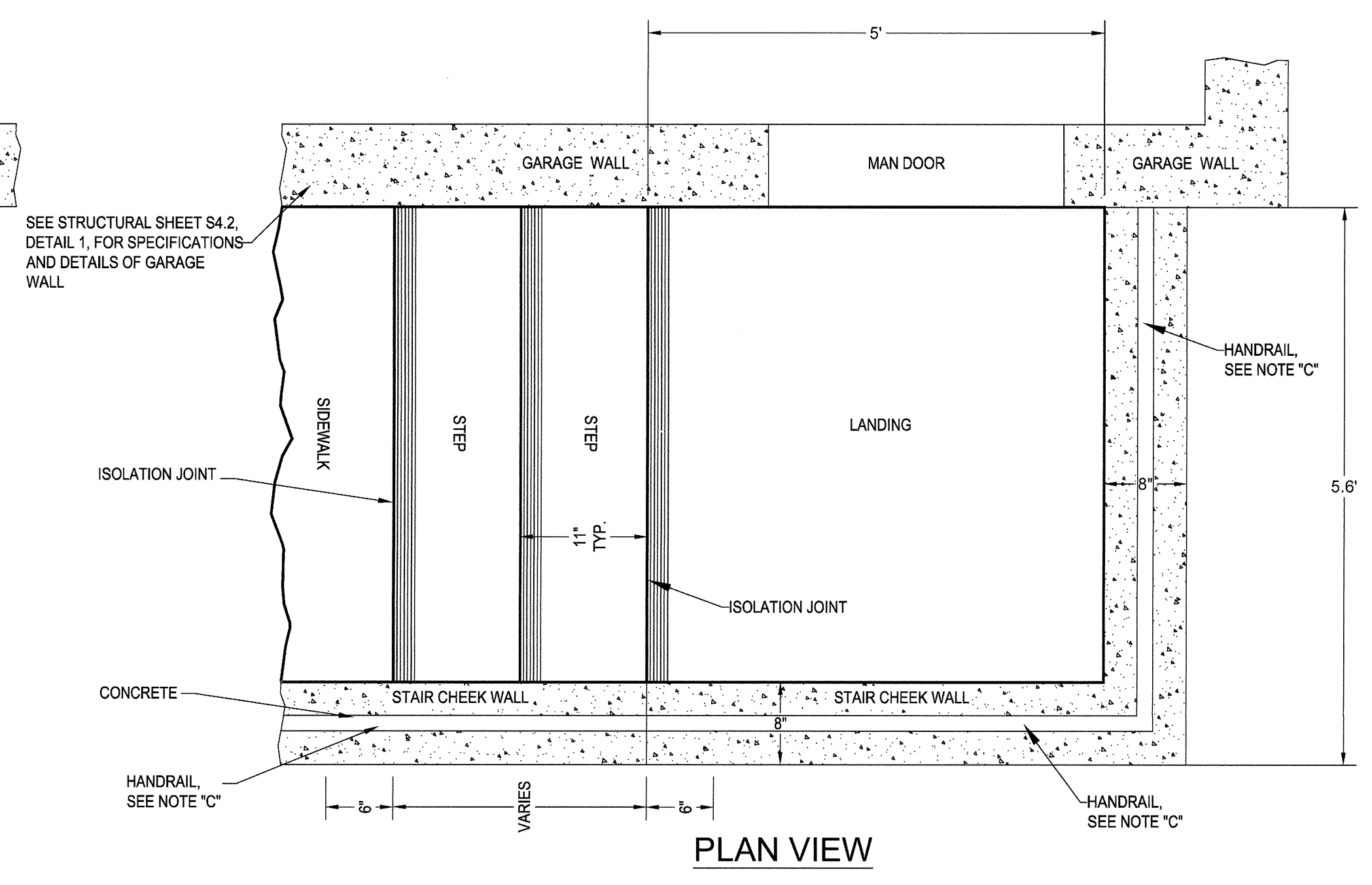
4 2" PIPE TO CLEAN-OUT DETAIL
NOT TO SCALE



- STAIR NOTES:
- A SEE STRUCTURAL SHEET S4.5, DETAILS 10 & 13, FOR CONCRETE SPECIFICATIONS
 - B STAIRS SHALL HAVE A 6-INCH RISE AND 12-INCH TREAD. SEE SHEET C3.2 FOR PLANS.
 - C HANDRAIL SHOWN IS FOR REPRESENTATIVE PURPOSE ONLY. FOR HANDRAIL DETAILS AND SPECIFICATIONS SEE ARCHITECTURAL SHEET A0.1, DETAILS 4 AND 5.
 - D SLOPE STEP TREAD TOWARD FRONT OF STEP AT 1% SLOPE
 - E STEPS SHALL HAVE A TOOLED IN NOSING TEXTURE IN TREAD AND NOSING TEXTURE IS PAINTED YELLOW. NO LAY IN TREADS ALLOWED.



END VIEW

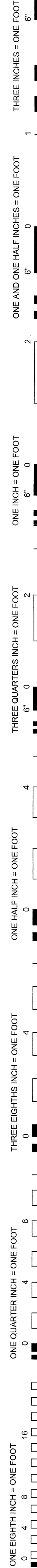


PLAN VIEW

5 STAIR & LANDING AT SOUTWEST MAN DOOR CONSTRUCTION DETAIL
NOT TO SCALE

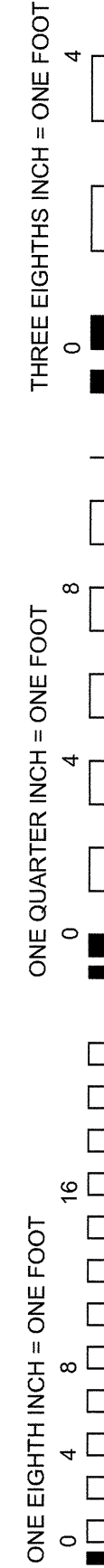
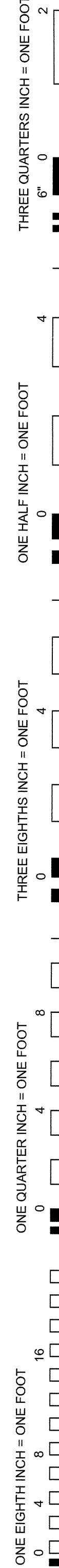
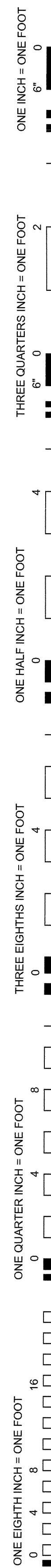
CONSTRUCTION DETAILS

| | | | | | | | | | | |
|-----------|------|---|--|--|--|--|--|--|---------------------------|---|
| REVISIONS | DATE | B & A Engineers, Inc. Consulting Engineers, Surveyors & Planners 5505 West Franklin Road Boise, ID 83705 Voice: 208.343.3381 Fax: 208.342.5792 Web: http://www.baengineers.com | | ZGA ARCHITECTS & PLANNERS, CHARTERED 408 E. Parkcenter Blvd., Suite 205 Boise, Idaho 83706 t: (208) 345.8872 f: (208) 343.7162 www.zga.com | | CAD FILE NAME: 531-322_C4.2_A.dwg XREF FILE NAME: xVAbord.dwg | DRAWING TITLE CONSTRUCTION DETAILS | PROJECT TITLE VAMC PARKING GARAGE VOLUME A | DATE 05/13/2016 | FOR CONSTRUCTION DEPARTMENT OF VETERANS AFFAIRS |
| | | | | | | APPROVED: CHIEF OF FACILITY MANAGEMENT SERVICE | BUILDING NUMBER 88 & 125 | CHECKED JDC | DRAWN CAA | |

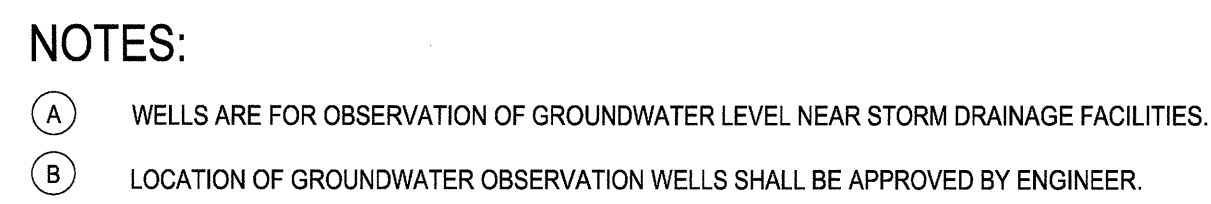
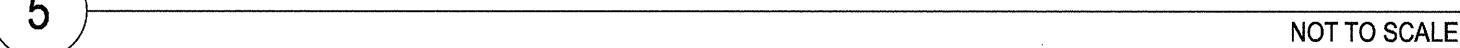


1. REFER TO SHEET C3.3 FOR MORE INFORMATION.
2. IF BEDROCK OR SEASONAL HIGH GROUNDWATER IS ENCOUNTERED (HIGHER THAN INDICATED ON THE PLANS), THEN THE CONTRACTOR SHALL NOTIFY THE PROJECT ENGINEER FOR POSSIBLE REDESIGN OF SEEPAGE BEDS.
3. SEE DETAIL 2, THIS PAGE, FOR SEEPAGE BED DIMENSIONS.
4. SEASONAL HIGH GROUNDWATER WAS DETERMINED FROM A GEOTECHNICAL ENGINEERING EVALUATION REPORT BY MTI DATED 25-MARCH-2015.

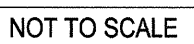
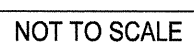
NOT TO SCALE



NOT TO SCALE



NOT TO SCALE



 **B & A Engineers, Inc.**
Consulting Engineers, Surveyors & Planners
5505 West Franklin Road Boise, ID 83705
Voice: 208.343.3381 Fax: 208.342.5792
Web: <http://www.baengineers.com>

408 E. Parkcenter Blvd., Suite 205 | Boise, Idaho 83706 | t: (208) 345.8872 | f: (208) 343.7162 | www.zga.com

APPROVED: MEDICAL CENTER DIRECTOR

DWG 16 OF 126

DEPARTMENT OF VETERANS AFFAIRS