



ONE EIGHTH INCH - ONE FOOT

ONE SIXTH INCH - ONE FOOT

ONE QUARTER INCH - ONE FOOT

ONE HALF INCH - ONE FOOT

THREE EIGHTHS INCH - ONE FOOT

ONE INCH - ONE FOOT

THREE QUARTERS INCH - ONE FOOT

ONE INCH - ONE FOOT

ONE AND ONE HALF INCHES - ONE FOOT

THREE INCHES - ONE FOOT

ONE EIGHTH INCH - ONE FOOT

ONE SIXTH INCH - ONE FOOT

ONE QUARTER INCH - ONE FOOT

ONE HALF INCH - ONE FOOT

THREE EIGHTHS INCH - ONE FOOT

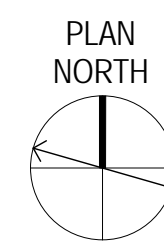
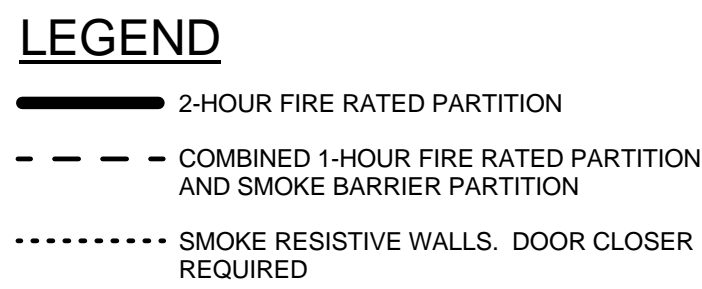
ONE INCH - ONE FOOT

THREE QUARTERS INCH - ONE FOOT

ONE INCH - ONE FOOT

ONE AND ONE HALF INCHES - ONE FOOT

THREE INCHES - ONE FOOT



REVISIONS	DATE
-----------	------



408 E. Parkcenter Blvd, Suite 205, Boise Idaho 83706

BOISE IDAHO

DWG 71 OF 126



A) **Vehicular Codes and Enduring Agreements**

- 1) AHA Program Guide PG-18 dictates that the following codes are applicable for the project:
 - a) 2012 NFPA 101 Life Safety Code
 - b) 2012 IBC (Only for design features not addressed in NFPA and 101)
 - c) 2012 NFPA National Fire Codes (not to include 5000 and 300)
 - d) OSHA Standards
 - e) VAS Seismic Design Requirements, H-18-8
 - f) National Electrical Code (NEC)
 - g) National Standard Plumbing Code (NSPC)
 - h) VAS Directives, Design Manuals, Master Specifications and other Guidance on the Technical Information Library (TIL), <http://www.dtm.vas.gov/til>
 - i) Additional standards are listed in PG-18.3 and shall be referenced for their respective application.

B) **Building Assembly Based on Building Codes (NFPA 101 references unless noted otherwise)**

- A) **Use and Occupancy Classification**
 - 1) Assembly (Theater and office) NFPA 101, Chapter 38, New Business Occupancies
 - 2) Cafeteria - NFPA 101, Chapter 13, Existing Assembly Occupancy
 - 3) Building will be protected as a Mixed Occupancy per requirements of 6.1.14.3. Only the north wing will be required to meet the stricter criteria of the Assembly Occupancy.
- B) **Construction Type Limitations (38.1.8 and 3.1.6)**
 - 1) Per table 13.1.6, using a Type V (000) construction in a building that is fully sprinklered is allowable for a single story building.
 - 2) Fire Resistance Ratings (NFPA 220, Table 4.1.1)

C) **Occupant Load:** (NFPA 101 7.3.1.2; IBC Table 1004.1.1)

Assembly (less concentrated): 1/15 NSF (NFPA)
Business Areas (offices): 1/100 GSF (NFPA)
Exams Rooms: 1/100 GSF (NFPA)
Locker Room: 1/50 NSF (IBC)
Storage: 1/300 GSF (NFPA)
Mechanical/Electrical: 1/300 GSF (IBC)

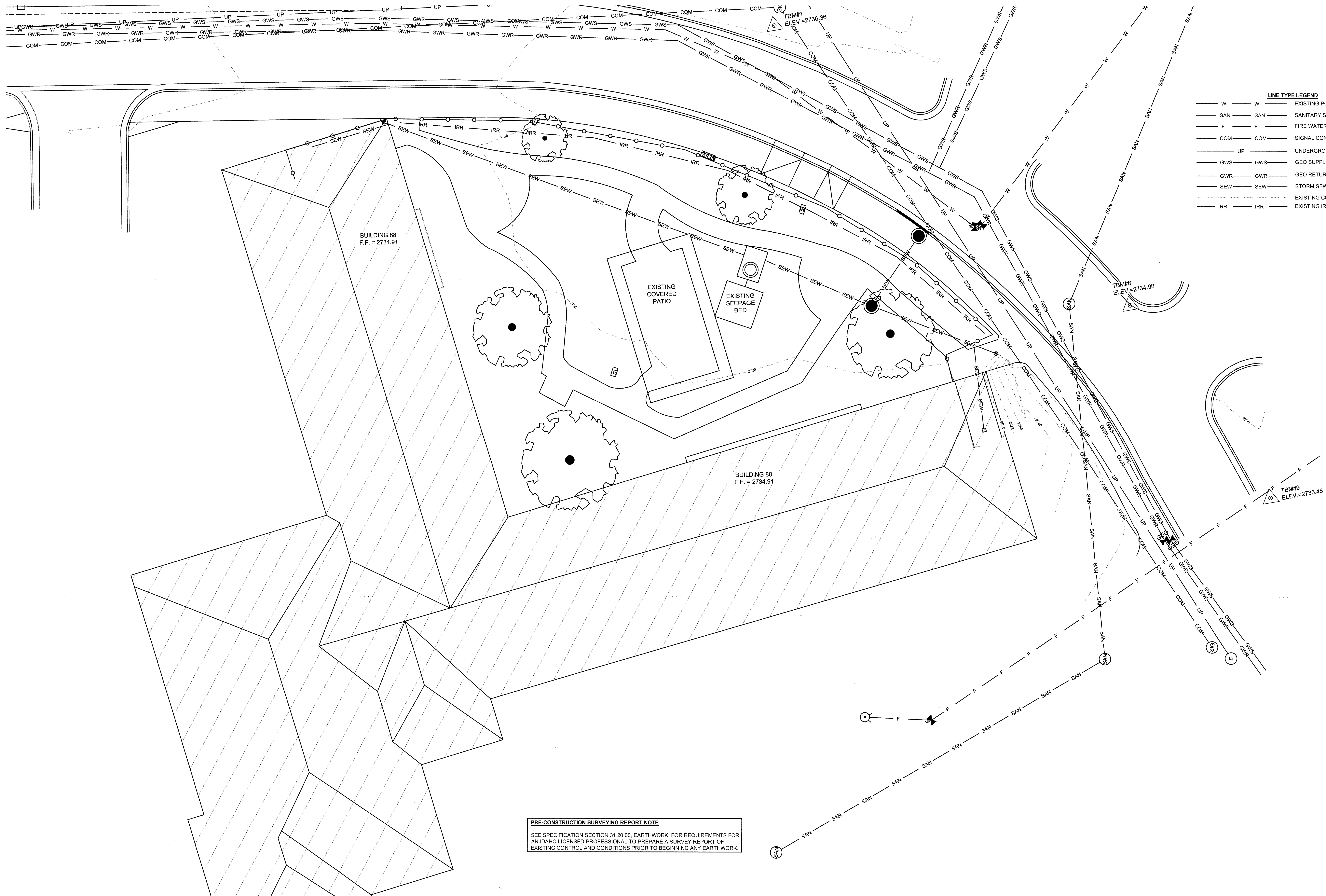
1) **Occupant Load Calculations:**

- (a) **Assembly Areas (NSP):**
 - (i) Waiting Room (seating area): 913 / 15 = 61
 - (ii) Conference Room: 312 / 15 = 21
 - (iii) Staff Lounge: 125 / 15 = 8
 - (iv) Cafeteria: 187 / 15 = 125
 - (v) Resident Lounge: 373 / 15 = 25
- (b) **Business Areas (GSF):**
 - (i) North Wing (see plan): 11
 - (ii) Central (see plan): 15
 - (iii) Reception (see plan): 1
- (c) **Exam Rooms (GSF):**
 - (i) East Wing Exam Rooms (including toilet): 5267 / 100 = 53
 - (ii) South Wing Exam Rooms (including toilets): 5500 / 100 = 56
 - (iii) PT Exam Rooms (see plan): 36
- (d) **Locker Room Areas (NSP)**
 - (i) Locker Room: 169 / 50 = 4
- (e) **Storage Areas (GSF):**
 - (i) Trash: 51 / 500 = 1
 - (ii) Closet: 30 / 500 = 1
 - (iii) Storage: 152 / 500 = 1
 - (iv) Future Hall: 400 / 500 = 1
- (f) **Mechanical/Electrical (GSF):**
 - (i) Mechanical: 1492 / 300 = 5
 - (ii) Electrical Room: 204 / 300 = 1
 - (iii) Telephone: 42 / 300 = 1
 - (iv) Electrical Room: 37 / 300 = 1
 - (v) Telecom: 36 / 300 = 1
 - (vi) Telecom: 44 / 300 = 1

(g) **TOTAL OCCUPANT LOAD = 432**

- D Means of Egress Components**
- (a) No stairs or vertical circulation are provided. Building is a single story construction. Exits are not required.
 - (b) Area of Refuge are not required since all exits are at grade.
 - (c) Door openings in egress egress shall not be less than 32 inches (7.12 x 3.2) feet.
 - (d) Any door or median door shall be capable of opening in a clear path of travel of 100' or more persons shall be permitted to be provided with a latch or lock if it is panic hardware.
 - (e) Capacity of Means of Egress (13.2.3.1 & 3.2.4.1) Occupant for Level Components & Ramps Minimum required egress width: 0.2' Occupant for Level Components & Ramps Highest occupied load at exit: 80 occupants
Required: 0.2' x 89 occ. = 18" (32" minimum) Provided: 36" (passes)
Corridors and passageways shall not be less than 44 inches (38.2.5.2.1)
 - (f) Not less than two exits shall be provided (13.2.4.2) and shall be located at a distance from one another not less than the required length of the maximum overall diagonal dimension of the area to be served (7.5.1.3).
 - (g) Dead end corridors are limited to 20 feet in Assembly egress areas (13.2.5.1.3) and 50 feet in all other egress areas (38.2.5.2.1).
 - (h) Common path of travel shall not exceed 75 feet when serving less than 50 occupants. Otherwise it is limited to 20 feet (13.2.5.1.2).
 - (i) Travel distance to exit shall not exceed 250 feet in Assembly egress (13.2.6.2.1) and 300 feet in Business egress (38.2.6.3).
 - (j) Means of egress shall be provided with signs (13.2.10.2).
- E) Protection**
- (a) Hazardous areas for sprinkler protection shall be separated by smoke partitions and automatic closing doors (8.7.1). Areas requiring separation include (38.3.2.1 & 13.3.2.1.1):
 - (i) Areas used for general storage.
 - (ii) Boiler or furnace rooms.
 - (iii) Large transformers
 - (b) Smoke Partitions (8.4)
 - (i) Fire resistance: Smoke partitions are not required to have a fire-resistance rating but be constructed to limit the free passage of smoke.
Continuity: They shall extend from the floor assembly to the underside of the roof deck or to the underside of the floor assembly above, provided the ceiling forms a continuous membrane and a smoke-tight joint between the two is provided. The space above the ceiling is not allowed to be used as a plenum.
 - (ii) Door Protection Rating: No rating requirement. Doors shall not contain louvers and shall be self-closing.
 - (c) Medical gas storage shall be protected in accordance with NFPA 99.
- F) Finishes**
- (a) Assembly occupancies with ceiling finish materials shall be permitted to be Class A or B in all corridors and lobbies and 13.3.3.2.1, Class A or B shall be allowed in all other areas (13.3.3.3).
Classes shall be based on ASTM E 84 or ANSI C 723.
 - (b) Interior floor finish in exit enclosure shall be Class I or Class II (38.3.3.3).
- G) Fire Protection Systems**
- (a) Assembly occupancies with occupancy loads of more than 300 shall be provided with an approved fire alarm system (13.3.1.4.2).
 - (i) Assembly occupancies that are a part of a multiple occupancy protected as a mixed occupancy shall be permitted to be served by a common fire alarm system (13.3.1.4.2).
 - (b) Although not required by code, fire sprinklers will be provided throughout by an automatic sprinkler system.
 - (c) Fire extinguishers shall be provided (38.3.5). Designated employees shall be periodically instructed in the use of portable fire extinguishers.
- H) Corridors**
- (a) Corridor/halls are not required to be separated from use areas since space is occupied by a single tenant and building is protected with a sprinkler system (38.3.6.1).
- I) Occupant Load Posting**
- (a) Even though containing an assembly occupancy and not having fixed seats shall have the occupant load of the room posted in an conspicuous place near the main exit from the room.
- J) Subdivision of Building Spaces (38.3.7)**
- (a) No special requirements.
- K) Plumbing Codes (IBC Table 2902.1)**
- (a) Fixture Requirements for 432 occupants:
 - (i) Water Closets: 10 required, 32 provided
 - (ii) Lavatories: 7 required, 69 provided
 - (iii) Showers: 0 required, 5 provided
 - (iv) Drinking Fountains: 5 required, 4 provided
 - (v) Service Sink: 1 required, 3 provided

THREE INCHES = ONE FOOT
ONE AND ONE HALF INCHES = ONE FOOT
ONE INCH = ONE FOOT
THREE QUARTERS INCH = ONE FOOT
ONE HALF INCH = ONE FOOT
THREE EIGHTHS INCH = ONE FOOT
ONE QUARTER INCH = ONE FOOT
ONE EIGHTH INCH = ONE FOOT



REVISIONS	DATE

B & A Engineers, Inc.
Consulting Engineers, Surveyors & Planners
5505 West Franklin Road Boise, ID 83705
Voice: 208.343.3381 Fax: 208.342.5792
Web: <http://www.baengineers.com>

ZGA ARCHITECTS & PLANNERS, CHARTERED

408 E. Parkcenter Blvd., Suite 205 | Boise, Idaho 83706 | t: (208) 345.8872 | f: (208) 343.7162 | www.zga.com

CAD FILE NAME:
531-322_C0.1_B.dwg

XREF FILE NAME:
xVAbord.dwg

DRAWING TITLE
**SITE TOPOGRAPHY
FOR BUILDING 88**

APPROVED: CHIEF OF FACILITY MANAGEMENT SERVICE

APPROVED: MEDICAL CENTER DIRECTOR

PROJECT TITLE
**VAMC BUILDING 88
VOLUME B**

BUILDING NUMBER
88

CHECKED
JDC

DRAWN
CAA

LOCATION
BOISE, IDAHO

DATE
05/13/2016

PROJECT NO.
531-322

DRAWING NO.
C0.1

DWG 73 OF 126

FOR CONSTRUCTION

W

DEPARTMENT OF VETERANS AFFAIRS

THREE INCHES = ONE FOOT
ONE AND ONE HALF INCHES = ONE FOOT
ONE INCH = ONE FOOT
THREE QUARTERS INCH = ONE FOOT
ONE HALF INCH = ONE FOOT
THREE EIGHTHS INCH = ONE FOOT
ONE QUARTER INCH = ONE FOOT
ONE EIGHTH INCH = ONE FOOT

BUILDING 88 DEMOLITION KEYNOTES

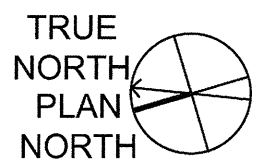
- 1 EXISTING SIDEWALK - REMOVE IN BASE BID
- 2 EXISTING TREE - REMOVE IN BASE BID
- 3 EXISTING SEEPAGE BED - REMOVE IN BASE BID - SEE SEEPAGE BED DEMO NOTE THIS PAGE
- 4 EXISTING SEDIMENT TANK - REMOVE IN BASE BID
- 5 EXISTING CONCRETE PAD AND GAZEBO - REMOVE IN BASE BID
- 6 EXISTING SIDEWALK - RETAIN AND PROTECT
- 7 EXISTING STORM SEWER PIPE - REMOVE IN BASE BID - SEE NOTE ON PLAN BELOW
- 8 EXISTING STORM SEWER PIPE - RETAIN AND PROTECT
- 9 ELECTRICAL BOX - REMOVE ELECTRICAL PANEL 88. REMOVE CONDUCTORS AND RACEWAY BACK TO PANEL. NLC (142-88). REMOVE IN BASE BID
- 10 EXISTING FENCE - REMOVE IN BASE BID
- 11 EXISTING SIGN - TO BE REMOVED IN BASE BID AND DELIVERED TO COR
- 12 EXISTING METAL RAILING AROUND PEDESTRIAN RAMP - REMOVE PATCH COLUMN AND ALL ATTACHMENT POINTS - IF ALTERNATE 3 SELECTED
- 13 EXISTING PRESSURE IRRIGATION - REMOVE FOR REPLACEMENT IN BASE BID. SEE LANDSCAPE SHEETS L2.2 & L3.0
- 14 EXISTING MOW STRIP - RETAIN AND PROTECT
- 15 EXISTING TREE - RETAIN AND PROTECT
- 16 EXISTING STORM SEWER MANHOLE - RETAIN AND PROTECT
- 17 SNAKE / CLEAN EXISTING DRAIN LINE
- 18 EXISTING CURB OR CURB AND GUTTER - REMOVE IN BASE BID. SEE SHEET C1.1
- 19 REMOVE EXISTING SIDEWALK IF ALTERNATE 3 SELECTED. OTHERWISE RETAIN AND PROTECT
- 20 EXISTING MOW STRIP - REMOVE ONLY IF ALTERNATE 1 SELECTED. OTHERWISE RETAIN AND PROTECT

GENERAL PLANT MATERIAL DEMO NOTE:
DEMO OTHER PLANT MATERIALS - SEE LANDSCAPE SHEET L2.1

SEEPAGE BED DEMO NOTE:
EXCAVATE AND REMOVE FROM THE SITE THE EXISTING SEEPAGE BED. ITS MEASUREMENTS ARE EXPECTED TO BE 8 FEET WIDE BY 8 FEET LONG AND 8 FEET DEEP. THE BOTTOM OF THE BED IS APPROXIMATELY 9.5 FEET BELOW EXISTING GROUND WITH A 10 FOOT BY 10 FOOT BY 6 INCH CONCRETE CAP ON TOP OF THE BED. PRIOR TO REMOVING THE EXCAVATED MATERIAL FROM THE SITE, THE MATERIAL MAY NEED TO BE TEMPORARILY STOCKPILED IF THE MATERIAL IS TOO WET FOR REMOVAL FROM THE SITE AND WOULD RESULT IN LEAKAGE DURING TRANSPORT FROM THE SITE.

GENERAL CONSTRUCTION NOTE
ALL EXISTING IMPROVEMENTS NOT INDICATED FOR REMOVAL OR RELOCATION DAMAGED BY CONSTRUCTION, SHALL BE REPLACED TO THE CONDITION PRIOR TO CONSTRUCTION

SITE DEMOLITION - BUILDING 88



REVISIONS	DATE

B & A Engineers, Inc.
Consulting Engineers, Surveyors & Planners
5505 West Franklin Road Boise, ID 83705
Voice: 208.343.3381 Fax: 208.342.5792
Web: <http://www.baengineers.com>

ZGA ARCHITECTS & PLANNERS, CHARTERED

408 E. Parkcenter Blvd., Suite 205 | Boise, Idaho 83706 | t: (208) 345.8872 | f: (208) 343.7162 | www.zga.com

CAD FILE NAME:
531-322_C1.1_B.dwg

XREF FILE NAME:
xVAbord.dwg

DRAWING TITLE
**SITE DEMOLITION
FOR BUILDING 88 SITE**

APPROVED: CHIEF OF FACILITY MANAGEMENT SERVICE

APPROVED: MEDICAL CENTER DIRECTOR

PROJECT TITLE
**VAMC PARKING GARAGE
VOLUME B**

BUILDING NUMBER
88

CHECKED
JDC

DRAWN
CAA

LOCATION
BOISE, IDAHO

DATE
05/13/2016

PROJECT NO.
531-322

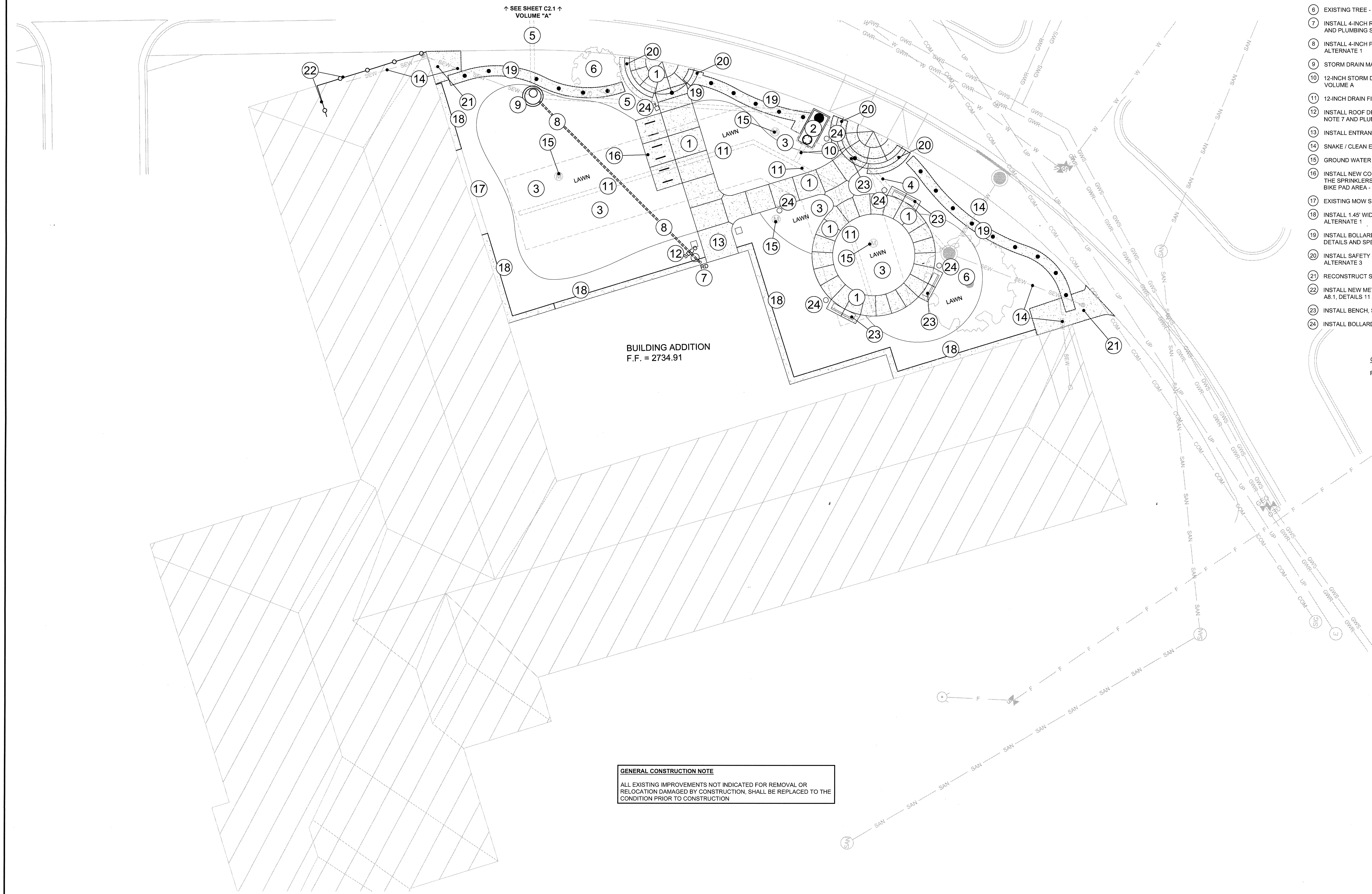
DRAWING NO.
C1.1

DWG 74 OF 126

FOR CONSTRUCTION

DEPARTMENT OF VETERANS AFFAIRS

ONE EIGHTH INCH = ONE FOOT
ONE QUARTER INCH = ONE FOOT
THREE EIGHTHS INCH = ONE FOOT
ONE HALF INCH = ONE FOOT
THREE QUARTERS INCH = ONE FOOT
ONE INCH = ONE FOOT
ONE AND ONE HALF INCHES = ONE FOOT
THREE INCHES = ONE FOOT



GENERAL CONSTRUCTION NOTE
ALL EXISTING IMPROVEMENTS NOT INDICATED FOR REMOVAL OR RELOCATION DAMAGED BY CONSTRUCTION, SHALL BE REPLACED TO THE CONDITION PRIOR TO CONSTRUCTION

BUILDING 88 IMPROVEMENT KEYNOTES

- 1 CONSTRUCT SIDEWALK PER DETAILS 1 AND 4, SHEET C4.0 - ALTERNATE 3
- 2 1,000 GALLON CONCRETE SEDIMENT TANK - INSTALLED IN BASE BID, SEE VOLUME A
- 3 SEEPAGE BED - INSTALLED IN BASE BID, SEE VOLUME A
- 4 10-INCH PVC PIPE FROM EXISTING STORM SEWER TO NEW SEDIMENT TANK - INSTALLED IN BASE BID, SEE VOLUME A
- 5 8-INCH PVC PIPE FROM PARKING GARAGE STORM DRAIN TO SEDIMENT TANK - INSTALLED IN BASE BID, SEE VOLUME A
- 6 EXISTING TREE - RETAIN AND PROTECT
- 7 INSTALL 4-INCH ROOF DRAIN PER DETAIL 2, SHEET C4.0, SEE ARCHITECTURAL SHEET A2.3, KEY NOTE 7 AND PLUMBING SHEET P1.0, DETAIL 1 FOR MORE INFORMATION - ALTERNATE 1
- 8 INSTALL 4-INCH PVC ROOF DRAIN PIPE INTO EXISTING MAN HOLE, SEE SHEET C3.1 FOR GRADES - ALTERNATE 1
- 9 STORM DRAIN MANHOLE - INSTALLED IN BASE BID, SEE VOLUME A
- 10 12-INCH STORM DRAIN PIPE FROM SEDIMENT TANK TO DRAIN FIELD - INSTALLED IN BASE BID, SEE VOLUME A
- 11 12-INCH DRAIN FIELD LATERALS - INSTALLED IN BASE BID, SEE VOLUME A
- 12 INSTALL ROOF DRAIN CLEAN-OUT PER DETAIL 5, SHEET C4.0, SEE ARCHITECTURAL SHEET A2.3, KEY NOTE 7 AND PLUMBING SHEET P1.0, DETAIL 1 FOR MORE INFORMATION - ALTERNATE 1
- 13 INSTALL ENTRANCE CONCRETE PAD, PER DETAILS 1 AND 4, SHEET C4.0 - ALTERNATE 1
- 14 SNAKE / CLEAN EXISTING DRAIN LINE - COMPLETED IN BASE BID, SEE VOLUME A
- 15 GROUND WATER OBSERVATION WELL - INSTALLED IN BASE BID, SEE VOLUME A
- 16 INSTALL NEW CONCRETE PAD AND BIKE RACK. SEE DETAIL 3, SHEET C4.0. IN THE NEW BIKE PAD AREA, THE SPRINKLERS SHOULD BE LOCATED IN SUCH A WAY AS TO ELIMINATE ANY OVER SPRAY ONTO THE BIKE PAD AREA - ALTERNATE 3
- 17 EXISTING MOW STRIP - RETAIN AND PROTECT
- 18 INSTALL 1.45' WIDE MOW STRIP, MATCH EXISTING MOW STRIP, SEE SHEET C3.1 FOR GRADES - ALTERNATE 1
- 19 INSTALL BOLLARDS AND BOLLARD FOUNDATIONS. SEE STRUCTURAL SHEET S5.1, DETAILS 14 & 15 FOR DETAILS AND SPECIFICATIONS - ALTERNATE 3
- 20 INSTALL SAFETY WALLS, SEE LANDSCAPE SHEET L3.0, DETAIL 1 FOR DETAILS AND SPECIFICATIONS - ALTERNATE 3
- 21 RECONSTRUCT SIDEWALK REMOVED IN ALTERNATE 3
- 22 INSTALL NEW METAL RAILING, SEE ARCHITECTURAL SHEET G3.0, DETAIL 3 AND ARCHITECTURAL SHEET A8.1, DETAILS 11 AND 12 - ALTERNATE 3
- 23 INSTALL BENCH, SEE LANDSCAPE SHEET L2.1, NOTE 3 - ALTERNATE 3
- 24 INSTALL BOLLARD LIGHT OR POLE LIGHT, SEE ELECTRICAL E2.1L - ALTERNATE 3

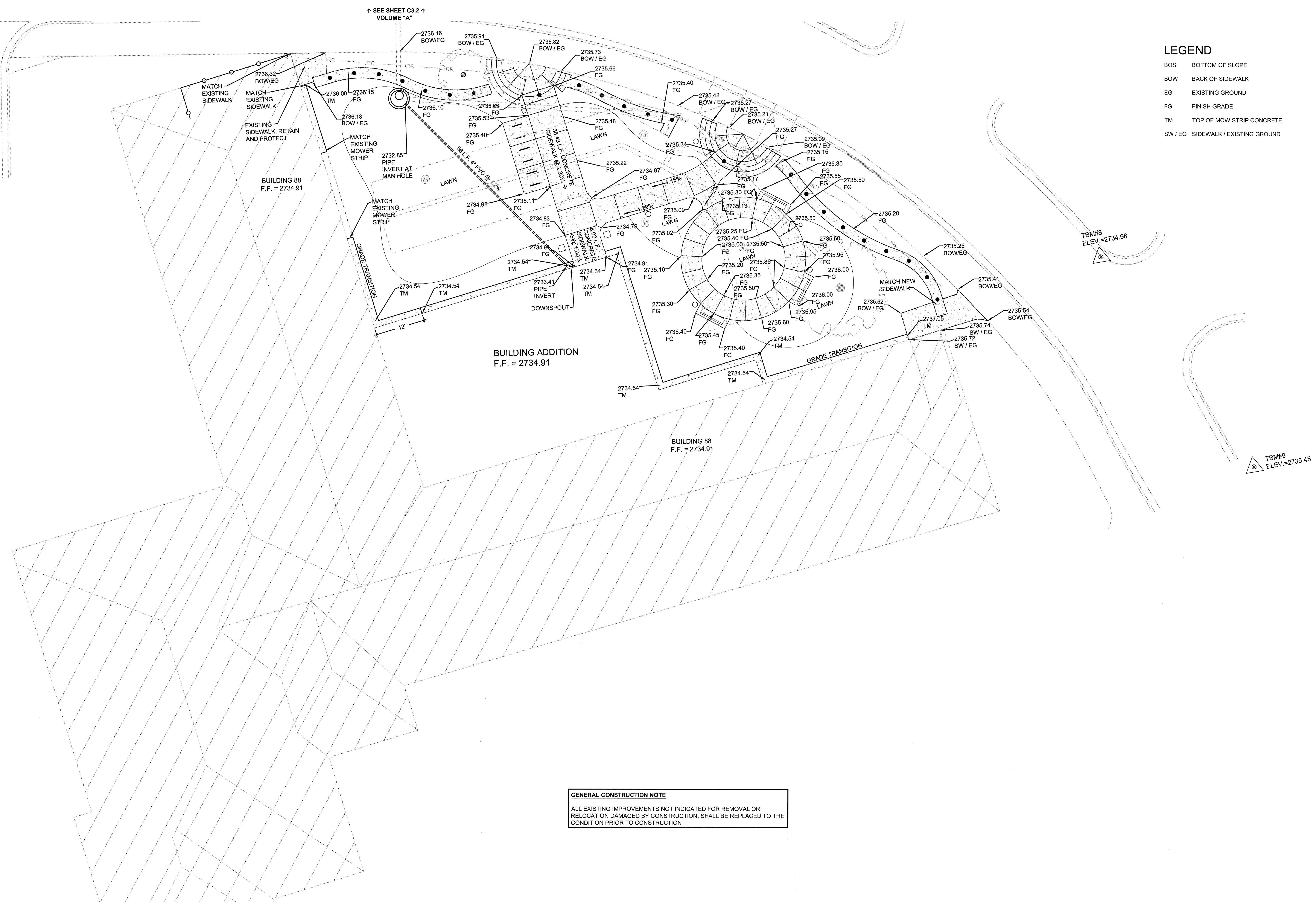
GENERAL LANDSCAPE NOTE:
FOR INFORMATION ON LANDSCAPING, SEE LANDSCAPE SHEETS L2.1, L2.2 & L3.0

SITE IMPROVEMENTS - BUILDING 88

1"=10'-0"



 B & A Engineers, Inc. Consulting Engineers, Surveyors & Planners 5505 West Franklin Road Boise, ID 83705 Voice: 208.343.3381 Fax: 208.342.5792 Web: http://www.baengineers.com		ZGA ARCHITECTS & PLANNERS, CHARTERED 408 E. Parkcenter Blvd., Suite 205 Boise, Idaho 83706 t: (208) 345.8872 f: (208) 343.7162 www.zga.com	CAD FILE NAME: 531-322_C2.1_B.dwg XREF FILE NAME: xVAbord.dwg	DRAWING TITLE SITE IMPROVEMENTS FOR BUILDING 88		PROJECT TITLE VAMC BUILDING 88 VOLUME B		DATE 05/13/2016	 DEPARTMENT OF VETERANS AFFAIRS
				APPROVED: CHIEF OF FACILITY MANAGEMENT SERVICE	BUILDING NUMBER 88	CHECKED JDC	DRAWN CAA	DRAWING NO. C2.1	
APPROVED: MEDICAL CENTER DIRECTOR				LOCATION BOISE, IDAHO		DWG 75 OF 126			



BOS	BOTTOM OF SLOPE
BOW	BACK OF SIDEWALK
EG	EXISTING GROUND
FG	FINISH GRADE
TM	TOP OF MOW STRIP CONCRETE
SW / EG	SIDEWALK / EXISTING GROUND

BUILDING 88
F.F. = 2734.91

TBM#9
ELEV.=2735.45

GENERAL CONSTRUCTION NOTE

ALL EXISTING IMPROVEMENTS NOT INDICATED FOR REMOVAL OR RELOCATION DAMAGED BY CONSTRUCTION, SHALL BE REPLACED TO THE CONDITION PRIOR TO CONSTRUCTION

TRUE
NORTH
PLAN
NORTH

CAD FILE NAME:
531-322_C3.1_B.dwg

XREF FILE NAME:
xVAbord.dwg

DRAWING TITLE
SITE GRADING
AND DRAINAGE
FOR BUILDING 88

APPROVED: CHIEF OF FACILITY MANAGEMENT SERVICE

APPROVED: MEDICAL CENTER DIRECTOR

PROJECT TITLE	VAMC BUILDING 88 VOLUME B
---------------	------------------------------

	BUILDING NUMBER 88
--	-----------------------

LOCATION	BOISE, IDAHO
----------	--------------

DATE	05/13/2016
------	------------

PROJECT NO.
531-322

	DRAWING NO.

	50%
--	-----

FOR CONSTRUCTION



DEPARTMENT OF VETERANS AFFAIRS

NOT TO SCALE

NOT TO SCALE

3 STANDARD BIKE RACK DETAIL

NOT TO SCALE

NOT TO SCALE

NOT TO SCALE

- 5 STANDARD 4" CLEAN-OUT DETAIL

