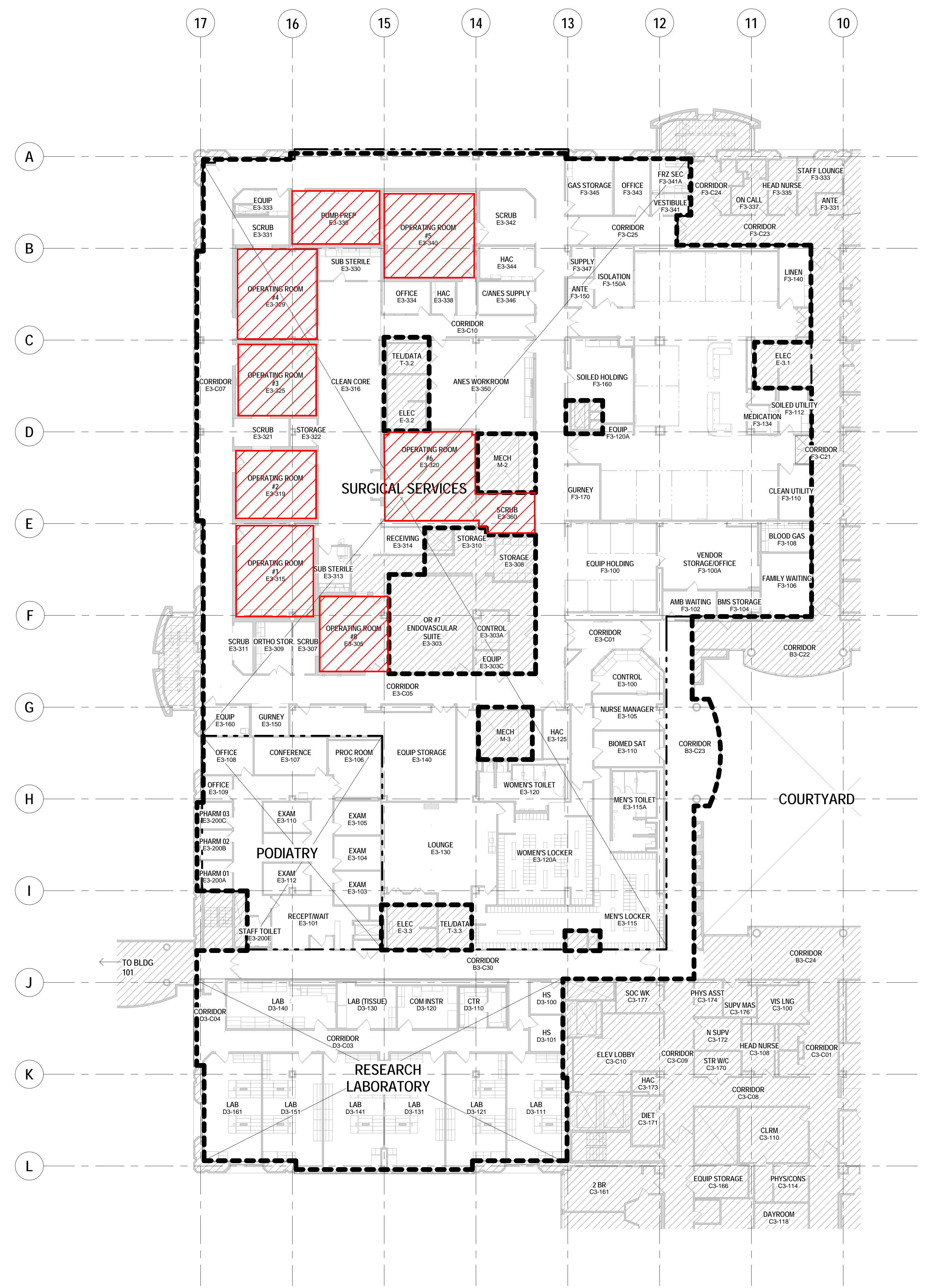


three inches = one foot
one and one half inches = one foot
one inch = one foot
three quarters inch = one foot
one half inch = one foot
three eighths inch = one foot
one quarter inch = one foot
one eighth inch = one foot



LEGEND

ORS REQUIRING FINISH FLOORING AND COVERED BASE REPLACEMENT. FOR FLOORING DIMENSIONS SEE E2/EXHIBIT 1 DRAWING. FINISH FLOORING TRANSITION TO OCCUR MID-POINT AT DOOR THRESHOLD. ALL FLOOR MOUNTED DOOR HARDWARE (LATCH STRIKE PLATE AND MAGNETIC DOOR/WALL STOP) TO BE REPLACED TO MATCH EXISTING. PAINT DOOR FRAMES IN ROOMS TO DOOR STOP TO MATCH EXISTING COLOR AND SHEEN.

CAP STRIP PER 09 65 16 SPECIFICATION

FINISH FLOORING PER DRAWING AND SPECIFICATIONS

MANUF. STANDARD COVE FILLER

E2 INTEGRAL COVE BASE
DETAIL SECTION
NOT TO SCALE

5 THIRD FLOOR EXISTING PLAN
SCALE: 1/16" = 1'-0"

No.		Submittal / Revision		Date	

Key Plan

Drawing Title THIRD FLOOR EXISTING PLAN REPLACE OPERATING ROOM FLOORING AND COVERED BASE		Project Title CORRECT OPERATING ROOM FINISH FLOORING AND COVERED BASE		VA Project Number 640-17-101	
Approved: Project Director		Location 3801 Miranda Avenue, Palo Alto, CA 94304		Building Number 100	
Approver VAPAHCS PLANNING AND ENGINEERING		Date 10/28/16	Checked KS	Drawn MS	Drawing Number Exhibit 1

Office of
Construction
and Facilities
Management

Department of
Veterans Affairs