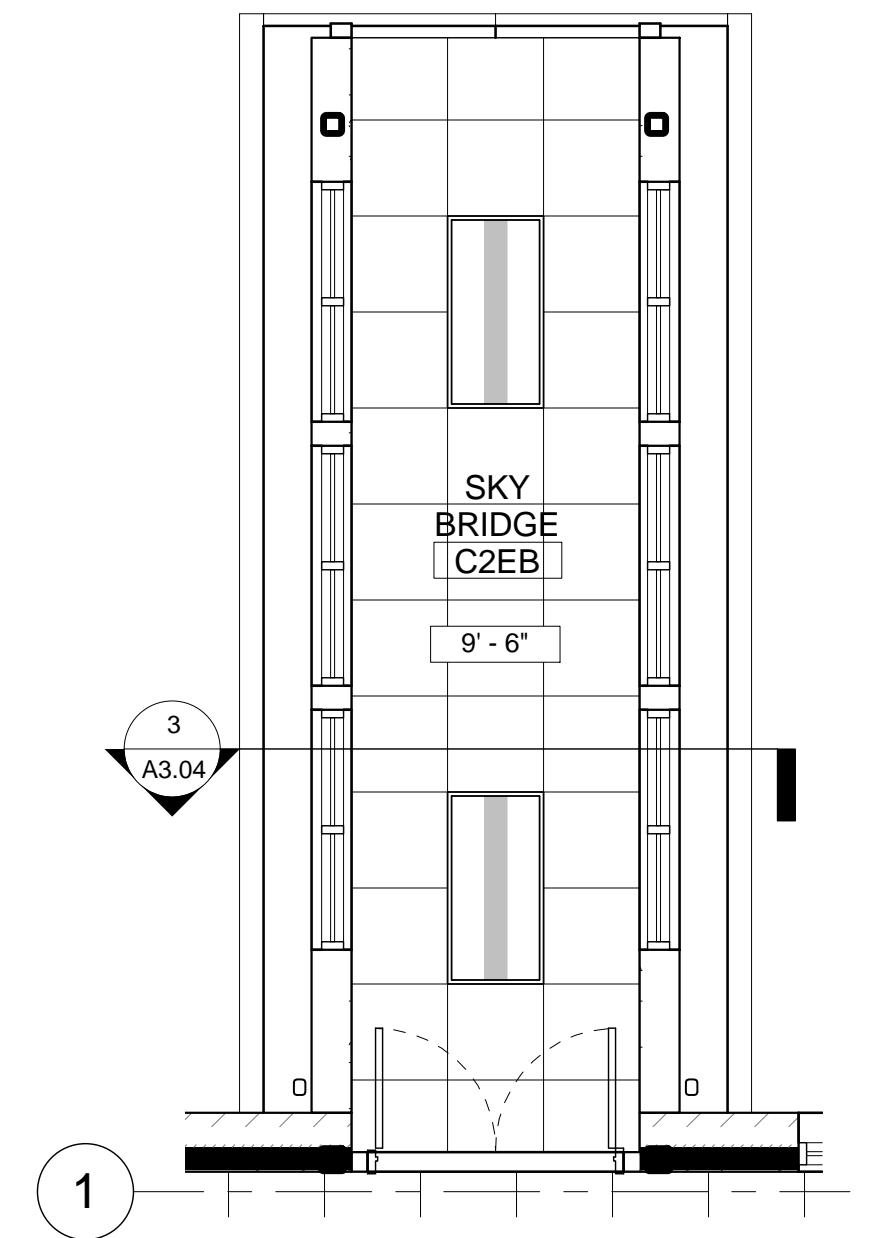


1 Reflected Ceiling Plan: Second Floor
1/4" = 1'-0"



2 Reflected Ceiling Plan: Skybridge
1/4" = 1'-0"

Reflected Ceiling Plan General Notes:

1. Unless otherwise noted, all ceiling shall be 9'-0" A.F.F.
2. See plans for all ceiling height call outs.
3. See mechanical, electrical, plumbing, sprinkler drawings for location of fixtures and equipment.
4. Install fire rated covers over all lights which penetrate rated ceilings. Cover rating shall match labeled ceiling rating.
5. HVAC U.L. Listed combination smoke/fire dampers shall be used at all duct penetrations where ductwork serves exit enclosure. See mechanical general notes.
6. See Fire Life Safety and Mechanical Drawings for location where rated walls occur under structural beams with pass through openings. Provide shutoff in beam openings to match rating of wall below.
7. Center ceiling grid within room, unless otherwise noted.

Reflected Ceiling Plan Legend:

- Suspended 5/8" Type "X" gypsum board ceiling.
- Suspended wood appearance ceiling.
- Suspended acoustical ceiling. See 3/A5.51 for typ. seismic requirements. See Room Finish Schedule for type.
- Mechanical duct/outlet (return or supply) and other equipment - See Mechanical drawings.
- Electrical fixtures - See Electrical drawings for fixture types.
- Task light or light in casework below. See electrical.
- Window roller shade assembly.
- CCTR - Curtain Track - See Detail XX/A9.5x.
- Security Camera, provide data connection.
- Ceiling Height.
- Seismic Joint.
- Photo electric smoke detector. See Electrical.
- Speaker. See Electrical.
- Exit sign. See Electrical.
- Wireless Access Point (WAP).

Reflected Ceiling Plan Key Notes:

- 1 Sunshade.
- 2 Seismic expansion joint.
- 3 Acoustic ceiling cloud.
- 4 Cove Lighting. See Electrical.

Addendum 01	06.24.2015
Revisions	Date



PETERSEN KOLBERG & ASSOCIATES
ARCHITECTS/PLANNERS
6969 SW Hampton Street
Portland, OR 97223
phone: 503-968-6900
fax: 503-968-6860
www.pkaarchitects.com



DEPARTMENT OF VETERANS AFFAIRS
SOUTHERN OREGON REHABILITATION
CENTER & CLINICS
8495 Crater Lake Highway, White City, Oregon 97503-3012

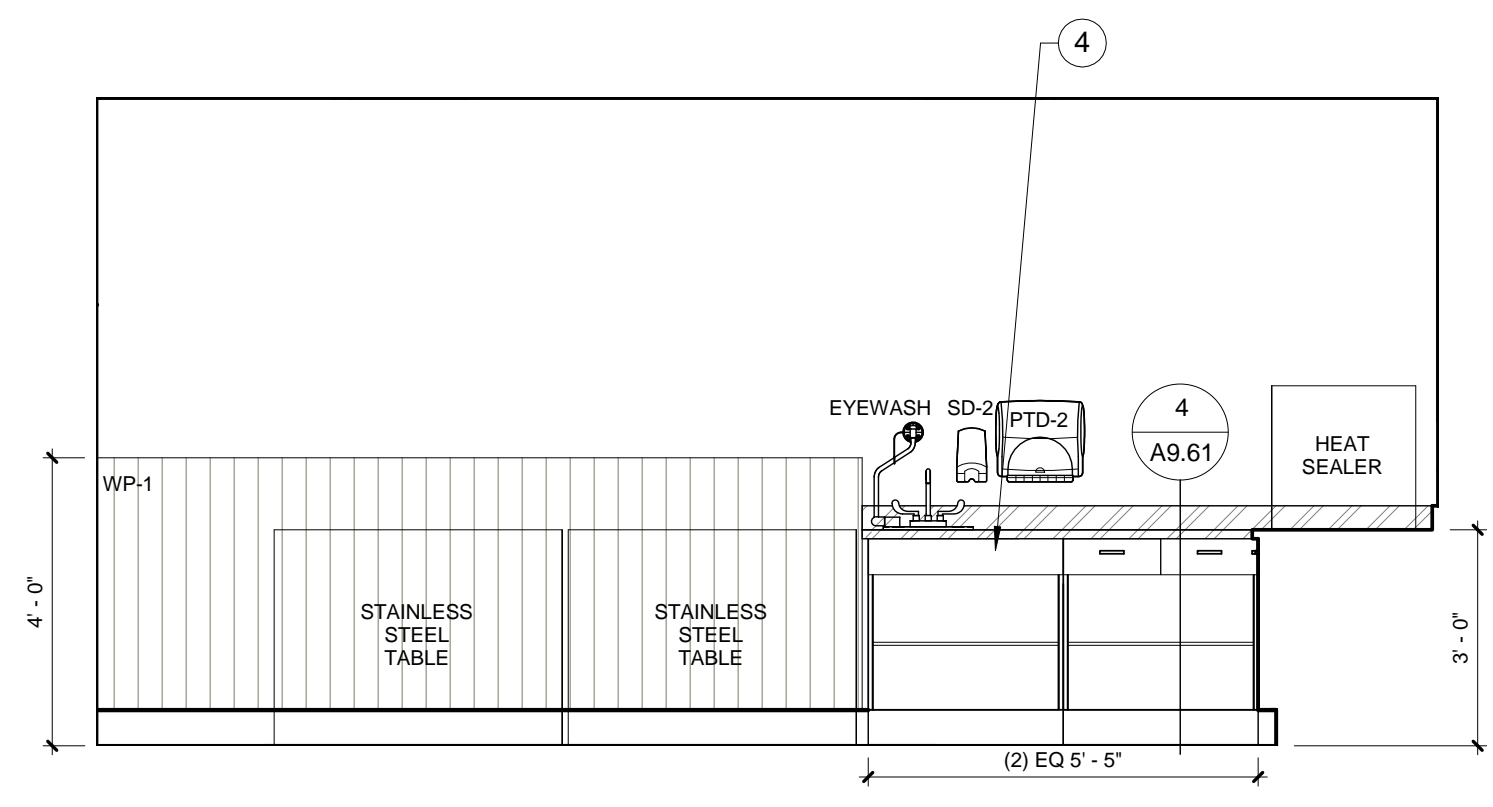
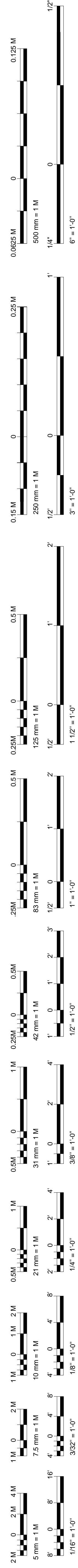
Drawing Title Second Floor RCP Final Set				
Approved: Proj Eng	Approved: Infect Cont	Approved: Chief P&O	Approved: Chief M&R	Approved: Safety Mgr.
Approved: Service Chief	Approved: Chief Facilities Mgmt	Approved: VAMC Director		

SPECIALTY CARE BUILDING - 201B		
Building No. Building 201B	Chkd By/Proj Mgr Author	Drawn By Author
Location LOCATION		

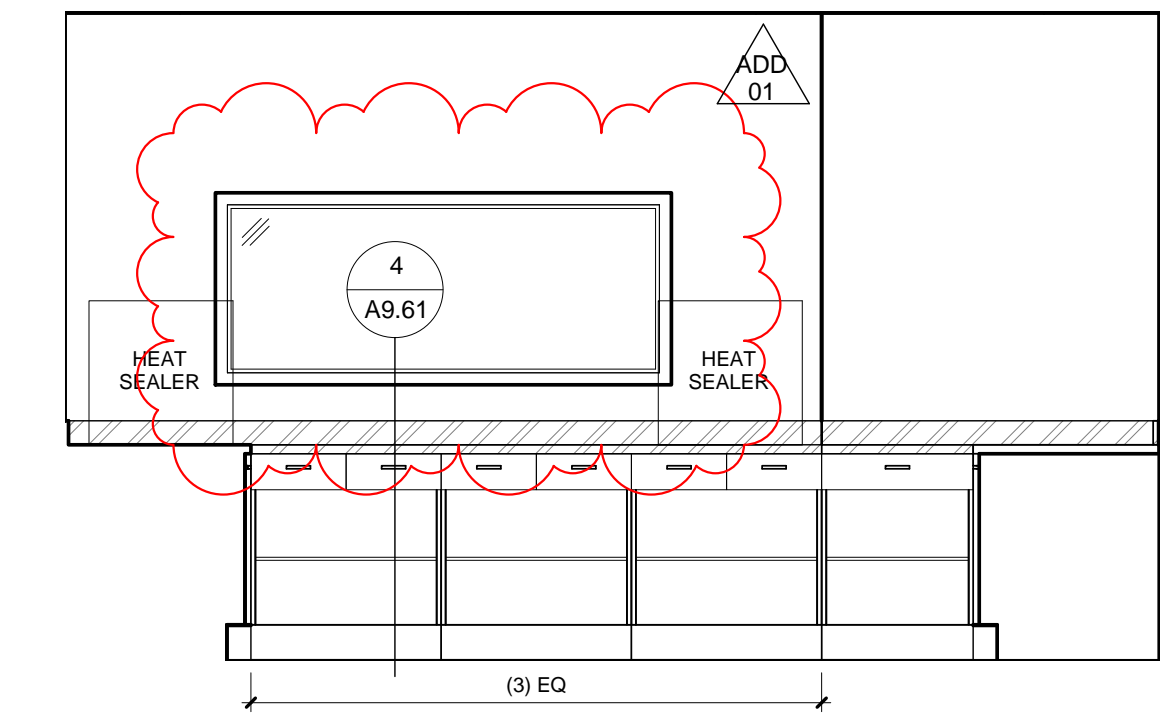
Date 11/27/2015
Project No. 131207
Drawing No. A5.20
Dwg. of

U.S. DEPARTMENT OF
VETERANS AFFAIRS

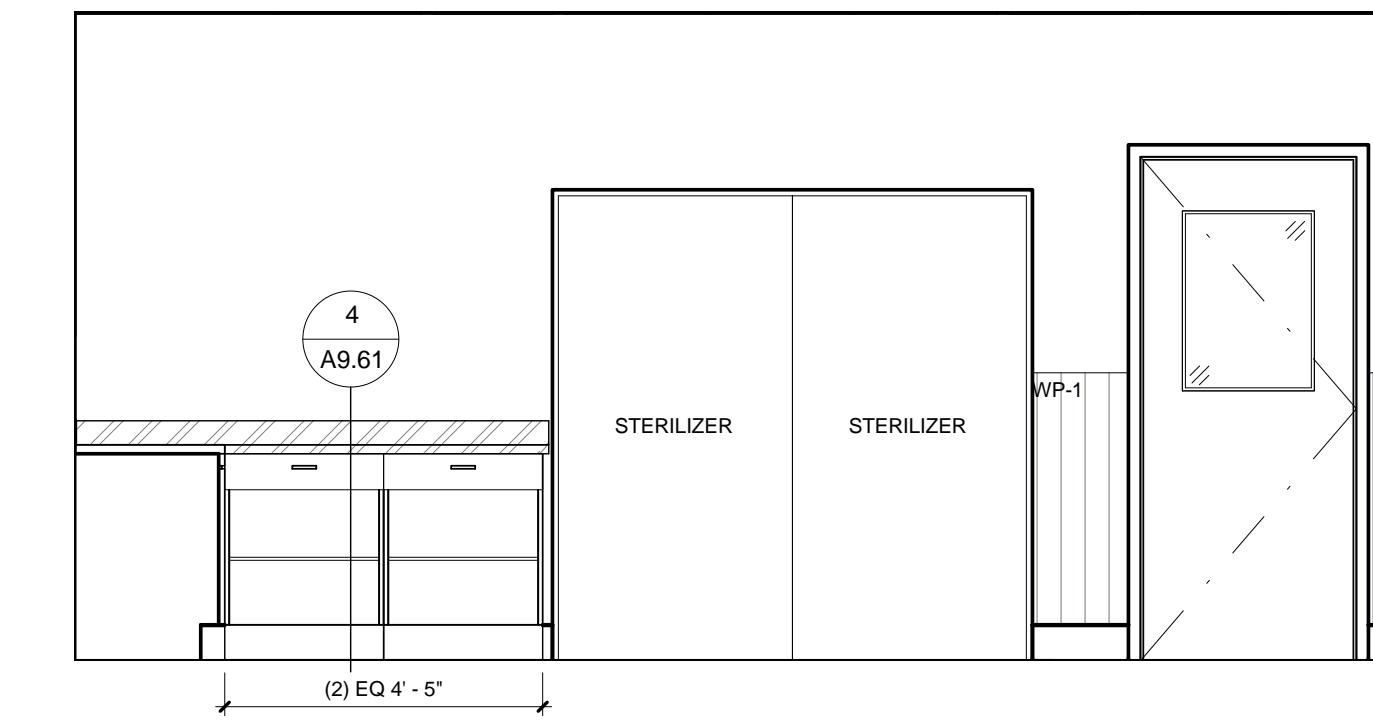




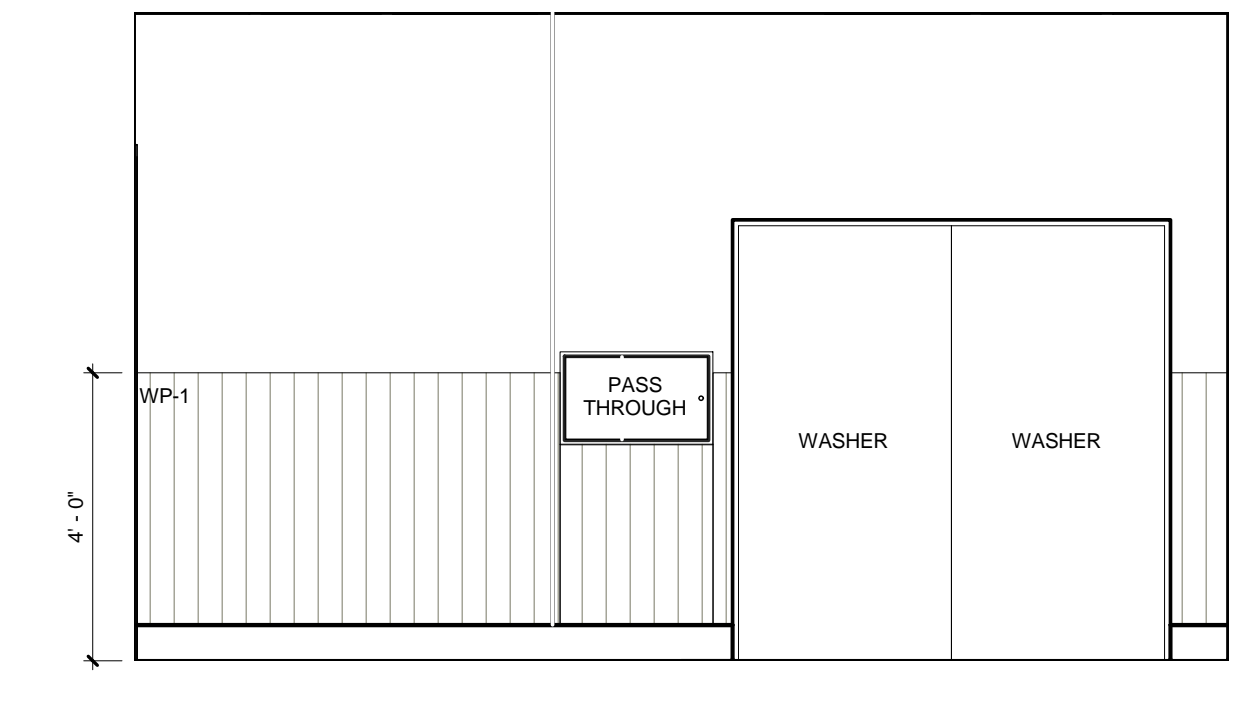
1 PREP/STERILIZATION 223 N
A6.06 3/8" = 1'-0"



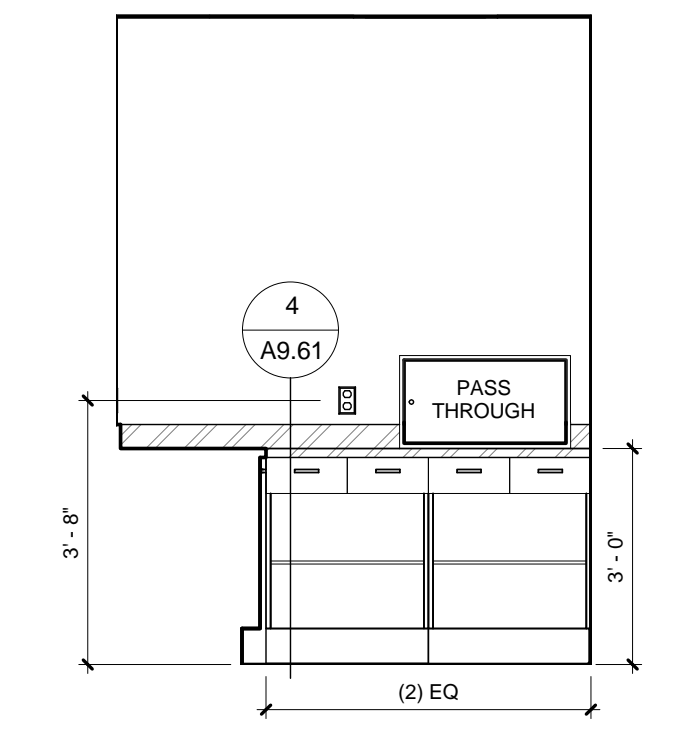
2 PREP/STERILIZATION 223 E
A6.06 3/8" = 1'-0"



3 PREP/STERILIZATION 223 S
A6.06 3/8" = 1'-0"



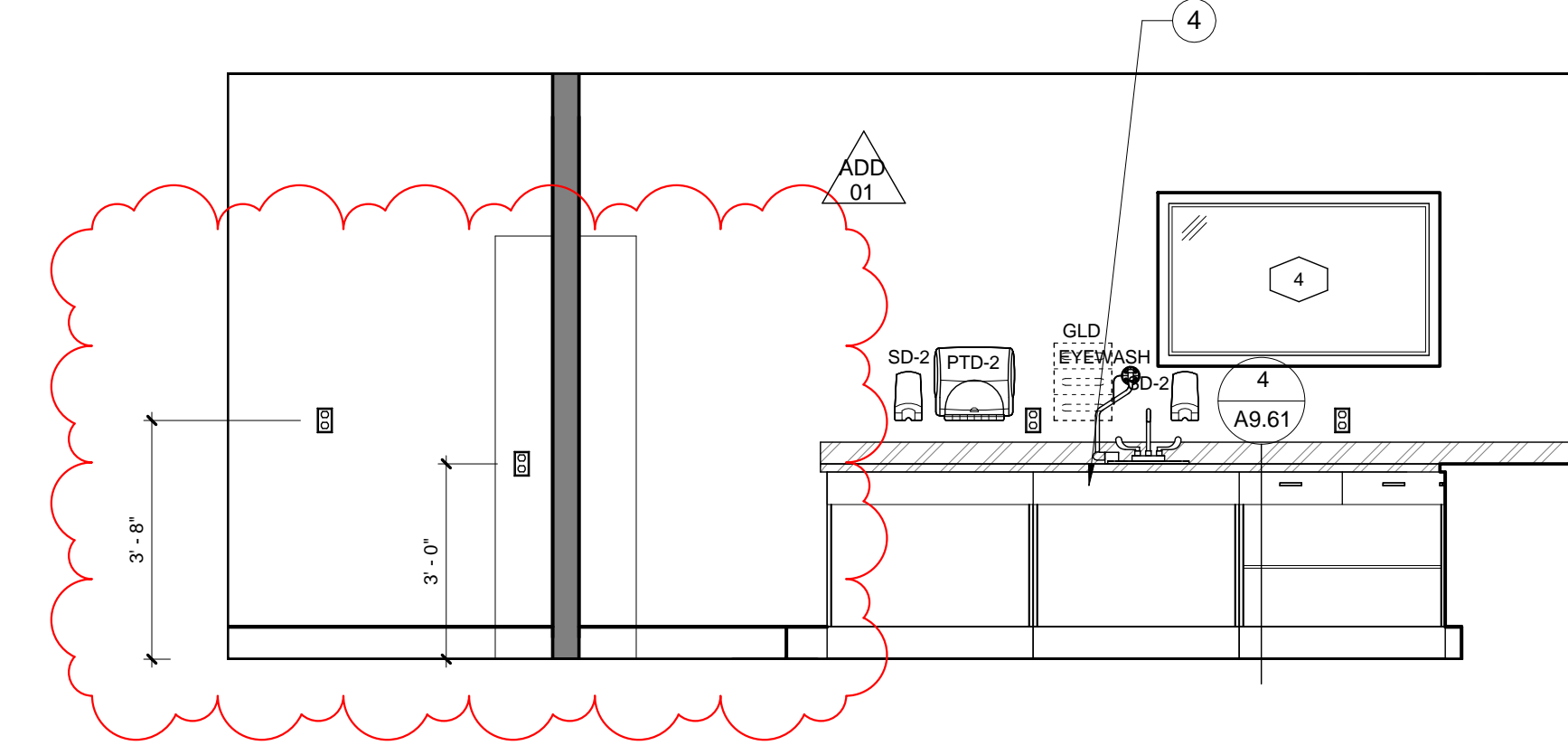
4 PREP/STERILIZATION 223 W
A6.06 3/8" = 1'-0"



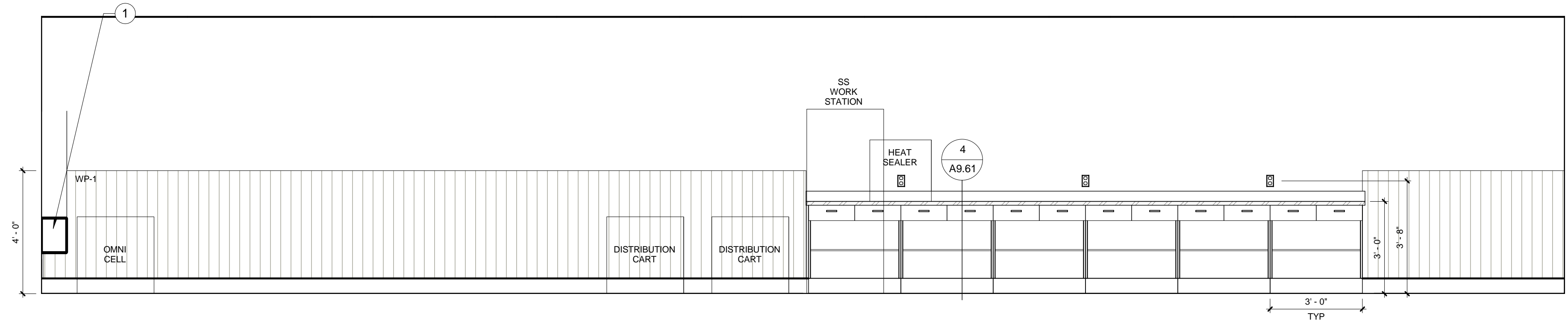
5 SCOPE PROCESSING 225 N
A6.06 3/8" = 1'-0"



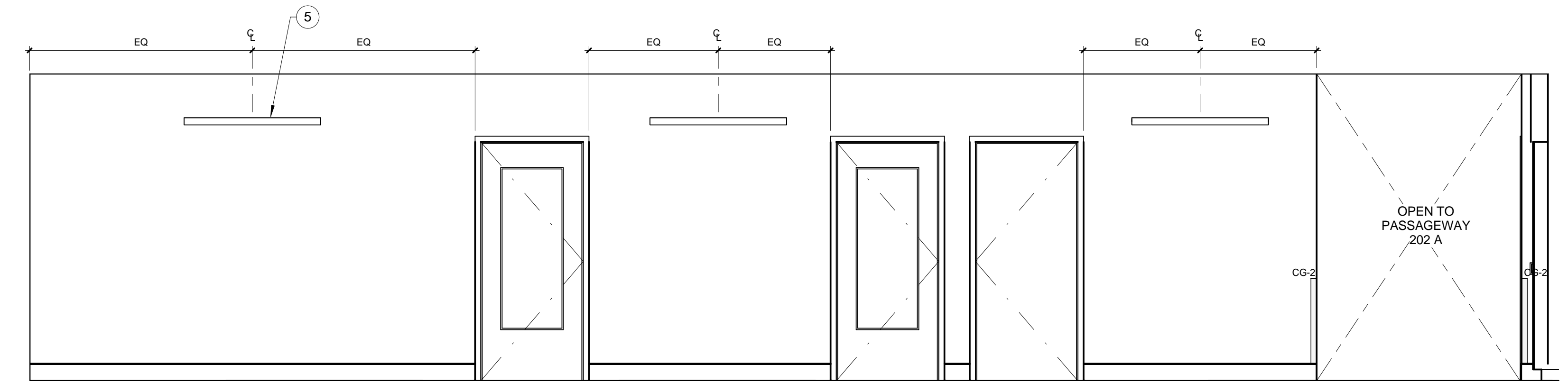
6 SCOPE PROCESSING 225 E
A6.06 3/8" = 1'-0"



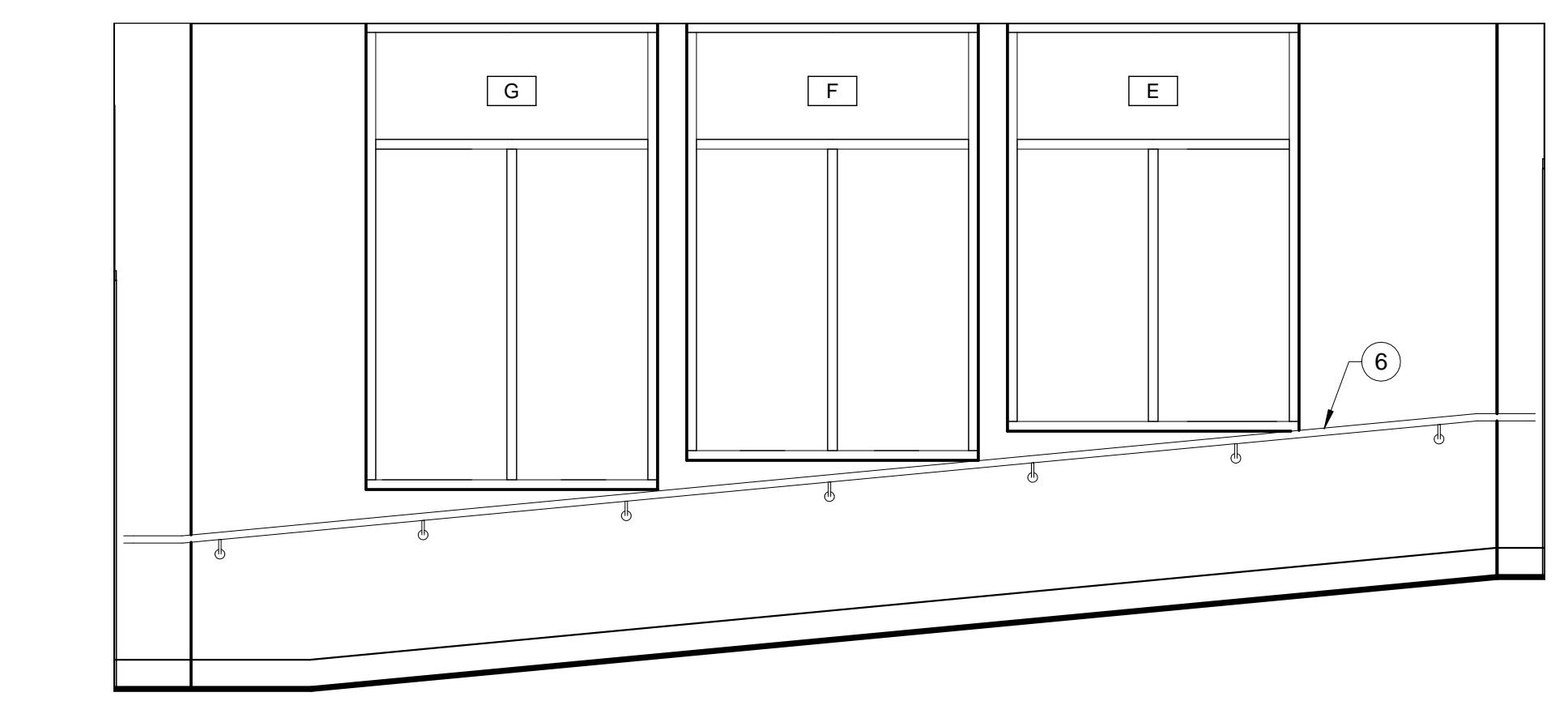
7 SCOPE PROCESSING 225 W
A6.06 3/8" = 1'-0"



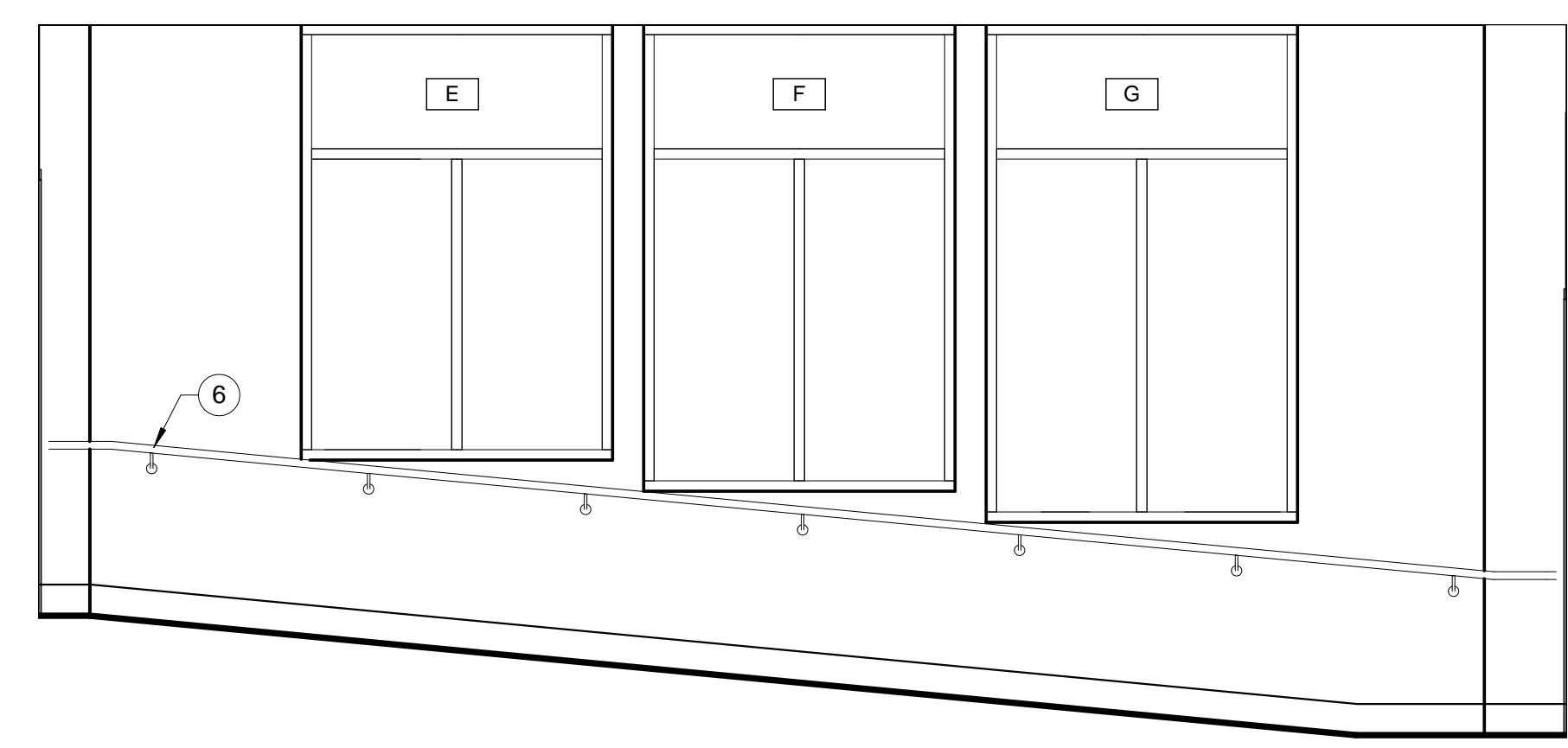
8 STERILE STORAGE 226 S
A6.06 3/8" = 1'-0"



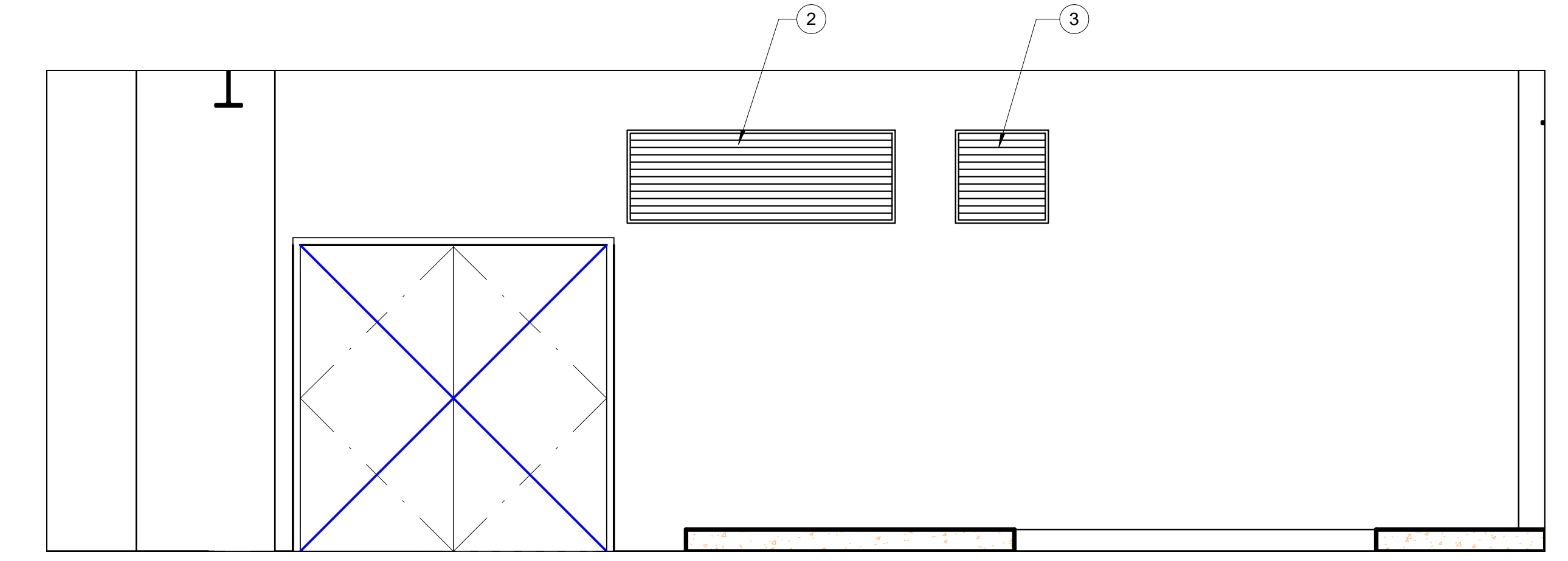
9 CORRIDOR C2SB S
A6.06 3/8" = 1'-0"



10 SKYBRIDGE C2EB E
A6.06 3/8" = 1'-0"



11 SKYBRIDGE C2EB W
A6.06 3/8" = 1'-0"



12 MECHANICAL ROOM B02 N
A6.06 3/8" = 1'-0"

Interior Elevations

General Notes:

- A. Contractor shall coordinate with vendors and owner for installation of all equipment.
- B. For typical fixture and accessory mounting heights, see Sheet A0.22.
- C. Fully coordinate all backing for casework and equipment. Verify with owner for additional items not shown.
- D. Dashed components are Owner Furnished, see (EQ) Equipment Drawings.
- E. For Abbreviations, see A0.21 and A0.22.

Interior Elevations

Legend:

- Rigid Vinyl
- Fire Alarm Visual
- Electrical Devices, See Electrical
- Nurse Call Light

Interior Elevations

Key Notes:

- 1. Brace Frame.
- 2. Relief louver. Coordinate w/ Mechanical.
- 3. Exhaust louver. Coordinate w/ Mechanical.
- 4. S.S. panel in lieu of drawers.
- 5. Light Fixture. See Electrical.
- 6. S.S. wall-mounted handrail @ 34" A.F.F.

Revisions	Date
Addendum 01	06.24.2015

pka
ARCHITECTS

PETERSEN KOLBERG & ASSOCIATES
ARCHITECTS/PLANNERS

6969 SW Hampton Street
Portland, OR 97223
phone: 503-968-6800
fax: 503-968-6860
www.pkaarchitects.com

REGISTERED ARCHITECT
STEVEN N. KOLBERG
PORTLAND, OREGON
1988

VA

DEPARTMENT OF VETERANS AFFAIRS
SOUTHERN OREGON REHABILITATION
CENTER & CLINICS

8495 Crater Lake Highway, White City, Oregon 97503-3012

Drawing Title
Interior Elevations
Final Set

Approved: Proj Eng	Approved: Infect Cont	Approved: Chief P&O	Approved: Chief M&R	Approved: Safety Mgr.
Approved: Service Chief	Approved: Chief Facilities Mgmt	Approved: VAMC Director		

**SPECIALTY CARE
BUILDING - 201B**

Building No. Building 201B	Chkd By/Proj Mgr Author	Drawn By Author
Location LOCATION		

Date
11/27/2015

Project No.
131207

Drawing No.
A6.06

Dwg. of

U.S. DEPARTMENT OF
VETERANS AFFAIRS

