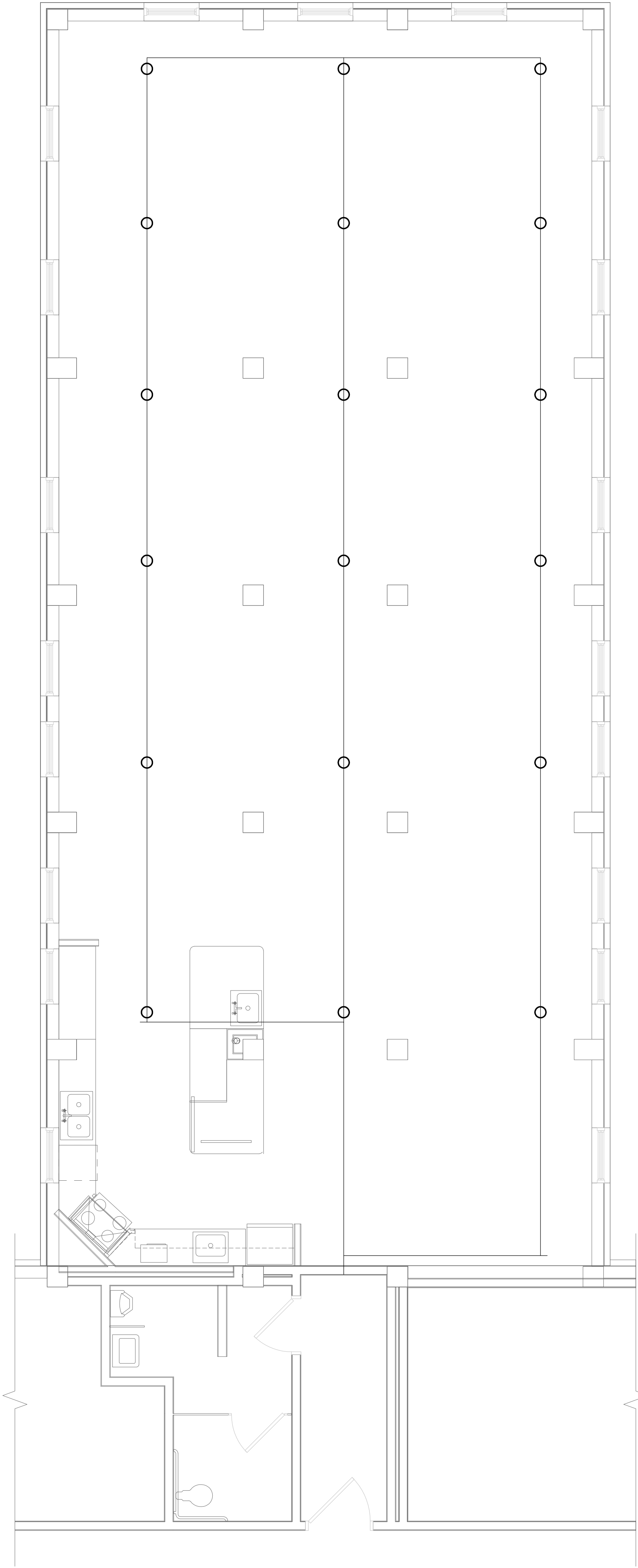
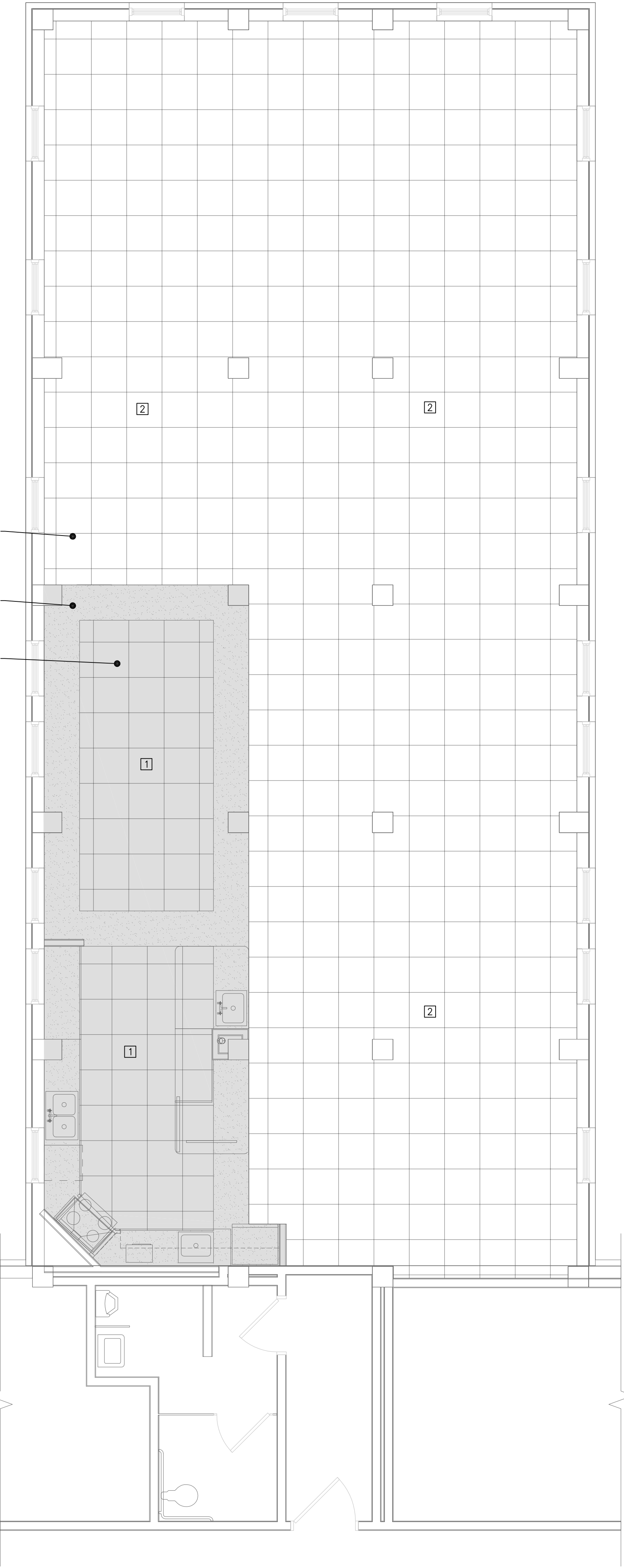


three inches = one foot
one and one half inches = one foot
one inch = one foot
three quarters inch = one foot
one half inch = one foot
three eighths inch = one foot
one quarter inch = one foot
one eighth inch = one foot



1 EXISTING FIRE PROTECTION FLOOR PLAN
SCALE: 1/4" = 1'-0"
TRUE NORTH



1 FIRE PROTECTION FLOOR PLAN
SCALE: 1/4" = 1'-0"
TRUE NORTH

- SHEET NOTES:**
- A. SELECTIVE DEMOLITION INCLUDES, BUT IS NOT LIMITED TO, REMOVAL AND DISPOSAL OF EQUIPMENT AND SYSTEMS MADE OBSOLETE AND/OR REPLACED BY NEW WORK AND FOR EXISTING EQUIPMENT AND SYSTEMS WHICH ARE TO REMAIN.
 - B. THE DEMOLITION WORK INDICATED ON THE DRAWINGS IS INTENDED TO ASSIST THE CONTRACTOR AND GIVE GENERAL INFORMATION. PRIOR TO SUBMITTING BID, THE CONTRACTOR SHALL VISIT THE PROJECT SITE, REVIEW ORIGINAL DRAWINGS IF AVAILABLE. CONTRACTOR IS RESPONSIBLE TO DETERMINE THE FULL EXTENT OF SELECTIVE DEMOLITION, AND INCLUDE ALL REQUIRED SELECTIVE DEMOLITION WORK IN THE BID, WHETHER OR NOT SPECIFICALLY SHOWN ON DRAWINGS. NO ADDITIONAL COSTS WILL BE GRANTED FOR SELECTIVE DEMOLITION. LEGALLY DISPOSE OF ALL ITEMS AND MATERIALS, EXCEPT ANY ITEMS SPECIFICALLY DESIGNATED BY THE OWNER TO BE SALVAGED. REMOVE AND PLACE THE DESIGNATED SALVAGED EQUIPMENT IN A LOCATION DIRECTED BY THE OWNER.
 - C. REFER TO GENERAL CONSTRUCTION TRADE DRAWINGS FOR EXTENT OF AREA TO BE DEMOLISHED.
 - D. CONTRACTOR TO VERIFY ALL EXISTING FIRE PROTECTION IN FIELD PRIOR TO ANY REMOVAL OR INSTALLATION.

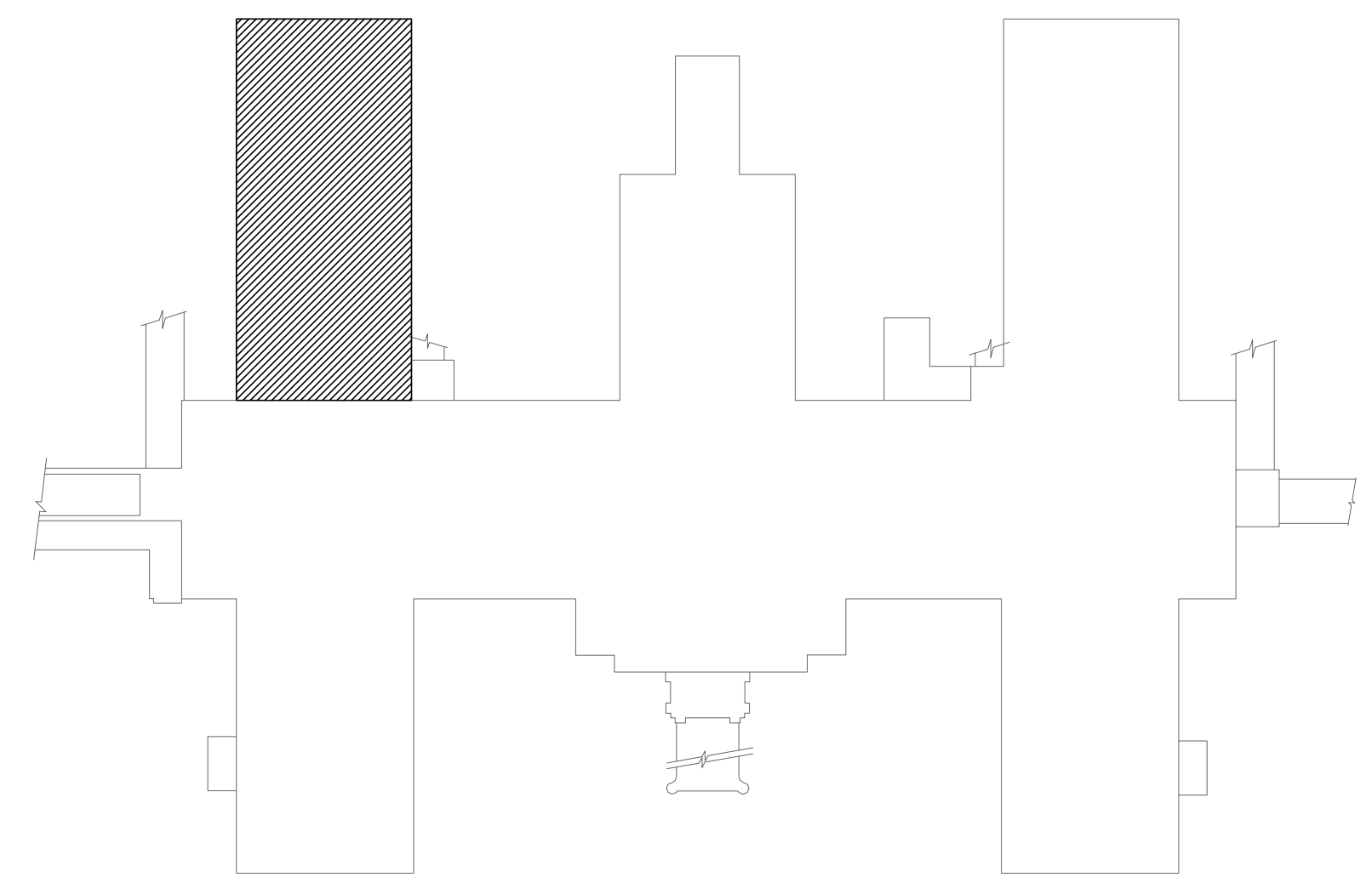
- KEYED NOTES:**
- 1. NEW SUSPENDED CEILING AT LOWER CEILING HEIGHT. EXTEND EXISTING SPRINKLER HEADS DOWN AND RELOCATE INTO CENTER OF CEILING TILES
 - 2. EXISTING CEILING TO REMAIN

SPRINKLER NOTE:

FIRE PROTECTION CONTRACTOR SHALL REVISE THE LOCATIONS OF THE EXISTING SPRINKLER HEADS AS NEEDED PER UPDATED MODIFICATIONS. THE UPDATED SPRINKLER SYSTEM SHALL MEET THE REQUIREMENTS OF THE NFPA CODES, THE FIRE MARSHAL'S OFFICE, AND THE OWNERS APPROVING INSURANCE AGENCY. SPRINKLER CONTRACTOR SHALL COORDINATE THE LOCATION OF ALL CEILING MOUNTED SPRINKLER HEADS TO AVOID ANY AND ALL INTERFERENCE WITH ALL OTHER TRADES. IF CONFLICTS DO OCCUR SUCH THAT LIGHTS, DUCTS, DIFFUSERS, GRILLES OR CEILING SYSTEMS CANNOT BE INSTALLED IN THEIR REQUIRE LOCATIONS DUE TO SPRINKLER PIPING INTERFERENCE, THE PIPING SHALL BE RELOCATED OR REROUTED AT NO ADDITIONAL EXPENSE TO THE PROJECT. SPRINKLER CONTRACTOR SHALL MAINTAIN AN ADEQUATE SUPPLY OF EXTRA PIPING FITTINGS, AND NECESSARY TOOLS TO MAKE FIELD MODIFICATIONS WITHOUT DELAY. AN APPROVED SPRINKLER SHOP DRAWING DOES NOT PRECLUDE REROUTING IF SO ORDERED BY THE ARCHITECT/ENGINEER.

LEGEND:

- SHADED AREA INDICATES CEILING AREA TO BE MODIFIED



KEY PLAN
SCALE: NOT TO SCALE
TRUE NORTH

<div>Revision</div> <div>ISSUED FOR CONSTRUCTION</div> <div>2/24/2012</div>	<div>CONSULTANTS:</div> <div><div><div></div><div>AJH DESIGN</div></div><div>216 OAKWOOD AVENUE ELMIRA HEIGHTS, NEW YORK 14903 PH: (607) 737-4638 FAX: (607) 737-1277</div><div>AJH 11-058</div></div>	<div>ARCHITECT/ENGINEERS:</div> <div><div><div></div><div>Larson Design Group</div></div><div>Larson Design Group • Architects Engineers Surveyors 1000 Commerce Park Drive • Suite 201 Williamsport, PA 17701 PHONE 570.323.6603 TOLL FREE 877.323.6603 FAX 570.323.9902 • www.larsondesigngroup.com</div><div>2-24-2012 Larson Design Group</div></div>	<div>Drawing Title</div> <div>FIRE PROTECTION PLAN</div> <div>Approved Project Director</div> <div>CHRISTOPHER HALL</div>	<div>Project Title</div> <div>KITCHEN RENOVATIONS</div> <div>Location</div> <div>BUILDING #9 ROOM 5C</div> <div>Date</div> <div>2-24-2012</div> <div>Checked</div> <div>MPN</div> <div>Drawn</div> <div>MAS</div>	<div>Project Number</div> <div>6944-001</div> <div>Building Number</div> <div>#9</div> <div>Drawing Number</div> <div>9-PP 1</div> <div>Dwg. 1 of 1</div>	<div>Office of Construction and Facilities Management</div> <div><div></div><div>Department of Veterans Affairs</div></div>
---	--	---	---	---	---	---