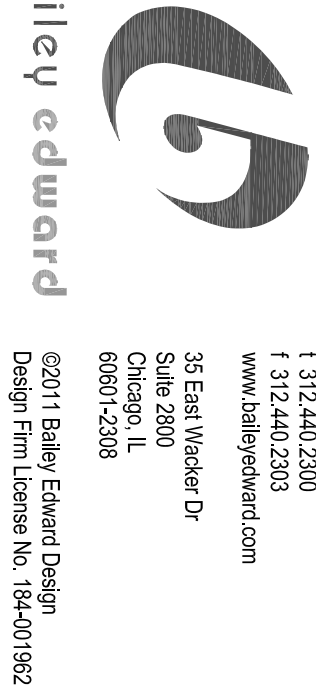


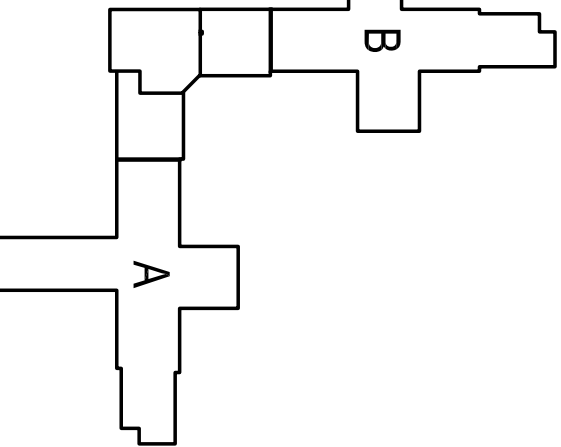
ISSUE FOR BID	02.10.12
Revisions:	

CONSULTANTS:

ARCHITECT/ENGINEERS:



BE # 1115-11-01



KEYPLAN

VISITOR ENTRANCE

one half inch = one foot

three quarters inch = one foot

one inch = one foot

one and one half inches = one foot

three inches = one foot

NOTES:
1. KEY PLAN ONLY. SEE REFERENCED DRAWINGS FOR DETAILS.
2. DRAWINGS FOR CONSTRUCTION AND NEW WORK ACTIVITIES SCHEDULE WITH OWNER REGARDING WORK NEAR
3. CONTRACTOR TO OBTAIN ACCESS THROUGH LOADING DOCK, VERIFY WITH OWNER.