

OTHER LETTER CODES

- PP PROPOSED CSI PROJECT: PET/CT BLDG (2500 SQFT)
- ER ER EXPANSION PROJECT (6600 SQFT)
- PT CSI PROJECT ENCLOSE 4TH FLOOR TERRACE (5200 SQFT)
- PS PROPOSED SOLARIUM
- PH PROPOSED HOSPICE WING

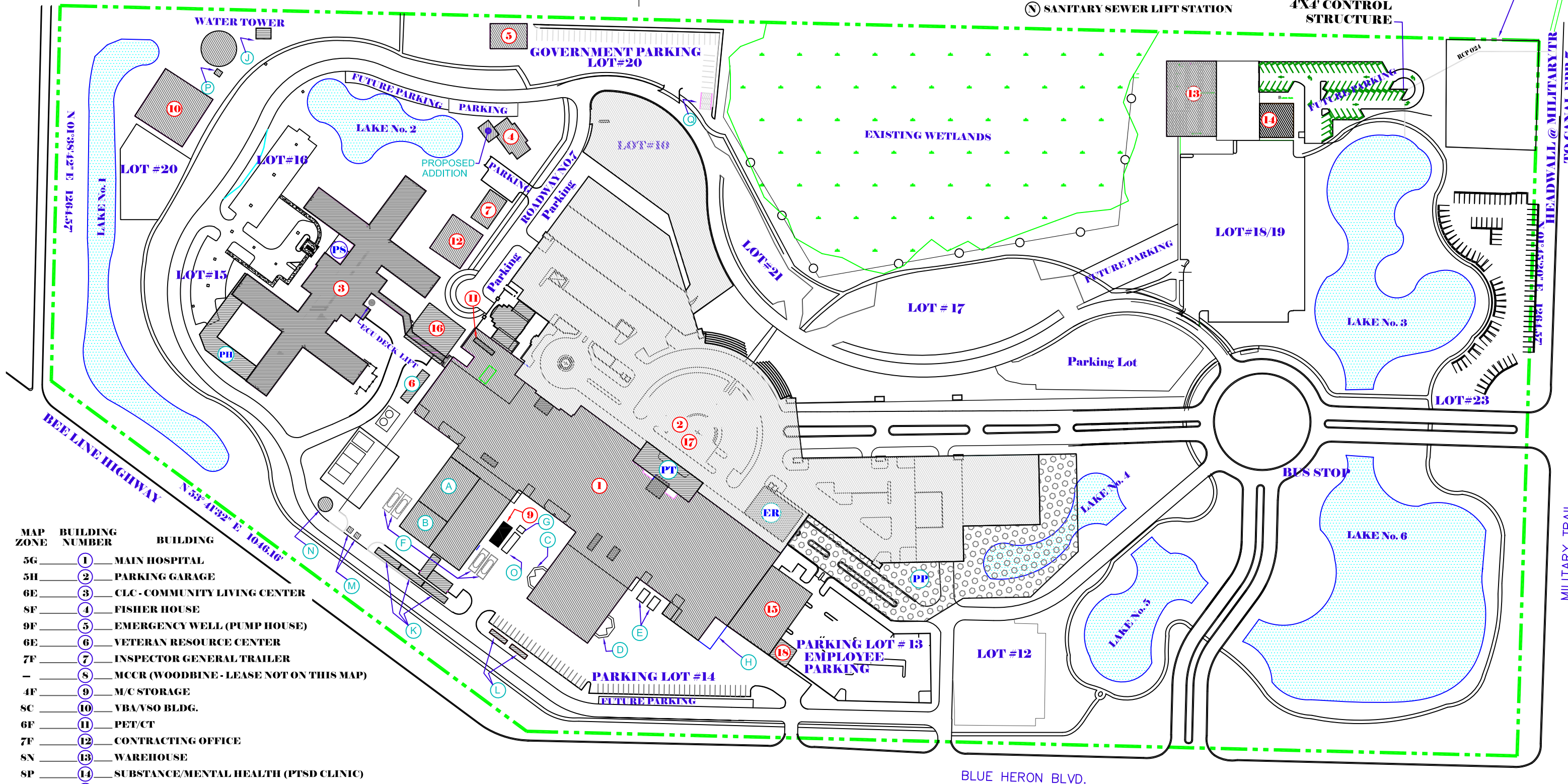
- A SWITCHGEAR ROOM
- B EMERGENCY GENERATOR ROOM (4) 100gal DAY TANKS
- C CLEAN LAUNDRY DOCK LIFT
- D SOILED LAUNDRY DOCK LIFT
- E TRASH COMPACTORS
- F UNDERGROUND FUEL TANKS (2) 10,000 gal

- G USED COOKING OIL
- H DOCK WAREHOUSE LIFT
- J GAS TANK 500 gal & DIESEL TANK 500 gal
- K ENGINE GENERATORS (3) 10,000 gal
- L FUEL TANKS (2) 12,000 gal
- M MISCELLANEOUS STORAGE SHEDS
- N SANITARY SEWER LIFT STATION

- O HAZARDOUS WASTE SHED
- P USED OIL
- Q E85 FUEL TANK

**ENHANCED USED LEASE
FIRE SAFETY BUILDING**

**4X4' CONTROL
STRUCTURE**



MAP ZONE	BUILDING NUMBER	BUILDING
5G	1	MAIN HOSPITAL
5H	2	PARKING GARAGE
6E	3	CLC - COMMUNITY LIVING CENTER
8F	4	FISHER HOUSE
9F	5	EMERGENCY WELL (PUMP HOUSE)
6E	6	VETERAN RESOURCE CENTER
7F	7	INSPECTOR GENERAL TRAILER
-	8	MCCR (WOODBINE - LEASE NOT ON THIS MAP)
4F	9	M/C STORAGE
8C	10	VBA/VSO BLDG.
6F	11	PET/CT
7F	12	CONTRACTING OFFICE
8N	13	WAREHOUSE
8P	14	SUBSTANCE/MENTAL HEALTH (PTSD CLINIC)
3J	15	CANCER CENTER
6F	16	MENTAL HEALTH OUT PATIENT (2500 SQFT CSI PROJECT MENTAL HEALTH/HOMELESS PROGRAM)
5H	17	DECON (IN TUNNEL)
3J	18	PET/CT ADDITION

SITE PLAN
548-17-601 REPLACE AIR COOLED CHILLERS IN OPERATING ROOMS