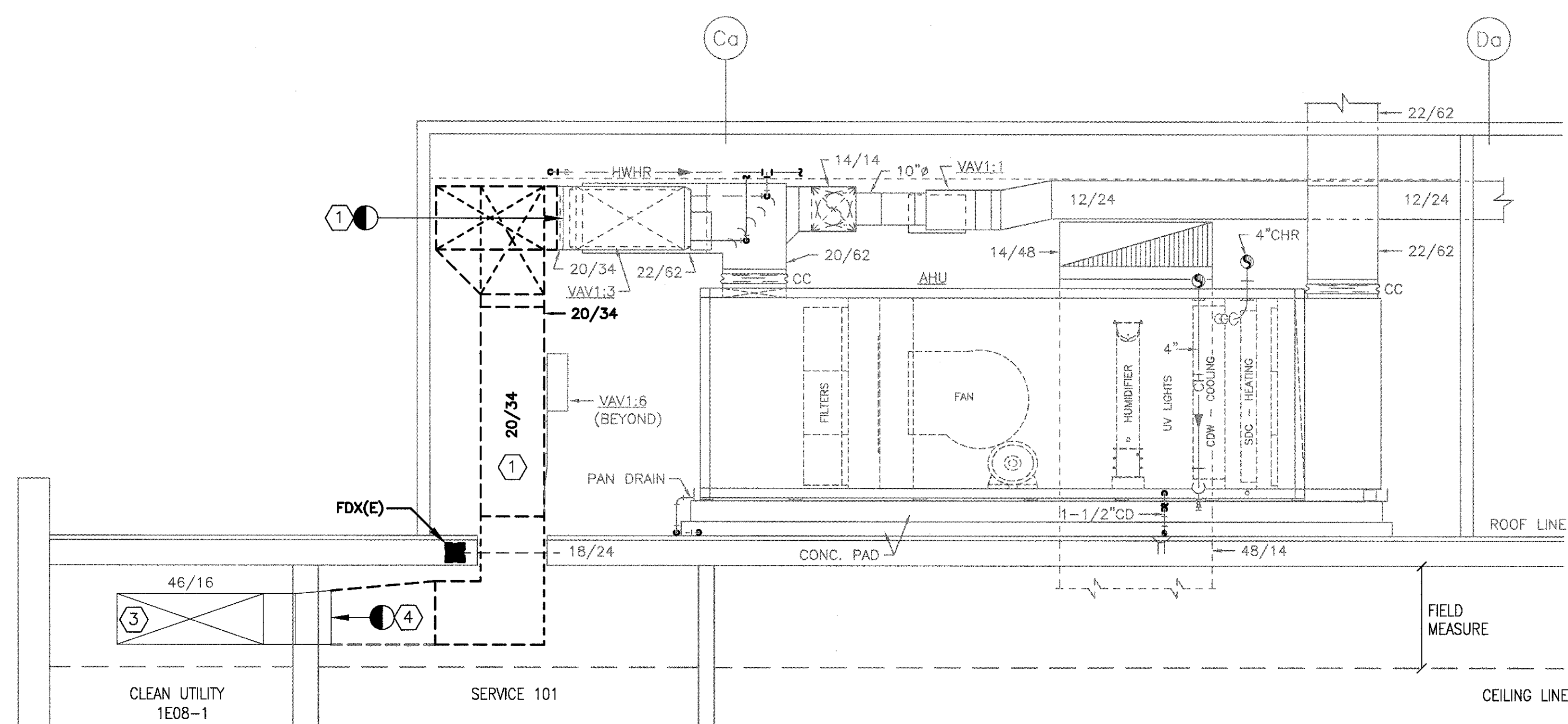
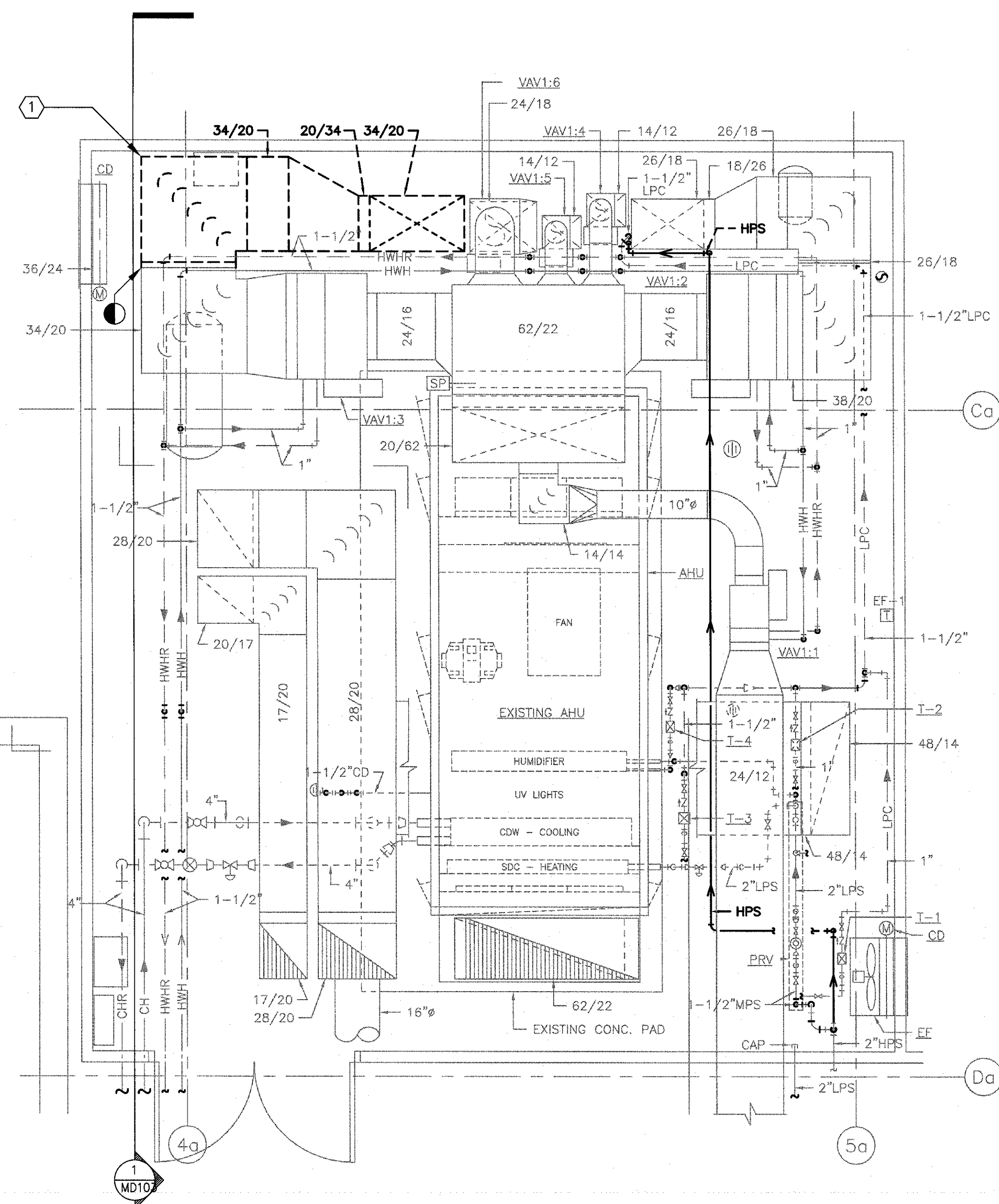


one eighth inch = one foot
one quarter inch = one foot
three eighths inch = one foot
one half inch = one foot
one and one half inches = one foot
three inches = one foot



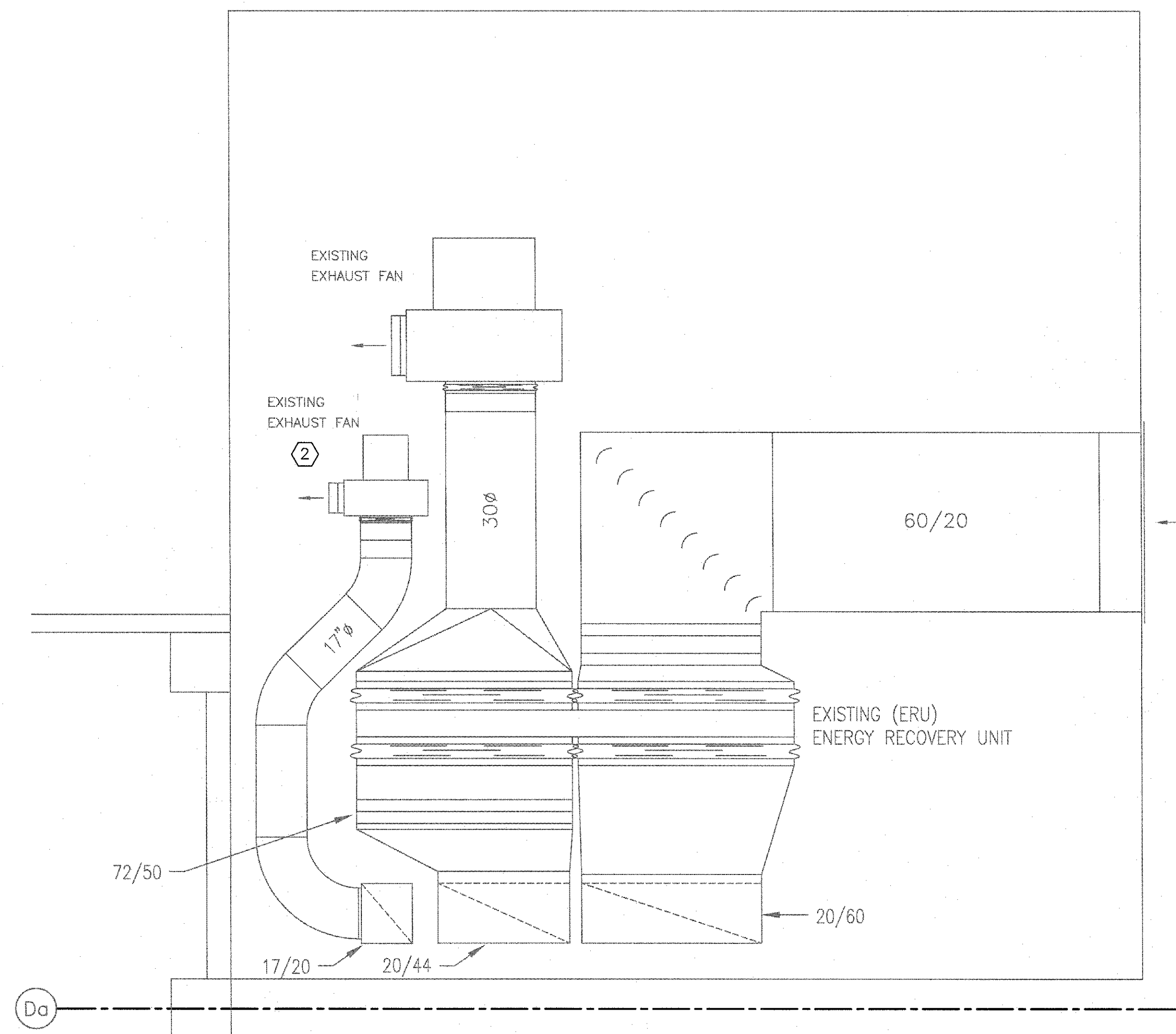
1 SECTION AT MECHANICAL ROOM/EXISTING AHU
3/8" = 1'-0"

** SOME DUCT/PIPING/EQUIPMENT OMITTED FOR CLARITY
ALL EQUIPMENT AND MATERIAL IS EXISTING



2 MECHANICAL ROOM PLAN
3/8" = 1'-0"

** EXISTING MECHANICAL ROOM EQUIPMENT SHOWN FOR CLARITY



3 MECHANICAL ROOM ROOF PLAN
3/8" = 1'-0"

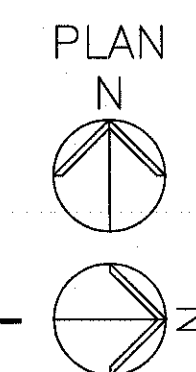
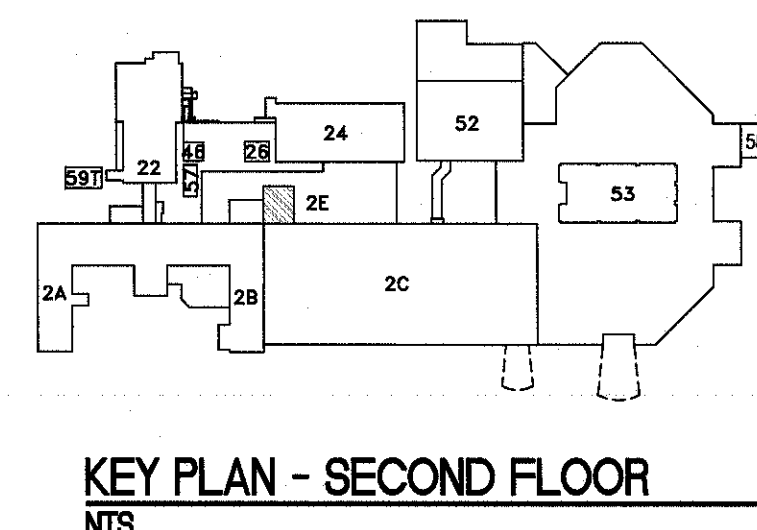
** EXISTING ROOF EQUIPMENT SHOWN FOR CLARITY

NOTES

- REFER TO DRAWING M-001 FOR LEGEND, ABBREVIATIONS, AND GENERAL NOTES RELATED TO THIS SHEET.
- COORDINATE ALL WORK WITH DRAWINGS FROM OTHER TRADES PRIOR TO DEMOLITION. NOTIFY THE G.C./COR WITH ANY CONFLICTS.
- ALL EXISTING PIPING, DUCTWORK, SPRINKLERS, CONDUIT, LIGHTING OR OTHER CONSTRUCTION SHALL BE RELOCATED AS NECESSARY FOR ALL DEMOLITION AND INSTALLATION WORK.
- ALL EXISTING MECHANICAL ROOM EQUIPMENT IS TO REMAIN, AND IS SHOWN FOR CLARITY. PERFORM DEMOLITION AS INDICATED. SEE MH103 FOR NEW WORK.
- COORDINATE ALL WORK WITH THE VA FOR ACCESS AND TO MAINTAIN MECHANICAL SERVICES TO CRITICAL AREAS. EXPECT MOST OF THE WORK TO OCCUR AFTER NORMAL WORKING HOURS, OR OVER WEEKENDS AND HOLIDAYS, AND SERVICES RESTORED BY THE NEXT WORK DAY.

KEY NOTES




- DEMO THE EXISTING SUPPLY DUCT FROM EXISTING VAV1:3 AS SHOWN. DEMO THE DUCT THROUGH THE EXISTING FLOOR PENETRATION. SEE DRAWING MD101 FOR THE LIMITS OF DEMOLITION, MH101 AND MH103 FOR NEW WORK.
- EXISTING EXHAUST FAN PREVIOUSLY SERVING THE ETO STERILIZER, WHICH HAS SINCE BEEN REMOVED. FAN TO NOW SERVE SPS EXHAUST. SEE DRAWINGS MD101 FOR DEMOLITION, MH101 AND MH103 FOR NEW WORK.
- EXISTING 46/16 SUPPLY DUCT SERVING THE EXISTING VAV1:3 TO REMAIN. SEE DRAWINGS MD101, MH101 AND MH103 FOR NEW WORK.
- LIMIT OF DEMOLITION. SEE MH103.



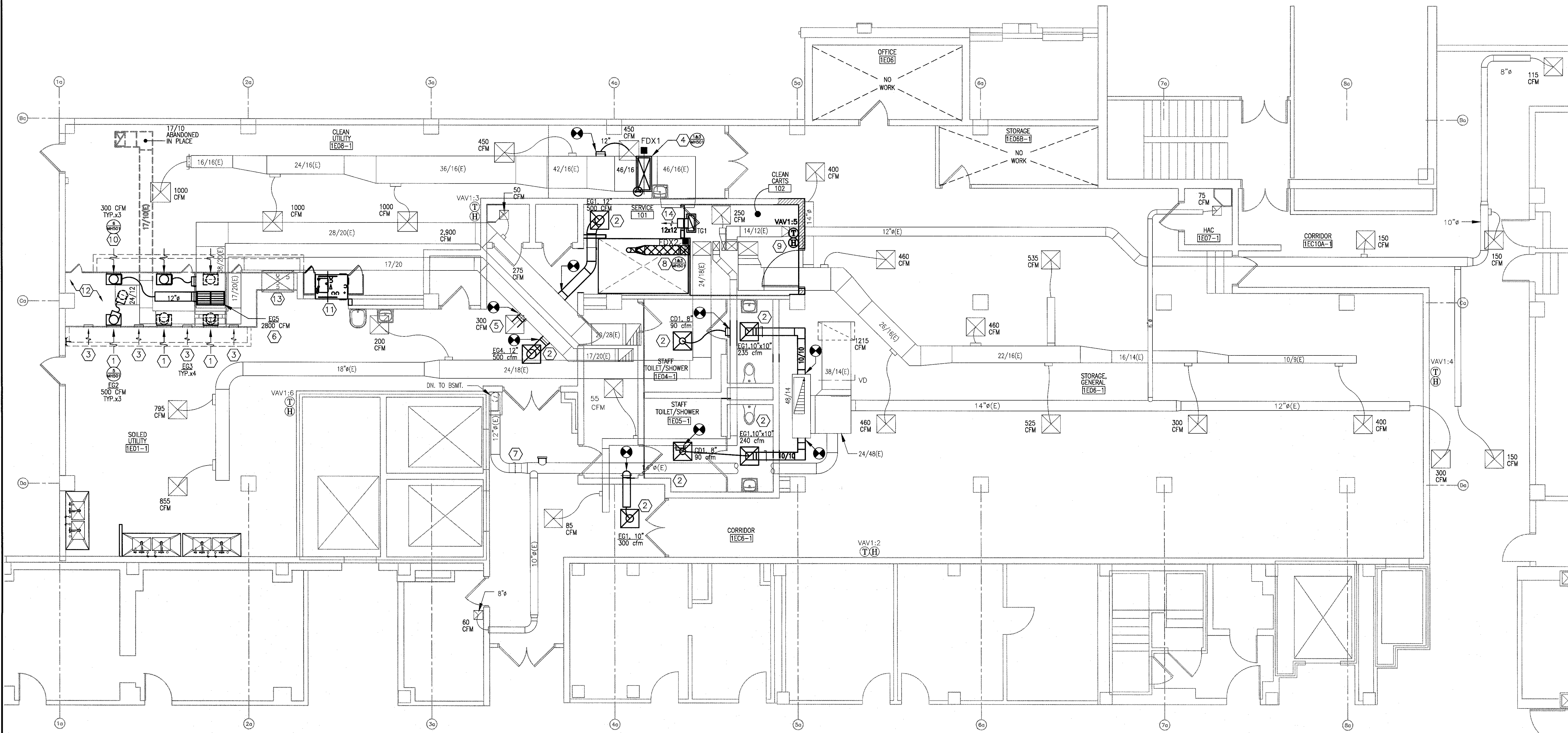
FULLY SPRINKLED
BID DOCUMENTS
FOR CONSTRUCTION

Office of
Construction
and Facilities
Management



		CONSULTANTS:		ARCHITECT/ENGINEERS:	 200 Envoy Circle #201, Louisville KY 40299 - PH: 502.339.8511 - www.paradigmusa.com	Drawing Title		Project Title			Project Number		Office of Construction and Facilities Management
						MECHANICAL HVAC DEMOLITION PLAN AND ELEVATIONS - MECHANICAL ROOM		RENOVATE STERILE PROCESSING SERVICES			623-14-103		
						Approved Project Director		Control Number		Location			Drawing Number
						VA256-14-C-0112		JACK C. MONTGOMERY VAMC					
						PO Number		101 HONOR HEIGHTS DRIVE, MUSKOGEE, OK					
						C40110		Date		Checked	Drawn	MD103	 Department of Veterans Affairs
						3/10/2015		KLP	JDF				
Revisions:		Date											

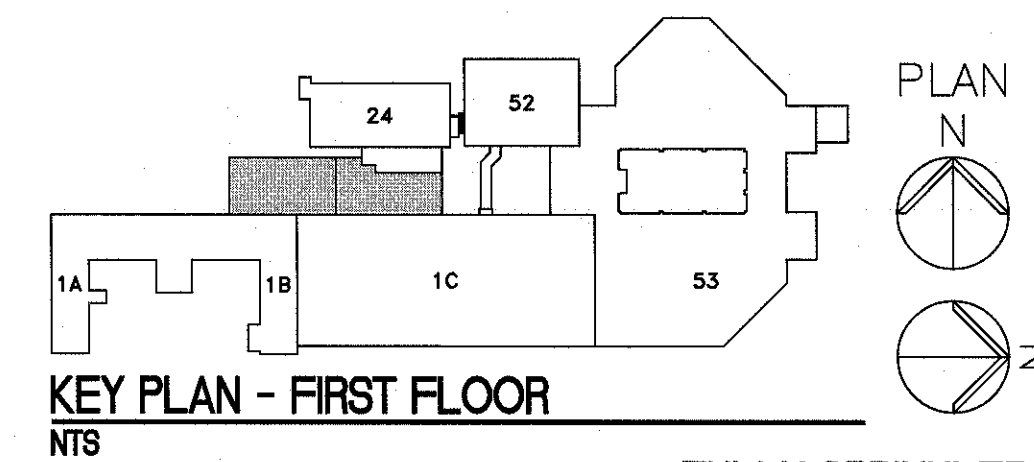
three inches = one foot
one and one half inches = one foot
one inch = one foot
three quarters inch = one foot
one half inch = one foot
three eighths inch = one foot
one quarter inch = one foot
one eighth inch = one foot

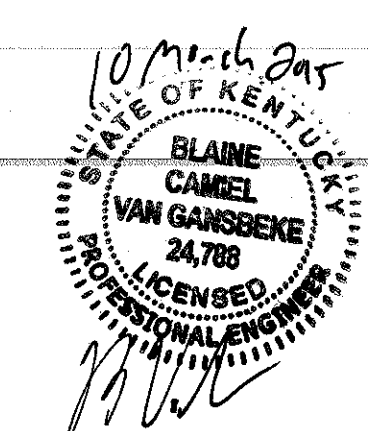

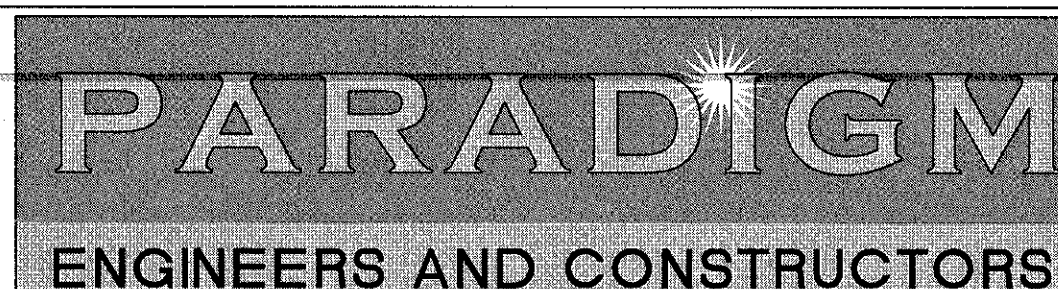


1 1ST FLOOR PLAN
3/16" = 1'-0"

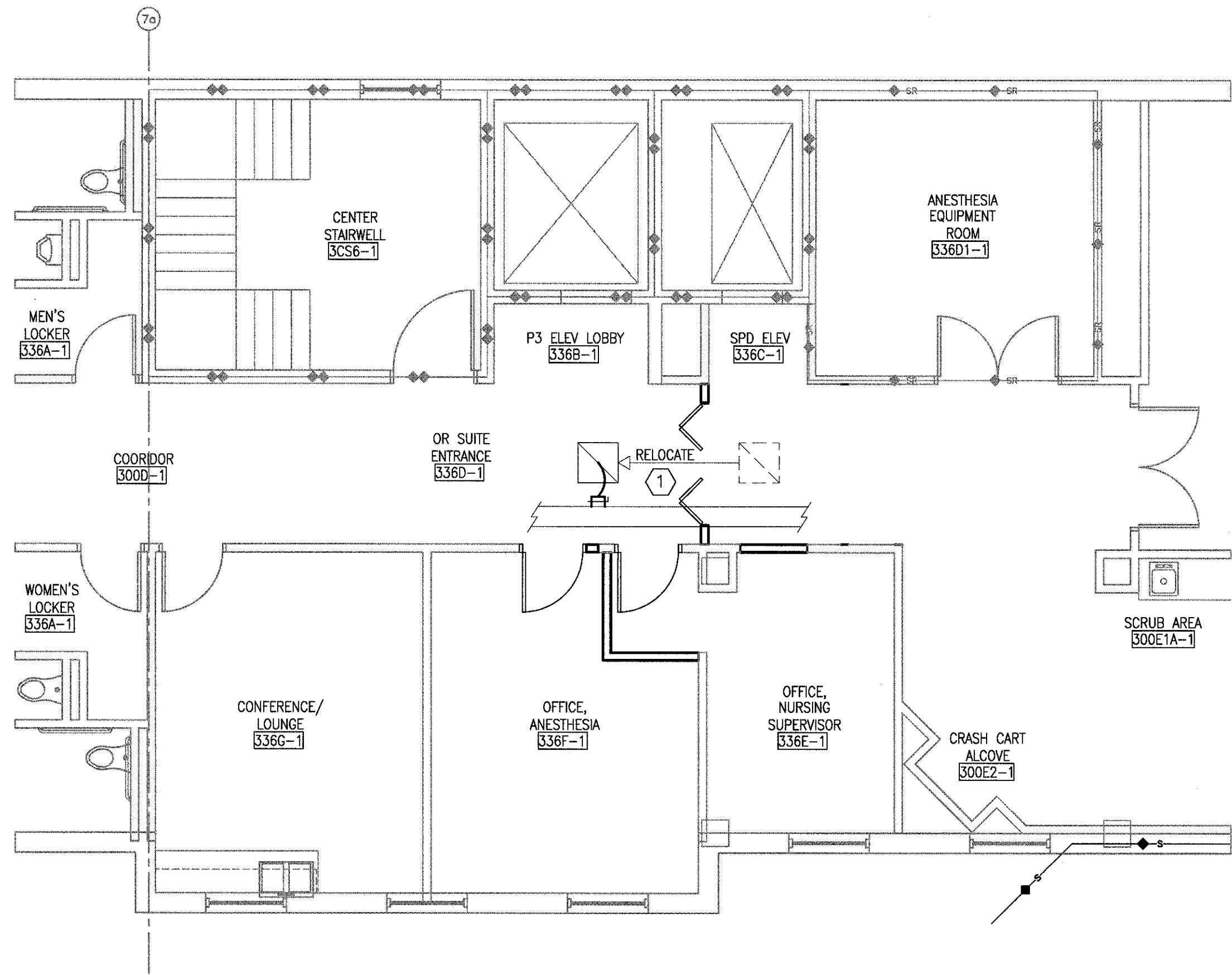
- NOTES**
- REFER TO DRAWING M-001 FOR LEGEND, ABBREVIATIONS, AND GENERAL NOTES RELATED TO THIS SHEET.
 - COORDINATE ALL WORK WITH DRAWINGS FROM OTHER TRADES PRIOR TO DEMOLITION. NOTIFY THE G.C./COR WITH ANY CONFLICTS.
 - ALL EXISTING PIPING, DUCTWORK, SPRINKLERS, CONDUIT, LIGHTING OR OTHER CONSTRUCTION SHALL BE RELOCATED AS NECESSARY FOR ALL DEMOLITION AND INSTALLATION WORK.
 - CONTRACTOR TO MINIMIZE CEILING DISTURBANCE IN ALL AREAS. GENERAL CONTRACTOR TO SUPPLY AND INSTALL 24"x24" ACCESS PANELS AS NECESSARY TO COMPLETE MECHANICAL WORK. COORDINATE NEW ACCESS PANELS LOCATIONS WITH THE GC/COR. ACCESS TO CEILING AREA MAY ALSO BE AVAILABLE VIA THE EXISTING LIGHT FIXTURES. CONSULT WITH THE GC/COR.
 - RE-BALANCE ALL AIR DEVICES TO THE CFM SHOWN.
 - COORDINATE ALL WORK WITH THE VA FOR ACCESS TO MAINTAIN MECHANICAL SERVICES TO CRITICAL AREAS. EXPECT MOST OF THE WORK TO OCCUR AFTER NORMAL WORKING HOURS, OR OVER WEEKENDS AND HOLIDAYS, AND SERVICES RESTORED BY THE NEXT WORK DAY.

- KEY NOTES**
- NEW STAINLESS STEEL EXHAUST GRILLE, AND DUCTWORK. SEE DETAIL ON MH501. RELOCATION OF THE EXISTING UTILITIES (ELECTRICAL CONDUIT) TO ALLOW FOR THE INSTALLATION OF THE NEW EXHAUST DUCTWORK, WILL BE COMPLETED BY THE ELECTRICAL CONTRACTOR. FIELD COORDINATE WORK.
 - NEW AIR DEVICE. BALANCE TO THE CFM SHOWN.
 - NEW STAINLESS STEEL EXHAUST GRILLE WITH BALANCE DAMPER. SURFACE MOUNT THE GRILLE ON THE SIDE OF THE HOOD, AND LEAVE OPEN TO THE EQUIPMENT SIDE PLENUM AS SHOWN. FIELD VERIFY THE EXACT LOCATION OF INSTALLATION; CONSULT WITH THE COR. INSTALLATION WILL BE SIMILAR TO THE EXISTING EXHAUST GRILLES PRIOR TO ADDING DUCTWORK. FULLY OPEN THE BALANCE DAMPER AND REPORT FLOW ON THE AIR BALANCE REPORT.
 - TO MINIMIZE CEILING DISTURBANCE, CONTRACTOR SHALL INSTALL A NEW 42/16 SUPPLY DUCT DROP WITH INSIDE COLLAR LOCK THROUGH ROOF OPENING AND CONNECT TO THE EXISTING 42/16 SUPPLY DUCT AS SHOWN. CONTRACTOR SHALL INSTALL TURNING VANES IN 42/16 DUCT. CONTRACTOR SHALL ALSO INSTALL A FIRE DAMPER AT THE ROOF PENETRATION WITH A 2 HOUR RATING AND AN ACCESS PANEL. FIELD MEASURE/VERIFY. SEE DRAWING MH103 FOR ROOF WORK ABOVE AND MH501 FOR DETAILS.
 - EXISTING EXHAUST AIR DEVICE. CONNECT TO EXISTING 17/20 EXHAUST MAIN AS SHOWN.
 - INSTALL NEW EXHAUST GRILLE IN THE EXISTING DUCT DROP. PREPARE/MODIFY DUCT DROP FOR THE NEW EXHAUST GRILLE. FIELD MEASURE/VERIFY.
 - RE-BALANCE 12" DUCT TO 500 CFM. INSTALL BALANCE DAMPER AS REQUIRED.
 - CONNECT TO EXHAUST FROM NEW CART WASH WITH A 6" STAINLESS STEEL DUCT. TRANSITION TO A 12/12 WELDED, SS DUCT AS SHOWN. ROUTE NEW 12/12 DUCT UP THROUGH EXISTING FLOOR PENETRATION TO MECHANICAL ROOM ABOVE. CONTRACTOR TO USE FLOOR OPENING BEING VACATED BY THE SUPPLY DUCT PREVIOUSLY SERVING THE EXISTING VAV1.3. SEE DRAWING MD101. SLOPE DUCT BACK TO CART WASHER. SEE DRAWING MH103 FOR CONTINUATION. INSTALL A 3/4" DRAIN IN THE BOTTOM OF THE DUCT ELBOW. ROUTE DRAIN PIPE TO NEW FLOOR SINK. SEE PLUMBING DRAWINGS FOR FLOOR SINK LOCATION. CONTRACTOR SHALL ALSO INSTALL A FIRE DAMPER AT THE FLOOR PENETRATION AND AN ACCESS PANEL. FIELD MEASURE/VERIFY. SEE DRAWING MH501 FOR DETAILS.
 - RELOCATED THERMOSTAT AND HUMIDISTAT. SEE DRAWING MD101.
 - NEW EXHAUST DUCTWORK. SEE DETAIL ON MH501. RELOCATION OF THE EXISTING UTILITIES (DOMESTIC WATER PIPE AND COMPRESSED AIR) TO ALLOW FOR THE INSTALLATION OF THE NEW EXHAUST DUCTWORK, WILL BE COMPLETED BY THE PLUMBING CONTRACTOR. FIELD COORDINATE WORK. SEE DRAWING PD101.
 - NEW STERIS VISION UTENSIL WASHER.
 - EXISTING STERIS AUTOCLAVE/STERILIZER MACHINES AND PASS-THROUGH.
 - EXISTING STERIS RELIANCE 444 UTENSIL WASHER.
 - NEW TRANSFER GRILLE. TRANSFER AIR FROM CLEAN CARTS TO SERVICE ROOM AS SHOWN. TERMINATE WITH 12x12 DUCT, AS HIGH AS POSSIBLE, IN SERVICE ROOM WITH MESH SCREEN. SEE MH601 FOR AIR DEVICE SCHEDULE.



CONSULTANTS:			ARCHITECT/ENGINEERS:		Drawing Title MECHANICAL HVAC PLAN - NEW WORK FIRST FLOOR		Project Title RENOVATE STERILE PROCESSING SERVICES		Project Number 623-14-103		Office of Construction and Facilities Management 
Revisions	Date		 200 Envoy Circle #201, Louisville KY 40299 - PH: 502.339.8511 - www.paradigmusa.com		Approved Project Director	Control Number VA256-14-C-0112 PO Number C40110	Location JACK C. MONTGOMERY VAMC 3711 HONOR HEIGHTS DRIVE, MURKOOZE, LA	Date 3/10/2015	Checked KLP	Drawn JDF	Drawing Number MH101

one eighth inch = one foot
one quarter inch = one foot
three eighths inch = one foot
one half inch = one foot
one inch = one foot
one and one half inches = one foot
two inches = one foot
three inches = one foot



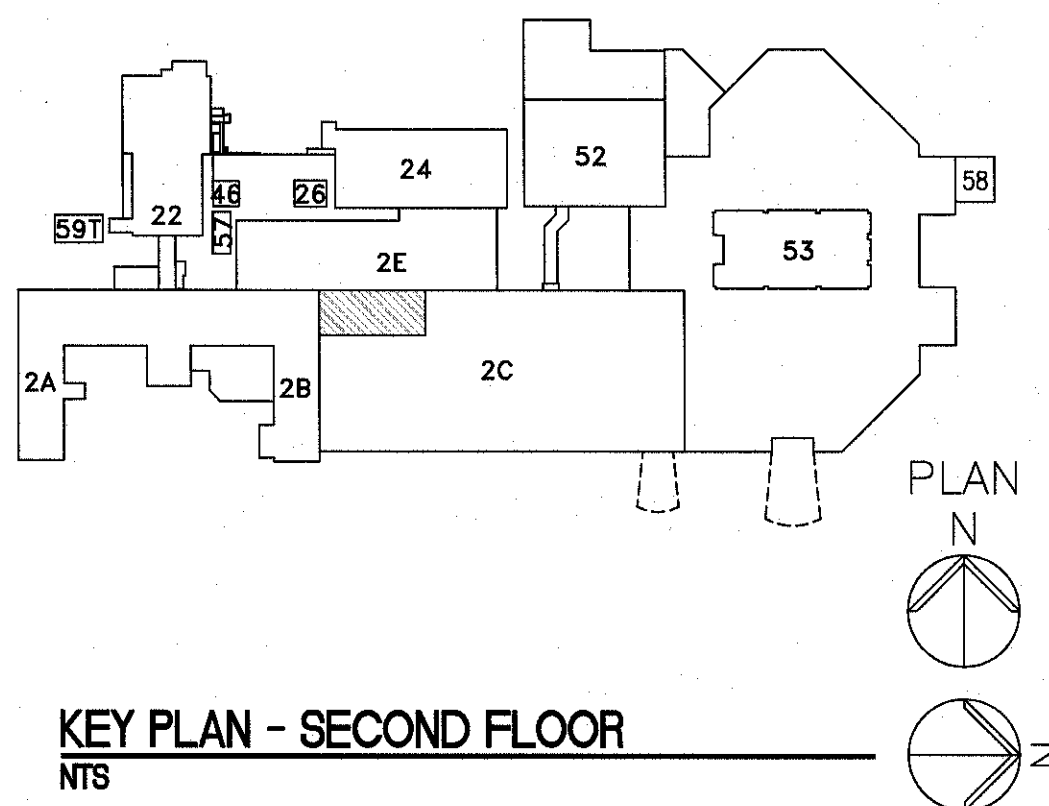
1 PARTIAL 2ND FLOOR PLAN
3/8" = 1'-0"

NOTES

- REFER TO DRAWING M-001 FOR LEGEND, ABBREVIATIONS, AND GENERAL NOTES RELATED TO THIS SHEET.
- COORDINATE ALL WORK WITH DRAWINGS FROM OTHER TRADES PRIOR TO DEMOLITION. NOTIFY THE G.C./COR WITH ANY CONFLICTS.
- ALL EXISTING PIPING, DUCTWORK, SPRINKLERS, CONDUIT, LIGHTING OR OTHER CONSTRUCTION SHALL BE RELOCATED AS NECESSARY FOR ALL DEMOLITION AND INSTALLATION WORK.
- COORDINATE ALL WORK WITH THE VA FOR ACCESS TO MAINTAIN MECHANICAL SERVICES TO CRITICAL AREAS. EXPECT MOST OF THE WORK TO OCCUR AFTER NORMAL WORKING HOURS, OR OVER WEEKENDS AND HOLIDAYS, AND SERVICES RESTORED BY THE NEXT WORK DAY.

KEY NOTES

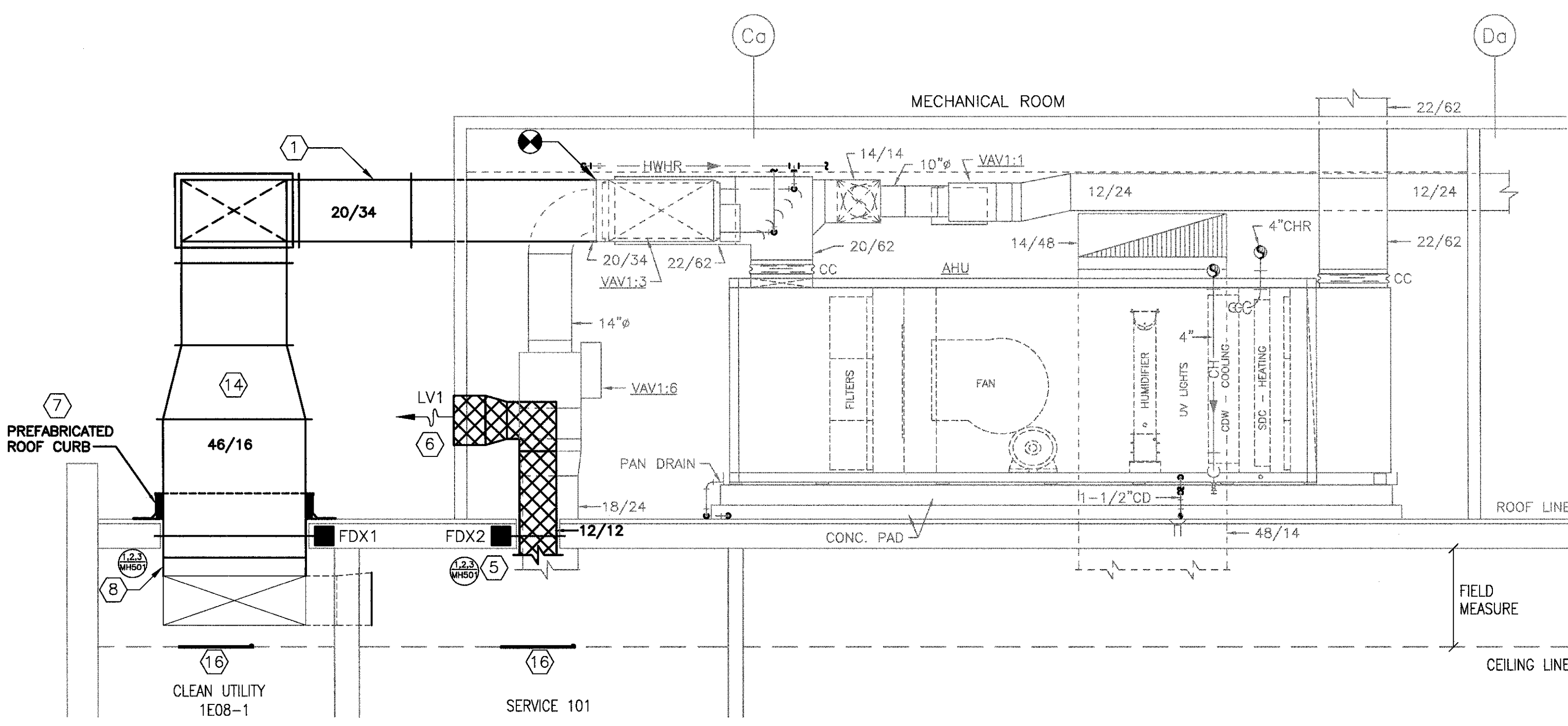
- RELOCATE EXISTING EXHAUST/RETURN AIR DEVICE OUTSIDE OF NEW DOUBLE DOOR LOCATION. SEE DRAWING MD101.



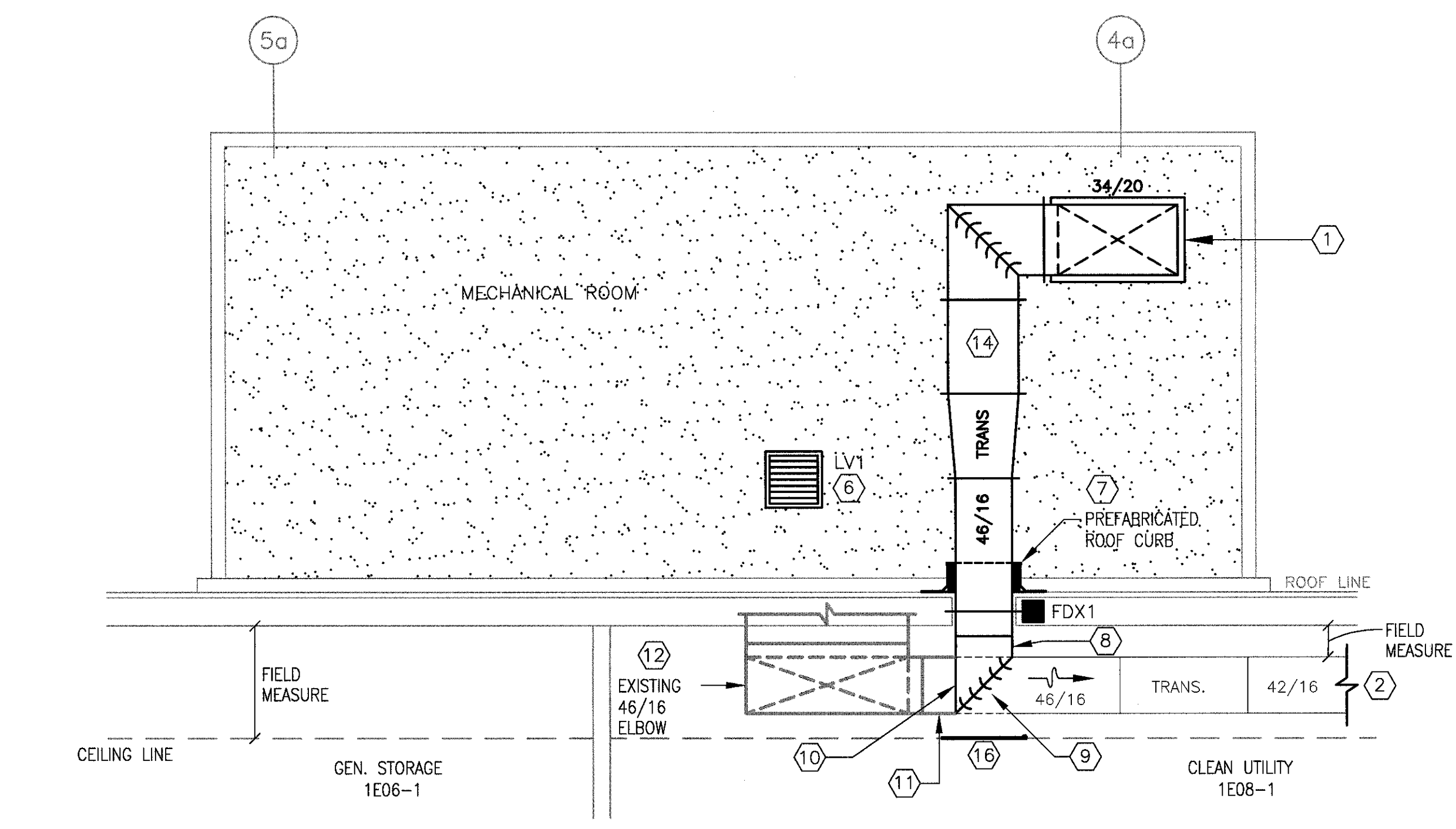
FULLY SPRINKLED
BID DOCUMENTS
FOR CONSTRUCTION

--	--	--	--	--	--	--	--	--	--	--	--	--	--	--	--	--	--	--	--	--	--	--	--	--	--	--	--	--	--	--	--	--	--	--	--	--	--	--	--	--	--	--	--	--	--	--	--	--	--	--	--	--	--	--	--	--	--	--	--	--	--	--	--	--	--	--	--	--	--	--	--	--	--	--	--	--	--	--	--	--	--	--	--	--	--	--	--	--	--	--	--	--	--	--	--	--	--	--	--	--	--	--	--	--	--	--	--	--	--	--	--	--	--	--	--	--	--	--	--	--	--	--	--	--	--	--	--	--	--	--	--	--	--	--	--	--	--	--	--	--	--	--	--	--	--	--	--	--	--	--	--	--	--	--	--	--	--	--	--	--	--	--	--	--	--	--	--	--	--	--	--	--	--	--	--	--	--	--	--	--	--	--	--	--	--	--	--	--	--	--	--	--	--	--	--	--	--	--	--	--	--	--	--	--	--	--	--	--	--	--	--	--	--	--	--	--	--	--	--	--	--	--	--	--	--	--	--	--	--	--	--	--	--	--	--	--	--	--	--	--	--	--	--	--	--	--	--	--	--	--	--	--	--	--	--	--	--	--	--	--	--	--	--	--	--	--	--	--	--	--	--	--	--	--	--	--	--	--	--	--	--	--	--	--	--	--	--	--	--	--	--	--	--	--	--	--	--	--	--	--	--	--	--	--	--	--	--	--	--	--	--	--	--	--	--	--	--	--	--	--	--	--	--	--	--	--	--	--	--	--	--	--	--	--	--	--	--	--	--	--	--	--	--	--	--	--	--	--	--	--	--	--	--	--	--	--	--	--	--	--	--	--	--	--	--	--	--	--	--	--	--	--	--	--	--	--	--	--	--	--	--	--	--	--	--	--	--	--	--	--	--	--	--	--	--	--	--	--	--	--	--	--	--	--	--	--	--	--	--	--	--	--	--	--	--	--	--	--	--	--	--	--	--	--	--	--	--	--	--	--	--	--	--	--	--	--	--	--	--	--	--	--	--	--	--	--	--	--	--	--	--	--	--	--	--	--	--	--	--	--	--	--	--	--	--	--	--	--	--	--	--	--	--	--	--	--	--	--	--	--	--	--	--	--	--	--	--	--	--	--	--	--	--	--	--	--	--	--	--	--	--	--	--	--	--	--	--	--	--	--	--	--	--	--	--	--	--	--	--	--	--	--	--	--	--	--	--	--	--	--	--	--	--	--	--	--	--	--	--	--	--	--	--	--	--	--	--	--	--	--	--	--	--	--	--	--	--	--	--	--	--	--	--	--	--	--	--	--	--	--	--	--	--	--	--	--	--	--	--	--	--	--	--	--	--	--	--	--	--	--	--	--	--	--	--	--	--	--	--	--	--	--	--	--	--	--	--	--	--	--	--	--	--	--	--	--	--	--	--	--	--	--	--	--	--	--	--	--	--	--	--	--	--	--	--	--	--	--	--	--	--	--	--	--	--	--	--	--	--	--	--	--	--	--	--	--	--	--	--	--	--	--	--	--	--	--	--	--	--	--	--	--	--	--	--	--	--	--	--	--	--	--	--	--	--	--	--	--	--	--	--	--	--	--	--	--	--	--	--	--	--	--	--	--	--	--	--	--	--	--	--	--	--	--	--	--	--	--	--	--	--	--	--	--	--	--	--	--	--	--	--	--	--	--	--	--	--	--	--	--	--	--	--	--	--	--	--	--	--	--	--	--	--	--	--	--	--	--	--	--	--	--	--	--	--	--	--	--	--	--	--	--	--	--	--	--	--	--	--	--	--	--	--	--	--	--	--	--	--	--	--	--	--	--	--	--	--	--	--	--	--	--	--	--	--	--	--	--	--	--	--	--	--	--	--	--	--	--	--	--	--	--	--	--	--	--	--	--	--	--	--	--	--	--	--	--	--	--	--	--	--	--	--	--	--	--	--	--	--	--	--	--	--	--	--	--	--	--	--	--	--	--	--	--	--	--	--	--	--	--	--	--	--	--	--	--	--	--	--	--	--	--	--	--	--	--	--	--	--	--	--	--	--	--	--	--	--	--	--	--	--	--	--	--	--	--	--	--	--	--	--	--	--	--	--	--	--	--	--	--	--	--	--	--	--	--	--	--	--	--	--	--	--	--	--	--	--	--	--	--	--	--	--	--	--	--	--	--	--	--	--	--	--	--	--	--	--	--	--	--	--	--	--	--	--	--	--	--	--	--	--	--	--	--	--	--	--	--	--	--	--	--	--	--	--	--	--	--	--	--	--	--	--	--	--	--	--	--	--	--	--	--	--	--	--	--	--	--	--	--	--	--	--	--	--	--	--	--	--	--	--	--	--	--	--	--	--	--	--	--	--	--	--	--	--	--	--	--	--	--	--	--	--	--	--	--	--	--	--	--	--	--	--	--	--	--	--	--	--	--	--	--	--	--	--	--	--	--	--	--	--	--	--	--	--	--	--	--	--	--	--	--	--	--	--	--	--	--	--	--	--	--	--	--	--	--	--	--	--	--	--	--	--	--	--	--	--	--	--	--	--	--	--	--	--	--	--	--	--	--	--	--	--	--	--	--	--	--	--	--	--	--	--	--	--	--	--	--	--	--	--	--	--	--	--	--	--	--	--	--	--	--	--	--	--	--	--	--	--	--	--	--	--	--	--	--	--	--	--

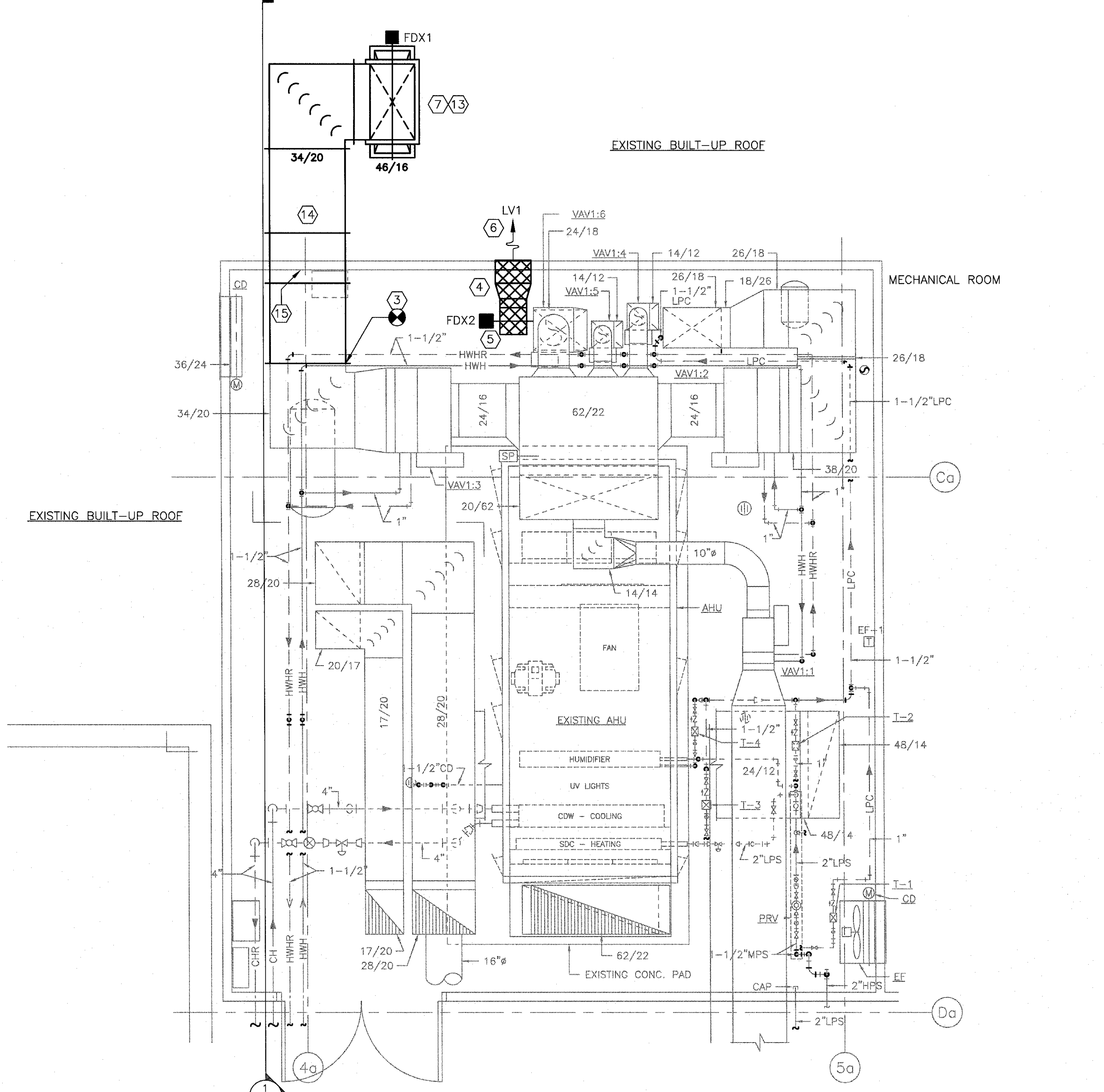
three inches = one foot
one and one half inches = one foot
one inch = one foot
three quarters inch = one foot
one half inch = one foot
three eighths inch = one foot
one quarter inch = one foot
one eighth inch = one foot



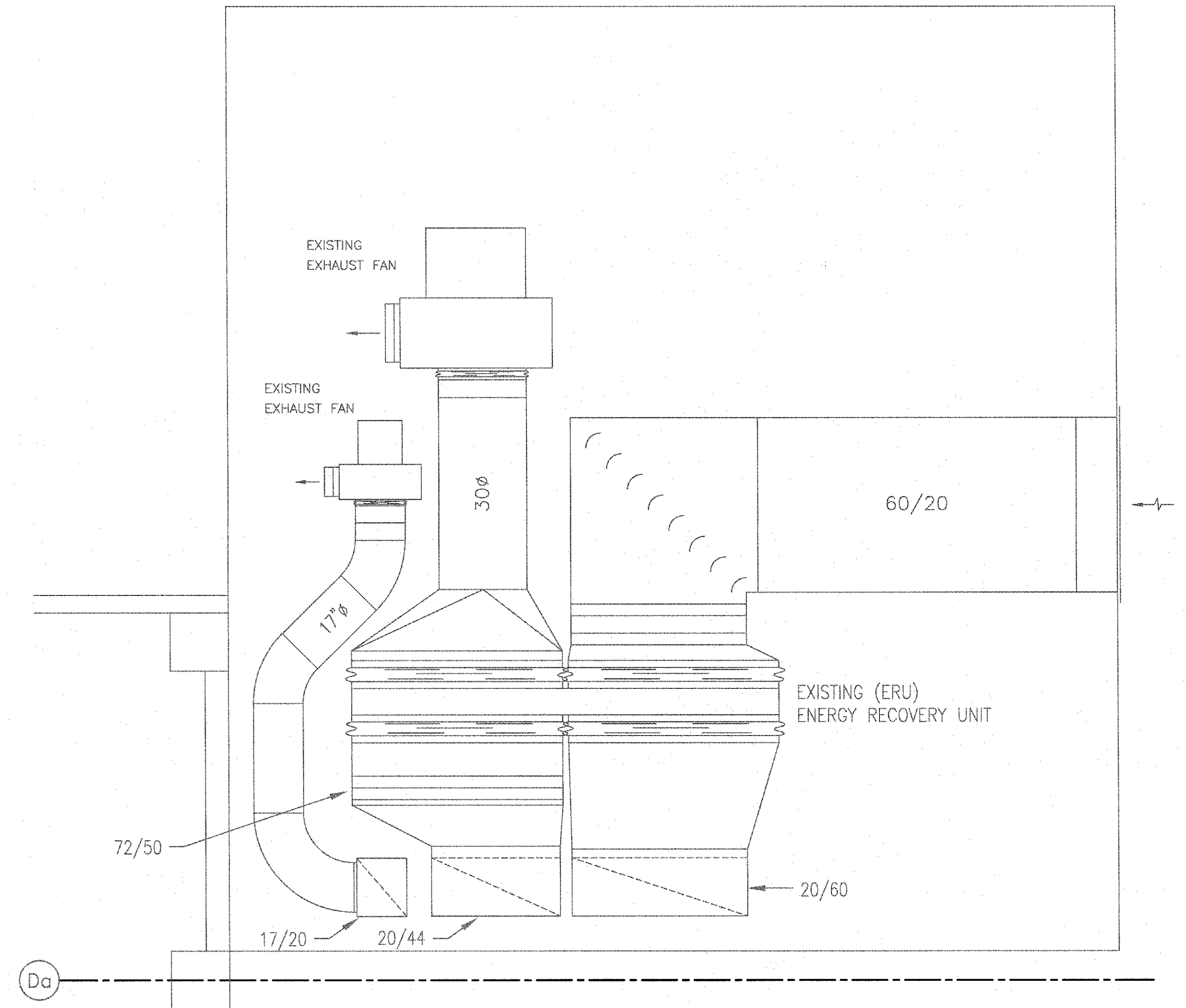
1 SECTION AT MECHANICAL ROOM/EXISTING AHU
3/8" = 1'-0"



2 ELEVATION AT MECHANICAL ROOM END WALL
3/8" = 1'-0"



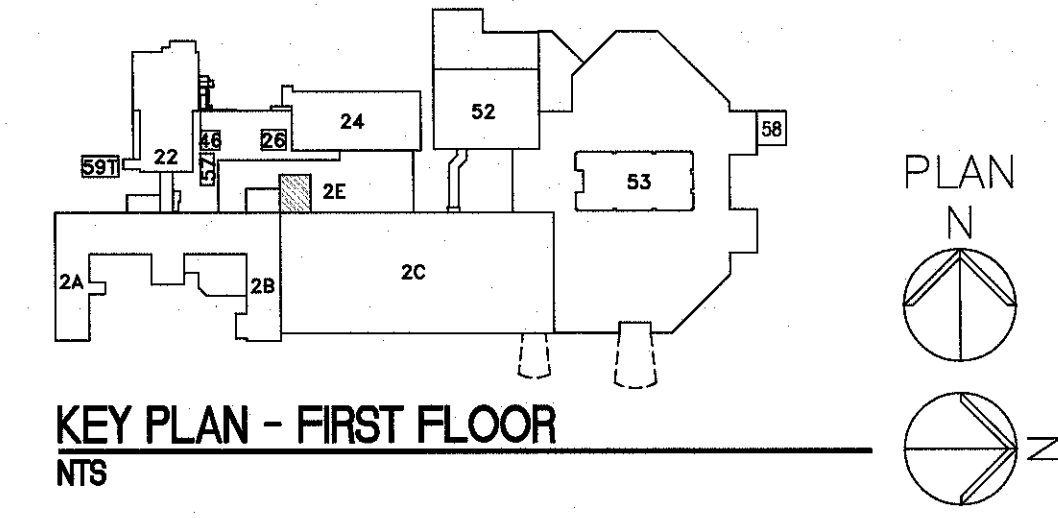
3 MECHANICAL ROOM PLAN
3/8" = 1'-0"



4 MECHANICAL ROOM ROOF PLAN
3/8" = 1'-0"

- NOTES**
- A. REFER TO DRAWING M-001 FOR LEGEND, ABBREVIATIONS, AND GENERAL NOTES RELATED TO THIS SHEET.
 - B. COORDINATE ALL WORK WITH DRAWINGS FROM OTHER TRADES PRIOR TO DEMOLITION. NOTIFY THE G.C./COR WITH ANY CONFLICTS.
 - C. ALL EXISTING PIPING, DUCTWORK, SPRINKLERS, CONDUIT, LIGHTING OR OTHER CONSTRUCTION SHALL BE RELOCATED AS NECESSARY FOR ALL DEMOLITION AND INSTALLATION WORK.
 - D. CONTRACTOR SHALL FIELD DETERMINE/MEASURE/VERIFY ALL DUCTWORK ROUTING, AND WALL AND ROOF PENETRATIONS. CONSULT WITH THE GC/COR.
 - E. COORDINATE ALL WORK WITH THE VA FOR ACCESS TO MAINTAIN MECHANICAL SERVICES TO CRITICAL AREAS. EXPECT MOST OF THE WORK TO OCCUR AFTER NORMAL HOURS, OR OVER WEEKENDS AND HOLIDAYS, AND SERVICES RESTORED BY THE NEXT WORK DAY.

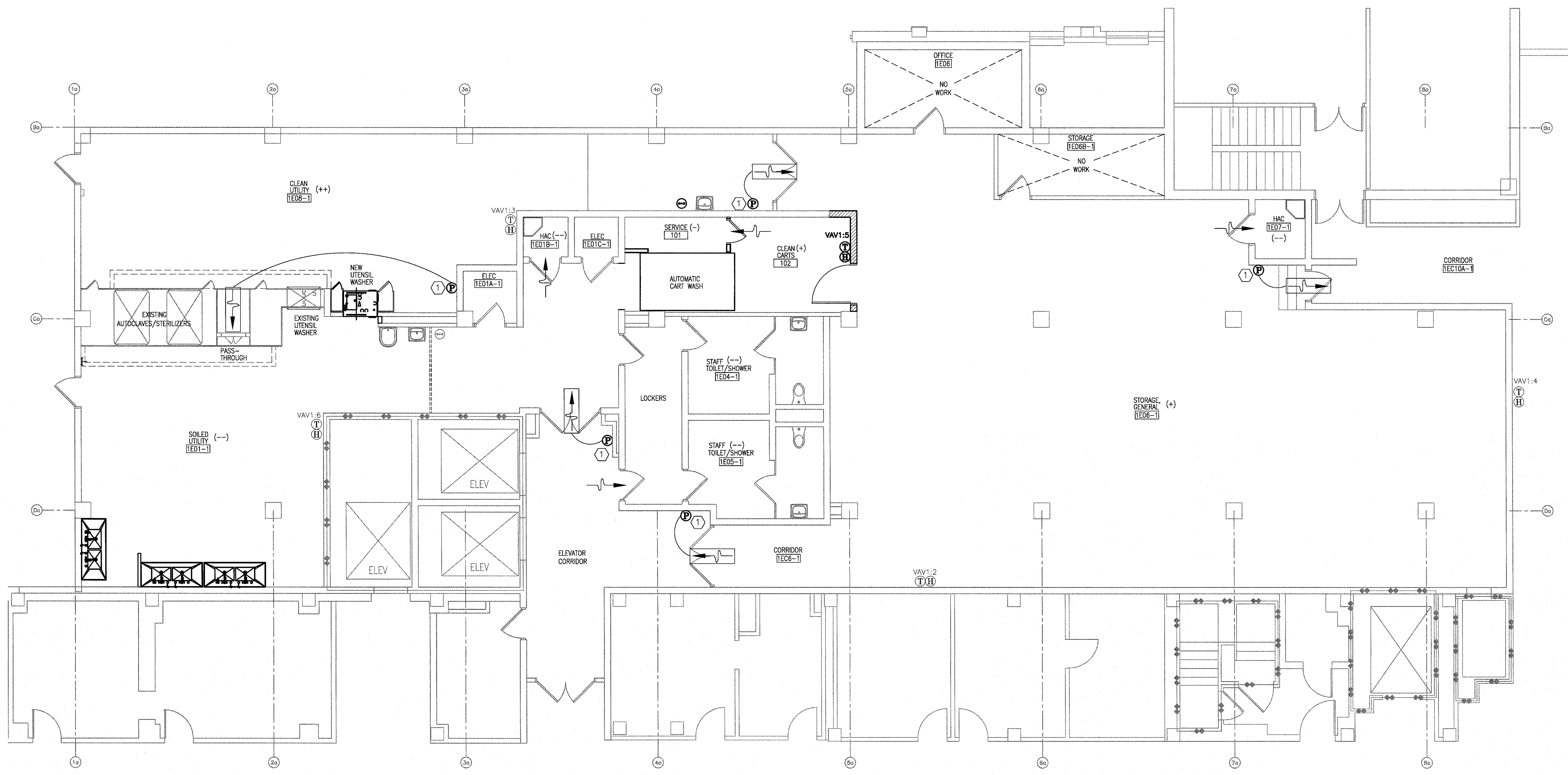
- KEY NOTES**
- 1. ROUTE NEW 34/20 SUPPLY DUCT THROUGH THE MECHANICAL ROOM WALL AND CONTINUE TO NEW ROOF CURB AS SHOWN. CONNECT TO THE EXISTING 48/16 SUPPLY DUCT BELOW THE ROOF. SEE DRAWING MH101 FOR CONTINUATION. SEE DETAILS THIS SHEET.
 - 2. SEE DRAWING MH101 FOR CONTINUATION.
 - 3. CONNECT TO EXISTING 34/20 SUPPLY DUCT AS SHOWN.
 - 4. 12/12 STAINLESS STEEL DUCT TO HAVE FLAT-ON-BOTTOM TRANSITION TO LOUVER SLEEVE. SLOPE DUCT BACK TO MECHANICAL ROOM FLOOR PENETRATION AND TO DRAIN PIPE.
 - 5. NEW 12/12 WELDED, STAINLESS STEEL EXHAUST DUCT FROM CART WASHER BELOW. DUCT TO PASS THROUGH OPENING IN THE MECHANICAL ROOM FLOOR BEING VACATED. INSTALL A NEW 2 HOUR RATED FIRE DAMPER AT FLOOR PENETRATION WITH AN ACCESS PANEL. SEE DRAWING MH101 FOR CONTINUATION.
 - 6. NEW 16"/16" LOUVER WITH FIXED, DRAINABLE BLADES. BOTTOM OF LOUVER TO BE 24" ABOVE THE ROOF LINE. WALL OPENING BY THE GENERAL CONTRACTOR. COORDINATE WORK. SEE ARCHITECTURAL DRAWINGS.
 - 7. PREFABRICATED AND INSULATED ROOF CURB TO BE SUPPLIED BY THE MECHANICAL CONTRACTOR AND INSTALLED BY THE GENERAL CONTRACTOR. ROOF CUT BY GENERAL CONTRACTOR. REFER TO THE ARCHITECTURAL ROOF PLAN. FIELD DETERMINE/MEASURE/VERIFY THE EXACT SIZE AND LOCATION OF THE ROOF CURB. COORDINATE WORK.
 - 8. NEW 46/16 SUPPLY DUCT FROM EXISTING VAV1:3 TO CONNECT INTO THE TOP OF THE EXISTING 46/16 SUPPLY DUCT BELOW THE ROOF. FIELD DETERMINE/MEASURE/VERIFY THE EXACT POINT OF CONNECTION. INSTALL A 2 HOUR RATED FIRE DAMPER AT ROOF PENETRATION WITH AN ACCESS PANEL.
 - 9. INSTALL NEW TURNING VANES IN THE EXISTING 46/16 SUPPLY DUCT AS SHOWN TO FACILITATE THE NEW VAV1:3 SUPPLY ROUTING. FIELD DETERMINE/MEASURE/VERIFY.
 - 10. INSTALL A CAP/BLANK-OFF PANEL IN THE EXISTING SUPPLY DUCT TO DIRECT THE AIRFLOW AS SHOWN - IN EFFECT CREATING AN ELBOW WITH TURNING VANES.
 - 11. DISCONNECT/DEMO THE EXISTING SUPPLY DUCT AS NECESSARY TO ENABLE THE INSTALLATION OF THE NEW SUPPLY DUCTWORK.
 - 12. TO MINIMIZE CEILING DISTURBANCE, ABANDON IN PLACE THE EXISTING 46/16 SUPPLY ELBOW IN THE CEILING.
 - 13. NEW SUPPLY DUCT THROUGH ROOF. DUCT TO CONNECT TO EXISTING SUPPLY DUCT BELOW ROOF SERVING VAV1:3. FIELD DETERMINE/MEASURE/VERIFY EXACT LOCATION.
 - 14. SEAL ALL EXTERIOR DUCTWORK AND WALL OPENING WATER-TIGHT. ALSO INSTALL INSULATION ON ALL EXTERIOR DUCTWORK.
 - 15. ELECTRICAL CONTRACTOR SHALL RE-ROUTE EXISTING ELECTRICAL CONDUIT TO FACILITATE THE INSTALLATION OF THE NEW DUCTWORK. COORDINATE WORK.
 - 16. NEW 24"x24" ACCESS PANEL PROVIDED AND INSTALLED BY THE GC. NEW PANEL SHALL BE LOCATED TO ALLOW ACCESS TO THE NEW FIRE DAMPER. COORDINATE LOCATION AND WORK.



KEY PLAN - FIRST FLOOR
NTS

CONSULTANTS:			ARCHITECT/ENGINEERS:		Drawing Title MECHANICAL HVAC PLAN AND ELEVATIONS - NEW WORK - MECHANICAL ROOM		Project Title RENOVATE STERILE PROCESSING SERVICES		Project Number 623-14-103		Office of Construction and Facilities Management 				
			 200 Envoy Circle #201, Louisville KY 40299 - PH: 502.339.8511 - www.paradigmusa.com		Approved Project Director		Control Number VA256-14-C-0112		Location JACK C. MONTGOMERY VAMC 101 HONOR HEIGHTS DRIVE, MADISON, KY			Building Number 1			
Revisions						PO Number C40110		Date 3/10/2015		Checked KLP		Drawn JDF		Drawing Number MH103	

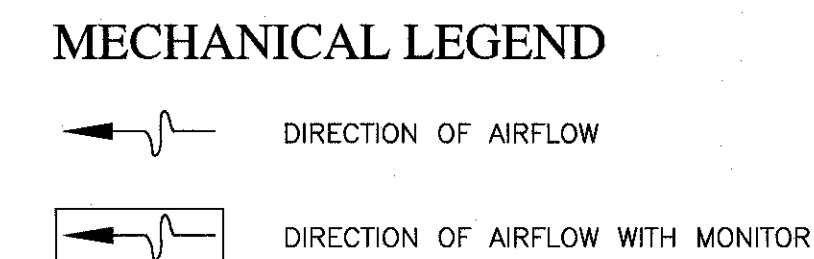
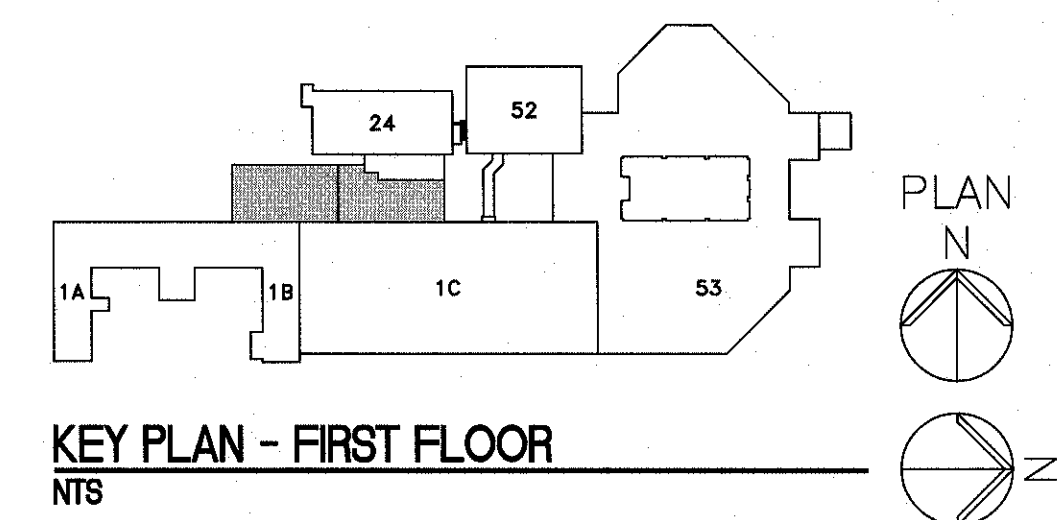
three eighths inch = one foot
one quarter inch = one foot
one eighth inch = one foot
three eighths inch = one foot
one half inch = one foot
three quarters inch = one foot
one inch = one foot
one and one half inches = one foot
two inches = one foot
three inches = one foot



1 1ST FLOOR PLAN
3/16" = 1'-0"

- NOTES**
- A. REFER TO DRAWING M-001 FOR LEGEND, ABBREVIATIONS, AND GENERAL NOTES RELATED TO THIS SHEET.
 - B. COORDINATE ALL WORK WITH DRAWINGS FROM OTHER TRADES PRIOR TO DEMOLITION. NOTIFY THE G.C./COR WITH ANY CONFLICTS.
 - C. ALL EXISTING PIPING, DUCTWORK, SPRINKLERS, CONDUIT, LIGHTING OR OTHER CONSTRUCTION SHALL BE RELOCATED AS NECESSARY FOR ALL DEMOLITION AND INSTALLATION WORK.
 - D. COORDINATE ALL WORK WITH THE VA FOR ACCESS TO MAINTAIN MECHANICAL SERVICES TO CRITICAL AREAS. EXPECT MOST OF THE WORK TO OCCUR AFTER NORMAL WORKING HOURS, OR OVER WEEKENDS AND HOLIDAYS, AND SERVICES RESTORED BY THE NEXT WORK DAY.

- KEY NOTES**
- 1. NEW ROOM PRESSURE SENSOR. SENSOR TO PROVIDE 24/7 MONITORING OF THE PRESSURE DIFFERENTIAL BETWEEN ROOMS/SPACES AS INDICATED. PHOENIX CONTROLS - ADVANCE PRESSURE MONITOR II, OR EQUAL. SEE INFECTION CONTROL DRAWING G105 FOR ADDITIONAL INFORMATION. COORDINATE INTEGRATION OF PRESSURE MONITOR OUTPUTS, RELOCATION OF CONTROLS, TEST AND BALANCE CONTROL WORK, AND ALL OTHER CONTROLS WORK WITH AUTOMATED BUILDING SYSTEMS OF TULSA.



FULLY SPRINKLED
BID DOCUMENTS
FOR CONSTRUCTION

		CONSULTANTS:		ARCHITECT/ENGINEERS:	 200 Envoy Circle #201, Louisville KY 40299 - PH: 502.339.8511 - www.paradigmusa.com	Drawing Title		Project Title		Project Number		Office of Construction and Facilities Management
						MECHANICAL AIRFLOW DIAGRAM - FIRST FLOOR		RENOVATE STERILE PROCESSING SERVICES		623-14-103		
						Approved Project Director		Location		Building Number		
						Control Number		JACK C. MONTGOMERY VAMC		1		
						VA256-14-C-0112		101 HONOR HEIGHTS DRIVE, MUSKOGEE, OK				
						Date		Checked		Drawing		MH104
						3/10/2015		KLP		JDF		
						PO Number						
						C40110						
Revisions:		Date										



three inches = one foot
one and one half inches = one foot
one inch = one foot
three quarters inch = one foot
one half inch = one foot
three eighths inch = one foot
one eighth inch = one foot
one quarter inch = one foot
one eighth inch = one foot

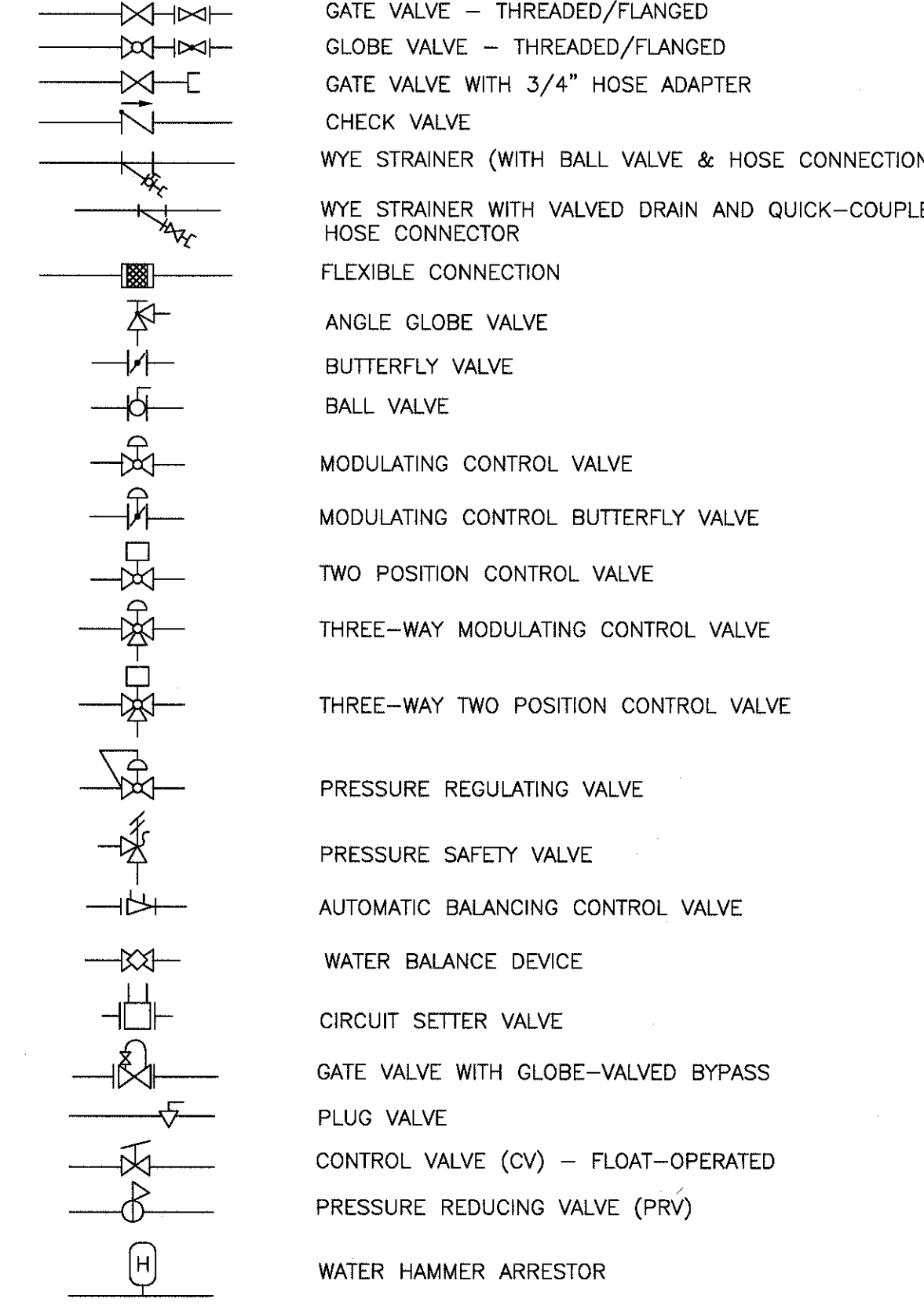
ABBREVIATIONS

(NOT ALL SYMBOLS WILL APPLY TO THIS WORK)

A/E	ARCHITECT / ENGINEER	PA	PASCAL
AD	AREA DRAIN	PD	PRESSURE DROP OR DIFFERENCE
AFF	ABOVE FINISH FLOOR	PLD	PLUMBING AND DRAINAGE
AFG	ABOVE FINISH GRADE	PG	PRESSURE GAGE
AG	AIR GAP	PHWR	PROCESS HOT WATER RETURN
AP	ACCESS PANEL	PHWS	PROCESS HOT WATER SUPPLY
AS	AUTOMATIC SPRINKLER	PP	PLUMBING PUMP
ASD	ADJUSTABLE SPEED DRIVES	PPM	PARTS PER MILLION
ASD	AUTOMATIC SPRINKLER DRAIN	PRS	PRESSURE REDUCING STATION
ASHRAE	AMERICAN SOCIETY HEATING, REFRIGERATION, AIR CONDITIONING ENGINEERS	PRV	PRESSURE REDUCING VALVE
		PSI	POUNDS PER SQUARE INCH
		PSIA	POUNDS PER SQUARE INCH ATMOSPHERE
ASME	AMERICAN SOCIETY MECHANICAL ENGINEERS	PSIG	POUNDS PER SQUARE INCH GAUGE
ASPE	AMERICAN SOCIETY PLUMBING ENGINEERS	PTRV	PRESSURE TEMPERATURE RELIEF VALVE
ASR	AUTOMATIC SPRINKLER RISER	PW	POTABLE WATER
AV	ACID VENT	RD	ROOF DRAIN
AW	ACID WASTE	RDL	ROOF DRAIN LEADER
BFP	REDUCED PRESSURE BACKFLOW PREVENTER	RL	ROOF LEADER
BHP	BREAK HORSEPOWER	RO	REVERSE OSMOSIS WATER
BSP	BLACK STEEL PIPE	RWL	RAIN WATER LEADER
BT	BATHTUB	SAN	SANITARY SEWER
BTU	BRITISH THERMAL UNIT	SMACNA	SHEET METAL AND AIR CONDITIONING CONTRACTORS NATIONAL ASSOCIATION
BTUH	BRITISH THERMAL UNIT PER HOUR	SCFM	STANDARD CUBIC FOOT/MINUTE
		SCW	SOFTENED COLD WATER
C	CELSIUS	SDMH	STORM DRAIN MANHOLE
CGA	COMPRESSED GAS ASSOCIATION	SP	SUMP PUMP
CI	CAST IRON	SPR	SPRINKLER LINE
CO	CLEANOUT	SQFT	SQUARE FEET
CS	CLINICAL SINK	ST	STAINLESS STEEL
CV	CONTROL VALVE	ST	STORAGE TANK
		SW	STORM WATER
(D)	EXISTING ITEM TO BE DEMOLISHED	TCV	TEMPERATURE CONTROL VALVE
DW	DOMESTIC COLD WATER	TD	TEMPERATURE DIFFERENCE
DHW	DOMESTIC HOT WATER	TDH	TOTAL DYNAMIC HEAD
DHWR	DOMESTIC HOT WATER RETURN	TEMP	TEMPERATURE
DHWS	DOMESTIC HOT WATER SUPPLY	TP	TRAP PRIMER
DI	DOWN	TSTAT	THERMOSTAT
DOE	DEPARTMENT OF ENERGY	TWR	TEMPERED WATER RETURN
DW	DISHWASHER	TWS	TEMPERED WATER SUPPLY
DWG	DRAINING	TYP	TYPICAL
DWH	DOMESTIC WATER HEATER	UPC	UNIFORM PLUMBING CODE
DWR	DRINKING WATER RETURN	V	VENT
DWS	DRINKING WATER SUPPLY	VAC	VACUUM
DWV	DRAIN WASTE VENT	VB	VACUUM BREAKER
(E)	EXISTING ITEM TO REMAIN	VCO	VACUUM CLEANER OUTLET
EL	ELEVATION	VP	VACUUM PUMP
EMCS	ENERGY MONITORING AND CONTROL SYSTEM	VS	VENT STACK
EPA	ENVIRONMENTAL PROTECTION AGENCY	VTR	VENT THROUGH ROOF
EPACT	ENERGY POLICY ACT	W	WASTE
ESC	ESCUTCHEON	WC	WALL CLOSET
ESH	EMERGENCY SHOWER	WCO	WALL CLEANOUT
ET	EXPANSION TANK	WG	WATER GAGE
EW	ELECTRIC WATER COOLER	WH	WATER HEATER
EW	ELECTRIC WATER COOLER	WHA	WATER HAMMER ARRESTER
EW	ELECTRIC WATER HEATER	WL	WATER LINE
EX	EXISTING	WM	WATER METER
		WPD	WATER PRESSURE DROP
F	FAHRENHEIT	WS	WASTE STACK
FCO	FLOOR CLEANOUT	YCO	YARD CLEANOUT
FD	FLOOR DRAIN	YH	YARD HYDRANT
FDC	FIRE DEPARTMENT (HOSE) CONNECTION		
FM	FLOW METER		
FOP	FUEL OIL PUMP		
FOR	FUEL OIL RETURN		
FOS	FUEL OIL SUPPLY		
FOV	FUEL OIL VENT		
FS	FLOOR SINK		
FS	FLOW SWITCH		
FU	FIXTURE UNITS		
GAL	GALLON		
GCO	GRADE CLEANOUTS		
GPD	GALLONS PER DAY		
GPH	GALLONS PER HOUR		
GPM	GALLONS PER MINUTE		
GPR	GAS PRESSURE REGULATOR		
GRS	GAS REGULATOR STATION		
GT	GREASE TRAP		
GVTR	GAS VENT THROUGH ROOF		
GW	GAS FIRED WATER HEATER		
H&CW	HOT AND COLD WATER		
HB	HUB		
HD	HUB DRAIN		
HEX	HEAT EXCHANGER		
HP	HORSEPOWER		
HS	HAND SINK		
HST	HOT WATER STORAGE TANK (DOMESTIC)		
HWB	HOT WATER BOILER		
HWCP	HOT WATER CIRCULATING PUMP		
HWP	HOT WATER PUMP		
HYD	HYDRANT		
IA	INSTRUMENT AIR		
ICW	INDUSTRIAL COLD WATER		
INV	INVERT		
IPC	INTERNATIONAL PLUMBING CODE		
IRW	IRRIGATION WATER		
IW	INDIRECT WASTE		
IWH	INSTANTANEOUS WATER HEATER		
IWR	INDUSTRIAL WATER RETURN		
IWS	INDUSTRIAL WATER SUPPLY		
KW	KILOWATT		
KWHR	KILOWATT-HOUR		
L/S	LITER PER SECOND		
LA	LABORATORY AIR		
LAV	LAVATORY		
LBS/HR	POUNDS PER HOUR		
LOW	LABORATORY COLD WATER		
LHW	LABORATORY HOT WATER		
LNG	LIQUID NATURAL GAS		
LOX	LIQUID OXYGEN		
LV	LABORATORY VACUUM		
LW	LOW WATER		
M	METER		
MA	MEDICAL AIR		
MAV	MEDICAL AIR VENT		
MBH	1000 BTUH		
MED	MEDICAL		
MER	MECHANICAL EQUIPMENT ROOM		
MH	MANHOLE		
MOU	MEMORANDUM OF UNDERSTANDING		
MSB	MOP SERVICE BASIN		
MV	MEDICAL VACUUM		
N2	NITROGEN		
N2O	NITROUS OXIDE		
NC	NORMALLY CLOSED		
NG	NATURAL GAS		
NIC	NOT IN CONTRACT		
NO	NORMALLY OPEN		
NOMIA	NOMINAL		
NPW	NON POTABLE WATER		
NTC	NOT TO SCALE		
O2	OXYGEN		
OC	ON CENTER		
OD	OUTSIDE DIAMETER		
OFD	OVERFLOW DRAIN		
OR	OPERATING ROOM		
OVFL	OVERFLOW		

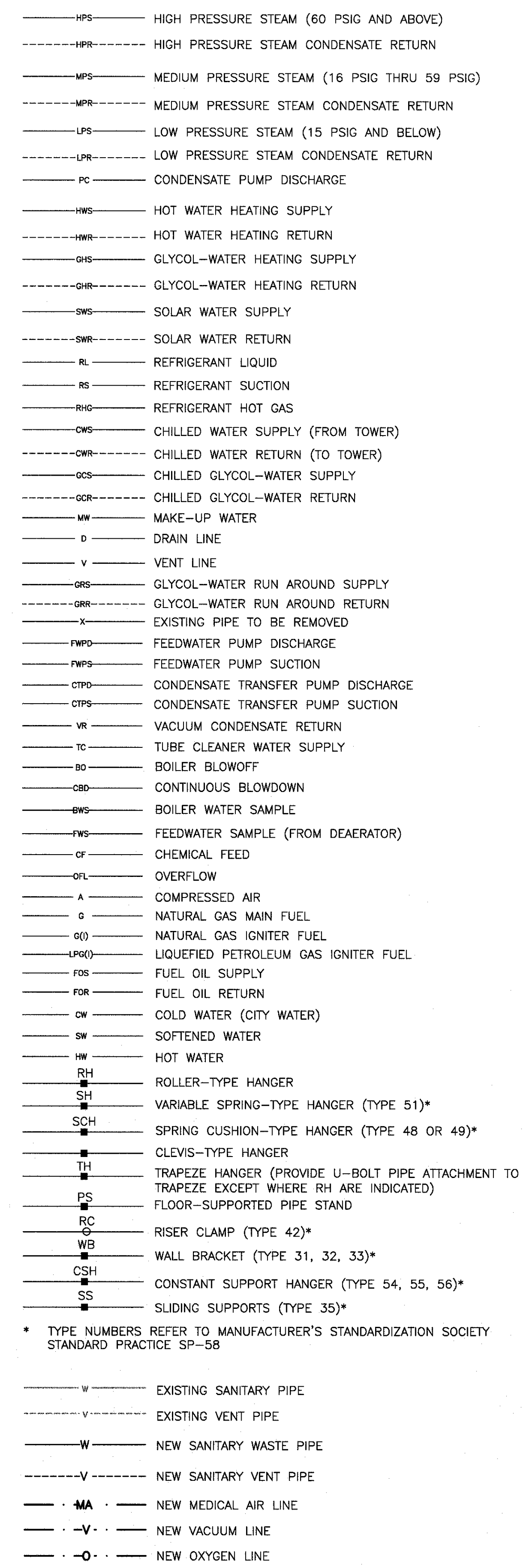
VALVE SYMBOLS

(NOT ALL SYMBOLS WILL APPLY TO THIS WORK)



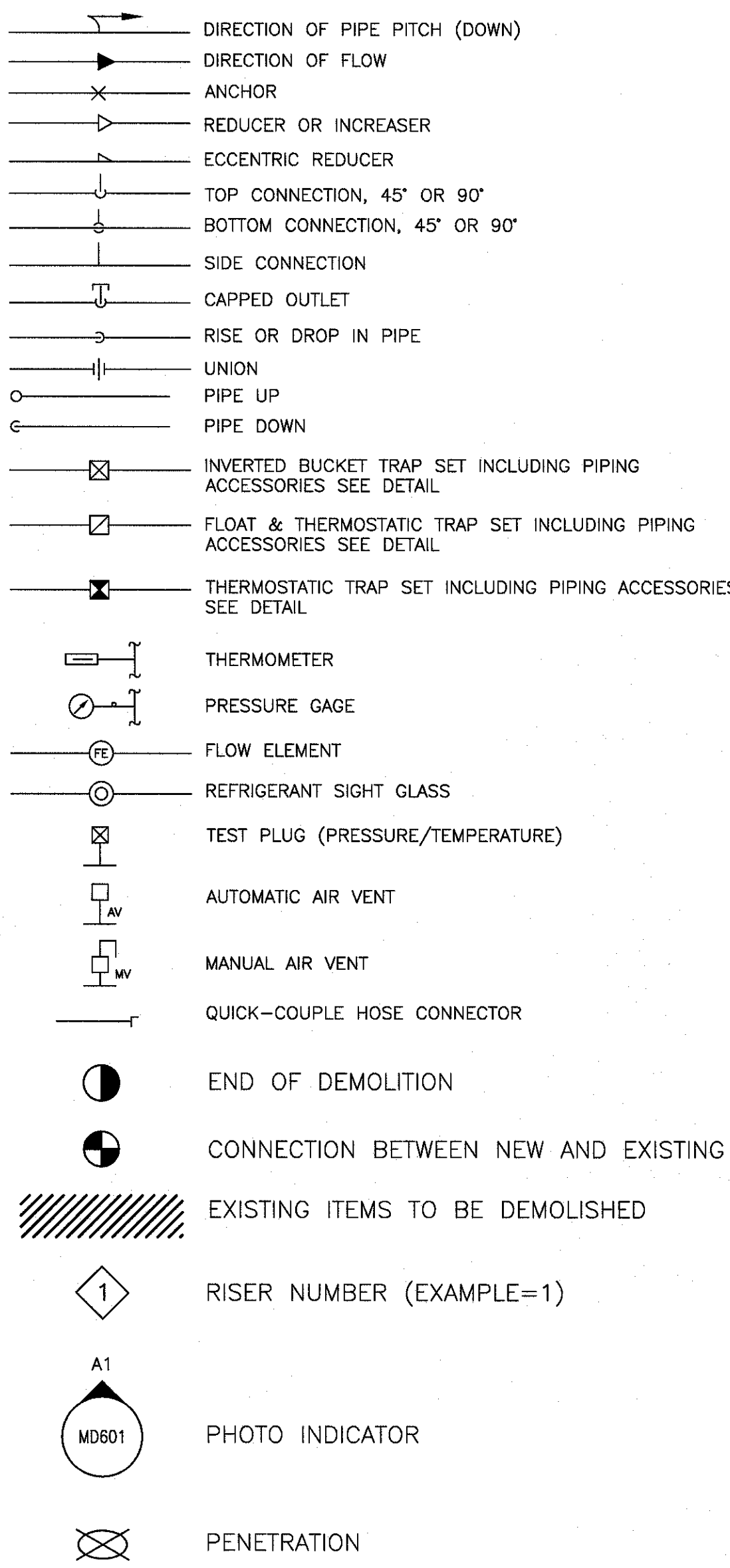
PIPING SYMBOLS

(NOT ALL SYMBOLS WILL APPLY TO THIS WORK)



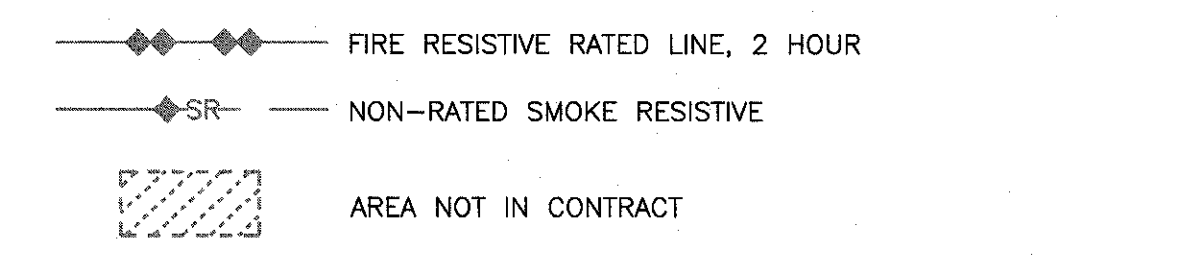
GENERAL PIPING SYMBOLS

(NOT ALL SYMBOLS WILL APPLY TO THIS WORK)



ARCHITECTURAL LEGEND

(REFER ARCHITECTURAL DRAWINGS FOR LOCATIONS AND DETAILS)



PLUMBING GENERAL NOTES

- THE CONTRACTOR SHALL LOCATE ALL NEW CONCRETE PENETRATIONS SUCH THAT THE PENETRATION DOES NOT OCCUR IN A CONCRETE BEAM OR PAN RIB.
- THE PLUMBING CONTRACTOR SHALL REFERENCE DRAWINGS G102 TO G110 FOR PHASING REQUIREMENTS OF PROJECT. PHASING SHALL BE INCLUDED IN BASE BID.
- DRAWINGS:**
 - PLUMBING DRAWINGS ARE TO BE CONSIDERED DIAGRAMATIC AND INDICATE GENERAL ARRANGEMENT OF WORK AND SYSTEMS. IT IS NOT POSSIBLE TO INDICATE EVERY FITTING, VALVE, OFFSET, TRAP, ACCESS PANEL, ETC. THAT IS REQUIRED FOR A PROPER WORKING SYSTEM AND MAINTENANCE THEREOF. NO ADDITIONAL COST WILL BE ALLOWED FOR SUCH ITEMS.
 - FOR EXISTING SYSTEMS, ALL LINES AND CONDITIONS SHOWN ON THE DRAWING HAVE BEEN SHOWN IN GOOD FAITH. HOWEVER, THERE IS NO IMPLIED GUARANTEE AS TO THEIR SIZE, LOCATION, ELEVATION, COMPLIANCE WITH CURRENT CODES OR CONDITIONS. THE CONTRACTOR SHALL INVESTIGATE ALL EXISTING CONDITIONS AND SHALL MODIFY THE PROPOSED WORK AS REQUIRED OR DIRECTED.
- REFER TO ARCHITECTURAL DRAWINGS FOR EXACT EQUIPMENT LOCATIONS, ETC. AND OTHER SPACE CONDITIONS. CHECK DRAWINGS OF OTHER TRADES TO COORDINATE PLUMBING WORK.**
- FEES/INSPECTIONS:**
 - PAY ALL FEES AND ARRANGE FOR ALL INSPECTIONS. SUCH INSPECTIONS ARE TO BE CONDUCTED BY AUTHORITIES HAVING JURISDICTION. ADVISE THE COR/C/C OF ANY MODIFICATION TO OR DEVIATION FROM THE CONTRACT DOCUMENTS IN ORDER TO COMPLY WITH CODES. ENTERING INTO A CONTRACT WILL BE DEEMED AS EVIDENCE OF COMPLIANCE WITH THE REQUIREMENTS OF AUTHORITIES HAVING JURISDICTION OVER THE WORK.
- QUALITY ASSURANCE:**
 - ALL PLUMBING WORK SHALL COMPLY WITH ALL APPLICABLE FEDERAL STATE, AND LOCAL CODES AS WELL AS ALL UTILITY COMPANY REGULATIONS. THESE CODES SHALL SUPERCEDE ANY INFORMATION CONTAINED WITHIN THE DRAWING SET.
 - EACH PIECE OF EQUIPMENT SHALL HAVE MANUFACTURER'S NAME, ADDRESS, SERIAL, AND MODEL NUMBERS ON A PLATE SECURELY ATTACHED TO IT.
 - ALL PIPING ABOVE GRADE SHALL HAVE AN EXPOSED TAG TO IDENTIFY THE PIPE, AND A DIRECTION OF FLOW INDICATOR.
 - EACH PIECE OF EQUIPMENT SHALL BE INSTALLED IN ACCORDANCE WITH THE MANUFACTURER'S RECOMMENDATIONS.
 - ALL PLUMBING WORK SHALL BE PERFORMED BY INDIVIDUALS SKILLED IN THIS TRADE AND COMPLETED IN A PROFESSIONAL MANNER.
 - EACH PIECE OF EQUIPMENT SHALL BE INSTALLED AS FREE FROM NOISE AND VIBRATION AS POSSIBLE.
- EQUIPMENT DELIVERY AND STORAGE:**
 - DELIVER EQUIPMENT TO THE SITE IN MANUFACTURER'S ORIGINAL PACKAGING. CLEARLY MARK EACH ITEM WITH THE PROPER IDENTIFICATION NUMBER. STORE IN SAFE DRY AREA.
- SITE INSPECTION (REQUIRED):**
 - CONTRACTOR SHALL ATTEND PRE-BID WALK THROUGH AT THE SITE, ARRANGED BY THE COR, TO INSPECT EXISTING FACILITIES AND PLUMBING SYSTEMS. CONTRACTOR SHALL EVALUATE THE FULL SCOPE OF WORK AND WORKING CONDITIONS. CONTRACTOR IS RESPONSIBLE FOR THE INCLUSION OF ALL REQUIRED DEMOLITION IN AREAS UNDERGOING MODIFICATION WHETHER OR NOT SUCH WORK IS INDICATED ON THE DRAWINGS. DEMOLITION SHALL GENERALLY BE ARRANGED TO AGREE WITH THE ACCOMPLISHMENT OF WORK UNDER THE VARIOUS PHASES, AND IN COORDINATION WITH OTHER TRADES. CONSULT WITH THE COR AND ARCHITECTURAL DRAWINGS FOR OTHER REQUIREMENTS.
- EXECUTION:**
 - LAYOUT
 - PRIOR TO INSTALLATION, LAYOUT ALL PLUMBING WORK IN A MANNER THAT WILL ALLOW FOR THE INSTALLATION OF ALL OTHER WORK INDICATED.
 - COORDINATE AND COMMUNICATE INSTALLATION OF PLUMBING WORK WITH THAT OF OTHER TRADES, SO THAT ALL WORK MAY BE INSTALLED IN THE AVAILABLE SPACE, COORDINATE WITH THE ELECTRICAL CONTRACTOR FOR POWER REQUIREMENTS.
 - EQUIPMENT/MATERIAL
 - INSTALL ALL MATERIAL AND EQUIPMENT IN A NEAT WORKMAN LIKE MANNER IN STRICT ACCORDANCE WITH THE MANUFACTURER'S RECOMMENDATIONS AND PROVIDE FOR THE FOLLOWING:
 - CONNECTION OF PIPING AND ACCESSORIES TO EQUIPMENT SHALL PERMIT EASY REMOVAL WITH MINIMUM DISTURBANCE TO OTHER EQUIPMENT AND MATERIALS.
 - ITEMS REQUIRING INSPECTION, ADJUSTMENT, MAINTENANCE, SERVICING OR REPLACEMENT SHALL BE EASILY ACCESSIBLE.
 - OTHER CONSIDERATIONS:
 - ALL EXISTING PIPING, MATERIALS OR EQUIPMENT NOT REQUIRED FOR THE NEW SYSTEM, WHETHER OR NOT SUCH ITEMS ARE INDICATED ON THE PLANS, SHALL BE REMOVED. THE STATUS OF SUCH ITEMS SHALL BE VERIFIED BY THIS CONTRACTOR BEFORE DISCONNECTING, CAPPING OR REMOVING.
 - ALL EXISTING PIPING, MATERIALS OR EQUIPMENT WHICH WILL REMAIN AS PART OF THE ACTIVE SYSTEM SHALL BE VISUALLY INSPECTED. ANY SUCH ITEMS FOUND TO BE DEFECTIVE SHALL BE REMOVED AND REPLACED WITH NEW MATERIALS OF LIKE SUBSTANCE, SIZE AND TYPE. ALL PLUMBING SYSTEMS THAT HAVE BEEN REPAIRED, MODIFIED OR RELOCATED SHALL BE TESTED IN ACCORDANCE WITH THE APPLICABLE SPECIFICATION.
 - CONTRACTOR SHALL BE RESPONSIBLE FOR REPAIRING (PATCHING, SEALING, FIRE-STOPPING) ALL ABANDONED WALL PENETRATIONS AND ANY NEW PENETRATIONS CREATED FOR PLUMBING PIPE.
 - CONTRACTOR SHALL BE RESPONSIBLE FOR REPAIRING OR REPLACING, ANY NEW OR EXISTING CONSTRUCTION THAT IS DAMAGED, DISTURBED, OR REMOVED INCIDENTAL TO THIS WORK. THE WORK SHALL BE COMPLETED AT NO EXPENSE TO, AND TO THE SATISFACTION OF, THE OWNER.
 - MAINTAIN COMPLETE ACCESS TO ALL ASSOCIATED HVAC, ELECTRICAL AND PLUMBING CONTROLS, VALVES, SWITCHES, DISCONNECTS, ACCESS DOORS AND ACCESS PANELS. COMPLETE CONSTRUCTION SHALL ALLOW ACCESS TO THESE COMPONENTS FOR USE, MAINTENANCE, REPAIR AND REPLACEMENT.
 - DOCUMENTATION: CONTRACTOR SHALL PROVIDE A MINIMUM OF THREE (3) HARD COPIES OF TECHNICAL MANUALS, AS-BUILT DRAWINGS, AND MANUFACTURER'S OPERATION AND MAINTENANCE MANUALS. ALSO PROVIDE SAME INFORMATION ON COMPACT DISK.

CONSULTANTS:		ARCHITECT/ENGINEERS:		Drawing Title PLUMBING ABBREVIATIONS, SYMBOLS, AND GENERAL NOTES		Project Title RENOVATE STERILE PROCESSING SERVICES		Project Number 623-14-103		Office of Construction and Facilities Management Department of Veterans Affairs	
				Approved Project Director		Location JACK C. MONTGOMERY VAMC 101 HONOR HEIGHTS DRIVE, MARKOEE, OK		Building Number 1			
				Control Number VA256-14-C-0112		Date 3/10/2015		Drawing Number P-001			
				FO Number C40110		Checked KLP		Drawn JDF			
Revisions:		Date:		200 Envoy Circle #201, Louisville KY 40299 - PH: 502.339.8511 - www.paradigmusa.com							